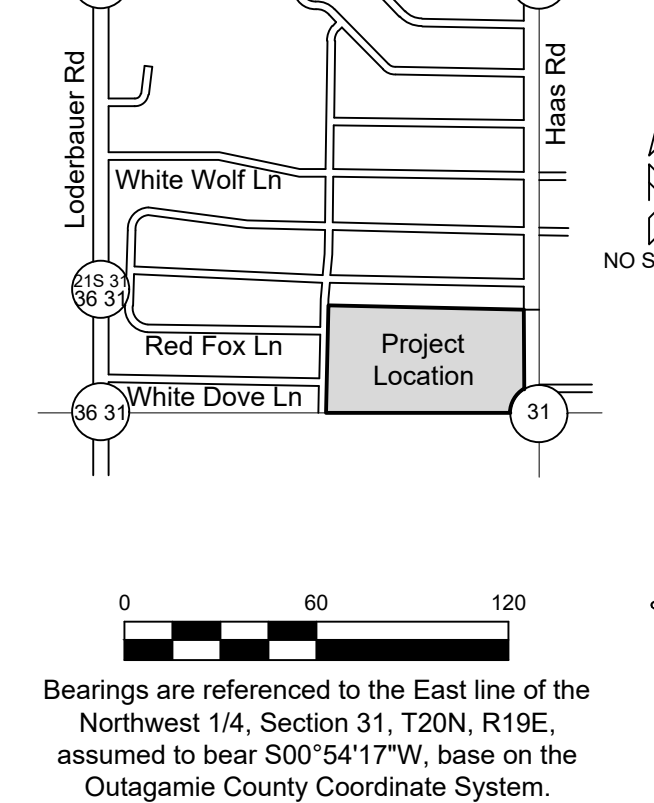
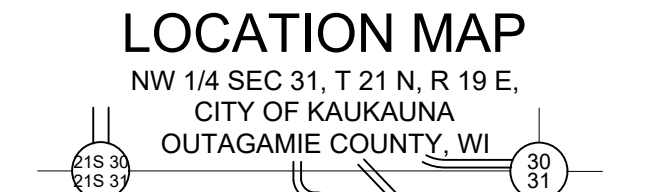
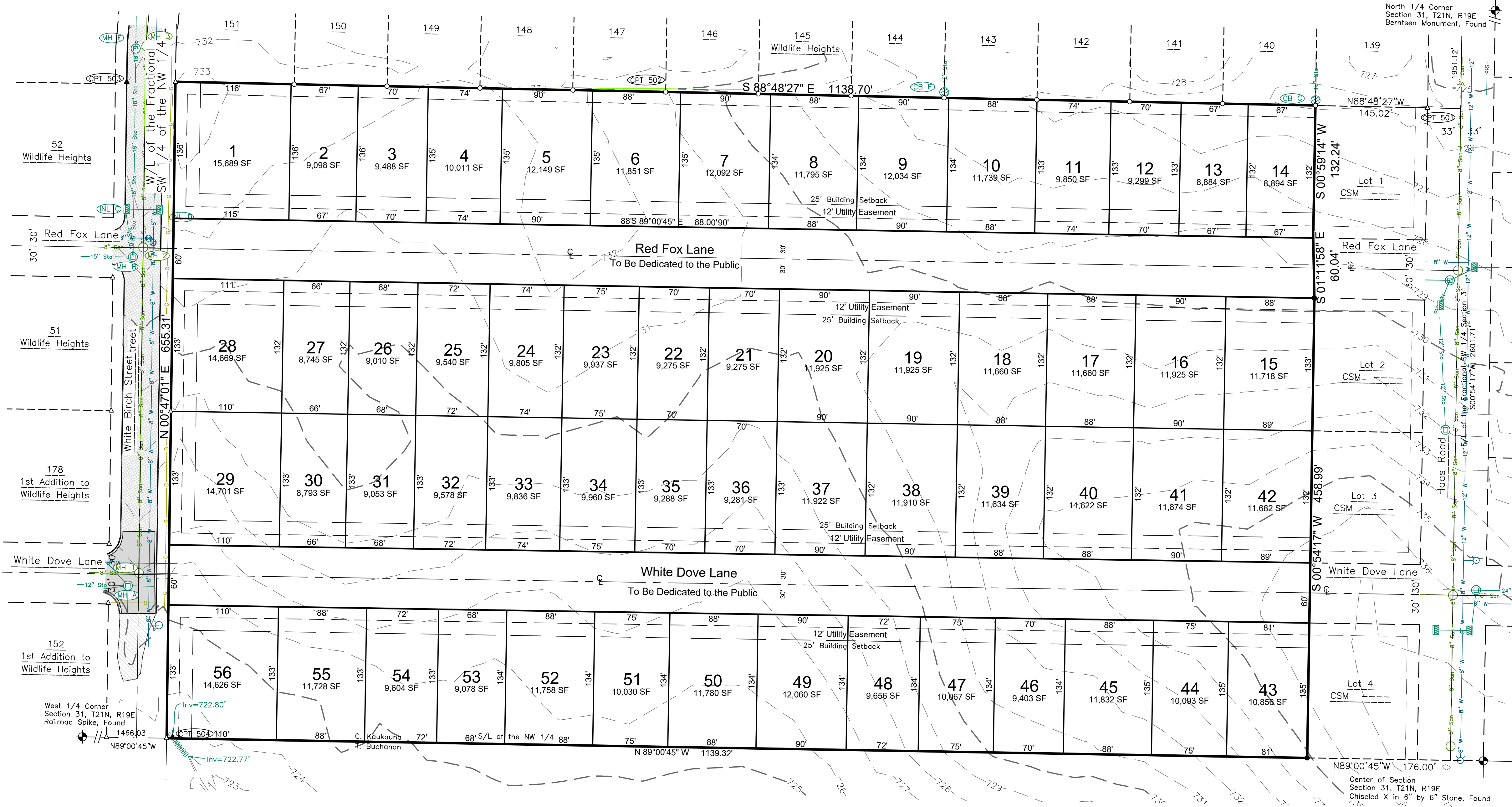


Preliminary Plat of Blue Stem West

All of Lot 1 of Certified Survey Map _____ being located in part of the SE 1/4 of the NW 1/4 of Section 31, Township 21 North, Range 19 East, City of Kaukauna, Outagamie County, Wisconsin.



Sanitary Structures

Structure #	Rim	Inv	Size	Material	Direction
MH 1	725.95	715.06	8"	PVC	N
		715.06	12"	PVC	S
		715.06	8"	PVC	E
		715.06	8"	PVC	W
MH 2	731.48	713.71	8"	PVC	N
		713.71	8"	PVC	S
		713.71	8"	PVC	E
		713.71	8"	PVC	W
MH 3	731.86	712.44	8"	PVC	N
		712.44	8"	PVC	S

Storm Structures

Structure #	Rim	Inv	Size	Material	Direction
MH A	725.81	722.09	18"	HDPE	N
		722.09	15"	HDPE	W
		722.09	10"	PVC	NW
MH B	731.15	726.46	10"	PVC	NW
		722.09	18"	HDPE	W
INL C	731.64	727.15	10"	PVC	SE
		727.80	8"	PVC	E
INL D	731.76	728.21	8"	PVC	W
		721.02	18"	PVC	N
MH E	731.72	721.02	18"	PVC	N
		721.02	18"	HDPE	S
CB F	727.49	723.73	12"	PVC	N
		725.93	15"	PVC	N

LEGEND

	Sanitary Sewer (Pipe Size)		Sanitary MH / Tank / Base		1/2" Rebar Found
	Storm Sewer (Pipe Size)		Storm Manhole		3/4" Rebar Found
	Underground Gas Line		Inlet		Government Corner
	Culvert		Hydrant		Benchmark
	Index Contour - Existing		Utility Valve		Asphalt Pavement
	Intermediate Contour - Existing		Ex Spot Elevation		Concrete Pavement
			Post / Guard Post		Gravel

SUPPLEMENTARY DATA
 Total Area = 744,381 SF 17.0886 acres
 R/W Area = 136,735 SF 3.1390 acres
 Net Area = 607,646 SF 13.9496 acres
 Number of Lots = 56
 Average lot size = 10,500 SF
 Typical lot dimension = 80' x 132'
 Lineal feet of street = 2,339 LF

SURVEYOR'S CERTIFICATE
 I, James R. Sehloff, hereby certify that this Preliminary Plat is a correct representation of all existing land divisions and features, and that I have complied with the preliminary plat requirements for the City of Kaukauna.

James R. Sehloff, P.L.S. No. S-2692 Date

NOTES
 • Utility and Drainage Easements will be shown on Final Plat
 • Lands to be annexed to City of Kaukauna

Horizontal Control
 PN8070 - (City of Kaukauna)
 2024-03-06
 Davel Engineering and Environmental
 Horizontal Control (Outagamie County Coordinate System)

Point Number	Northing	Easting	Description
500	557984.88	870465.37	CPT/HUB
501	558643.80	870366.61	CPT/RB10
502	558659.71	869605.68	CPT/RB6
503	558669.47	869067.51	CPT/MAG
504	558015.75	869113.40	CPT/MAG

Mar 13, 2024 - 02:04 PM J:\Projects\8070\8070Plat.dwg Civil 3D\8070Plat.dwg Printed by: jim
DAVEL ENGINEERING & ENVIRONMENTAL, INC.
 Civil Engineers and Land Surveyors
 1164 Province Terrace, Menasha, WI 54952
 Ph: 920-991-1866 Fax: 920-441-0804
 www.davelpro

PRELIMINARY PLAT

Blue Stem Meadows West
 City of Kaukauna, Outagamie County, WI
 For: Dercks Builders & Masonry, Inc.

Date: 03/13/2024
 Filename: 8070Plat.dwg
 Author: JRS
 Last Saved by: jim
 Page 1 of 1