



milwaukee | madison | green bay | denver | atlanta



PROJECT INFORMATION

THE RESERVE ON ARBOR WAY

D 1400 ARBOR WAY
KAUKAUNA, WI
54130

ISSUANCE AND REVISIONS

DATE	DESCRIPTION
09/27/2024	PLAN COMMISSION SUBMISSION

KEY PLAN

SHEET INFORMATION

PROJECT MANAGER EMB
PROJECT NUMBER 123192-01

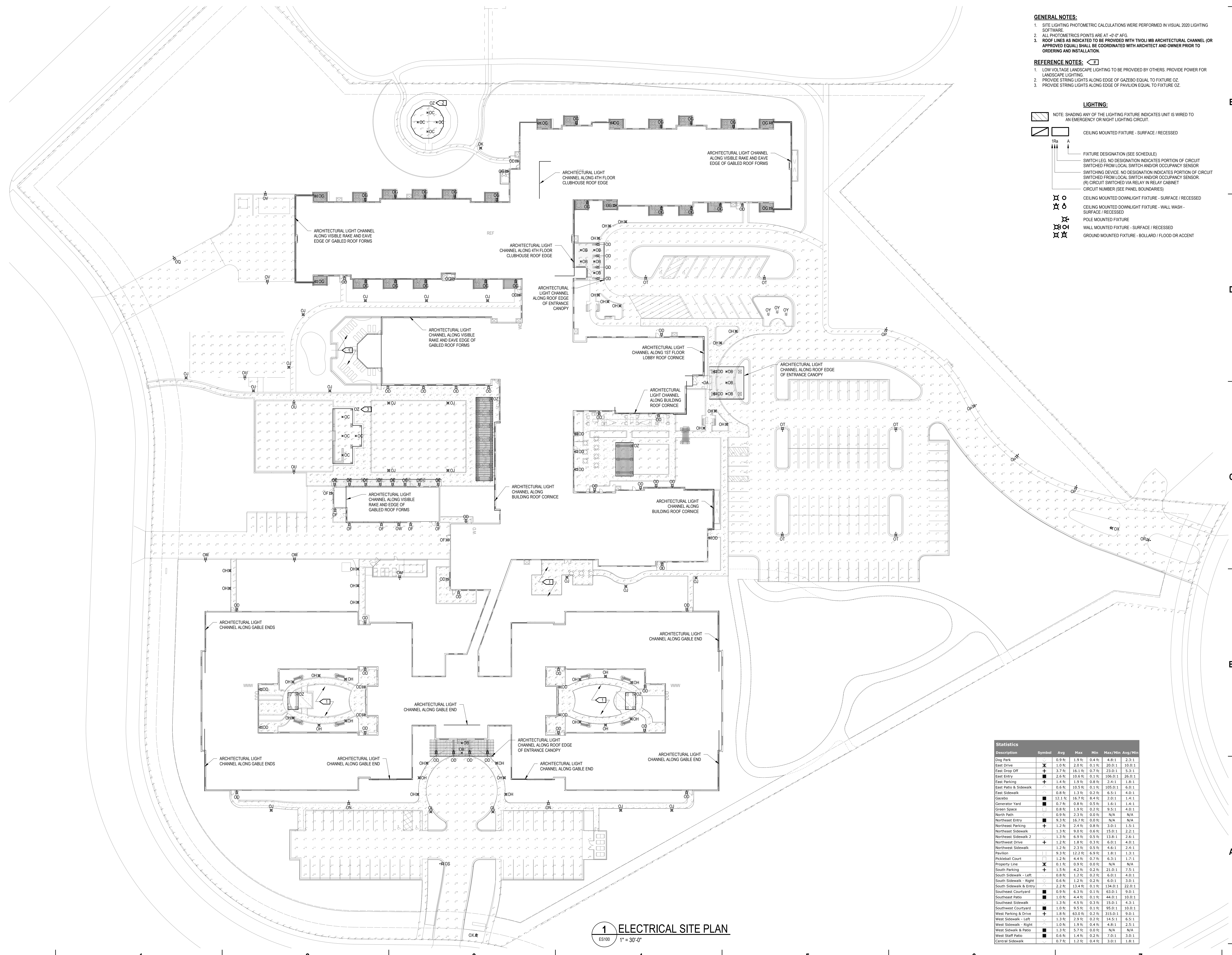
ELECTRICAL SITE PLAN - PLAN COMMISSION

ES100

© 2024 Epstein Uhen Architects, Inc.

- GENERAL NOTES:**
- SITE LIGHTING PHOTOMETRIC CALCULATIONS WERE PERFORMED IN VISUAL 2020 LIGHTING SOFTWARE.
 - ALL PHOTOMETRIC POINTS ARE AT +0'-0" AFG.
 - ROOF LINES AS INDICATED TO BE PROVIDED WITH TIVOLI MB ARCHITECTURAL CHANNEL (OR APPROVED EQUAL) SHALL BE COORDINATED WITH ARCHITECT AND OWNER PRIOR TO ORDERING AND INSTALLATION.
- REFERENCE NOTES:**
- LOW VOLTAGE LANDSCAPE LIGHTING TO BE PROVIDED BY OTHERS. PROVIDE POWER FOR LANDSCAPE LIGHTING.
 - PROVIDE STRING LIGHTS ALONG EDGE OF GAZEBO EQUAL TO FIXTURE OZ.
 - PROVIDE STRING LIGHTS ALONG EDGE OF PAVILION EQUAL TO FIXTURE OZ.

- LIGHTING:**
- NOTE: SHADING ANY OF THE LIGHTING FIXTURE INDICATES UNIT IS WIRED TO AN EMERGENCY OR NIGHT LIGHTING CIRCUIT.
 - CEILING MOUNTED FIXTURE - SURFACE / RECESSED
 - FIXTURE DESIGNATION (SEE SCHEDULE)
SWITCH LEG: NO DESIGNATION INDICATES PORTION OF CIRCUIT SWITCHED FROM LOCAL SWITCH AND/OR OCCUPANCY SENSOR
SWITCHING DEVICE: NO DESIGNATION INDICATES PORTION OF CIRCUIT SWITCHED FROM LOCAL SWITCH AND/OR OCCUPANCY SENSOR
(R) CIRCUIT SWITCHED VIA RELAY IN RELAY CABINET
CIRCUIT NUMBER (SEE PANEL BOUNDARIES)
 - CEILING MOUNTED DOWNLIGHT FIXTURE - SURFACE / RECESSED
 - CEILING MOUNTED DOWNLIGHT FIXTURE - WALL WASH - SURFACE / RECESSED
 - POLE MOUNTED FIXTURE
 - WALL MOUNTED FIXTURE - SURFACE / RECESSED
 - GROUND MOUNTED FIXTURE - BOLLARD / FLOOD OR ACCENT



Description	Symbol	Avg	Max	Min	Max/Min	Avg/Min
Dog Park	○	0.9 f.c.	1.9 f.c.	0.4 f.c.	4.8:1	2.3:1
East Drive	✕	1.0 f.c.	2.0 f.c.	0.1 f.c.	20.0:1	10.0:1
East Drop Off	+	3.7 f.c.	16.1 f.c.	0.7 f.c.	23.0:1	5.3:1
East Entry	■	2.6 f.c.	10.6 f.c.	0.1 f.c.	106.0:1	26.0:1
East Parking	+	1.4 f.c.	1.9 f.c.	0.8 f.c.	2.4:1	1.8:1
East Patio & Sidewalk	△	0.6 f.c.	10.5 f.c.	0.1 f.c.	105.0:1	6.0:1
East Sidewalk	□	0.8 f.c.	1.1 f.c.	0.2 f.c.	6.5:1	4.0:1
Gazebo	■	12.1 f.c.	16.7 f.c.	8.4 f.c.	2.0:1	1.4:1
Generator Yard	■	0.7 f.c.	0.8 f.c.	0.5 f.c.	1.6:1	1.4:1
Green Space	□	0.8 f.c.	1.9 f.c.	0.2 f.c.	9.5:1	4.0:1
North Path	+	0.9 f.c.	2.3 f.c.	0.0 f.c.	N/A	N/A
Northeast Entry	■	9.3 f.c.	16.7 f.c.	0.0 f.c.	N/A	N/A
Northeast Parking	+	1.2 f.c.	2.4 f.c.	0.8 f.c.	3.0:1	1.5:1
Northeast Sidewalk	+	1.3 f.c.	9.0 f.c.	0.5 f.c.	15.0:1	2.2:1
Northeast Sidewalk 2	+	1.3 f.c.	6.9 f.c.	0.5 f.c.	13.8:1	2.6:1
Northwest Drive	+	1.2 f.c.	1.8 f.c.	0.3 f.c.	6.0:1	4.0:1
Northwest Sidewalk	+	1.2 f.c.	2.3 f.c.	0.5 f.c.	4.6:1	2.4:1
Pavilion	+	9.3 f.c.	12.2 f.c.	6.9 f.c.	1.8:1	1.3:1
Pickleball Court	+	1.2 f.c.	4.4 f.c.	0.7 f.c.	6.3:1	1.7:1
Property Line	✕	0.1 f.c.	0.9 f.c.	0.0 f.c.	N/A	N/A
South Parking	+	1.5 f.c.	4.2 f.c.	0.2 f.c.	21.0:1	7.5:1
South Sidewalk - Left	+	0.8 f.c.	1.2 f.c.	0.2 f.c.	6.0:1	4.0:1
South Sidewalk - Right	○	0.6 f.c.	1.2 f.c.	0.2 f.c.	6.0:1	3.0:1
South Sidewalk & Entry	+	2.2 f.c.	13.4 f.c.	0.1 f.c.	134.0:1	22.0:1
Southeast Courtyard	■	0.9 f.c.	6.3 f.c.	0.1 f.c.	63.0:1	9.0:1
Southeast Patio	■	1.0 f.c.	4.4 f.c.	0.1 f.c.	44.0:1	10.0:1
Southeast Sidewalk	+	1.3 f.c.	4.5 f.c.	0.3 f.c.	15.0:1	4.3:1
Southwest Courtyard	■	1.0 f.c.	9.5 f.c.	0.1 f.c.	95.0:1	10.0:1
West Parking & Drive	+	1.8 f.c.	8.9 f.c.	0.2 f.c.	315.0:1	9.0:1
West Sidewalk - Left	+	1.3 f.c.	2.9 f.c.	0.2 f.c.	14.5:1	6.5:1
West Sidewalk - Right	+	1.0 f.c.	1.9 f.c.	0.4 f.c.	4.8:1	2.5:1
West Sidewalk & Patio	+	1.3 f.c.	5.7 f.c.	0.0 f.c.	N/A	N/A
West Staff Patio	■	0.6 f.c.	1.4 f.c.	0.2 f.c.	7.0:1	3.0:1
Central Sidewalk	+	0.7 f.c.	1.2 f.c.	0.4 f.c.	3.0:1	1.8:1

1 ELECTRICAL SITE PLAN
ES100 1" = 30'-0"



milwaukee | madison | green bay | denver | atlanta



PROJECT INFORMATION

THE RESERVE ON ARBOR WAY

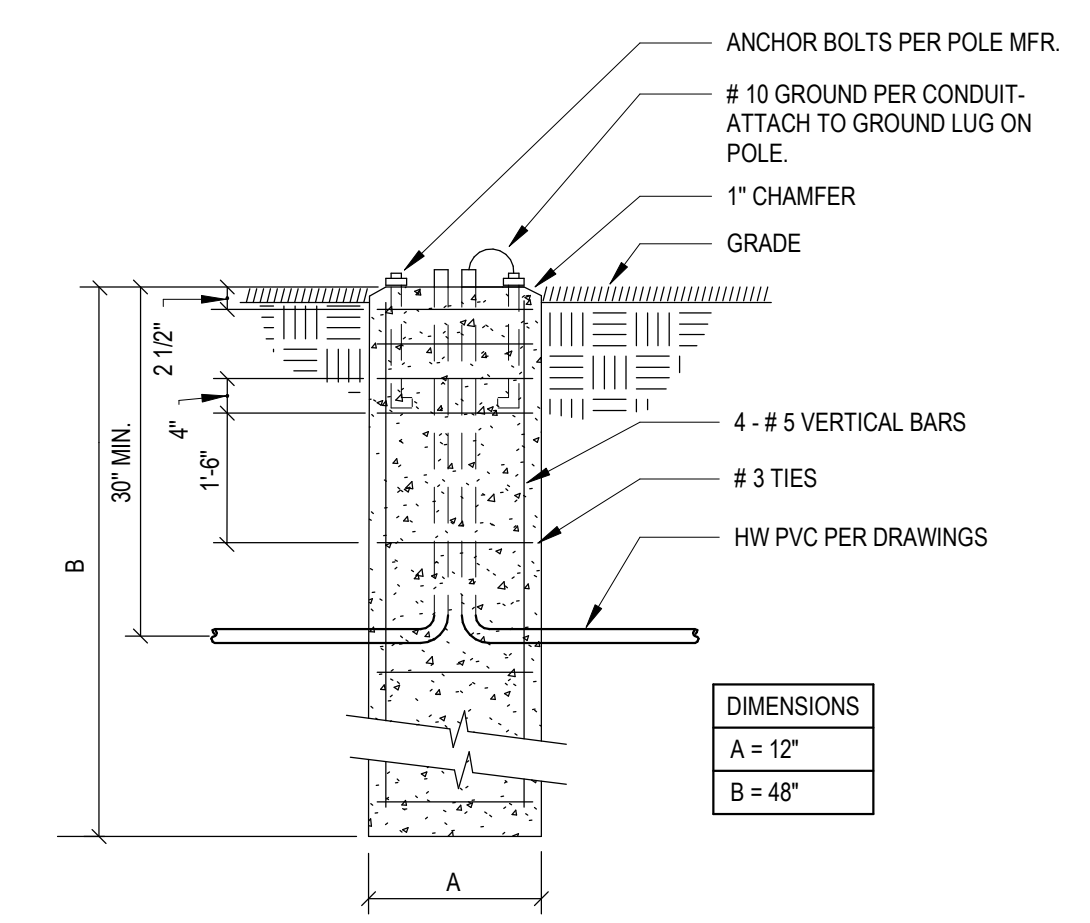
LIGHTING FIXTURE SCHEDULE - PLAN COMMISSION

TYPE	DESCRIPTION	FIXTURE TYPE	LIGHT SOURCE	DRIVER BALLAST			INPUT WATTS	VOLTS	MOUNTING			CEILING TYPE	FIXTURE DEPTH	MANUFACTURER	SPECIFIED FIXTURE MODEL NO.	OPTIONS	FINISH	REMARKS
				K	CRI	TYPE			NO.	TYPE	HEIGHT							
OA	6" DOWNLIGHT	LED	IN UNIT	4000	80+	0-10V	1	19	120	R	--	V	6 1/2"	LITHONIA	LDN6-4015-L06BR-TRBL-MVOLT-GZ1		BK	--
OB	6" CYLINDER	LED	IN UNIT	4000	80+	0-10V	1	15	120	S	--	V	8 1/2"	LUMINIS	SYRROS SY610-L1L15-WVD-40K-MVOLT-LSL-A360-BZT		BZ	--
OC	6" SUSPENDED CYLINDER - DIRECT/INDIRECT	LED	IN UNIT	4000	80+	0-10V	1	64	120	P	TBD	V	18"	LUMINIS	SYRROS PRO SYR606-L1L45-LD5-UL1L22-BAT-40K-MVOLT-ESL-UESL-STM-84N-BZT		BZ	--
OD	DECORATIVE WALL SCONCE	LED	IN UNIT	4000	80+	ST	1	13	120	W	6'-0" TCF AFG	N	26"	VISA	IMAGE OW1293-L40K(L)-MVOLT-8MAT-8MAT		BZ	--
OE	3" ROUND WALL SCONCE - DIRECT/INDIRECT	LED	IN UNIT	4000	80+	0-10V	1	25	120	W	6'-0" TCF AFG	N	16"	LUMINIS	SYRROS SY302-L2L10-WDU-WVD-40K-MVOLT-L4SLULSLD-BZT		BZ	--
OF	6" ROUND WALL SCONCE - DIRECT	LED	IN UNIT	4000	80+	0-10V	1	26	120	W	6'-0" TCF AFG	N	11"	LUMINIS	SYRROS SY600-L1L25-WVD-40K-MVOLT-L4SL-BZT		BZ	--
OG	6" PATIO WALL SCONCE	LED	IN UNIT	4000	80+	0-10V	1	16	120	W	6'-0" TCF AFG	N	12 1/2"	LUMINIS	JAKI JA12L2L2-40K-MVOLT-BZT		BZ	--
OH	42" LIT BOLLARD	LED	IN UNIT	4000	80+	0-10V	1	8	120	GR	--	N	41 1/2"	LITHONIA	RADEAN RAD8 LED-P2-40K-SYM-MVOLT-DMG-BTT-BCF-DOBXD		BZ	1
OJ	PEDESTRIAN POLE LIGHT - PATHWAY	LED	IN UNIT	4000	80+	0-10V	1	25	120	PL	10'-0" AFG TTF	N	26"	LITHONIA	RADEAN RADPT LED-P1-40K-PATH-MVOLT-PT4-DMG-DOBXD / RSS-8-4B-PT-STLHHC-FBCSTL2PC-DOBXD		BZ	2
OK	PEDESTRIAN POLE LIGHT - AREA	LED	IN UNIT	4000	80+	0-10V	1	25	120	PL	10'-0" AFG TTF	N	26"	LITHONIA	RADEAN RADPT LED-P1-40K-SYM-MVOLT-PT4-DMG-DOBXD / RSS-8-4B-PT-STLHHC-FBCSTL2PC-DOBXD		BZ	2
OL	PEDESTRIAN POLE LIGHT - ENTRY	LED	IN UNIT	4000	80+	0-10V	1	54	120	PL	12'-0" AFG TTF	N	26"	LITHONIA	RADEAN RADPT LED-P3-40K-SYM-MVOLT-PT4-DMG-DOBXD / RSS-10-4B-PT-STLHHC-FBCSTL2PC-DOBXD		BZ	3
OM	POLE MOUNTED FIXTURE - TYPE BLC4	LED	IN UNIT	4000	80+	0-10V	1	69	120	PL	25'-0" AFG TTF	N	7 1/2"	LITHONIA	DSXO LED-P3-40K-80CR-BLC4-MVOLT-RPA-DMG-DOBXD / RSS-23-4B-PT-STLHHC-FBCSTL2PC-DOBXD		BZ	4
ON	POLE MOUNTED FIXTURE - TYPE BLC4	LED	IN UNIT	4000	80+	0-10V	1	170	120	PL	25'-0" AFG TTF	N	7 1/2"	LITHONIA	DSXO LED-P7-40K-80CR-BLC4-MVOLT-RPA-DMG-DOBXD / RSS-23-4B-PT-STLHHC-FBCSTL2PC-DOBXD		BZ	4
OP	POLE MOUNTED FIXTURE - TYPE T3M	LED	IN UNIT	4000	80+	0-10V	1	45	120	PL	25'-0" AFG TTF	N	7 1/2"	LITHONIA	DSXO LED-P2-40K-80CR-T3M-MVOLT-RPA-DMG-DOBXD / RSS-23-4B-PT-STLHHC-FBCSTL2PC-DOBXD		BZ	4
OQ	POLE MOUNTED FIXTURE - TYPE T3M	LED	IN UNIT	4000	80+	0-10V	1	94	120	PL	25'-0" AFG TTF	N	7 1/2"	LITHONIA	DSXO LED-P4-40K-80CR-T3M-MVOLT-RPA-DMG-DOBXD / RSS-23-4B-PT-STLHHC-FBCSTL2PC-DOBXD		BZ	4
OR	POLE MOUNTED FIXTURE - TYPE T3LG	LED	IN UNIT	4000	80+	0-10V	1	89	120	PL	25'-0" AFG TTF	N	7 1/2"	LITHONIA	DSXO LED-P5-40K-80CR-T3LG-MVOLT-RPA-DMG-DOBXD / RSS-23-4B-PT-STLHHC-FBCSTL2PC-DOBXD		BZ	4
OS	POLE MOUNTED FIXTURE - TYPE T5M	LED	IN UNIT	4000	80+	0-10V	1	94	120	PL	25'-0" AFG TTF	N	7 1/2"	LITHONIA	DSXO LED-P4-40K-80CR-T5M-MVOLT-RPA-DMG-DOBXD / RSS-23-4B-PT-STLHHC-FBCSTL2PC-DOBXD		BZ	4
OT	POLE MOUNTED FIXTURE - TYPE T5M	LED	IN UNIT	4000	80+	0-10V	1	170	120	PL	25'-0" AFG TTF	N	7 1/2"	LITHONIA	DSXO LED-P7-40K-80CR-T5M-MVOLT-RPA-DMG-DOBXD / RSS-23-4B-PT-STLHHC-FBCSTL2PC-DOBXD		BZ	4
OY	POLE MOUNTED FIXTURE - TYPE T5M	LED	IN UNIT	4000	80+	0-10V	1	45	120	PL	25'-0" AFG TTF	N	7 1/2"	LITHONIA	DSXO LED-P2-40K-80CR-T5M-MVOLT-RPA-DMG-DOBXD / RSS-23-4B-PT-STLHHC-FBCSTL2PC-DOBXD		BZ	4.5
OV	POLE MOUNTED FIXTURE - TYPE T5M	LED	IN UNIT	4000	80+	0-10V	1	69	120	PL	25'-0" AFG TTF	N	7 1/2"	LITHONIA	DSXO LED-P3-40K-80CR-T5M-MVOLT-RPA-DMG-DOBXD / RSS-23-4B-PT-STLHHC-FBCSTL2PC-DOBXD		BZ	4
OW	BUILDING MOUNTED FIXTURE - TYPE BLC4	LED	IN UNIT	4000	80+	0-10V	1	45	120	W	16'-0" AFG TCF	N	7 1/2"	LITHONIA	DSXO LED-P2-40K-80CR-BLC4-MVOLT-RPA-DMG-DOBXD		BZ	--
OX	MONUMENT ILLUMINATION FIXTURE	LED	IN UNIT	3000	80+	ST	1	11	120	GR	--	N	8 1/2"	LITHONIA	QLBF-8-30K-DOB		BZ	--
OY	FLAGPOLE ILLUMINATION FIXTURE	LED	IN UNIT	5000	80+	ST	1	11	120	GR	--	N	8 1/2"	LITHONIA	QLBF-8-50K-DOB		BZ	--
OZ	TRELLIS STRING LIGHTING	LED	IN UNIT	3500	80+	ST	1	0	120	P	TBD	N	4"	TIVOLI	LITESPHERE 2.0 LSL2-B-18-H-35-F-12		BK	6

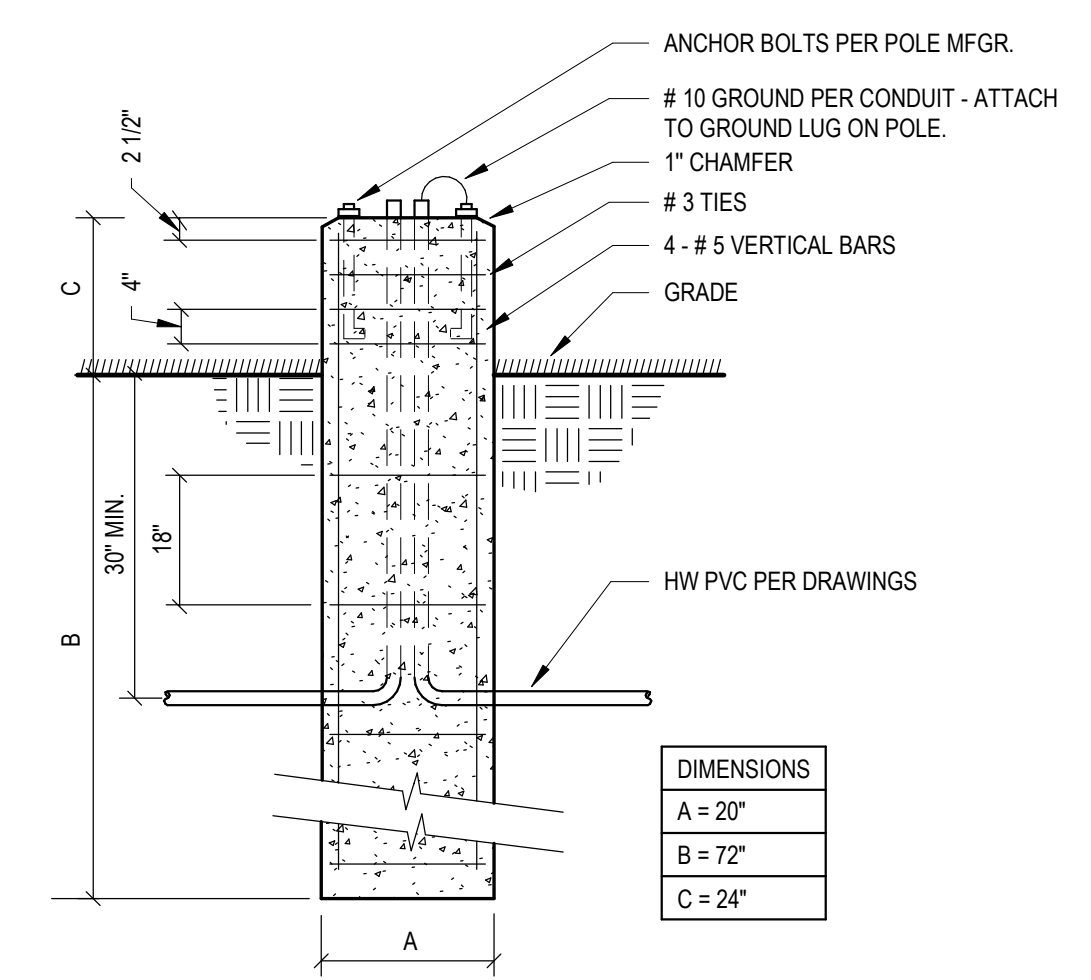
FIXTURE TYPE

ABBR.	DESCRIPTION	DRIVER/BALLAST TYPE	DESCRIPTION	MOUNTING TYPE	DESCRIPTION	CEILING TYPE	DESCRIPTION	FINISHES	DESCRIPTION
F	FLOURESCENT	0-10V	0-10 VOLT DIMMING	AFF	ABOVE FINISH FLOOR	DW	DRYWALL	A/O	COLOR AS SELECTED BY ARCHITECT/OWNER
H	HALOGEN	D1	DIMMING 1-100%	AFG	ABOVE FINISH GRADE	ES	EXPOSED STRUCTURE	BA	BRUSHED ALUMINUM
I	INCANDESCENT	D5	DIMMING 5-100%	GR	AT GRADE	LG	LAY-IN GRID	BK	BLACK
L	LIGHT EMITTING DIODE	D10	DIMMING 10-100%	P	PENDANT	N	NONE	BN	BRUSHED NICKEL
		DST	STEP DIMMING 50/100%	PL	POLE MOUNTED	V	VARIES	BZ	BRONZE
		E	ELECTRONIC	R	RECESS	CF	CUSTOM FINISH	SF	STANDARD FINISH
		M	MAGNETIC	S	SURFACE	SN	SATIN NICKEL	SS	SEMI-SPECULAR
		PS	PULSE START	W	WALL MOUNTED	WH	WHITE		
		ST	STANDARD						
		TR	TRANSFORMER						

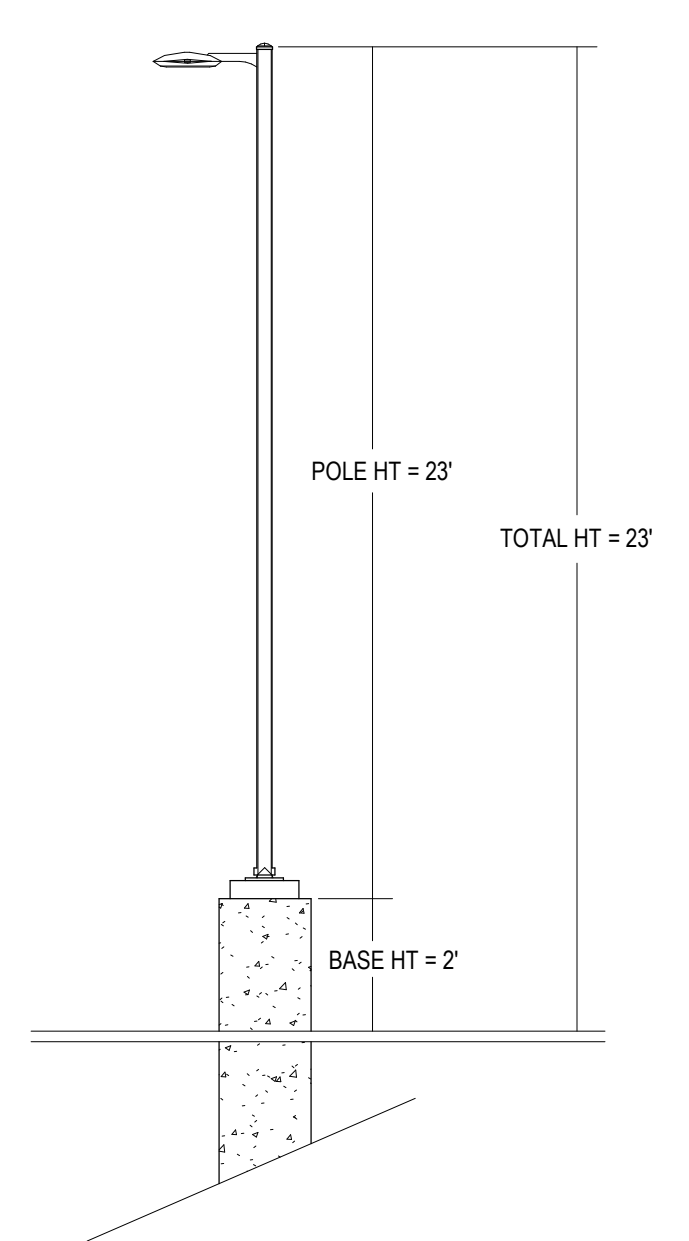
- LIGHT FIXTURE SCHEDULE REMARKS:**
- REFER TO DETAIL 1ES100A FOR BOLLARD / PEDESTRIAN BASE DETAIL.
 - PROVIDE WITH LITHONIA TYPE RSS POLE, WITH METAL POLE BASE COVER AND HANDHOLE COVER. REFER TO DETAIL 1ES100A FOR BOLLARD / PEDESTRIAN BASE DETAIL. REFER TO DETAIL 3ES100 FOR POLE HEIGHT DETAIL.
 - PROVIDE WITH LITHONIA TYPE RSS POLE, WITH METAL POLE BASE COVER AND HANDHOLE COVER. REFER TO DETAIL 1ES100A FOR BOLLARD / PEDESTRIAN BASE DETAIL. REFER TO DETAIL 4ES100 FOR POLE HEIGHT DETAIL.
 - PROVIDE WITH LITHONIA TYPE RSS POLE, WITH METAL POLE BASE COVER AND HANDHOLE COVER. REFER TO DETAIL 2ES100A FOR POLE BASE DETAIL. REFER TO DETAIL 3ES100 FOR POLE HEIGHT DETAIL.
 - PROVIDE SEPARATE CONTROLS FOR DOG PARK POLE LIGHT FIXTURE, AND PICKLEBALL COURT POLE LIGHT FIXTURES.
 - COORDINATE FINAL QUANTITY AND LAYOUT OF TRELLIS LIGHTING WITH ARCHITECT AND OWNER PRIOR TO ORDERING AND INSTALLATION.



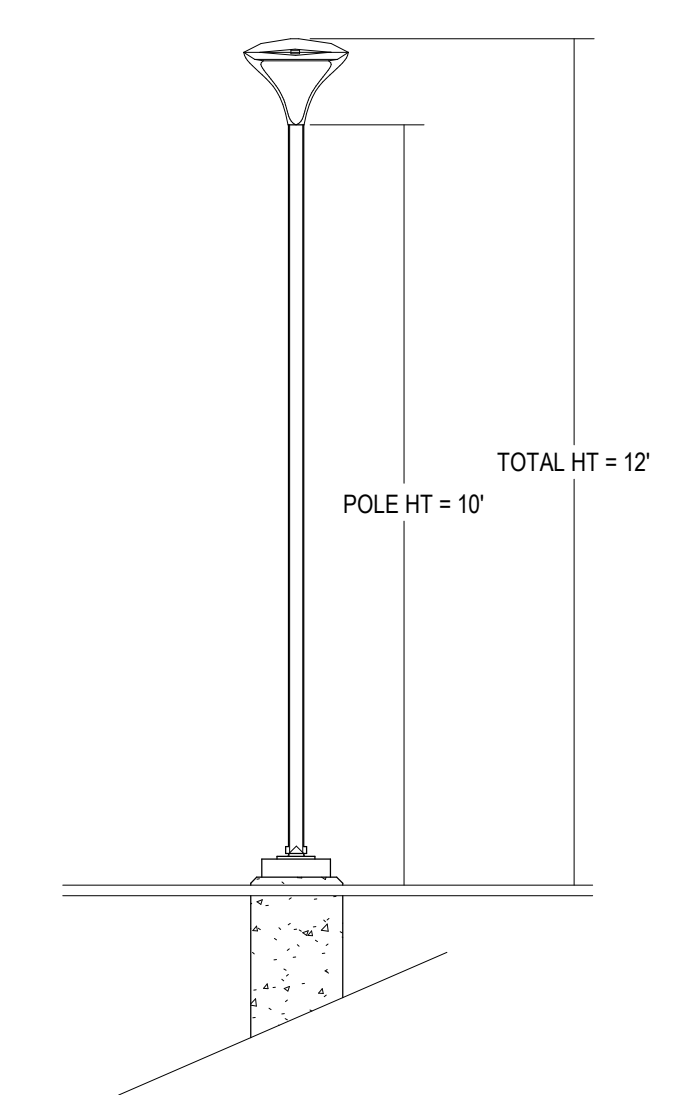
1 BOLLARD / PEDESTRIAN BASE DETAIL
ES100A SCALE: N.T.S.



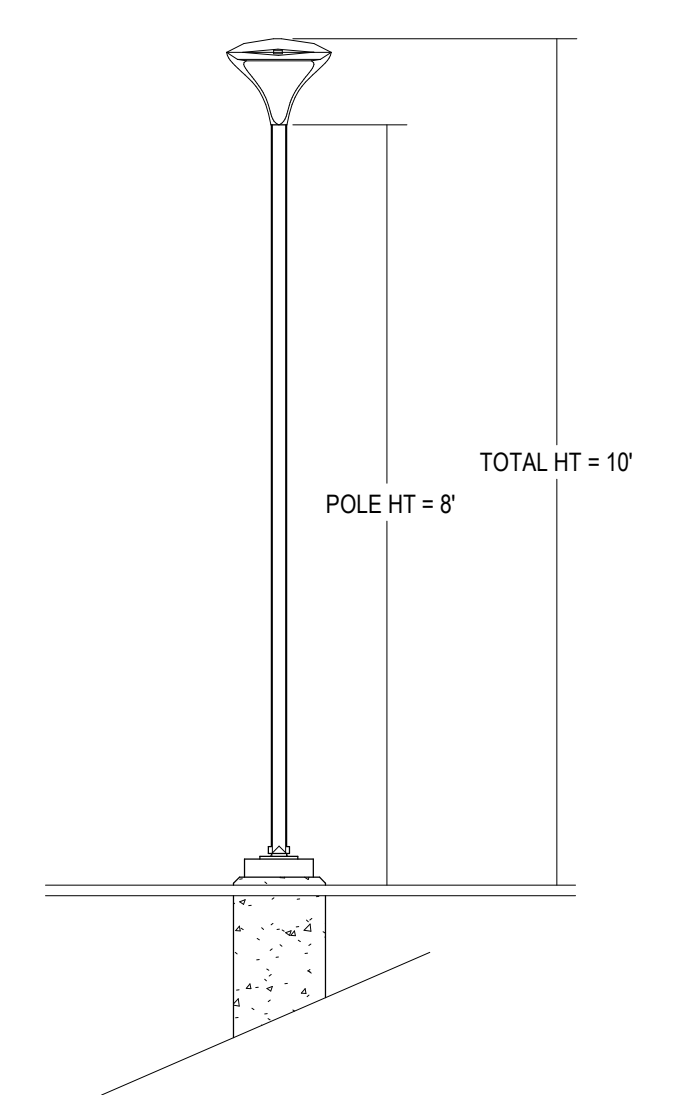
2 POLE BASE DETAIL
ES100A SCALE: N.T.S.



5 POLE HEIGHT DETAIL
ES100A SCALE: N.T.S.



4 POLE HEIGHT DETAIL - ENTRANCE
ES100A SCALE: N.T.S.



3 POLE HEIGHT DETAIL - PEDESTRIAN
ES100A SCALE: N.T.S.

ISSUANCE AND REVISIONS

DATE	DESCRIPTION
09/27/2024	PLAN COMMISSION SUBMISSION

KEY PLAN

SHEET INFORMATION

PROJECT MANAGER EMB
PROJECT NUMBER 123192-01

ELECTRICAL SITE PLAN - PLAN COMMISSION

ES100A
© 2024 Epstein Uhen Architects, Inc.