



MEMO

PLANNING AND COMMUNITY DEVELOPMENT

To: Plan Commission
From: Lily Paul, Associate Planner
Date: April 12, 2023
Re: Park Concept – Parcel 030067904; Corner of CTH CE & HH

Please review Exhibit 1 showing a park concept for the parcel in question.

This concept includes roughly a 20 foot by 20 foot covered pavilion, an 8 foot-wide, crushed-gravel path, and eye-catching vegetation on the corner of CTH CE and CTH HH. There is 0.92 acres of land to convert into a haven for frequenters of the CE Trail. The location of this project has struggled to find the right use in the past, and this project could be the solution. The pavilion will include a picnic table and benches. The crushed gravel path will be dug out, and that fill will be used to mound the center of the property and create a meadow-like area. Also, the crushed gravel path will be a large loop around the parcel, providing a safe space away from the road. The perennial vegetation will serve as a statement piece and softening element to the vast amount of asphalt and concrete surrounding the area. A unique aspect to this parklet could be fruit bearing plants and trees to create a “food forest” which will increase plant diversity and create a one of kind attraction in the region. All of these elements combined will serve as traffic calming measures, considering this location is on the corner of two busy roads/roundabout.

The Community Vision for the City of Kaukauna Recreation and Outdoor Space Plan encompasses the three following themes:

- The City of Kaukauna is a place where residents of all ages and abilities have access to high quality parks and open spaces that provide space for passive or active recreation, that encourage non-digital play, and that help achieve better health outcomes for residents.
- The City of Kaukauna is a place where residents of all ages and abilities can safely navigate the community on-foot, by bike or by alternative (non-vehicular) forms of transportation to safely access the many amenities of the community.

- The City of Kaukauna is a place where unique natural features are preserved, protected and made accessible for all residents to enjoy

This project captures all three of these themes. Not to mention, it aligns with the goals and strategies described in the Recreation and Outdoor Space Plan, Chapter 10:

<https://cityofkaukauna.com/community/parks/master-plan/>

The City of Kaukauna's main goal is to ensure connectivity by trail and sidewalks for all residents. This project is one step in the strategy to achieve that goal. The use it will receive will encourage CE Trail connections on CTH HH and through the southern residential developments in and around the City.

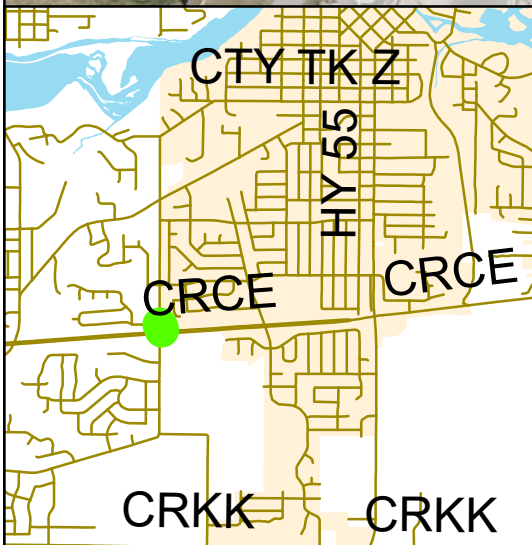
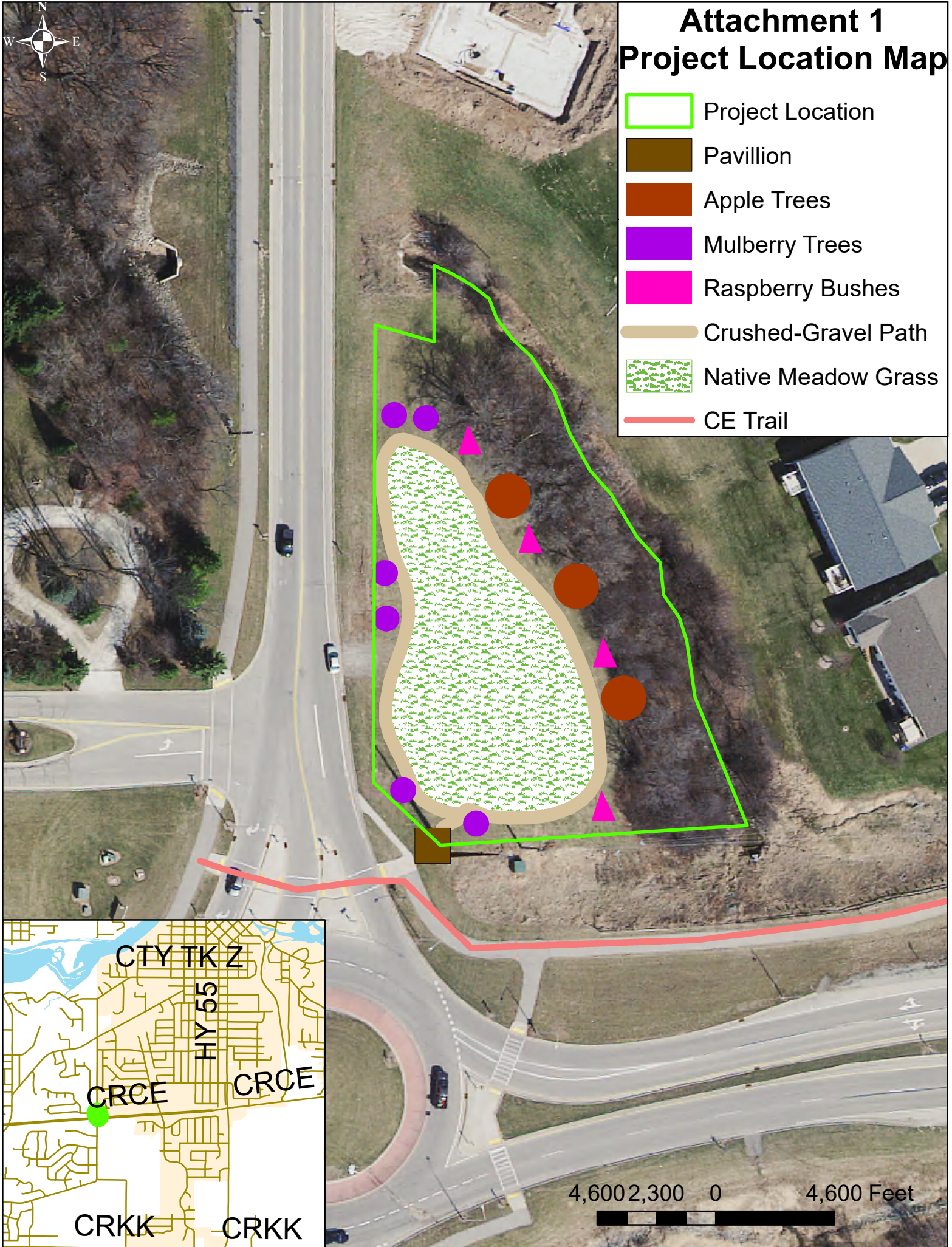
This haven will see an array of uses. The pavilion will provide shelter for those that are resting or waiting to cross the road. The crushed gravel path will provide a destination for the elderly to walk to and enjoy alternate scenery. Families with children can use the space to gather themselves so they can cross the road safely. Walkers can use the area as meeting spot to connect with friends for a social activity. It will become a benchmark to reach before crossing to the next segment of the trail. With this increase in use, safety features should be considered and this project will encourage those features.





Attachment 1 Project Location Map

-  Project Location
-  Pavillion
-  Apple Trees
-  Mulberry Trees
-  Raspberry Bushes
-  Crushed-Gravel Path
-  Native Meadow Grass
-  CE Trail



4,600 2,300 0 4,600 Feet

