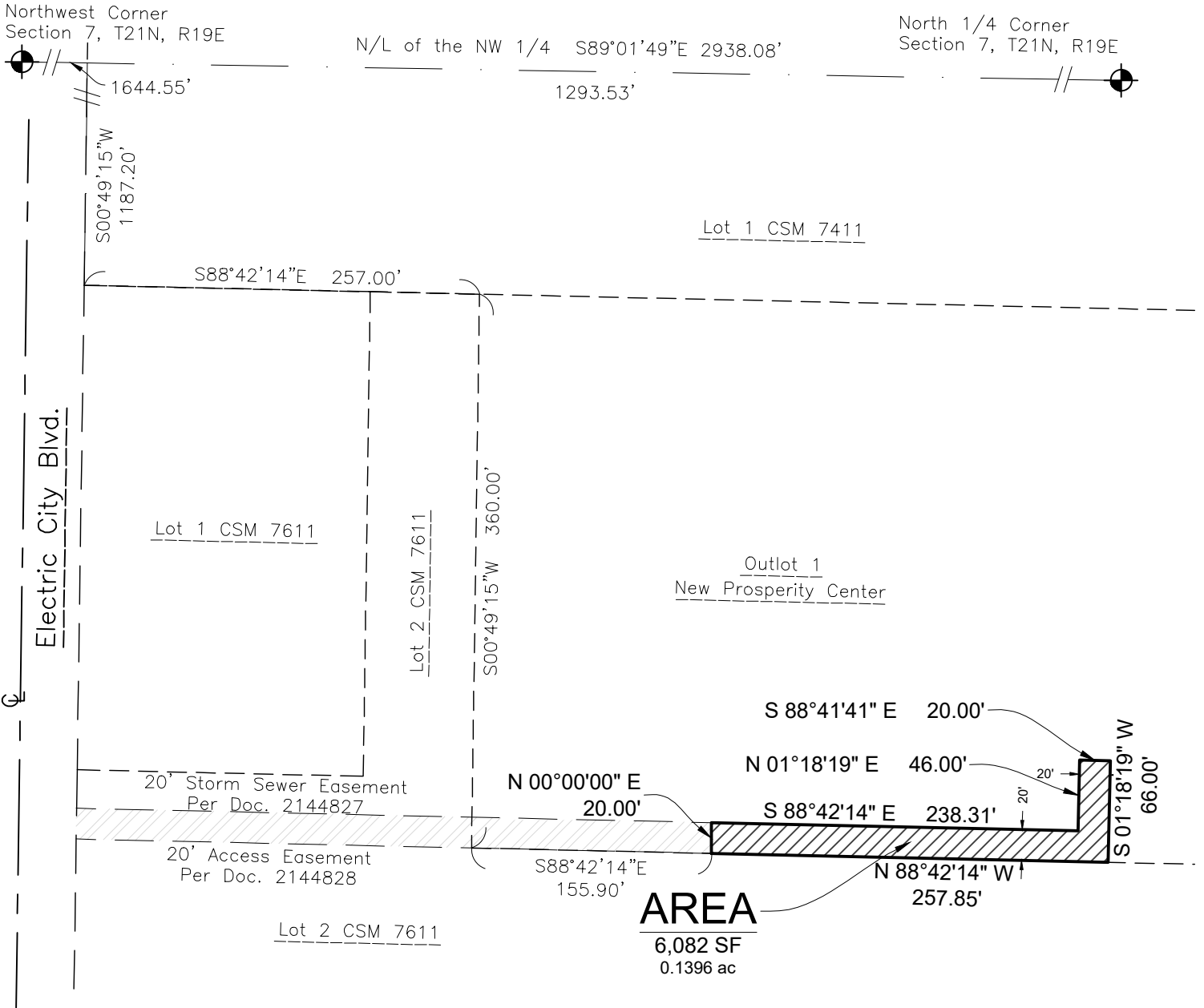
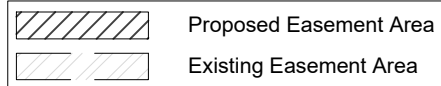


# Storm Sewer Easement Exhibit

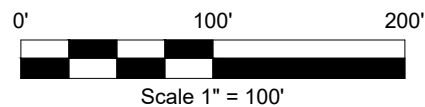
Part of Outlot 1, New Prosperity Center, Located in the Southeast 1/4 of the Northwest 1/4 of Section 7, Township 21 North, Range 19 East, City of Kaukauna, Outagamie County, Wisconsin.



*Disclaimer: This instrument is intended for conceptual review purposes ONLY. If this map is used for any other purpose other than its such intent without full approval of the City of Kaukauna and/or Outagamie County, Davel Engineering & Environmental, Inc. shall not be held responsible. Users of this map assumes all risks associated with such use and releases Davel Engineering & Environmental, Inc. from any and all liabilities and damages resulting from said use, if any.*



**DAVEL ENGINEERING & ENVIRONMENTAL, INC.**  
Civil Engineers and Land Surveyors  
1164 Province Terrace, Menasha, WI 54952  
Ph: 920-991-1866  
www.davel.pro



File: 9151Ease.dwg  
Date: 05/04/2026  
Drafted By: kristy  
Sheet: 1 of 2