

# CoVantage Credit Union Kaukauna Branch



101 E Kelso Rd  
Kaukauna, WI 54130



## SYMBOLS KEY

**EARTHWORK**

- EARTH UNDISTURBED FILL
- EARTH COMPACTED FILL
- EARTH GRANULAR FILL
- SAND

**CONCRETE**

- CONCRETE

**GLASS**

- GLASS
- GLASS BLOCK

**MASONRY**

- CONCRETE MASONRY UNIT
- BRICK

**WOOD**

- LUMBER
- FINISH WOOD
- WOOD BLOCKING
- PLYWOOD

**INSULATION**

- BATT/LOOSE INSULATION
- RIGID INSULATION

**METALS**

- STEEL
- ALUMINUM

**North Arrow**

**100'-0"**

**NEW ELEVATION POINT**

**EXISTING ELEVATION POINT**

**ELEVATION TARGET**  
EL=100'-0"

**1** COLUMN CENTERLINE

**1 A101** BUILDING SECTION

**1 A101** WALL SECTION

**1 A101** ENLARGED PLAN/DETAIL

**1 A101** DETAIL SHEET

**1 A101** DETAIL SHEET

**OFFICE 104** ROOM NAME ROOM NUMBER

**WORK DESCRIPTION NOTE**

**DEMO WORK DESCRIPTION NOTE**

**DETAIL DESCRIPTION NOTES**

**WINDOW OR ROOF AREA**

## AREA MAP



## INDEX OF DRAWINGS

T101	TITLE SHEET	A001	LIFE SAFETY PLAN
C101	DEMOLITION PLAN	A101	FLOOR PLAN, WALL TYPES, MISC DETAILS
C200	OVERALL SITE LAYOUT PLAN	A201	ELEVATIONS/DOOR SCHEDULE/WINDOW ELEVATIONS
C201	SITE LAYOUT PLAN	A301	REFLECTED CEILING PLANS/DETAILS
C300	GRADING PLAN	A401	BUILDING SECTION/WALL SECTIONS
C400	UTILITY PLAN	A402	WALL SECTIONS/DETAILS
C800	SITE DETAILS	A403	WALL SECTION DETAILS
C801	SITE DETAILS	A410	DRIVE-UP ITM CANOPY
C802	SITE DETAILS/SIGNAGE/TRASH ENCLOSURE	A501	DETAILS
C900	EROSION CONTROL PLAN	A601	FINISH PLANS/SCHEDULE
C901	POST CONSTRUCTION EROSION CONTROL PLAN	A602	INTERIOR ELEVATIONS AND DETAILS
C902	EROSION CONTROL DETAILS	A603	INTERIOR ELEVATIONS AND DETAILS
L100	LANDSCAPE PLAN	M201	MECHANICAL PIPING PLAN
L101	LANDSCAPE PLAN	R101	ROOF PLAN/DETAILS
S001	STRUCTURAL SPECIFICATIONS	M101	MECHANICAL PLAN
S002	STRUCTURAL SPECIFICATIONS	M301	MECHANICAL SCHEDULES AND DETAILS
S101	FOUNDATION PLANS	E001	ELECTRICAL SITE PLAN
S102	FOUNDATION PLANS	E101	ELECTRICAL POWER PLAN
S201	FRAMING PLANS	E201	ELECTRICAL LIGHTING PLAN
S202	FRAMING PLANS	E301	IT, SECURITY, & AUDIO PLAN
S203	HEADER PLANS & SCHEDULES	E501	ELECTRICAL SCHEDULES & DETAILS
S301	STRUCTURAL SECTIONS	P101	PLUMBING PLAN
S302	STRUCTURAL SECTIONS	P201	ENLARGED PLUMBING PLANS
S401	FOUNDATION DETAILS	P301	PLUMBING SCHEDULES & DETAILS
S402	FOUNDATION DETAILS	P302	PLUMBING ISOMETRICS
S501	STRUCTURAL DETAILS		



404 N. Main Street, Suite 601  
Oshkosh, Wisconsin 54901

www.martin-riley.com  
ph 920.267.3600

DATE  
2025-04-24

SET NUMBER



Kaukauna Branch

CoVantage Credit Union

COMMISSION NO.  
O25006



Technical drawings of a typical drinking fountain/water cooler. The front view shows a unit with a top width of 17"-19" and a height of 27" MIN. The base has a width of 11" MIN. and a depth of 6" MIN. The side view shows a unit with a top width of 38"-43" and a height of 27" MIN. The base has a width of 9" MIN. and a depth of 36" MAX. TO BUBBLER. The unit is labeled "TYPICAL DRINKING FOUNTAIN / WATER COOLER".

The image contains two technical drawings illustrating required clearances for lavatories and toilets.

**LAVATORY - WALL MOUNT**

This drawing shows a side view of a wall-mounted lavatory. Key dimensions and labels include:

- LEVER VALVE**: Located at the top of the fixture.
- 19" MAX**: Maximum height from the counter to the top of the lavatory.
- 8" MIN. KNEE CLEARANCE**: Minimum clearance from the floor to the underside of the counter.
- PIPE INSULATION**: Indicated on the wall behind the fixture.
- 34" MAX**: Maximum height from the floor to the top of the counter.
- HIGHER OF THE COUNTER**: Label pointing to the counter surface.
- 27" MIN**: Minimum height from the floor to the top of the counter.
- KNEE CLEARANCE**: Label for the space under the counter.
- 9" MIN**: Minimum clearance from the floor to the bottom of the lavatory fixture.
- TOE CLEARANCE**: Label for the space in front of the fixture.
- 58"**: Total width of the lavatory fixture.
- 40"**: Width of the lavatory body.
- 12" MIN**: Minimum clearance from the wall to the side of the fixture.
- 36" MIN**: Minimum clearance from the wall to the top of the fixture.
- 24" MIN**: Minimum clearance from the wall to the side of the fixture.
- 5"**: Small clearance dimension near the top of the fixture.
- 17"**: Width of the toilet bowl.
- TOP OF SEAT**: Label for the top of the toilet seat.
- 35"**: Distance from the center of the toilet bowl to the side wall.
- 6" MAX TOE CLEARANCE**: Maximum clearance from the floor to the front of the toilet.
- 17" MIN. TOE CLEARANCE**: Minimum clearance from the floor to the front of the toilet.
- 11" MIN. KNEE CLEARANCE**: Minimum clearance from the floor to the underside of the counter.

**TYPICAL TOILET - FLOOR MOUNTED TANK**

This drawing shows a side view of a floor-mounted toilet with a tank. Key dimensions and labels include:

- 54" MIN**: Minimum height from the floor to the top of the tank.
- 40"**: Width of the tank.
- 12" MAX**: Maximum height from the floor to the top of the tank.
- 42" MIN**: Minimum height from the floor to the top of the tank.
- 18" MIN**: Minimum height from the floor to the top of the tank.
- 40"**: Width of the toilet bowl.
- 1-1/2" MIN**: Minimum clearance from the floor to the bottom of the tank.
- 28"**: Distance from the center of the toilet bowl to the side wall.
- 15" MIN**: Minimum height from the floor to the top of the tank.
- DISPENSER OUTLET**: Label for the water dispenser outlet.
- 24"**: Width of the toilet bowl.
- 35"**: Distance from the center of the toilet bowl to the side wall.
- 17"**: Width of the toilet bowl.
- TOP OF SEAT**: Label for the top of the toilet seat.
- 6" MAX TOE CLEARANCE**: Maximum clearance from the floor to the front of the toilet.
- 17" MIN. TOE CLEARANCE**: Minimum clearance from the floor to the front of the toilet.
- 11" MIN. KNEE CLEARANCE**: Minimum clearance from the floor to the underside of the counter.

## 4 ADA Clearances

### 3 Signage


**Diagram 1: Recommended Mounting Heights**

The diagram illustrates the recommended mounting heights for various components in a baby changing station area. The components and their mounting heights are as follows:

- PAPER TOWEL DISPENSER**: 48" MAX
- HAND DRYER SOAP DISPENSER**: 48" MAX
- BABY CHANGING STATION (FUTURE)**: 48" MAX
- TRASH RECEPTACLE**: 48" MAX
- VISUAL ALARM**: 48" MAX
- FIRE ALARM PULL**: 48" MAX
- FIRE EXT. CABINET**: 60" MAX
- CIRCUIT BREAKER**: 48" MAX
- OUTLET**: 48" MAX
- H.V.A.C. CONTROL**: 48" MAX
- LIGHT SWITCH**: 48" MAX
- SECURITY CONTROL**: 48" MAX

The diagram also indicates a **MAX. HORIZONTAL** distance of 60" between the fire ext. cabinet and the other components.

## 2 Typ Mounting Locations



# 1 Life Safety Plan

1/4" = 1'-0"

PATH OF EGRESS	
DRAFT STOP	
SMOKE PARTITION	
SMOKE BARRIER	
SHAFT WALL	
FIRE PARTITION	
FIRE WALL	
FIRE BARRIER	

Required for attics w/ <30" headroom [1209.2]  
Opening size - not less than 20"x30" to any attic space required to have access [1209.2]

101 E Kelso Rd  
Kaukauna, WI 54130



**MARTIN RILEY**  
architects • engineers

404 N. Main Street, Suite 601  
Oshkosh, WI 54901

ALL IDEAS, DESIGNS, ARRANGEMENTS AND PLANS INDICATED OR REPRESENTED BY THIS DRAWING ARE OWNED BY AND THE PROPERTY OF SMARTLY, LLC, AND WERE CREATED, DEVELOPED AND/OR USED FOR AND IN CONNECTION WITH THE SPECIFIC PROJECT. IDEAS, DESIGNS, ARRANGEMENTS AND PLANS SHALL BE USED BY AND CONVEYED TO ANY PERSON OR PERSONS FOR THE PROJECT ONLY, WITHOUT ANY FURTHER PERMISSION OR CONSENT FROM SMARTLY, LLC. ANY REUSE OR REPRODUCTION OF ANY OF THE INFORMATION CONTAINED HEREIN FOR ANY OTHER PROJECT OR PROJECTS WITHOUT THE WRITTEN PERMISSION OF SMARTLY, LLC IS STRICTLY PROHIBITED. THE DESIGNER SHALL BE RESPONSIBLE FOR ALL DIMENSIONS AND CONDITIONS ON THE JOB AND THIS OFFICE MUST BE NOTIFIED OF ANY VARIATION FROM THE DIMENSIONS AND CONDITIONS BY THE FIELD SUPERVISOR. ANY CHANGES MUST BE SUBMITTED TO THIS OFFICE FOR APPROVAL. THE DESIGNER SHALL BE RESPONSIBLE FOR THE DESIGN CONFORMANCE WITH THE DESIGN CODES APPLICABLE TO THE PROJECT. THE LIMITED PURPOSE OF CHECKING FOR CONFORMANCE WITH INFORMATION GIVEN AND THE DESIGN CODES APPLICABLE TO THE PROJECT DOES NOT PRECEDE PROCEEDING WITH FABRICATION.



DOCUMENT IN PROGRESS  
NOT FOR CONSTRUCTION

REVISION: \_\_\_\_\_ DATE: \_\_\_\_\_

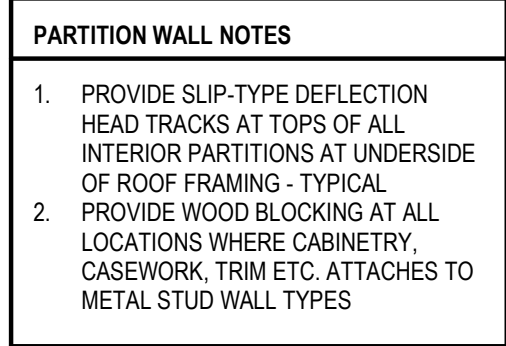
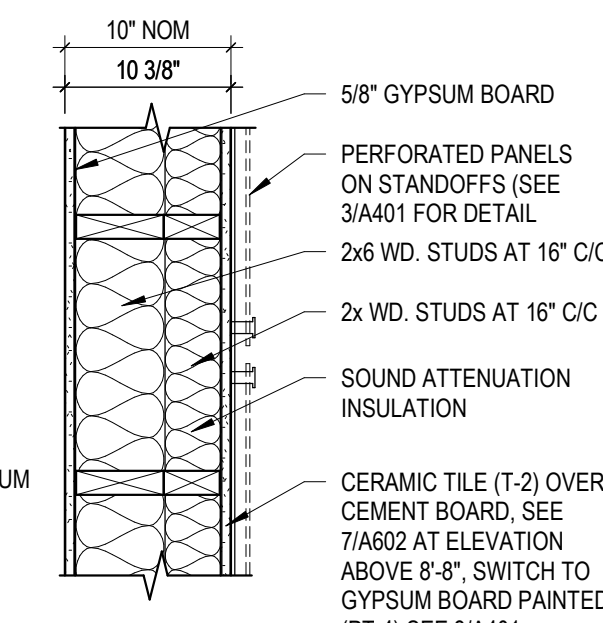
DRAWN BY:	GW	REVIEWED BY:	NH
COMMISSION NUMBER:	025006	DATE:	2025-04-24

# A001

LIFE SAFETY PLAN

O25006 CoVantage Credit Union  
Kaukauna Branch  
4/25/2025 10:17:04 AM  
C:\Users\GWynveen\Documents\O25  
CD



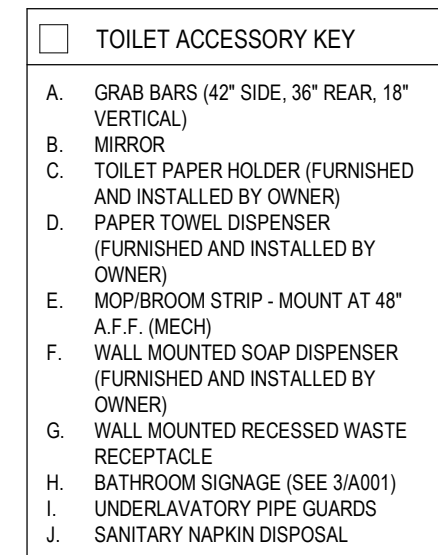

$$1'' = 1'-0''$$


◇ Work Description Notes

- 1 EQUIPMENT BY OWNER: A INTERACTIVE TELLER MACHINE, B SELF COIN SORTER, C COPY MACHINE. GWB TO HAVE 'J' CASING BEND.
- 2 FRP BOARD, SEE ELEVATION 5/A603
- 3 20" X 30" ATTIC ACCESS HATCH, SEE DETAIL, 4/A301.
- 4 FLUSH GWB WALL INSIDE WITH 5/8" GWB AND 2X4 FRAMING AS NEEDED WITH STUD BATT INSULATION AND, TO INSIDE, VAPOR BARRIER
- 5 66x34 GRADE A/C PLYWOOD, TOP AT 7'-6" AFF, SECURELY ATTACH TO WALL AND PAINT WITH TWO (2) COATS OF LIGHT-COLORED FIRE RETARDANT PAINT
- 6 KNOX BOX FOR FIRE DEPARTMENT ACCESS - CONFIRM EXACT LOCATION WITH AHJ
- 7 CONCRETE SPLASH BLOCK, TYPICAL AT ALL ROOF DRAIN LEADERS AND DOWNSPOUTS EMPTYING TO GRADE, SEE FLOOR PLAN FOR LOCATIONS.
- 8 30W/16H IN-WALL BLOCKING (1'-7" FROM CORNER AND 3'-1" AFF TO CENTER) FOR FUTURE BABY CHANGING STATION.
- 9 (3) 30" X 40" X 1/2" PL CUSTOM SIZE ADJUSTABLE SHELVES
- 10 FUR OUT CUFFS
- 11 COUNTER - REFER TO 2/A602
- 12 PROVIDE BLOCKING FOR ALL EQUIPMENT INCLUDING OWNER SUPPLIED
- 13 ARCHED BOTTOM BULKHEAD ABOVE
- 14 RECESSED WALL HEATER - SEE MECHANICAL
- 15 PROVIDE BLOCKING FOR OWNER-SUPPLIED TV
- 16 TO ROOM 108/109 SIDE, 1x4 TRIM WITH WEATHERSTRIPPING AT JAMES AND (JUST ABOVE MACHINE) HEAD OF WALL OPENING AT ITM AND COIN SORTER OPENINGS, PAINT TO MATCH ADJACENT WALL
- 17 TO ROOM 109 SIDE, 1x4 TRIM WITH WEATHERSTRIPPING AT JAMES AND (JUST ABOVE MACHINE) HEAD OF WALL OPENING AT ITM AND COIN SORTER OPENINGS, PAINT TO MATCH ADJACENT WALL
- 18 WALL TO BE CONSTRUCTED OF TWO LAPPING STUD WALLS TO ACCOUNT FOR VARYING WIDTH

## General Notes

1. ALL WORK SHALL BE PERFORMED IN ACCORDANCE WITH FEDERAL, STATE AND LOCAL OR OTHER GOVERNING BODIES' CODES. ADDITIONALLY, WORK SHALL BE COMPLETED IN ACCORDANCE WITH APPLICABLE INDUSTRY STANDARDS OR GUIDELINES.
2. ALL DIMENSIONS ARE TO THE FACE OF MASONRY FACE OF EXISTING WALL AND/OR FACE OF NEW FRAMING UNLESS NOTED OTHERWISE.
3. INDICATED DIMENSIONS ARE TAKEN FROM CASUAL FIELD OBSERVATION AND NOT FROM DRAWINGS. GENERAL CONTRACTOR TO VERIFY ALL DIMENSIONS IN FIELD PRIOR TO CONSTRUCTION. CONTRACTOR TO NOTIFY ARCHITECT OF ANY DISCREPANCIES. ALL CHANGES TO THE WORK SHALL BE APPROVED BY THE ARCHITECT AND OWNER PRIOR TO PROCEEDING.
4. GENERAL CONTRACTOR SHALL BE RESPONSIBLE FOR COORDINATING CONSTRUCTION EFFORTS OF ALL SUB-CONTRACTORS. FAILURE TO ANTICIPATE CHANGES OR MODIFICATIONS SHALL NOT BE THE BASIS FOR ADDITIONAL COST REQUESTS.
5. OWNER TO FINISH SCHEDULE FOR ADDITIONAL INFORMATION.
6. CONTRACTOR TO PROVIDE EITHER 2x WOOD BLOCKING OR FIBER OR METAL BACKING PLATES FOR THE SUPPORT OF ALL WALL MOUNTED EQUIPMENT INCLUDING CABINETS, TOTE ACCESSORIES, ETC. AS REQUIRED TO ALLOW FOR PROPER ATTACHMENT. CONTRACTOR TO FIELD VERIFY THE SCOPE OF WORK.
7. FURNITURE SHOWN ON FLOOR PLAN IS REPRESENTATIONAL ONLY AND ITS SUPPLY AND INSTALLATION IS NOT INCLUDED.
8. ALL PENETRATIONS THROUGH WALL, CEILING, AND FLOOR ASSEMBLIES ARE TO BE SEALED.



O25006 CoVantage Credit Union  
Kaukauna Branch  
4/25/2025 10:17:05 AM  
C:\Users\GWynveen\Documents\O25006  
CD

New Construction Work for :

CoVantage Credit Union  
Kaukauna Branch

101 E Kelso Rd  
Kaukauna, WI 54130



**MARTIN RILEY**  
architects • engineers

404 N. Main Street, Suite 601  
Oshkosh, WI 54901

www.martin-riley.com  
pho 920.267.3600

[illegible]

REVISION: \_\_\_\_\_ DATE: \_\_\_\_\_

DRAWN BY: GW  
COMMISSION NUMBER: 025006

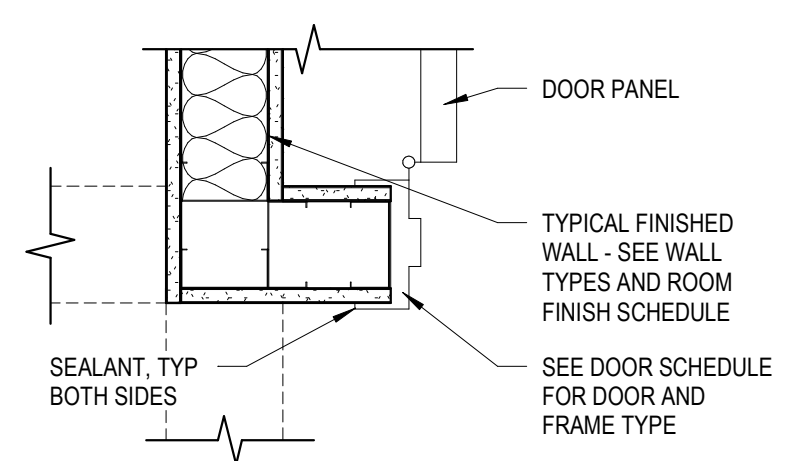
REVIEWED BY: NH  
DATE: 2025-04-24

# A101

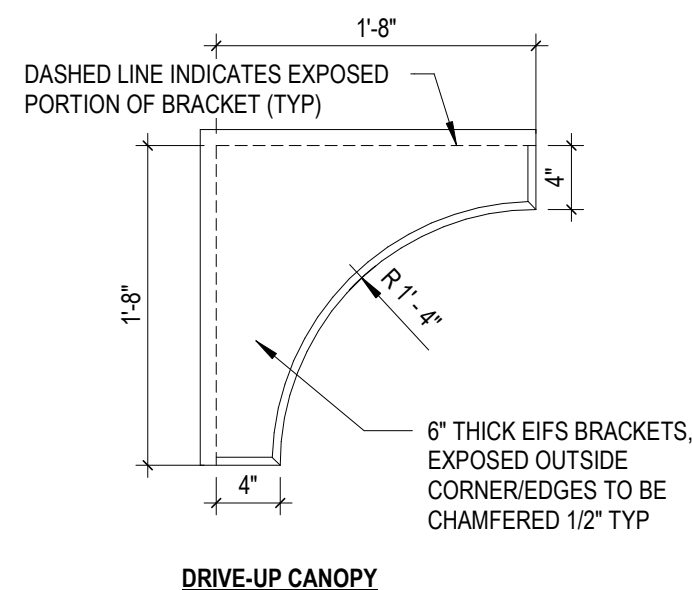
## FLOOR PLAN, WALL TYPES, MISC DETAILS



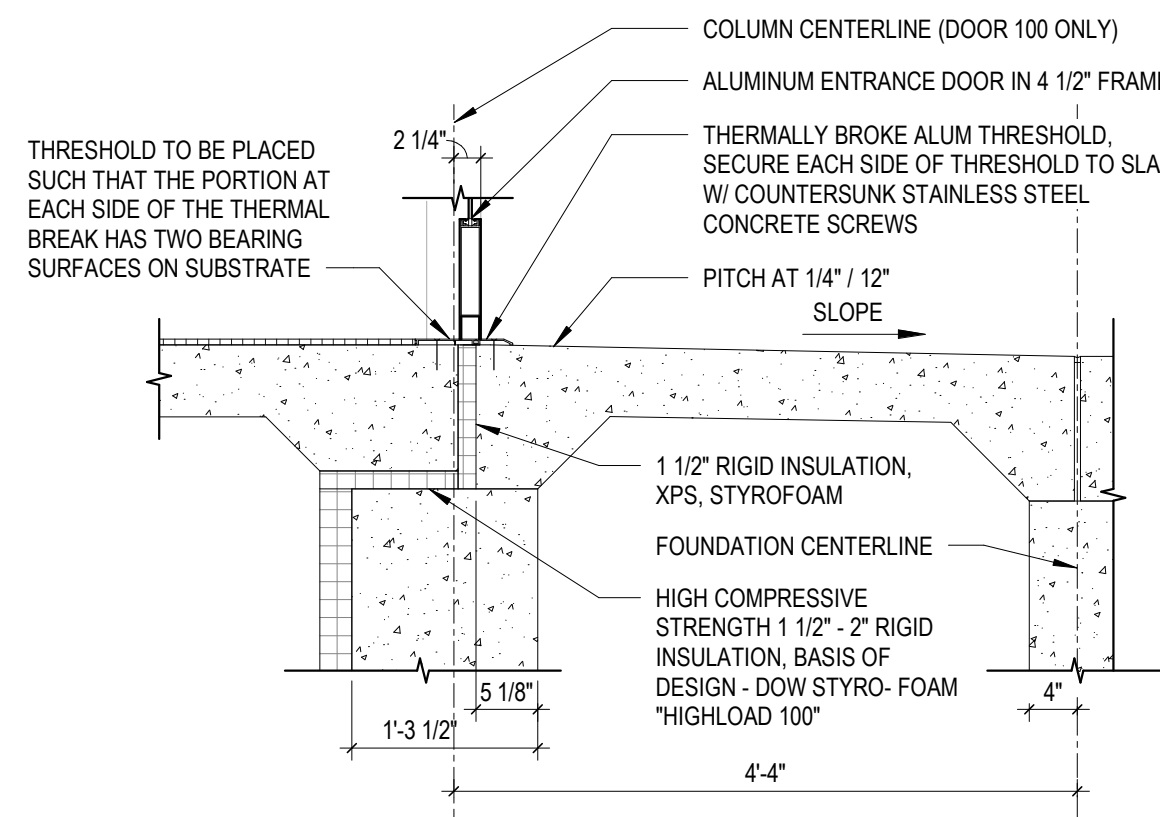
REMARKS
1. POWER DOOR OPERATOR 2. INSULATED 1" GLASS
GENERAL NOTES
1. PAINT HOLLOW METAL DOOR, FRAMES AND HOLLOW METAL WINDOW FRAMES IN ALL ROOMS WHERE WORK IS BEING PERFORMED 2. PROVIDE SEALANT BETWEEN DOOR FRAMES AND ADJACENT SURFACE. PAINT OR COLOR TO MATCH 3. FIELD VERIFY ALL EXISTING CONDITIONS 4. PROVIDE STEEL LINTELS AND INFILL MASONRY AS REQUIRED FOR NEW OPENINGS AND OPENING MODIFICATIONS. SEE STRUCTURAL 5. PROVIDE DOOR SILENCERS AT ALL SCHEDULED DOORS 6. FILL AND SAND ANY HOLES IN HOLLOW METAL DOORS AND FRAMES 7. PROVIDE BLANK TRIMS FOR DOORS AS REQUIRED 8. PROVIDE DOOR SIGNAGE IN AREAS OF WORK. REFER TO DETAILS AND FINISH SCHEDULE 9. SEE SPECIFICATION SECTION 08413 & 08710 FOR HARDWARE GROUP DESCRIPTIONS 10. SEE SPECIFICATION SECTION 084113 FOR PRE-FINISHED DOOR COLORS 11. ALL WOOD DOORS TO BE PRE-FINISHED BY DOOR MANUFACTURER SEE SPECIFICATIONS SECTION 08 1413 12. ALL HM DOOR FRAMES ARE TO BE SET SUCH THAT A UNIFORM CLEARANCE BETWEEN DOOR LEAF & FRAME IS MAINTAINED AT THE PERIMETER OF THE DOOR



## 12 Frame Offsets (Typ U.N.O.)

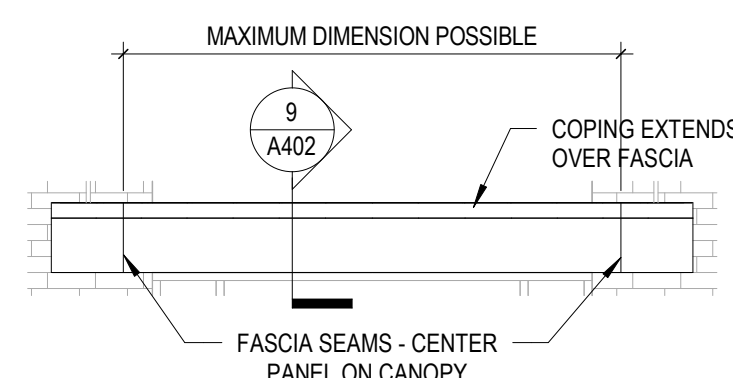


## 7 Sm. Decorative Bracket Detail

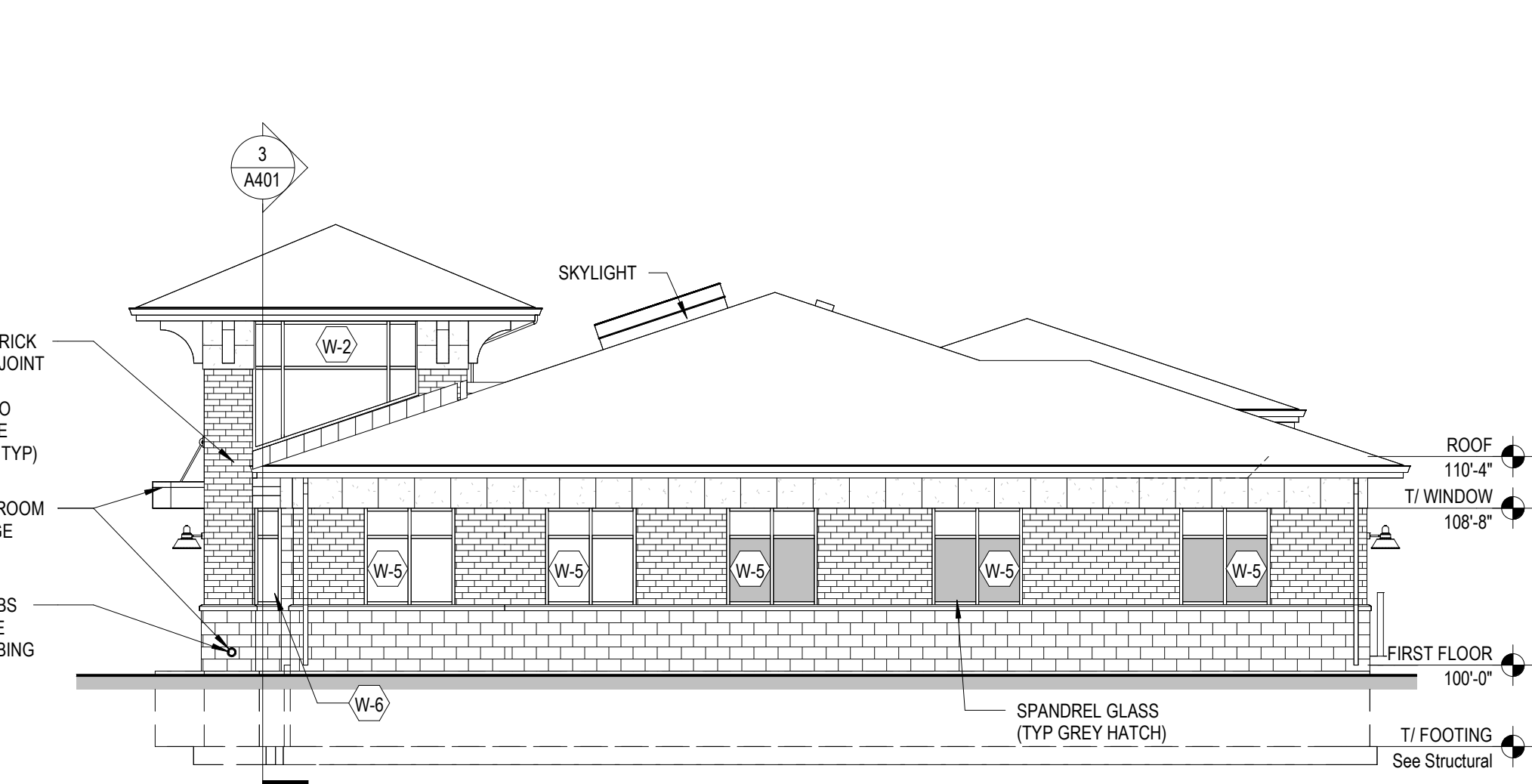


## 7.1 Lg. Decorative Bracket Detail

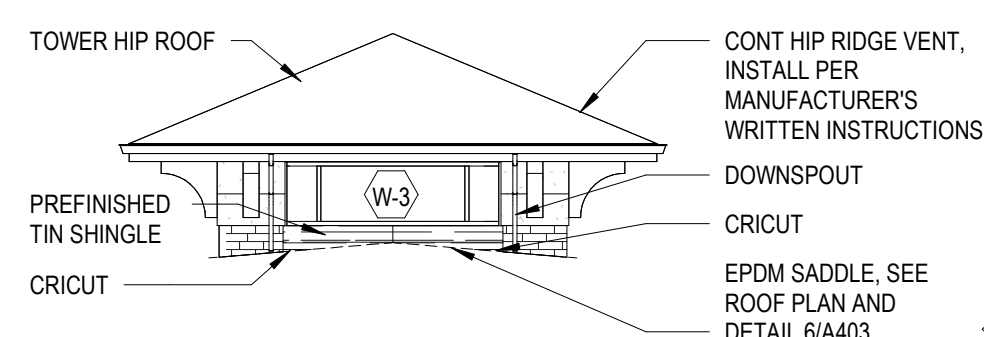
## 13 Entry Door Sill Detail



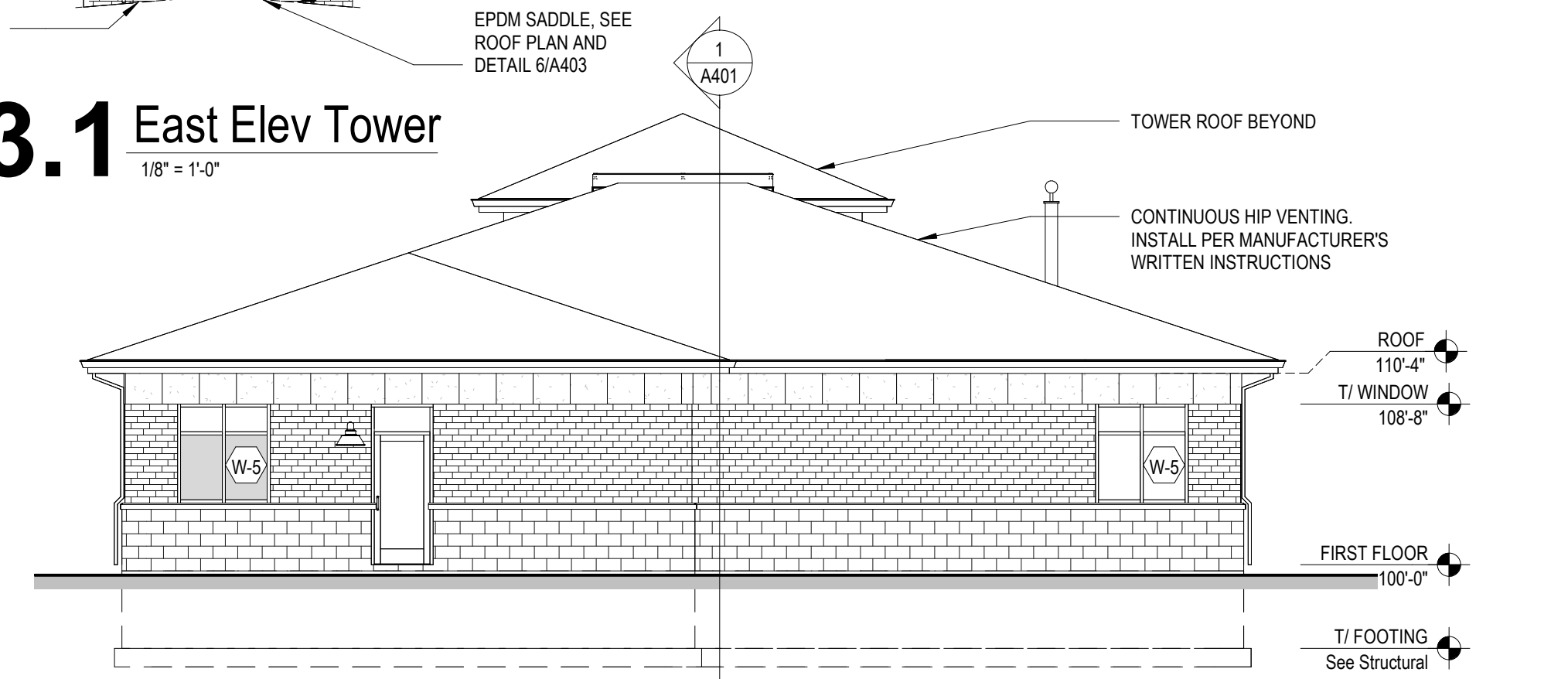
## 9 Canopy Elevation Detail



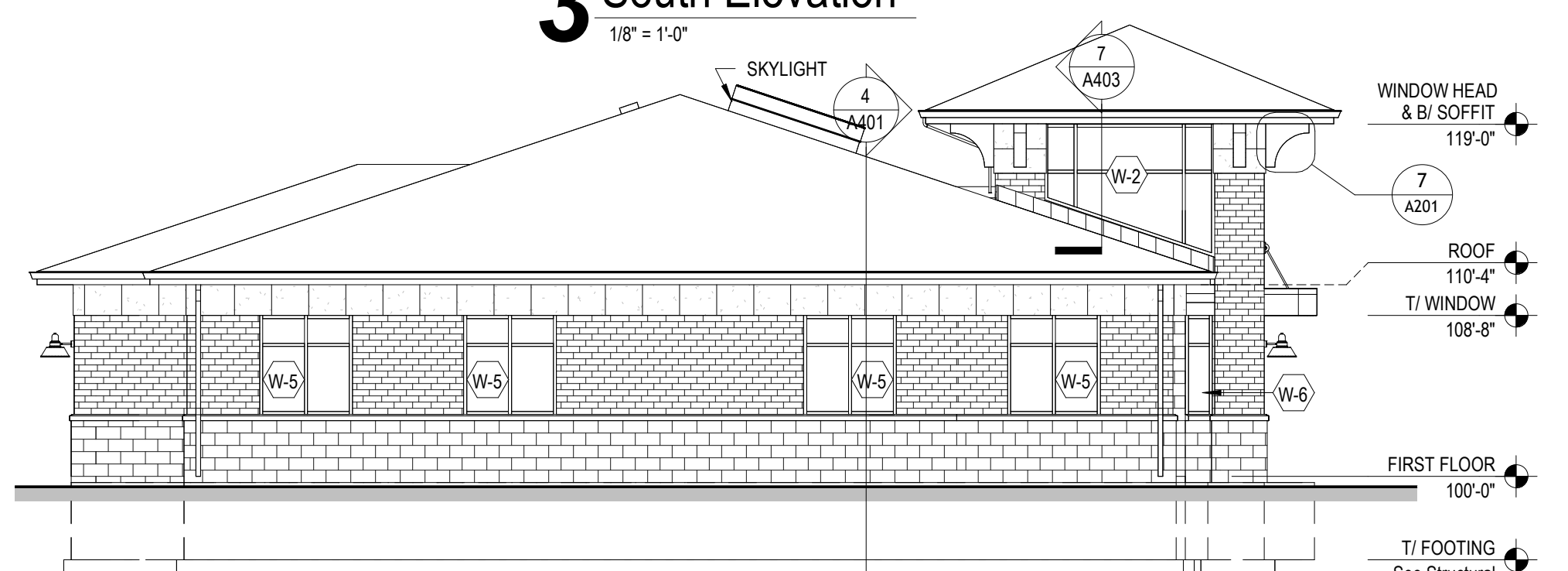
## 4 West Elevation



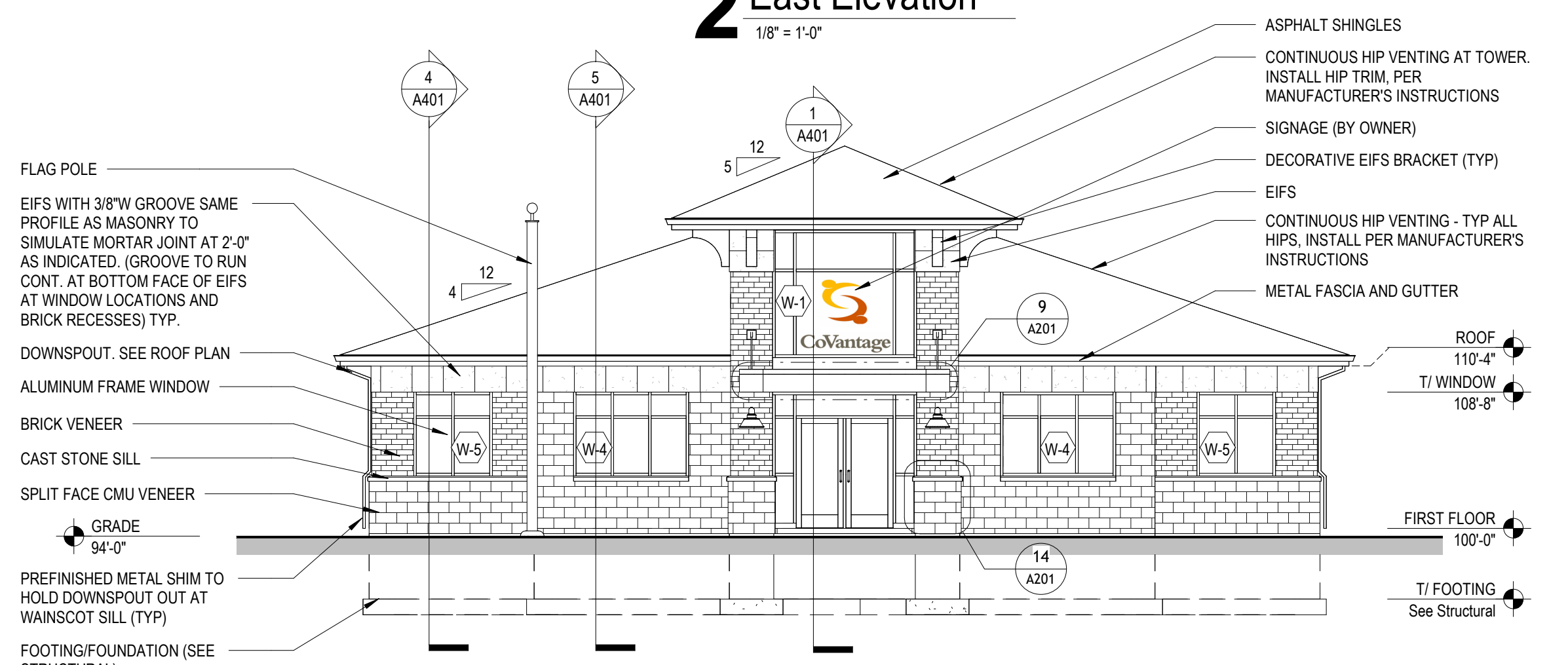
### 3.1 East Elev Tower



### 3 South Elevation



## 2 East Elevation



## 1 North Elevation

101 E Kelso Rd  
Kaukauna, WI 54130



404 N. Main Street, Suite 601  
Oshkosh, WI 54901

www.martin-riley.com  
pho 920.267.3600

ALL IDEAS, DESIGN, ARRANGEMENTS AND PLANS INDICATED OR REPRESENTED BY THIS DRAWING ARE OWNED BY, AND THE PROPERTY OF MARTIN ARNOLD, INC. AND WERE CREATED, EVOLVED, AND DEVELOPED FOR USE ON, AND IN CONNECTION WITH THE PROJECT. NONE OF THE IDEAS, DESIGN, ARRANGEMENTS OR PLANS INDICATED OR REPRESENTED BY THIS DRAWING ARE TO BE REPRODUCED OR USED BY ANY INDIVIDUAL OR ENTITY, INCLUDING ANY OTHER PERSON, FIRM OR CORPORATION FOR ANY PURPOSE, WHATSOEVER, WITHOUT THE WRITTEN PERMISSION OF MARTIN ARNOLD, INC. WRITTEN PERMISSIONS ON THESE DRAWINGS SHALL HAVE PRECEDENCE OVER SCALE DIMENSIONS. CONTRACTORS SHALL VERIFY AND BE RESPONSIBLE FOR ALL DRAWINGS AND CONDITIONS ON THE JOB AND THIS DESIGN MUST BE NOTIFIED OF ANY VARIATION FROM THE DRAWINGS AND CONDITIONS OF THE PROJECT. NO OTHERS ARE TO BE SUBMITTED TO THIS OFFICE FOR REVIEW OR THE LIMITED PURPOSE OF CHECKING FOR CONFORMANCE WITH INFORMATION GIVEN AND THE DESIGN CONCEPT DESCRIBED IN THE CONTRACT DOCUMENTS BEFORE PROCEEDING WITH FABRICATION.



REVISION:	DATE:
1 CHANGES FROM MENASHA SET	2025-02-24

DRAWN BY: GW  
COMMISSION NUMBER: 025006

REVIEWED BY: NH  
DATE: 2025-04-24

# A201

ELEVATIONS/DOOR  
SCHEDULE/WINDOW  
ELEVATIONS

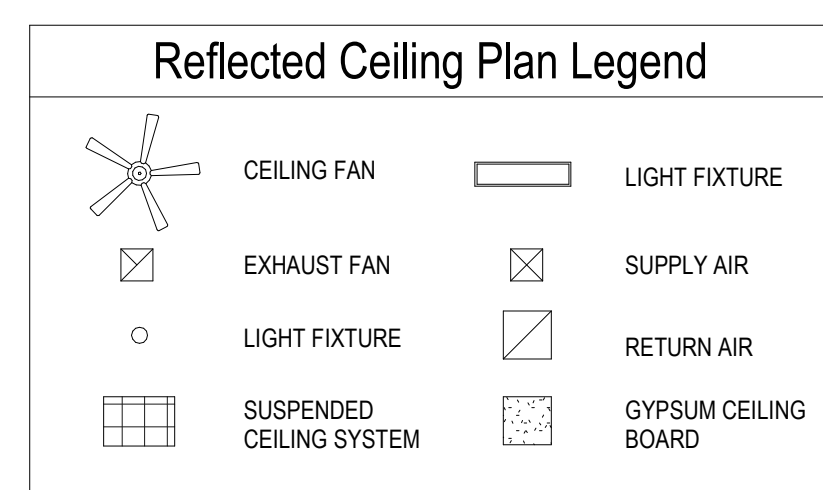




- 1 20" x 30" ATTIC ACCESS HATCH, SEE 4/A301
- 2 BULKHEAD - 3/8" STD. STUDS, 16" C/C, W/ 5/8" GWB BTM SIDES, BTM AT 2" BELOW ACT CLG. TOP OF STUDS AT 2" ABOVE GWB C/LG TO NORTH, PAINT EXPOSED GWB TO MATCH PAINT OF ADJOINING ROOMS
- 3 1-HR RATED CEILING - REFER TO DETAIL 5/A501
- 4 20" x 30" INSULATED FLUSH ATTIC ACCESS HATCH, SEE 6/A301
- 5 16"x16"x2" FAN BOX ENCLOSURE TO TRUSS BOTTOM FRAME AS REQ.
- 6 CEILING FAN - SEE MECHANICAL

## General RCP Notes

1. SEE LIGHTING PLAN FOR ALL LIGHT FIXTURE LOCATIONS
2. SUPPLY AND RETURN AIR DIFFUSERS ARE NOT SHOWN, SEE MECHANICAL
3. PRIME AND PAINT ALL TOPS OF SOFFITS (PT-5)



New Construction Work for :

CoVantage Credit Union  
Kaukauna Branch

101 E Kelso Rd  
Kaukauna, WI 54130



**MARTIN RILEY**  
architects • engineers

404 N. Main Street, Suite 601  
Oshkosh, WI 54901

www.martin-riley.com  
pho 920.267.3600



DOCUMENT IN PROGRESS  
NOT FOR CONSTRUCTION

REVISION

DATE:

DRAWN BY: GW  
COMMISSION NUMBER: 025006

REVIEWED BY: NH  
DATE: 2025-04-24

# A301

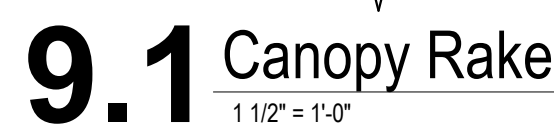
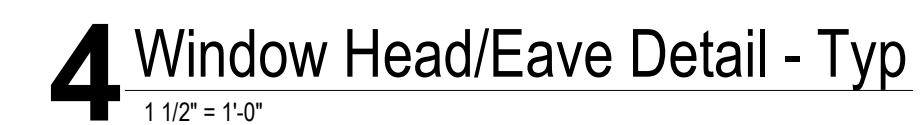
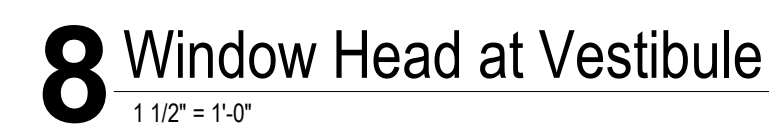
REFLECTED CEILING  
PLANS/DETAILS

O25006 CoVantage Credit Union  
Kaukauna Branch  
4/25/2025 10:17:08 AM  
C:\Users\GWynveen\Documents\O25  
CD









New Construction Work for :

CoVantage Credit Union  
Kaukauna Branch

101 E Kelso Rd  
Kaukauna, WI 54130



404 N. Main Street, Suite 601  
Oshkosh, WI 54901

www.martin-riley.com  
pho 920.267.3600

ALL IDEAS, DESIGN, ARRANGEMENTS AND PLANS INDICATED OR REPRESENTED BY THIS DRAWING ARE OWNED BY, AND ARE THE PROPERTY OF MARXIN RYKI, INC., AND WERE CREATED, EVOLVED, AND DEVELOPED FOR USE ON, AND IN CONNECTION WITH THE SPECIFIED PROJECT. NONE OF THE IDEAS, DESIGN, ARRANGEMENTS OR PLANS SHALL BE USED BY OR DISCLOSED TO ANY PERSON, OR ANY OTHER PARTY, WITHOUT THE WRITTEN PERMISSION OF MARXIN RYKI, INC. ANY VIOLATION OF THESE TERMS OR DIMENSIONS ON THESE DRAWINGS SHALL HAVE PRECEDENCE OVER SCALE DIMENSIONS. CONTRACTORS SHALL VERIFY AND BE RESPONSIBLE FOR ALL DIMENSIONS AND CONDITIONS ON THE JOB AND THIS NOTICE WILL BE NOTICED OF ANY VARIATION FROM THE DIMENSIONS AND CONDITIONS SHOWN BY THESE DRAWINGS. SHOP DETAILS MUST BE SUBMITTED TO THIS OFFICE FOR REVIEW FOR THE LIMITED PURPOSE OF CHECKING FOR CONFORMANCE WITH INFORMATION GIVEN AND THE DESIGN CONCEPT EXPRESSED IN THE CONTRACT DOCUMENTS BEFORE PROCEEDING WITH FABRICATION.



REVISION:	DATE:
1 CHANGES FROM MENASHA SET	2025-02-24

DRAWN BY: GW  
COMMISSION NUMBER: 025006

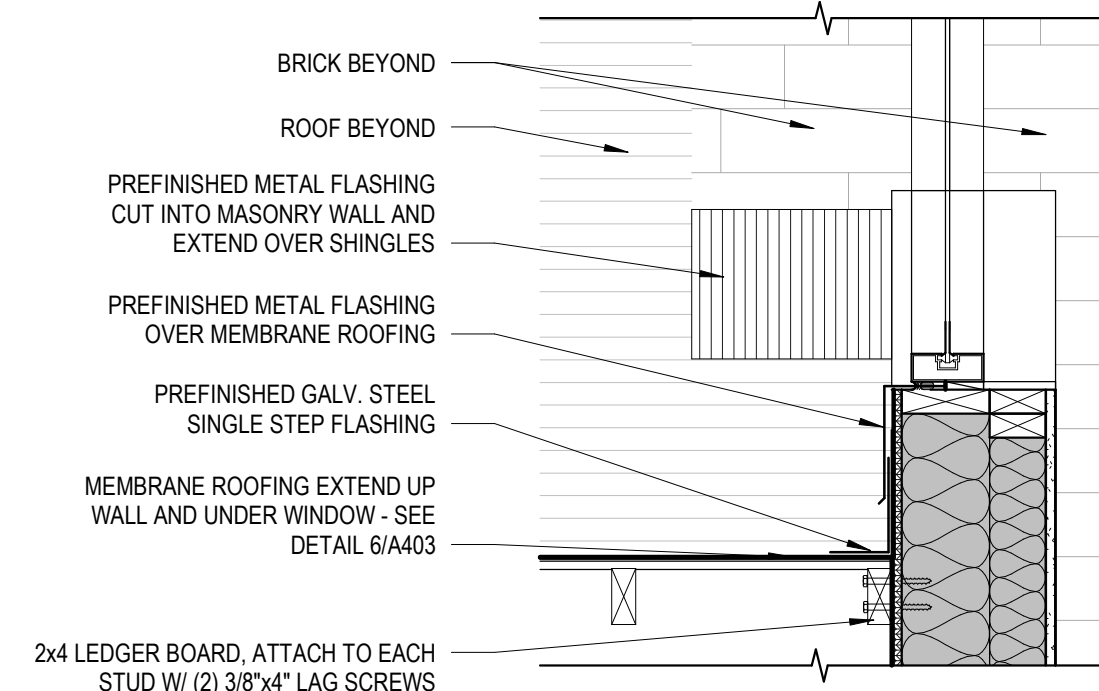
REVIEWED BY: NH  
DATE: 2025-04-24

# A402

WALL SECTIONS/DETAILS

O25006 CoVantage Credit Union  
Kaukauna Branch  
4/25/2025 10:17:09 AM  
C:\Users\GWynveen\Documents\O25  
CD





## 7 Flashing Detail at Tower



101 E Kelso Rd  
Kaukauna, WI 54130

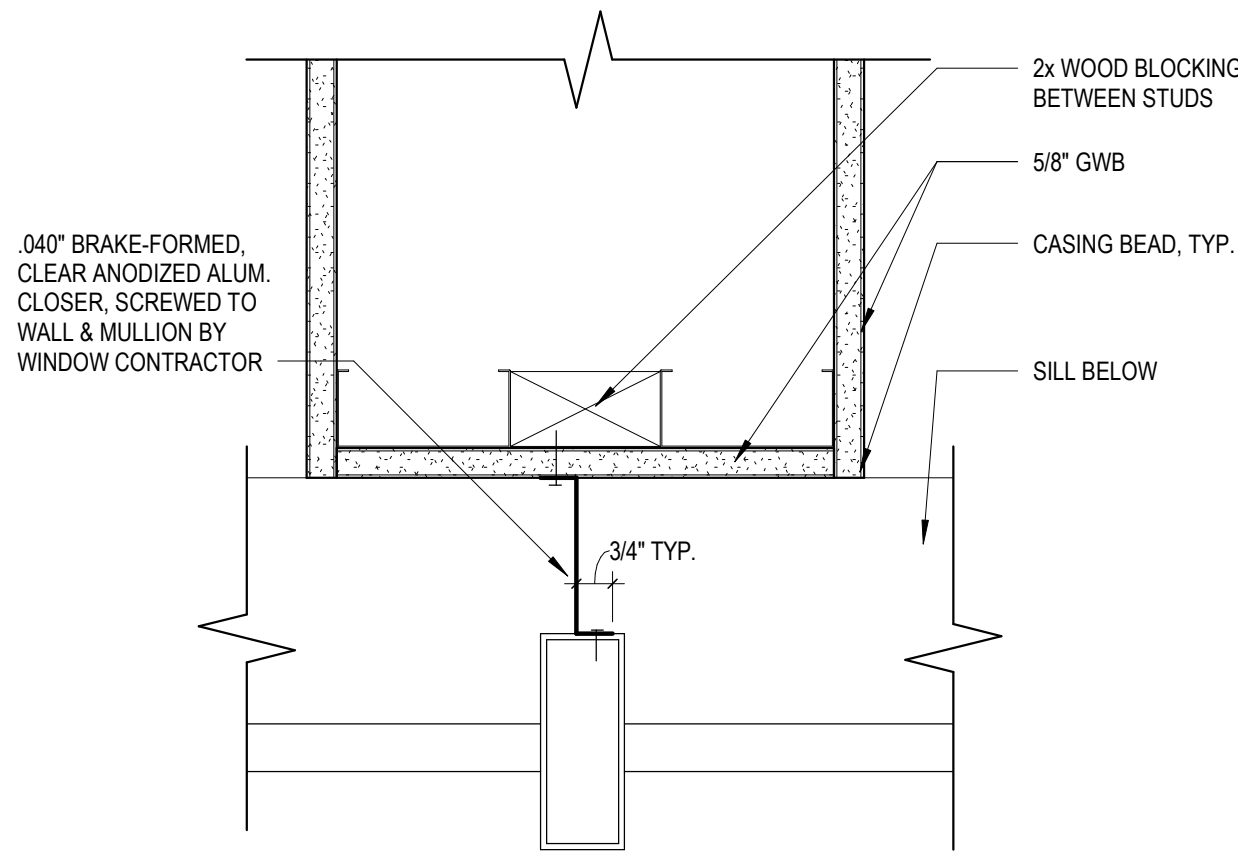
O25006 ColVantage Credit Union  
Kaukauna Branch  
4/25/2025 10:17:10 AM  
C:\Users\GWynveen\Documents\O25006 - ColVantage CU Kaukauna - ARCH\_gwynveen\WUYMU.rn  
CD



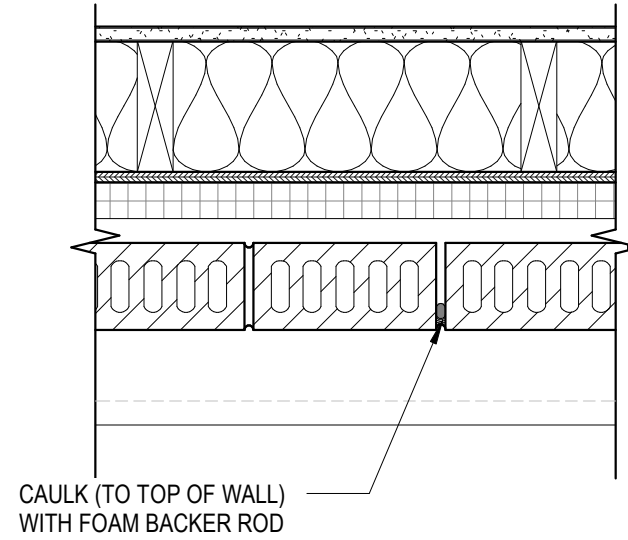




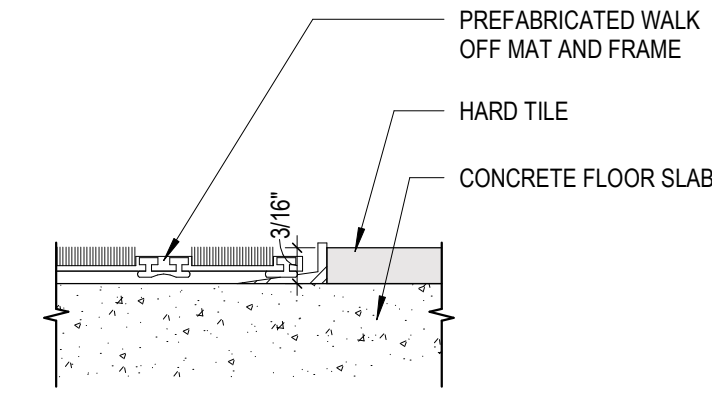
025006 CoVantage Credit Union  
4/25/2025 10:17:12 AM  
C:\Users\Gwynne\Documents\025006 - CoVantage CU Kaukauna - ARCH\_gymneen\WYMU.rvt  
CD



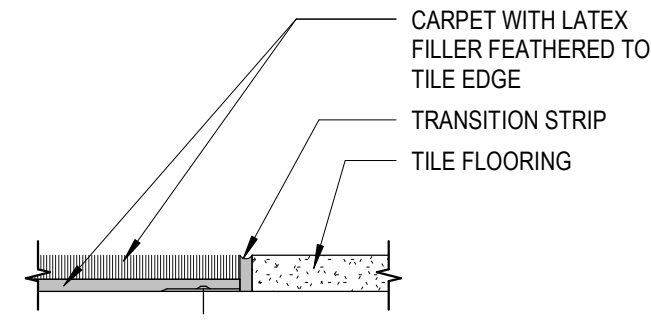
**10** Closer Detail  
3\"/>



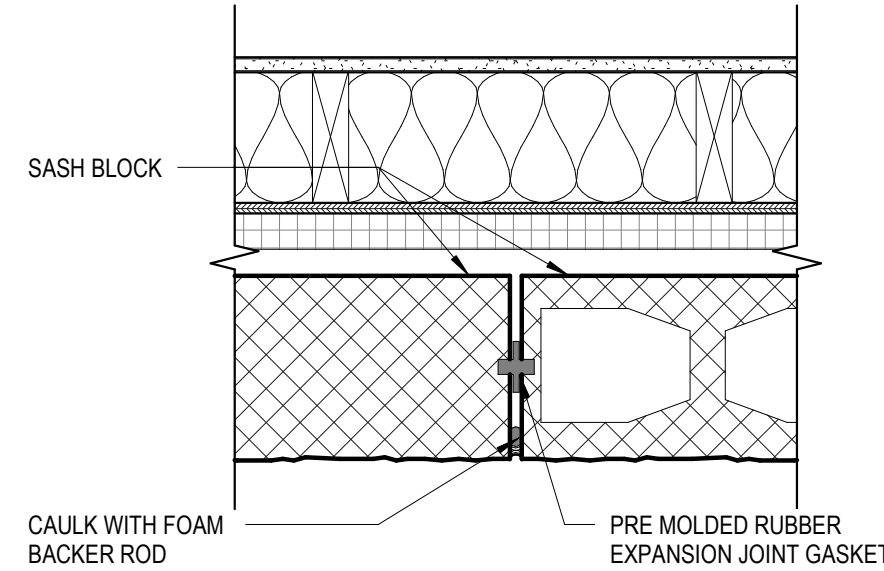
**7** Control Joint Detail at Brick  
1 1/2\"/>



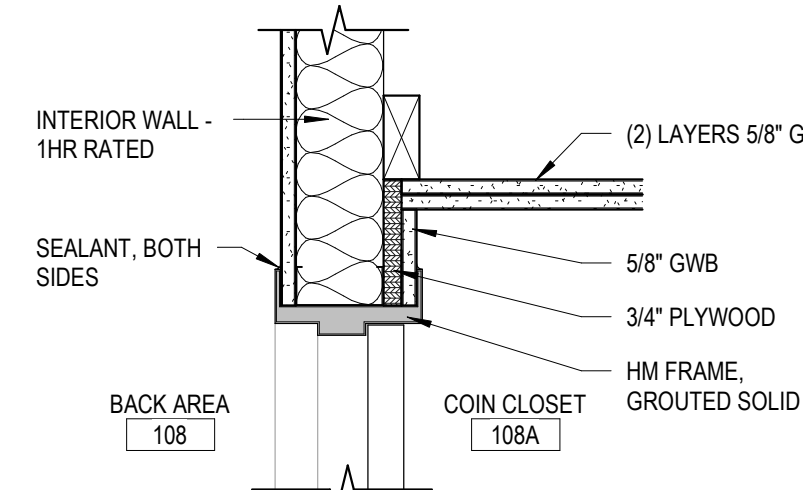
**9** Walk-off Mat Edge Detail  
12\"/>



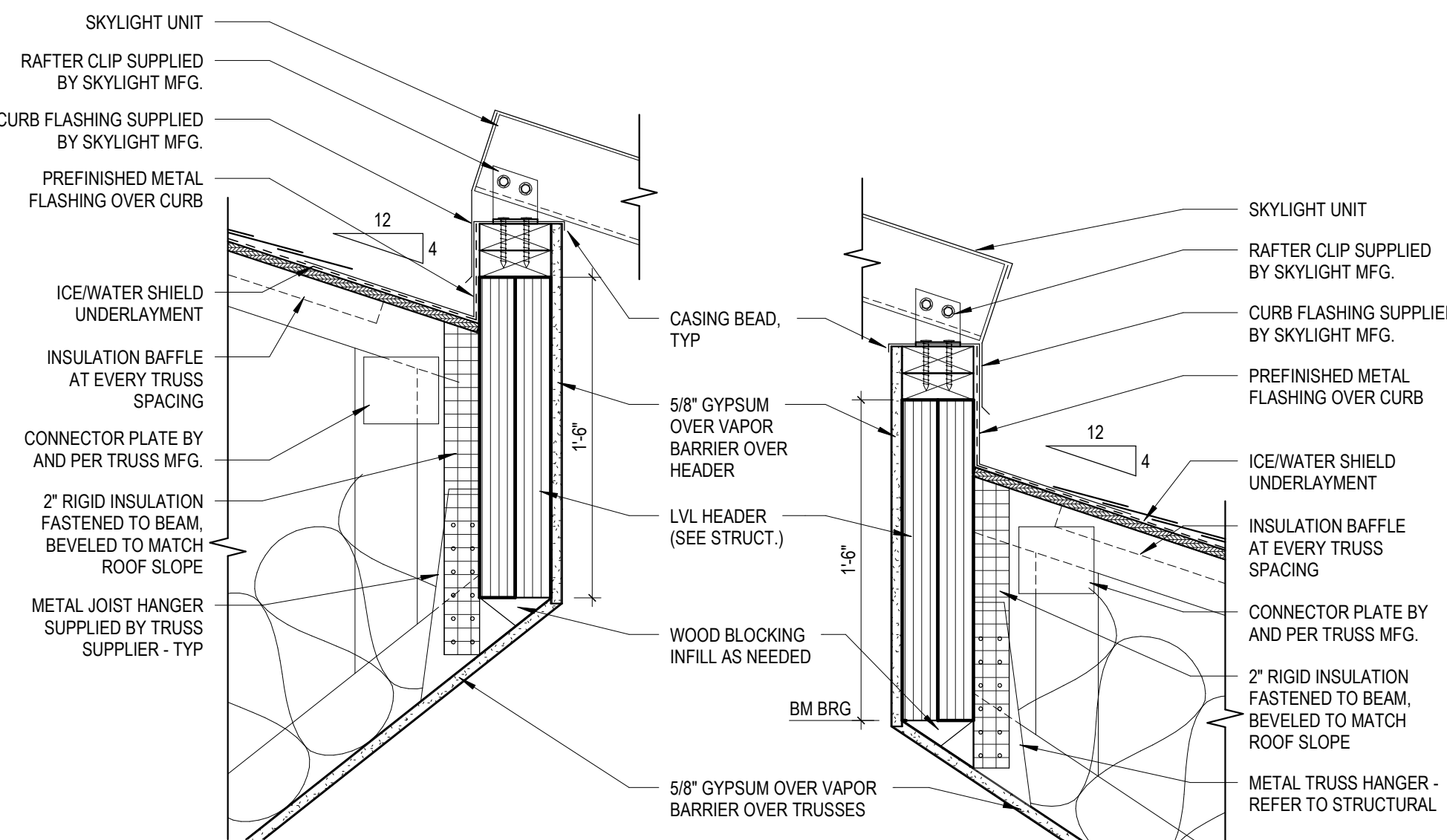
**8** Carpet/Tile Detail  
12\"/>



**6** Control Joint Detail at CMU  
1 1/2\"/>

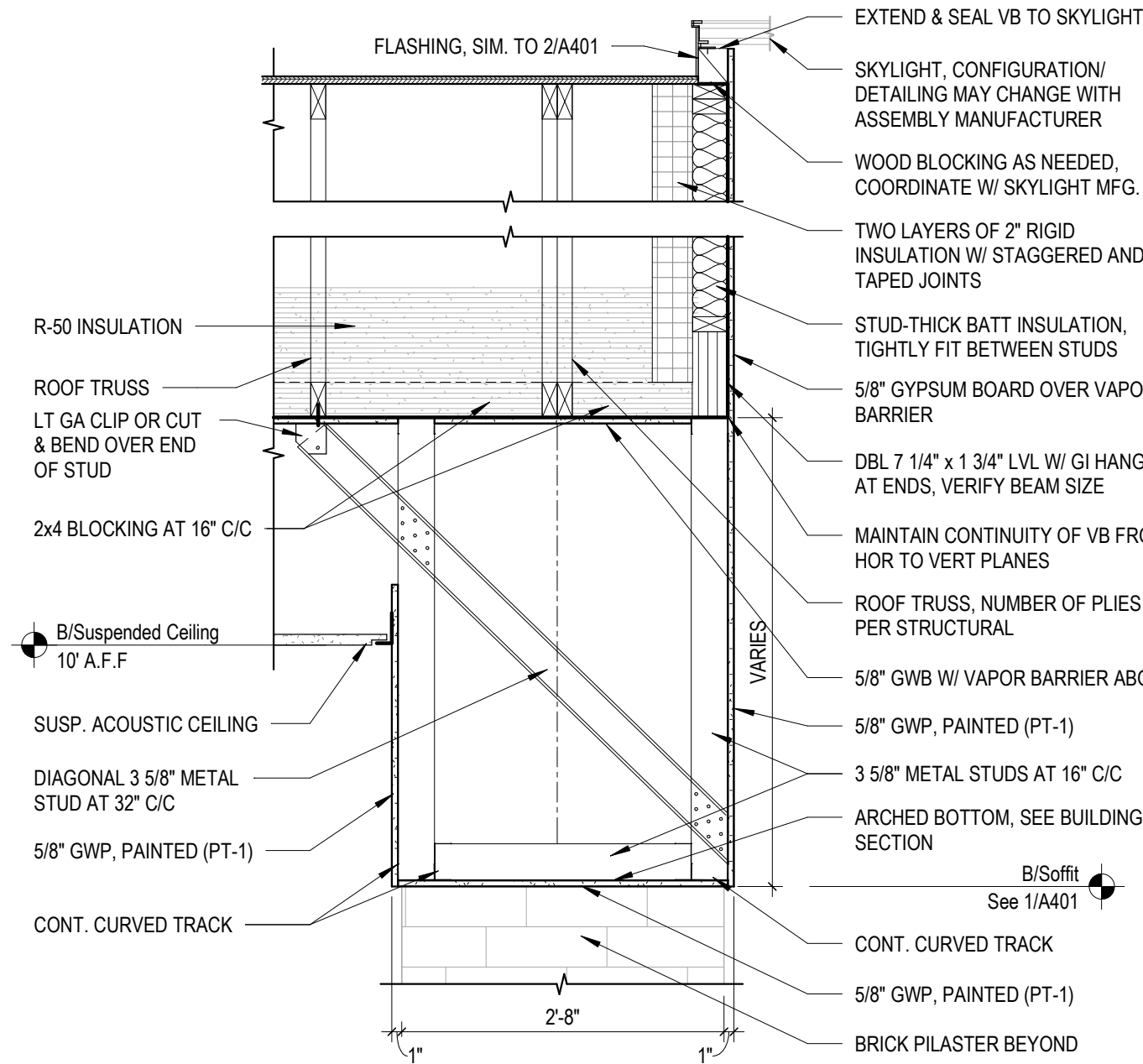


**5** Coin Closet Door Head Detail  
1 1/2\"/>

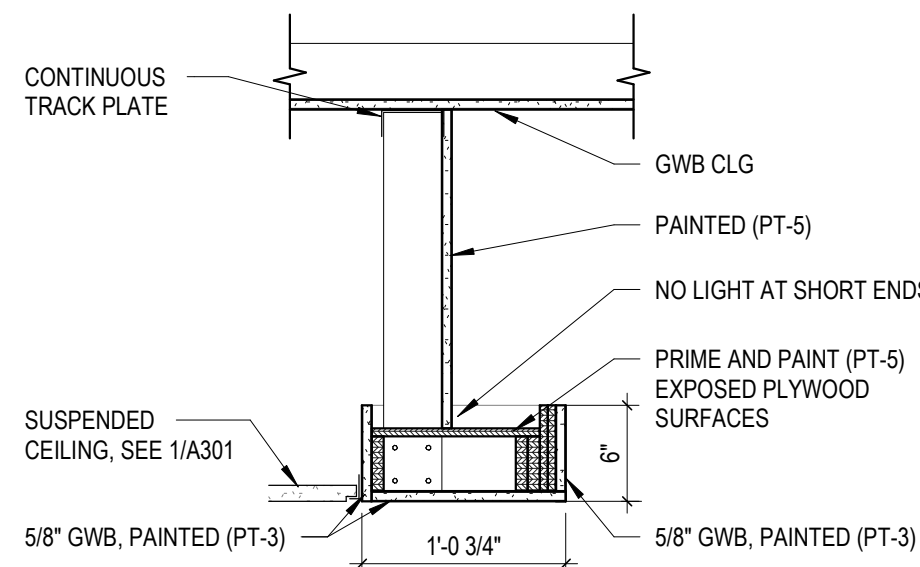


COMPONENTS & DETAILS SHOWN MAY DIFFER FROM THOSE BY SKYLIGHT MFG. GC TO COORDINATE AND ADJUST WHILE MAINTAINING BID DOCUMENTS DESIGN INTENT

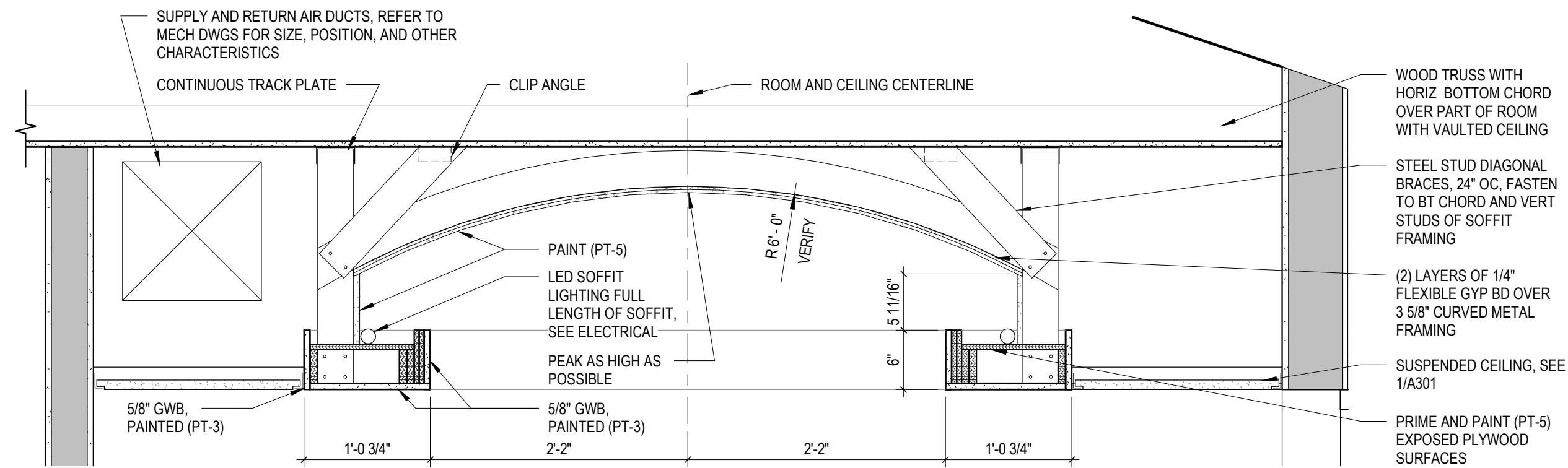
**4** Skylight Unit Flashing Detail  
1 1/2\"/>



**3** Soffit Detail  
3/4\"/>



**2** Conference Room Soffit Detail  
1\"/>



**1** Conference Room Soffit Detail  
1\"/>

New Construction Work for :

CoVantage Credit Union  
Kaukauna Branch

101 E Kelso Rd  
Kaukauna, WI 54130



**MARTIN RILEY**  
architects • engineers

404 N. Main Street, Suite 601  
Oshkosh, WI 54901  
www.martin-riley.com  
pho 920.267.3600

ALL IDEAS, DESIGN, ARRANGEMENTS, NOTICES AND NOTATIONS OR REPRESENTATIONS OF THE DRAWING ARE OWNED BY, AND THE PROPERTY OF, MARTIN RILEY, INC. NO PART SHALL BE REPRODUCED, COPIED, OR TRANSMITTED IN ANY FORM OR BY ANY MEANS, WITHOUT THE WRITTEN PERMISSION OF MARTIN RILEY, INC. MARTIN RILEY, INC. SHALL BE RESPONSIBLE FOR ANY DAMAGE OR CONSEQUENCE IN THE JOB AND THIS OFFICE MUST BE NOTIFIED OF ANY VIOLATION FROM THE INFORMATION AND CONSTRUCTION WORKING BY THESE DRAWINGS. ANY DETAILS SHALL BE SUBMITTED TO THE OFFICE FOR REVIEW FOR THE LIMITED PURPOSE OF CHECKING FOR CONFORMANCE WITH INFORMATION GIVEN AND THE DESIGN CONCEPT EXPRESSED IN THE CONTRACT DOCUMENTS BEFORE PROCEEDING WITH FABRICATION.



DOCUMENT IN PROGRESS  
NOT FOR CONSTRUCTION

REVISION: DATE:

DRAWN BY: GW  
COMMISSION NUMBER: 025006  
REVIEWED BY: NH  
DATE: 2025-04-24

**A501**

DETAILS



FINISH SCHEDULE REMARKS

1. ARCHED SOFFITS (SIDES & BOTTOMS) TO BE PAINTED (PT-1). CURVED WALL SOFFIT TO BE PAINTED (PT-2). SEE SHEET A301 REFLECTED CEILING PLAN FOR DETAILS.  
2. TOP OF CERAMIC TILE BASE TO HAVE SCHLUTER JOLLY TRIM.  
3. ALL SOUTH WALLS TO BE PAINTED (PT-2) EXCEPT DRINKING FOUNTAIN WALLS (3 WALLS) TO BE PAINTED (PT-1).  
4. PAINT CURVED GYP BD CEILING (PT-5) AND SOFFITS (PT-3). SEE SECTION 3/A301 FOR DETAILS.  
5. PROVIDE INTERIOR SIGNAGE (MISC-7) FOR RESTROOMS. REFER TO DETAIL 5/A101 FOR INSTALLATION OF SIGNAGE.  
6. ALIGN THE SIDE WALL TILE JOINTS WITH OPPOSITE SIDE WALL TILE JOINTS IN VESTIBULE 100. CENTER WALL HEATER IN TILE.

FINISH LEGEND

- (A) CEILING
1. USG "MARS" ACOUSTICAL PANELS WITH CLIMAPLUS PERFORMANCE #86985
- a. SIZE: 2' x 2' x 3/4"
- b. EDGE: FLB
- b. SUSPENSION SYSTEM: DONN CENTRICITEE DXT; COLOR: WHITE
2. PAINTED GYPSUM BOARD
- a. COLOR: SHERWIN WILLIAMS SW7004 SNOWBOUND (PNT-5)
- b. FINISH: FLAT
3. USG "SHEETROCK BRAND" LAY-IN CEILING PANEL CLIMAPLUS #3260
- a. SIZE: 2' x 2' x 1/2"
- b. EDGE: SQUARE
- b. SUSPENSION SYSTEM: DONN CENTRICITEE DX/DXL; COLOR: WHITE
- (B) BASE
1. JOHNSONITE 4" THERMOPLASTIC VINYL 1/8" (TYPE TV) COVE BASE
- a. COLOR: STERLING SILVER #69
- b. ADHESIVE: MANUFACTURER RECOMMENDED
2. CEASAR CERAMICS
- a. PATTERN: FOUNDRY 26
- b. COLOR: OXIDE
- c. SIZE: 4" x 12"
- d. TRIM: SCHLUTER-SYSTEMS "JOLLY" AT TOP OF TILE; SATIN ANODIZED ALUMINUM
- e. GROUT COLOR/JOINT: CUSTOM BUILDING PRODUCTS; COLOR: WINTER GRAY #335 WITH 1/8" GROUT JOINT
- (BRK) BRICK
- (CONC) SEALED CONCRETE
- a. STANDARD WATERBORNE, LOW GLOSS CURING AND SEALING COMPOUND
- (CPT) CARPET
1. J&J FLOORING "EVOLVE" CARPET TILE #7981
- a. SIZE: 24" x 24"
- b. COLOR: SURGE #1652
- c. BACKING: NEXUS
- d. INSTALLATION: QUARTER TURN
- e. ADHESIVE: J&J FLOORING "TILETABS"
2. FLOR "TUXEDO POCKET" AREA RUG
- a. SIZE: 19.7' x 19.7'. SEE A8.0
- b. COLORS: MARIGOLD, COLBALT AND BONE/GOLD (SEE DETAIL 4/A601)
- c. NOTE: TAPE SEEMS
- (MISC) MISCELLANEOUS
1. PLASTIC-LAMINATE-FACED CUSTOM CABINETS
- a. DETAILS AND FINISH: SEE ELEVATIONS ON SHEET A602.
- b. SPECIFICATIONS: REFER TO PROJECT MANUAL
2. MDC "DIMENSION WALL" TEXTURED WALL PANEL
- a. PATTERN: LINE THEM UP; DWP3408/4559
- b. COLOR: SILVER
- c. SIZE: 4'x8'
- d. TRIM: SCHLUTER "QUADEC" 5/16" IN SATIN ANODIZED ALUMINUM
- e. NOTE: SEE ELEVATION 1/A603 FOR PANEL LAYOUT AND TRIM LOCATIONS
3. MDC "DIMENSION WALL" TEXTURED WALL PANEL
- a. PATTERN: LINE THEM UP VERTICAL; DWP4308XL
- b. COLOR: SILVER
- c. SIZE: 4'x8'
- d. TRIM: SCHLUTER "QUADEC" 5/16" IN SATIN ANODIZED ALUMINUM
- e. NOTE: SEE ELEVATION 1/A603 FOR PANEL LAYOUT AND TRIM LOCATIONS
- f. INSTALLATION: RAILROAD TO MINIMIZE SEEMS
4. LUMICOR "LUMINOUS" ACRYLIC PANEL
- a. COLOR: 2 LAYERS OF SUNFLOWER & 1 LAYER OF SUNSET
- b. THICKNESS: 1/2"
- c. ADD-ONS: ILLUME
- d. NOTE: ALL EXPOSED EDGES TO BE FINISHED; CANOPY TO HAVE SQUARED EASED EDGES; CABLE SUPPORTS BY ACRYLIC PANEL MANUFACTURER; SEAM PANEL INTERSECTIONS SEE ELEVATIONS AND DETAILS ON SHEETS A602 AND A603 FOR QUANTITY AND LOCATIONS (VERIFY THAT MEETS MANUFACTURER'S RECOMMENDATIONS).
5. MOZ DESIGNS "LASER CUT METAL SHEET"
- a. PATTERN: REEDS
- b. COLOR: "BLEND PATINA COLLECTION" - #162
- c. GRAIN: FOG
- d. FINISH: POLYCOAT MATTE
- e. PANEL SIZE(S): SEE 7/A1A602
6. COAK SHELF
- a.
7. REESE #536 RUBBER HINGE MAT WITH CARPET INSERTS
- a. RAILS: VINYL-ACRYLIC TREAD RAILS 2" WIDE BY 3/8" THICK WITH SLOTTED OR PERFORATED VINYL HINGES
- b. TREAD INSERTS: 114" HIG, 28 OZ/SQ YD WEIGHT, LEVEL-CUT NYLON, FUSION BONDED CARPET
- c. CARPET INSERT COLOR: GREY
- d. VINYL COLOR: BROWN
- e. SERRATED COLOR: CLEAR
- f. SEE DETAIL 2/A601
8. ADA COMPLIANT INTERIOR PANEL SIGNAGE (RESTROOMS)
- a. MANUF/PRODUCT: INPRO CORP "PHOENIX"; 8" x 8" ADA RESTROOM SIGN (NO BACKPLATE)
- b. STYLE: TACTILE AND BRAILLE SIGN COMPLYING WITH ADA-ABA ACCESSIBILITY GUIDELINES AND WITH ICC/ANSI A117.1.
- c. TACTILE CHARACTERS: CHARACTERS AND TEXT SHALL BE ACCOMPANIED BY GRADE 2 BRAILLE RAISED 1/32" ABOVE SURFACE WITH CONTRASTING COLORS
- d. MATERIAL: ACRYLIC
- d. FONT: HELVETICA REGULAR
- e. FACE COLOR: ELIM GRAY 0388
- f. TEXT COLOR: BLACK 29920
- g. INSTALLATION METHOD: FOAM MOUNT
- h. ALL OTHER SIGNAGE BY OWNER.
- (MISC) MISCELLANEOUS CONTINUED
9. FIBERGLASS REINFORCED PLASTIC PANELS
- a. MANUF: CRANE COMPOSITES
- b. STYLE: GLASBORD FRP PANEL
- c. COLOR: NO. 85 WHITE
- d. TRIM:
10. SCHLUTER SYSTEMS ALUMINUM TRIM
- a. QUADEC: 5/16"
- b. JOLLY: 3/8"
- c. DECO-SG: 3/8"
- d. SCHIENE: AE100
- e. FINISH: SATIN ANODIZED ALUMINUM
- (PT) PAINT
1. LOBBY WALLS & SOFFITS
- a. MANUF: SHERWIN WILLIAMS
- b. COLOR: KNITTING NEEDLES SW7672
- c. FINISH: EG-SHEL
2. LOBBY WALLS & CURVED SOFFIT
- a. MANUF: SHERWIN WILLIAMS
- b. COLOR: HONORABLE BLUE SW6811
- c. FINISH: EG-SHEL
3. OFFICE WALLS
- a. MANUF: SHERWIN WILLIAMS
- b. COLOR: PUSSYWILLOW SW7643
- c. FINISH: EG-SHEL
4. DOOR FRAMES & VESTIBULE
- a. MANUF: RUSTOLEUM
- b. COLOR: ALUMI-NON
- c. FINISH: SEMI-GLOSS
- d. NOTE: PROVIDE A MOCK UP AREA OF PAINT ON TEXTURED WALL IN VESTIBULE, TO BE APPROVED BY OWNER BEFORE PROCEEDING
5. CEILING
- a. SHERWIN WILLIAMS
- b. COLOR: SNOWBOUND SW7004
- c. FINISH: FLAT (SEMI-GLOSS IN RESTROOMS)
- (PL) PLASTIC LAMINATE
1. CABINETS & SHELVES
- a. MANUF: NEVAMAR HPL
- b. COLOR: CLEAR MAPLE WM8340-T
- c. FINISH: ARP
2. EMPLOYEE COUNTERTOP & WINDOW SILLS
- a. MANUF: PIONITE HPL
- b. COLOR: COOKIES & CREAM AG130-SM
- c. FINISH: SUPER MATTE
3. TELLER ASSISTANT
- a. MANUF: NEVAMAR
- b. COLOR: SUMMER NIGHT GLOW S-8003-T (THRUCOLOR)
- c. FINISH: ARP
4. TELLER ASSISTANT
- a. MANUF: PIONITE "THRUCOLOR" HPL
- b. COLOR: FORSYNTHIA SY913-SD
- c. FINISH: TEXTURED/SUEDE
5. TELLER ASSISTANT BASE
- a. MANUF: CHEMETAL
- b. FINISHED: BRUSHED ALUMINUM #702
6. VESTIBULE WINDOW SILLS
- a. MANUF: NEVAMAR HPL
- b. COLOR: SILVER DOLLAR AG8000-SD
- c. FINISH: TEXTURED/ SUEDE
- d. SEE SHEET A402 FOR DETAILS
- (T) TILE
1. FLOOR TILE
- a. MANUF: CAESAR CERAMICS
- b. PATTERN: FOUNDRY 26
- c. COLOR: OXIDE
- d. SIZE: 24" x 24" x 9MM THICK; SEE FINISH PLAN FOR TILE LAYOUT
- e. GROUT/JOINT: CUSTOM BLDG PRODUCTS; COLOR: DRIFTWOOD #543 WITH 1/8" GROUT JOINT
- f. TRIM: SCHLUTER-SYSTEMS IN SATIN ANODIZED ALUMINUM
2. WALL TILE AND WINDOW SILLS
- a. MANUF: CASALGRANDE PADANA
- b. PATTERN: METALLICA
- c. COLOR: INOX LAPPATO
- d. SIZE: 23-5/8" x 23-5/8"
- e. GROUT/JOINT: CUSTOM BLDG PRODUCTS; COLOR: PEWTER #19 WITH 1/8" GROUT JOINT
- f. TRIM: SCHLUTER JOLLY AT EXPOSED TILE EDGE AND DECO-SG 1/2" CHANNEL TRIM; ALL IN SATIN ANODIZED ALUMINUM; SEE ELEVATION 7S/A602 FOR DETAILS.
- g. SEE 6/A402 FOR WINDOW SILL DETAIL

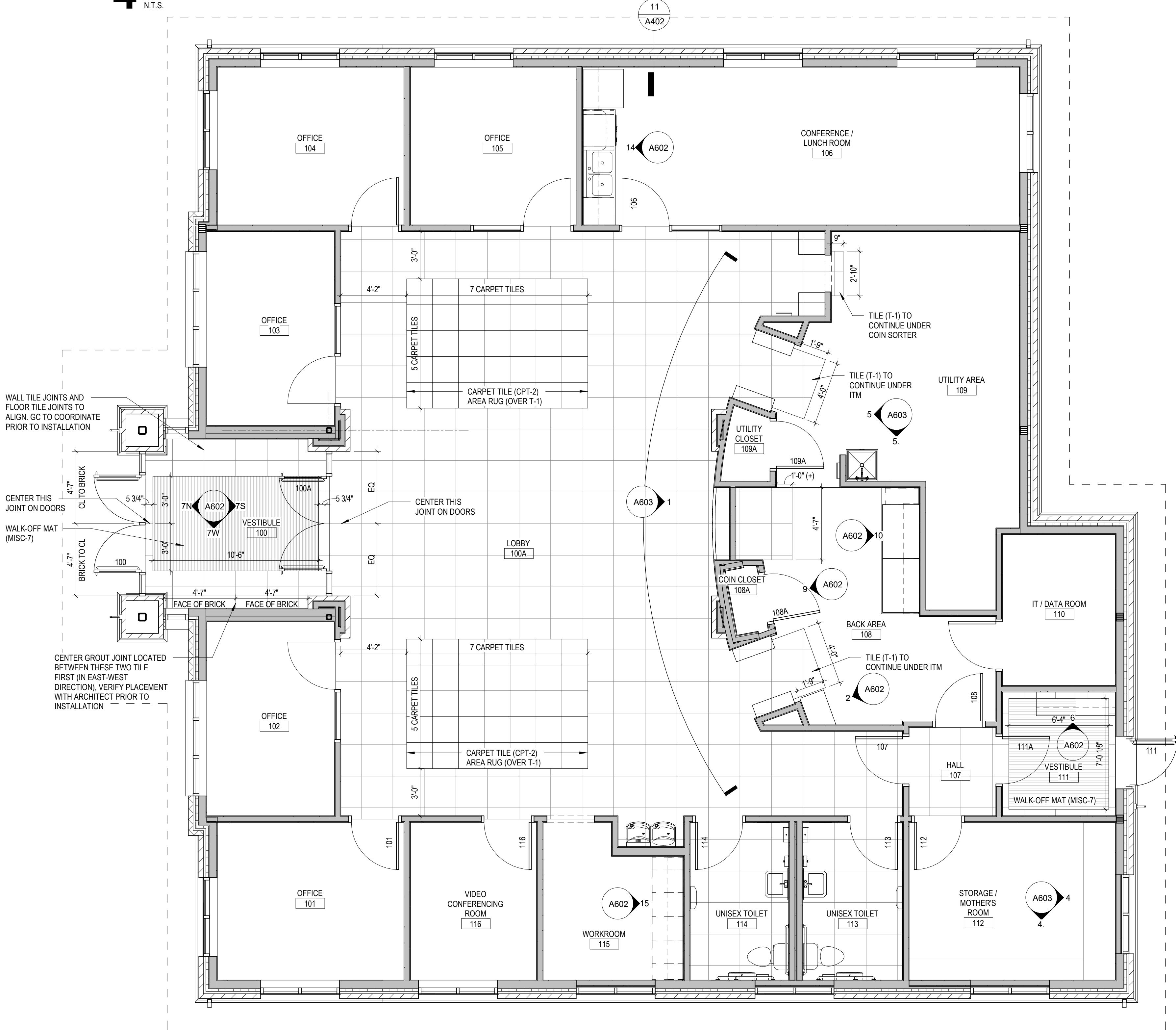
GENERAL NOTES

1. FLOOR COVERING TRANSITIONS SHALL BE CENTERED BELOW DOORS IN THE CLOSED POSITION.
2. FLOORING SHALL EXTEND WALL TO WALL, UNDER EQUIPMENT.
3. SEE FINISH PLANS FOR CERAMIC TILE (T-1) PATTERN DETAILS.
4. NO BASE AT BRICK WALLS.
5. REFER TO PROJECT MANUAL FOR FINISH MATERIALS SPECIFICATIONS.
6. REFER TO REFLECTED CEILING PLAN A301 FOR CHANGES IN CEILING HEIGHTS AND MATERIALS.
7. WALL TILE AND FLOOR TILE JOINTS ARE TO ALIGN. GC TO COORDINATE BEFORE INSTALLATION.



4 Area Rug Design - Lobby 100A

N.T.S.



ROOM FINISH SCHEDULE

Room Number	Room Name	Floor Finish	Base Finish	Wall Finish				Ceiling Finish	Ceiling Height	Remarks
				North	South	East	West			
100	VESTIBULE	T-1/MISC-5	BRK/SEE A602	SEE DETAIL 7N/A602	SEE DETAIL 7S/A602	SEE DETAIL 7E/A602	SEE DETAIL 7W/A602	A-2	SEE A301	1,2,3,6
100A	LOBBY	T-1	B-2	SEE REMARK #3	SEE DETAIL 1/A603	PT-2	PT-2	A-1/A-2	SEE A301	1,2,3
101	OFFICE	CPT-1	B-1	PT-3	PT-3	PT-3	PT-3	A-1	SEE A301	
102	OFFICE	CPT-1	B-1	PT-3	PT-3	PT-3	PT-3	A-1	SEE A301	
103	OFFICE	CPT-1	B-1	PT-3	PT-3	PT-3	PT-3	A-1	SEE A301	
104	OFFICE	CPT-1	B-1	PT-3	PT-3	PT-3	PT-3	A-1	SEE A301	
105	OFFICE	CPT-1	B-1	PT-3	PT-3	PT-3	PT-3	A-1	SEE A301	
106	CONFERENCE / LUNCH ROOM	CPT-1	B-1	PT-3	PT-3	PT-3	PT-3	A-1/A-2	SEE A301	4
107	HALL	T-1	B-2	PT-3	PT-3	PT-3	PT-3	A-1	SEE A301	2
108	BACK AREA	CPT-1	B-1	PT-3	PT-3	PT-3	PT-3	A-2	SEE A301	
108A	COIN CLOSET	CONC-1	B-1	PT-3	PT-3	PT-3	PT-3	A-2	SEE A301	
109	UTILITY AREA	CONC-1	B-1	PT-3	PT-3	PT-3	PT-3	A-2	SEE A301	
109A	UTILITY CLOSET	CONC-1	B-1	PT-3	PT-3	PT-3	PT-3	A-2	SEE A301	
109B	MECHANICAL AREA	CONC-1	B-1	PT-3	PT-3	PT-3	PT-3	A-2	SEE A301	
110	IT / DATA ROOM	CONC-1	B-1	PT-3	PT-3	PT-3	PT-3	A-2	SEE A301	
111	VESTIBULE	T-1/MISC-5	BRK	PT-3	PT-3	PT-3	PT-3	A-1	SEE A301	2
112	STORAGE / MOTHER'S ROOM	CPT-1	B-1	PT-3	PT-3	PT-3	PT-3	A-1	SEE A301	
113	UNISEX TOILET	T-1	B-2	PT-3	PT-3	PT-3	PT-3	A-3	SEE A301	5
114	UNISEX TOILET	T-1	B-2	PT-3	PT-3	PT-3	PT-3	A-3	SEE A301	5
115	WORKROOM	CPT-1	B-1	PT-3	PT-3	PT-3	PT-3	A-1	SEE A301	
116	VIDEO CONFERENCING ROOM	CPT-1	B-1	PT-3	PT-3	PT-3	PT-3	A-1	SEE A301	

New Construction Work for :

CoVantage Credit Union  
Kaukauna Branch

101 E Kelso Rd  
Kaukauna, WI 54130



MARTIN RILEY  
architects + engineers

404 N. Main Street, Suite 601  
Oshkosh, WI 54901

www.martin-riley.com  
pho 920.267.3600

ALL IDEAS, DESIGNS, ARRANGEMENTS AND/OR INDICATED OR REPRESENTED BY THIS DRAWING ARE OWNED BY AND THE PROPERTY OF MARTIN RILEY, INC. AND HAVE BEEN CREATED, DESIGNED AND DEVELOPED BY AND ARE THE SOLE PROPERTY OF MARTIN RILEY, INC. NO PART OF THIS DRAWING OR ANY PART THEREOF MAY BE REPRODUCED OR TRANSMITTED IN ANY FORM OR BY ANY MEANS, ELECTRONIC OR MECHANICAL, INCLUDING PHOTOCOPYING, RECORDING, OR BY ANY INFORMATION STORAGE AND RETRIEVAL SYSTEM, WITHOUT THE WRITTEN PERMISSION OF MARTIN RILEY, INC. MARTIN RILEY, INC. AND ITS EMPLOYEES SHALL BE RESPONSIBLE FOR ALL DIMENSIONS AND CONDITIONS IN THE AS-BUILT AND THIS OFFICE MUST BE NOTIFIED OF ANY VARIATION FROM THE DIMENSIONS AND CONDITIONS SHOWN ON THESE DRAWINGS. ANY SUCH VARIATIONS SHALL BE SUBJECT TO THE REVIEW OF THE LIMITED LIABILITY OF THE DESIGN PROFESSIONAL AND THE DESIGN CONCEPT EXPRESSED IN THE CONTRACT DOCUMENTS BEFORE PROCEEDING WITH FABRICATION.



DOCUMENT IN PROGRESS  
NOT FOR CONSTRUCTION

REVISION: DATE:

DRAWN BY: GW, MEL  
COMMISSION NUMBER: 025006  
REVIEWED BY: NH  
DATE: 2025-04-24

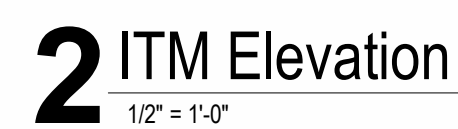
A601

FINISH PLAN/SCHEDULE









## INTERIOR ELEVATIONS AND DETAILS

O25006 CoVantage Credit Union  
Kaukauna Branch  
4/25/2025 10:17:18 AM  
C:\Users\GWynveen\Documents\O25  
CD



