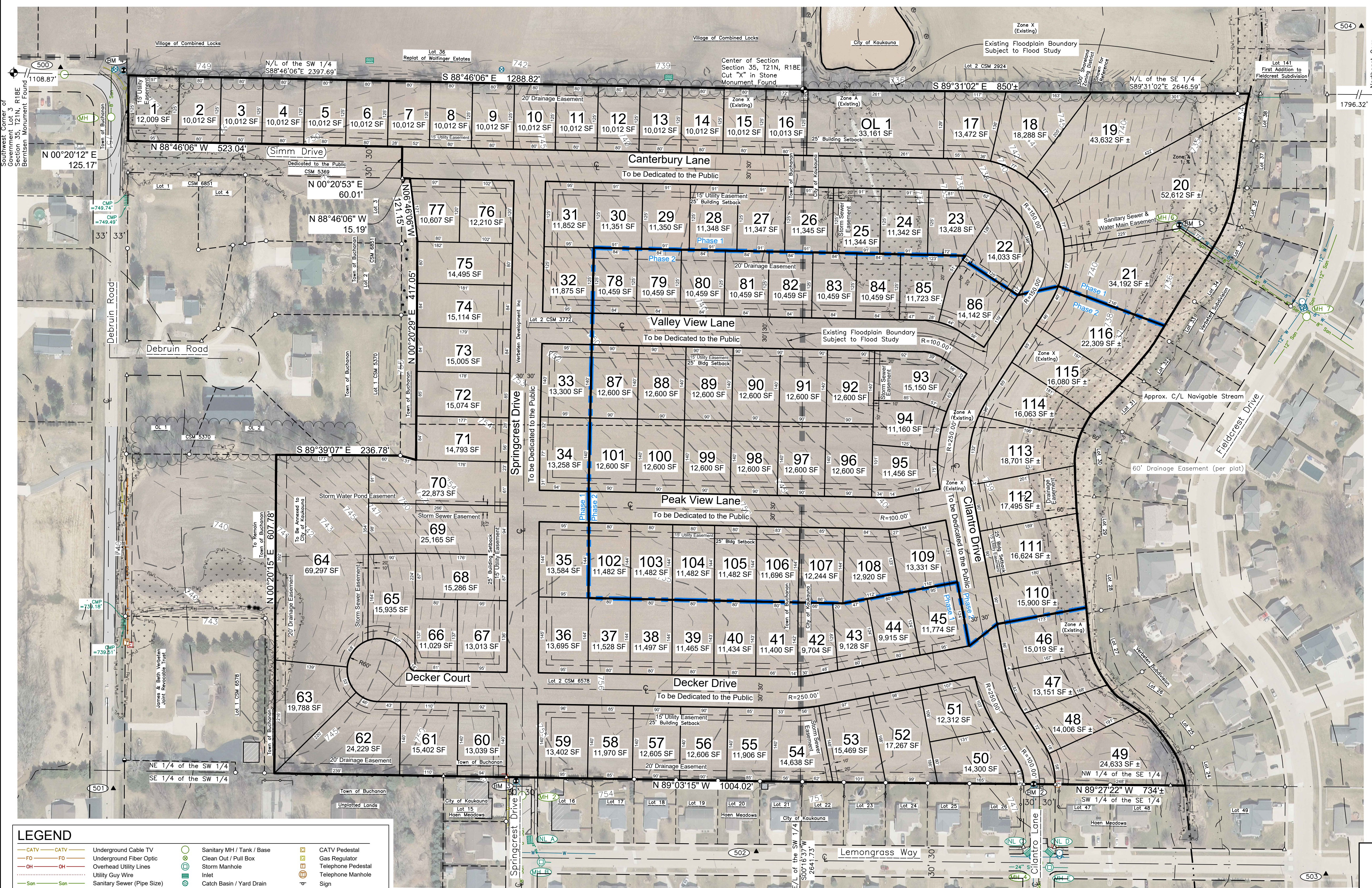
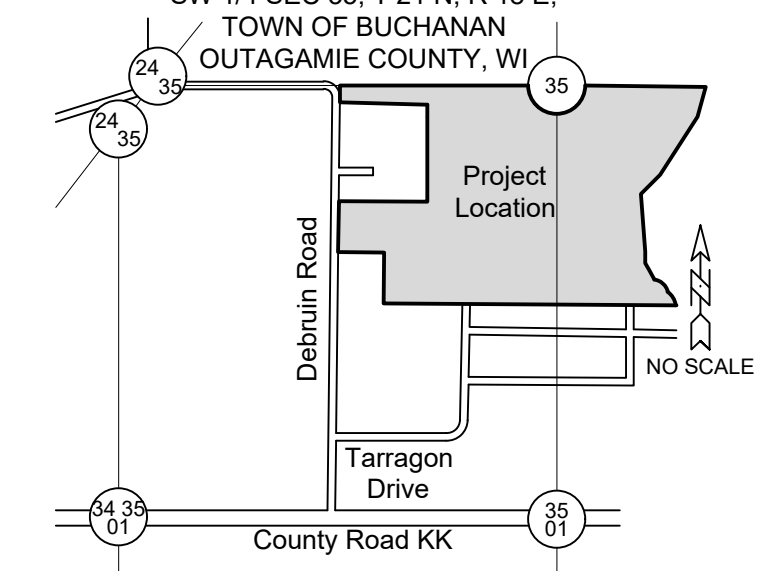


# Preliminary Plat of High Pointe Meadows

## LOCATION MAP



**BENCHMARKS** (Datum NAVD88)

BM 0	NGS Benchmark PID-DE7729, Designation - 4X74 Elev 791.73'
BM 1	Fire Hydrant, Tag Bolt Northeast Corner of Property Elev 736.90'
BM 2	Fire Hydrant, Tag Bolt ±150' N of Cilantro Ln/Lemongrass Way Int. Elev 747.84'
BM 3	Fire Hydrant, Tag Bolt ±150' N of Springcrest Dr/Lemongrass Way Int. Elev 755.22'
BM 4	Fire Hydrant, Tag Bolt Corner of Debruin Rd/Northwest Corner of Property Elev 753.95'

**Storm Structures**

Structure #	Rim	Inv	Size	Material	Direction
INL A	749.34	745.04	12"	PVC	SE
MH B	748.60	743.51	12"	PVC	NW
		743.49	12"	PVC	SW
		743.47	18"	PVC	E
INL C	745.04	741.50	12"	PVC	E
INL D	745.04	741.24	12"	PVC	W
		741.41	12"	PVC	S
MH E	745.44	741.25	12"	PVC	N
		739.64	12"	PVC	E
		739.50	24"	RCP	W
		739.54	30"	RCP	S

**Sanitary Structures**

Structure #	Rim	Inv	Size	Material	Direction
MH 1	751.40	725.54	8"	PVC	N
		725.54	8"	PVC	S
MH 2	751.85	740.46	8"	PVC	S
MH 3	747.20	732.19	8"	PVC	N
		732.19	8"	PVC	S
		732.19	8"	PVC	E
MH 4	745.71	727.09	8"	PVC	N
		727.09	8"	PVC	S
		727.09	8"	PVC	E
		727.09	8"	PVC	W
		733.86	8"	PVC	W
MH 5	746.12	728.30	8"	PVC	N
		728.30	8"	PVC	S
		728.30	8"	PVC	W
MH 6	735.44	717.93	8"	PVC	SE
		716.67	8"	PVC	NW
		716.67	12"	PVC	SW
		716.67	12"	PVC	NE

**Horizontal Control**  
PN9254 - (Town of Buchanan)  
2026-01-19  
Davel Engineering and Environmental  
Horizontal Control (per Outagamie County Coordinate System)

Point Number	Northing	Easting	Description
500	558166.00	858253.75	CPT MAG
501	556789.64	858354.40	CPT MAG
502	556669.44	859581.30	CPT MAG
503	556626.74	860668.25	CPT MAG
504	558245.05	860736.07	CPT MAG

**LEGEND**

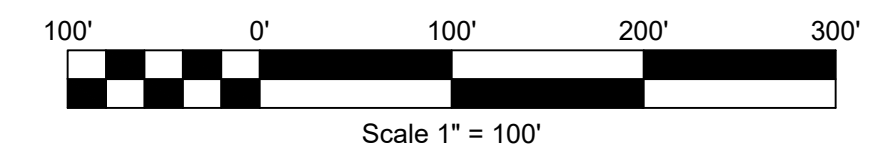
CATV	Underground Cable TV	Sanitary MH / Tank / Base	CATV Pedestal
FO	Underground Fiber Optic	Clean Out / Pull Box	Gas Regulator
OH	Overhead Utility Lines	Storm Manhole	Telephone Pedestal
UW	Utility Guy Wire	Inlet	Telephone Manhole
Son	Sanitary Sewer (Pipe Size)	Water MH / Well	Sign
Sto	Storm Sewer (Pipe Size)	Curb Stop	Post / Guard Post
E	Underground Electric	Hydrant	Deciduous Tree
G	Underground Gas Line	Utility Valve	Coniferous Tree
T	Underground Telephone	Utility Meter	Bush / Hedge
W	Water Main (Pipe Size)	Light Pole / Signal	Benchmark
Fence - Steel	Fence - Wood	Asphalt Pavement	
Fence - Barbed Wire	Trellis	Concrete Pavement	
Gravel	Ex Spot Elevation	Gravel	
Electric Pedestal	Electric Transformer	Electric Manhole	
Electric Manhole			

**SUPPLEMENTARY DATA**  
Total Area = 2,075,514 SF 47.6472 acres  
RW Area = 382,696 SF 8.7855 acres  
Net Area = 1,692,818 SF 38.8618 acres  
Number of Lots = 116  
Average lot size = 14,593 SF  
Typical lot dimension = 80'x 125'  
Lineal feet of street = 6,288 LF

Existing zoning = General Agriculture  
Proposed zoning = RSF  
Approving Authorities  
City of Kaukauna  
Objecting Authorities  
Department of Administration  
Outagamie County

**Phase 1:**  
Total Area = 2,075,514 SF 47.6472 acres  
RW Area = 255,021 SF 5.8545 acres  
Net Area = 1,820,493 SF 41.7258 acres  
Number of Lots = 77 and 2 Outlot  
Lineal feet of street = 4,100 LF

**Phase 2:**  
Total Area = 635,007 SF 14.5778 acres  
RW Area = 127,675 SF 2.9310 acres  
Net Area = 507,332 SF 11.6467 acres  
Number of Lots = 39  
Lineal feet of street = 2,188 LF



**NOTES**  
• Utility and Drainage Easements will be shown on Final Plat

Mar. 30, 2026 - 11:47 AM J:\Projects\9254\9254Plat.dwg Printed by: scott

**DAVEL ENGINEERING & ENVIRONMENTAL, INC.**  
Civil Engineers and Land Surveyors  
1164 Province Terrace, Menasha, WI 54952  
Ph: 920-991-1966  
www.davelpro

**PRELIMINARY PLAT**

**High Pointe Meadows**  
City of Kaukauna, Outagamie County, WI  
For: Tom Dercks

Date: 03/30/2026  
Filename: 9254Plat.dwg  
Author: SRA  
Last Saved by: scott  
Page 1 of 1