

April 6, 2022

Agenda Item: 2f
RW Plat and Relocation Order for Island/Elm Intersection Improvements

Background

A RW Plat and Relocation Order have been created for Island/Elm Intersection Improvements project and both are attached to this background information. These documents start the acquisition process for the necessary easements and right-of-way to install the improvements.

The documents will be recorded in the office of the county Register of Deeds. Provisions are made for the signature(s) of the approving local agency officials. Prior to the recording, the plat must be signed by a representative from the agency authorizing approval of the plat.

Recommended Action

Motion to recommend approval of the RW Plat and Relocation Order for Island/Elm Intersection Improvements to the Common Council and to authorize the Director of Public Works to sign the same on behalf of City of Kaukauna.

RELOCATION ORDER

LPA1708 08/2011 (Replaces LPA3006)

Project 7-22.01 Island/ Elm Intersection Improvements	Road name Island Street City of Kaukauna, Outagamie County, Wisconsin	Highway Island Street	County Outagamie
Right of way plat date 03-16-2022	Plat sheet number(s) 4.02	Previously approved Relocation Order date None	

Description of termini of project: Beginning at a point that is 4802.07 feet North of and 167.63 feet East of Outagamie County Corner 42118221900S being an angle point in the West line of Sections 21, T21N, R18E, City of Kaukauna, Outagamie County Wisconsin; thence Northeasterly to the End of Relocation Order point. Said point being 5343.23 feet north of and 79.23 feet East of Outagamie County Corner 42118221900S being an angle point in the West line of Section 21, T21N, R18E, City of Kaukauna, Outagamie County, Wisconsin, as shown on the plat of right-of-way or a copy thereof marked.

Total net length of centerline is approximately 548.38 feet (0.104 miles).

Outagamie County Coordinate System, NAD 83 (2012):

Beginning Coordinates

Y: 568,164.009

X: 864,186.754

End Coordinates:

Y: 568705.260

X: 864274.875

To properly establish, lay out, widen, enlarge, extend, construct, reconstruct, improve, or maintain a portion of the highway designated above, it is necessary to relocate or change and acquire certain lands or interests in lands as shown on the right of way plat for the above project.

To effect this change, pursuant to authority granted under Sections 62.22 and 62.23(10), Wisconsin Statutes, the City of Kaukauna orders that:

1. The said road is laid out and established to the lines and widths as shown on the plat.
2. The required lands or interests in lands as shown on the plat shall be acquired by: City of Kaukauna
3. This order supersedes and amends any previous order issued by the: City of Kaukauna

Name and Title

Date

R/W PROJECT NUMBER	SHEET NUMBER	TOTAL SHEETS
7-22.01		
CONSTRUCTION PROJECT NUMBER	4.01	2
7-22		
PLAT OF RIGHT OF WAY REQUIRED FOR ISLAND/ELM ST INTERSECTION MAPLE ST - OAK ST		
ISLAND STREET, CITY OF KAUKAUNA		
OUTAGAMIE COUNTY		

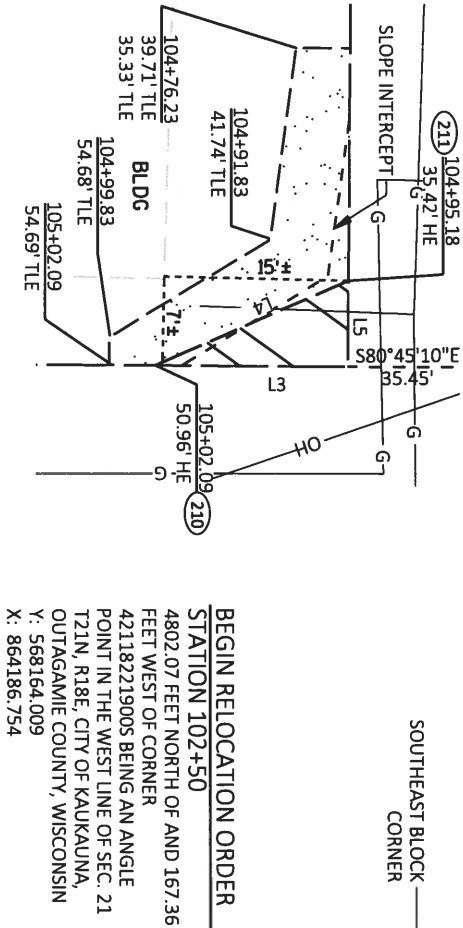
CONVENTIONAL UTILITY SYMBOLS

WATER	—W—	LONG CHORD	LCH
GAS	—G—	LONG CHORD BEARING	LCB
TELEPHONE	—T—	RADIUS	R
OVERHEAD TRANSMISSION LINES	—OH—	DEGREE OF CURVE	D
ELECTRIC	—E—	CENTRAL ANGLE	Δ/DELTA
CABLE TELEVISION	—TV—	LENGTH OF CURVE	L
FIBER OPTIC	—FO—	TANGENT	T
SANITARY SEWER	—SAN—	DIRECTION AHEAD	DA
STORM SEWER	—SS—	DIRECTION BACK	DB
ELECTRIC TOWER	<input checked="" type="checkbox"/>		

CONVENTIONAL SYMBOLS

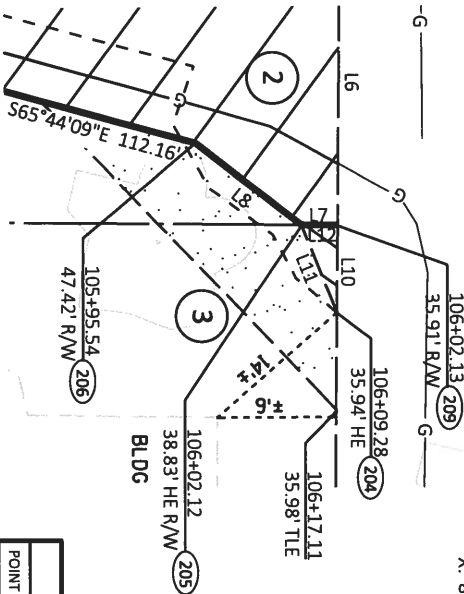
SECTION LINE	---	SECTION CORNER SYMBOL		R/W MONUMENT (TO BE SET)	●
QUARTER LINE	---	NON-MONUMENTED	○	R/W POINT	○
SIXTEENTH LINE	---	SECTION CORNER		FOUND IRON PIN (1 INCH UNLESS NOTED)	IP
NEW R/W LINE	---	MONUMENT			•
EXISTING R/W OR HE LINE	---	GEODETIC SURVEY MONUMENT			
PROPERTY LINE	---	SIXTEENTH CORNER MONUMENT			
LOT, TIE & OTHER MINOR LINES	---	SIGN		OFF-PREMISE SIGN	
SLOPE INTERCEPT	---				
CORPORATE LIMITS	---				
UNDERGROUND FACILITY (COMMUNICATIONS, ELECTRIC, ETC)	---				
NEW R/W (FEE OR HE) (HATCHING VARIES BY OWNER)	---				
TEMPORARY LIMITED EASEMENT AREA	---				
EASEMENT AREA	---				
PERMANENT LIMITED OR RESTRICTED DEVELOPMENT	---				
TRANSMISSION STRUCTURES	---				
BUILDING	---				
BRIDGE	---				
CULVERT	---				
TO BE REMOVED	---				
PARALLEL OFFSETS	---				
UTILITY NUMBER	---				
PARCEL NUMBER	---				
NO ACCESS (NEW HIGHWAY)	---				
ACCESS RESTRICTED (BY PREVIOUS PROJECT OR CONTROL)	---				
NO ACCESS (BY STATUTORY AUTHORITY)	---				
ACCESS RESTRICTED BY ACQUISITION	---				
NO ACCESS (BY STATUTORY AUTHORITY)	---				
ACCESS RESTRICTED (BY PREVIOUS PROJECT OR CONTROL)	---				
NO ACCESS (NEW HIGHWAY)	---				
PARCEL NUMBER	---				
UTILITY NUMBER	---				
PARALLEL OFFSETS	---				
UTILITY NUMBER	---				
PARCEL NUMBER	---				
UTILITY NUMBER	---				
PARALLEL OFFSETS	---				
UTILITY NUMBER	---				
PARCEL NUMBER	---				
UTILITY NUMBER	---				
PARALLEL OFFSETS	---				
UTILITY NUMBER	---				
PARCEL NUMBER	---				
UTILITY NUMBER	---				
PARALLEL OFFSETS	---				
UTILITY NUMBER	---				
PARCEL NUMBER	---				
UTILITY NUMBER	---				
PARALLEL OFFSETS	---				
UTILITY NUMBER	---				
PARCEL NUMBER	---				
UTILITY NUMBER	---				
PARALLEL OFFSETS	---				
UTILITY NUMBER	---				
PARCEL NUMBER	---				
UTILITY NUMBER	---				
PARALLEL OFFSETS	---				
UTILITY NUMBER	---				
PARCEL NUMBER	---				
UTILITY NUMBER	---				
PARALLEL OFFSETS	---				
UTILITY NUMBER	---				
PARCEL NUMBER	---				
UTILITY NUMBER	---				
PARALLEL OFFSETS	---				
UTILITY NUMBER	---				
PARCEL NUMBER	---				
UTILITY NUMBER	---				
PARALLEL OFFSETS	---				
UTILITY NUMBER	---				
PARCEL NUMBER	---				
UTILITY NUMBER	---				
PARALLEL OFFSETS	---				
UTILITY NUMBER	---				
PARCEL NUMBER	---				
UTILITY NUMBER	---				
PARALLEL OFFSETS	---				
UTILITY NUMBER	---				
PARCEL NUMBER	---				
UTILITY NUMBER	---				
PARALLEL OFFSETS	---				
UTILITY NUMBER	---				
PARCEL NUMBER	---				
UTILITY NUMBER	---				
PARALLEL OFFSETS	---				
UTILITY NUMBER	---				
PARCEL NUMBER	---				
UTILITY NUMBER	---				
PARALLEL OFFSETS	---				
UTILITY NUMBER	---				
PARCEL NUMBER	---				
UTILITY NUMBER	---				
PARALLEL OFFSETS	---				
UTILITY NUMBER	---				
PARCEL NUMBER	---				
UTILITY NUMBER	---				
PARALLEL OFFSETS	---				
UTILITY NUMBER	---				
PARCEL NUMBER	---				
UTILITY NUMBER	---				
PARALLEL OFFSETS	---				
UTILITY NUMBER	---				
PARCEL NUMBER	---				
UTILITY NUMBER	---				
PARALLEL OFFSETS	---				
UTILITY NUMBER	---				
PARCEL NUMBER	---				
UTILITY NUMBER	---				
PARALLEL OFFSETS	---				
UTILITY NUMBER	---				
PARCEL NUMBER	---				
UTILITY NUMBER	---				
PARALLEL OFFSETS	---				
UTILITY NUMBER	---				
PARCEL NUMBER	---				
UTILITY NUMBER	---				
PARALLEL OFFSETS	---				
UTILITY NUMBER	---				
PARCEL NUMBER	---				
UTILITY NUMBER	---				
PARALLEL OFFSETS	---				
UTILITY NUMBER	---				
PARCEL NUMBER	---				
UTILITY NUMBER	---				
PARALLEL OFFSETS	---				
UTILITY NUMBER	---				
PARCEL NUMBER	---				
UTILITY NUMBER	---				
PARALLEL OFFSETS	---				
UTILITY NUMBER	---				
PARCEL NUMBER	---				
UTILITY NUMBER	---				
PARALLEL OFFSETS	---				
UTILITY NUMBER	---				
PARCEL NUMBER	---				
UTILITY NUMBER	---				
PARALLEL OFFSETS	---				
UTILITY NUMBER	---				
PARCEL NUMBER	---				
UTILITY NUMBER	---				
PARALLEL OFFSETS	---				
UTILITY NUMBER	---				
PARCEL NUMBER	---				
UTILITY NUMBER	---				
PARALLEL OFFSETS	---				
UTILITY NUMBER	---				
PARCEL NUMBER	---				
UTILITY NUMBER	---				
PARALLEL OFFSETS	---				
UTILITY NUMBER	---				
PARCEL NUMBER	---				
UTILITY NUMBER	---				
PARALLEL OFFSETS	---				
UTILITY NUMBER	---				
PARCEL NUMBER	---				
UTILITY NUMBER	---				
PARALLEL OFFSETS	---				
UTILITY NUMBER	---				
PARCEL NUMBER	---				
UTILITY NUMBER	---				
PARALLEL OFFSETS	---				
UTILITY NUMBER	---				
PARCEL NUMBER	---				
UTILITY NUMBER	---				
PARALLEL OFFSETS	---				
UTILITY NUMBER	---				
PARCEL NUMBER	---				
UTILITY NUMBER	---				
PARALLEL OFFSETS	---				
UTILITY NUMBER	---				
PARCEL NUMBER	---				
UTILITY NUMBER	---				
PARALLEL OFFSETS	---				
UTILITY NUMBER	---				
PARCEL NUMBER	---				
UTILITY NUMBER	---				
PARALLEL OFFSETS	---				
UTILITY NUMBER	---				
PARCEL NUMBER	---				
UTILITY NUMBER	---				
PARALLEL OFFSETS	---				
UTILITY NUMBER	---				
PARCEL NUMBER	---				
UTILITY NUMBER	---				
PARALLEL OFFSETS	---				
UTILITY NUMBER	---				
PARCEL NUMBER	---				
UTILITY NUMBER	---				
PARALLEL OFFSETS	---				
UTILITY NUMBER	---				
PARCEL NUMBER	---				
UTILITY NUMBER	---				
PARALLEL OFFSETS	---				
UTILITY NUMBER	---				
PARCEL NUMBER	---				
UTILITY NUMBER	---				
PARALLEL OFFSETS	---				
UTILITY NUMBER	---				
PARCEL NUMBER	---				
UTILITY NUMBER	---				
PARALLEL OFFSETS	---				
UTILITY NUMBER	---				
PARCEL NUMBER	---				
UTILITY NUMBER	---				
PARALLEL OFFSETS	---				
UTILITY NUMBER	---				
PARCEL NUMBER	---				
UTILITY NUMBER	---				
PARALLEL OFFSETS	---				
UTILITY NUMBER	---				
PARCEL NUMBER	---				
UTILITY NUMBER	---				
PARALLEL OFFSETS	---				
UTILITY NUMBER	---				
PARCEL NUMBER	---				
UTILITY NUMBER	---				
PARALLEL OFFSETS	---				
UTILITY NUMBER	---				
PARCEL NUMBER	---				
UTILITY NUMBER	---				
PARALLEL OFFSETS	---				
UTILITY NUMBER	---				
PARCEL NUMBER	---				
UTILITY NUMBER	---				
PARALLEL OFFSETS	---				
UTILITY NUMBER	---				
PARCEL NUMBER	---				
UTILITY NUMBER	---				
PARALLEL OFFSETS	---				
UTILITY NUMBER	---				
PARCEL NUMBER	---				
UTILITY NUMBER	---				
PARALLEL OFFSETS	---				
UTILITY NUMBER	---				
PARCEL NUMBER	---				
UTILITY NUMBER	---				
PARALLEL OFFSETS	---				
UTILITY NUMBER	---				
PARCEL NUMBER	---				
UTILITY NUMBER	---				
PARALLEL OFFSETS	---				
UTILITY NUMBER	---				
PARCEL NUMBER	---				
UTILITY NUMBER	---				
PARALLEL OFFSETS	---				
UTILITY NUMBER	---				
PARCEL NUMBER	---				
UTILITY NUMBER	---				
PARALLEL OFFSETS	---				
UTILITY NUMBER	---				
PARCEL NUMBER	---				
UTILITY NUMBER	---				
PARALLEL OFFSETS	---				
UTILITY NUMBER	---				
PARCEL NUMBER	---				
UTILITY NUMBER	---				
PARALLEL OFFSETS	---				
UTILITY NUMBER	---				
PARCEL NUMBER	---				
UTILITY NUMBER	---				
PARALLEL OFFSETS	---				
UTILITY NUMBER	---				
PARCEL NUMBER	---				
UTILITY NUMBER	---				
PARALLEL OFFSETS	---				
UTILITY NUMBER	---				
PARCEL NUMBER	---				
UTILITY NUMBER	---				
PARALLEL OFFSETS	---				
UTILITY NUMBER	---				
PARCEL NUMBER	---				
UTILITY NUMBER	---				
PARALLEL OFFSETS	---				
UTILITY NUMBER	---				
PARCEL NUMBER	---				
UTILITY NUMBER	---				
PARALLEL OFFSETS	---				
UTILITY NUMBER	---				
PARCEL NUMBER	---				
UTILITY NUMBER	---				
PARALLEL OFFSETS	---				
UTILITY NUMBER	---				
PARCEL NUMBER	---				
UTILITY NUMBER	---				
PARALLEL OFFSETS	---				
UTILITY NUMBER	---				
PARCEL NUMBER	---				
UTILITY NUMBER	---				
PARALLEL OFFSETS	---				
UTILITY NUMBER	---				
PARCEL NUMBER	---				
UTILITY NUMBER	---				
PARALLEL OFFSETS	---				
UTILITY NUMBER	---				
PARCEL NUMBER	---				
UTILITY NUMBER	---				
PARALLEL OFFSETS	---				
UTILITY NUMBER	---				
PARCEL NUMBER	---				
UTILITY NUMBER	---				
PARALLEL OFFSETS	---				
UTILITY NUMBER	---				
PARCEL NUMBER	---				
UTILITY NUMBER	---				
PARALLEL OFFSETS	---				
UTILITY NUMBER	---				
PARCEL NUMBER	---				
UTILITY NUMBER	---				
PARALLEL OFFSETS	---				
UTILITY NUMBER	---				
PARCEL NUMBER	---				
UTILITY NUMBER	---				
PARALLEL OFFSETS	---				
UTILITY NUMBER	---				
PARCEL NUMBER	---				
UTILITY NUMBER	---				
PARALLEL OFFSETS	---				
UTILITY NUMBER	---				
PARCEL NUMBER	---				
UTILITY NUMBER	---				
PARALLEL OFFSETS	---				
UTILITY NUMBER	---				
PARCEL NUMBER	---				
UTILITY NUMBER	---				
PARALLEL OFFSETS	---				
UTILITY NUMBER	---				
PARCEL NUMBER	---				
UTILITY NUMBER	---				
PARALLEL OFFSETS	---				
UTILITY NUMBER	---				
PARCEL NUMBER	---				
UTILITY NUMBER	---				
PARALLEL OFFSETS	---				
UTILITY NUMBER	---				
PARCEL NUMBER	---				
UTILITY NUMBER	---				
PARALLEL OFFSETS	---				
UTILITY NUMBER	---				
PARCEL NUMBER	---				
UTILITY NUMBER	---				
PARALLEL OFFSETS	---				
UTILITY NUMBER	---				
PARCEL NUMBER	---				
UTILITY NUMBER	---				
PARALLEL OFFSETS	---				
UTILITY NUMBER	---				
PARCEL NUMBER	---				
UTILITY NUMBER	---				
PARALLEL OFFSETS	---				
UTILITY NUMBER	---				
PARCEL NUMBER	---				
UTILITY NUMBER	---				
PARALLEL OFFSETS	---				
UTILITY NUMBER	---				
PARCEL NUMBER	---				
UTILITY NUMBER	---				
PARALLEL OFFSETS	---				
UTILITY NUMBER	---				
PARCEL NUMBER	---				
UTILITY NUMBER	---				
PARALLEL OFFSETS	---				
UTILITY NUMBER	---				
PARCEL NUMBER	---		</		

DETAIL A



SW CORNER SEC 21, T21N R18E
CORNER ID 421182219005
STONE WITH CROSS
Y: 559172.28
X: 864319.35

DETAIL B

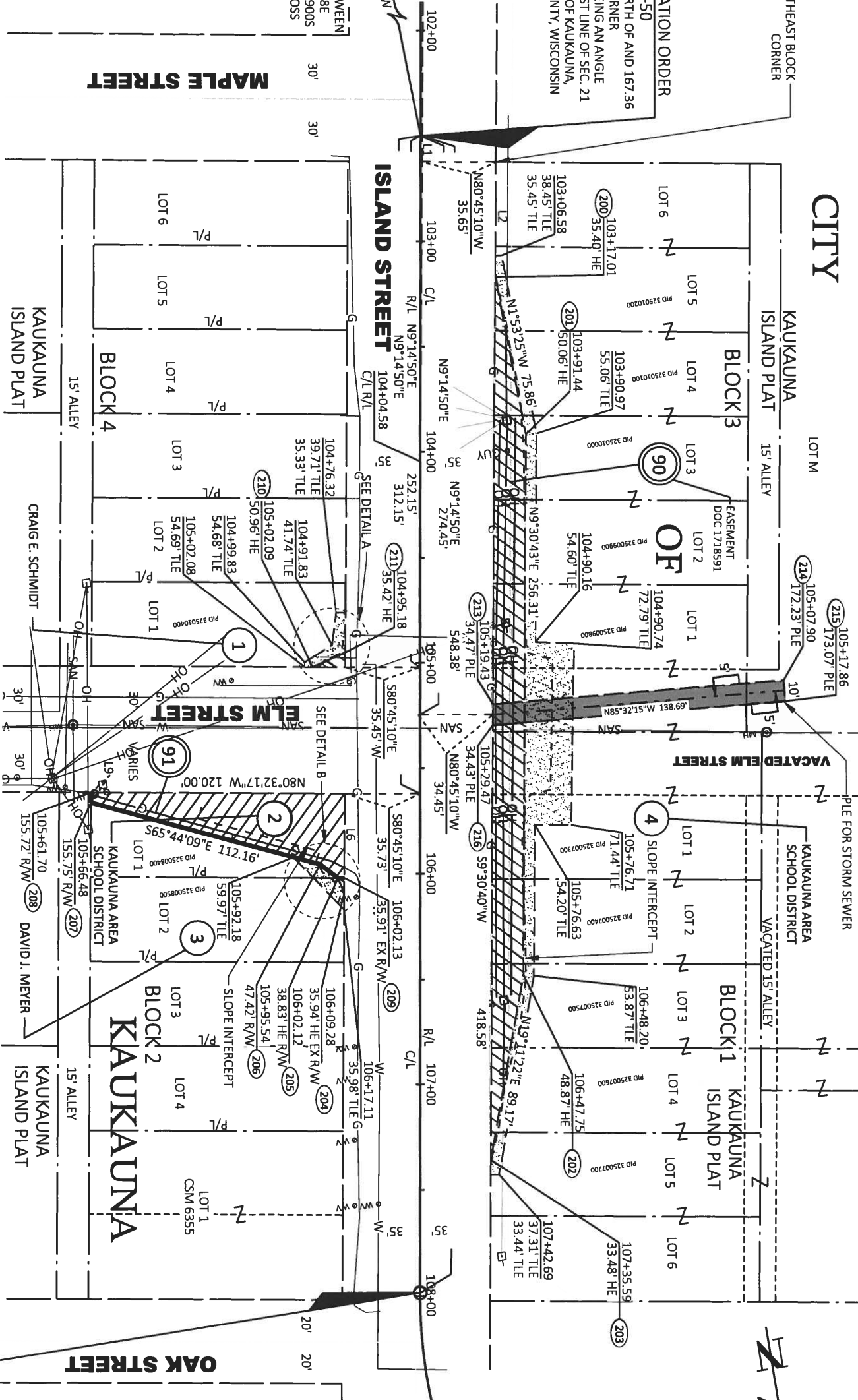


CORNER ON LINE BETWEEN
SEC 21 & 22, T21N R18E
CORNER ID 421182219005
LIME STONE WITH CROSS
Y: 563361.94
X: 864354.11

BEGIN RELOCATION ORDER

STATION 102+50
4802.07 FEET NORTH OF AND 167.36
FEET WEST OF CORNER
421182219005 BEING AN ANGLE
POINT IN THE WEST LINE OF SEC. 21
T21N, R18E, CITY OF KAUKAUNA,
OUTAGAMIE COUNTY, WISCONSIN
Y: 568164.009
X: 864186.754

CITY



MAPLE STREET

LINE TABLE

LINE	DIRECTION	LENGTH
L1	N09°14'50"E	12.42'
L2	N09°30'40"E	54.60'
L3	S80°32'17"W	15.51'
L4	S75°16'18"W	17.01'
L5	N09°30'40"E	6.97'
L6	N09°30'40"E	39.98'
L7	S80°32'17"W	2.93'
L8	S43°18'31"E	10.81'
L9	S09°30'40"W	4.78'
L10	N09°30'40"E	7.16'
L11	S12°42'23"E	7.73'
L12	N80°32'17"W	2.93'

POINT TABLE

POINT NAME	Y	X
200	568235.842	864162.579
201	568311.660	864160.077
202	568564.448	864202.434
203	568648.666	864231.744
204	568512.849	864279.965
205	568505.309	864281.667
206	568497.440	864289.085
207	568451.349	864391.334
208	568446.637	864390.544
209	568505.790	864278.782
210	568404.639	864277.561
211	568400.315	864261.111

POINT TABLE

POINT NAME	Y	X
213	568435.476	864196.026
214	568446.231	864058.202
215	568456.201	864058.980
216	568445.377	864197.685

UTILITY SCHEDULE OF INTEREST REQUIRED

UTILITY NO.	UTILITY OWNERS	INTEREST REQUIRED
90	KAUKAUNA UTILITIES	RELEASE OF RIGHTS
91	WE ENERGY GAS	RELEASE OF RIGHTS

SCHEDULE OF LANDS AND INTEREST REQUIRED

PARCEL NO.	OWNER	INTEREST REQUIRED	NEW	EXISTING	TOTAL	HE AREA	P/E AREA	T/E AREA
1	CRAIG E. SCHMIDT	HE T/E	---	---	---	54 SQ FT	---	175 SQ FT
2	CITY OF KAUKAUNA	FEE T/E	2614 SQ FT	---	2614 SQ FT	---	---	84 SQ FT
3	DAVID J. MEYER	HE T/E	---	---	---	10.5 SQ FT	---	98 SQ FT
4	KAUKAUNA AREA SCHOOL DISTRICT	HE P/E T/E	---	---	---	5060 SQ FT	1387 SQ FT	3709 SQ FT

OWNER NAMES ARE SHOWN FOR REFERENCE PURPOSES ONLY
AND ARE SUBJECT TO CHANGE PRIOR TO TRANSFER OF LAND
INTERESTS TO THE DEPARTMENT.

TILE NOTE: ALL TEMPORARY LIMITED EASEMENTS
ON THIS RIGHT OF WAY PLAT ARE FOR SLOPING
AND CONSTRUCTION PURPOSES

END RELOCATION ORDER

STATION 107+98.38
5343.23 FEET NORTH OF AND 79.23 FEET WEST
OF CORNER 421182219005 BEING AN ANGLE
POINT IN THE WEST LINE OF SEC. 21 T21N,
R18E, CITY OF KAUKAUNA, OUTAGAMIE
COUNTY, WISCONSIN
Y: 568705.260
X: 864274.875

REVISION DATE

DATE 3-16-2022

SCALE, FEET

GRID FACTOR

HWY: ISLAND/ELM ST INTERSECTION

R/W PROJECT NUMBER

7-22.01

PLAT SHEET 4.02

COUNTY: OUTAGAMIE

CONSTRUCTION PROJECT NUMBER

7-22

PS&E SHEET

E