

MEMO



GRIGNON MANSION

To: Common Council
From: Cassidy Mickelson, Grignon Mansion Executive Director
Date: September 6, 2022
Re: Continuation of Memorandum of Understanding between Grignon Mansion Executive Director and Lawrence University

Background: As a continuation of the partnership established between the City of Kaukauna and Lawrence University, renewing the long-term Memorandum of Understanding between the organizations will allow for flexibility in projects that will benefit the City of Kaukauna, the Grignon Mansion, and Lawrence University students.

This fall, Dr. Peter Peregrine would like to return to the grounds of the Grignon Mansion to continue archaeological research. His class will work Tuesdays and Thursdays starting September 20th on the Grignon Mansion grounds and in Lower Grignon Park. The Grignon Mansion Board has approved the project and the continued partnership with Lawrence University.

1. Oneota Village (see figure 1): The first project is to continue researching the zone west of the blacksmith shop where the Oneota longhouses might be. Peregrine would have students go over the area with ground penetrating radar (GPR) and do another soil resistivity survey.
2. Ducharme cabin/Old French Village remnants (see figure 2): The second project is a small excavation of approximately 2 meters by 6 meters up in the woods to the north of the Mansion in Lower Grignon Park. This would allow Dr. Peregrine and students to do a more formal check to see where the old Grignon cabin is located and excavate a trench across where Wolf said the original DuCharme cabin was located (see figure 3).

Recommended Action: Authorize Grignon Mansion Executive Director to enter into Memorandum of Understanding with Lawrence University.

Figure 1: Interpretation of potential Oneota longhouses based on posthole patterns



Figure 2: General area of excavation based on excavations done in 1999.

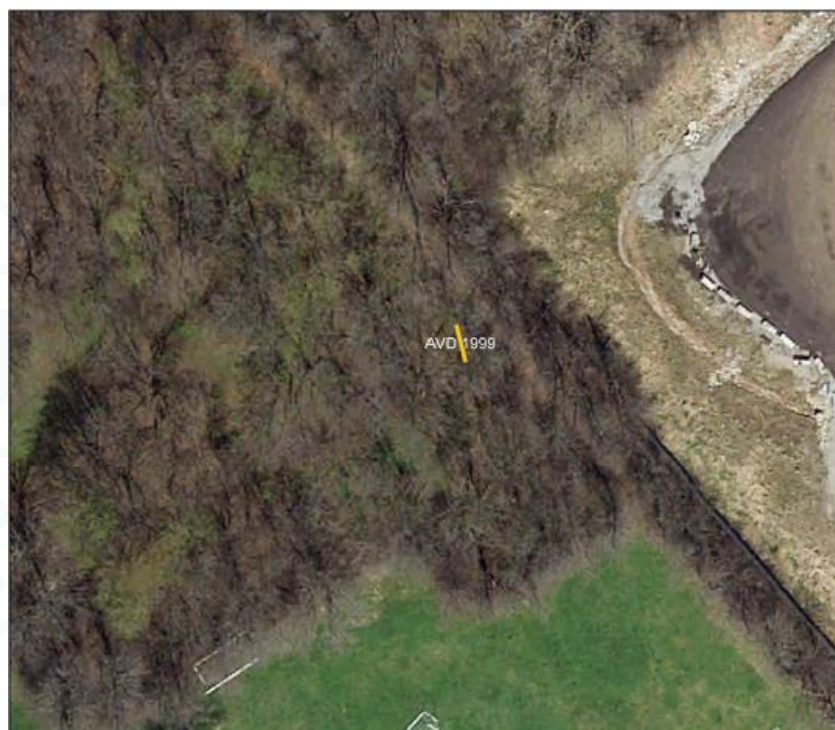


Figure 3: Location of historic structures in the “Old French Village” relative to the Grignon Mansion and Wolf’s identification of their historic uses.

