

Kaukauna Public Library

“Job Pod Program”

In Partnership With Brown County
Library & Nicolet Federated Library

Framery Four Accessible Proposal

04.16.26





Agenda

- 01.** Kaukauna Public Library &
(Brown County Library Job Pod Program)
- 02.** Creative Overview
- 03.** Framery Four Accessible
- 04.** Proposal
- 05.** Q & A
- 06.** Next Steps

KAUKAUNA PUBLIC LIBRARY & (BROWN COUNTY LIBRARY JOB POD PROGRAM)



Job and Employment Resources

Welcome to the Kaukauna Public Library Job and Employment Resources page! Please click one of the following topics to find your desired resource.
We also offer one-on-one assistance for all of these topics! Call the library at 920-766-6340 to set up a time to meet with a library staff member.

 FIND A JOB	 CAREERS
 RESUMES, COVER PAGES, & INTERVIEW SKILLS	 UNEMPLOYMENT & DISABILITY BENEFITS



<https://jobpodwi.org/participatinglibraries>

Danielle Zeamer
JobPod Project Librarian
Brown County Library

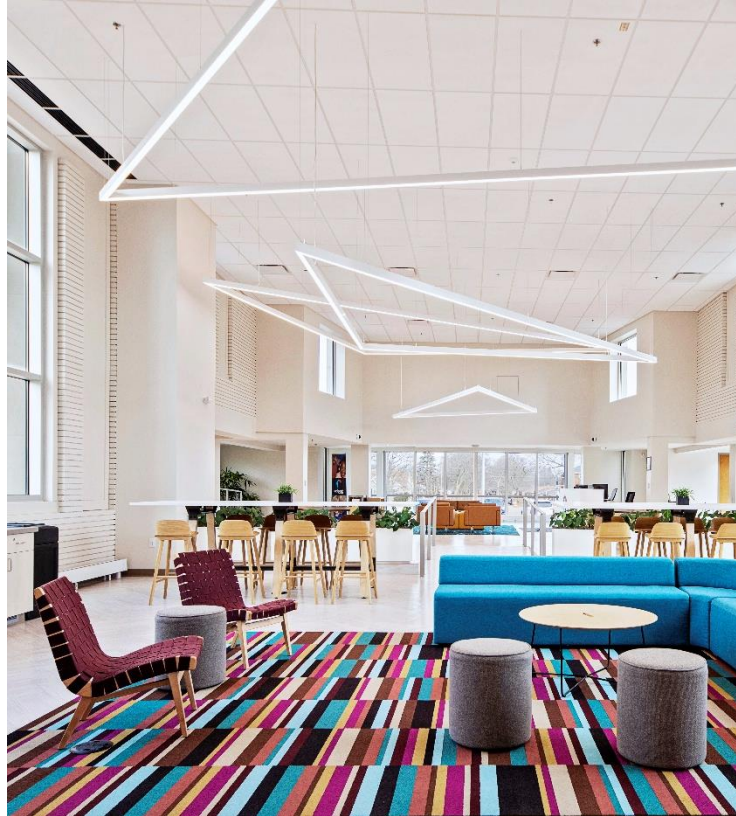
Creative Overview



CREATIVE OVERVIEW

At a Glance

Creative Business Interiors is a service provider for commercial spaces. Every step of our project process is in-house, from designing through building, furnishing, and maintaining.



30+

years of industry expertise



65,000+ sq ft

of experience center, office and warehousing space in Milwaukee, Madison and Green Bay



Service experts on-staff: carpenters, painters, and furniture installers

MillerKnoll CERTIFIED DEALER

Certified MillerKnoll commercial furnishings dealer in WI

OUR TEAM APPROACH

Experts at Work

Our holistic project process promises expert attention from a breadth of design-educated professionals, maintaining consistent outcomes and the distinguished Creative name. Your dedicated project team consists of:



Your Account Executive

Committed to listening to your goals, drivers, needs, and concerns. Highly-responsive and dedicated to follow-through, they reflect Creative's professionalism and capability.



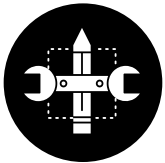
Dedicated Designers & Project Managers

Licensed Interior Designers, Furniture Designers, Project Managers and Coordinators who identify your project's objectives to create a custom solution—while managing logistics and project execution.



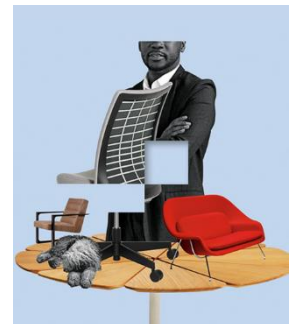
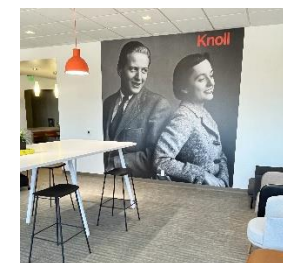
On-staff Installation & Service Technicians

Experienced Furniture Technicians who ensure your product is installed efficiently, with heightened awareness and attention to detail.



On-staff Trades

Backed by an average of over a decade of industry experience, our skilled Painters and Carpenters craft exceptionally finished spaces designed to make a lasting impression.



Framery Four Accessible



FRAMERY FOUR ACCESSIBLE



The door has a door opening ratio of 180° and sturdy black metal pull bar for opening and closing the door effortlessly.

***Will swing to the right when opening from the inside.**

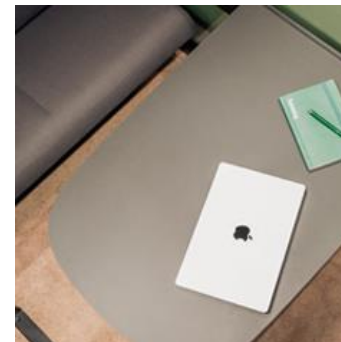
<https://framery.com/en/office-pods-and-booths/framery-four/tech-specs/>



The low threshold (1.27 cm/0.5 in) and the external platform makes it easy to access the pod with a wheelchair.

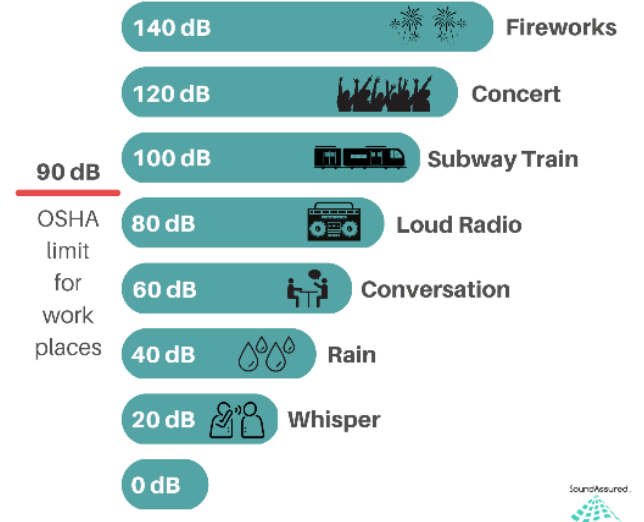


Outlets, charge ports, and an 8-inch touchscreen are embedded in a convenient accessory bar and placed within operative height.



The folding table serves as a functional work desk. The folding sofas have been designed without compromising the seating comfort.

Decibel Levels



Soundproofing: CLASS A 30 DS,A (dB) reduction

Speech level reduction DS,A (dB) is measured using ISO 23351-1.

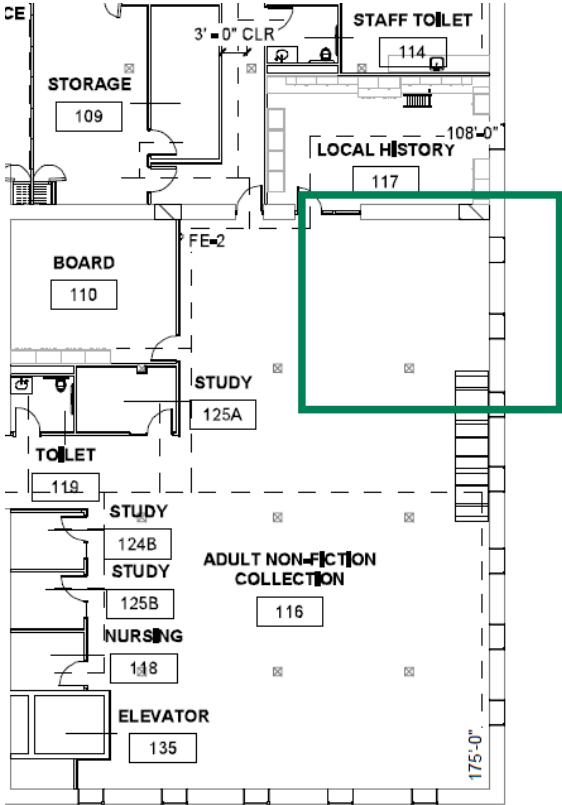
***Pod can be placed next to workspaces without compromising privacy**

Framery Four Accessible

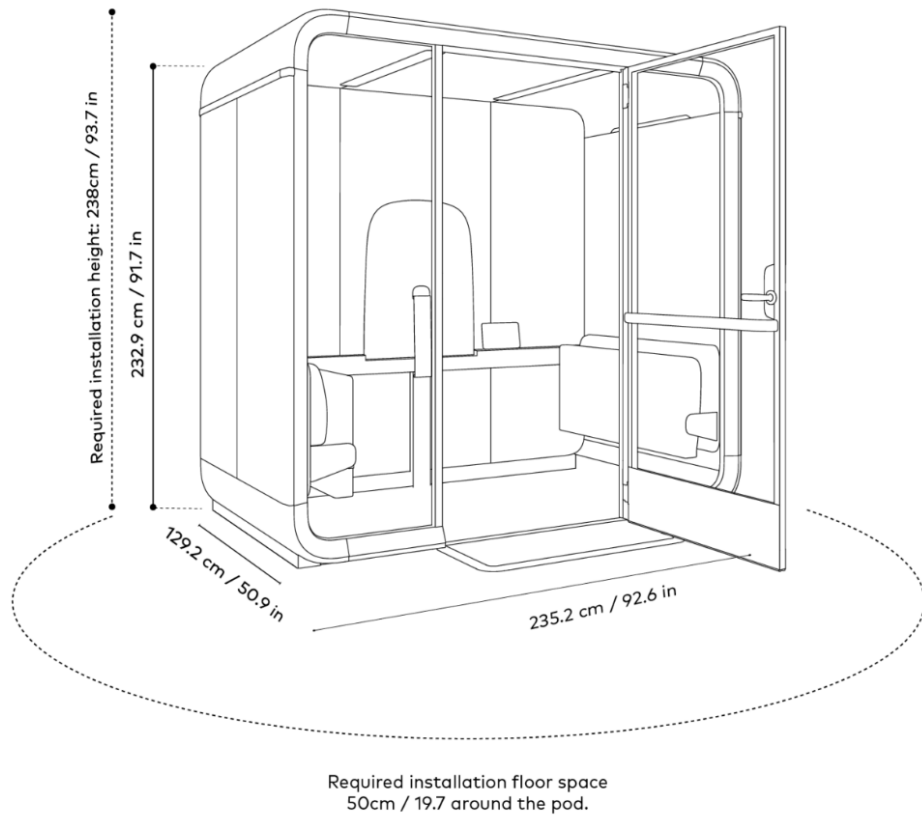
- Adjustable lighting with two pre-set lighting modes
- Adaptive ventilation (air flow volume & direction)
- Occupancy Lights
- 8” touch screen
- Built-in 4G module
- Framery Connect compatibility
- Automatic over-the-air software upgrades
- Framery office sound masking system
- Air filter
- Junction Box
- Two add-on rails embedded on the exterior walls for integrated gather zone functionality
- Standard outlets: (4) power outlets.

<https://framery.com/en-us/office-pods-and-booths/framery-four/>

INSTALLATION



FRAMERY FOUR ACCESSIBLE



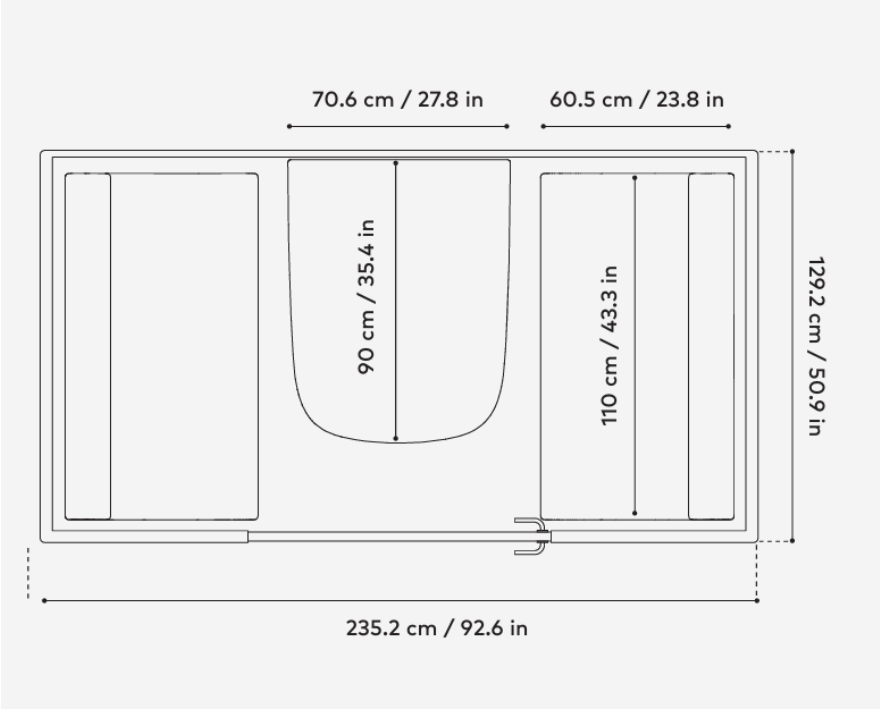
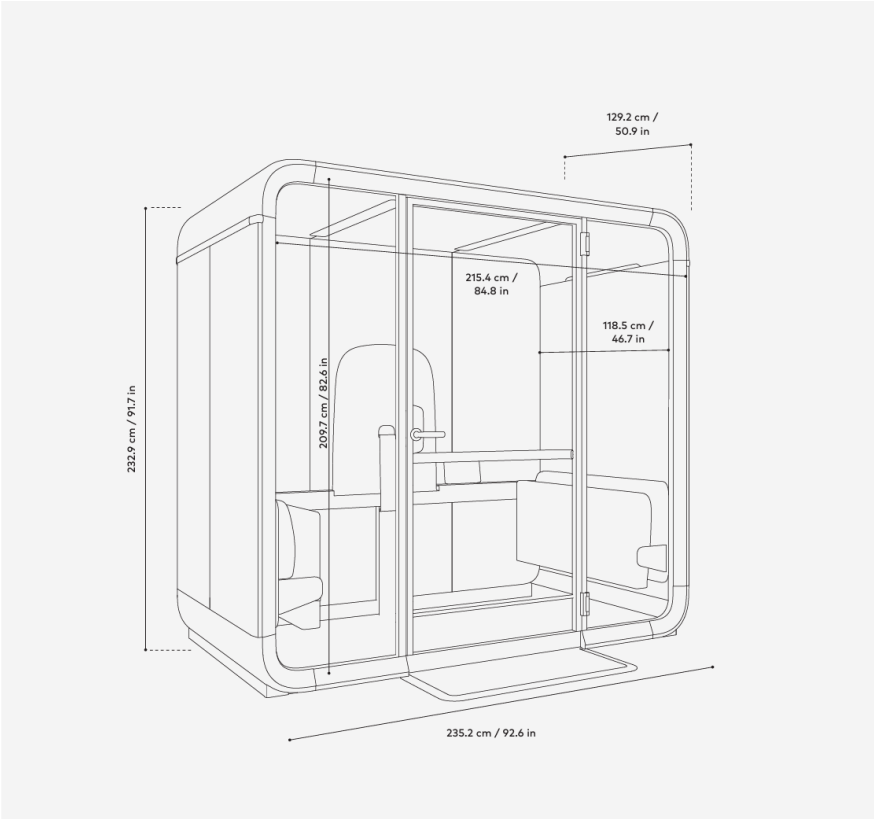
ACCESSIBLE

- The layout features folding furniture, pull bar on the door, an accessible threshold and platform.
- Installation requires 50 cm/19.7 in of free space around the pod.
- Room height requirement 238 cm/93.7 in.
- Framery Four Accessible pods can be placed next to each other.

<https://framery.com/en/office-pods-and-booths/framery-four/tech-specs/accessible-dimensions/>

FRAMERY FOUR ACCESSIBLE

Technical specifications



Performance

- Speech level reduction: 30dB
- Max airflow: 100 l/s
- Low energy consumption: 52W

Accessibility

- T-shaped turning space
- Low threshold and external platform
- Folding furniture

Connectivity

- Built-in 4G connection
- Automatic software updates
- Framery Connect digital services

FRAMERY FOUR ACCESSIBLE



FRAMERY FOUR ACCESSIBLE POD

- 91.7"h x 92.6"w x 50.9"d
- Accessibility ramp
- Exterior: White
- Interior Panel Color: Pure Gray Tonal
- Carpet Color: Light Gray
- Sofa Color: Graphite
- (4) Power Outlets
- Includes moveability kit

Project Notes:

NOTE:
- AS TRADE POLICIES SHIFT AND MATERIAL COSTS RISE, VENDORS MAY ADJUST PRICING OR APPLY SURCHARGES. PRICING REFLECTS CURRENT CONDITIONS, BUT UNEXPECTED INCREASES MAY OCCUR.

Specific Inclusions:

- Terms: 50% deposit / net 15 days
- Quoted price is the discounted cash price. Please inquire for standard pricing
- No cancellations, returns, or changes upon final acceptance of proposal
- Installation during regular working hours Monday through Friday 8:00 a.m. to 5:00 p.m.
- Staging and uncartoning to be done in area(s) agreed upon by both parties
- Prices includes delivery and installation
- Access to installation areas must be clear of debris and other trades prior to start date
- Area must be clear of any equipment and personal items
- Final cleanup includes removal of packaging materials and wiping surfaces
- Any changes or out-of-scope work will require client sign-off and will incur additional costs

Specific Exclusions:

- Client responsible for moving personal items, supplies and equipment
- Prices do not include vacuuming
- Work does not include hookup of systems furniture to building electrical
- Work does not include wiring, hook-up, and/or disconnection of data and communications
- Creative Business Interiors, Inc. and its subcontractors will not be responsible for unknowable and unforeseeable conditions that may arise throughout work on this project.

Leasing / Financing Available:

Unit Price:	\$25,967.00
Shipping, Delivery & Installation:	<u>\$3,894.00</u>
Total investment:	\$29,861.00

On-staff Certified Furniture Installers

Creative Business Interiors employs a field team of 18 professional furniture installers averaging ten years of industry experience.

A dedicated lead installer along with a consistent installation crew will be assigned to each project, ensuring site and project familiarity. Your project's dedicated Furniture Project Manager will manage the entire installation process. We have warehousing facilities in Milwaukee, Madison, and Green Bay where we receive, stage, store and deploy furniture as needed, based on the project schedule.

Milwaukee

1535 South 101st Street
Milwaukee, WI 53214
ph. 414.545.8500

Green Bay

416 George Street, Suite B1
De Pere, WI 54115
ph. 920.352.1870

Madison

201 Moravian Valley Road, Suite A
Wausau, WI 53597
ph. 608.249.0904



Let's Connect



Hi, I'm Mag Miller, an Account Executive with Creative Business Interiors. In this role, I serve as your primary point of contact and advocate—whether you're embarking on a full design-build-furnish project or simply looking to make targeted updates to your space.

With a results-driven approach, I help clients transform their spaces into inspiring, functional, and efficient environments, that best support your goals.

Please feel free to reach out with any questions. I look forward to connecting with you soon!

Mag Miller, Account Executive
mag.miller@creativebusinessinteriors.com
ph. 414.301.7307

