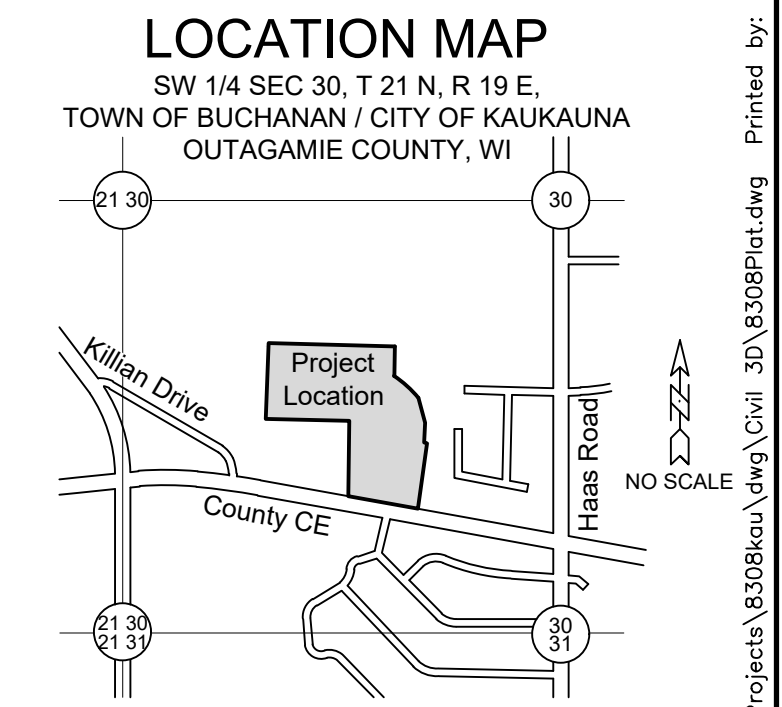
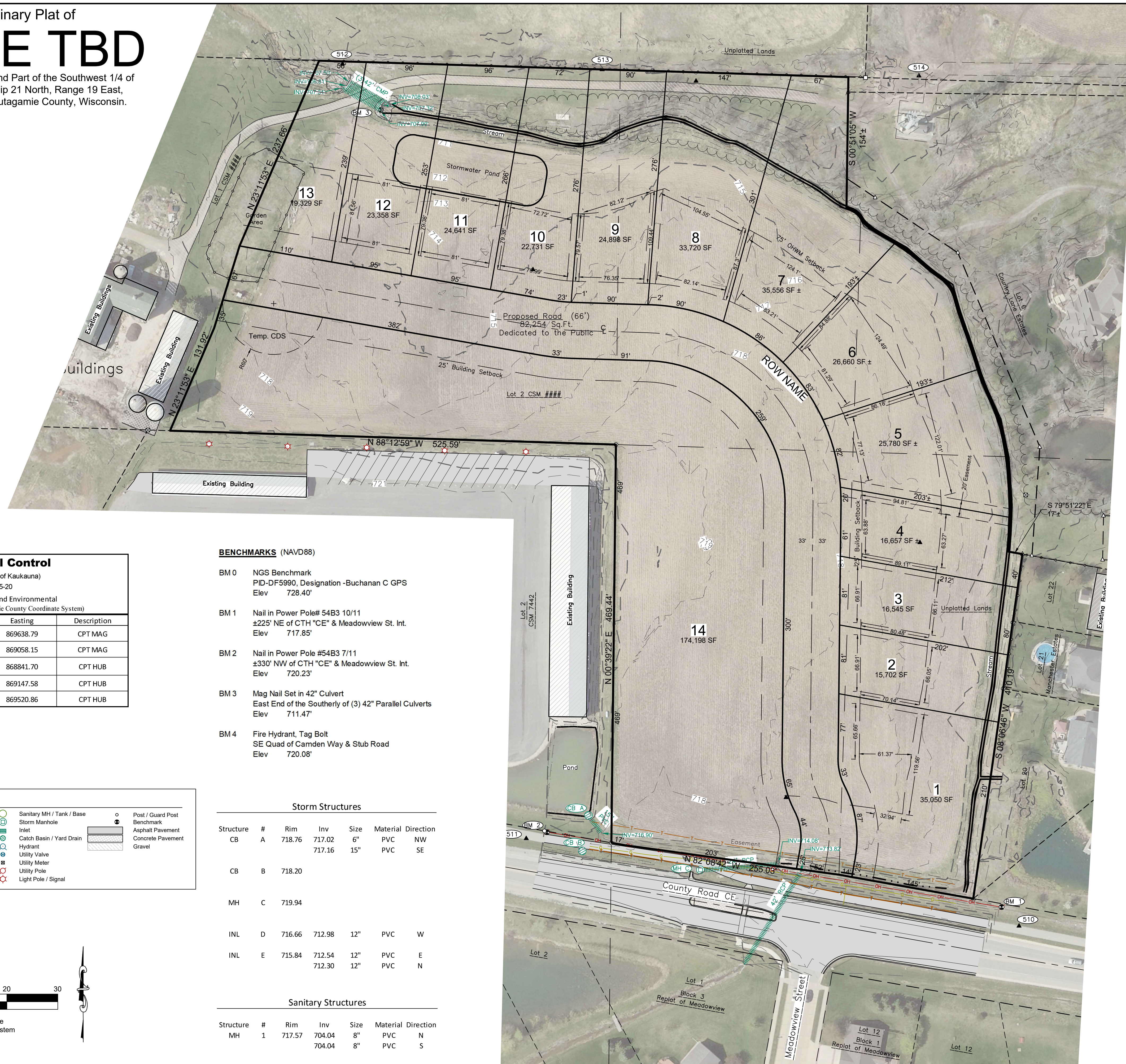


Preliminary Plat of NAME TBD

Lot 2 of CSM _____ and Part of the Southwest 1/4 of Section 30, Township 21 North, Range 19 East, City of Kaukauna, Outagamie County, Wisconsin.



DAVEL ENGINEERING & ENVIRONMENTAL, INC.
Civil Engineers and Land Surveyors
1164 Province Terrace, Menasha, WI 54952
Ph: 920-991-1866 Fax: 920-441-0804
www.davelpro

PRELIMINARY PLAT

Pt of 030019000 & All of 030019600, 325023905
Town of Buchanan / City of Kaukauna, Outagamie County, WI
For: Kaukauna Storage LLC

SURVEYOR'S CERTIFICATE

I, Scott R. Andersen, hereby certify that this Preliminary Plat is a correct representation of all existing land divisions and features, and that I have complied with the preliminary plat requirements for the City of Kaukauna.

Scott R. Andersen, P.L.S. No. S-3169 Date

SUPPLEMENTARY DATA

Total Area = 579,011 SF 13.2923 acres
R/W Area = 83,185 SF 1.9097 acres
Net Area = 495,826 SF 11.3826 acres
Number of Lots = 14
Average lot size =
• Lineal feet of street = 1,250 LF
Existing zoning = RSF and Industrial
Proposed zoning = RTF and CCD
Approving Authorities
City of Kaukauna
Outagamie County
Objecting Authorities
Department of Administration
NOTES
• Utility and Drainage Easements will be shown on Final Plat
• Lands to be annexed to the City of Kaukauna

Horizontal Control			
PN 8308 - (City of Kaukauna)			
2024-05-20			
Davel Engineering and Environmental Horizontal Control (per Outagamie County Coordinate System)			
Point Number	Northing	Easting	Description
510	561390.51	869638.79	CPT MAG
511	561493.68	869058.15	CPT MAG
512	562406.78	868841.70	CPT HUB
513	562400.13	869147.58	CPT HUB
514	562392.78	869520.86	CPT HUB

BENCHMARKS (NAVD88)

- BM 0 NGS Benchmark
PID-DF5990, Designation -Buchanan C GPS
Elev 728.40'
- BM 1 Nail in Power Pole# 54B3 10/11
±225' NE of CTH "CE" & Meadowview St. Int.
Elev 717.85'
- BM 2 Nail in Power Pole #54B3 7/11
±330' NW of CTH "CE" & Meadowview St. Int.
Elev 720.23'
- BM 3 Mag Nail Set in 42" Culvert
East End of the Southerly of (3) 42" Parallel Culverts
Elev 711.47'
- BM 4 Fire Hydrant, Tag Bolt
SE Quad of Camden Way & Stub Road
Elev 720.08'

Storm Structures

Structure #	Rim	Inv	Size	Material	Direction
CB A	718.76	717.02	6"	PVC	NW
CB B	718.20	717.16	15"	PVC	SE
MH C	719.94				
INL D	716.66	712.98	12"	PVC	W
INL E	715.84	712.54	12"	PVC	E
		712.30	12"	PVC	N

Sanitary Structures

Structure #	Rim	Inv	Size	Material	Direction
MH 1	717.57	704.04	8"	PVC	N
		704.04	8"	PVC	S

LEGEND	
OH	Overhead Utility Lines
Sto	Storm Sewer (Pipe Size)
C	Underground Gas Line
T	Underground Telephone
Fence - Steel	
Treeline	
Culvert	
800	Index Contour - Existing
799	Intermediate Contour - Existing
Sanitary MH / Tank / Base	
Storm Manhole	
Inlet	
Catch Basin / Yard Drain	
Hydrant	
Utility Valve	
Utility Meter	
Utility Pole	
Light Pole / Signal	
Post / Guard Post	
Benchmark	
Asphalt Pavement	
Concrete Pavement	
Gravel	



Bearings are referenced to the Outagamie County coordinate system



Oct 03, 2024 - 11:40 AM J:\Projects\8308kou.dwg\Civil 3D\8308Plat.dwg Printed by: scott