

R:\0881771-05-22 BASSETT MECH OFFICE ADDITION\DRAWINGS\171-05-22 ENG.dwg 11/2/2022 11:37:34 AM

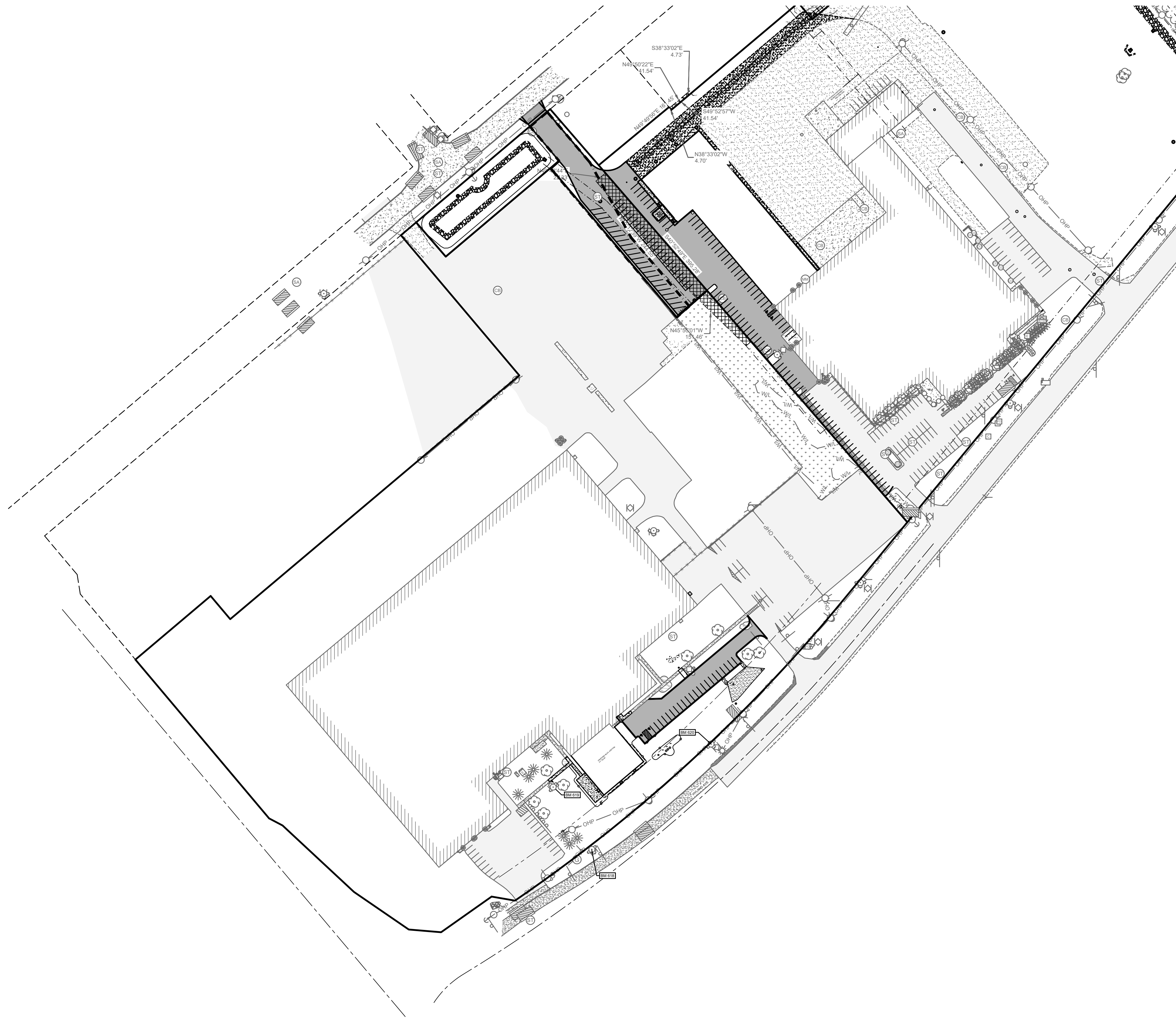
E

D

C

B

A



### LOCATION MAP

1215 HYLAND AVENUE  
KAUKAUNA, WI 54130

NOT TO SCALE

### LEGAL DESCRIPTION

CSM 3651 LOT 1 (PLATTED OUT OF PRT PC33 & 34-21-18) EXCEPTING ROW IN #2099252 &  
CSM 3651 LOT 2 (PLATTED OUT OF PRT PC33 & 34-21-18) EXCEPTING ROW IN #2099252,  
CITY OF KAUKAUNA, OUTAGAMIE COUNTY, WISCONSIN



milwaukee | madison | green bay | denver | atlanta

E

### PROJECT INFORMATION

**Bassett Mechanical  
Office Addition**

**1215 Hyland Ave.  
Kaukauna, WI 54130**

### ISSUANCE AND REVISIONS

DATE	DESCRIPTION
11/3/2022	CITY SUBMITTAL

C

### KEY PLAN

B

### CIVIL GENERAL NOTES:

- SURVEY WAS PERFORMED BY MACH IV ENGINEERING & SURVEYING LLC SEPTEMBER 6, 2022.
- SURVEY VERTICAL DATUM IS NAVD83.
- THIS SURVEY DOES NOT GUARANTEE THE EXISTENCE/ NON-EXISTENCE, SIZE, TYPE OR LOCATION OF UNDERGROUND UTILITIES. UTILITIES SHOWN ARE BASED ON ABOVEGROUND UTILITY STRUCTURES (I.E. VALVES, MANHOLES ETC.), AND AVAILABLE UTILITY MAPS AND PLANS.
- UNLESS OTHERWISE INDICATED, ALL EXISTING STRUCTURES AND FACILITIES SHALL REMAIN.
- PROVIDE TURF, AS SPECIFIED TO ALL DISTURBED AREAS NOT RECEIVING PAVEMENTS, CURBS, SIDEWALKS, BUILDINGS, OR LANDSCAPING, WITHIN THE LIMITS OF CONSTRUCTION.
- NO LAND DISTURBING ACTIVITIES SHALL TAKE PLACE UNTIL ALL TEMPORARY SOIL EROSION DEVICES ARE INSTALLED.
- ALL GRADE TRANSITIONS BETWEEN NEW AND EXISTING SHALL BE SMOOTH AND GRADUAL WITH NO SHARP OR ABRUPT CHANGES.
- COORDINATE THE WORK OF ALL TRADES - VERIFY ALL FIELD CONDITIONS, QUANTITIES AND DIMENSIONS PRIOR TO COMMENCEMENT OF WORK. ANY DISCREPANCIES SHALL BE PROMPTLY BROUGHT TO THE ATTENTION OF THE ARCHITECT.
- EXECUTE ALL WORK WITH CARE AS TO PROTECT FROM DAMAGE ADJACENT EXISTING FEATURES TO REMAIN. ANY SUCH DAMAGE SHALL BE REPAIRED OR REPLACED TO MATCH THE ORIGINAL CONDITION AS APPROVED BY THE ARCHITECT.
- UNLESS REFERRED TO, OR INDICATED AS "EXISTING", ALL WORK SHOWN ON THESE DRAWINGS SHALL BE CONSIDERED AS NEW AND PROVIDED UNDER THIS CONTRACT.
- FINISHED GRADE OF TOPSOIL (AFTER COMPACTION) SHALL BE 1/2" TO 1" BELOW TOP OF ABUTTING PAVEMENTS, SIDEWALKS, AND CURBING.
- NO DISTURBANCE SHALL OCCUR OUTSIDE OF SITE LIMITS.
- GENERAL CONTRACTOR SHALL OBTAIN APPROVAL FROM OWNER AND MUNICIPALITY PRIOR TO ANY LAND DISTURBANCE OUTSIDE THE CONSTRUCTION LIMITS.
- CONTRACTOR SHALL BE RESPONSIBLE FOR OBTAINING WORK IN RIGHT OF WAY PERMITS.
- NO HAZARDOUS MATERIALS WILL BE STORED ON-SITE.
- FOR LEGEND AND ABBREVIATIONS SEE SHEET C0.1.
- FOR EROSION CONTROL PLAN AND NOTES SEE SHEET C5.0 AND C5.1.
- FOR NOTES SHOWN THUS, "C", SEE SHEET KEY NOTES, ON SHEET THEY APPEAR.

### SHEET INFORMATION

### PROGRESS DOCUMENTS NOT FOR CONSTRUCTION

These documents reflect progress and intent and may be subject to change, including additional detail. These are not final construction documents and shall not be used for final bidding or construction-related purposes.

PROJECT MANAGER PM

PROJECT NUMBER 922140

### COVER SHEET

# C001

© 2022 Epstein Uhen Architects, Inc.

### CIVIL LEGEND

EXISTING	PROPOSED	EXISTING	PROPOSED	EXISTING	PROPOSED
CABLE PEDESTAL		EVERGREEN SHRUB		STANDARD DUTY ASPHALT	
ELECTRIC METER		EVERGREEN TREE		HEAVY DUTY ASPHALT	
ELECTRIC PEDESTAL		TREE		BUILDING	
GUY WIRE		TREE SHRUB		ASPHALT	
POWER POLE		BUILDING OVERHANG		CONCRETE	
GAS METER		UNDERGROUND CABLE		GRAVEL	
GAS VALVE		OVERHEAD WIRE		LANDSCAPE WOOD MULCH	
BOLLARD		UNDERGROUND ELECTRIC		LANDSCAPE STONE MULCH	
HANDICAP PARKING		GAS			
SANITARY CLEANOUT		LANDSCAPE			
SANITARY MANHOLE		FENCE			
CATCH BASIN		GUARDRAIL			
CULVERT		CENTERLINE			
DOWNSPOUT		CURB			
INLET		PARKING STRIPE			
INLET 2' X 2'		SANITARY SEWER			
STORM CLEANOUT		CULVERT			
STORM MANHOLE		STORM SEWER			
FIBER OPTIC PEDESTAL		FIBER OPTIC			
SIGN		WOOD LINE			
FIRE HYDRANT		RETAINING WALL			
WATER SHUT OFF		WATERMAIN			
WATER VALVE		CONTOUR MAJOR			
POST INDICATOR VALVE		CONTOUR MINOR			

### ABBREVIATIONS

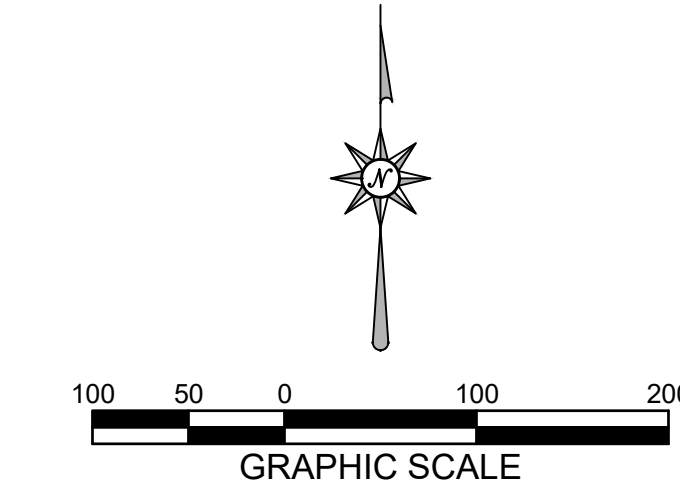
Ø	DIAMETER	MIN	MINIMUM
AC	ACRE	mm	MILLIMETER
AEW	APRON END WALL	N	NORTH
ASTM	AMERICAN SOCIETY FOR TESTING AND MATERIALS	NE	NORTHEAST
BM	BENCHMARK	OC	ON CENTER
CB	CATCH BASIN	OD	OUTSIDE DIAMETER
CI	CURB INLET	OHP	OVER HEAD POWER
CMP	CORRUGATED METAL PIPE	OL	OUTLOT
CO	CLEAN OUT	PSI	POUNDS PER SQUARE INCH
CSM	CERTIFIED SURVEY MAP	PVC	POLYVINYL CHLORIDE
C.T.H	COUNTY TRUNK HIGHWAY	R	RADIUS
DIA	DIAMETER	RAD	RADIUS
DOT	DEPARTMENT OF TRANSPORTATION	RCP	REINFORCED CONCRETE PIPE
E	EAST	REQ	REQUIRED
EL	ELEVATION	S	SOUTH
FDM	FACILITIES DEVELOPMENT MANUAL	SA	SANITARY
FFE	FIRST FLOOR ELEVATION	SCHD	SCHEDULE
FL	FLOW LINE	S.D.	SUMP DEPTH
FO	FIBER OPTIC	SQ	SQUARE
FT	FEET	ST	STORM
G	GAS	S.T.H	STATE TRUNK HIGHWAY
G.F.E	GROUND FLOOR ELEVATION	STM	STORM
GR	GRADE	T	TELEPHONE
HDPE	HIGH DENSITY POLYETHYLENE	T/C	TOP OF CURB
INL	INLET	U.S.H.	UNITED STATES HIGHWAY
INV	INVERT	V	VARIES
M	METER	W	WEST
MAX	MAXIMUM	WAT	WATER
MH	MANHOLE	WI	WISCONSIN
		WisDOT	WISCONSIN DEPARTMENT OF TRANSPORTATION

### DIGGERS HOTLINE

CALL DIGGERS HOTLINE  
1-800-242-8511  
TOLL FREE

WISCONSIN STATUTE 182.0175 (1974) REQUIRES MIN. 3 WORK DAYS NOTICE BEFORE YOU EXCAVATE

THE LOCATIONS OF THE EXISTING UTILITY INSTALLATIONS AS SHOWN ON THE PLANS ARE APPROXIMATE. THERE MAY BE OTHER UNDERGROUND UTILITY INSTALLATIONS WITHIN THE PROJECT AREA THAT ARE NOT SHOWN.



**MACH IV**  
ENGINEERING • SURVEYING • ENVIRONMENTAL

2260 Salschelder Court Green Bay, WI 54131  
PH: 920-569-5765; Fax: 920-569-5767  
www.mach-iv.com  
Project Number: 1771-05-22



R:\0081771-05-22 BASSETT MECH OFFICE ADDITION\DRAWINGS\171-05-22 ENG.dwg 11/2/2022 11:37:35 AM

E

**SPECIFICATION NOTES:**

**DEMOLITION AND SITE CLEARING**

COMPLY WITH APPLICABLE CODES AND REGULATIONS FOR DEMOLITION OPERATIONS AND SAFETY OF ADJACENT STRUCTURES AND THE PUBLIC. OBTAIN REQUIRED PERMITS.

PROVIDE, ERECT, AND MAINTAIN TEMPORARY BARRIERS AND SECURITY DEVICES. CONDUCT OPERATIONS TO MINIMIZE EFFECTS ON AND INTERFERENCE WITH ADJACENT STRUCTURES AND OCCUPANTS. DO NOT CLOSE OR OBSTRUCT ROADWAYS OR SIDEWALKS WITHOUT APPROVAL. CONDUCT OPERATIONS TO MINIMIZE OBSTRUCTION OF ENTRANCES AND EXITS; DO NOT OBSTRUCT EXITS AT ANY TIME; PROTECT PERSONS USING ENTRANCES AND EXITS FROM REMOVAL OPERATIONS.

DO NOT BEGIN DEMOLITION UNTIL RECEIPT OF NOTIFICATION TO PROCEED FROM OWNER. PROTECT EXISTING STRUCTURES AND OTHER ELEMENTS THAT ARE NOT TO BE REMOVED. MINIMIZE PRODUCTION OF DUST DUE TO DEMOLITION OPERATIONS. DO NOT USE WATER IF IT WILL RESULT IN ICE, FLOODING, SEDIMENTATION OF PUBLIC WATERWAYS OR STORM SEWERS, OR OTHER POLLUTION.

COORDINATE WORK WITH UTILITY COMPANIES; NOTIFY BEFORE STARTING WORK AND COMPLY WITH THEIR REQUIREMENTS; OBTAIN REQUIRED PERMITS. PROTECT EXISTING UTILITIES TO REMAIN FROM DAMAGE. DO NOT DISRUPT PUBLIC UTILITIES WITHOUT PERMIT FROM AUTHORITY HAVING JURISDICTION. LOCATE AND MARK UTILITIES TO REMAIN; MARK USING HIGHLY VISIBLE TAGS OR FLAGS, WITH IDENTIFICATION OF UTILITY TYPE; PROTECT FROM DAMAGE DUE TO SUBSEQUENT CONSTRUCTION, USING SUBSTANTIAL BARRICADES IF NECESSARY.

REMOVE TREES, SHRUBS, BRUSH, AND STUMPS IN AREAS INDICATED. DO NOT REMOVE OR DAMAGE VEGETATION BEYOND THE LIMITS INDICATED ON DRAWINGS. CHIP, GRIND, CRUSH, OR SHRED VEGETATION FOR MULCHING, COMPOSTING, OR OTHER PURPOSES; PREFERENCE SHOULD BE GIVEN TO ON-SITE USES. REMOVE STUMPS AND ROOTS TO A DEPTH OF 24 INCHES BELOW PROPOSED FINISHED GRADE. IF VEGETATION OUTSIDE REMOVAL LIMITS OR WITHIN SPECIFIED PROTECTIVE FENCES IS DAMAGED OR DESTROYED DUE TO SUBSEQUENT CONSTRUCTION, CONTRACTOR SHALL REPAIR/ REPLACE AT THEIR EXPENSE.

REMOVE MATERIALS NOT TO BE REUSED ON SITE. LEAVE SITE IN CLEAN CONDITION, READY FOR SUBSEQUENT WORK. CLEAN UP SPILLAGE AND WIND-BLOWN DEBRIS FROM PUBLIC AND PRIVATE LANDS.

**GRADING**

**PREPARATION**  
PROTECT BENCH MARKS, SURVEY CONTROL POINTS, EXISTING STRUCTURES, FENCES, SIDEWALKS, PAVING, AND CURBS FROM GRADING EQUIPMENT AND VEHICULAR TRAFFIC. IDENTIFY REQUIRED LINES, LEVELS, CONTOURS, AND DATUM. STAKE AND FLAG LOCATIONS OF KNOWN UTILITIES. LOCATE, IDENTIFY, AND PROTECT FROM DAMAGE ABOVE - AND BELOW - GRADE UTILITIES TO REMAIN. NOTIFY UTILITY COMPANY TO REMOVE AND RELOCATE UTILITIES.

**ROUGH GRADING**  
REMOVE TOPSOIL FROM AREAS TO BE FURTHER EXCAVATED, RE-LANDSCAPED, OR RE-GRADED, WITHOUT MIXING WITH FOREIGN MATERIALS. DO NOT REMOVE TOPSOIL WHEN WET. REMOVE SUBSOIL FROM AREAS TO BE FURTHER EXCAVATED, RE-LANDSCAPED, OR RE-GRADED. DO NOT REMOVE WET SUBSOIL, UNLESS IT IS SUBSEQUENTLY PROCESSED TO OBTAIN OPTIMUM MOISTURE CONTENT. STABILITY; REPLACE DAMAGED OR DISPLACED SUBSOIL TO SAME REQUIREMENTS AS FOR SPECIFIED FILL.

**SOIL REMOVAL**  
STOCKPILE TOPSOIL TO BE RE-USED ON SITE WHERE INDICATED ON DRAWINGS. HAUL EXCESS TOPSOIL AS INDICATED ON DRAWINGS, PILE DEPTH NOT TO EXCEED 8 FEET, AND PROVIDE SEED AND MULCH. PROTECT FROM EROSION.

**FINISH GRADING**  
VERIFY TRENCH BACKFILLING HAS BEEN ACCEPTED BY OWNER. VERIFY SUBGRADE HAS BEEN CONTOURED AND COMPACTED. PLACE TOPSOIL DURING DRY WEATHER. REMOVE DEBRIS, ROOTS, BRANCHES, STONES, IN EXCESS OF 1/2 INCH IN SIZE, NEAR PLANTS SPREAD TOPSOIL MANUALLY TO PREVENT DAMAGE. FINE GRADE AND RAKE TOPSOIL TO ELIMINATE UNEVEN AREAS AND LOW SPOTS. MAINTAIN PROFILES AND CONTOUR OF SUBGRADE. LIGHTLY COMPACT PLACED TOPSOIL, WHERE TOPSOIL IS TO BE PLACED OR IN AREAS WHERE VEHICLES OR EQUIPMENT HAVE COMPACTED SOIL, SCARIFY SURFACE TO DEPTH OF 3 INCHES.

PLACE TOPSOIL IN AREAS WHERE SEEDING AND PLANTING ARE INDICATED OR WHERE REQUIRED TO FIVE FINISH GRADE. PLACE TOPSOIL TO THE FOLLOWING COMPACTED THICKNESSES:  
AREAS TO BE SEED WITH GRASS: 4-INCHES.  
SHRUB BEDS: 18-INCHES  
FLOWER BEDS: 12-INCHES

**CLEANING AND PROTECTION**  
GRADE STOCKPILE AREA TO PREVENT STANDING WATER. LEAVE SITE CLEAN AND RAKED, READY TO RECEIVE LANDSCAPING.

**EXCAVATION**  
PROTECT BENCH MARKS, SURVEY CONTROL POINTS, EXISTING STRUCTURES, FENCES, SIDEWALKS, PAVING, AND CURBS FROM EXCAVATING EQUIPMENT AND VEHICULAR TRAFFIC. EXCAVATE TO ACCOMMODATE NEW STRUCTURES AND CONSTRUCTION OPERATIONS. NOTIFY OWNER/ENGINEER OF UNEXPECTED SUBSURFACE CONDITIONS AND DISCONTINUE AFFECTED WORK IN AREA UNTIL NOTIFIED TO RESUME WORK. SLOPE BANKS OF EXCAVATIONS DEEPER THAN 4 FEET TO ANGLE OF REPOSE OR LESS UNTIL SHORED. CUT UTILITY TRENCHES WIDE ENOUGH TO ALLOW INSPECTION OF INSTALLED UTILITIES. HAND TRIM EXCAVATIONS. REMOVE LOOSE MATTER. GRADE TOP PERIMETER OF EXCAVATION TO PREVENT SURFACE WATER FROM DRAINING INTO EXCAVATION.

PREVENT DISPLACEMENT OF BANKS AND KEEP LOOSE SOIL FROM FALLING INTO EXCAVATION; MAINTAIN SOIL STABILITY. PROTECT BOTTOM OF EXCAVATIONS AND SOIL ADJACENT TO AND BENEATH FOUNDATION FROM FREEZING.

**FILL AND BACKFILL**

**FILL MATERIALS**  
GENERAL FILL: CLEAN LEAN CLAY OF MODERATE PLASTICITY.

STRUCTURAL FILL: CLEAN GRANULAR FILL CONFORMING TO GRADE 1 OR 2 OF SECTION 209  
WisDOT STANDARD SPECIFICATIONS.

CONCRETE FILL: LEAN CONCRETE.

AGGREGATE FILL: DENSE GRADED BASE CONFORMING TO 3/4" TO 3" DENSE GRADED BASE SECTION 305 OF WISDOT STANDARD SPECIFICATIONS.

GRANULAR FILL: CLEAN GRANULAR FILL CONFORMING TO TABLE 37 OR 39 OF STANDARD SPECIFICATIONS FOR SEWER AND WATER CONSTRUCTION IN WISCONSIN.

PIPE BEDDING: CLEAN GRANULAR FILL CONFORMING TO TABLE 34 OF STANDARD SPECIFICATIONS FOR SEWER AND WATER CONSTRUCTION IN WISCONSIN.

EXCAVATION BELOW SUBGRADE (EBS): 1-1/4-INCH DENSE GRADED BASE CONFORMING TO SECTION 305 OF WisDOT STANDARD SPECIFICATIONS

TOPSOIL: TOPSOIL THAT IS FERTILE, FRIABLE, NATURALLY LOAMY, SURFACE SOIL; REASONABLY FREE OF SUBSOIL, CLAY LUMPS, BRUSH, WEEDS, AND OTHER LITTER AND FREE OF ROOTS; STUMPS, STONES LARGER THAN 2 INCHES IN ANY DIMENSION, AND OTHER EXTRANEOUS OR TOXIC MATTER HARMFUL TO PLANT GROWTH. ON-SITE SOIL MAY BE USED, IF SUITABLE. IF ON-SITE IS NOT SUITABLE, OBTAIN TOPSOIL FROM LOCAL SOURCES OR FROM AREAS HAVING SIMILAR SOIL CHARACTERISTICS TO THAT FOUND AT SITE OF WORK. OBTAIN TOPSOIL FROM NATURALLY WELL-DRAINED SITES WHERE TOPSOIL IS AT LEAST 4 INCHES DEEP.

**FILLING**  
FILL TO CONTOURS, SUBGRADE, AND FINISH ELEVATIONS INDICATED USING UNFROZEN MATERIALS. EMPLOY A PLACEMENT METHOD THAT DOES NOT DISTURB OR DAMAGE OTHER WORK. SYSTEMATICALLY FILL TO ALLOW MAXIMUM TIME FOR NATURAL SETTLEMENT. DO NOT FILL OVER POROUS, WET, FROZEN OR SPONGY SUBGRADE SURFACES. MAINTAIN OPTIMUM MOISTURE CONTENT OF FILL MATERIALS TO ATTAIN REQUIRED COMPACTION DENSITY. CORRECT PAVE AREAS THAT ARE OVER-EXCAVATED WITH EBS FILL. OTHER AREAS USE GENERAL FILL, FLUSH TO REQUIRED ELEVATION, COMPACTED TO MINIMUM 95 PERCENT OF MAXIMUM DRY DENSITY. RESHAPE AND RE-COMPACT FILLS SUBJECTED TO VEHICULAR TRAFFIC.

PROOF ROLL BASE COURSE IN PAVED AREAS WITH A FULLY LOADED TANDDEM AXLE DUMP TRUCK OR EQUIVALENT VEHICLE. CONTRACTOR SHALL NOTIFY OWNER 3 DAYS PRIOR TO PROOF-ROLLING. NO OVER EXCAVATION SHALL BE PERFORMED WITHOUT PRIOR APPROVAL BY THE OWNER. EXCAVATE SOFT OR SPONGY AREAS, FILL AND COMPACT WITH EBS FILL (SEE GENERAL NOTES THIS PAGE).

**FILL AT SPECIFIC LOCATIONS**  
USE GENERAL FILL UNLESS OTHERWISE SPECIFIED OR INDICATED.

AT FOUNDATION WALLS AND FOOTINGS:  
USE STRUCTURAL FILL, COMPACT TO 95 PERCENT MAXIMUM DENSITY.  
DO NOT BACKFILL AGAINST UNSUPPORTED FOUNDATIONS WALLS

PIPE EMBEDMENT:  
OVER BURIED UTILITY PIPING, CONDUITS, AND DUCT BANK IN TRENCHES:

PIPE EMBEDMENT ZONE: UTILITY PIPE BEDDING PLACED IN 8" LIFTS AND COMPACT TO 95% MAXIMUM DRY DENSITY.

TRENCH ZONE:  
1. PAVED AREAS: GRANULAR FILL TO BASE PLACED IN 8" LIFTS AND COMPACTED TO 95% MAXIMUM DRY DENSITY.  
BASE: 1-1/4" AGGREGATE FILL  
2. NON-PAVED AREAS: GENERAL FILL UP TO 4" BELOW FINISH GRADE ELEVATIONS. PLACED IN 8" LIFTS AND COMPACTED TO 90% MAXIMUM DRY DENSITY. TOPSOIL TO FINISHED GRADE.

**STORM UTILITY DRAINAGE**

**INLETS**  
PRECAST CONCRETE INLET STRUCTURE: ASTM C 478.  
CASTINGS: NEENAH FOUNDRY R-3501-TR/TL.

**CATCH BASINS**

PRECAST CONCRETE CATCH BASINS: ASTM C 478.  
CATCH BASINS SHALL HAVE CONSTRUCTED STEPS.  
CASTINGS: NEENAH FOUNDRY R-1700 OR EQUAL WITH TYPE C, NONROCKING, SELF-SEALING COVER.

**APRON END WALLS**

PRECAST REINFORCED CONCRETE: ASTM C 478  
GALVANIZED METAL: ASTM A929

**MANHOLES**

PRECAST CONCRETE MANHOLES: ASTM C 478.  
MANHOLE STEPS: MANHOLES SHALL BE CONSTRUCTED WITH STEPS.  
CASTINGS: NEENAH FOUNDRY R-1500 OR EQUAL WITH TYPE B, NONROCKING, SELF-SEALING COVER. STORM MANHOLES SHALL HAVE OPEN PICK HOLES.

**MISCELLANEOUS**

MORTAR: ASTM C 270, TYPE M.  
WATER: WATER FOR MASONRY MORTAR SHALL BE FRESH, CLEAN AND POTABLE.  
GROUT: ASTM C 476.

**INSTALLATION**

HAND TRIM EXCAVATIONS TO REQUIRED ELEVATIONS. REMOVE LARGE STONES OR OTHER HARD MATTER WHICH COULD DAMAGE PIPING OR IMPEDE CONSISTENT BACKFILLING OR COMPACTION. ALL STORM SEWER CONNECTIONS SHALL MEET SPRING LINE TO SPRING LINE WHERE PRACTICABLE. AT THE END OF EACH WORK DAY, CLOSE OPEN ENDS OF PIPE TEMPORARILY WITH WOOD BLOCKS OR BULKHEADS.

**PIPELINE TESTING**

CHECK EACH STRAIGHT RUN OF PIPELINE FOR GROSS DEFICIENCIES BY HOLDING A LIGHT IN A MANHOLE; IT SHALL SHOW A PRACTICALLY FULL CIRCLE OF LIGHT THROUGH THE PIPELINE WHEN VIEWED FROM THE ADJOINING END OF LINE.

**PVC PIPE DEFLECTION TEST:**

GENERAL:  
TEST INSTALLED PIPELINE FOR DEFLECTION BY PULLING A MANDREL THROUGH SEWER WITHOUT AID OF MECHANICAL PULLING DEVICE. MANDREL SHALL ALLOW AN ULTIMATE DEFLECTION OF 5%. PERFORM TEST AT LEAST 30 DAYS AFTER TRENCH BACKFILL AND COMPACTION HAVE BEEN COMPLETED. NO PIPE SHALL EXCEED A DEFLECTION OF 5 PERCENT. TESTING SHALL BE PERFORMED BEFORE SURFACE COURSE OF ASPHALT IS PLACED.

**CORRECTING DEFICIENCIES OR OBSTRUCTIONS:**

EXCAVATE TO SPRING LINE OF PIPELINE AND REPLACE AND RE-COMPACT PIPE ZONE MATERIAL. INTERNAL PIPE RE-ROUNDING OR VIBRATION WILL NOT BE ALLOWED. IF PIPE DOES NOT PASS MANDREL TEST AFTER REPLACEMENT OF PIPE ZONE MATERIAL AND TRENCH BACKFILL, RE-EXCAVATE AND REPLACE PIPELINE.

**BITUMINOUS CONCRETE PAVING**

**QUALITY ASSURANCE**  
PERFORM WORK IN ACCORDANCE WITH WDOT STANDARDS. OBTAIN MATERIALS FROM SAME SOURCE THROUGHOUT THE PROJECT. DO NOT PLACE ASPHALT WHEN AMBIENT AIR OR BASE SURFACE TEMPERATURE IS LESS THAN 40 DEGREES F, OR SURFACE IS WET OR FROZEN. PLACE BITUMEN MIXTURE WHEN TEMPERATURE IS NOT MORE THAN 15 DEGREES F BELOW BITUMEN SUPPLIER'S BILL OF LADING AND NOT MORE THAN MAXIMUM SPECIFIED TEMPERATURE.

**MATERIALS**

ASPHALT CEMENT: ASTM D 946.  
AGGREGATE FOR BINDER COURSE: 19.0MM MIX GRADATION.  
AGGREGATE FOR WEARING COURSE: 12.5 MM MIX GRADATION.  
FINE AGGREGATE: WDOT STANDARD.  
MINERAL FILLER: FINELY GROUND PARTICLES OF LIMESTONE, HYDRATED LIME OR OTHER MINERAL DUST, FREE OF FOREIGN MATTER  
TACK COAT: HOMOGENOUS, MEDIUM CURING, LIQUID ASPHALT.

**MIX DESIGN**

SEE DETAIL STANDARD DETAIL SHEET C600

**PREPARATION - TACK COAT**

APPLY TACK COAT IN ACCORDANCE WITH MANUFACTURER'S INSTRUCTIONS.  
TACK COAT IS REQUIRED FOR THE FOLLOWING:  
1. WHEN INSTALLING NEW ASPHALT PAVEMENT OVER EXISTING ASPHALT OR CONCRETE PAVEMENT.  
2. WHEN WEARING SURFACE IS NOT INSTALLED WITHIN 24 HOURS OF PLACING BINDER COURSE.  
3. IN HIGH TRAFFIC AREAS OR TURNING LANES WHERE INDICATED ON DRAWINGS.  
4. WHEN SURFACE OF BINDER COURSE HAS BEEN CONTAMINATED FROM CONSTRUCTION DEBRIS AND/OR TRAFFIC WHICH WOULD AFFECT THE ATTACHMENT OF WEARING COURSE TO THE BINDER COURSE.  
5. CONTACT SURFACES OF CURBS AND WALKS.  
6. DON NOT TACK COAT SURFACES OF MANHOLE FRAMES WITH OIL TO PREVENT BOND WITH ASPHALT PAVEMENT.

**PLACEMENT**

PLACE ASPHALT BINDER COURSE WITHIN 24 HOURS OF APPLYING PRIMER OR TACK COAT. PLACE WEARING COURSE WITHIN TWO HOURS OF PLACING AND COMPACTING BINDER COURSE. COMPACT PAVEMENT BY ROLLING TO 95% SPECIFIED. DO NOT DISPLACE OR EXTRUDE PAVEMENT FROM POSITION. HAND COMPACT IN AREAS INACCESSIBLE TO ROLLING EQUIPMENT. PERFORM ROLLING WITH CONSECUTIVE PASSES TO ACHIEVE EVEN AND SMOOTH FINISH, WITHOUT ROLLER MARKS.

ASPHALT BINDER COURSE AND SURFACE COURSE, SHALL BE INSTALLED IN ACCORDANCE WITH SECTION 455, 460 AND 465 OF WDOT STANDARD SPECIFICATIONS.

PRIOR TO PLACING THE SURFACE COURSE, THE PAVING CONTRACTOR SHALL REMOVE ALL FOREIGN MATTER FROM THE SURFACE OF THE BINDER COURSE AND REPAIR, BY SAW CUTTING, REMOVAL, AND REPLACEMENT. ANY DEPRESSION OR SIGNS OF FAILURE AND ALL SURFACE IRREGULARITIES AS DIRECTED BY THE ENGINEER. A TACK COAT SHALL BE APPLIED PRIOR TO PLACEMENT OF THE SURFACE COURSE.

**PAVEMENT MARKINGS**

PAVEMENT MARKINGS SHALL BE ACCORDANCE WITH WDOT SPECIFICATION SECTION 646. CLEAN ASPHALT SURFACES TO RECEIVE PAVEMENT MARKINGS. LAYOUT AREA AND REVIEW WITH OWNER BEFORE PAINT APPLICATION. LAYOUT AND STRIPE INTERNATIONAL GRAPHICS SYMBOL FOR DEDICATED HANDICAP STALLS. STRIPE PEDESTRIAN WALKS AND DIRECTION ARROWS WHERE INDICATED ON PLANS.

**TOLERANCES**

MAXIMUM VARIATION OF 1/8 INCH MEASURED WITH 10 FOOT STRAIGHT EDGE. COMPACTED THICKNESS SHALL BE WITHIN 1/8 INCH OF INDICATED THICKNESS. VARIATION FROM TRUE ELEVATION SHALL BE WITHIN 1/2 INCH.

**PROTECTION**

IMMEDIATELY AFTER PLACEMENT, PROTECT PAVEMENT FROM MECHANICAL INJURY FOR 2 DAYS OR UNTIL SURFACE TEMPERATURE IS LESS THAN 140 DEGREES F.

**PORTLAND CEMENT CONCRETE PAVING**

PERFORM WORK IN ACCORDANCE WITH ACI 301. OBTAIN CEMENTITIOUS MATERIALS FROM SAME SOURCE THROUGHOUT. FOLLOW RECOMMENDATIONS OF ACI 305R AND ACI 306R WHEN CONCRETING DURING HOT OR COLD WEATHER. DO NOT PLACE CONCRETE WHEN BASE SURFACE TEMPERATURE IS LESS THAN 40 DEGREES F, OR SURFACE IS WET OR FROZEN.

**MATERIALS**

FORM MATERIALS SHALL CONFORM TO ACI 30. JOINT FILLER SHALL BE ½" PRE-FORMED; NON-EXTRUDING BITUMINOUS TYPE (ASTM D 1751) OR SPONGE RUBBER/CORK (ASTM D 1752).

UNLESS NOTED OTHERWISE, REINFORCING STEEL: ASTM A 615/A 615M GRADE 60 (410). STEEL WELDED WIRE REINFORCEMENT: PLAIN TYPE, ASTM A 185/A 185M; IN FLAT SHEETS; UNFINISHED. DOWELS: ASTM A 615/A 615M GRADE 60 (420);DEFORMED BILLET STEEL BARS; UNFINISHED FINISH.

**CONCRETE MATERIALS**

PORTLAND CEMENT; ASTM C150, TYPE I, GRAY

**CONCRETE MIX DESIGN**

THE CONTRACTOR SHALL BE RESPONSIBLE TO COORDINATE TESTING PROCEDURES WITH THE LABORATORY AND BE RESPONSIBLE FOR INCORPORATING INTO THE PAVING CONCRETE OF THE MINIMUM STRENGTHS SPECIFIED.  
STRENGTH OF 4000 PSI AT 28 DAYS  
SLUMP SHALL NOT EXCEED 4 INCHES.  
ALL CONCRETE EXPOSED TO WEATHER SHALL BE AIR-ENTRAINED WITH 4-7% AIR CONTENT. NO OTHER ADMIXTURES SHALL BE USED WITHOUT THE APPROVAL OF THE ENGINEER. CALCIUM CHLORIDE SHALL NOT BE USED.  
MAXIMUM AGGREGATE SIZE ¾"  
DESIGN AND CONSTRUCTION OF CAST-IN-PLACE CONCRETE SHALL CONFORM TO ACI 318 AND CRSI STANDARDS  
CURING COMPOUND: ASTM C 309, TYPE I, CLASS A.  
**REINFORCING STEEL**  
REINFORCING STEEL TO CONFORM TO ASTM-A615, GRADE 60. WELDED WIRE FABRIC SHALL CONFORM TO ASTM-A185. LAP ALL HORIZONTAL REINFORCING AT SPLICES AND AROUND CORNERS 30 BAR DIAMETERS. WELDED WIRE FABRIC IS TO BE LAPPED 6" AND PLACED IN THE CENTER OF THE SLAB UNLESS INDICATED OTHERWISE. REINFORCING SHALL BE PLACED IN CONFORMANCE WITH CRSI "RECOMMENDED PRACTICES FOR PLACING BARS" AND ACI 318. THE REINFORCEMENT SHALL NOT BE PAINTED AND MUST BE FREE OF GREASE, DIRT OR DEEP RUST WHEN PLACED. PROVIDE CONCRETE PROTECTION FOR REBARS PER ACI 318 SECTION 7.7.

**PLACEMENT**

VERIFY COMPACTED SUBGRADE IS ACCEPTABLE AND READY TO SUPPORT PAVING AND IMPOSED LOADS AND GRADES/ ELEVATIONS OF BASE ARE CORRECT. MOISTEN BASE TO MINIMIZE ABSORPTION OF WATER FROM FRESH CONCRETE. COAT SURFACES OF MANHOLE FRAMES WITH OIL TO PREVENT BOND WITH CONCRETE PAVEMENT.

PLACE CONCRETE IN ACCORDANCE WITH ACI 304R. ENSURE REINFORCEMENT, INSERTS, EMBEDDED PARTS, FORMED JOINTS ARE NOT DISTURBED DURING CONCRETE PLACEMENT. PLACE CONCRETE CONTINUOUSLY OVER THE FULL WIDTH OF THE PANEL AND BETWEEN PREDETERMINED CONSTRUCTION JOINTS. DO NOT BREAK OR INTERRUPT SUCCESSIVE POURS SUCH THAT COLD JOINTS OCCUR. APPLY SURFACE RETARDER TO ALL EXPOSED SURFACES IN ACCORDANCE WITH MANUFACTURER'S INSTRUCTIONS. MAXIMUM VARIATION OF SURFACE FLATNESS: ¼"IN 10 FT AND ¼" FROM TRUE POSITION.

ALIGN CURB, GUTTER, AND SIDEWALK JOINTS. PLACE 3/8 INCH WIDE EXPANSION JOINTS AT 20 FOOT INTERVALS AND TO SEPARATE PAVING FROM VERTICAL SURFACES AND OTHER COMPONENTS AND IN PATTERN INDICATED. FORM JOINTS WITH JOINT FILLER EXTENDING FROM BOTTOM OF PAVEMENT TO WITHIN ½ INCH OF FINISHED SURFACE. SECURE TO RESIST MOVEMENT BY WET CONCRETE.

PROVIDE SCORED JOINTS AT SPACING EQUAL TO SIDEWALK WIDTH, OR MAXIMUM FIVE FEET INTERVALS. SAW CUT CONTRACTION JOINTS 3/16 INCH WIDE AT AN OPTIMUM TIME AFTER FINISHING. CUT 1/3 INTO DEPTH OF SLAB. AREA AND SIDEWALK PAVING SHALL RECEIVE LIGHT BROOM TEXTURE PERPENDICULAR TO DIRECTION TO TRAVEL WITH TROWELED AND RADIUSD EDGE RADIUS. CURBS AND GUTTERS SHALL RECEIVE LIGHT BROOM, TEXTURE PARALLEL TO PAVEMENT DIRECTION.

IMMEDIATELY AFTER PLACEMENT, PROTECT PAVEMENT FROM PREMATURE DRYING, EXCESSIVE HOT OR COLD TEMPERATURES, AND MECHANICAL INJURY. DO NOT PERMIT PEDESTRIAN OR VEHICULAR TRAFFIC OVER PAVEMENT FOR 7 DAYS MINIMUM AFTER FINISHING.

**SITE RESTORATION**

GRASS SEED MIX: WDOT NO. 40 OR EQUAL UNLESS NOTED OTHERWISE FOR STORMWATER MANAGEMENT FACILITIES AND LANDSCAPE AREAS.

AT THE END OF EACH DAY, THE GROUNDS SHALL BE CLEANED OF ALL LANDSCAPE RELATED REFUSE AND DEBRIS. ALL PAVED SURFACES AFFECTED BY PLANTING OPERATIONS WILL BE SWEPT AND HOSED OFF. ALL PLANT BEDS SHALL BE FREE OF WEEDS.

**PROJECT INFORMATION**

**Bassett Mechanical**  
**Office Addition**

**1215 Hyland Ave.**  
**Kaukauna, WI 54130**

**ISSUANCE AND REVISIONS**

DATE	DESCRIPTION
11/3/2022	CITY SUBMITTAL

C

**KEY PLAN**

B

**SHEET INFORMATION**

**PROGRESS DOCUMENTS**  
**NOT FOR CONSTRUCTION**

These documents reflect progress and intent and may be subject to change, including additional detail. These are not final construction documents and shall not be used for final bidding or construction-related purposes.

PROJECT MANAGER PM

PROJECT NUMBER 922140

A

**MACH IV**  
ENGINEERING • SURVEYING • ENVIRONMENTAL

2260 Salscheider Court Green Bay, WI 54131  
PH:920-569-5765; Fax: 920-569-5767  
www.mach-iv.com  
Project Number: 1771-05-22

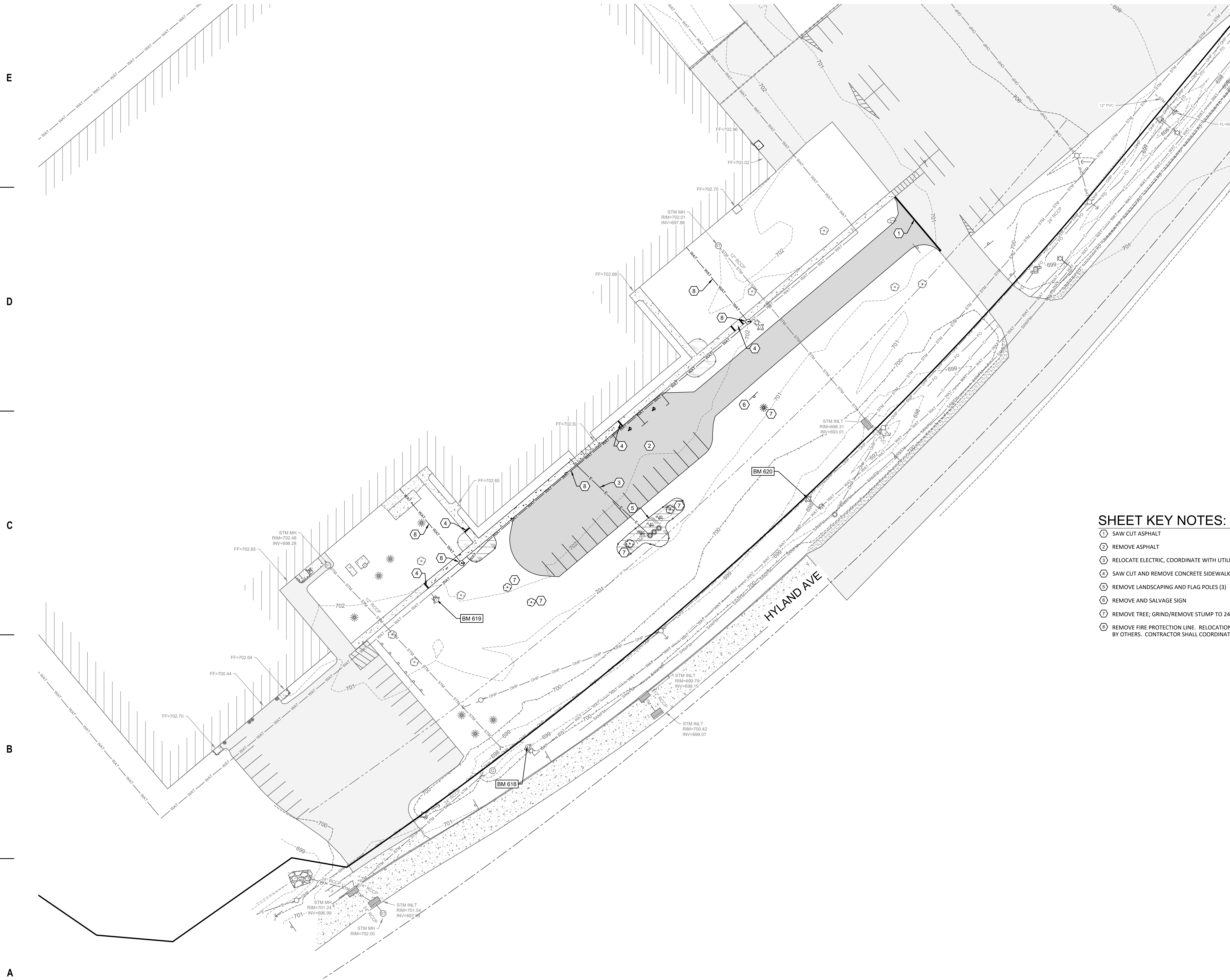
**CONSTRUCTION**  
**SPECIFICATIONS**

**C002**

© 2022 Epstein Uhen Architects, Inc.



R:\Jobs\1771-05-22 BASSETT MECH OFFICE ADDITION\DRAWINGS\1771-05-22 ENG.dwg 11/2/2022 11:37:43 AM



Benchmarks		
Label	Elevation	Description
BM 618	701.55	HYDRANT BURY BOLT
BM 619	703.71	HYDRANT BURY BOLT
BM 620	700.80	HYDRANT BURY BOLT



#### PROJECT INFORMATION

Bassett Mechanical  
Office Addition

1215 Hyland Ave.  
Kaukauna, WI 54130

#### ISSUANCE AND REVISIONS

DATE	DESCRIPTION
11/3/2022	CITY SUBMITTAL

#### SHEET KEY NOTES:

- 1 SAW CUT ASPHALT
- 2 REMOVE ASPHALT
- 3 RELOCATE ELECTRIC, COORDINATE WITH UTILITY OWNER
- 4 SAW CUT AND REMOVE CONCRETE SIDEWALK. PROTECT EXISTING SIDEWALK TO REMAIN
- 5 REMOVE LANDSCAPING AND FLAG POLES (3)
- 6 REMOVE AND SALVAGE SIGN
- 7 REMOVE TREE; GRIND/REMOVE STUMP TO 24" BELOW PROPOSED FINISH GRADE
- 8 REMOVE FIRE PROTECTION LINE. RELOCATION OF LOOP AND POST INDICATOR VALVES BY OTHERS. CONTRACTOR SHALL COORDINATE WITH FIRE PROTECTION CONTRACTOR

#### KEY PLAN

#### SHEET INFORMATION

#### PROGRESS DOCUMENTS NOT FOR CONSTRUCTION

These documents reflect progress and intent and may be subject to change, including additional detail. These are not final construction documents and shall not be used for final bidding or construction-related purposes.

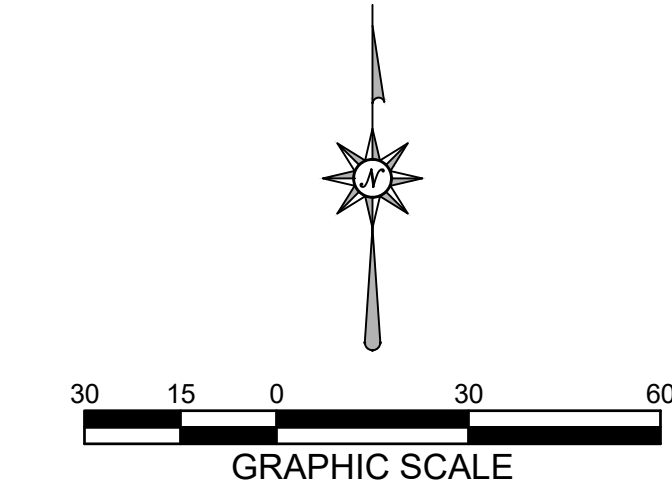
PROJECT MANAGER PM

PROJECT NUMBER 922140

SITE  
DEMOLITION  
PLAN

C100

© 2022 Epstein Uhen Architects, Inc.



**MACH IV**  
ENGINEERING • SURVEYING • ENVIRONMENTAL

2260 Salscheider Court Green Bay, WI 54313  
PH: 920-569-5765; Fax: 920-569-5767  
www.mach-iv.com  
Project Number: 1771-05-22



PROJECT INFORMATION

Bassett Mechanical  
Office Addition

1215 Hyland Ave.  
Kaukauna, WI 54130

ISSUANCE AND REVISIONS

DATE	DESCRIPTION
11/3/2022	CITY SUBMITTAL

KEY PLAN

SHEET INFORMATION

**PROGRESS DOCUMENTS  
NOT FOR CONSTRUCTION**

These documents reflect progress and intent and may be subject to change, including additional detail. These are not final construction documents and shall not be used for final bidding or construction-related purposes.

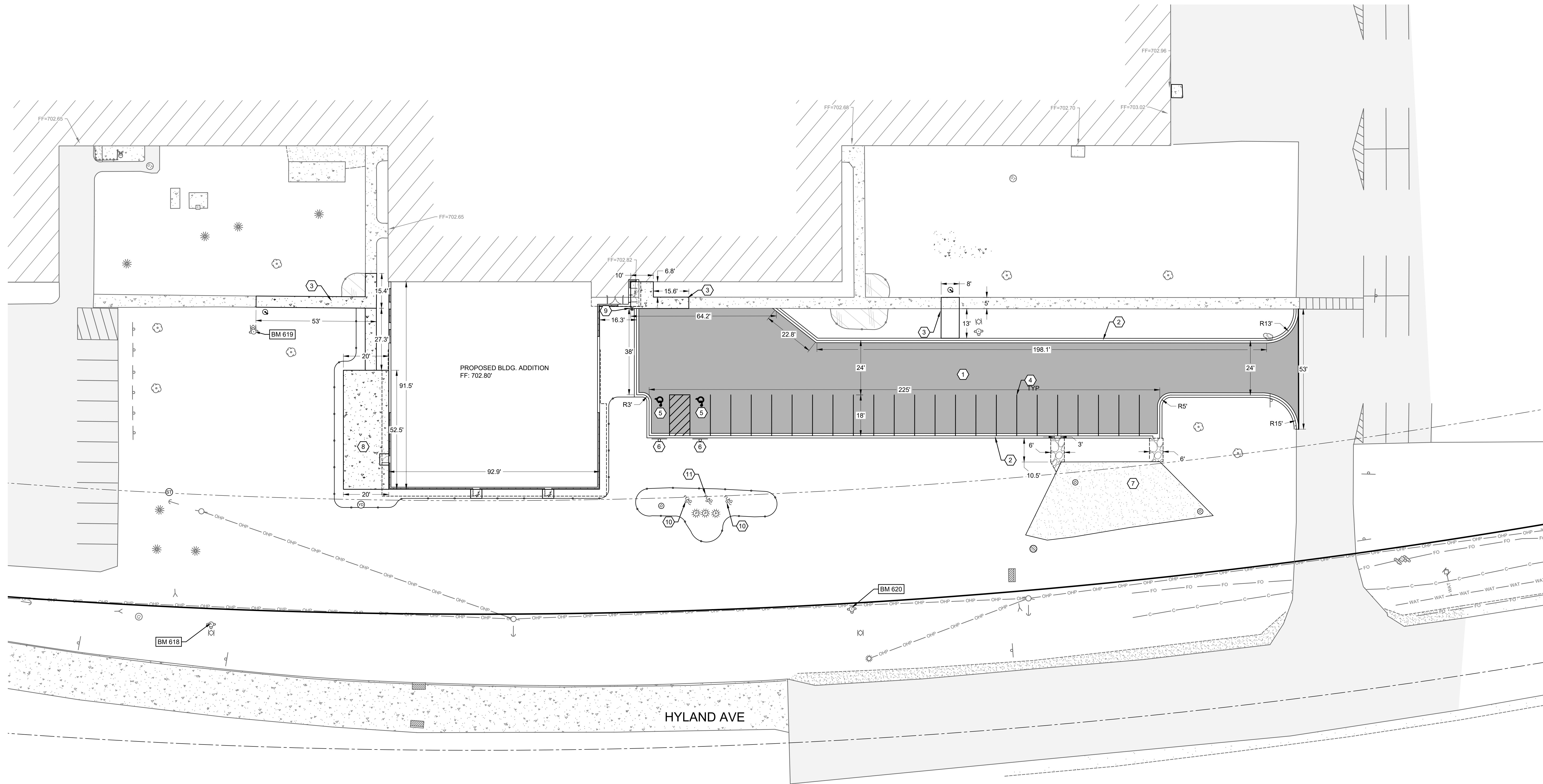
PROJECT MANAGER PM

PROJECT NUMBER 922140

SITE PLAN

**C200**

© 2022 Epstein Uhen Architects, Inc.



SITE STATISTICS

PARCEL ADDRESS: 1215 E HYLAND AVE & 1210 BADGER RD  
PARCEL NUMBER: 322073100 & 322073000  
PARCEL SIZE: 896,244 SF & 263,907 SF: 1,160,151 SF (20.57 AC & 6.06 AC: 26.63 AC)  
ZONING: IPD - INDUSTRIAL PARK DISTRICT

EXISTING SITE  
GREEN SPACE: 262,046 SF (22.6%)  
IMPERVIOUS AREA:  
BUILDING: 263,038 SF (22.7%)  
PAVEMENT: 635,067 SF (54.7%)  
TOTAL IMPERVIOUS: 898,105 SF (77.4%)

PROPOSED SITE  
TOTAL DISTURBED AREA: 36,642 SF (0.84 AC)

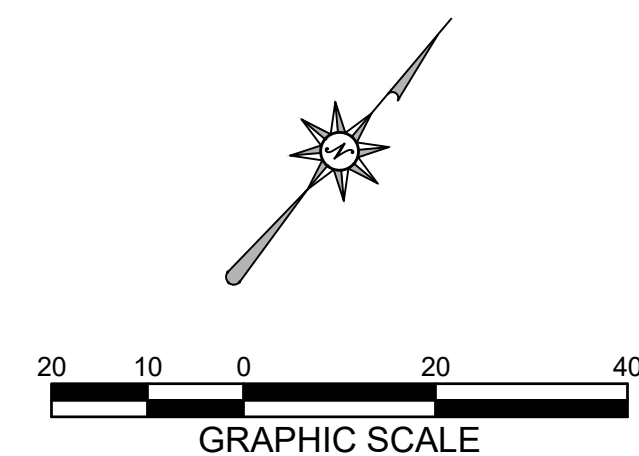
GREEN SPACE PROVIDED: 254,793 SF (22.0%)  
IMPERVIOUS AREA:  
BUILDING: 271,541 SF (23.4%)  
PAVEMENT: 633,817 SF (54.6%)  
TOTAL IMPERVIOUS: 905,358 SF (78.0%)

PARKING PROVIDED  
PARKING SPACES REQ'D/CALCS: EXISTING 17 STALLS

PARKING SPACES PROVIDED: PROPOSED 24 STALLS, INCLUDES 2 ADA HANDICAP

SHEET KEY NOTES:

- ① ASPHALT PAVEMENT; SEE DETAIL A SHEET C600
- ② CONCRETE CURB & GUTTER; SEE DETAIL B SHEET C600
- ③ CONCRETE SIDEWALK; SEE DETAIL C SHEET C600
- ④ 4" PAINT STRIP (WHITE)
- ⑤ PAINTED ADA SYMBOL; SEE DETAIL D SHEET C600
- ⑥ ADA ACCESSIBILITY SIGN SEE DETAIL E SHEET C600
- ⑦ BIOFILTER; SEE SHEET C400
- ⑧ PATIO; SEE DETAIL C SHEET C600
- ⑨ BOLLARD; SEE DETAIL F SHEET C600
- ⑩ 15' HIGH ALUMINUM FLAG POLE
- ⑪ 20' HIGH ALUMINUM FLAG POLE



**MACH IV**  
ENGINEERING • SURVEYING • ENVIRONMENTAL

2260 Salscheider Court Green Bay, WI 54313  
PH: 920-569-5765; Fax: 920-569-5767  
www.mach-iv.com  
Project Number: 1771-05-22



PROJECT INFORMATION

Bassett Mechanical  
Office Addition

1215 Hyland Ave.  
Kaukauna, WI 54130

ISSUANCE AND REVISIONS

DATE	DESCRIPTION
11/3/2022	CITY SUBMITTAL

KEY PLAN

B

SHEET INFORMATION

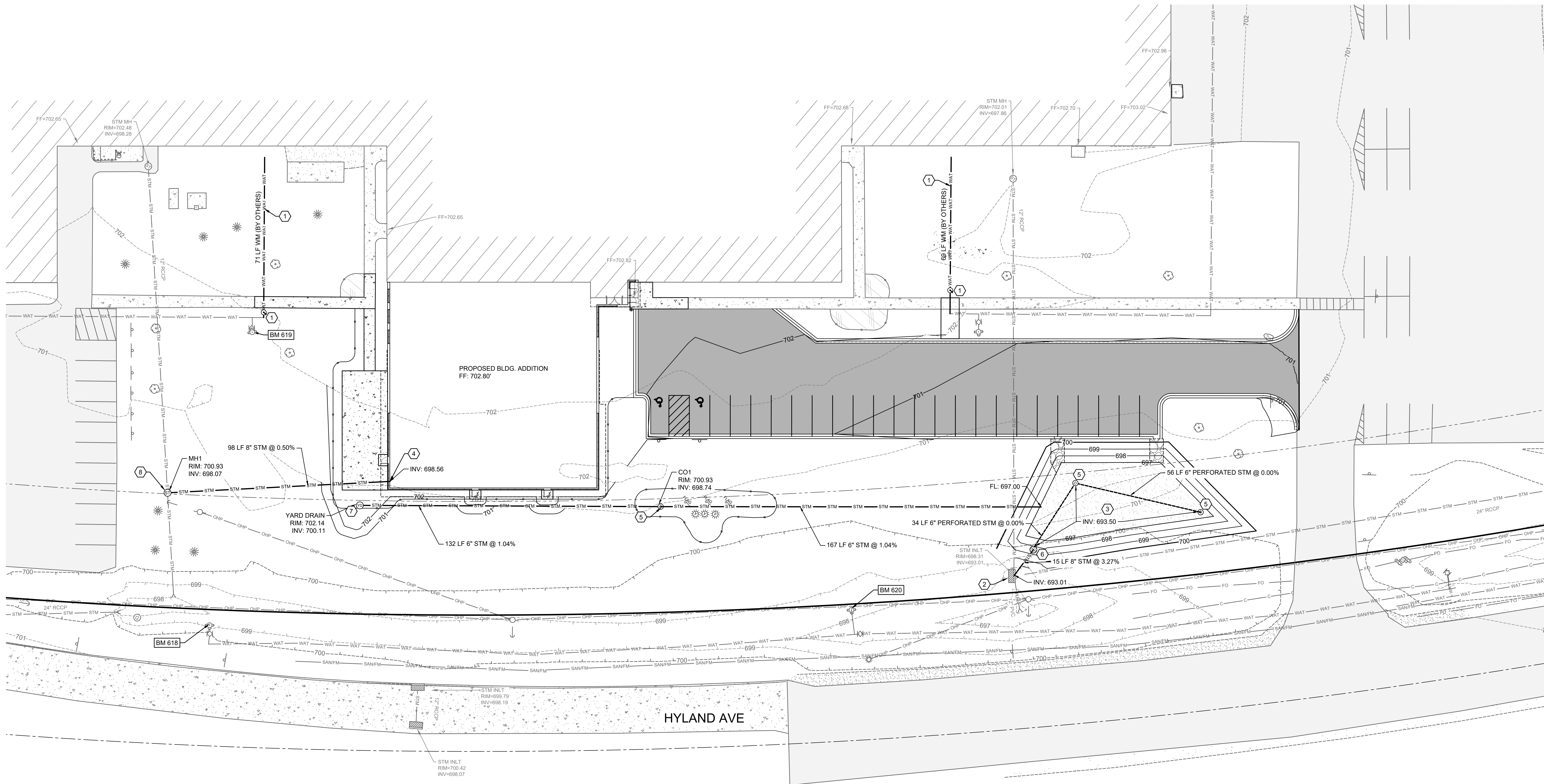
**PROGRESS DOCUMENTS  
NOT FOR CONSTRUCTION**

These documents reflect progress and intent and may be subject to change, including additional detail. These are not final construction documents and shall not be used for final bidding or construction-related purposes.

PROJECT MANAGER PM  
PROJECT NUMBER 922140

UTILITY PLAN

**C300**

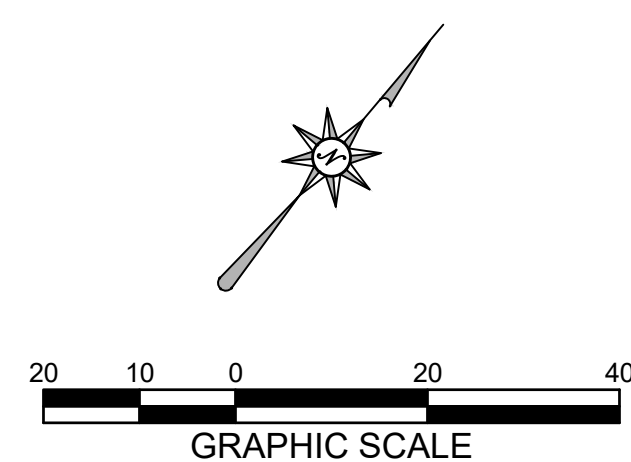


SHEET KEY NOTES:

- RELOCATED FIRE PROTECTION LINE AND POST INDICATOR VALVE; WORK BY OTHERS
- CONNECT TO EXISTING STORM INLET
- BIOFILTER; SEE DETAIL A SHEET C601
- ROOF DRAIN LINE; SEE ARCHITECTURAL DRAWINGS FOR LOCATION
- STORM CLEANOUT; SEE DETAIL D SHEET C601
- BIOFILTER OUTLET STRUCTURE; SEE DETAIL B SHEET C601
- YARD DRAIN; SEE DETAIL E SHEET C601
- CONSTRUCT MANHOLE OVER EXISTING SEWER; SEE DETAIL F SHEET C601

UTILITY NOTES:

- ALL WORK SHALL CONFORM TO THE MOST RECENT EDITION OF "STANDARD SPECIFICATIONS FOR SEWER AND WATER CONSTRUCTION IN WISCONSIN" AND THE MUNICIPALITY'S STANDARD SPECIFICATIONS.
- STORM SEWER SHALL BE PVC SDR 35 (ASTM-D3034) OR SCH 40.
- NOTIFY THE MUNICIPALITY THREE WORKING DAYS PRIOR TO WORK IN THE RIGHT OF WAY.
- CONNECTIONS TO MUNICIPALITY SYSTEMS SHALL BE IN ACCORDANCE WITH THEIR STANDARD SPECIFICATIONS.



**MACH IV**  
ENGINEERING • SURVEYING • ENVIRONMENTAL

2260 Salscheider Court Green Bay, WI 54313  
PH: 920-569-5765; Fax: 920-569-5767  
www.mach-iv.com  
Project Number: 1771-05-22



PROJECT INFORMATION

Bassett Mechanical  
Office Addition

1215 Hyland Ave.  
Kaukauna, WI 54130

ISSUANCE AND REVISIONS

DATE	DESCRIPTION
11/3/2022	CITY SUBMITTAL

KEY PLAN

SHEET INFORMATION

**PROGRESS DOCUMENTS  
NOT FOR CONSTRUCTION**

These documents reflect progress and intent and may be subject to change, including additional detail. These are not final construction documents and shall not be used for final bidding or construction-related purposes.

PROJECT MANAGER PM

PROJECT NUMBER 922140

GRADING PLAN

**C400**

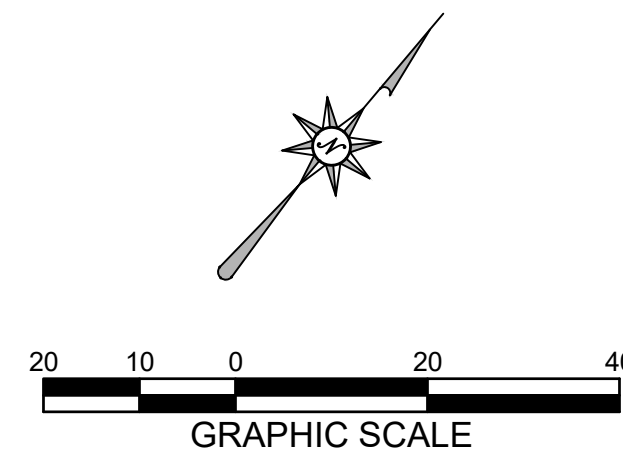
© 2022 Epstein Uhen Architects, Inc.

SHEET KEY NOTES:

- CONSTRUCTION / GRADING LIMITS
- SPOT GRADE: SEE DETAIL A THIS SHEET
- REVERSE PAN CURB AND GUTTER
- EMERGENCY OVERFLOW WEIR: SEE DETAIL C SHEET C601
- BIOFILTER: SEE DETAIL A SHEET C601
- VERTICAL CURB CUT - 3' WIDE
- 6"-12" BOULDERS EXTENDING FROM CURB CUT TO BASIN FLOOR (12" THICK MINIMUM)

702.70	TOP OF CURB/WALL
702.20	GUTTER/PAVEMENT
701.00	FINISHED GRADE
700.95	EXISTING GRADE

**A** SPOT GRADE KEY



**MACH IV**  
ENGINEERING • SURVEYING • ENVIRONMENTAL

2260 Salscheider Court Green Bay, WI 54313  
PH: 920-569-5765; Fax: 920-569-5767  
www.mach-iv.com  
Project Number: 1771-05-22



PROJECT INFORMATION

Bassett Mechanical  
Office Addition

1215 Hyland Ave.  
Kaukauna, WI 54130

ISSUANCE AND REVISIONS

DATE	DESCRIPTION
11/3/2022	CITY SUBMITTAL

KEY PLAN

SHEET INFORMATION

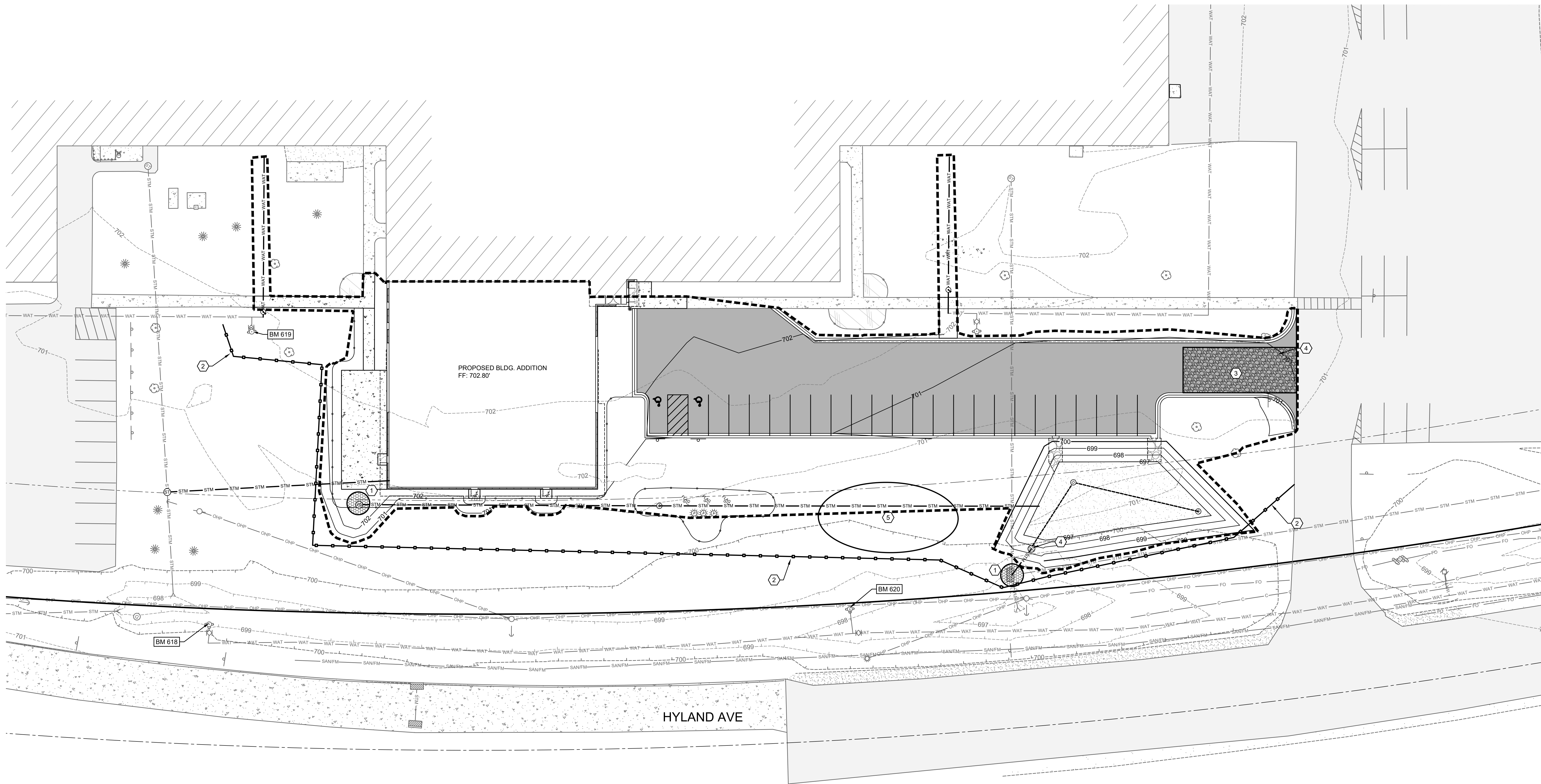
**PROGRESS DOCUMENTS  
NOT FOR CONSTRUCTION**  
These documents reflect progress and intent and may be subject to change, including additional detail. These are not final construction documents and shall not be used for final bidding or construction-related purposes.

PROJECT MANAGER PM  
PROJECT NUMBER 922140

EROSION CONTROL  
PLAN

C500

© 2022 Epstein Uhen Architects, Inc.



PLANNED EROSION CONTROL PRACTICES:

- SILT FENCE** (TECH. STANDARD 1056)  
SILT FENCING WILL BE REQUIRED DOWNSLOPE OF ALL DISTURBED AREAS, INCLUDING ANY DISTURBED AREAS OF THE INDIVIDUAL LOTS, AND WHERE NOTED ON THE SITE PLAN. IF THE SILT FENCE IS LOCATED IN A CHANNELIZED AREA, TWO CONSECUTIVE SILT FENCES WILL BE INSTALLED, OR ONE STRAW BALE FENCE WILL BE INSTALLED.
- INLET PROTECTION** (TECH. STANDARD 1060)  
INLET PROTECTION SHALL BE INSTALLED AT ALL EXISTING AND PROPOSED STORM DRAIN INLETS ON THE PROJECT SITE AND IMMEDIATELY DOWN STREAM FROM ANY DISTURBED AREAS.
- DUST CONTROL** (TECH. STANDARD 1068)  
DUST CONTROL SHALL BE IMPLEMENTED IN ACCORDANCE WITH THE ABOVE MENTIONED TECHNICAL STANDARD. WHERE POSSIBLE DUST CONTROL SHALL BE WISDOT TYPE B SOIL STABILIZER OR TEMPORARY SEED.
- STOCKPILED TOPSOIL/TEMPORARY FILL PILES**  
SILT FENCING OR STRAW BALE FENCING WILL BE REQUIRED AROUND ALL STOCKPILED TOPSOIL OR TEMPORARY FILL PILES. SOIL PILES OF MORE THAN 10 CUBIC YARDS THAT WILL BE IN EXISTENCE FOR MORE THAN 7 DAYS SHALL BE SEEDED AND/OR MULCHED TO PROVIDE VEGETATIVE COVER AND SHALL USE SILT FENCING OR STRAW BALES FENCING UNTIL THE VEGETATION IS ESTABLISHED.
- TEMPORARY CONSTRUCTION ENTRANCE/EXIT** (TECH. STANDARD 1057)  
A NEW GRAVEL CONSTRUCTION ENTRANCE WILL BE INSTALLED AT ALL CONSTRUCTION ACCESS POINTS TO PREVENT SEDIMENT FROM TRACKING ONTO THE ROADWAYS.
- EROSION CONTROL MATS** (TECH. STANDARD 1053)  
EROSION CONTROL MATS WILL BE INSTALLED IN AREAS AS SHOWN ON THE SITE PLAN, AND IN ALL OTHER AREAS WHERE EXCESSIVE EROSION IS TAKING PLACE. INSTALLATION WILL FOLLOW MANUFACTURER'S RECOMMENDATIONS FOR PLACEMENT AND STAPLING.
- DEWATERING** (TECH. STANDARD 1061)  
SHOULD DEWATERING BE REQUIRED FOR INSTALLATION OF PLANNED IMPROVEMENTS, SEDIMENT SHALL BE REMOVED FROM WATER GENERATED DURING DEWATERING ACTIVITIES PRIOR TO DISCHARGING OFF-SITE OR TO WATERS OF THE STATE.

MAINTENANCE PLAN:

- ALL EROSION CONTROL AND STORM WATER MANAGEMENT PRACTICES WILL BE CHECKED FOR STABILITY AND OPERATION EVERY 7 DAYS AND WITHIN 24 HOURS OF A STORM PRODUCING AT LEAST 0.5 INCHES OF RAINFALL. ANY NEEDED REPAIRS WILL BE MADE IMMEDIATELY TO MAINTAIN ALL PRACTICES AS DESIGNED. ALSO, ANY SEDIMENT THAT HAS BEEN DEPOSITED OFF-SITE FROM THIS CONSTRUCTION PROJECT SHALL BE CLEANED UP IMMEDIATELY.
- REMOVE SEDIMENT FROM BEHIND ANY SILT FENCE WHEN IT HAS ACCUMULATED TO A DEPTH OF 1 FENCE HEIGHT OR MORE. WHEN THE FENCE CAN NO LONGER FILTER WATER OR TRAP SEDIMENT, REPAIR THE SILT FENCE TO PROVIDE AN EFFECTIVE BARRIER.
- ALL SEEDED AREAS, INCLUDING THE GRASS LINED CHANNELS, WILL BE RESEED AND MULCHED AS NECESSARY TO MAINTAIN A VIGOROUS, DENSE VEGETATIVE COVER.
- ANY UNPROTECTED DRAINAGE DITCHES EXPERIENCING EXCESSIVE EROSION AND CHANNEL DEGRADATION DUE TO HIGH RUNOFF VOLUMES WILL BE REGRADED AND COVERED WITH A BIODEGRADABLE EROSION CONTROL MAT. INSTALLATION WILL FOLLOW MANUFACTURER'S RECOMMENDATIONS.
- REMOVE SILT FENCE AND TEMPORARY STRUCTURES AFTER FINAL STABILIZATION AND VEGETATIVE COVER IS ESTABLISHED.
- SEDIMENT THAT HAS MIGRATED OFF SITE ONTO ADJACENT PROPERTIES SHALL BE SWEEPED OFF PAVEMENTS AND REMOVED FROM VEGETATED AREAS DAILY.
- COPIES OF THE EROSION & SEDIMENT CONTROL PLAN SHALL BE KEPT ON SITE.
- MAINTAIN EROSION AND SEDIMENT CONTROL PER THE PLAN AND AS NECESSARY TO MEET THE REQUIREMENTS OF THE ORDINANCE, UNTIL THE SITE HAS UNDERGONE FINAL STABILIZATION AND RECEIVED FINAL ACCEPTANCE FROM THE MUNICIPALITY.
- AN EROSION AND SEDIMENT CONTROL PRACTICE INSPECTION LOG SHALL BE MAINTAINED. LOG SHALL NOTE THE TIME, DATE AND LOCATION OF INSPECTION, THE PHASE OF CONSTRUCTION AT THE SITE, PERSON DOING THE INSPECTION, ASSESSMENT OF CONTROL PRACTICES, AND DESCRIPTION OF EROSION AND SEDIMENT CONTROL MEASURES OR MAINTENANCE DONE IN RESPONSE TO INSPECTION.

CONSTRUCTION NOTES:

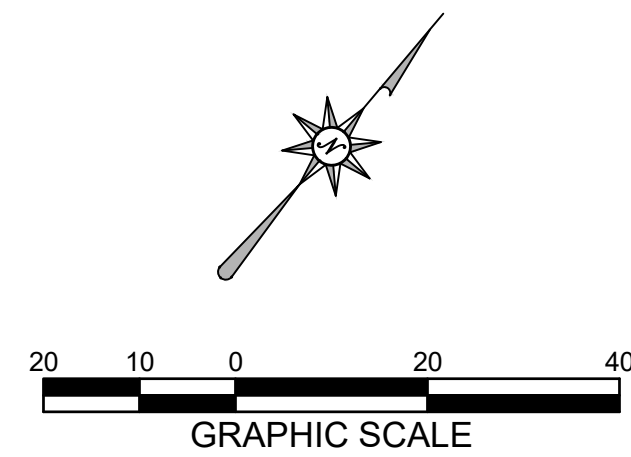
- TOPSOIL TO BE REMOVED FROM THE PROJECT SITE PRIOR TO PLACEMENT OF FILL OR SUBGRADE MATERIAL. EXCESS TOPSOIL TO BE STOCKPILED ON THE SITE AS INDICATED.
- ALL EXCAVATED AREAS NOT RECEIVING PAVEMENT TO BE COVERED WITH A MINIMUM OF 6" OF TOPSOIL, SEEDED AND MULCHED AS SOON AS FINAL GRADE HAS BEEN ACHIEVED. SEEDING SHALL BE IN ACCORDANCE WITH WDNR TECH. STANDARD (1059).
- EROSION CONTROL METHODS SHALL BE IMPLEMENTED, AS DIRECTED BY THE ENGINEER, PRIOR TO AND DURING CONSTRUCTION, TO CONTROL WATER POLLUTION, EROSION AND SILTATION, INCLUDING, BUT NOT LIMITED TO HAY BALE DIKES AND SILT FENCES. ALL EROSION CONTROL MEASURES SHALL BE INSTALLED AND MAINTAINED IN ACCORDANCE WITH THE WDNR TECHNICAL STANDARDS.
- CONTRACTOR IS RESPONSIBLE FOR OBTAINING ALL NECESSARY PERMITS.
- CONTRACTOR IS RESPONSIBLE FOR CONTACTING DIGGERS HOTLINE FOR THE LOCATION OF THE UTILITIES.
- SITE DEWATERING IS NOT ANTICIPATED, HOWEVER SHOULD DEWATERING BE NECESSARY, IT SHALL BE PERFORMED IN ACCORDANCE WITH WDNR TECHNICAL STANDARD (1061).
- THE CONTRACTOR SHALL DISPOSE OF ALL WASTE AND EXCESS MATERIAL AT AN APPROVED LOCATION.

SHEET KEY NOTES:

- INLET PROTECTION; SEE DETAIL A SHEET C501
- SILT FENCE; SEE DETAIL B SHEET C501
- STONE TRACKING PAD; SEE DETAIL C SHEET C501
- TEMPORARY SEDIMENT BASIN; SEE D SHEET C501
- TEMPORARY STOCKPILES

CONSTRUCTION SEQUENCE:

- FALL 2022 TO SPRING 2023
- INSTALL EROSION CONTROL DEVICES IN ACCORDANCE WITH THE WDNR TECHNICAL STANDARDS AND STORMWATER MANAGEMENT PLAN.
  - CONSTRUCT TEMPORARY SEDIMENT BASIN
  - STRIP TOPSOIL WITHIN GRADING LIMITS
  - ROUGH GRADE SITE
  - CONSTRUCT BUILDING
  - INSTALL SITE UTILITIES
  - INSTALL BASE COURSE
  - TOPSOIL, SEED, FERTILIZE AND MULCH/EROSION MAT
  - INSTALL PAVEMENT
  - INSTALL BIOFILTER
  - RE-SEED ANY UNVEGETATED AREAS
  - REMOVE EROSION CONTROL BMPs UPON SITE STABILIZATION



**MACH IV**  
ENGINEERING • SURVEYING • ENVIRONMENTAL

2260 Salscheider Court Green Bay, WI 54313  
PH: 920-569-5765, Fax: 920-569-5767  
www.mach-iv.com  
Project Number: 1771-05-22



Bassett Mechanical  
Office Addition

D 1215 Hyland Ave.  
Kaukauna, WI 54130

DATE	DESCRIPTION
11/3/2022	CITY SUBMITTAL

KEY PLAN

**PROGRESS DOCUMENTS  
NOT FOR CONSTRUCTION**

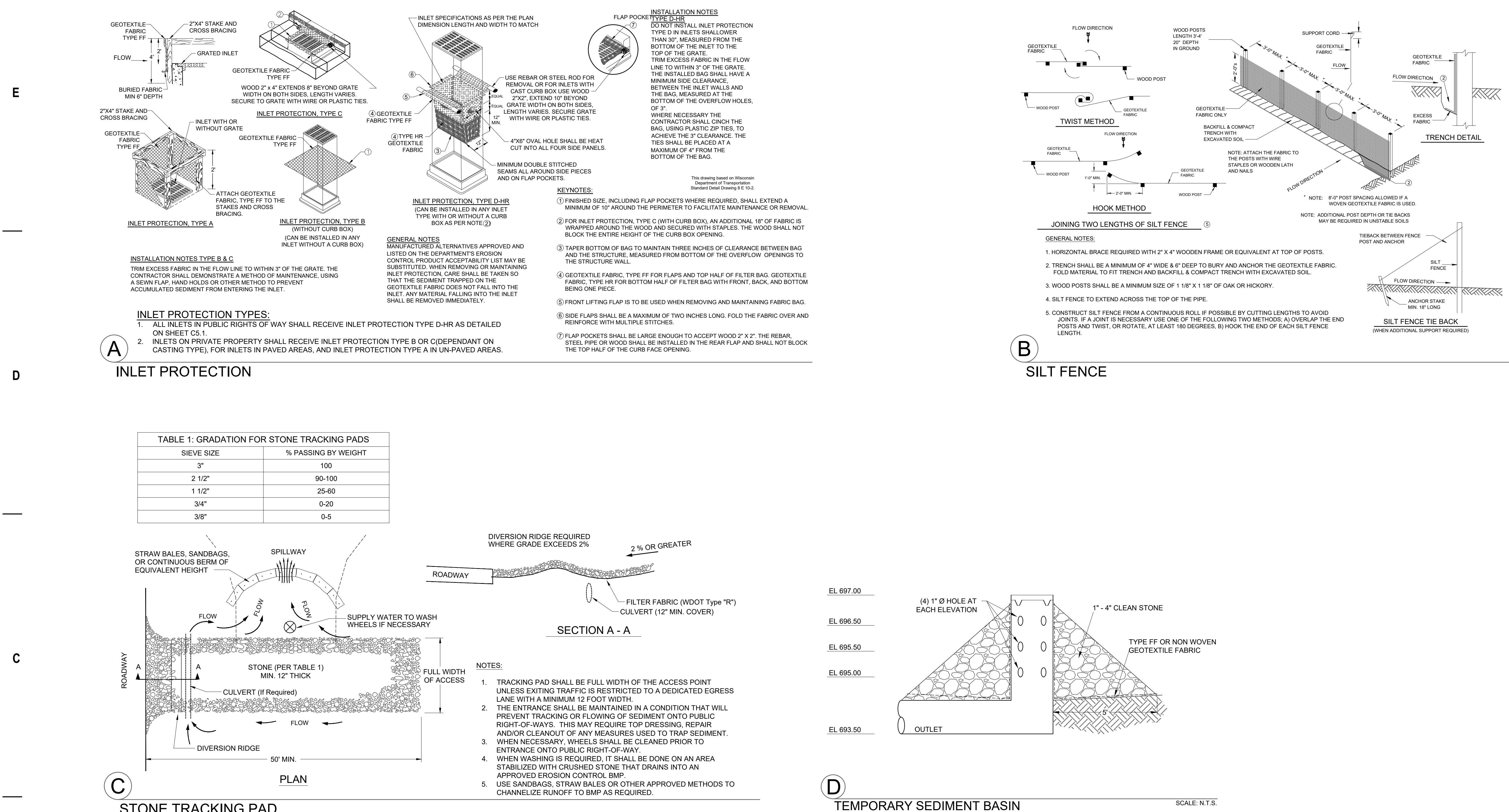
These documents reflect progress and intent and may be subject to change, including additional detail. These are not final construction documents and shall not be used for final bidding or construction-related purposes.

**A** PROJECT NUMBER 92214

**C501**

---

© 2022 Epstein Uhlen Architects, Inc.





R:\Jobs\1771-05-22 BASSETT MECH OFFICE ADDITION\DRAWINGS\1771-05-22 ENG.dwg 11/2/2022 11:38:19 AM



milwaukee | madison | green bay | denver | atlanta

PROJECT INFORMATION

Bassett Mechanical  
Office Addition

1215 Hyland Ave.  
Kaukauna, WI 54130

ISSUANCE AND REVISIONS

DATE	DESCRIPTION
11/3/2022	CITY SUBMITTAL

KEY PLAN

SHEET INFORMATION

PROGRESS DOCUMENTS  
NOT FOR CONSTRUCTION

These documents reflect progress and intent and may be subject to change, including additional detail. These are not final construction documents and shall not be used for final bidding or construction-related purposes.

PROJECT MANAGER PM  
PROJECT NUMBER 922140

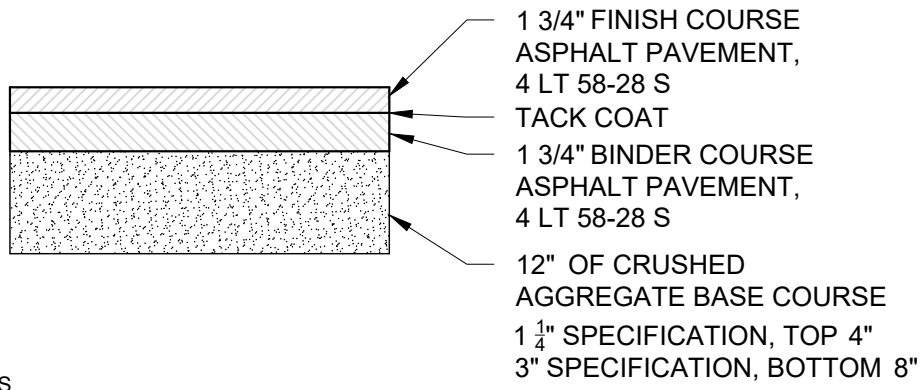
SITE DETAILS

C600

© 2022 Epstein Uhen Architects, Inc.

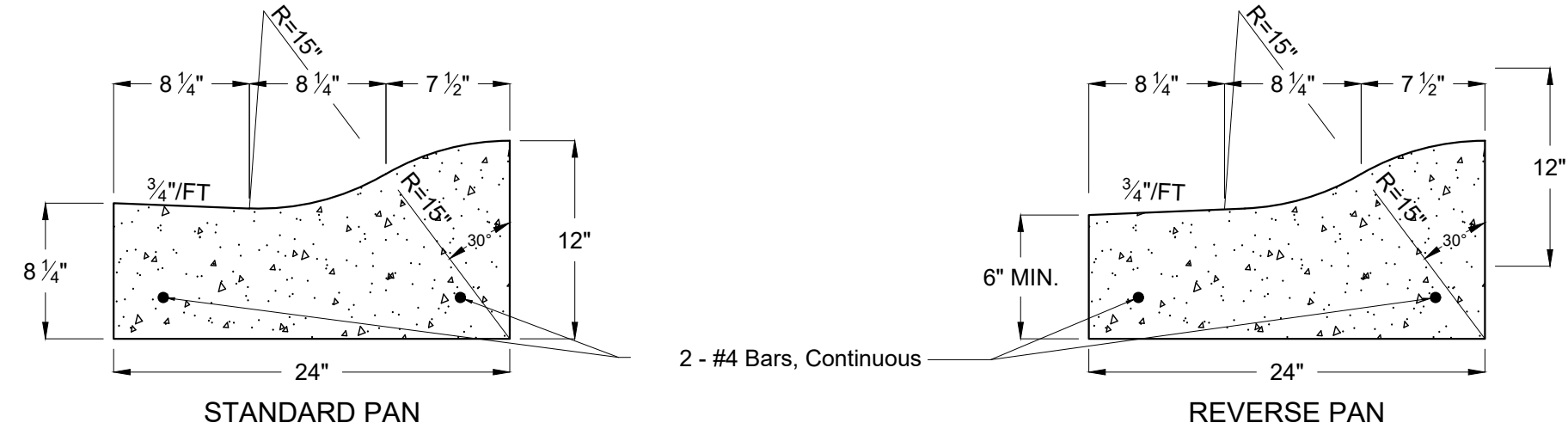


2260 Salscheider Court Green Bay, WI 54313  
PH: 920-569-5765; Fax: 920-569-5767  
www.mach-iv.com  
Project Number: 1771-05-22



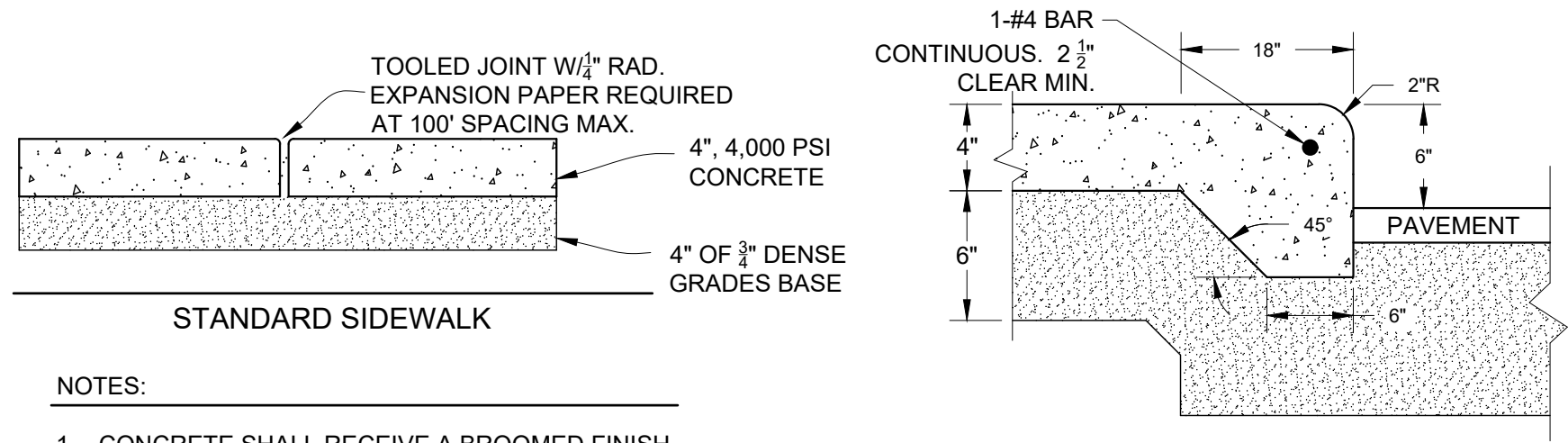
- NOTES:
- CONSTRUCTION SHALL BE IN ACCORDANCE WITH WISCONSIN DOT STANDARD SPECIFICATION FOR ROAD AND BRIDGE CONSTRUCTION.

A STANDARD DUTY ASPHALT PAVEMENT



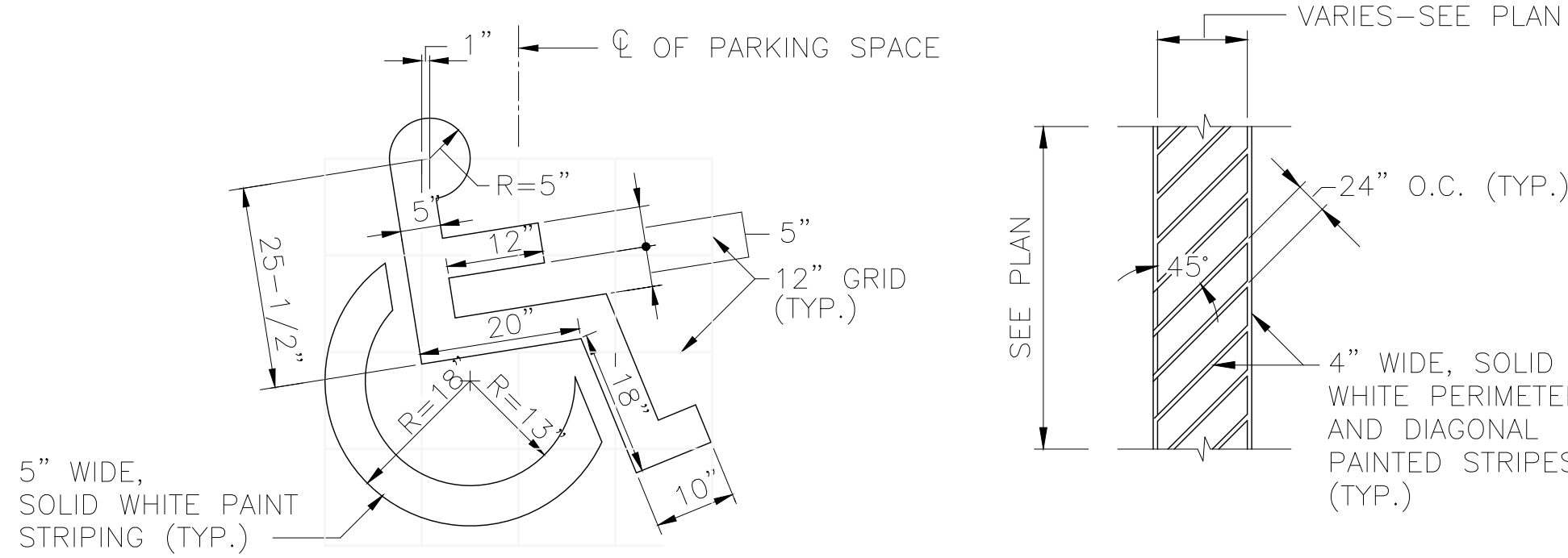
- NOTES:
- THE BOTTOM OF THE CURB AND GUTTER MAY EITHER BE LEVEL OR PARALLEL TO THE SLOPE OF THE SUB-GRADE.
  - LOCATION OF STANDARD AND REVERSE PAN CURB AND GUTTER IS INDICATED ON THE DRAWINGS.
  - CURB SHALL BE PLACED ON A MINIMUM OF 6" OF DENSE GRADED BASE.

B 24" MOUNTABLE CURB AND GUTTER

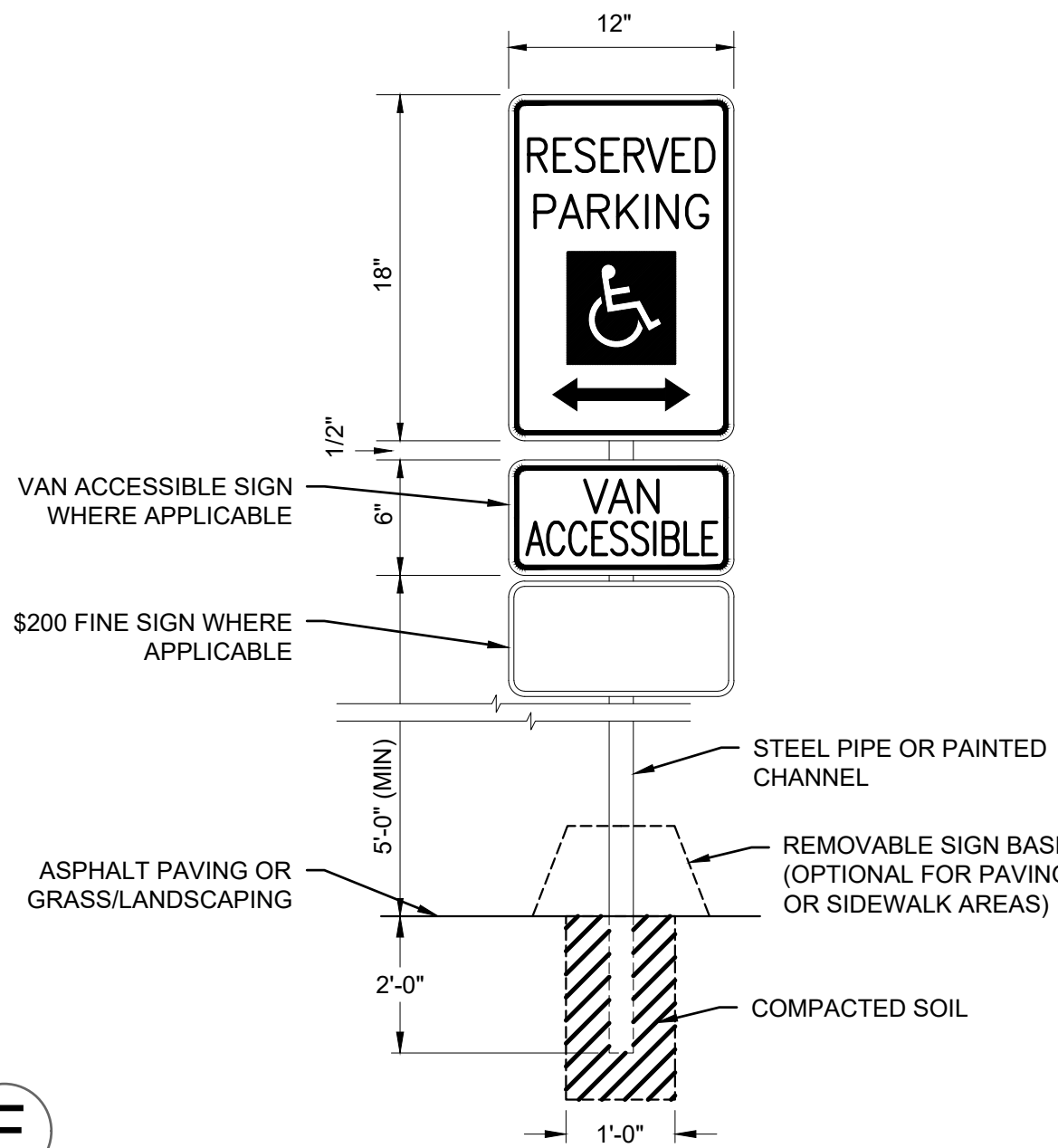


- NOTES:
- CONCRETE SHALL RECEIVE A BROOMED FINISH.
  - JOINT SPACING SHALL BE 9' OR WIDTH OF SIDEWALK, WHICHEVER IS GREATER. (10' MAX).
  - SIDEWALK WIDTH VARIES.

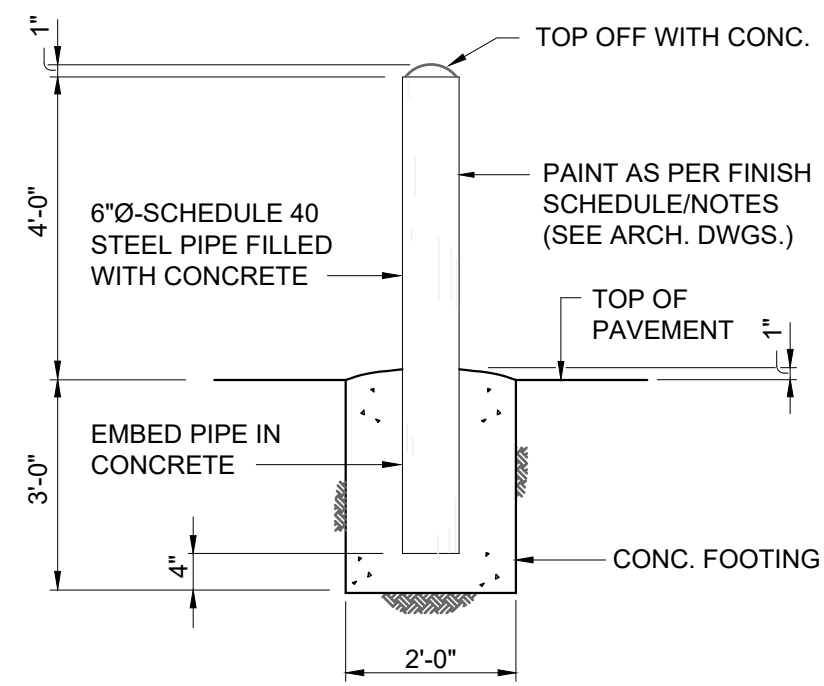
C CONCRETE SIDEWALK



D HANDICAP PAVEMENT MARKING DETAILS



E ADA HANDICAP SIGN



F PIPE BOLLARD



R:\Jobs\1771-05-22 BASSETT MECH OFFICE ADDITION\DRAWINGS\1771-05-22 ENG.dwg 11/2/2022 11:38:21 AM

PROJECT INFORMATION

**Bassett Mechanical  
Office Addition**

**1215 Hyland Ave.  
Kaukauna, WI 54130**

ISSUANCE AND REVISIONS

DATE	DESCRIPTION
11/3/2022	CITY SUBMITTAL

KEY PLAN

SHEET INFORMATION

**PROGRESS DOCUMENTS  
NOT FOR CONSTRUCTION**

These documents reflect progress and intent and may be subject to change, including additional detail. These are not final construction documents and shall not be used for final bidding or construction-related purposes.

PROJECT MANAGER PM  
PROJECT NUMBER 922140

UTILITY DETAILS

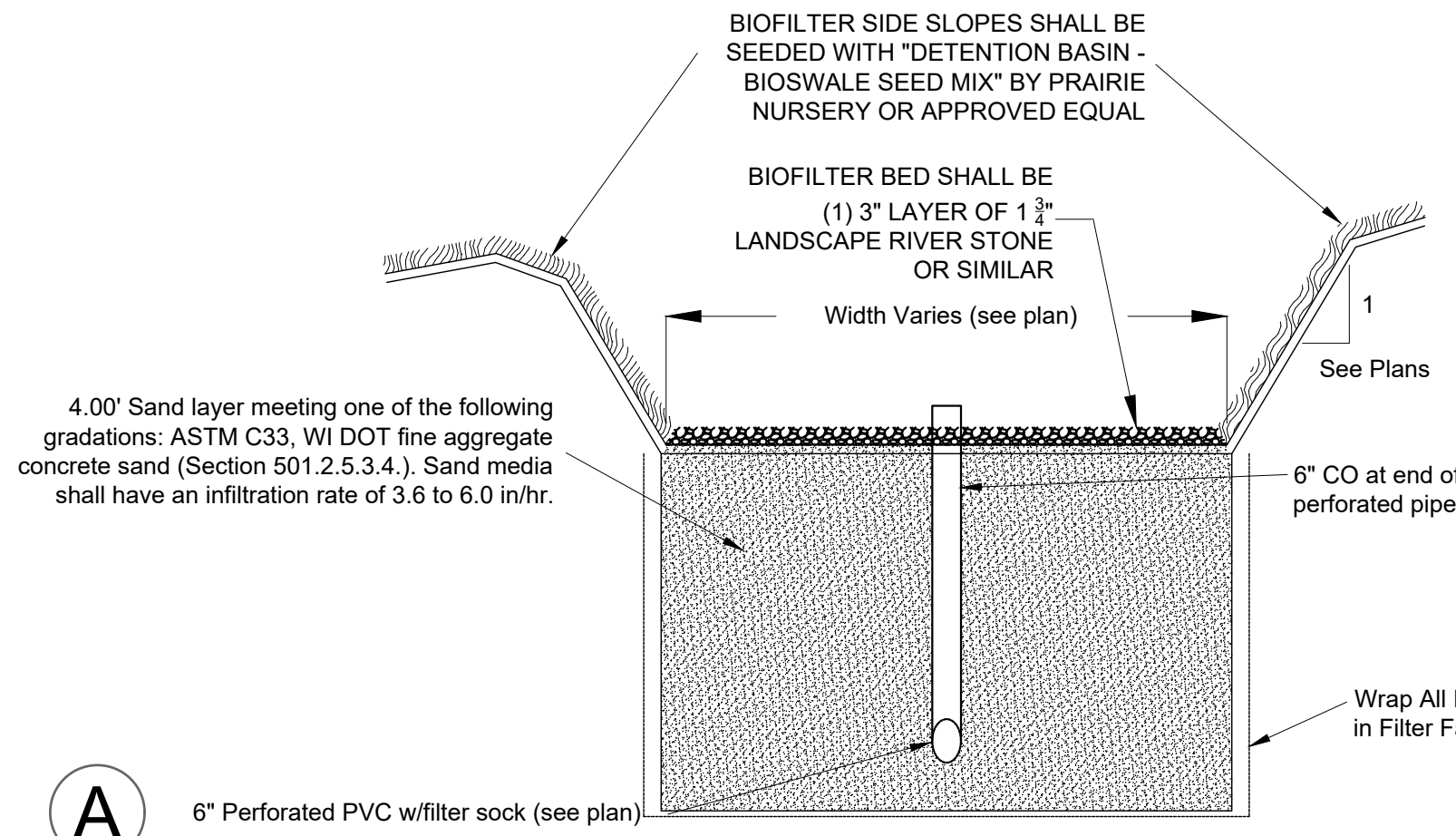
**C601**

© 2022 Epstein Uhen Architects, Inc.

**MACH IV**  
ENGINEERING • SURVEYING • ENVIRONMENTAL

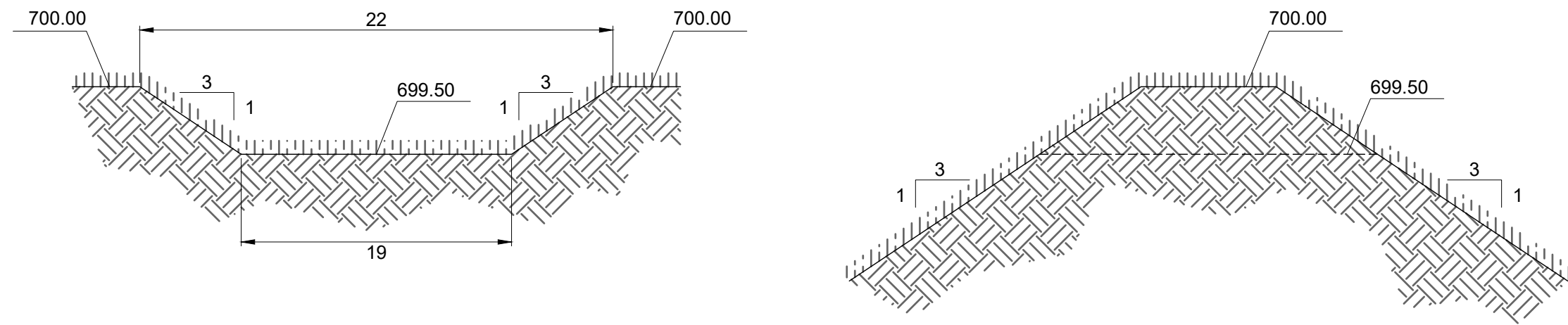
2260 Salscheider Court Green Bay, WI 54313  
PH: 920-569-5765; Fax: 920-569-5767  
www.mach-iv.com  
Project Number: 1771-05-22

E



**TYPICAL BIOFILTER CROSS SECTION**

D



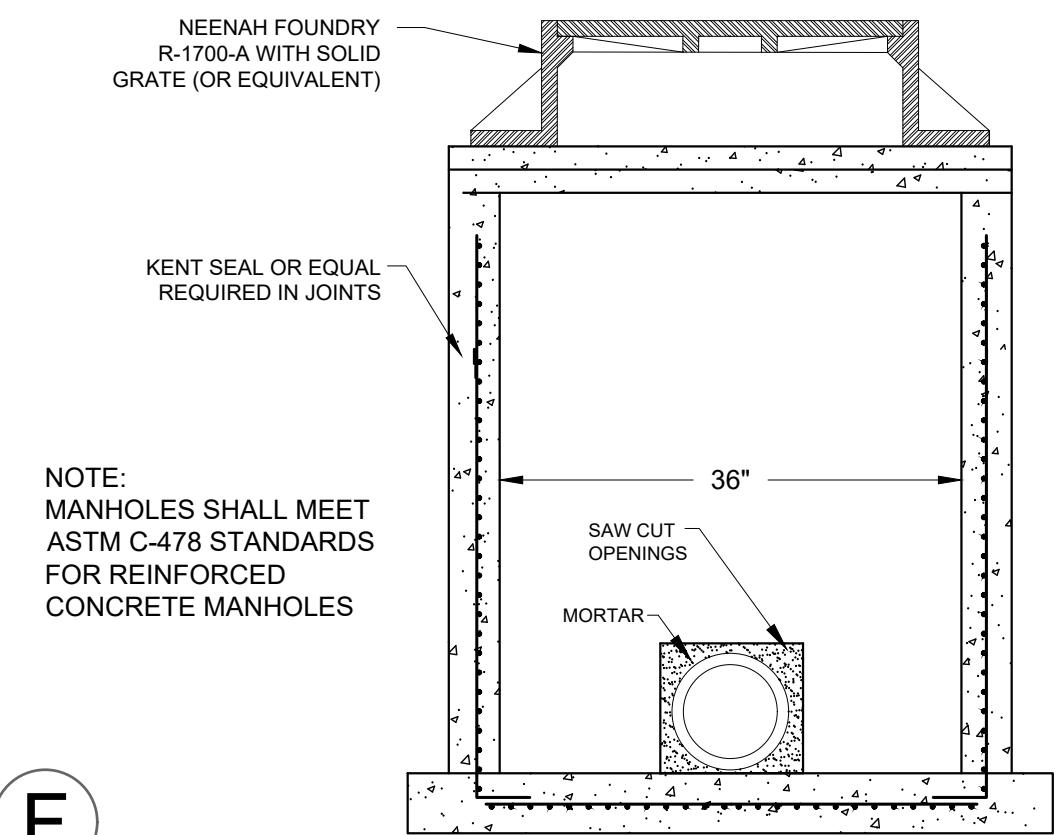
**TRANSVERSE X-SECTION**

**LONG. X-SECTION**

SCALE: N.T.S.

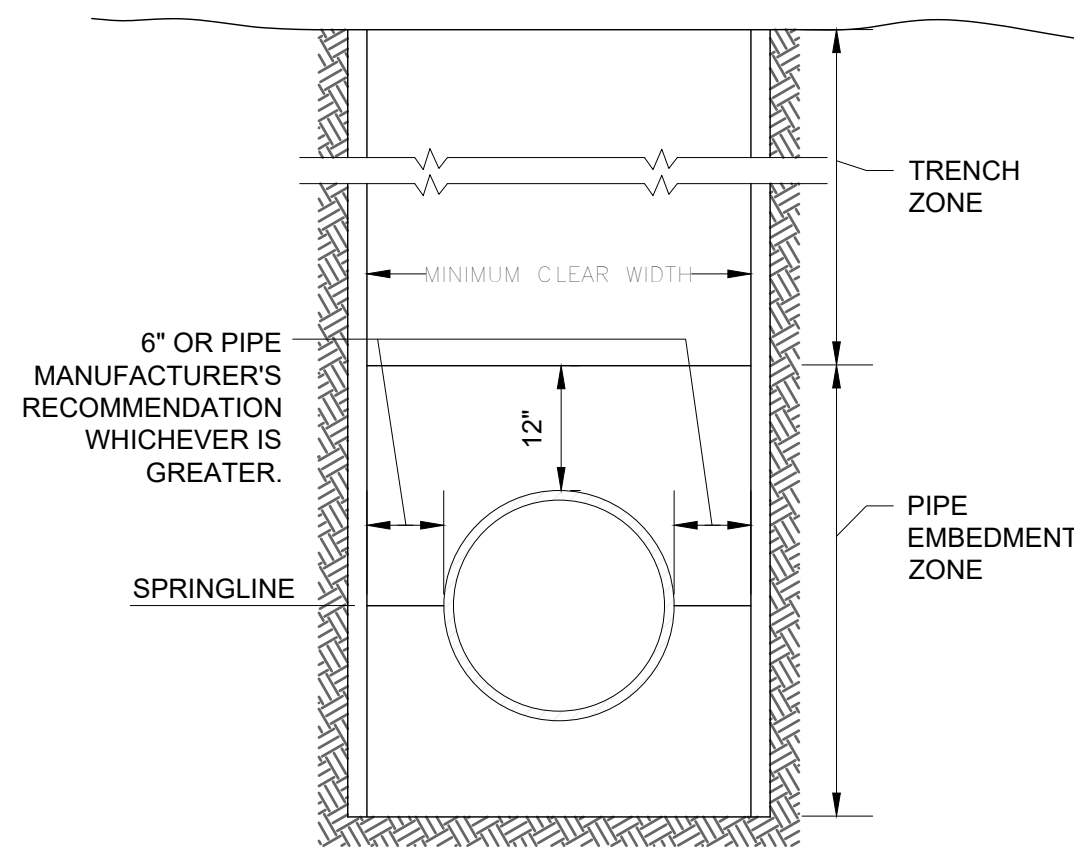
**STORM WATER EMERGENCY OVERFLOW WEIR**

C



**STORM SEWER MANHOLE (36" DIA.)**

G



**STANDARD PIPE BEDDING DETAIL**

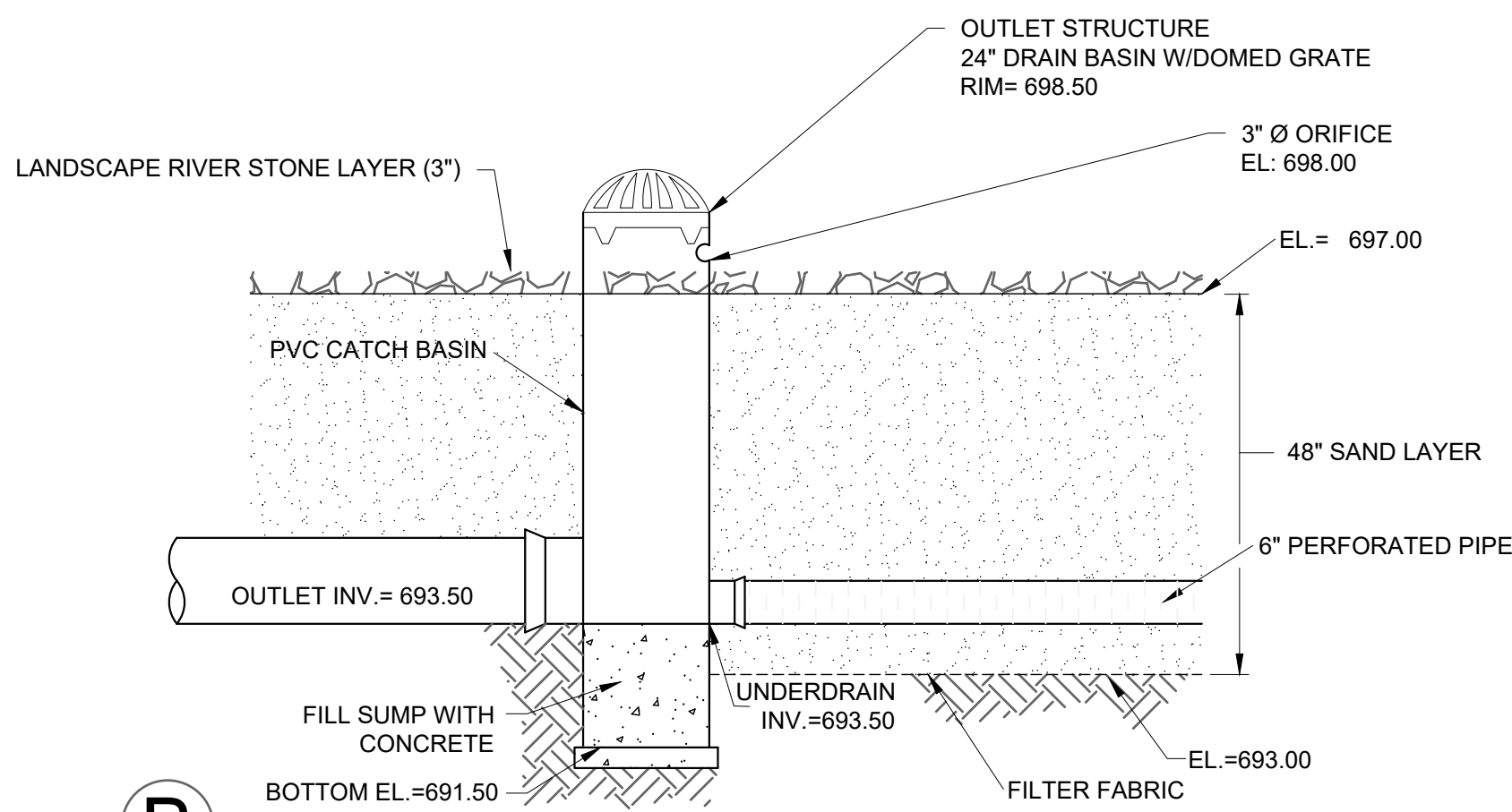
B

A

BIOFILTER CONSTRUCTION SEQUENCING AND OVERSIGHT

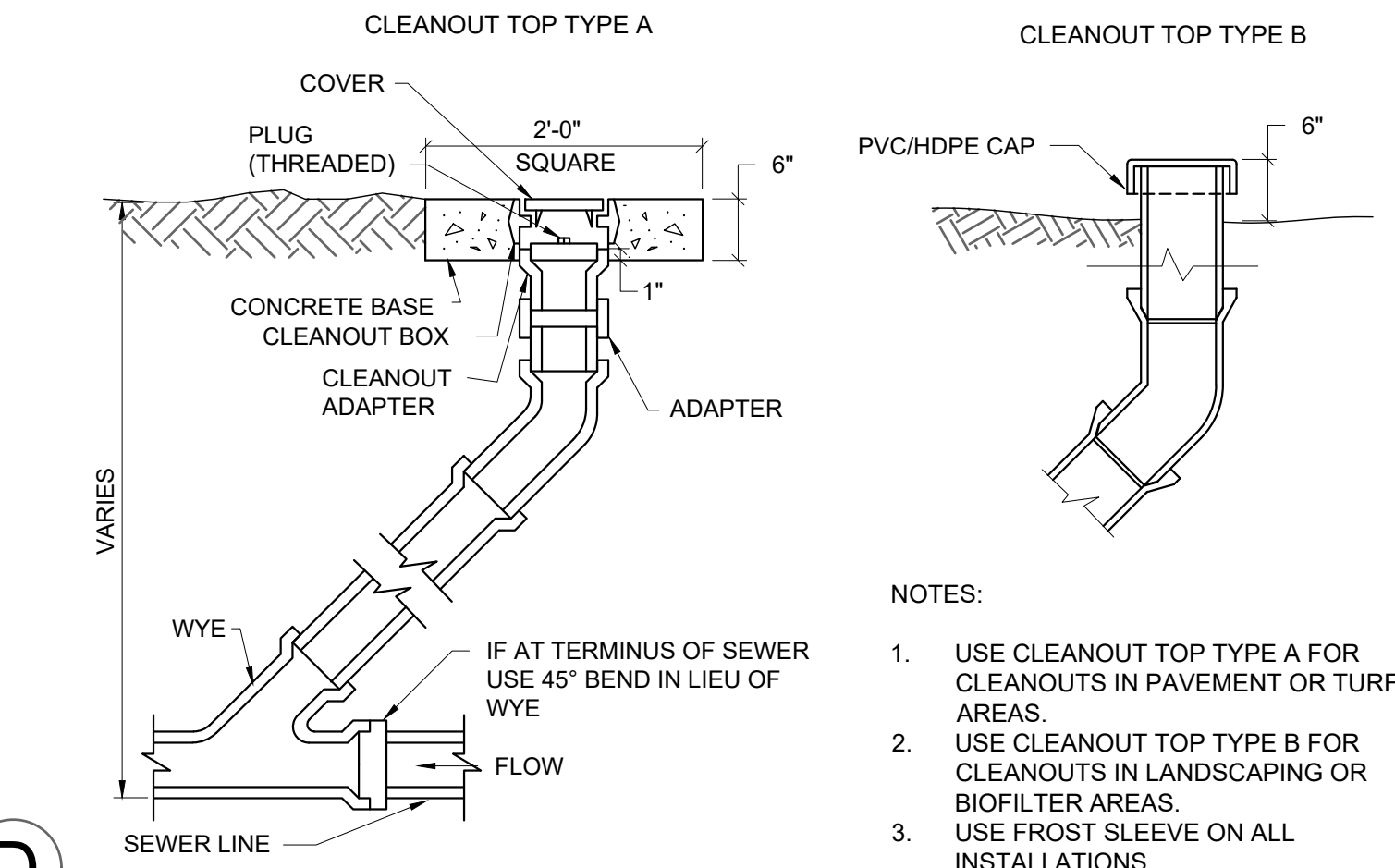
- A person trained and experienced in the construction, operation and maintenance of infiltration devices shall be responsible for construction of the device. The following apply:
  1. Construction Site Stabilization - Construction site runoff from disturbed areas shall not be allowed to enter the bioretention device. Runoff from pervious areas shall be diverted from the device until the pervious areas have undergone final stabilization.
  2. Suitable Weather - Construction shall be suspended during periods of rainfall or snowmelt. Construction shall remain suspended if ponded water is present or if residual soil moisture contributes significantly to the potential for soil smearing, clumping or other forms of compaction.
  3. Compaction Avoidance - Compaction and smearing of the soils beneath the floor and side slopes of the bioretention area, and compaction of the soils used for backfill in the soil planting bed, shall be minimized. During site development, the area dedicated to the bioretention device shall be cordoned off to prevent access by heavy equipment. Acceptable equipment for constructing the bioretention device includes excavation hoes, light equipment with turf type tires, marsh equipment or wide-track loaders.
  4. Compaction Remediation - If compaction occurs at the base of the bioretention device, the soil shall be refractured to a depth of at least 12 inches. If smearing occurs, the smeared areas of the interface shall be corrected by raking or roto-tilling.

B



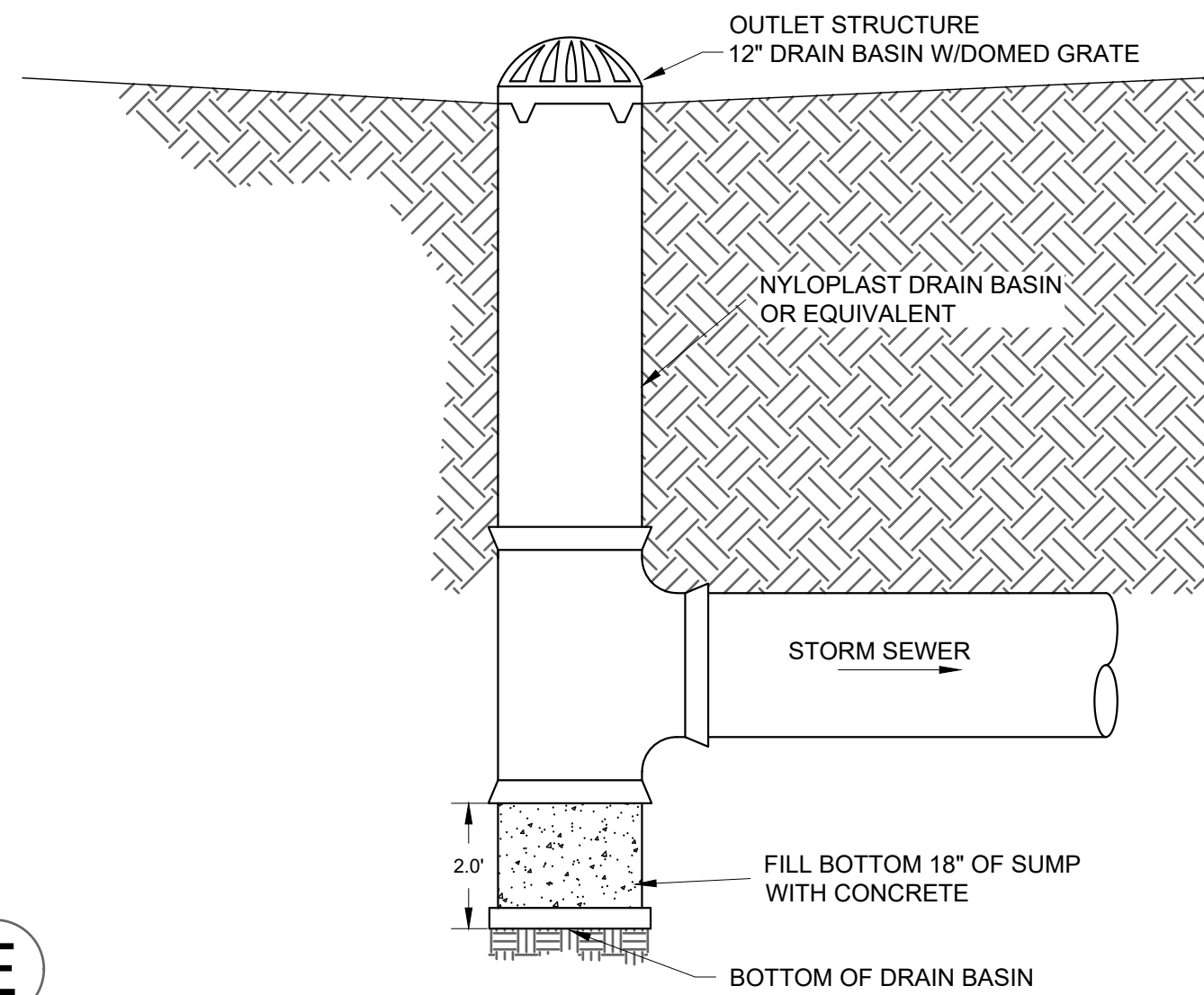
**BIOFILTER OUTLET STRUCTURE**

D



**CLEANOUT**

E



**YARD DRAIN**



PROJECT INFORMATION

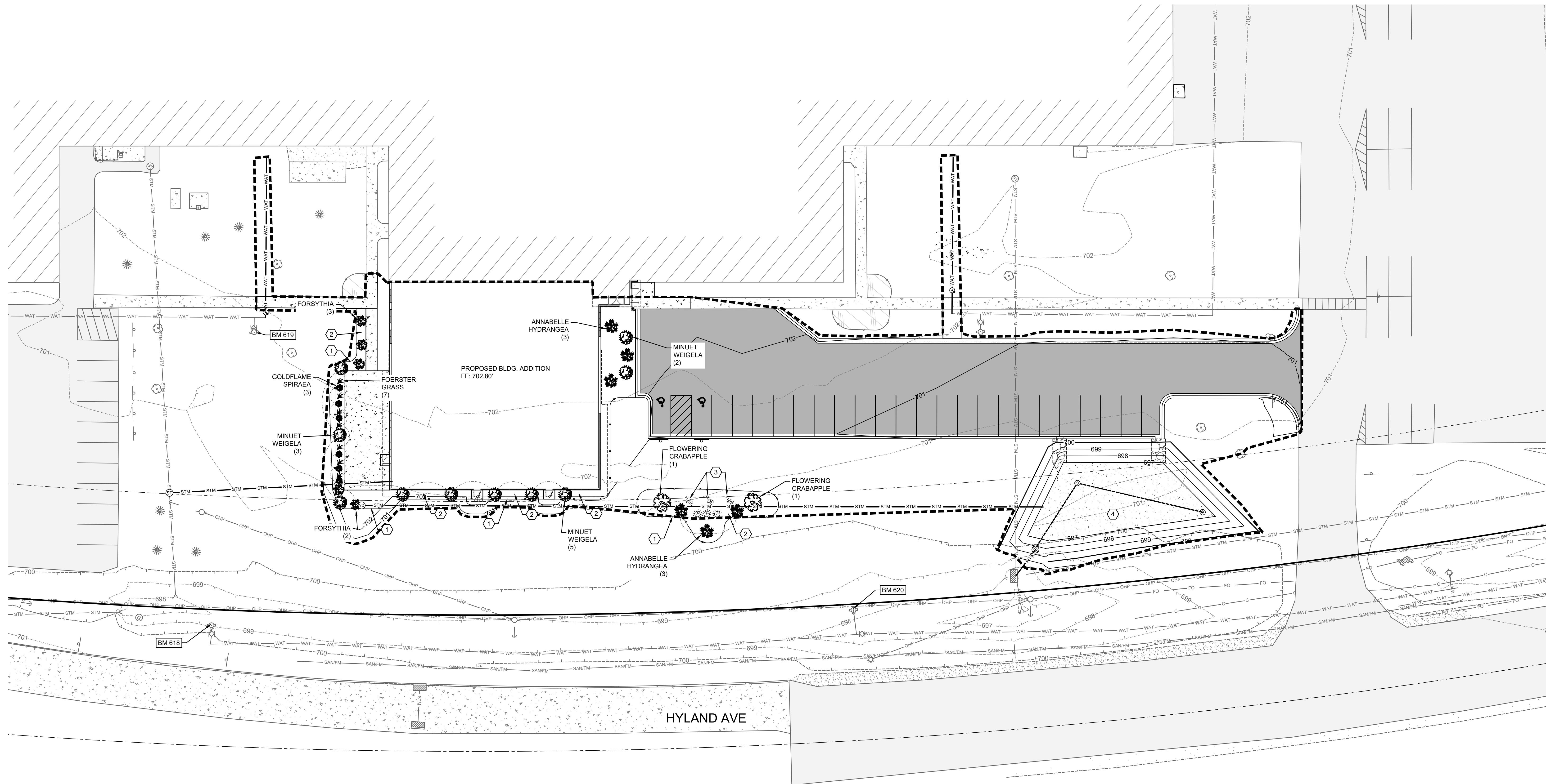
Bassett Mechanical  
Office Addition

1215 Hyland Ave.  
Kaukauna, WI 54130

ISSUANCE AND REVISIONS

DATE	DESCRIPTION
11/3/2022	CITY SUBMITTAL

KEY PLAN



SHEET KEY NOTES:

- PROFESSIONAL GRADE EDGING
- MATCH EXISTING STONE WITH WEED BARRIER FABRIC
- NEW FLAG POLE (3)
- BIOFILTER; SEE DETAIL A SHEET C601

PLANT TABLE

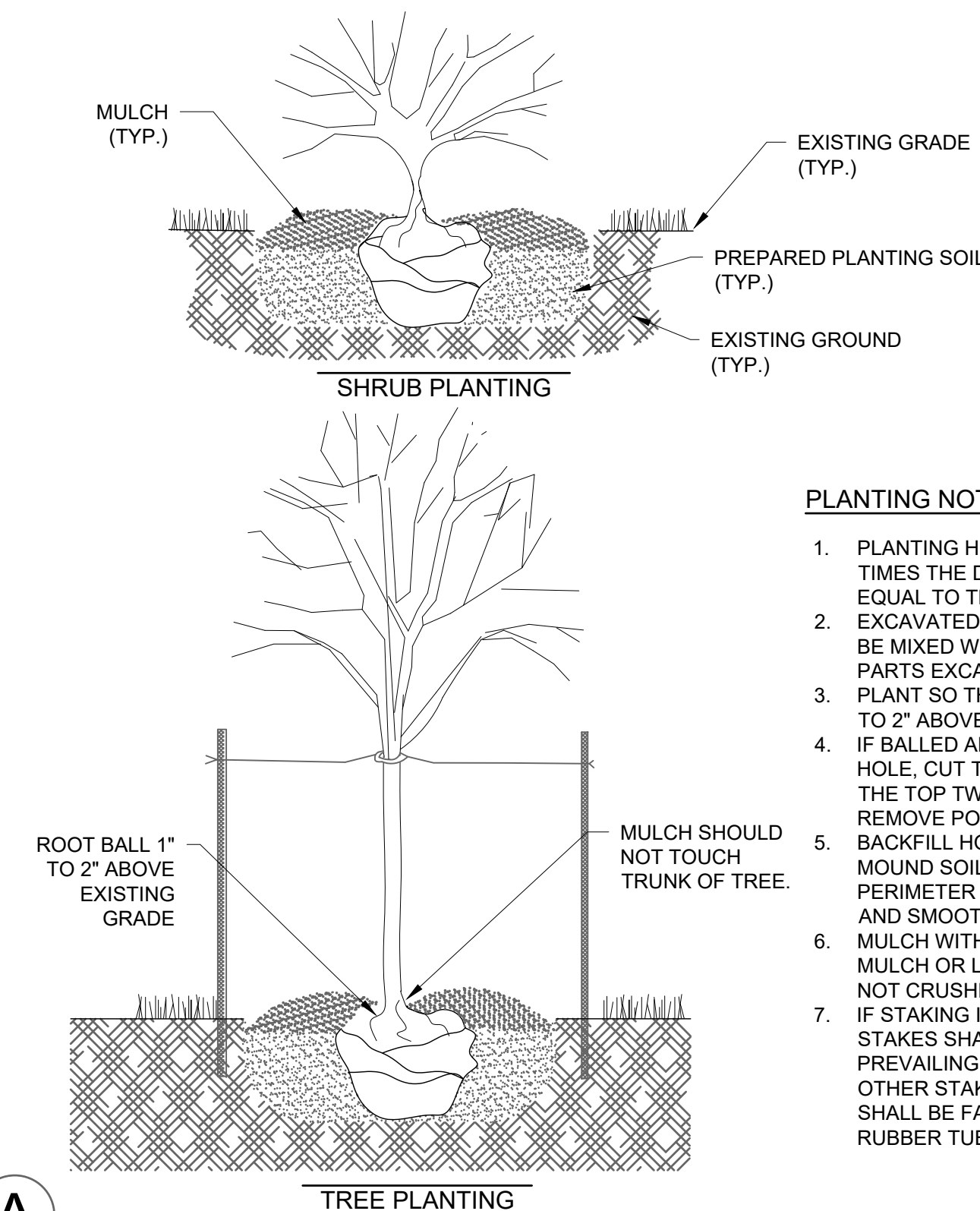
SYMBOL	COMMON NAME	SCIENTIFIC NAME	QUANTITY	SIZE
	FLOWERING CRABAPPLE	MALUS 'ROSACEAE'	2	1 1/4"
	ANNABELLE HYDRANGEA	HYDRANGEA ARBORESCENS 'ANNABELLE'	6	3 GAL.
	GOLDFLAME SPIRAEA	SPIRAEA X BUMALDA 'GOLDFLAME'	6	3 GAL.
	MINUET WEIGELA	WEIGELA FLORIDA 'MINUET'	10	3 GAL.
	FOERSTER GRASS	CALAMAGROSTIS X ACUTIFLORA	7	1 GAL.
	FORSYTHIA	FORSYTHIA	5	3 GAL.

LANDSCAPE NOTES

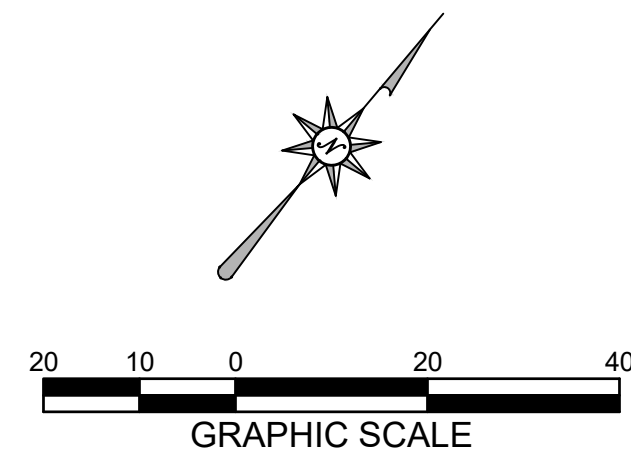
- DIAMETERS OF PLANT MATERIALS AS DRAWN ARE REPRESENTATIVE OF PLANTS AT OR NEAR MATURITY RATHER THAN AT INITIAL PLANTING SIZES.
- THE PLANT LIST IS INTENDED AS A GUIDE FOR THE CONTRACTOR. IN THE EVENT OF DISCREPANCY BETWEEN THE NUMBER OF PLANTS ON THE PLANT LIST AND ON THE DRAWING, THE GREATER NUMBER SHALL APPLY.
- ADJUSTMENTS IN LOCATIONS OF PLANT MATERIALS MAY BE NECESSARY DUE TO NEW OR EXISTING UTILITIES OR SITE OBSTRUCTIONS. REVIEW WITH ARCHITECT BEFORE ADJUSTMENTS ARE MADE.
- ALL SHRUBS OCCURRING IN CONTINUOUS ROW OR FORMAL ARRANGEMENT SHALL HAVE UNIFORM HEIGHT, SPREAD AND HABIT OF GROWTH. FOR GROUND COVER LOCATIONS, FILL AREA WITH QUANTITY OF PLANTS DESIGNATED; EVENLY SPACED.
- A MINIMUM OF 12" DEPTH OF 50% TOPSOIL AND 50% COMPOST SHALL BE PLACED IN ALL BED AREAS BY THE CONTRACTOR PRIOR TO PLANT INSTALLATION.
- MULCH TREES WITH MIN. 3" DEPTH OF GRAVEL OR HARDWOOD MULCH AS NOTED ON PLAN AND PER DETAILS. MULCH SHALL EXTEND IN A CONTINUOUS LAYER WITHIN PLANTING BEDS FROM FACE TO FACE OF SITE STRUCTURES - WALKS, BUILDING, OR OTHER PLANT BED LIMITS.
- PROTECT EXISTING LAWN AREAS; REPAIR ANY CONTRACT RELATED DAMAGE TO LAWN AREAS.
- THE CONTRACTOR SHALL MAINTAIN ALL PLANTS AND BEDS FOR A 60 DAY PERIOD AFTER ACCEPTANCE OF THE WORK BY THE ARCHITECT. THIS INCLUDES REGULAR WATERING, WEEDING AND MOWING.
- THE CONTRACTOR SHALL GUARANTEE ALL PLANT MATERIALS FOR ONE YEAR FROM DATE OF ACCEPTANCE. BEFORE END OF WARRANTY PERIOD CONTRACTOR SHALL REPLACE ALL TREES, SHRUBS OR PLANTINGS NOT ALIVE OR IN A HEALTHY GROWING CONDITION.
- SEED ALL DISTURBED AREAS WITH Wdot No. 40 GRASS MIX.

PLANTING NOTES:

- PLANTING HOLE SHALL BE A MINIMUM OF TWO TIMES THE DIAMETER OF THE ROOT BALL, AND EQUAL TO THE DEPTH OF THE ROOT BALL.
- EXCAVATED SOIL FROM PLANTING HOLE SHALL BE MIXED WITH 1 PART POTTING SOIL TO 2 PARTS EXCAVATED SOIL.
- PLANT SO THAT THE ROOT COLLAR WILL BE 1" TO 2" ABOVE EXISTING GRADE.
- IF BALLED AND BURLAPED, PLACE PLANT IN HOLE, CUT THE BAILING TWINE, AND PEEL BACK THE TOP TWO THIRDS OF BURLAP. IF POTTED REMOVE POT, AND PLACE PLANT INTO HOLE.
- BACKFILL HOLE WITH PREPARED SOIL, AND MOUND SOIL 2" TO 3" HIGH IN A RING AT THE PERIMETER OF THE EXCAVATED HOLE. WATER AND SMOOTH RING PRIOR TO MULCHING.
- MULCH WITH 3" OF SHREDDED HARDWOOD MULCH OR LANDSCAPE STONE (RIVER ROCK, NOT CRUSHED STONE).
- IF STAKING IS REQUIRED FOR TREES TWO STAKES SHALL BE USED ONE ON THE PREVAILING WIND SIDE OF THE TREE, AND THE OTHER STAKE ON THE OPPOSITE SIDE. STAKES SHALL BE FASTENED TO THE TREE USING RUBBER TUBING, OR NYLON STRAPPING.



PLANTING DETAIL



SHEET INFORMATION

PROGRESS DOCUMENTS  
NOT FOR CONSTRUCTION

These documents reflect progress and intent and may be subject to change, including additional detail. These are not final construction documents and shall not be used for final bidding or construction-related purposes.

PROJECT MANAGER PM  
PROJECT NUMBER 922140

**MACH IV**  
ENGINEERING • SURVEYING • ENVIRONMENTAL

2260 Salscheider Court Green Bay, WI 54313  
PH: 920-569-5765; Fax: 920-569-5767  
www.mach-iv.com  
Project Number: 1771-05-22

LANDSCAPE PLAN

**L100**