

February 28, 2022

Agenda Item #2d

Authorization to Bid Project 9-22, 1000 Islands Steps to Upper Woods

Background

The 1000 Islands is seeking to contract for the installation of new steps leading into the upper woods as well as a set of steps to the north of County Highway Z, heading down toward the river. The existing steps are old railroad ties which are deteriorating and in need of significant repair. Apple Valley Landscaping LLC has been helping with the planning as they had recently completed a similar project in Kimberly's Sunset Park. 1000 Islands has received some restricted funds that will cover most of the project cost. There will be approximately 104 total steps installed and 6 crushed gravel landings.

Photos of the proposed concrete step treads and a location map are enclosed.

Recommended Action

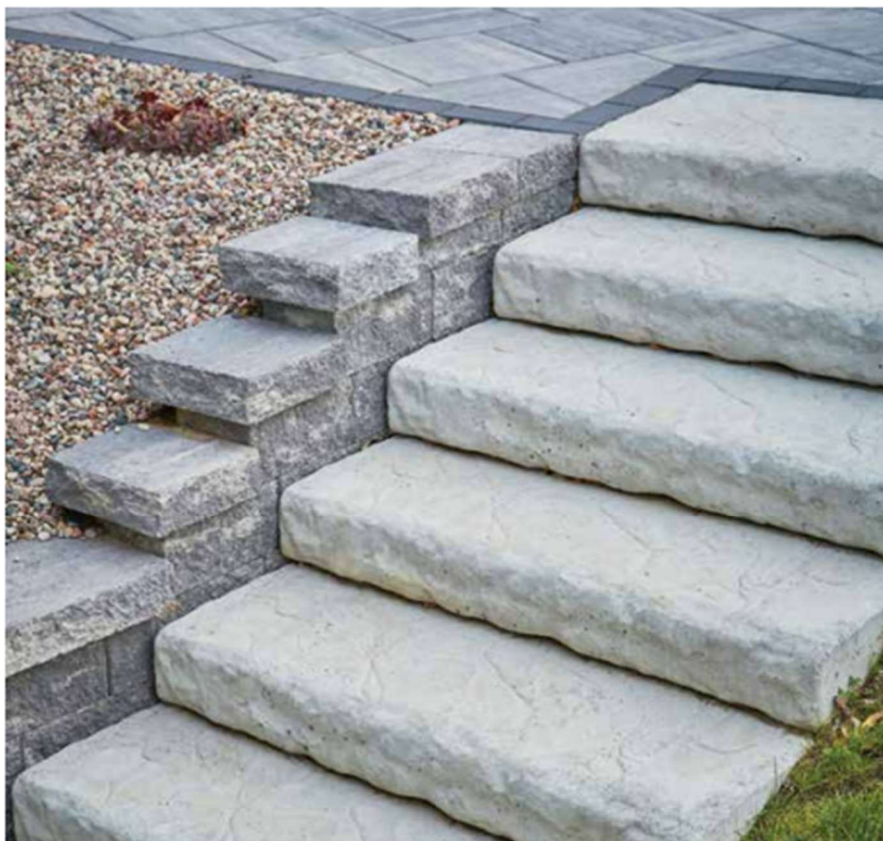
Authorize the Engineering Department to seek bids for Project 9-22, 1000 Islands Steps to Upper Woods.



Oversize Landscape

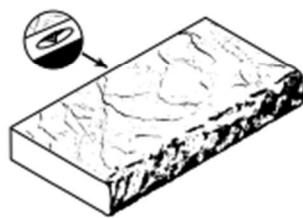
STEP UNITS

Our Oversize Landscape Step Units are manufactured with uniform heights and naturally textured surfaces, for enhanced pedestrian comfort and safety. Their larger scale also covers more square footage than alternative step options, speeding installation and reducing labor costs.



Oversize Landscape Step Units – GRAY color

D x H x L
(Nominal Size) • Inches



25 x 6 1/4 x 48



Oversize Landscape Step Units – GRAY color