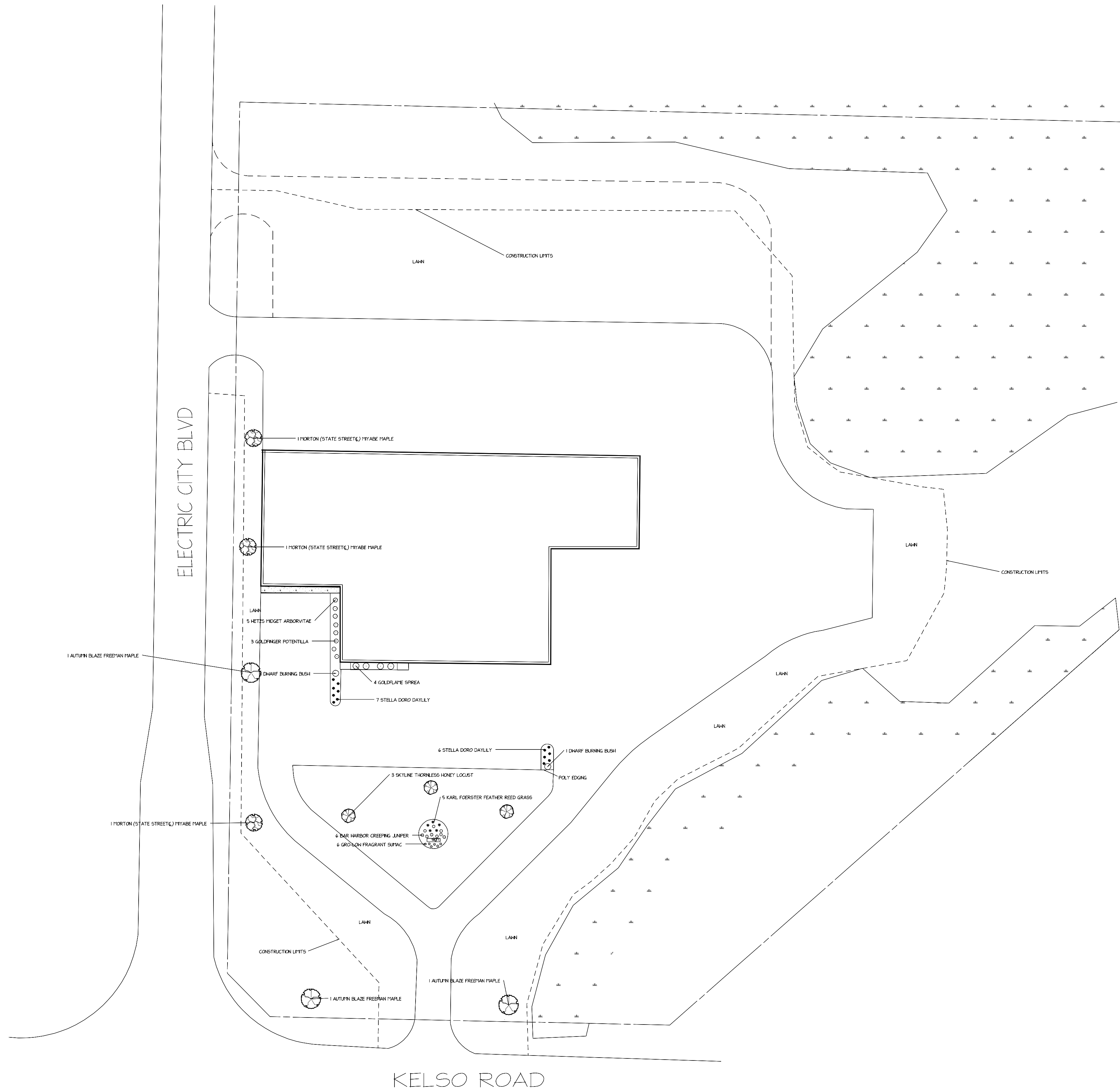


Qty	Botanical Name	Common Name	Size/Condition	Remarks
Trees				
3	Acer miyabe Morton (State Street)	MORTON (STATE STREET) HYABE MAPLE	2'-2 1/2" dbh	
3	Acer x Freemanii 'Jefferson'	AUTUMN BLAZE FREEMAN MAPLE	2' 1/2"-3" dbh	
3	Gladiolus incauthus f. nemis 'Skyline'	SKYLINE THORNLESS HONEY LOCUST	2'-2 1/2" dbh	
Shrubs				
2	Euonymus alatus 'Compactus'	OHARF BURNING BUSH	18"-24" potted	
3	Potentilla fruticosa 'Goldfinger'	GOLDFINGER POTENTILLA	18"-24" potted	
4	Rhus aromatica 'Gro-Lon'	GRO-LON FRAGRANT SUMAC	18"-24" potted	
4	Spiraea japonica 'Goldflame'	GOLDFLAME SPIREA	18"-24" potted	
5	Thuja occidentalis 'Hetz Midget'	HETZES HEDGET ARBORVITAE	18"-24" potted	
Ornamental Grasses				
5	Calamagrostis x acutiflora 'Karl Foerster'	KARL FOERSTER FEATHER REED GRASS	1 gal	
Perennials and Annuals				
8	Hemerocallis 'Stella d'Oro'	STELLA DORO DAYLILY	1 gal	
Groundcovers				
6	Juniperus horizontalis 'Bar Harbor'	BAR HARBOR CREEPING JUNIPER	5 gal	

LAWN AREAS TO BE SEEDED WITH HERITAGE LAWN SEED AND STRAW MULCH
 PLANTING BEDS TO BE 1 1/2" MISSISSIPPI STONE OVER FABRIC NEED BARRIER
 PLANTING BEDS TO BE EDGED WITH COMMERCIAL GRADE POLY EDGING

REQUIREMENTS

9 TREES REQUIRED
 9 TREES PROVIDED



LOCATION
 CITY OF KAUKAUNA

NOTES

REVISIONS

SCALE 1" = 40'

