



# MEMO

## PLANNING & COMMUNITY DEVELOPMENT

To: Plan Commission  
From: Lily Paul, Associate Planner  
Date: May 16, 2022  
Re: Rezoning Request – 2928 & 2930 Lawe St; DrainSupply Properties, LLC

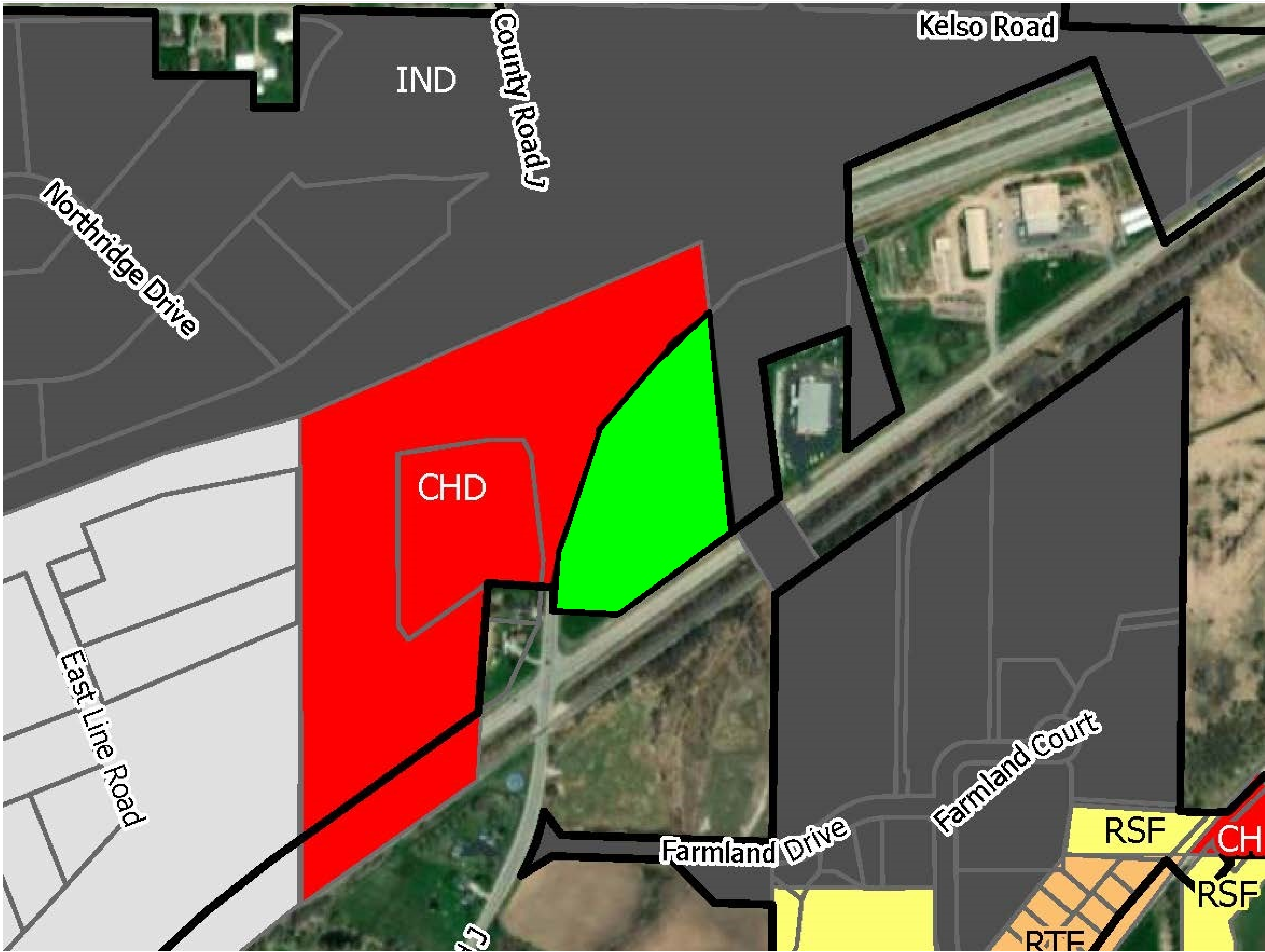
Steven Lowney, owner, is requesting to rezone parcels 322097201 and 322097202 to Industrial (IND). These parcels are located at 2928 & 2930 Lawe Street and are currently zoned Commercial Highway (CHD). The zoning of the parcels to the North, East and South are zoned Industrial. This rezone would allow for outdoor storage of materials, and allow for potential future manufacturing for the business DrainSupply Properties, LLC.

Please see attached maps for surrounding zoning and location reference.

**Staff Recommendation:**

Approval of the rezoning of parcels 322097201 and 322097202, located at 2928 & 2930 Lawe Street from Commercial Highway District (CHD) to Industrial (IND) and recommend the same to council.





# City of Kaukauna Zoning Map

**Current Zoning:**

Commercial Highway (CHD)

**Proposed Zoning:**

Industrial (IND)

**Parcel Number(s):**

322097201  
322097202

**Acerage:**

7.27

**Legend**

- Residential Single-Family (RSF)
- Residential Two-Family (RTF)
- Residential Multi-Family (RMF)
- Commercial Core (CCD)
- Commercial Highway (CHD)
- Institutional (IT)
- Industrial (IND)
- Industrial Park (IPD)
- Conservancy
- PROPOSED REZONE SITE

