

PROPOSAL FOR
KAUKAUNA PUBLIC LIBRARY
SPACE NEEDS STUDY



FEHDESIGN.COM



FEH DESIGN
ARCHITECTURE / ENGINEERING / INTERIORS

TABLE OF CONTENTS

01 CAPACITY TO PERFORM

COVER LETTER

NUMBER OF YEARS IN BUSINESS

PROJECT UNDERSTANDING

PLAN OF WORK

COST AND FEE STRUCTURE

LITIGATION

02 PERSONNEL

KEY PERSONNEL

OUTSIDE CONSULTANTS

03 EXPERIENCE AND REFERENCES

PROJECT EXPERIENCE





Ms. Ashley Thiem-Menning
Library Director
Kaukauna Public Library
207 Thilmany Rd. Ste 200
Kaukauna, WI 54130

Re: RFP; Facilities Assessment

Dear Ms. Thiem-Menning,

The years 2020 and 2021 challenged public libraries as never before as they pivoted to curbside service, limited occupancy in the building, and virtual programming to serve the community. As we move past the pandemic, we believe public libraries will return to be the vibrant, quiet, open, collaborative, focused, accessible, relaxing, energetic, and safe places the public expects of today's libraries. On any given day, libraries provide spaces for gatherings, tutoring, small business conferences, community meetings, and group studying. They provide makerspaces for inspiring innovation, technology access and career training, children's programs, adult literacy programs and a myriad of other services.

FEH Design, with its many years of experience in library design, will help you assess the space and layout of your current facility and provide a 20-year plan for one of the most important facilities in your community. Our unique approach incorporates a staff librarian and library architect in the assessment process to assure your library provides the optimal use of physical space and flexibility necessary to provide the range of services important to your community. Gregg Baum, a library architect, has helped many municipalities build a public library and create community. Our staff librarian, Bill Wilson will work with Kaukauna staff and the Kaukauna Public Library Board to determine the optimal use of physical space and discuss public service models.

FEH Design is proud to share a number of successful library assessments that we hope may inspire you to consider how we could help you shape the future of your library. Our recent studies with the Burlington Public Library, Lake Geneva Public Library, Sun Prairie Public Library, Pauline Haass Public Library, and L.D. Fargo Public Library are a very close match to your project. We encourage you to contact any of our references about our relationship, our process, and study outcomes. Our references are included later in the proposal.

Please feel free to contact us by phone at 262.968.2055 if you would like additional information or if you have questions regarding the information provided.

We look forward to the opportunity to work together to achieve your mission to educate, inspire, and connect individuals and the community.

Sincerely,
FEH Design



Kevin Eipperle, AIA, LEED AP
Principal In Charge
kevine@fehdesign.com



Gregg Baum, AIA LEED AP, WLA
Library Expert
greggb@fehdesign.com



01 / CAPACITY TO PERFORM

CONTACT INFO:

Kevin Eipperle, AIA, LEED AP

kevine@fehdesign.com

563 583 4900 P

120+

YEARS IN BUSINESS

PROJECT UNDERSTANDING

We understand that this study aims to determine how much space is required to meet the emerging and future needs of library users and determine the best path forward, whether it be on the Grand KaKalin site or another site.

Traditional public library space needs planning has been highly dependent upon “formulaic” approaches based on service population and collection size. While this approach has served communities well for decades, changes in technology, community dynamics, and service delivery mechanisms are beginning to make these “rule-of-thumb” space needs projections obsolete and not last for 20 years.

We fervently believe that collections of materials will continue to play a major role in what libraries do over the next 20 years; however, improvements in interlibrary resource sharing, the impact of digital resources and downloadable content, as well as the library’s significance as a source of programming for people of all ages and as a center of community life must also be considered.

Consequently, FEH Design proposes to examine the public library facility needs for the Kaukauna Public Library using a “from-the-ground-up” functional approach. One might think of it as a space needs version of the zero-based budgeting methodology. In short, we intend to apply a

functional analysis approach based on the community’s and library’s strategic priorities rather than merely the application of “top-down” measures of population and incremental growth of existing collections.

This functional analysis will also include an examination of new service models for circulation services and reference services that are beginning to emerge in exemplary libraries in the U.S., Canada, Scandinavia, and, in fact, throughout the developed world. While traditional methodologies of allocating library spaces will not be abandoned, they will be used more as an adjunct “reality check” rather than as the primary methodology. The consultants will closely examine what the library is trying to accomplish and the kinds of spaces that are needed and would be appropriate in each instance.

Our space needs assessment will also entail a careful examination of how new and emerging technologies might impact library staff as well as current and potential users. The space needed to fully implement technologies will be included in addition to consideration of the impact of more library visitors accessing the library’s wireless network and digital resources using their own handheld devices.

FEH Design strongly advocates for the “form follows function” philosophy in library design. We believe that

library “facilities” “facilitate.” That is, library spaces must enable a library to carry out its mission. We believe that before a determination can be made about how spaces should be allocated, the library planners (the consultants, the library administration, and the Library Board/Planning Committee) need to have a good understanding of what they are trying to accomplish in a library facility designed for the mid-21st century.

Consequently, the consultants plan to begin the project with a meeting with the major stakeholders to discuss the library’s current mission and newly adopted 2022-2026 strategic plan and to determine how the library needs and wants to change to meet the expectations of the public. We anticipate that the session will involve library administration and key staff as well as library board members.

PLAN OF WORK

The demographic profile of the Kaukauna community shows that it is growing and changing in many positive ways. The Kaukauna Public Library, as an integral and essential component of the community, is positioning itself to meet the needs of not just the Kaukauna community of today but of the emerging greater Fox Valley community of the future. To this end, the library has taken several important steps.

In 2021, the library conducted an extensive community survey in an effort to better understand the wants and needs of the people who reside in the area. A second component is the library’s 2022 - 2026 Strategic Plan, which clearly identifies both the library’s core values and a set of dynamic steps the library needs to take to ensure that it remains a relevant and valued community resource. The plan’s five goals: building collections, expanding access, increasing engagement, advocacy, and creating connections, are clearly tied to the community survey and focus groups. The Space Needs Assessment called for in the Request for Proposal (RFP) grows directly out of this statement. The Kaukauna Public Library is seeking to understand the types and characteristics of the physical spaces that will be necessary to meet the community’s growing needs as well as the appropriate sizes of required spaces that will be essential to meet community needs for an extended period of time.

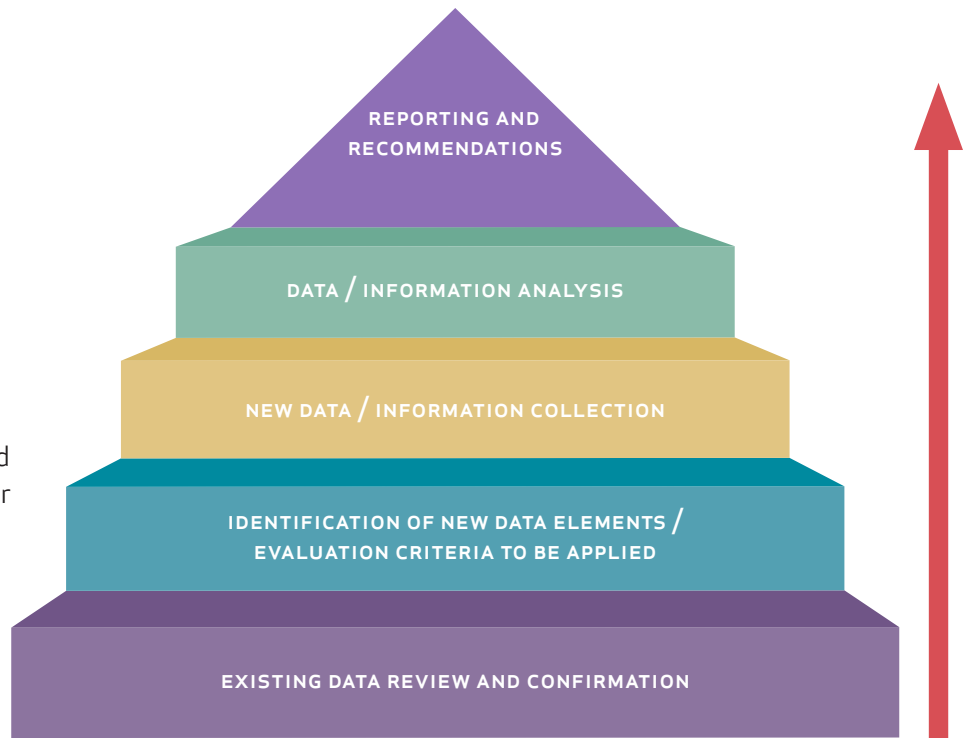
The library’s approach to facility needs mirrors FEH Design’s philosophy. At FEH, we believe that library facilities are built to facilitate; that is, the reason that communities invest in public libraries is inherently tied to the activities that will take place in those spaces. We design libraries to enable staff to deliver services that are desired and valued by the public. The Kaukauna Library moved to the former Eagle Mills building six short years ago and we can review how decisions unfolded and which assumptions and conclusions were correct and which failed to hit the mark.

If FEH is selected to carry out this Space Needs Study, we believe that our challenge is to develop an assessment that directly addresses the 20-year space needs requirement.

“We design libraries to enable staff to deliver services that are desired and valued by the public.”

THE WORKPLAN

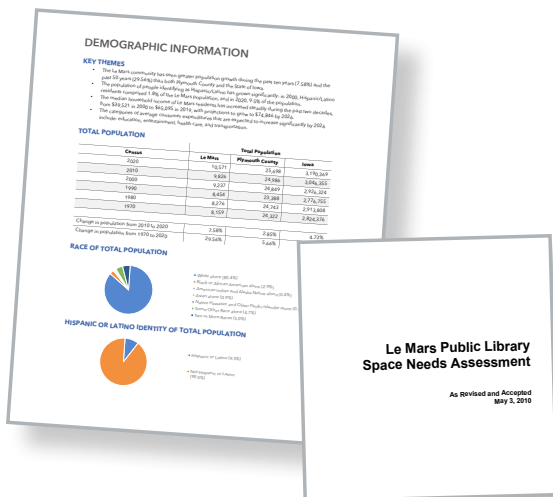
FEH Design envisions the Kaukauna project as being composed of five distinct phases. These phases are summarized in the pyramid graphic shown to the right. Work will begin at the very general level at the base of the pyramid (Existing Data Review and Confirmation) and will gain greater and greater focus on actionable recommendations as the work proceeds to the Reporting and Recommendations phase.



Phase 1. Existing Data Review and Confirmation

Planning is a lot like a journey: you have to start where you are. Consequently, it is important to know where the library is currently in terms of services and facilities. FEH will tour the library, meet with the director and staff to determine inadequacies, and use its knowledge of the physical facility but will not assume that it has a comprehensive understanding of the library's current service models.

Phase 1 will also include a review of the Kaukauna area demographic profile, the 2021 Community Feedback Survey, statistics from the Kaukauna Library and peer institutions, and the 2022 - 2026 Strategic Plan. The "confirmation" portion of this phase is intended to make sure that we truly understand not just the words but the motivation behind the contents of the strategic plan. We believe that the recommendations must align with the strategic plan and that the space must reflect the library's commitment to carrying its plan forward.



Phase 2. Identification of New Data Elements/ Evaluation Criteria to be Applied

FEH Design recognizes that evaluation and assessment involves more than simply the collection of data. Criteria need to be established to evaluate the data. Again, the library's Strategic Plan will be an essential component since it identifies outcomes that embody the criteria for success. We will constantly be asking ourselves and the key players from the library to help us fully understand the implications of the plan's components on the physical spaces that are desired.

Phase 3. New Data/ Information Collection

Our extensive experience planning library facilities enables us to ask the right questions! FEH Design has a unique space planning tool that allows us to have an in-depth interactive discussion with the library staff, library administration, and library board not just about what spaces are needed but about the characteristics of those spaces as well. Our planning tool provides the opportunity to apply differing levels of “user-friendliness” to collection spaces (elements such as width of aisles, height of shelving, shelf-loading, etc.), seating (size of seating, spacing to allow for privacy and physical distancing, etc.), staff spaces, technology spaces and so forth. The strength of the tool is that it provides instantaneous feedback in regard to the size implications of various decisions. FEH will work with the library to define and refine the kind of spaces that will both meet the community’s needs and offer the kind of user experiences that will bring people back to the library over and over again. We will run this space planning tool for the existing building as well as for a new building to highlight the differences between them.

Phase 4. Data Information Analysis

While this phase signals the turn toward the development of the final report, FEH regards the library as an active partner in this step in the process. Refinements and alternatives will be presented based on new service models that are being employed (some as a result of the COVID-19 pandemic), best practices, and concepts related to enhanced workflows. The discussion of the implementation of new and emerging technologies will be an integral part of this phase.

FEH Design's library space planning tool: a modern tool for today's libraries.

In an effort to assist libraries with identifying their specific programmatic space needs, our team of experts has developed a library space needs estimator worksheet.

The worksheet accounts for:

- Service Populations and Anticipated Growth
- Staff Size
- Inefficiencies in the existing building infrastructure
- Collections - Books, Picture Books, Magazines, Newspapers, Audiobooks, DVDs, CDs, and more
- User Friendliness - Aisle Size, Shelf Heights, ADA Compliance
- Technology
- Meeting Spaces
- Specialty Spaces - Coffee Bar, Art Gallery, Gift Shop, etc
- Seating
- Facility Staples - Restrooms, Lobby, Mechanical and Custodial Rooms, Data Closets, and more

We provide this worksheet as a key component of our planning process, where we can tailor the results in a curated way in response to the goals from your Strategic Plan and the criteria previously discussed. Our experienced staff facilitates an in-depth discussion as we complete the worksheet. It is a fun, interactive process for everyone!

Phase 5. Reporting and Recommendations

FEH Design will prepare an outline program document as part of the final report that is prepared for the Kaukauna Public Library. This outline will provide specific recommendations for the size and characteristics of somewhere in the neighborhood of forty or fifty functional areas. For example, information will be provided in regard to the space needed to house specific collections (Adult Non-Fiction, Children's Picture Books, etc.). The building program will also provide recommendations for the type and height of shelving appropriate in each area and the square footage needed to accommodate each collection.

The number of casual seats and study seats, the number and type of staff workstations, number and distribution of public computer workstations, etc. will be specified.

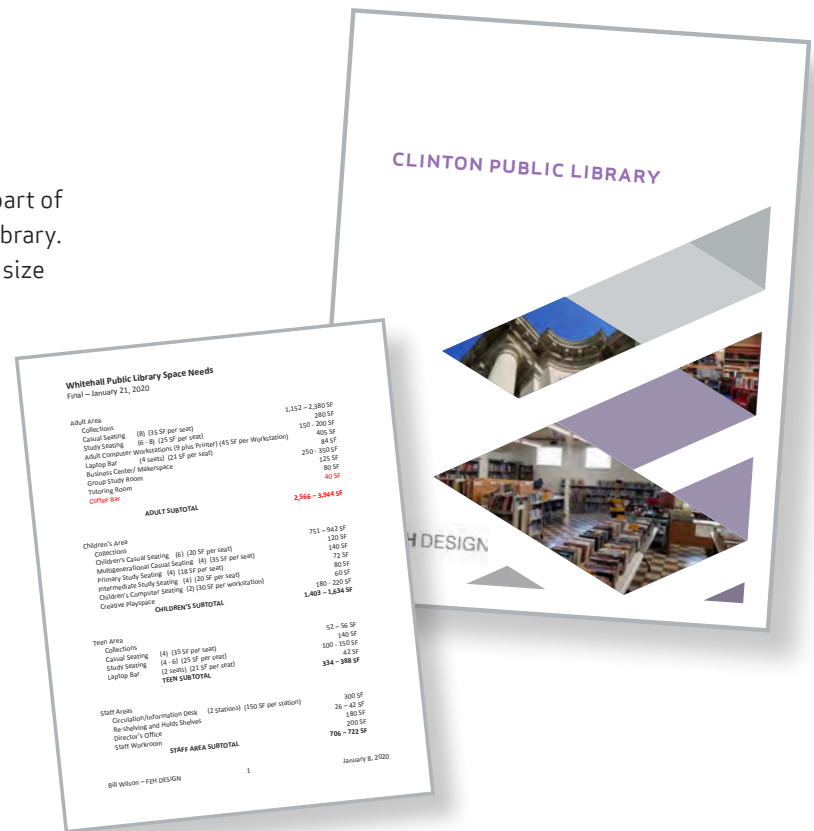
The outline program will first be presented in draft form. The first draft will be provided to the library at least two weeks in advance of a meeting with the library board to discuss the findings and recommendations. A second draft will be developed based on the input received from the board.

As requested in the RFP, the final written report will contain an executive summary, an explanation of the assessment process and conclusions, and all collected data as appendices. An in-person presentation of the final report shall be made to the library director and library board.

We will provide a "test fit" departmental layout for each requested building option and an opinion of probable cost.

SCHEDULE

| | |
|---------------------------------|----------------------|
| Project Commencement | June 8th, 2022 |
| Phase 1 and 2, 4 weeks total | July 8th, 2022 |
| Phase 3, 2 weeks | July 21st, 2022 |
| Phase 4, 3 weeks | August 11th, 2022 |
| Phase 5, 2 weeks | August 25th, 2022 |
| Revisions for Final deliverable | September 14th, 2022 |



COST AND FEE STRUCTURE

The cost to provide the services requested can be broken down into incremental costs as identified:

| | |
|--|---------|
| Phase 1 – Existing Data Review and Confirmation 2 weeks | \$1,000 |
| Phase 2– Identification of New Data Elements/Evaluation Criteria 1.5 weeks | \$2,500 |
| Phase 3 – New Data/Information Collection 2 weeks | \$2,500 |
| Phase 4– Data/Information Analysis 2-3 weeks | |
| 4 plan options based on existing drawings | \$3,000 |
| Phase 5 –Reporting and Recommendations 2 weeks | \$1,500 |
| Includes one in-person Library Board presentation @ 90 Percent completion 1 week | |

| | |
|--------------------------------------|-----------------|
| Total cost for basic services | \$10,500 |
|--------------------------------------|-----------------|

Plus reimbursables of approximately \$320

Optional Additional Services

We can provide you with the following optional additional services if you require further development for the Board or City Council.

| | |
|--|----------|
| 1. Rendered building floor plan for a selected option | \$1,000 |
| 2. Detailed floor plan layout with furniture and collections | \$1,500 |
| 3. Building animation for a selected option (2 min max) | \$12,000 |
| 4. Sketchy style concept rendering | \$3,000 |
| 5. Intercept Survey | \$2,500 |

LITIGATION

In the last five years, firm-wide, one litigation resulted in a claim. FEH is proactive in our efforts to work with clients and our insurance company to mitigate issues prior to litigation.

This issue went to mediation and has been resolved. FEH was not found to be at fault, and we continue to believe communication is key and ultimately want the best product possible for our clients.

02

/ FEH DESIGN OVERVIEW

AREAS OF FOCUS

Education, Libraries,
Municipal, Civic, Public
Safety, Corporate,
Commercial, Government,
Recreation, Historic,
Museums, Worship

ARCHITECTURE

Studies, Evaluations, Master
Planning, Design Workshops,
Design+Build, New
Construction, Additions,
Renovations, Historic
Preservation

STRUCTURAL ENGINEERING

Evaluations, New
Construction, Additions,
Renovations

INTERIOR DESIGN

Color Theory, Environmental
Branding, Graphic Design,
Furniture, Fixtures and
Equipment

DEMOLITION

Green in Mind:
Salvage, Recycle

BOND REFERENDUM SERVICES

Organize, Recruit, Research,
Coordinate, Marketing
Materials and Media
Management



We are a community of architects, engineers, interior and graphic designers with a passion to create. Every member brings unique talents to the table, and together we are reimagining the built environment. The Midwest is our home as our offices are located in Sioux City, Des Moines, and Dubuque, Iowa, and Oconomowoc, Wisconsin. Our clients receive a high level of personalized service and are involved in the entire design process.

Our people have been and continue to be our differentiator, it's who we are and what we do. Much like the color purple, we embody the balance of red's stimulation and blue's calm. We are a dynamic group of individuals who blend together to create a team that works seamlessly together for our clients and their goals.

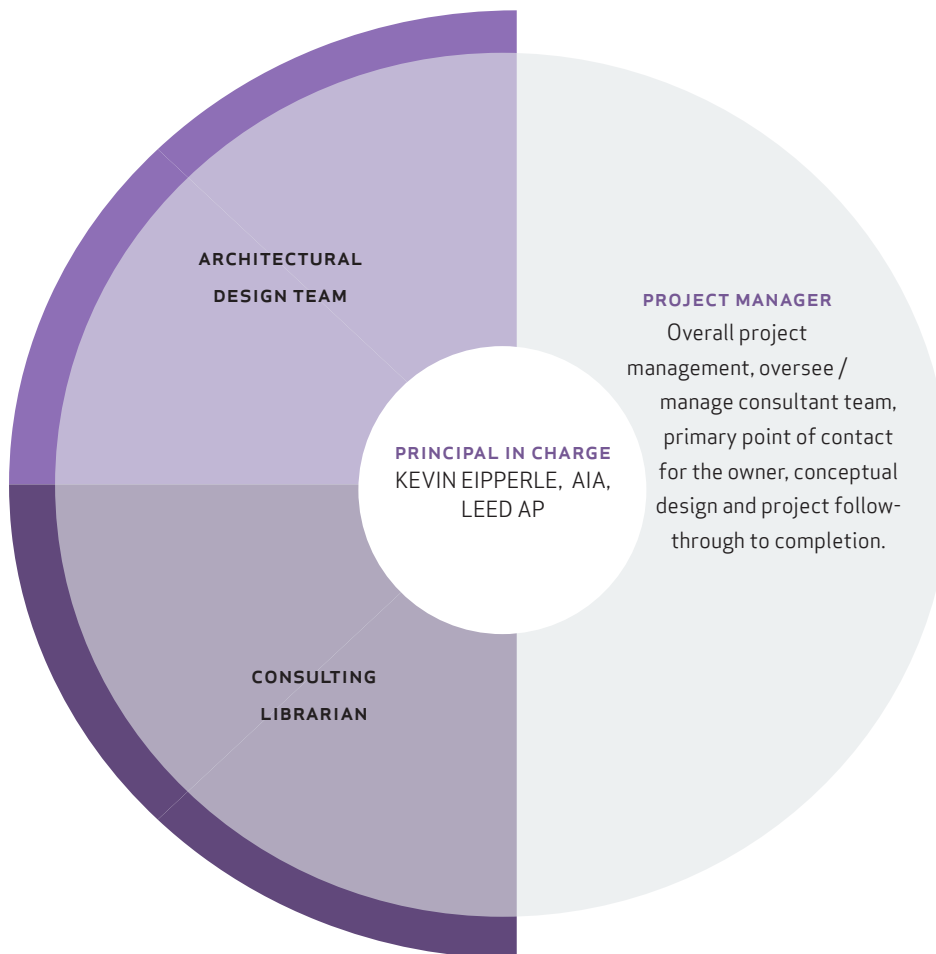
OUR HISTORY... BRIEFLY

FEH Design's roots trace back to 1898, when Andrew H. Foss, a Norwegian immigrant, began designing railroad depots. Much of the firm's early work included train depots, commercial buildings, and schools. During the Depression years, our firm worked on numerous government projects. Our Sioux City office opened in 1958, Des Moines in 1979, Dubuque in 2011, and our Wisconsin office in 2012. As our team and services grew, we re-branded to FEH DESIGN.

OUR MISSION

To create a better world through design – for our families, our clients and our communities.

/ DESIGN TEAM ROLES



For your project we will not need any outside consultants.

ARCHITECTURAL DESIGN TEAM

FEH DESIGN

Kevin Eipperle, AIA, LEED AP
Principal in Charge

Gregg Baum, AIA, LEED AP
Library Expert

Aaron Davis, AIA
Project Manager

CONSULTING LIBRARIAN

Bill Wilson, MLS



KEVIN EIPPERLE, AIA, LEED AP

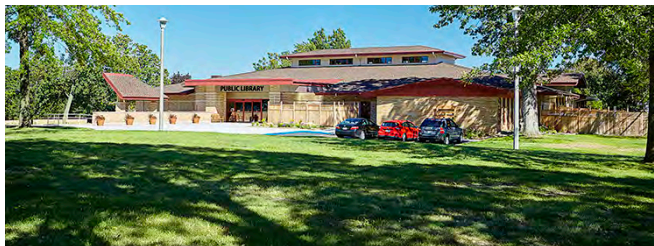
PRINCIPAL IN CHARGE

Kevin brings 30+ years of professional experience in a large range of educational/cultural projects. Kevin has a passion for delivering environments that promote success, with an expertise in new building facilities and additions, evaluations and renovations of existing buildings and in facilitating owner user groups in design meetings for long-range planning.

Bachelor of Arts in
Architecture Iowa State
University, 1985
Bachelor of Architecture
Iowa State University, 1986

Licensed Architect: IL, IA,
KS, SC, TN, WI
LEED AP

30+ years experience
11 years with FEH



RELEVANT EXPERIENCE

DEWITT COMMUNITY LIBRARY

DeWitt, Iowa
Facility Assessment, Conceptual Design,
Additions/Remodel

GALESBURG PUBLIC LIBRARY

Galesburg, Illinois
Facility Assessment & Conceptual Design,
New Building

SUN PRAIRIE PUBLIC LIBRARY

Sun Prairie, Wisconsin
Facility Assessment & Conceptual Design

LAKE GENEVA PUBLIC LIBRARY

Lake Geneva, Wisconsin
Space Needs Assessment, Facility
Assessment, Community Engagement,
Conceptual Design

BELLEVILLE PUBLIC LIBRARY

Belleville, Wisconsin
Facility Assessment, Conceptual Design,
Additions/Remodel

L.D. FARGO PUBLIC LIBRARY

Lake Mills, Wisconsin
Space Needs Assessment, Facility
Assessment, Community Engagement,
Conceptual Design

EAGER FREE PUBLIC LIBRARY

Evansville, Wisconsin
Facility Assessment, Conceptual Design,
Additions/Remodel

SCHREINER MEMORIAL LIBRARY

Lancaster, Wisconsin
Facility Assessment, Addition/Remodel,
Performance Plaza

SPARTA PUBLIC LIBRARY

Sparta, Wisconsin
Facility Assessment & Conceptual Design

ELY PUBLIC LIBRARY

Ely, Iowa
Site Selection & Conceptual Design

MILTON PUBLIC LIBRARY

Milton, Wisconsin
Remodel/Addition

GREGG BAUM, AIA, LEED AP

LIBRARY EXPERT

Gregg brings more than 35+ years of experience and has provided design excellence and project leadership for a variety of public and private sector clients. His project experience ranges from municipal, museums, exhibition facilities, libraries and visitor centers to churches and justice facilities. He provides a hands-on and interactive approach to design with a goal of creating client focused solutions.



Master of Architecture,
University of Wisconsin -
Milwaukee
Bachelor of Science,
University of Wisconsin -
Milwaukee

Licensed Architect: WI
LEED AP
35+ years experience
10 years with FEH

RELEVANT EXPERIENCE

DEWITT COMMUNITY LIBRARY

DeWitt, Iowa
Facility Assessment, Conceptual Design,
Additions/Remodel

SUN PRAIRIE PUBLIC LIBRARY

Sun Prairie, Wisconsin
Facility Assessment & Conceptual Design

ARAM PUBLIC LIBRARY

Delavan, Wisconsin
Facility Assessment & Conceptual Design

BELLEVILLE PUBLIC LIBRARY

Belleville, Wisconsin
Facility Assessment, Conceptual Design,
Additions/Remodel

EAGER FREE PUBLIC LIBRARY

Evansville, Wisconsin
Facility Assessment, Conceptual Design,
Additions/Remodel

SPARTA PUBLIC LIBRARY

Sparta, Wisconsin
Facility Assessment & Conceptual Design

LAKE GENEVA PUBLIC LIBRARY

Lake Geneva, Wisconsin
Space Needs Assessment, Facility
Assessment, Community Engagement,
Conceptual Design

PAULINE HAASS PUBLIC LIBRARY

Sussex, Wisconsin
Space Needs Assessment, Facility
Assessment, Community Engagement,
Conceptual Design

MILTON PUBLIC LIBRARY

Milton, Wisconsin
Remodel/Addition

L.D. FARGO PUBLIC LIBRARY

Lake Mills, Wisconsin
Space Needs Assessment, Facility
Assessment, Community Engagement,
Conceptual Design

BURLINGTON PUBLIC LIBRARY

Burlington, Wisconsin
Site, Selection, Conceptual Design,
Community Survey



AARON DAVIS, AIA

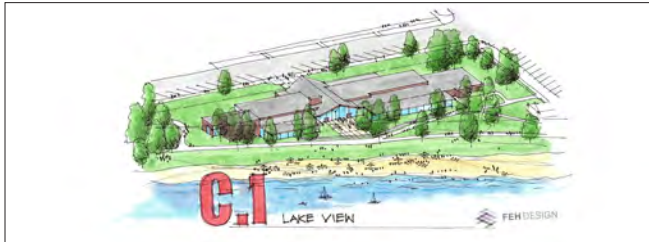
PROJECT MANAGER

Aaron adds value to projects by providing a high-level, big-picture view of the design process with the unique ability to also go into the technical details because of his background in engineering and construction. He takes pride in always being willing to learn, improve, and execute a better processes. He facilitates collaboration and teamwork to improve the quality, enjoyment and execution of every project.

Bachelor of Architecture
Iowa State University 2009

Licensed Architect: IA
WI

12 years experience
2 years with FEH



RELEVANT EXPERIENCE

WHITEHALL PUBLIC LIBRARY

Whitehall, Wisconsin
New Construction, Conceptual Design

L.D. FARGO PUBLIC LIBRARY

Lake Mills, Wisconsin
Facility Assessment & Conceptual Design

PAULINE HAASS PUBLIC LIBRARY

Sussex, Wisconsin
Space Needs Assessment, Facility Assessment, Community Engagement, Conceptual Design

LAKE GENEVA PUBLIC LIBRARY

Lake Geneva, Wisconsin
Space Needs Assessment, Facility Assessment, Community Engagement, Conceptual Design

BURLINGTON PUBLIC LIBRARY

Burlington, Wisconsin
Site, Selection, Conceptual Design, Community Survey

SUN PRAIRIE PUBLIC LIBRARY

Sun Prairie, Wisconsin
Conceptual Design

PROFESSIONAL ORGANIZATIONS / AFFILIATIONS

American Institute of Architects: National, State, Local

COMMUNITY INVOLVEMENT

Waukesha County Business Alliance
Oconomowoc Area Chamber of Commerce
Wisconsin Library Association
Member, Board of Director for the City of Waukesha Chamber of Commerce
Waukesha County CEO roundtable

WILLIAM WILSON, MLS

CONSULTING LIBRARIAN

Bill Wilson has been providing planning and evaluation services to public libraries and state library agencies since 1987. Bill has been working in and with libraries for nearly 50 years beginning his career as a “page” in his neighborhood public library at age 15! In the intervening decades, he has witnessed the importance of libraries to their communities on a first-hand basis. His approach to library design recognizes the importance that quality spaces can play in bringing people together with ideas that can transform lives.



RELEVANT EXPERIENCE

MILTON PUBLIC LIBRARY

Milton, Wisconsin

Facility Planning/Building Program

BELLEVILLE PUBLIC LIBRARY

Belleville, Wisconsin

Facility Planning/Space Needs Assessment

EAGER FREE PUBLIC LIBRARY

Evansville, Wisconsin

Facility Planning/Building Program

LAKE GENEVA PUBLIC LIBRARY

Lake Geneva, Wisconsin

Space Needs Assessment, Facility Assessment, Community Engagement, Conceptual Design

L.D. FARGO PUBLIC LIBRARY

Lake Mills, Wisconsin

Space Needs Assessment, Facility Assessment, Community Engagement, Conceptual Design

PAULINE HAASS PUBLIC LIBRARY

Sussex, Wisconsin

Space Needs Assessment, Facility Assessment, Community Engagement, Conceptual Design

GALESBURG PUBLIC LIBRARY

Galesburg, Illinois

Facility Planning/Building Program

Bachelor of Arts -
Gordon College, Wenham,
MA 1971 - English Literature

Master of Library Science
(MLS) - State University of
New York at Buffalo - Buf-
falo, NY - 1974 - Library
Science

Doctoral Studies - Universi-
ty of Wisconsin - Madison,
Madison, WI -
1988 - 1991 - Library
Science, Urban and Regional
Planning Minor

30+ years experience
4 years with FEH

Bill is the author of *Planning for Results: A Library Transformation Process* (with Dr. Ethel E. Himmel: Public Library Association), and of the *Delaware School Libraries Master Plan* (with Christopher Kelly and Kelly Sherretz: University of Delaware Institute for Public Administration)



03

/ PROJECT EXPERIENCE



LAKE GENEVA PUBLIC LIBRARY

LAKE GENEVA, WISCONSIN

The Lake Geneva Public Library is well-known for its iconic Frank Lloyd Wright prairie style design. Located on the shore of the lake, the library is the bookend of the downtown district. The deep overhangs and expansive windows allow for exquisite views of Elm Park and the beautiful lake beyond. The interior of the existing building maintains its original grandeur, featuring exposed masonry walls, original James Dresser furniture, and an impressive casual seating area facing the lake.

FEH Design was hired to do a space needs assessment, a comprehensive facility condition assessment, a public engagement process, community focus groups, and a two day Spark Session Design Workshop. The workshop focused on repurposing space in the historic building, optimizing interior space, and adding square footage to boost the efficiency and user-friendliness of the library. This study was completed, recommendations were presented and the phase one - Remodling project has been completed.

The assessment, planning, and construction phases of this library were in a Covid world. Along the way, many questions were raised about adapting services. Our team helped this library find a new approach to public library space needs.

COMPLETION DATE:
Study 2020

COST OF CONSTRUCTION:
\$878,000

CLIENT REFERENCE:
Emily Kornak
262 249 5283
ekornak@lakegeneva.lib.wi.us

PROJECT EXPERIENCE



BURLINGTON PUBLIC LIBRARY STUDY

BURLINGTON, WISCONSIN

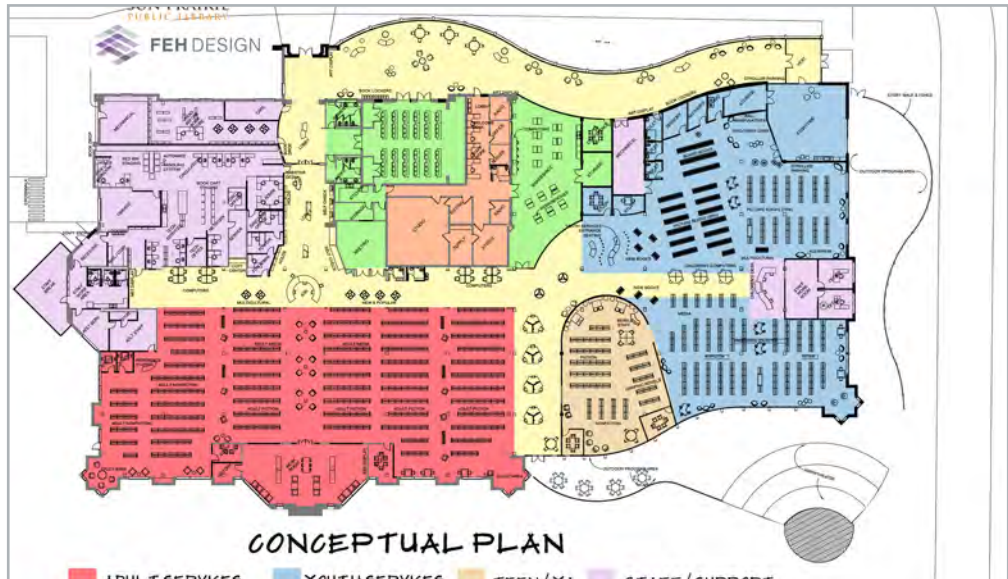
The Burlington Public Library is located downtown adjacent to a city park in a historic post office building. The 2020 Library Strategic Plan included a look at the future of the library and determined how to maximize the delivery and accessibility of library services to the community. The long-term space need of the library is projected to grow from 16,000 square feet to 26,000 square feet based on the estimated service population for 2040. Given this information, FEH Design considered 12 different site locations for the library based on criteria developed by the library board. This study was conducted during the COVID pandemic so we had to develop new strategies to engage the community. We utilized social media to make the community aware and engaged them in a virtual design workshop allowing them to ask questions, share comments and even vote for their favorite concept. Ten concepts were developed and two front runners emerged. These two concepts were further evaluated through the distribution of a community-wide survey which received 500 responses. A concept to expand the existing building was recommended by the library board to village board and the project embarked on a financial feasibility study in 2021 and is currently engaged in a fundraising campaign in 2022.

COMPLETION DATE:
Study 2020

COST OF CONSTRUCTION:
NA

CLIENT REFERENCE:
Joe Davies, Director
262 342 1130
jdavies@burlington.lib.wi.us

PROJECT EXPERIENCE



SUN PRAIRIE PUBLIC LIBRARY

SUN PRAIRIE, WISCONSIN

The Sun Prairie Public Library completed 1998 in resides in the center of the city adjacent to Sheehan Park and the Sun Prairie Family Aquatic Center. The City of Sun Prairie is experiencing strong growth and expects the population to blossom to 58,000 persons by 2040. The city and library board want to continue to provide cutting edge library services and hired FEH Design to provide a 20-year forecast for how the library can best deliver library services to the growing community.

FEH Design delivered a public planning process that engaged a cross section of community residents. The advisory task force confirmed library service goals, branch or no branch options, developed project goals for success, established decision making criteria and participated in the design workshop.

The result of the advisory task force effort was 12 potential library expansion options all located on the current library site. All options addressed projected library space needs and space for the Sun Prairie Media Center which shares space in the building. The recommendation to the library board was a one-story 89,000 square foot library with a project cost of \$22M - \$24M.

COMPLETION DATE:
Study 2018

COST OF CONSTRUCTION:
\$22 -24 million estimated

CLIENT REFERENCE:
Svetha Hetzler
608 825-0900
shetzler@sunlib.org

PROJECT EXPERIENCE



PAULINE HAASS PUBLIC LIBRARY STUDY

SUSSEX, WISCONSIN

In 2021, the Pauline Haass Public Library Board of Trustees decided to look to the future to determine how to maximize the delivery of library services to the community. FEH Design was commissioned to study the Pauline Haass Public Library by conducting a facility assessment of the existing library and a space needs analysis and study of options. Carson Block Consulting was brought on as an FEH team member, to lead the conversation on technology, what is happening and what trends to be sure to consider.

As a result of the current census data, this was an ideal time to look at growth patterns and determine if the current library building is sized appropriately to best serve all community members.

Through a series of community meetings, an interactive FEH Design Spark Session and a community wide survey, the citizens recommend that the community should plan an expansion and renovation of the current library building that will achieve the Goals for Success and serve as an asset for community members for decades to come.

COMPLETION DATE:
Study 2022

COST OF CONSTRUCTION:
\$9 -14 million estimated

CLIENT REFERENCE:
Adele Loria, Director
262 372 3477
aloria@phpl.lib.wi.us

PROJECT EXPERIENCE



L.D. FARGO PUBLIC LIBRARY

LAKE MILLS, WISCONSIN

Being the oldest operating library in the State of Wisconsin, the L.D. Fargo Public Library has been part of the Lake Mills community for over 100 years. It was nearly destroyed by fire twenty years ago and now faces a new challenge, an increased appetite for library services from a growing city. FEH Design was selected to help the Library Trustees figure out how to preserve their architectural gem (and also a listed Historic Building) and transform it into a modern-day library to meet the needs of the next generation. The team conducted a facility assessment to determine the condition of the historic structure and engaged the community in a grass roots effort to determine what library services they value the most. This input allowed our staff consulting librarian to determine the appropriate size for the library in anticipation of a two-day public spark session. The spark session generated a wide variety of potential solutions and budgets. The residents in attendance recommended an option to the Library Trustees and they are in the process of evaluating fundraising options.

COMPLETION DATE:
Study 2019

COST OF CONSTRUCTION:
N/A

CLIENT REFERENCE:
Gerard Saylor, Library Director
920 648 2166
gerardsaylor@lakemills.lib.wi.us