



# MEMO

## Engineering Department

To: Board of Public Works  
From: John Neumeier, Director of Public Works/City Engineer  
Date: 10/14/2024  
Re: 2b - Quiet Zone Update – Draft Plans

**Background information:** The City has been working with Short Elliot Hendrickson (SEH) on developing plans for quiet zone implantation. Draft plans are attached. These drawings will be combined with other data for a submittal for the Quiet Zone Notice of Intent (NOI) to various parties for review, including Federal Railroad Administration (FRA), Office of the Commissioner of Railroads (OCR), CN Railroad, and Wisconsin Department of Transportation (WisDOT).

**Strategic Plan:** The quiet zone implementation has been a request for several years from various neighborhoods. The investment by the City will be an improvement to quality of life and will help work toward being a community of choice.

**Budget:** Estimated project cost for temporary safety improvements is \$100,000-\$150,000. This has been accounted for in the proposed 2025 Capital Improvement Plan along with previous borrowings.

**Staff Recommended Action:**  
No Action Needed – Informational Only



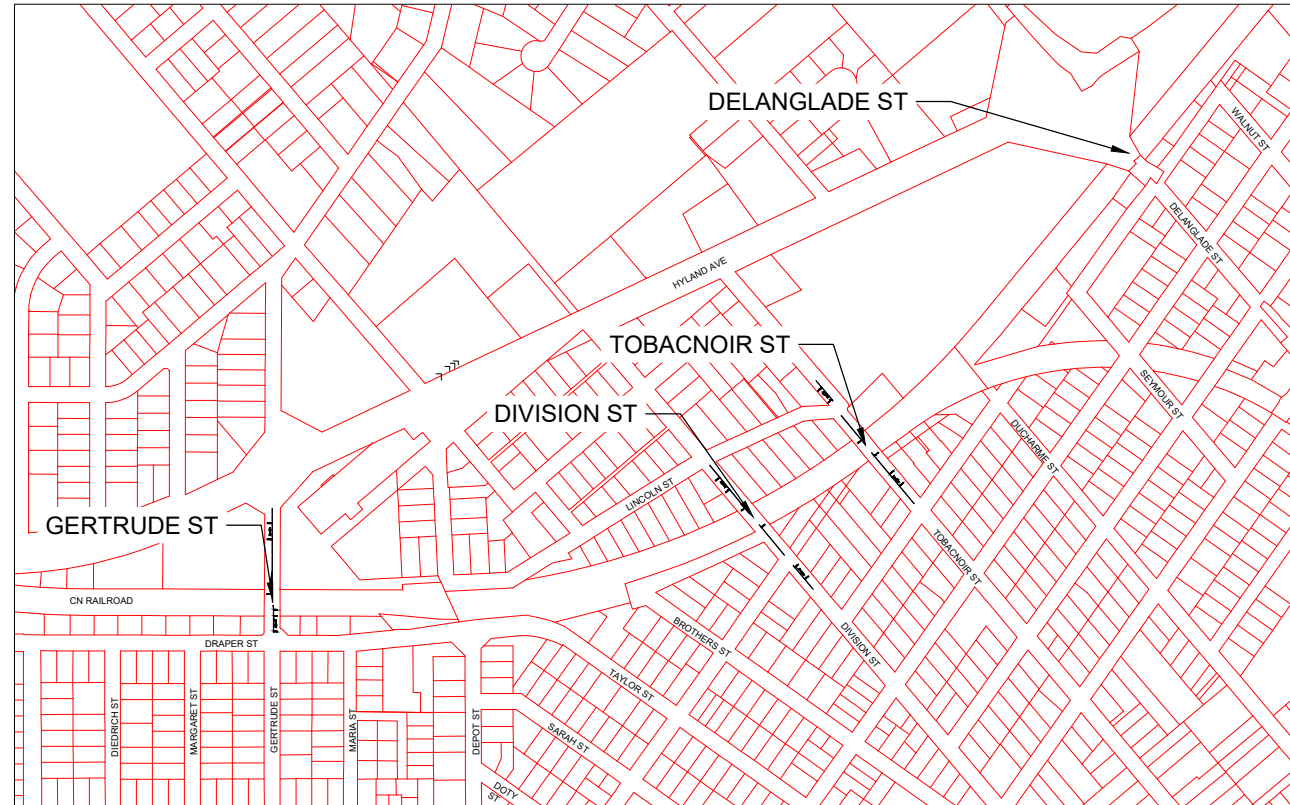
# CITY OF KAUKAUNA, WISCONSIN

## PRELIMINARY PLANS FOR

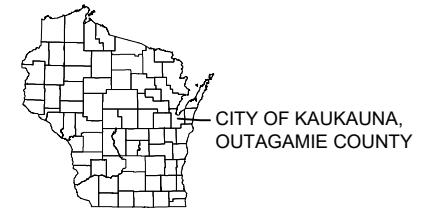
# RAILROAD CROSSING IMPROVEMENTS

Sheet List Table	
Sheet Number	Sheet Title
1	TITLE
2	DETAILS
3	OVERVIEW
4	GETRUDE STREET
5	DIVISION STREET
6	TOBACNOIR STREET
7	DELANGLADE STREET

EXISTING	
	RIGHT OF WAY
	PERMANENT EASEMENT
	PROPERTY LINE
	HORIZONTAL CONTROL POINT
	BENCHMARK
	SURVEY MARKER
	SOIL BORING
	SANITARY SEWER AND MANHOLE
	FORCE MAIN AND LIFT STATION
	SANITARY SEWER SERVICE & CLEANOUT
	WATER MAIN, HYDRANT, VALVE AND MANHOLE
	WATER SERVICE AND CURB STOP BOX
	STORM SEWER, MANHOLE AND CATCH BASIN
	CULVERT AND APRON ENDWALL
	GAS MAIN, VALVE, VENT AND METER
	HANDHOLE
	BURIED FIBER OPTIC CABLE AND MANHOLE
	BURIED PHONE CABLE, PEDESTAL AND MANHOLE
	BURIED TV CABLE, PEDESTAL AND MANHOLE
	BURIED ELECTRIC CABLE, PEDESTAL, MANHOLE, TRANSFORMER AND METER
	OVERHEAD WIRE, POLE AND GUY WIRE
	LIGHT POLE
	TRAFFIC SIGNAL
	STREET NAME SIGN
	SIGN (NON STREET NAME)
	RAILROAD TRACKS
	DECIDUOUS AND CONIFEROUS TREE
	BUSH / SHRUB AND STUMP
	EDGE OF WOODED AREA
	WETLAND
	BUILDING
	FENCE (UNIDENTIFIED)
	BARBED WIRE FENCE
	CHAIN LINK FENCE
	ELECTRIC WIRE FENCE
	WOOD FENCE
	WOVEN WIRE FENCE
	PLATE BEAM GUARDRAIL
	CABLE GUARDRAIL
	POST / BOLLARD
	RETAINING WALL
PROPOSED	
	STREET CENTERLINE
	RIGHT-OF-WAY
	PERMANENT EASEMENT
	TEMPORARY EASEMENT
	CONSTRUCTION LIMITS
	SANITARY SEWER, BULKHEAD AND MANHOLE
	FORCE MAIN
	SANITARY SERVICE AND CLEANOUT
	WATER MAIN, TEE, HYDRANT, BULKHEAD AND VALVE
	WATER VALVE MANHOLE, REDUCER, BEND AND CROSS
	WATER SERVICE AND CURB STOP BOX
	STORM SEWER, MANHOLE AND CATCH BASIN
	CULVERT AND APRON ENDWALL
	DRAIN TILE
	DITCH / SWALE
	RIPRAP
	STREET NAME SIGN
	SIGN (NON STREET NAME)
	RETAINING WALL



### PROJECT LOCATION



CITY OF KAUKAUNA,  
OUTAGAMIE COUNTY

Save: 7/5/2024 8:21 PM X:\KOK\KAUKA\168893\5-final-dsgn\51-drawings\10-Civil\road\dwg\sheet\KA168893.TL.dwg

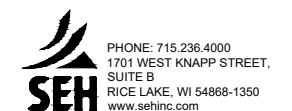
CITY OF KAUKAUNA, WISCONSIN

NOTE:  
THE SUBSURFACE UTILITY QUALITY INFORMATION IN THIS PLAN IS LEVEL D. THIS UTILITY QUALITY LEVEL WAS DETERMINED ACCORDING TO THE GUIDELINES OF CI/ASCE 38-02 ENTITLED "STANDARD GUIDELINES FOR THE COLLECTION AND DEPICTION OF EXISTING SUBSURFACE UTILITY DATA."

THE CONTRACTOR SHALL CALL THE WISCONSIN ONE CALL SYSTEM AT 811 BEFORE COMMENCING EXCAVATION.



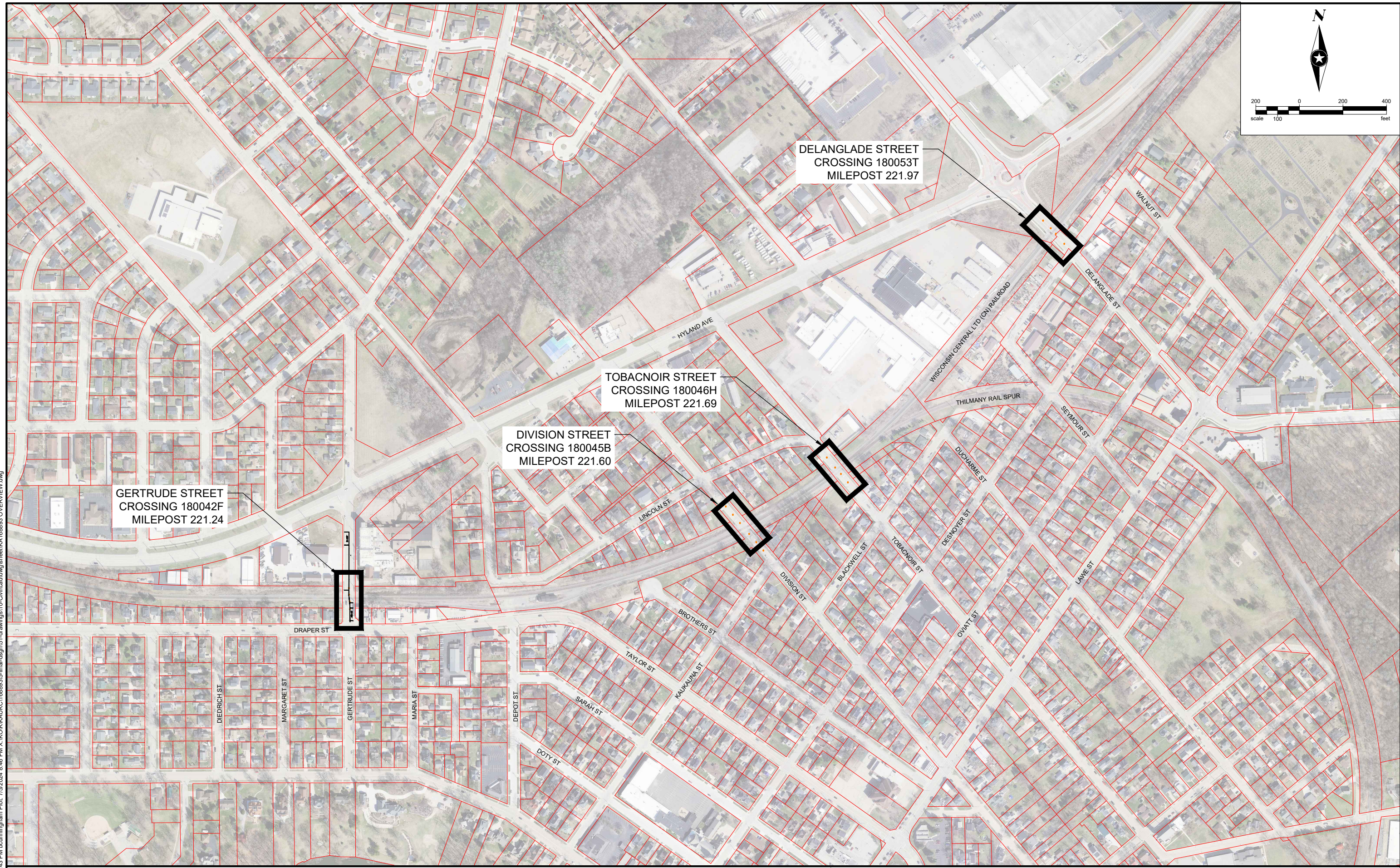
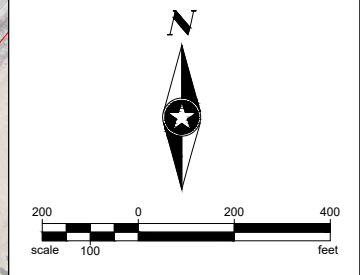
Know what's below.  
Call before you dig.



168893

1  
of 7





Save: 7/5/2024 8:43 PM bounningham Plot: 7/5/2024 8:46 PM X:\KOKKAKU\K168893\5-final-dsgn\51-drawings\1D-Civil\cad\dwg\sheet\K168893 OVERVIEW.dwg

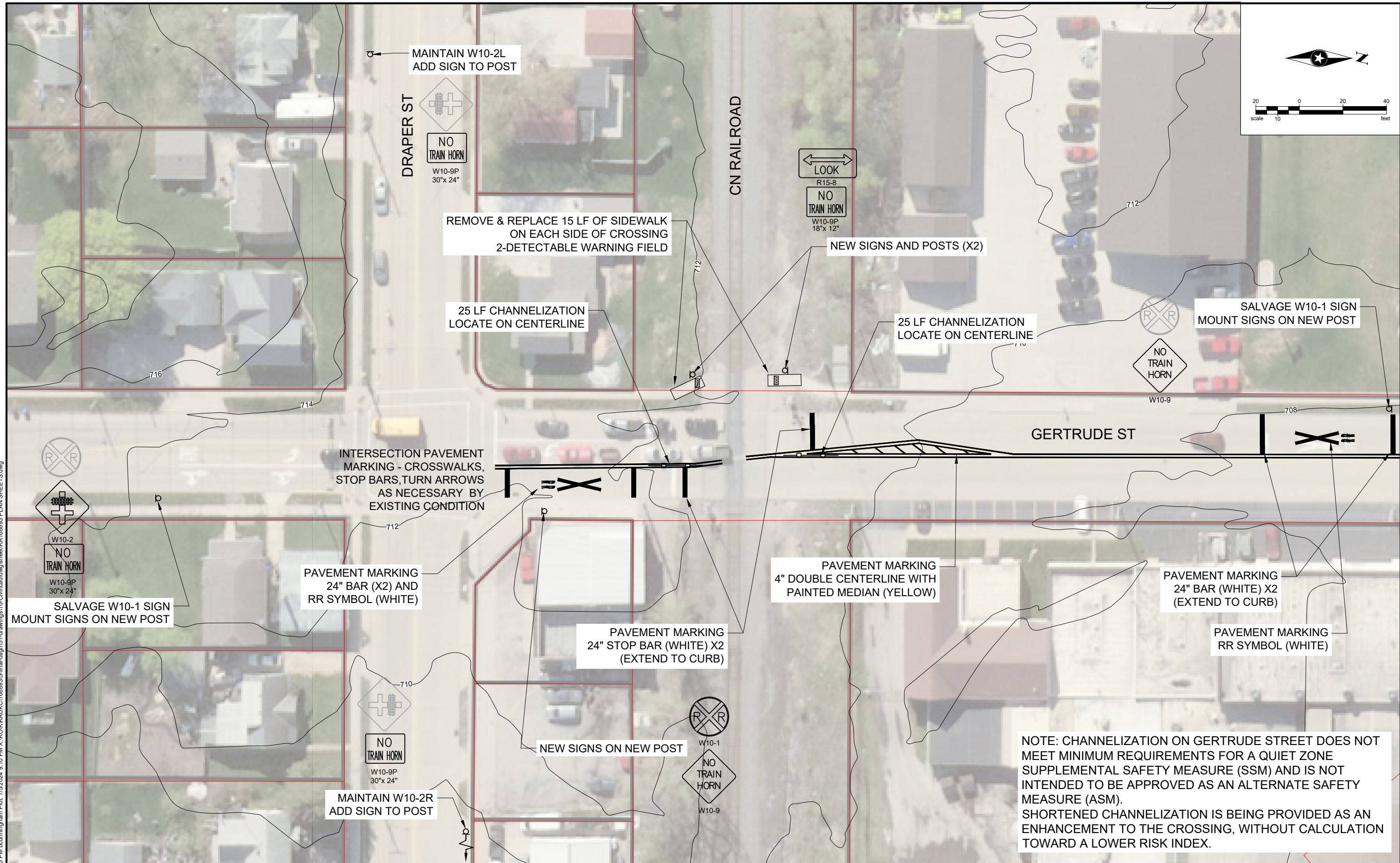
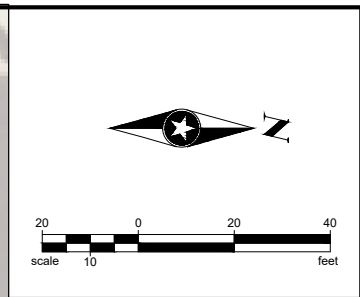
SEH Project	#####	Rev.#	Revision Issue Description	Date	Rev.#	Revision Issue Description	Date
Drawn By							
Designed By							
Checked By							



**RAIL CROSSING IMPROVEMENTS**  
CITY OF KAUKAUNA, WISCONSIN

3 - OVERVIEW

3  
of 7



MAINTAIN W10-2L  
ADD SIGN TO POST

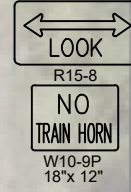
DRAPER ST



W10-9P  
30"x 24"

REMOVE & REPLACE 15 LF OF SIDEWALK  
ON EACH SIDE OF CROSSING  
2-DETECTABLE WARNING FIELD

CN RAILROAD



R15-8  
W10-9P  
18"x 12"

NEW SIGNS AND POSTS (X2)

25 LF CHANNELIZATION  
LOCATE ON CENTERLINE

25 LF CHANNELIZATION  
LOCATE ON CENTERLINE

SALVAGE W10-1 SIGN  
MOUNT SIGNS ON NEW POST



W10-9

GERTRUDE ST

INTERSECTION PAVEMENT  
MARKING - CROSSWALKS,  
STOP BARS, TURN ARROWS  
AS NECESSARY BY  
EXISTING CONDITION

PAVEMENT MARKING  
24" BAR (X2) AND  
RR SYMBOL (WHITE)

SALVAGE W10-1 SIGN  
MOUNT SIGNS ON NEW POST

PAVEMENT MARKING  
4" DOUBLE CENTERLINE WITH  
PAINTED MEDIAN (YELLOW)

PAVEMENT MARKING  
24" BAR (WHITE) X2  
(EXTEND TO CURB)

PAVEMENT MARKING  
RR SYMBOL (WHITE)

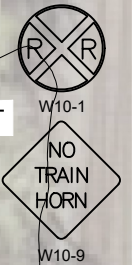
PAVEMENT MARKING  
24" STOP BAR (WHITE) X2  
(EXTEND TO CURB)

NEW SIGNS ON NEW POST

MAINTAIN W10-2R  
ADD SIGN TO POST



W10-9P  
30"x 24"

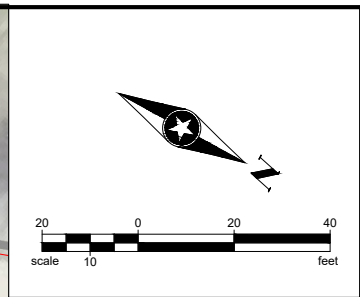
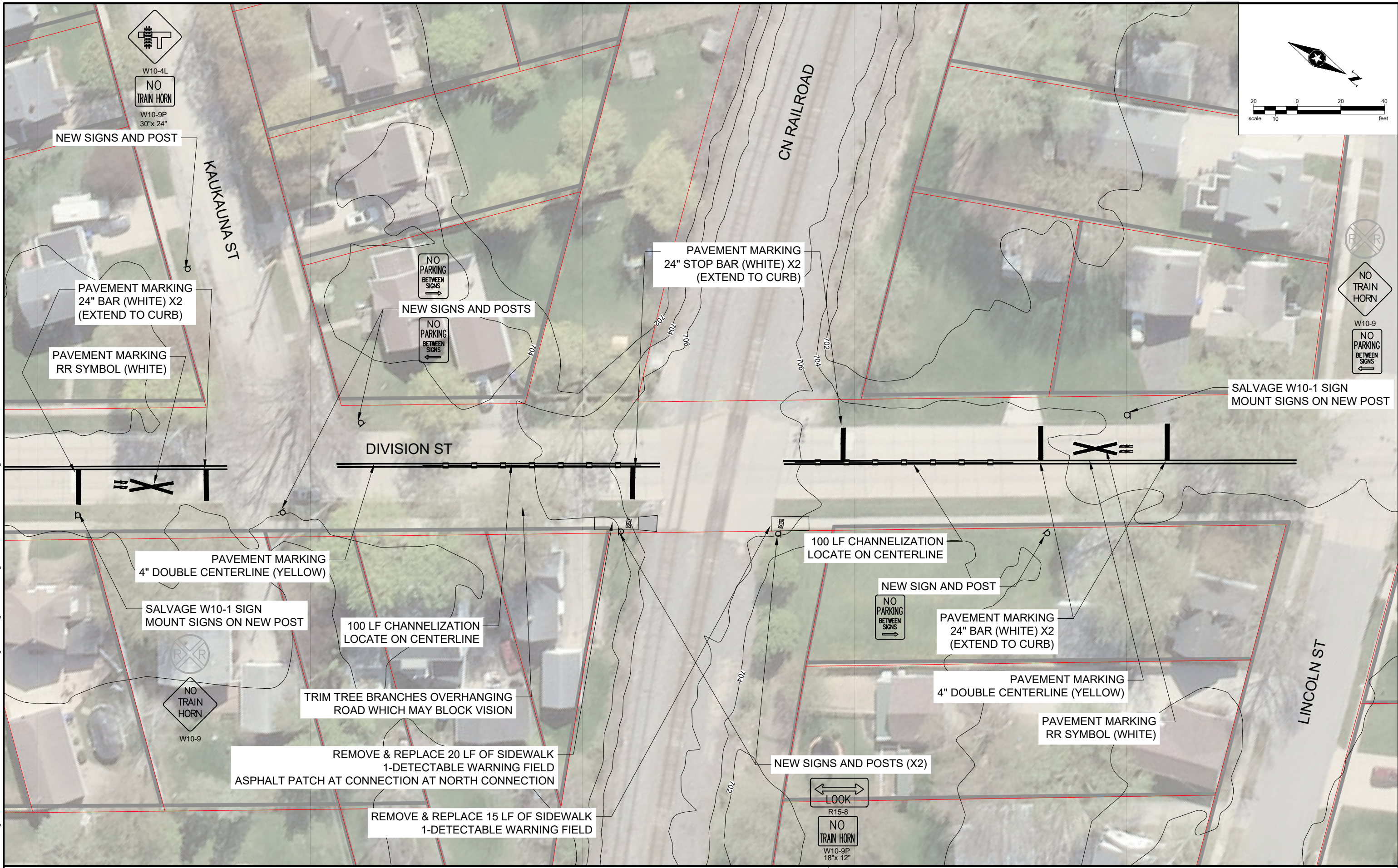


W10-1  
W10-9

NOTE: CHANNELIZATION ON GERTRUDE STREET DOES NOT MEET MINIMUM REQUIREMENTS FOR A QUIET ZONE SUPPLEMENTAL SAFETY MEASURE (SSM) AND IS NOT INTENDED TO BE APPROVED AS AN ALTERNATE SAFETY MEASURE (ASM). SHORTENED CHANNELIZATION IS BEING PROVIDED AS AN ENHANCEMENT TO THE CROSSING, WITHOUT CALCULATION TOWARD A LOWER RISK INDEX.

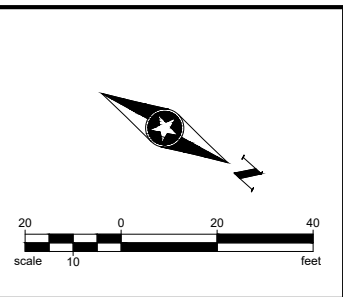
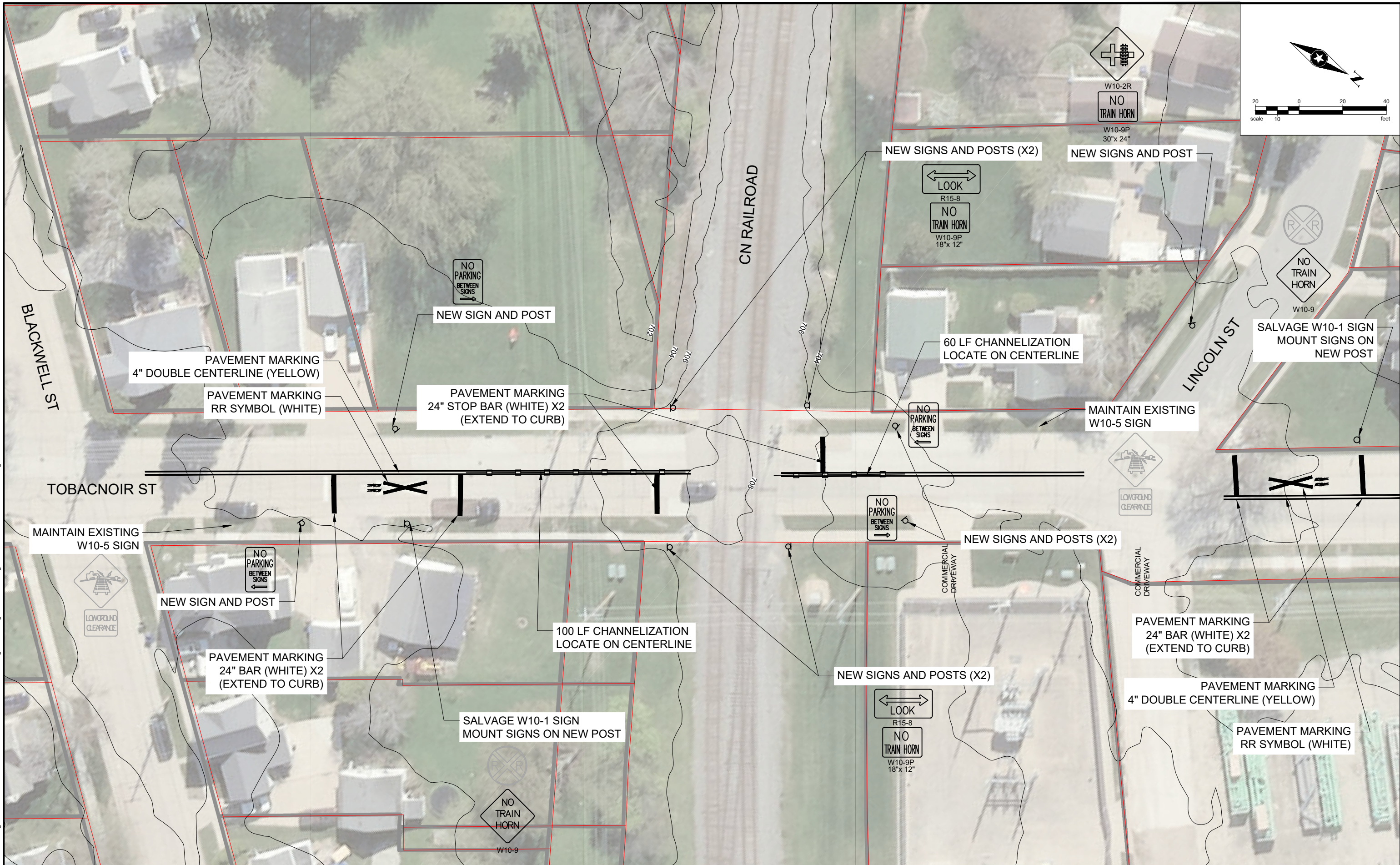
Save: 7/5/2024 8:23 PM bounningham Plot: 7/5/2024 9:10 PM X:\KOKK\KUKC\1688935-final-dsgn\51-drawings\10-Civil\cad\dwg\sheet\KA168893 PLAN SHEETS.dwg

Save: 7/5/2024 8:23 PM birmingham Plot: 7/5/2024 8:51 PM x:\KOKKKAUC\168893\5-final-dsgn\5-1-drawings\110-Civil\cad\dwg\sheet\KCA168893.PLAN SHEETS.dwg



SEH Project	#####	Rev.#	Revision Issue Description	Date	Rev.#	Revision Issue Description	Date
Drawn By							
Designed By							
Checked By							

Save: 7/5/2024 8:23 PM birmingham Plot: 7/5/2024 8:52 PM x:\KOKKAKU\K1688935-final-dsgn\5-1-drawings\10-Civil\cdwg\sheet\K168893 PLAN SHEETS.dwg



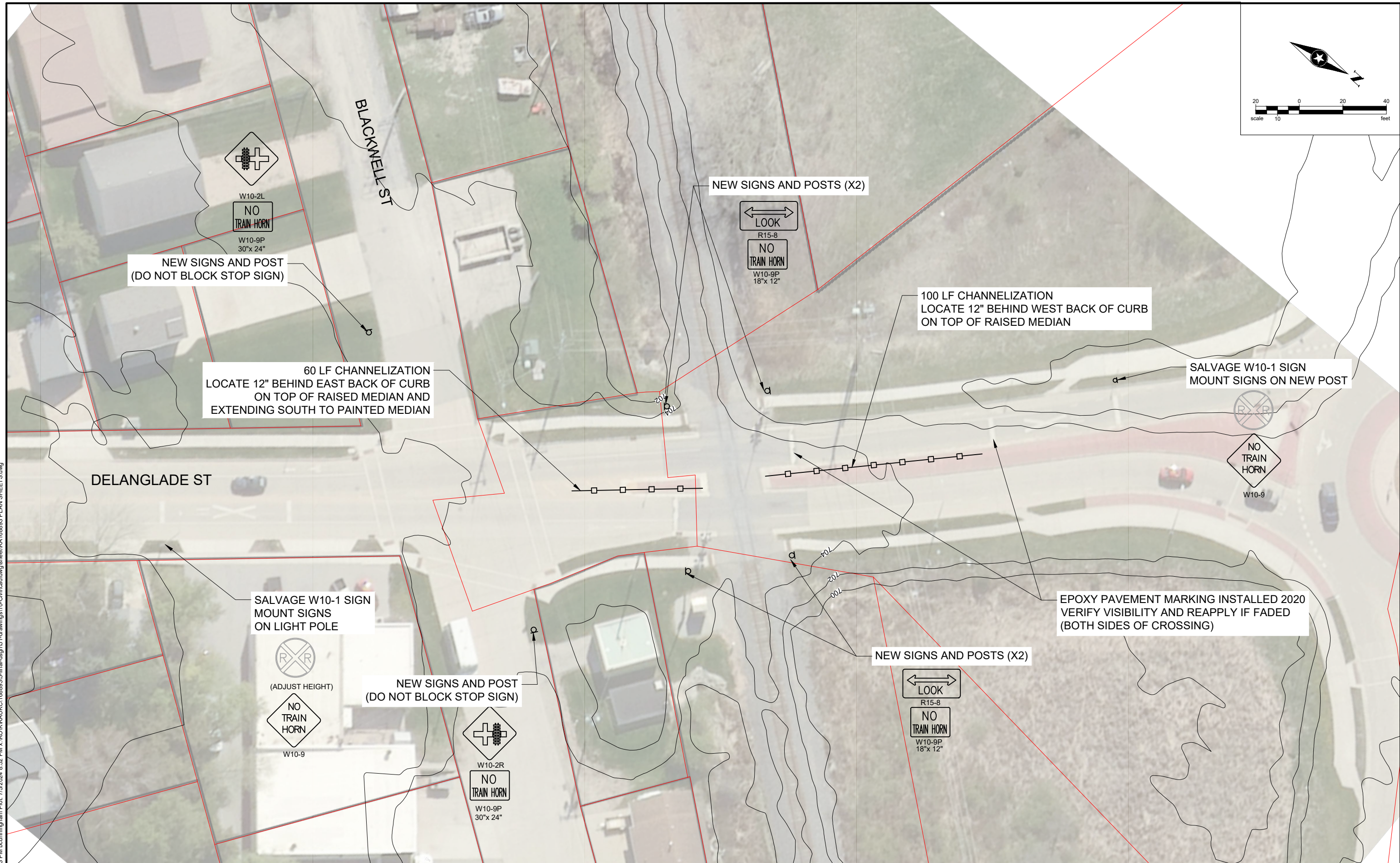
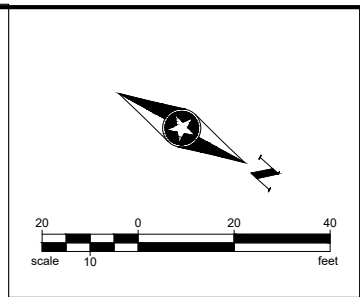
SEH Project	#####	Rev.#	Revision Issue Description	Date	Rev.#	Revision Issue Description	Date
Drawn By							
Designed By							
Checked By							



**RAIL CROSSING IMPROVEMENTS**  
CITY OF KAUKAUNA, WISCONSIN

**TOBACNOIR STREET**





Save: 7/5/2024 8:23 PM birmingham Plot: 7/5/2024 8:52 PM x:\KOKKAU\K168893\5-final-dsgn\5-1-drawings\10-Civil\cdwg\sheet\K168893 PLAN SHEETS.dwg

SEH Project	#####	Rev.#	Revision Issue Description	Date	Rev.#	Revision Issue Description	Date
Drawn By							
Designed By							
Checked By							



**RAIL CROSSING IMPROVEMENTS**  
CITY OF KAUKAUNA, WISCONSIN

**DELANGLADE STREET**