

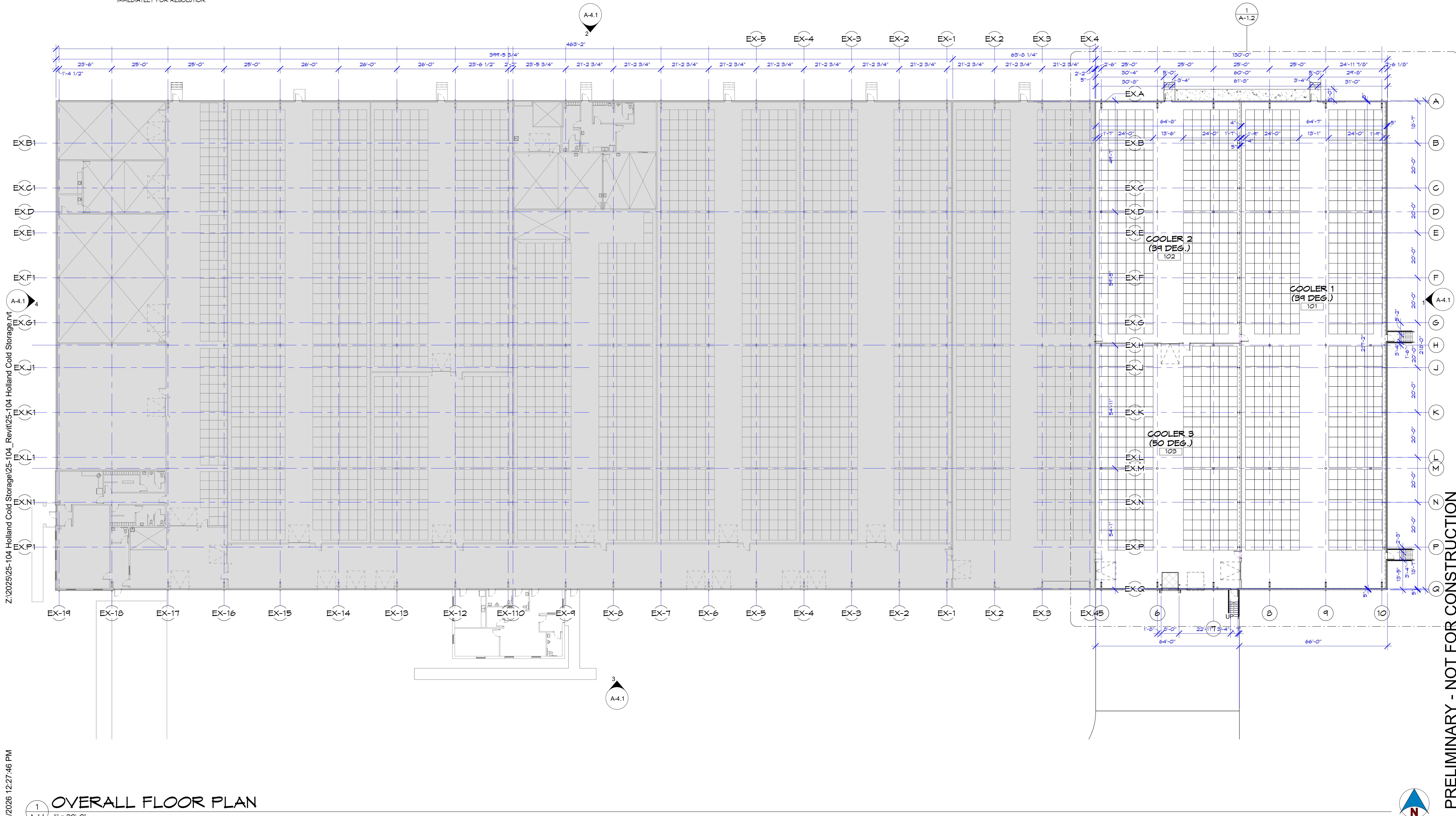
GENERAL FLOOR PLAN NOTES:

- CONTRACTOR TO PROVIDE ALL NECESSARY PERMITS & FEES REQUIRED TO COMPLETE THE PROJECT.
- CONSTRUCTION & INSTALLATION SHALL CONFORM TO ALL APPLICABLE LOCAL, STATE & NATIONAL BUILDING CODES & THE AMERICANS WITH DISABILITY ACT.
- ALL NEW WALLS SHALL BE CONSTRUCTED AS PER THE WALL TYPE & SHALL BE CARRIED TO THE STRUCTURE ABOVE, UNLESS OTHERWISE NOTED. PREPARE ALL SURFACES FOR FINISHES INDICATED.
- CONTRACTOR TO PROVIDE BLOCKING OR GROUTED CMU CORES FOR ALL WALL SUPPORTED CASEWORK, TOILET ACCESSORIES, HANDRAILS, EQUIPMENT, DOOR STOPS, SHELVING, ETC. AS REQUIRED.
- CONTRACTOR SHALL COORDINATE ALL WORK WITH EQUIPMENT MANUFACTURERS TO ENSURE APPROPRIATE ROUGH IN CLEARANCE FOR EQUIPMENT INSTALLATION & USE.
- WHERE MOUNTING HEIGHTS ARE NOT INDICATED, MOUNT INDIVIDUAL UNITS OF WORK AT A.D.A. STANDARD MOUNTING HEIGHTS FOR THE PARTICULAR APPLICATION INDICATED. REFER QUESTIONABLE MOUNTING HEIGHT CHOICES TO THE ARCHITECT FOR A FINAL DECISION.
- DO NOT SCALE THE DRAWINGS.
- ALL DIMENSIONS AND INTERIOR WALL THICKNESSES ARE FROM THE FINISHED FACE OF WALL TO FINISHED FACE OF WALL, UNLESS NOTED OTHERWISE.
- CONTRACTOR SHALL LAYOUT & MARK ALL WALLS & OPENINGS PRIOR TO CONSTRUCTION. ANY DISCREPANCY SHALL BE REPORTED TO THE ARCHITECT IMMEDIATELY FOR RESOLUTION.

- ALL FURNITURE AND EQUIPMENT NOT SPECIFICALLY NOTED ON PLANS SHALL BE SUPPLIED AND INSTALLED BY OWNER. CONTRACTOR SHALL COORDINATE ALL ELECTRICAL & DATA OUTLETS, ETC. IN FINAL FURNITURE LAYOUT DRAWINGS.
- ALL DOOR OFFSETS (HINGE SIDE) TO BE A MINIMUM OF 4", UNLESS NOTED OTHERWISE.
- ALL GYP. BOARD SHALL RETURN TO ALL WINDOW/DOOR FRAMES AT JAMBS & HEAD, TYPICAL, UNLESS NOTED OTHERWISE.
- ENTIRE BUILDING TO BE EQUIPPED WITH AN APPROVED, SUPERVISED, AUTOMATIC FIRE SPRINKLER SYSTEM. THIS SYSTEM SHALL BE DESIGNED AND INSTALLED IN ACCORDANCE WITH NFPA 13 BY THE FIRE SPRINKLER CONTRACTOR.
- GENERAL CONTRACTOR TO COORDINATE WHETHER ANY CMU CORES NEED GROUTED FOR WALL-MOUNTED EQUIPMENT.
- REFER TO SITE PLAN SHEET FOR CONCRETE WALK LAYOUT.
- ANY PENETRATIONS IN DESIGNATED FIRE WALLS SHALL MAINTAIN THE REQUIRED FIRE SEPARATION BETWEEN AREAS. CONTRACTOR TO PROVIDE SLEEVES, FIRE RETARDANT INSULATION & FIRE CAULKING AS REQUIRED.

STANDARD FLOOR PLAN NOTATION:

- INDICATES EXIT LIGHTS (SEE LIFE-SAFETY PLAN SHEET, REFL. CLG. PLANS AND ELECTRICAL PLANS FOR LOCATIONS)
- INDICATES SEMI-RECESSED FIRE EXTINGUISHER CABINET
- INDICATES FIRE EXTINGUISHER - MIN. 10" "A-B-C" (UNLESS NOTED OTHERWISE) OR OTHER AS REQ'D. BY STATE AND/OR LOCAL CODE. SEE SPECIFICATIONS. (MOUNT AT 4'-0" A.F.F. MAX. TO TOP/EXTINGUISHER).
- FLOOR DRAIN
- CATCH BASIN
- INDICATES WALL TYPES, REFER TO INT. WALL TYPES FOR INFORMATION.
- 1-HOUR FIRE BARRIER WALL - REFER TO PLANS & WALL TYPES.



Z:\2025\25-104_Holland Cold Storage\25-104_Rev\25-104_Holland Cold Storage.rvt

2/20/2026 12:27:46 PM

1 OVERALL FLOOR PLAN
A-1.1 1" = 20'-0"

Gries Architectural Group Inc.
 HUDSON OFFICE: 400 South 2nd Street, Suite #105, Newark, NJ 07102, Phone: 920-722-2445, www.gries.design
 MEENAH OFFICE: 500 North Commercial Street, Suite 200, Kaukauna, WI 54906, Phone: 920-722-2445, www.gries.design

©Copyright. This Print/Computer File Is The Exclusive Property Of Gries Architectural Group, Inc. Use Only For Purpose Which Loaned. Copying Or Reproducing Is Prohibited. Return Upon Request.

A BUILDING ADDITION FOR:
HOLLAND COLD STORAGE
 KAUKAUNA, WI

REVISION HISTORY

NO.	DESCRIPTION	DATE

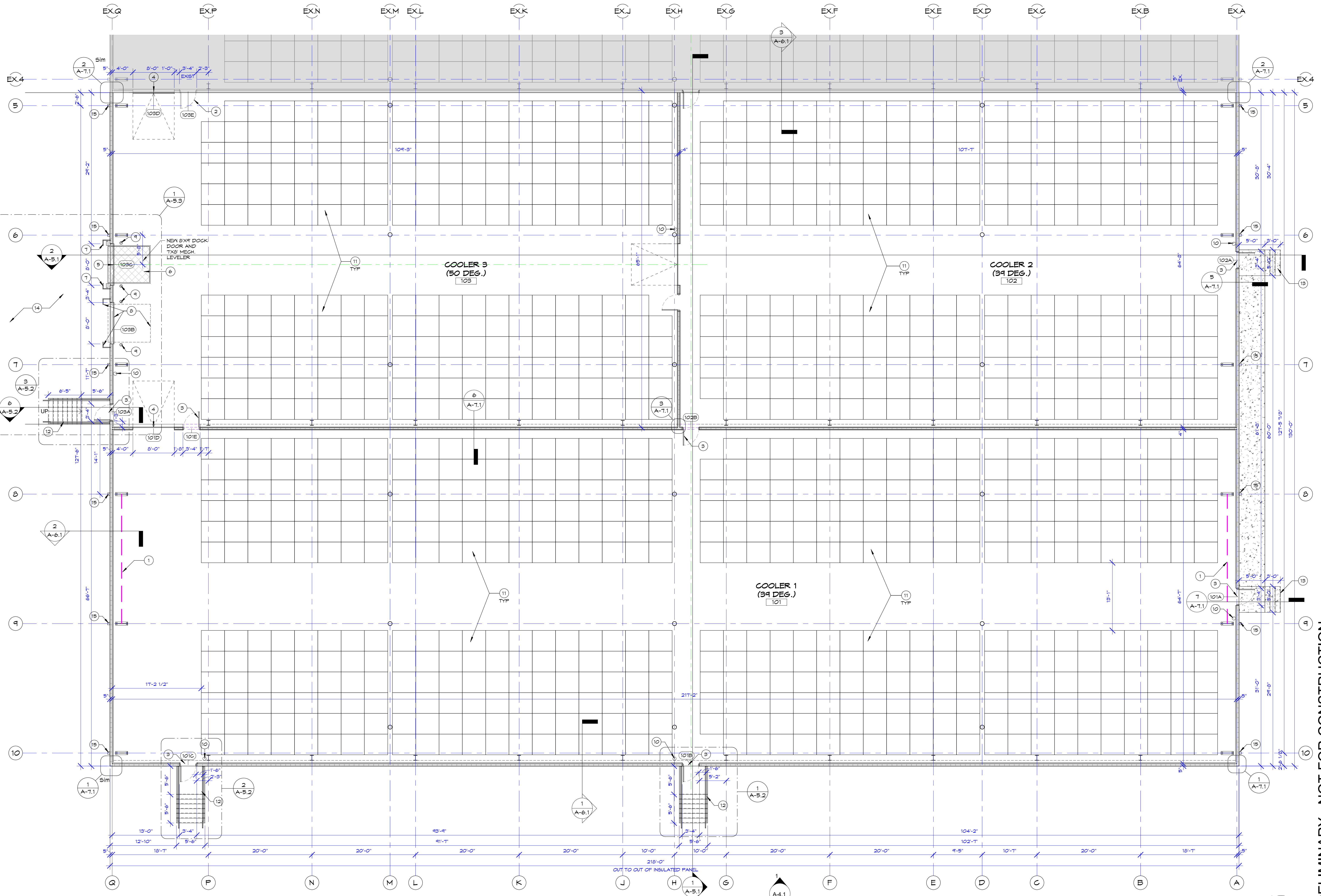
date: 02-20-2026
 job: 25-104
 d. by: LAK

A-1.1

PRELIMINARY - NOT FOR CONSTRUCTION

Z:\2025\25-104_Holland Cold Storage\25-104_Revit\25-104_Holland Cold Storage.rvt

2/20/2026 12:27:46 PM



1 FLOOR PLAN - ADDITION
A-1.2 1/8" = 1'-0"

PRELIMINARY - NOT FOR CONSTRUCTION

Gries Architectural Group Inc.
 HUDSON OFFICE: 400 South 2nd Street, Suite #105
 NEENAH OFFICE: 900 North Commercial Street, Suite 208
 Phone: 920-722-2445
 www.gries.design

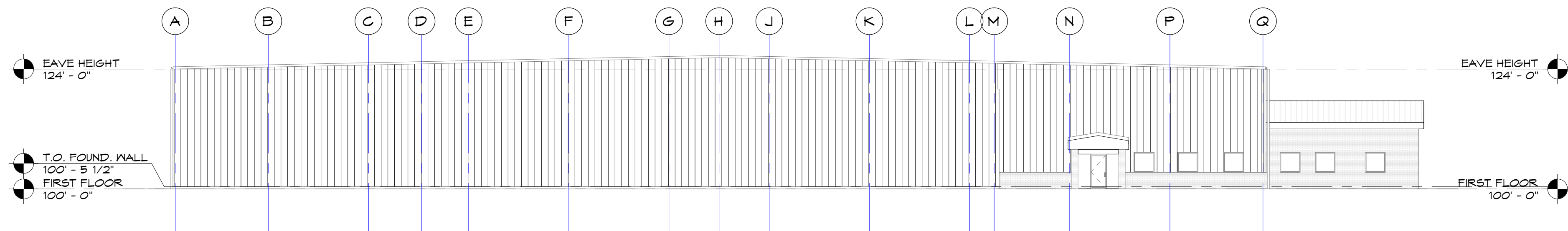
©Copyright. This Print/Computer File is the Exclusive Property of Gries Architectural Group, Inc. Use Only For Purpose Which Loaned. Copying Or Reproducing Is Prohibited. Return Upon Request.

A BUILDING ADDITION FOR:
HOLLAND COLD STORAGE
KAUKAUNA, WI

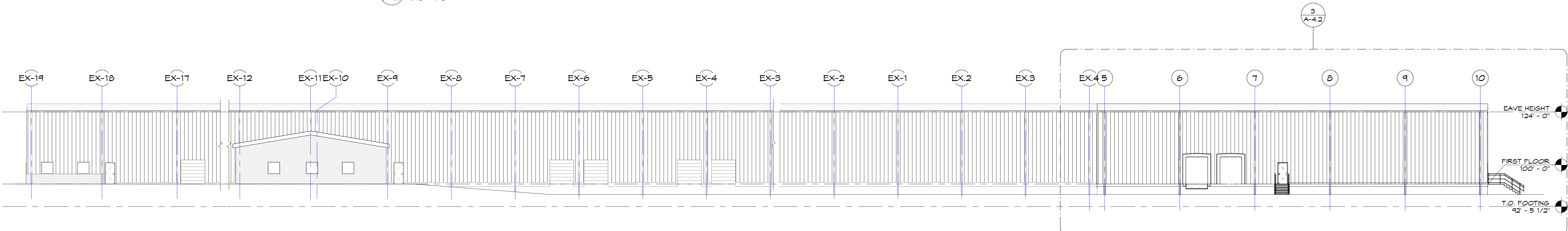
REVISION HISTORY		
NO.	DESCRIPTION	DATE

date: 02-20-2026
job: 25-104
d. by: LAK

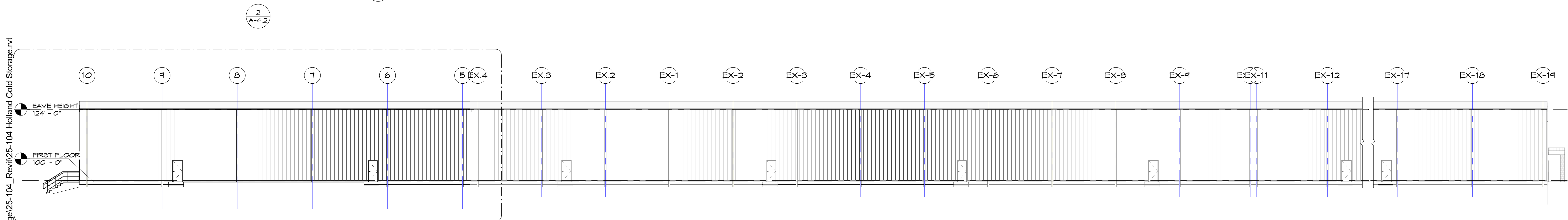
A-1.2



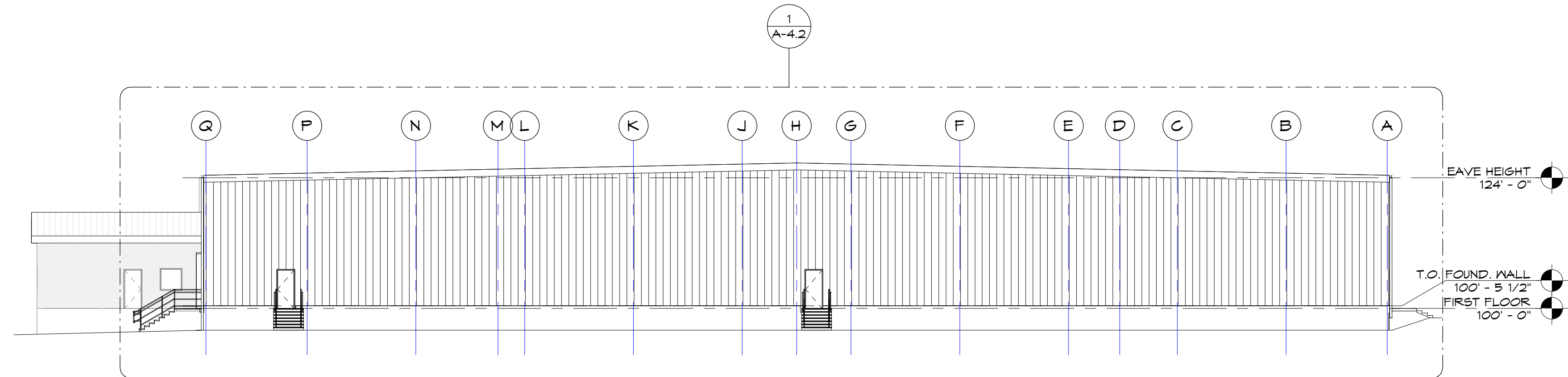
4 WEST ELEVATION
A-4.1 1/16" = 1'-0"



3 SOUTH ELEVATION
A-4.1 1/16" = 1'-0"



2 NORTH ELEVATION
A-4.1 1/16" = 1'-0"



1 EAST ELEVATION
A-4.1 1/16" = 1'-0"

Z:\2025\25-104_Holland Cold Storage\25-104_Revit\25-104_Holland Cold Storage.rvt

2/20/2026 12:27:56 PM

©Copyright. This FirstComputer File Is The Exclusive Property Of Gries Architectural Group, Inc. Use Only For Purpose Which Learned. Copying Or Reproducing Is Prohibited. Return Upon Request.

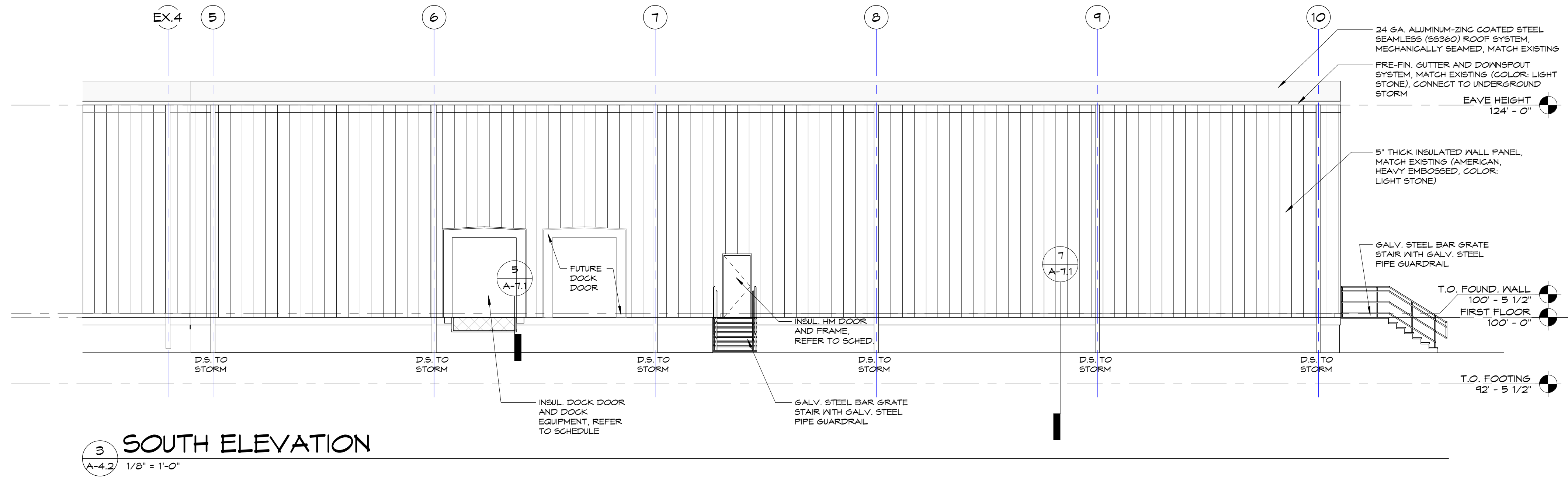
A BUILDING ADDITION FOR:
HOLLAND COLD STORAGE
 KAUKAUNA, WI

PRELIMINARY - NOT FOR CONSTRUCTION

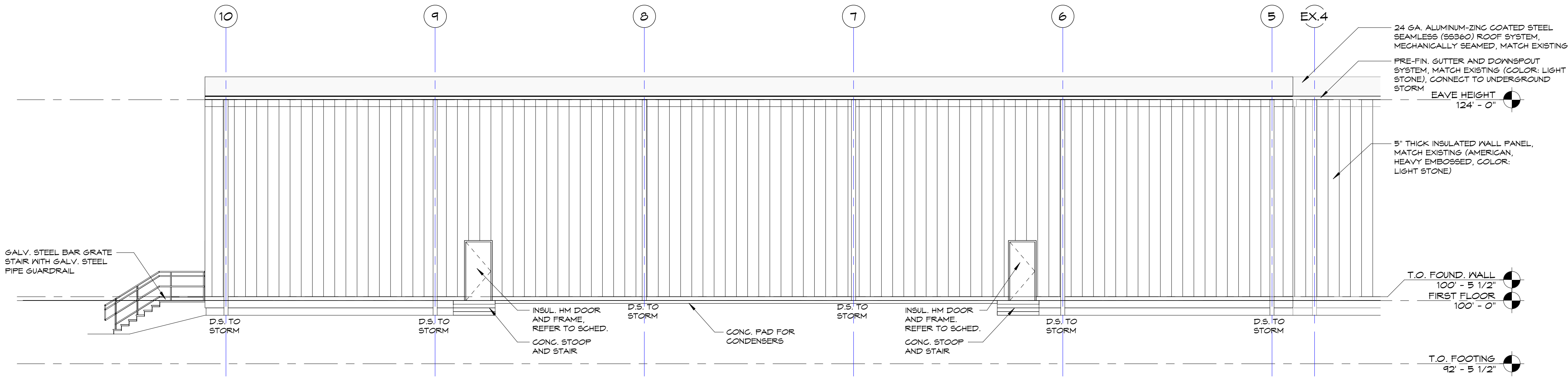
REVISION HISTORY		
NO.	DESCRIPTION	DATE

date: 02-20-2026
 job: 25-104
 d. by: LAK

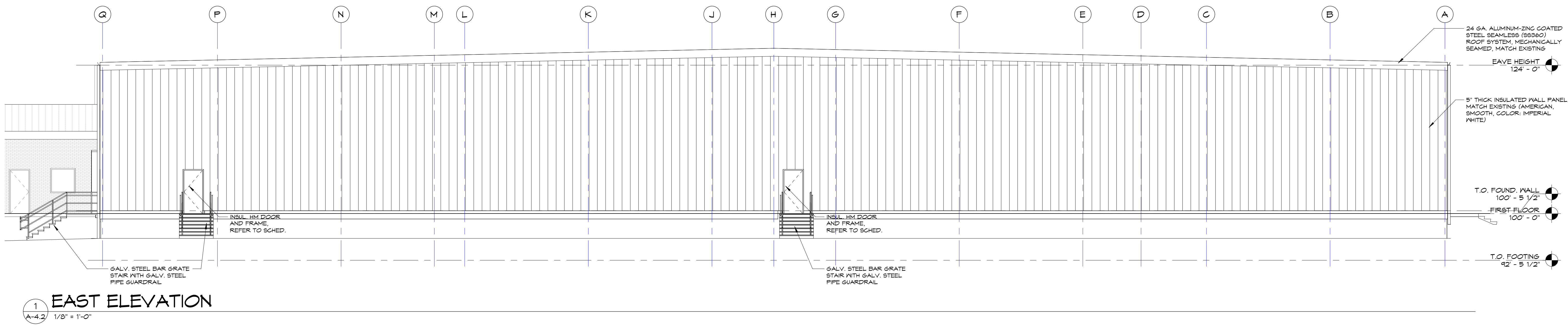
A-4.1



3 SOUTH ELEVATION
A-4.2 1/8" = 1'-0"



2 NORTH ELEVATION
A-4.2 1/8" = 1'-0"



1 EAST ELEVATION
A-4.2 1/8" = 1'-0"

PRELIMINARY - NOT FOR CONSTRUCTION

Gries Architectural Group Inc.
 HUDSON OFFICE: 400 South 2nd Street, Suite #155, Kaukauna, WI 54949
 Phone: 920-722-2445
 www.gries.design

©Copyright. This Print/Computer File Is The Exclusive Property Of Gries Architectural Group, Inc. Use Only For Purpose Which Learned. Copying Or Reproducing Is Prohibited. Return Upon Request.

A BUILDING ADDITION FOR:
HOLLAND COLD STORAGE
 KAUKAUNA, WI

REVISION HISTORY		
NO.	DESCRIPTION	DATE

date: 02-20-2026
 job: 25-104
 d. by: LAK

A-4.2