



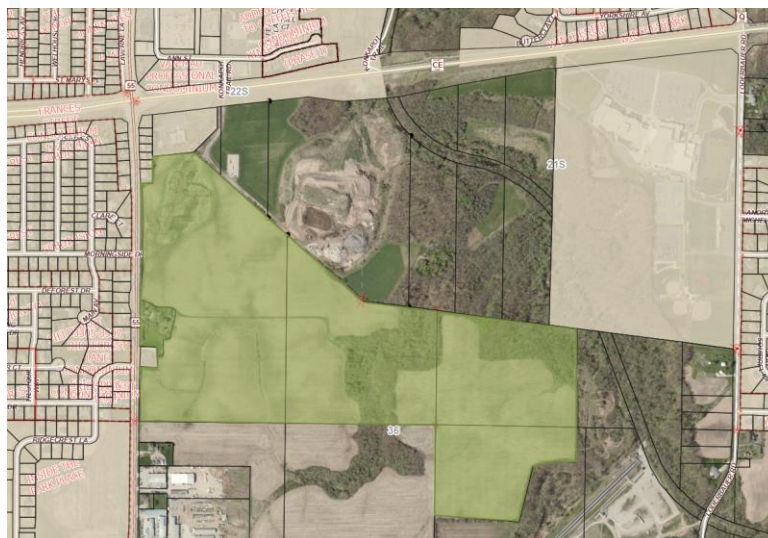
MEMO

PLANNING AND COMMUNITY DEVELOPMENT

To: Legislative Committee
From: Dave Kittel, Director of Planning and Community Development
Date: 1/29/2025
Re: Annexation Petition Review-Parcel 030064701, 030066900, 030064200, 030064600 & 030064700

The Kaukauna Area School District has submitted an annexation request for direct annexation of parcels 030064701, 030066900, 030064200, 030064600 & 030064700. This annexation request is a total of 144.576 acres and will assist in facilitating the development of the new middle school on this property as well as open new land for future development potential for the City. This annexation request aligns with the City's Comprehensive Plan and assists in meeting goals stated in economic development, Utilities and Community Facilities as well as aligning with the City's future land use map. As it currently stands, the property would default to Residential Single family for zoning if the annexation is approved.

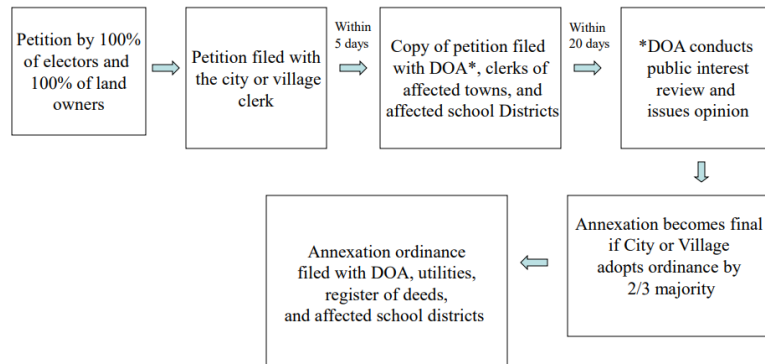
Attached is the Annexation Petition for greater detail and below is simple map showing the proposed annexation area:



The Plan Commission has reviewed and is recommending approval of the annexation to common Council. The Department of Administration has also reviewed the request and agrees the annexation is in the public's interest. See blow chart for more information and links to more information on the annexation process:

Process of a Unanimous Consent Annexation

See section [66.0217\(2\)](#) of the Wisconsin Statutes



*DOA involvement not applicable in counties with less than 50,000 persons

<https://doa.wi.gov/Pages/LocalGovtsGrants/Annexation.aspx>

Recommendation:

To approve the Ordinance for Annexation for Kaukauna Area School District parcels- 030064701, 030066900, 030064200, 030064600 & 030064700 and recommend the same to Common Council.

