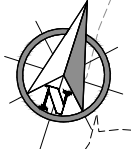
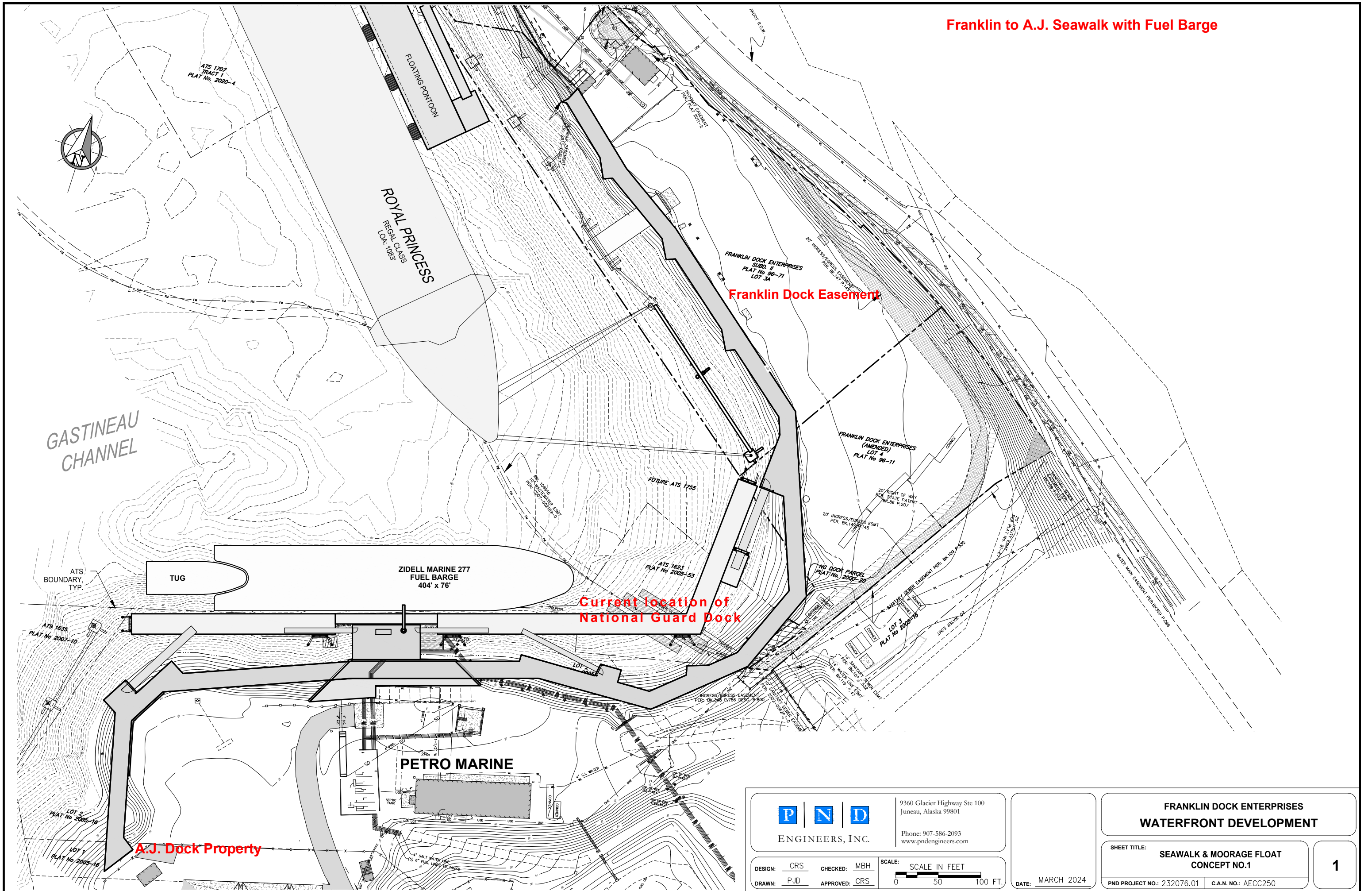


Franklin to A.J. Seawalk with Fuel Barge



GASTINEAU CHANNEL

ROYAL PRINCESS
REGAL CLASS
LOT 1053

FRANKLIN DOCK ENTERPRISES
SUBD. II
PLAT No 96-71
LOT 3A

Franklin Dock Easement

FRANKLIN DOCK ENTERPRISES
(AMENDED)
LOT 4
PLAT No 96-11

Current location of
National Guard Dock

TUG

ZIDELL MARINE 277
FUEL BARGE
404' x 76'

PETRO MARINE

A.J. Dock Property



9360 Glacier Highway Ste 100
Juneau, Alaska 99801
Phone: 907-586-2093
www.pndengineers.com

DESIGN: CRS CHECKED: MBH SCALE: SCALE IN FEET
DRAWN: PJD APPROVED: CRS 0 50 100 FT.

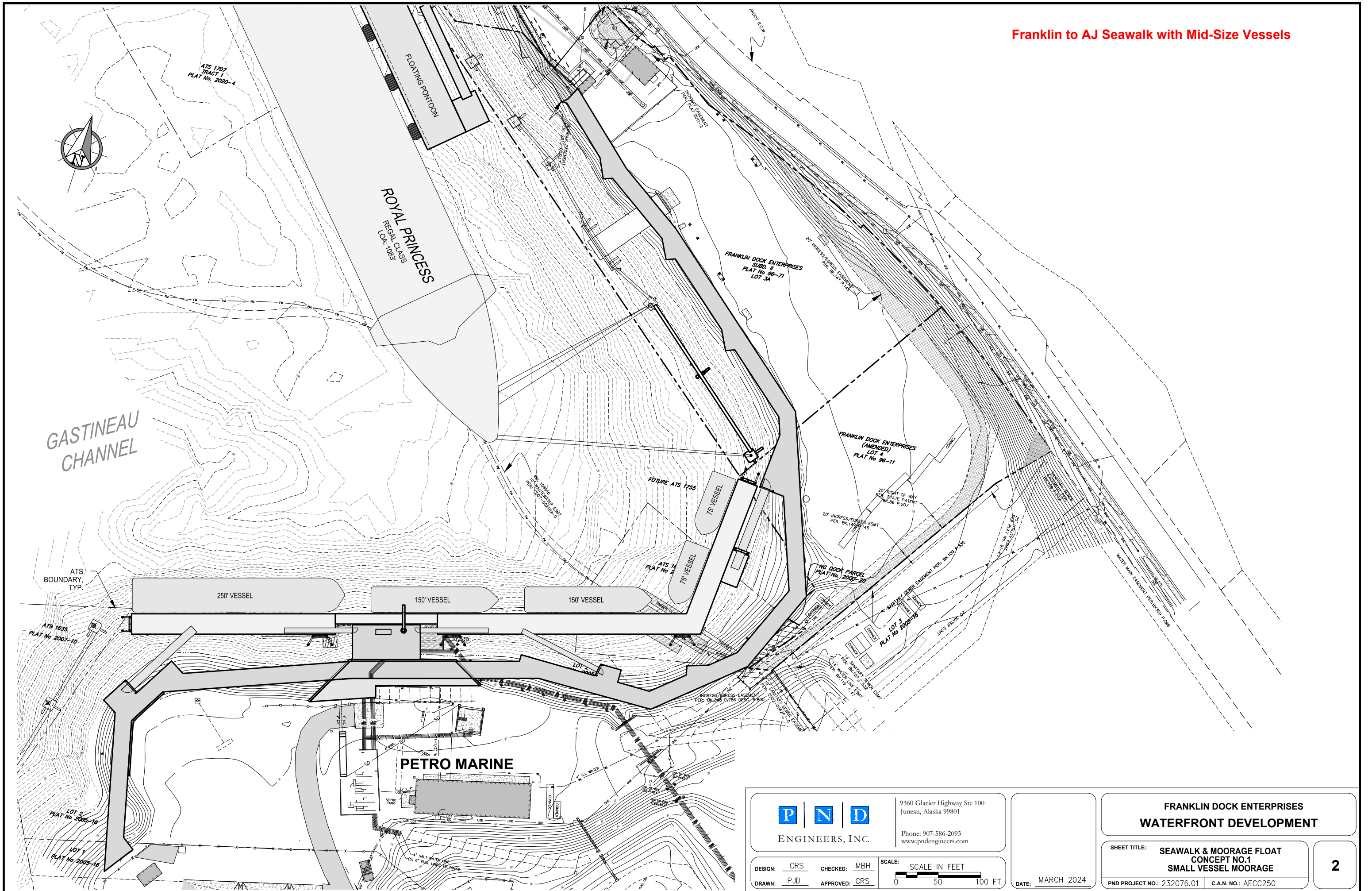
DATE: MARCH 2024

FRANKLIN DOCK ENTERPRISES
WATERFRONT DEVELOPMENT

SHEET TITLE: SEAWALK & MOORAGE FLOAT
CONCEPT NO.1

1

PND PROJECT NO.: 232076.01 C.A.N. NO.: AECC250



		9360 Glacier Highway Ste 100 Juneau, Alaska 99801 Phone: 907-586-2093 www.pndengineers.com	
DESIGN: CRS	CHECKED: MBH	SCALE: SCALE IN FEET 	
DRAWN: PJD	APPROVED: CRS		

DATE: MARCH 2024

FRANKLIN DOCK ENTERPRISES WATERFRONT DEVELOPMENT	
SHEET TITLE: SEAWALK & MOORAGE FLOAT CONCEPT NO.1 SMALL VESSEL MOORAGE	
PND PROJECT NO.: 232076.01	C.A.N. NO.: AECC250