



Juneau International Airport Master Plan Update



City and Borough of Juneau Assembly

June 2, 2025

Agenda

- Welcome and Introductions
- Master Planning Process
- Schedule
- Work Completed
- Public Involvement
 - Website
 - Technical Advisory Committee
 - Public Open House
 - CBJ Assembly
- Work Underway/Work Remaining
 - Aeronautical Survey
 - Airport Layout Plan Drawing Set/
Exhibit "A" Property Inventory Map Update
- Questions





Master Planning Process

Juneau International Airport



What is a Master Plan?

- Projection of the Airport's ultimate growth over a 20-year timeframe
- Plan for the ultimate development of physical facilities
- Development guide, including timing and costs, that considers adjacent land uses and environmental issues
- Step-by-step description of the logic used in formulating the plan
- Display of the plan in graphical and written form
- Positions the Airport to compete for FAA funding

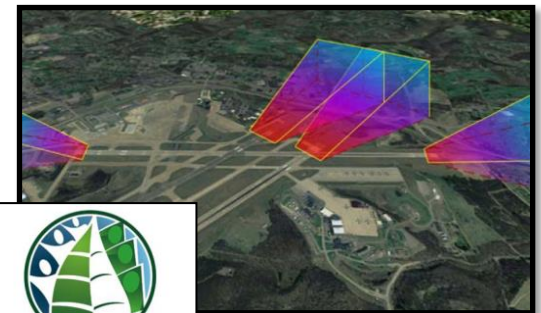
Major Objectives

- Optimize the operational efficiency, effectiveness, capability and safety of the airport
- Enhance the economic and social value of the airport
- Meet the long-range aviation needs of the community
- Ensure that current and future airport plans are environmentally compatible and in harmony with local and regional plans and objectives
- Provide planning options that are consistent with these project goals
- Comply with FAA planning guidance and current Advisory Circulars.



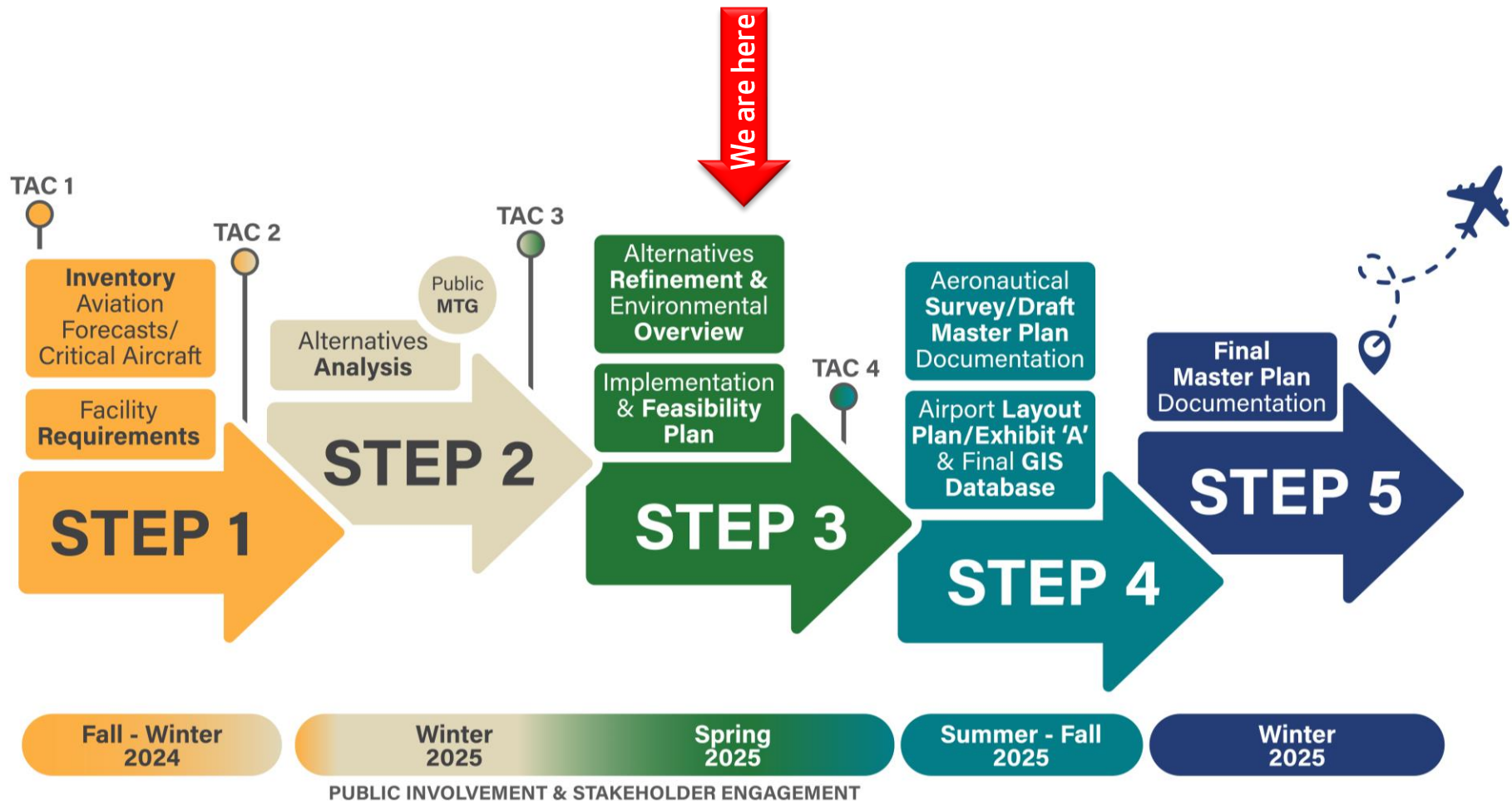
Airport Master Planning Issues

- Recommendations from previous planning efforts
- Changes since previous master plan
- Changes in FAA Airport Design guidance
- Aerial survey and mapping in accordance with FAA's Airports Geographic Information System
- Airspace and land use compatibility
- Optimize land utilization
- Maximize revenue opportunities
- Sustainable solutions for the future





Master Planning Process





Work Completed
Juneau International Airport

Overview of Airport Facility

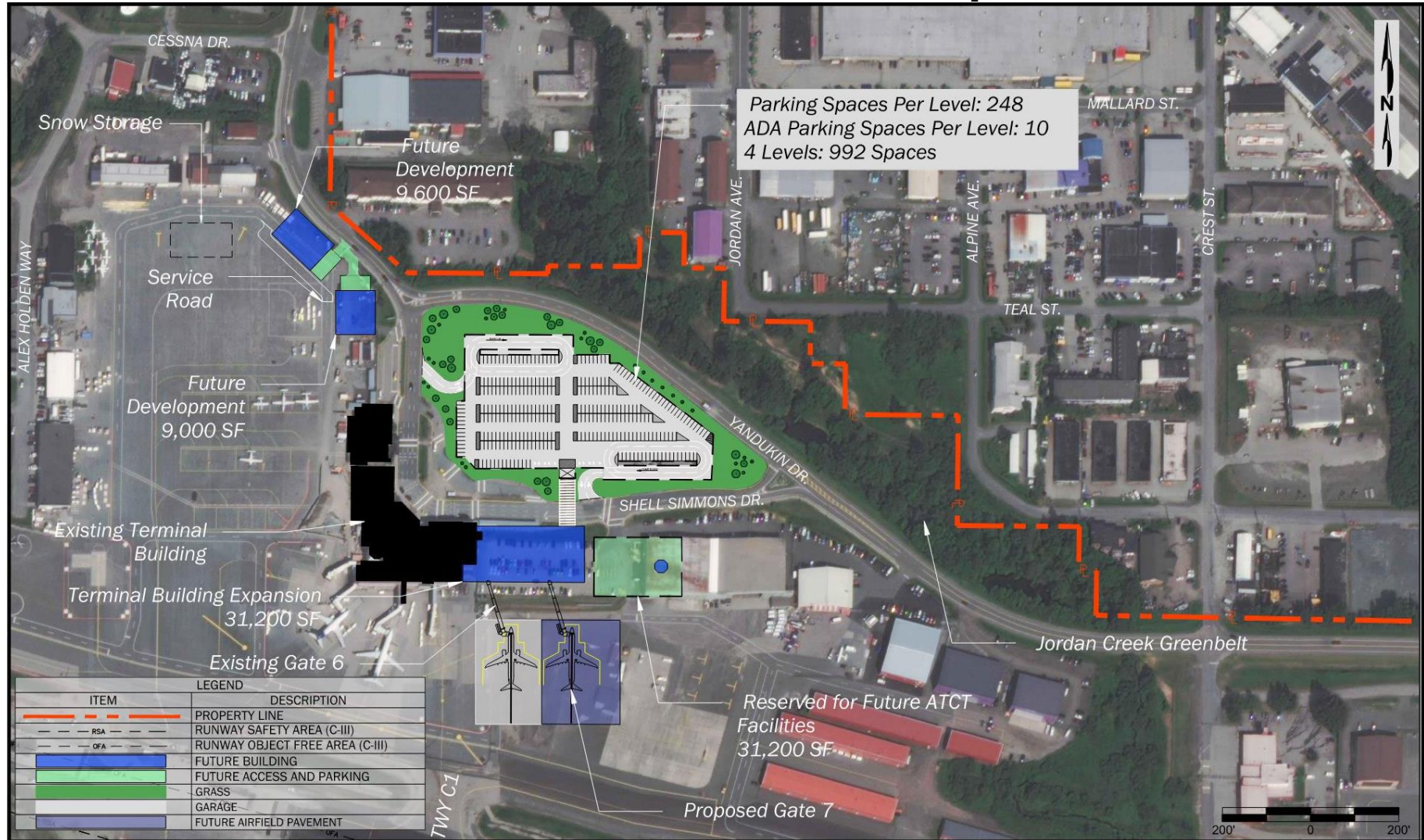
- Non-hub commercial service airport
 - 662 acres
- Runways capable of handling commercial and float plane aircraft
 - Runway 8-26 – 8,857' x 150'
 - Runway 8W-26W – 4,000 x 150'
- Airport Traffic Control Tower
- Non-precision instrument approaches
- Cargo/ground handling, fueling, Fixed Base Operator and aircraft maintenance services
- Air cargo service to meet logistics and distribution needs
- General aviation facilities



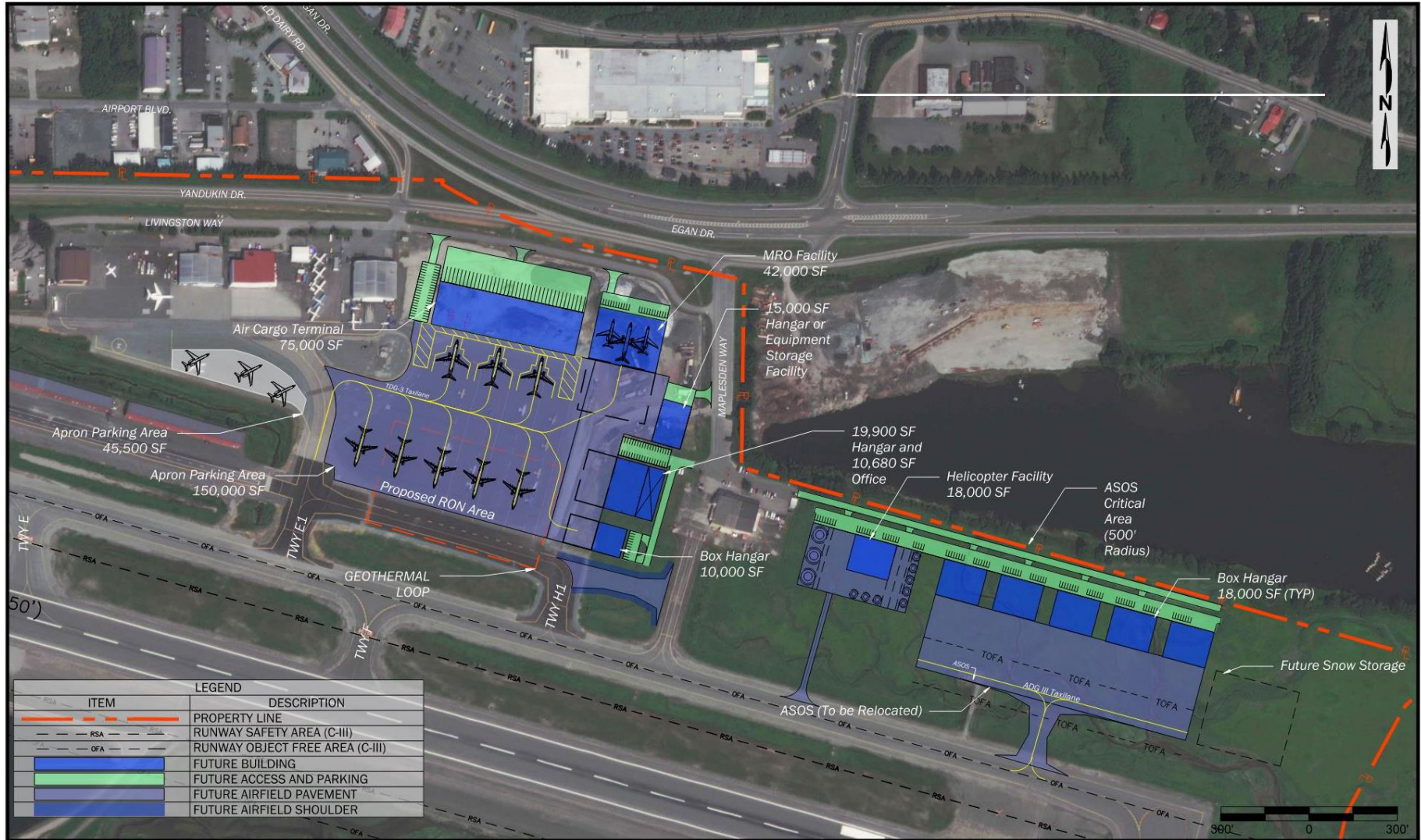
Airfield Development



Terminal Area Development



Northeast Development Area



Northwest Development Area





Public Involvement Process

Juneau International Airport

Public Involvement

- **Technical Advisory Committee**
 - Diverse group of key stakeholders
 - Review meetings at key milestones
 - Role: Provide advisory input related to aviation, community, planning and legal issues
- **Public Open House Meeting**
- **Project Status Briefings**
 - Airport Board
 - City/Borough of Juneau
 - Local Organizations



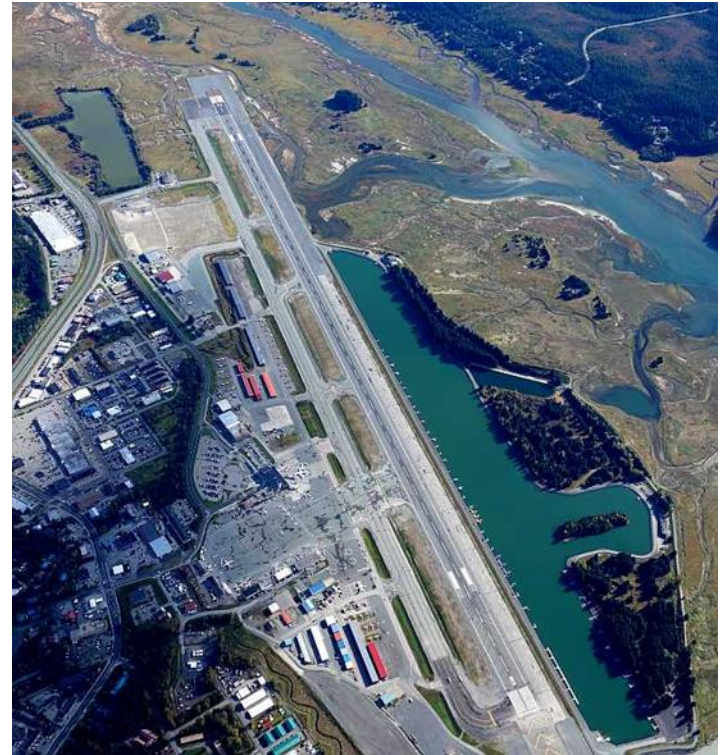


Remaining Work

Juneau International Airport

Working Papers

- Working Paper 4
 - Alternative Refinement
 - Environmental Overview
- Working Paper 5
 - Implementation Plan
- Final Technical Report





ALP/Exhibit “A” Update

- **Aeronautical Survey and Mapping**
 - June 2025 – Dictated by Weather Conditions
 - Required by FAA to maintain updated Airport Geographic Information System (AGIS)
- **Airport Layout Plan Drawing Set Update**
- **Exhibit “A” Property Inventory Map Update**
- **ALP is approved by the FAA**

Your thoughts . . .

