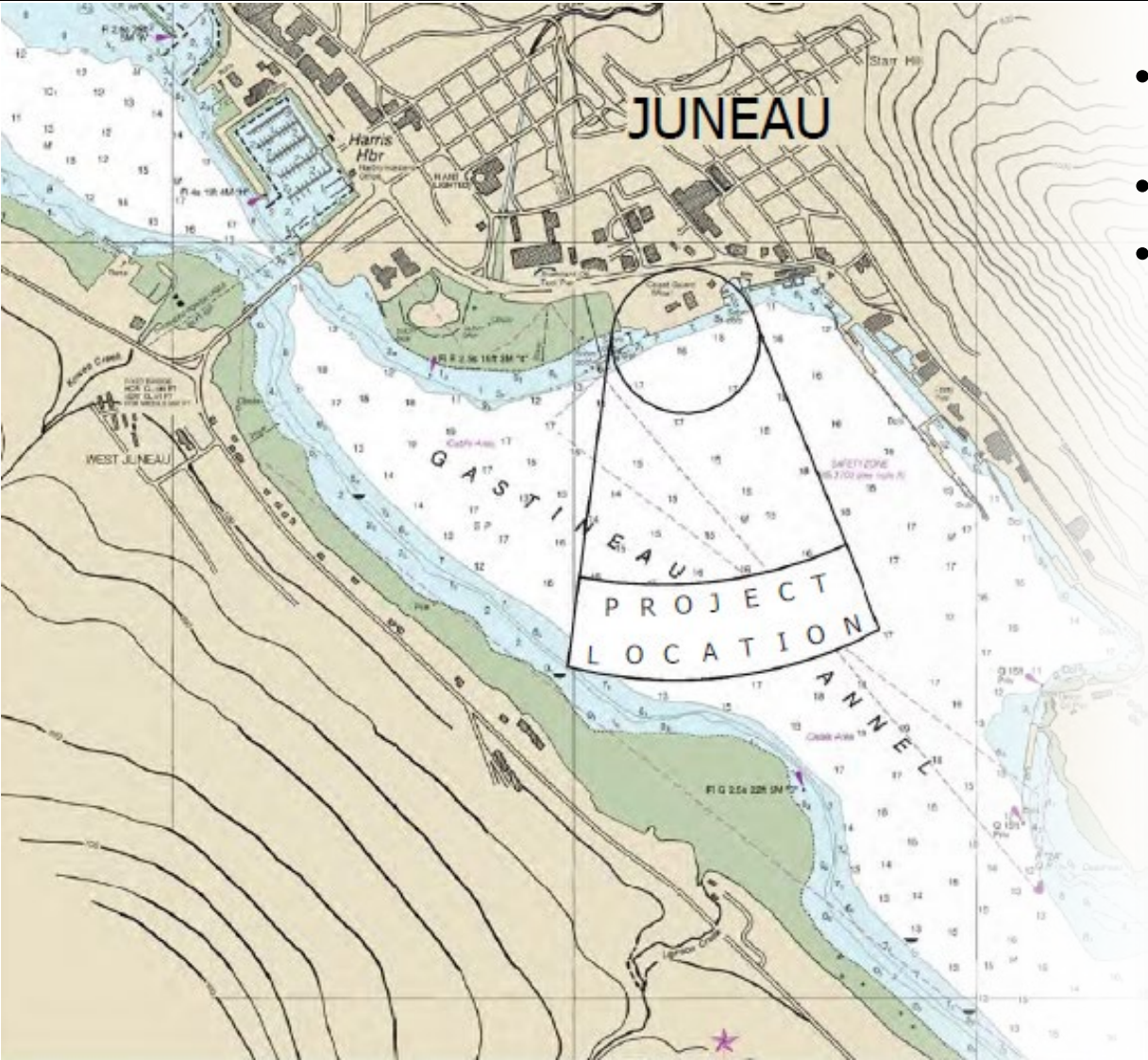


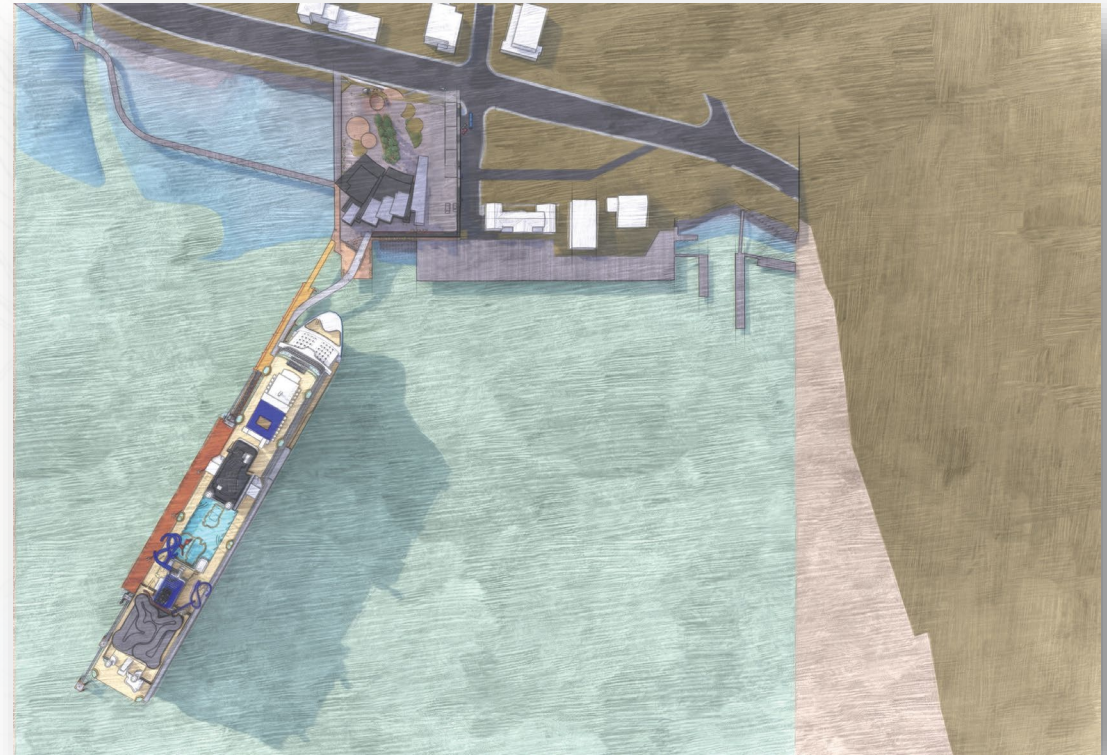


HUNATOTEM
CORPORATION

Áak'w Landing



- Welcome Center, retail, dining, public park, and underground parking
- Indigenous knowledge, science, and cultural center
- Floating dock



Recent Public Engagement

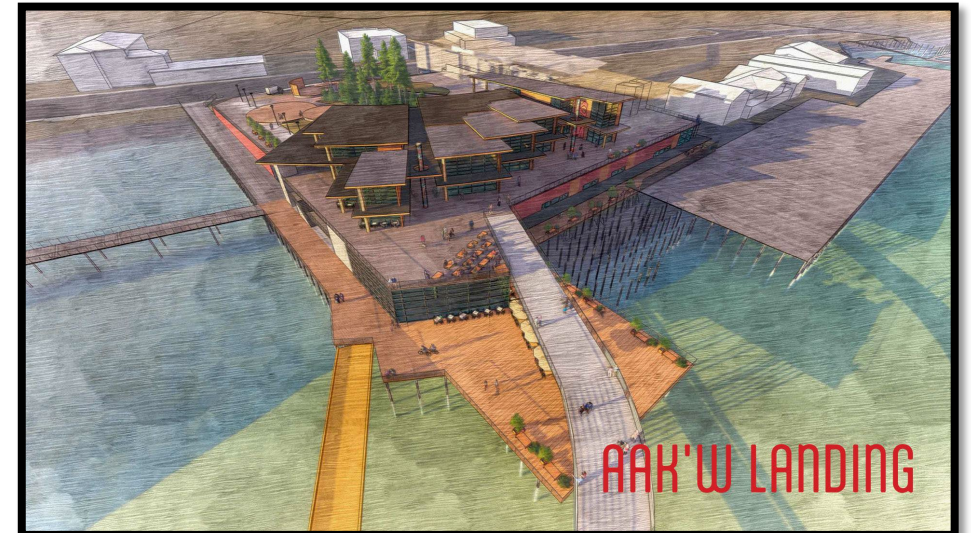


- November
 - CBJ LHED committee
 - Juneau Gastineau Rotary
 - 58 Innovators Rotary
 - The Group
 - DBA
 - Juneau Rotary Club
- December
 - CBJ COW
- January
 - Juneau Chamber
 - First Things First AK Foundation
 - Capital Civic Center
 - Glacier Valley Rotary
 - KINY Problem Corner
- January cont.
 - DBA Annual Meeting
 - CBJ Open House meetings
 - FTFK & KINY podcast
- February
 - Capital project committee
 - The Group (update)
 - DBA (update)
 - Juneau Navy League
 - CBJ LHED & COW
 - Huna Totem Open House (Spice)
- Conferences
 - ATIA: cultural tourism panel
 - SE Conf: tourism panel
 - CLIA PNW: indigenous tourism panel

Public and Stakeholder Impacts on Project



- Visitor Industry Task Force recommendations ➡ CUP conditions
 - 1 large ship, no hot berthing, high quality, year-round use, shore power
- Juneau Tourism Surveys
 - Public park, parking, seawalk extension, cultural center
- US Coast Guard
 - Removed “fingers” from dock to optimize use by other vessels, in emergencies, and wind/wave conditions
- Navigability Study
 - Adjusted dock alignment
- AJT Mining Properties
 - Remove derelict dock
- CBJ Open House Meetings (team reviewing ideas now)
 - Year-round use: cultural and educational programs; incorporate all cultures
 - Outdoor spaces: amphitheater, festivals, markets, seamless seawalk, public binoculars, restrooms



Navigability Study

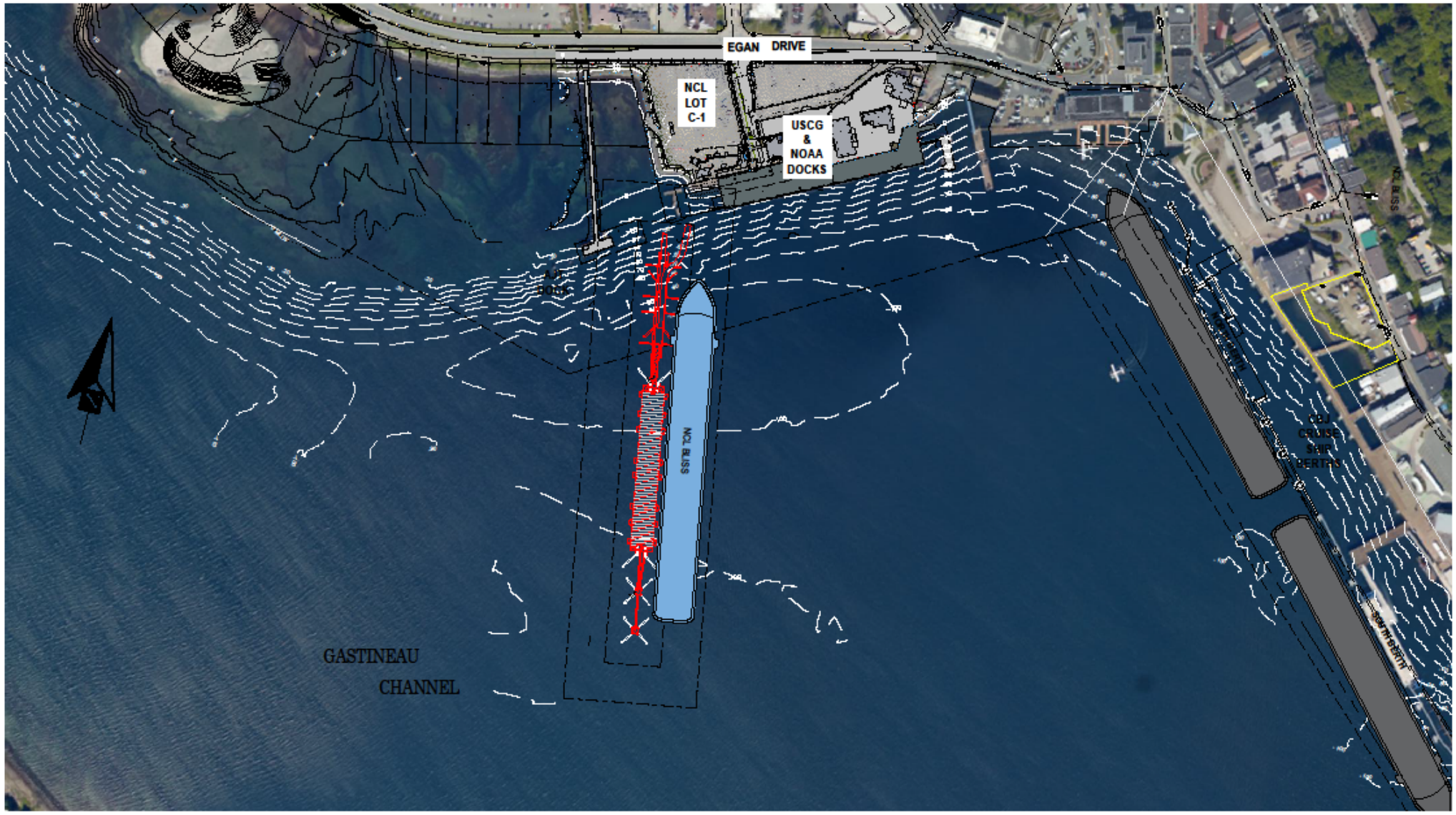


HUNATOTEM
CORPORATION

Navigability Study



- Conducted by Marine Exchange of Alaska (via PND Engineers)
 - Considered various dock orientations
 - Addressed maritime activities (vessel and floatplane) and existing dock infrastructure in the area
- Utilized multiple sources of information
 - Automatic Identification System (AIS) data
 - Currents, weather, and environmental data
 - Stakeholder discussions and information
- Planning navigation simulation
 - Work with experienced vessel pilots and masters



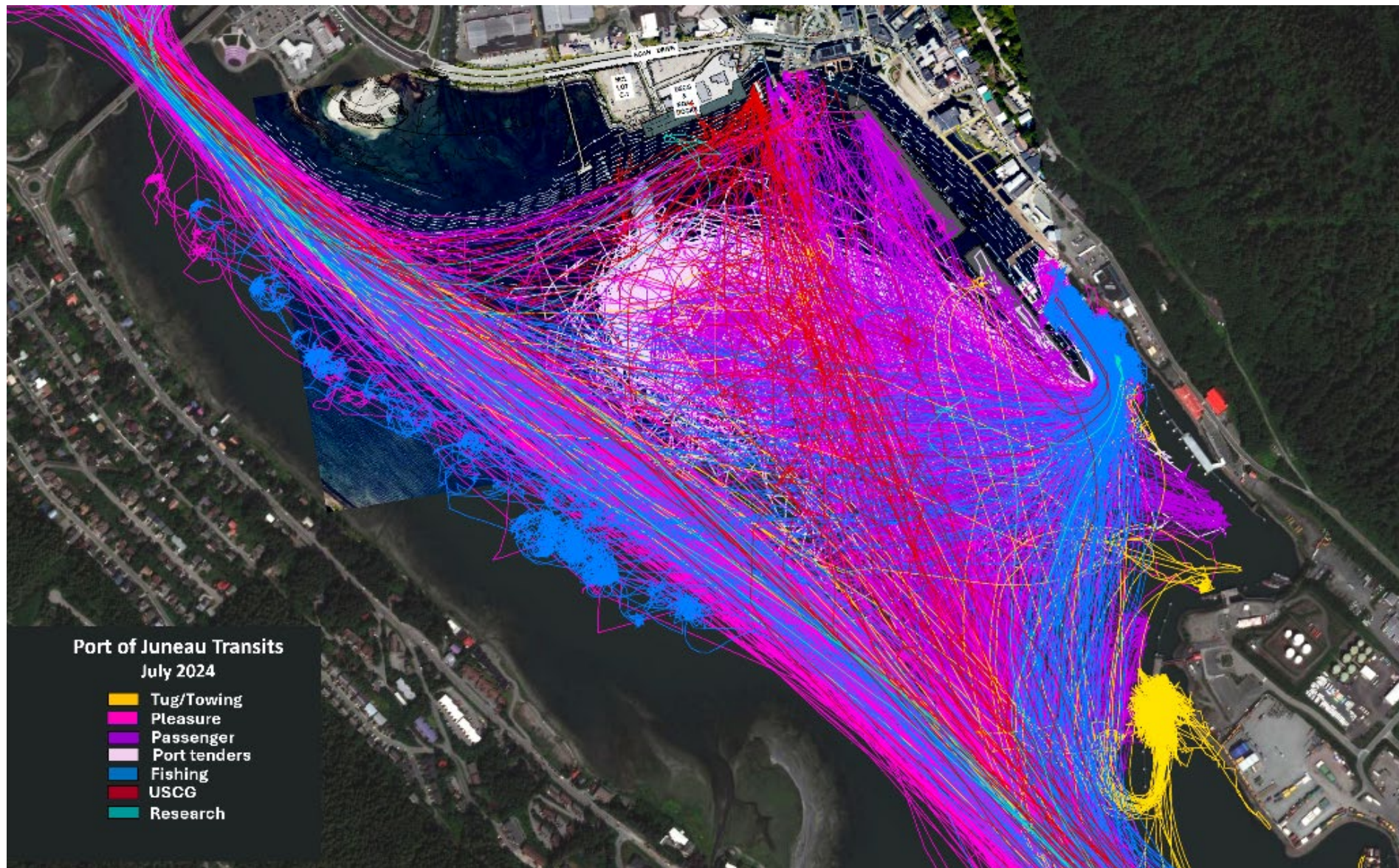
REVISIONS					
REV.	DATE	DESCRIPTION	OWN.	CRD.	APP.


ENGINEERS, INC.
 1560 Glacier Highway Ste 100
 Jones, Alaska 99601
 Phone: 907-586-2993
 Fax: 907-586-2019
 www.pndengineers.com

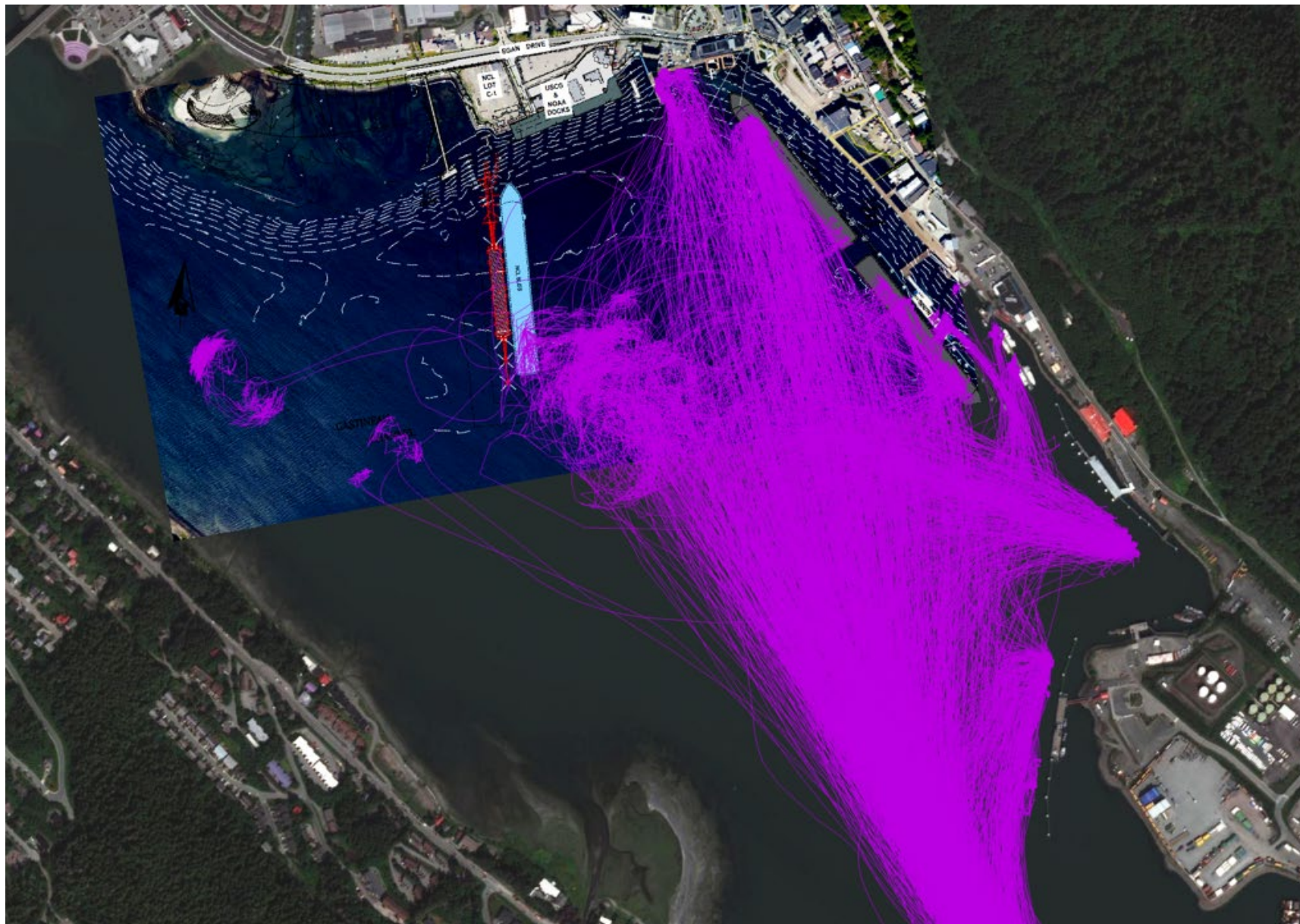
SCALE: **SCALE IN FEET**
 0 150 300 FT.

XX% DESIGN SUBMITTAL

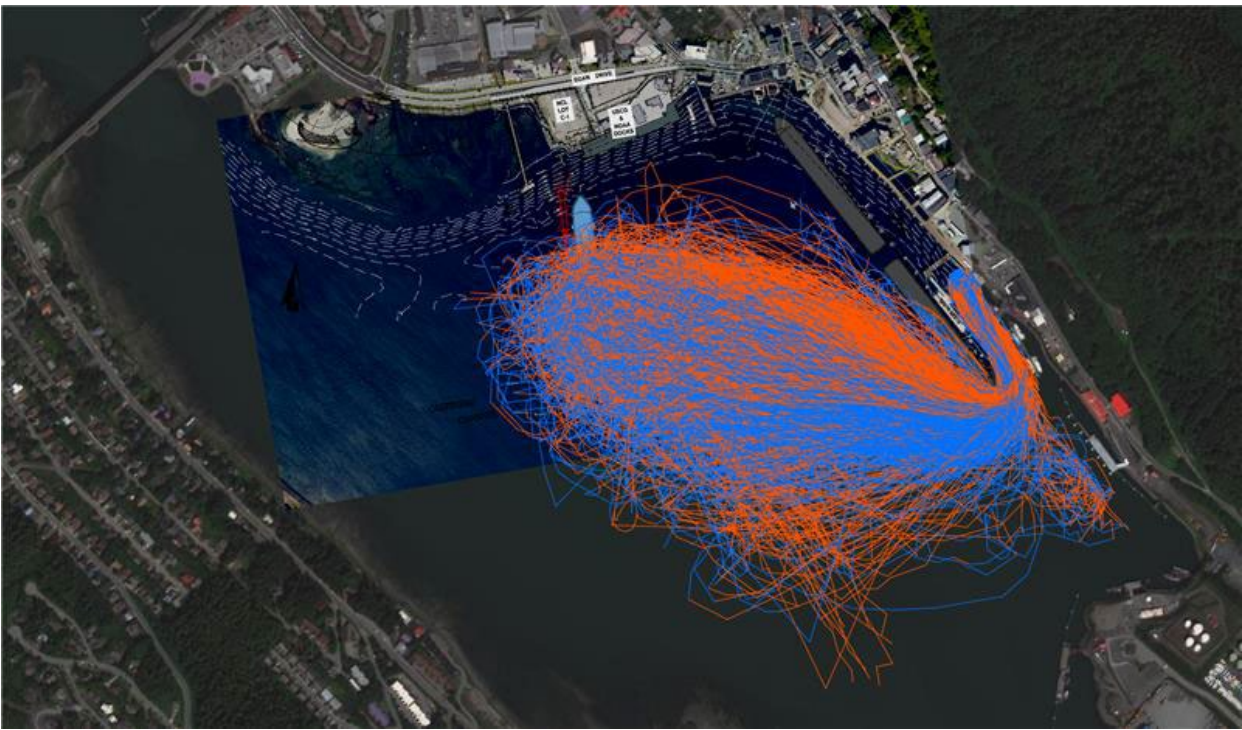
SHEET TITLE:
CONCEPT 3 REVISED
 PND PROJECT NO.: G.A.N. NO.: AEC250



All AIS equipped vessels operating in the port of Juneau during the July 2024 cruise season with the proposed HTD.

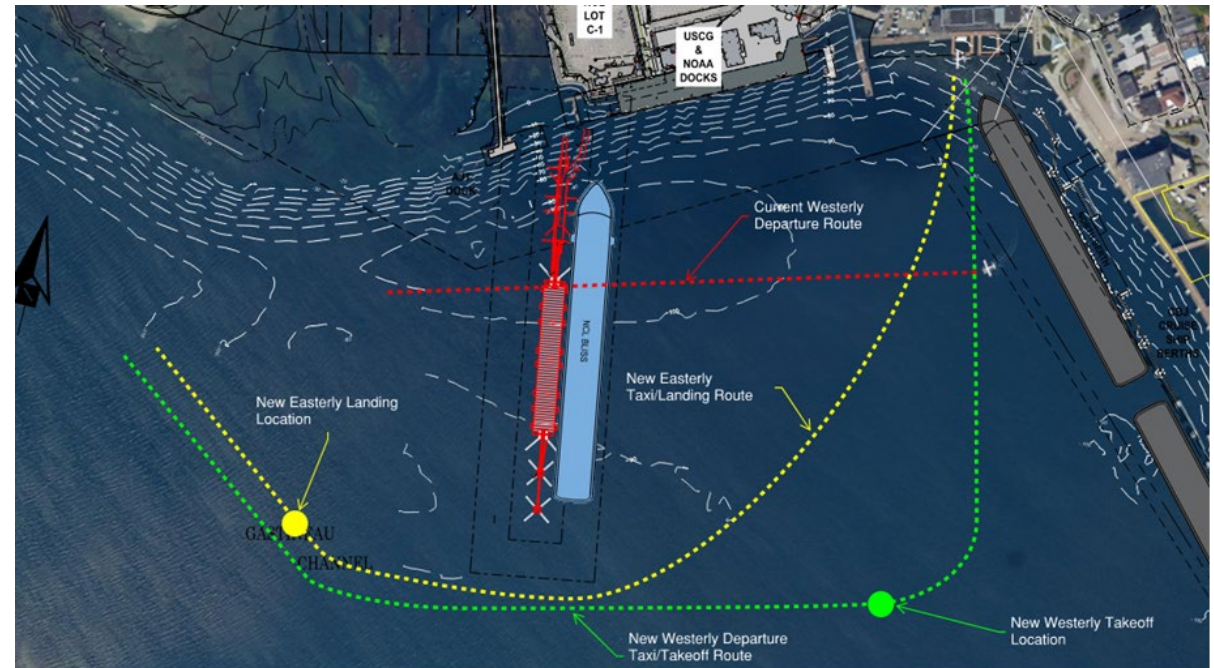


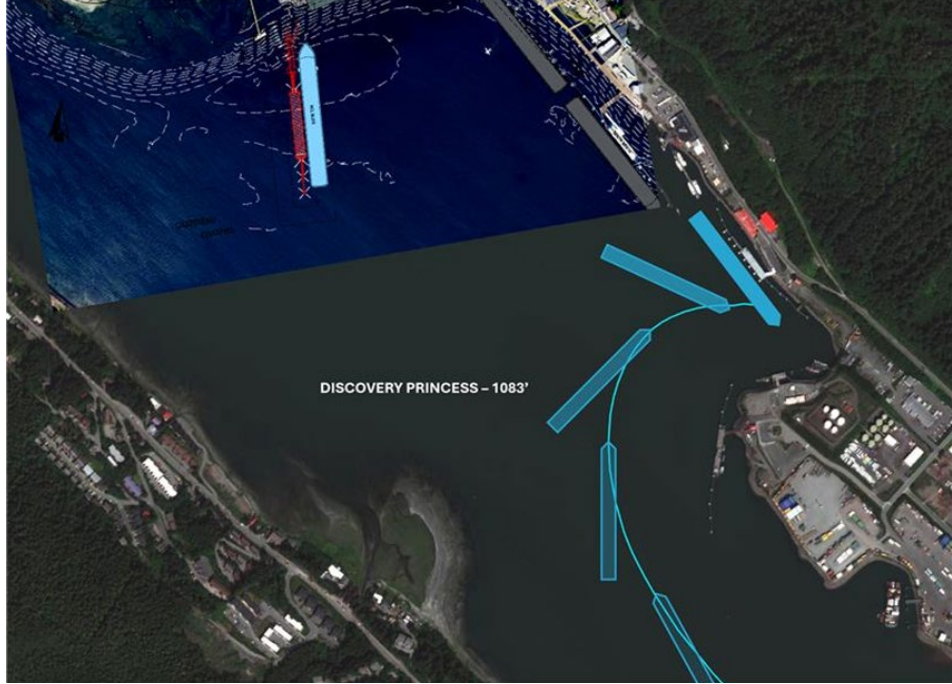
AIS tracks of all cruise ships operating in the port of Juneau during the July 2024 cruise season with the HTD overlaid.



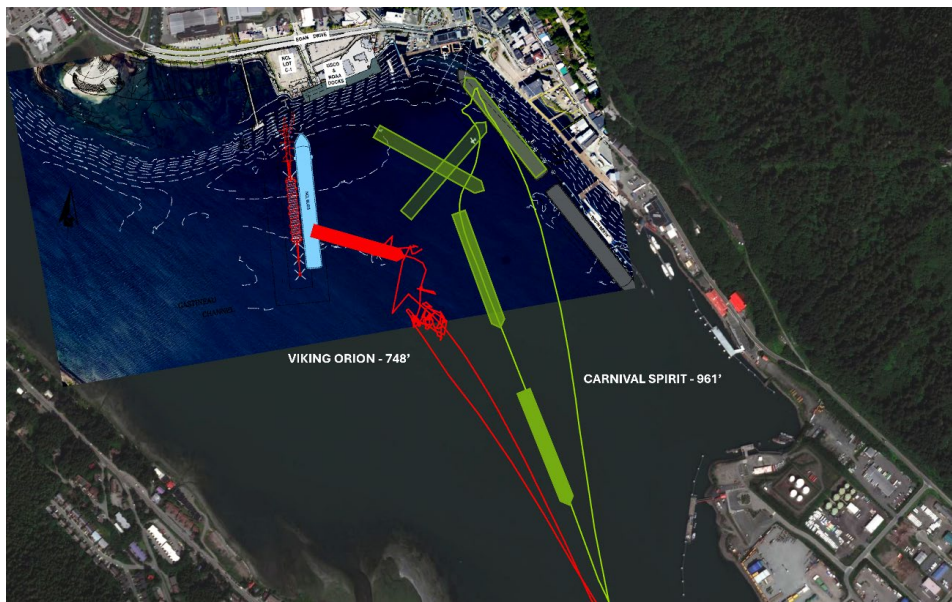
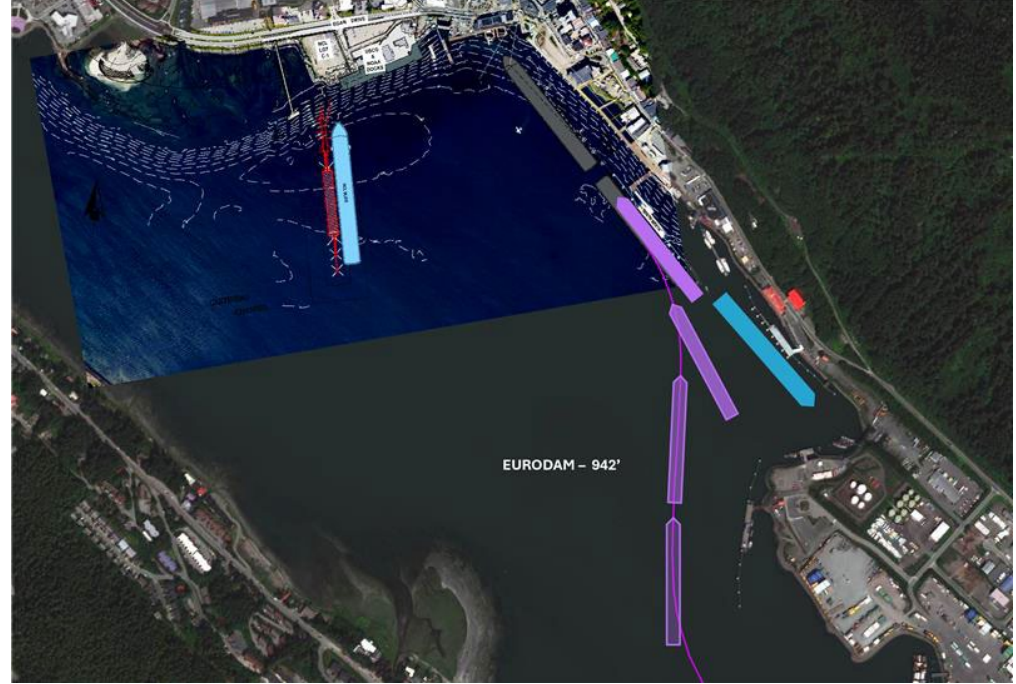
Cruise ship lifeboat transits (900 eastbound and 900 westbound) to and from port with passengers and crew in 2024. Transits cross the path of floatplanes landing and taking off.

Approximate new floatplane takeoff and landing routes. Graphic provided by Wings Airways.

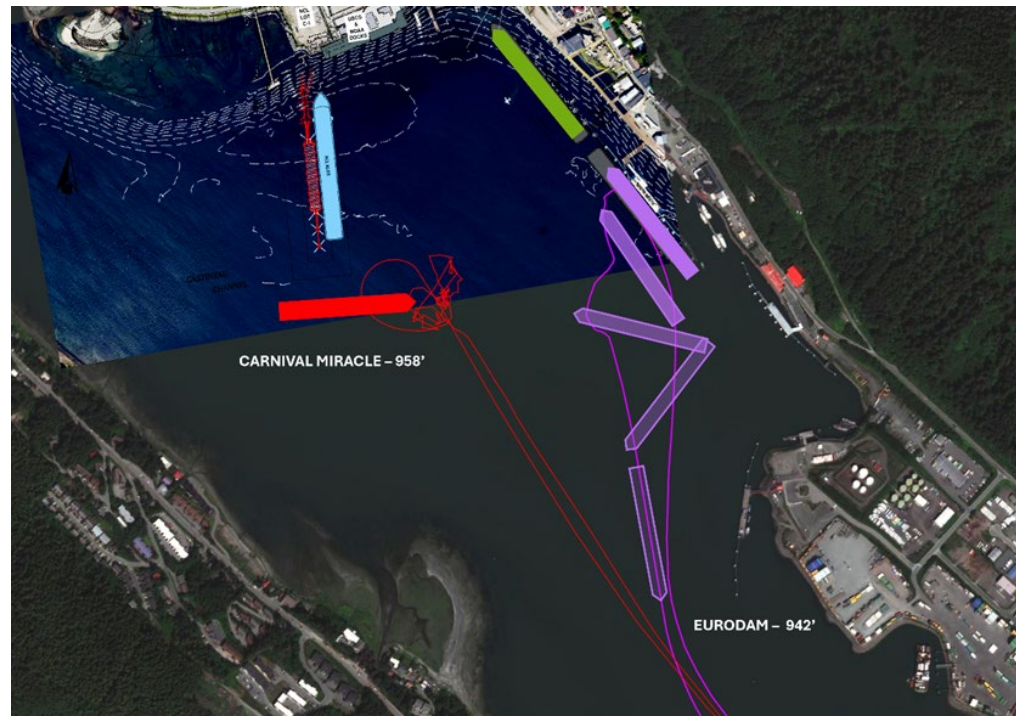


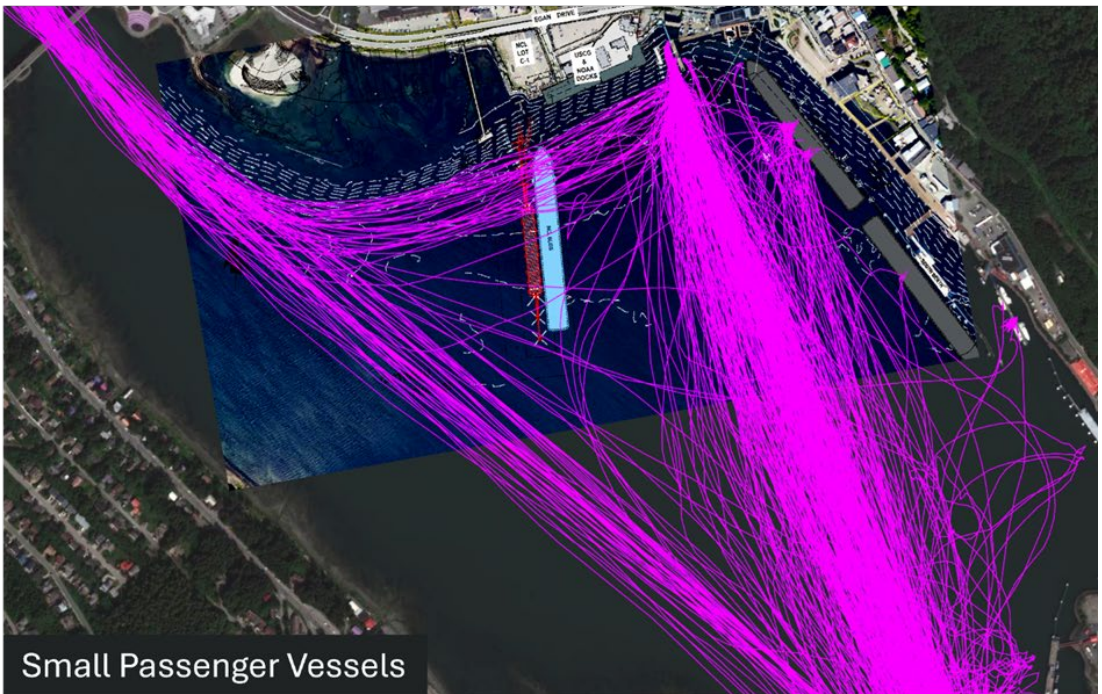
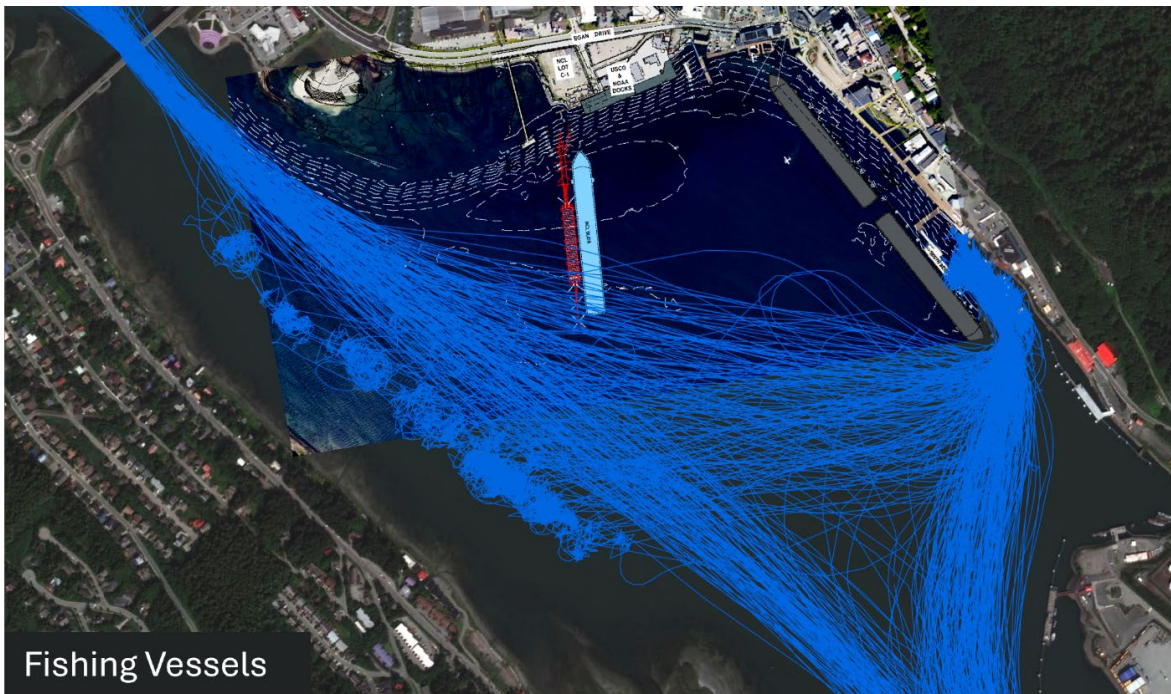
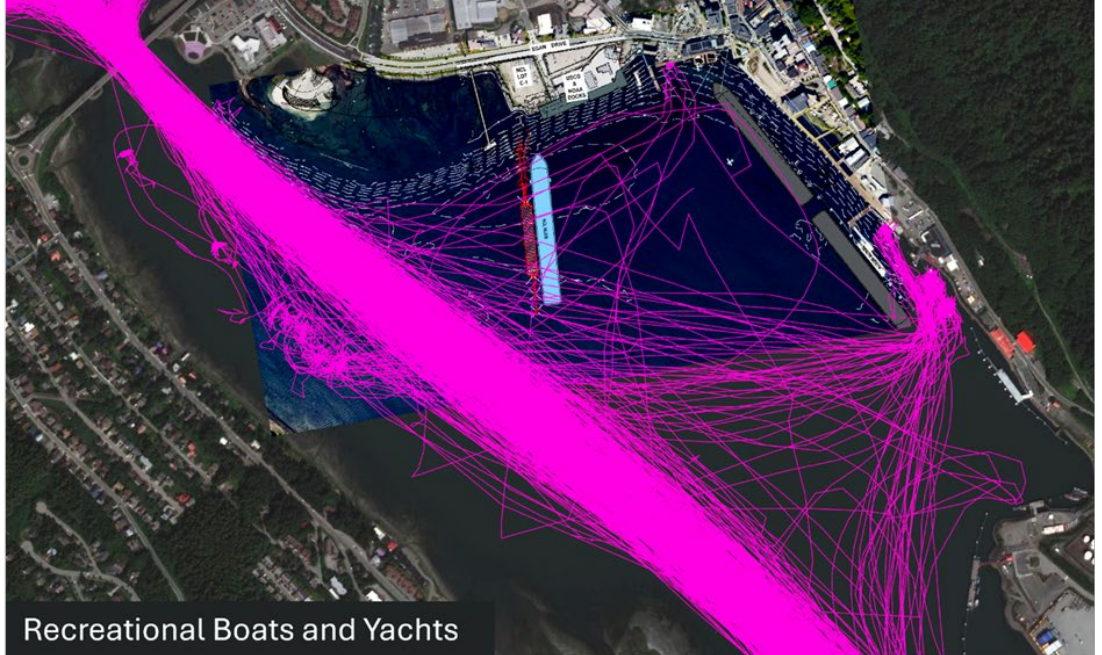
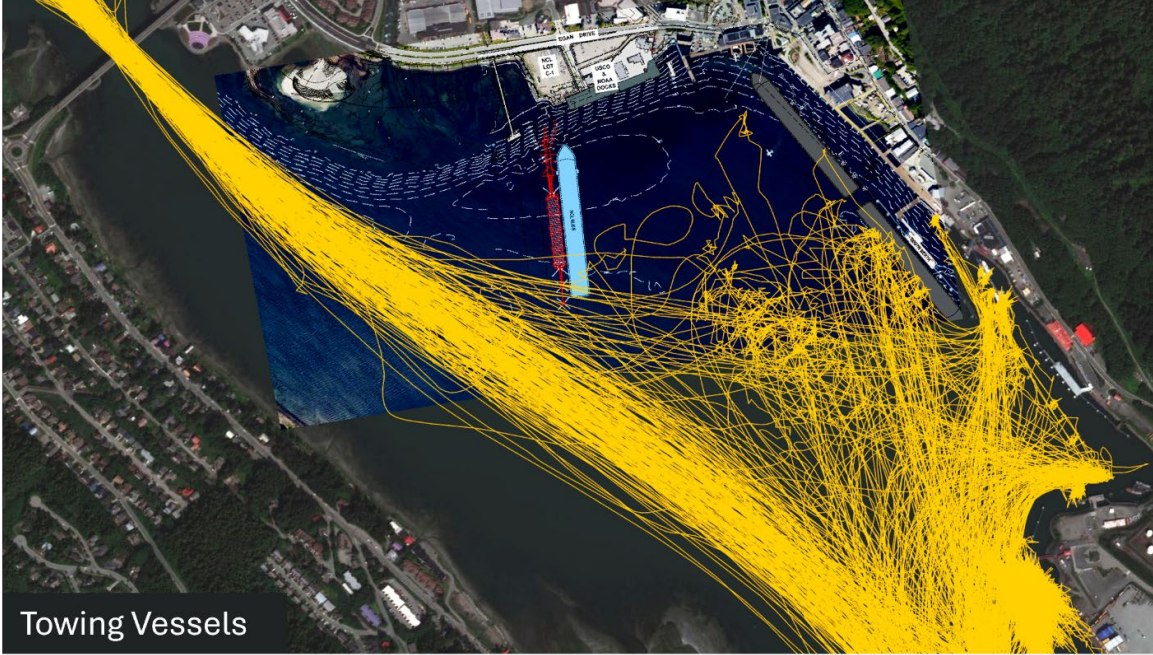


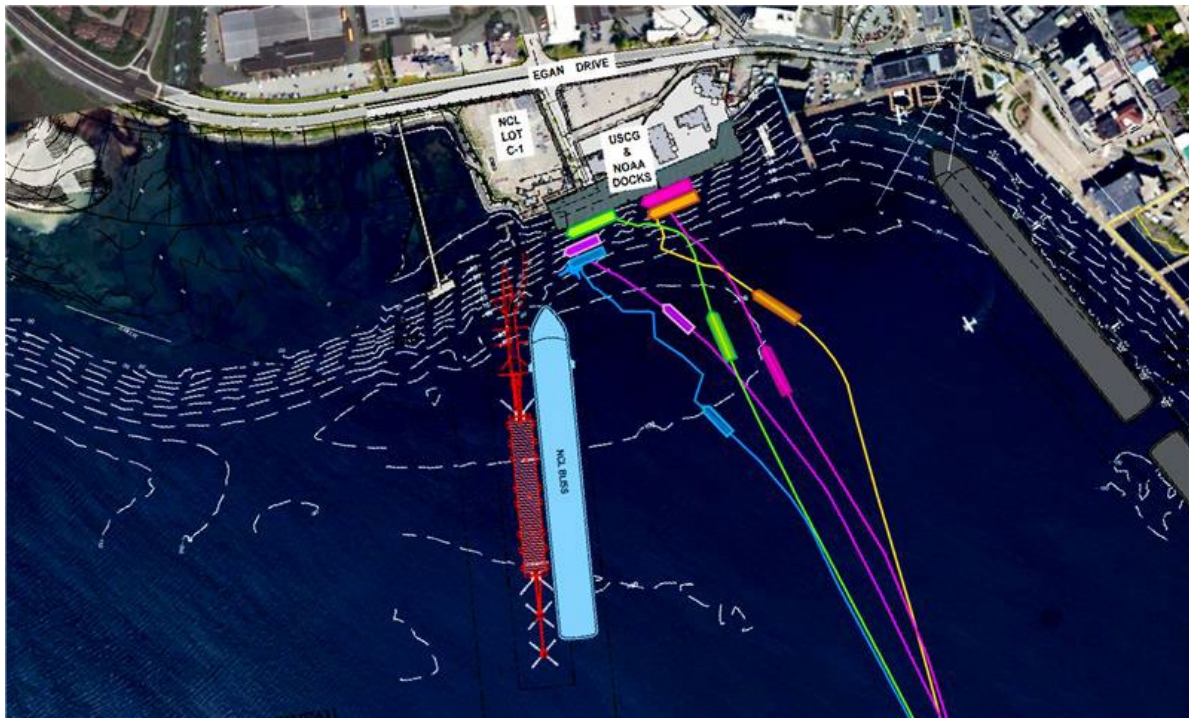
Arrivals



Departures,
with
anchored
vessel

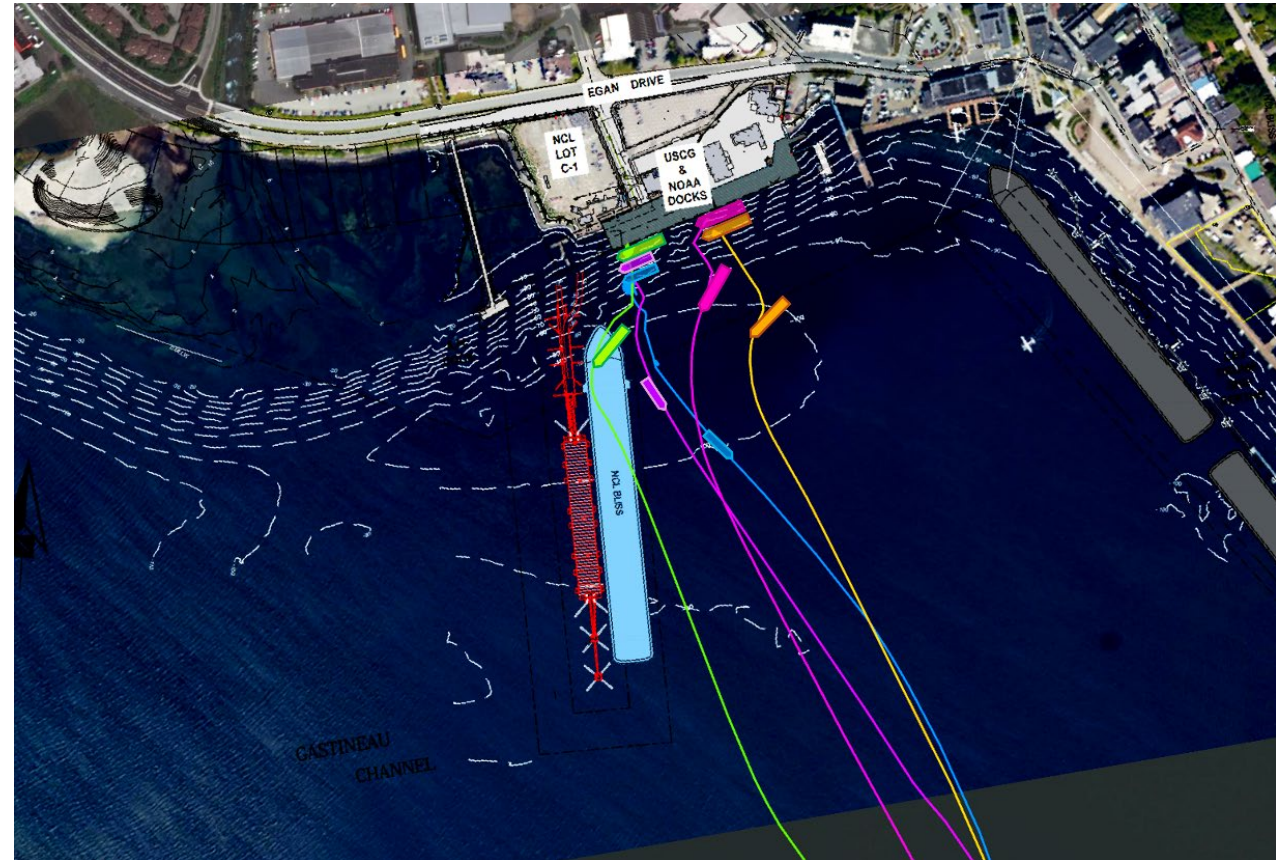


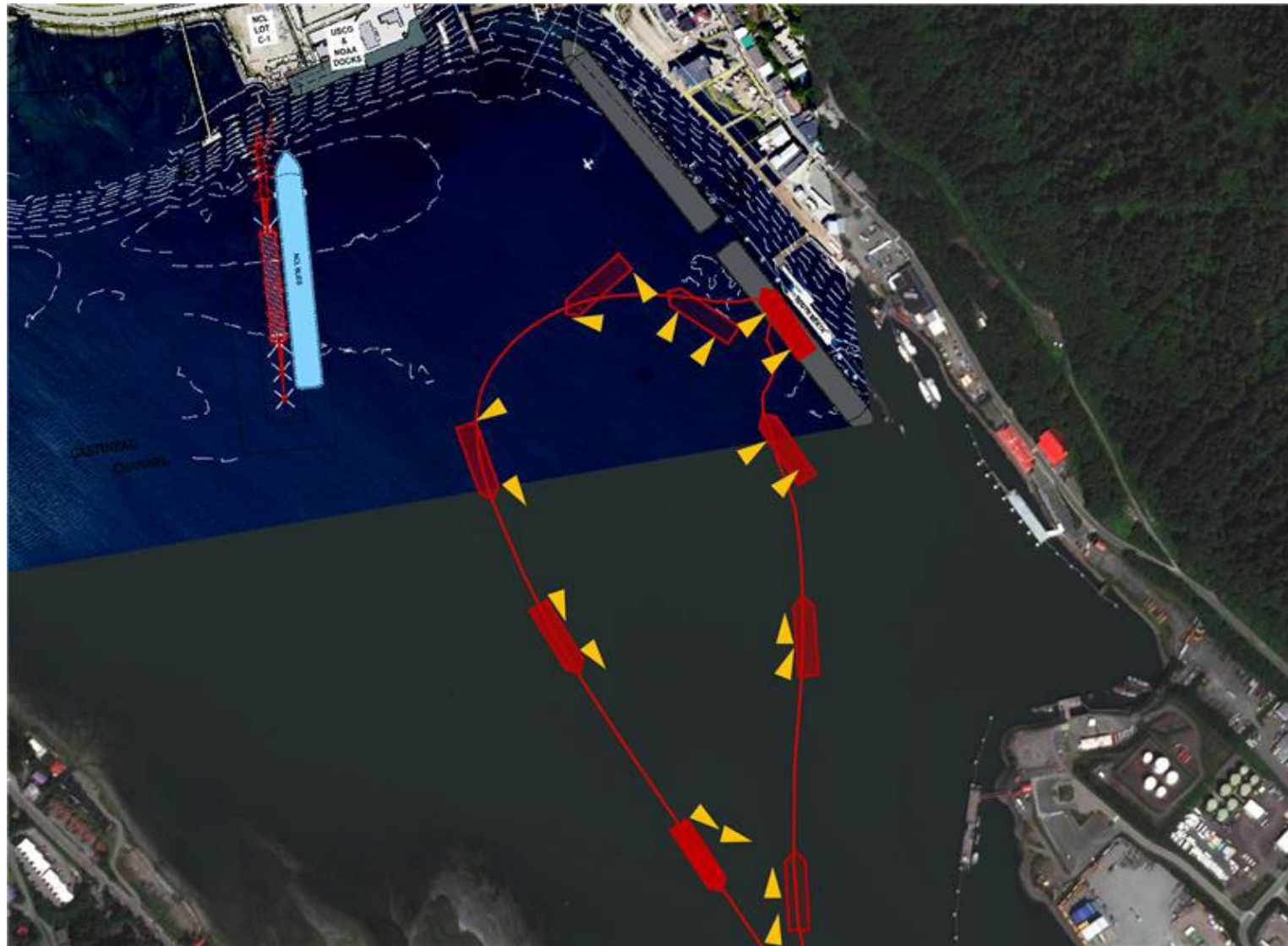




Maneuvers of Coast Guard 225-foot buoy tenders arriving at the Coast Guard's dock in Juneau in 2024 with the HTD dock overlaid.

Maneuvers of Coast Guard 225-foot buoy tenders departing the Coast Guard's dock in Juneau in 2024 with proposed HTD overlaid.





Maneuvers of Coast Guard 420-foot Coast Guard icebreaker HEALY to and from the Port of Juneau dock with two tugs assisting, with proposed HTD overlaid.

Traffic Impact Analysis



HUNATOTEM
CORPORATION

Traffic Impact Analysis



- Conducted by DOWL (via Jensen Yorba Wall)
- Mechanism for traffic engineers to analyze impacts of future developments and traffic flows
- Examined existing and future conditions
- Utilized mathematical models developed with ADOT&PF and observations/counts from 2024

Existing Conditions Traffic Operations



Intersection	AM LOS	AM Delay	AM Critical Movement	PM LOS	PM Delay	PM Critical Movement
Egan/Main	A	8	--	B	11	--
Egan/Whittier	A	7	--	B	19	--
Egan/10th	C	27	--	C	31	--
Egan/Willoughby	A/B	14	NB	A/A	9	EBL
Willoughby/Whittier	A/B	10	NB	A/B	12	NB
Egan/Glacier	A/A	9	SBR	B/B	12	SBR

Projected Conditions Traffic Operations (2035)



Intersection	AM LOS	AM Delay	AM Critical Movement	PM LOS	PM Delay	PM Critical Movement
Egan/Main	A	9	--	B	11	--
Egan/Whittier	B	16	--	B	17	--
Egan/10th	C	31	--	C	33	--
Egan/Willoughby	A/B	14	NB	A/A	9	EBL
Willoughby/Whittier	A/B	11	NB	A/B	14	NB
Egan/Glacier	A/B	13	SBR	B/C	16	SBR

Note: With mitigations described in the DOWL report (page 24) and in the JYW Executive Summary

Thank You!



HUNATOTEM
CORPORATION