



Port of Juneau

155 Heritage Way • Juneau, AK 99801
(907) 586-0292 Phone • (907) 586-0295 Fax

From: *Carl Uchytel*
Port Director

To: Public Works & Facilities Committee

Thru: (1) Docks & Harbors Operations-Planning Committee **approved 1/22/24**
(2) Docks & Harbors Board
(3) City Manager

Date: January 22nd, 2025

Re: LONE SAILOR MEMORIAL

1. At the September 26th, 2024 Docks & Harbors Board meeting, members from the Pioneers of Alaska presented a plan to erect a statue of the [Lone Sailor](#) along the Juneau waterfront. The “United States Navy Memorial” oversees the casting of the statue and the authorization of placement. From their website:

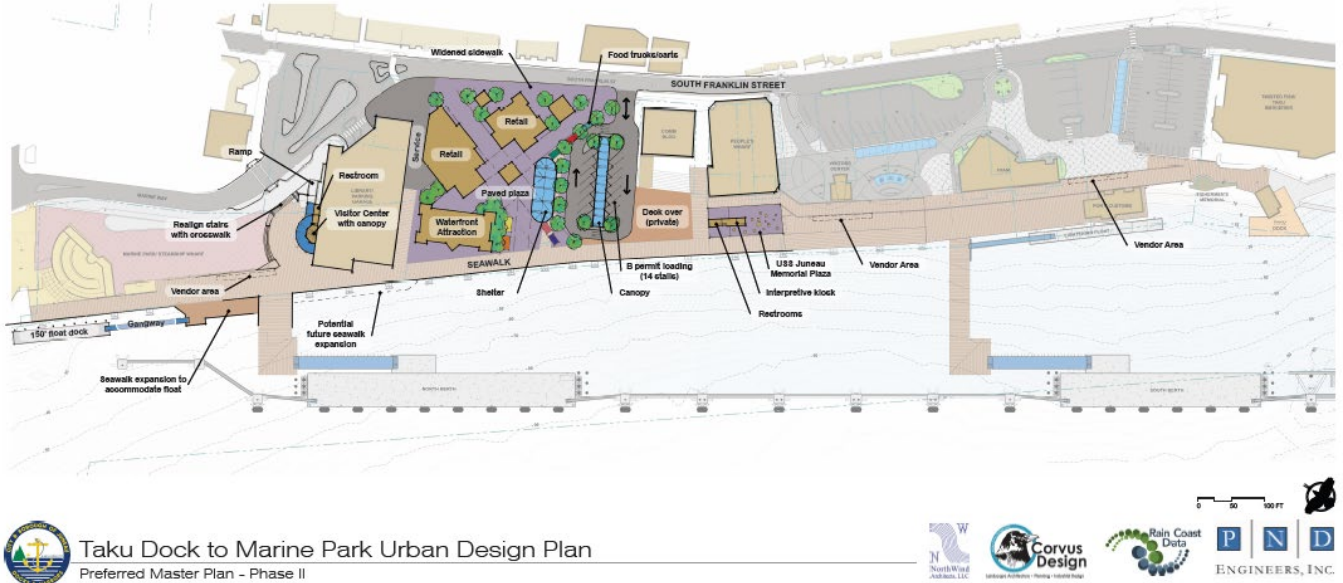
The Lone Sailor statue is the iconic symbol representing the United States Navy Memorial's mission to Honor, Recognize, and Celebrate the men and women of the Sea Services, past, present, and future; and Inform the public about their service. These meaningful statues provide a reminder to active duty, veterans, and civilians that they serve a grateful nation. The Navy Memorial's Statue City Program began in 1997 with the placement of a Lone Sailor statue at Recruit Training Command in Great Lakes, IL. There are 19 Lone Sailor Statues around the world, including the original on Navy Memorial Plaza in Washington, DC.

2. The Pioneers of Alaska have begun the process to acquire the Lone Sailor statue and ask for permission to locate along the downtown Seawalk. The details from the Navy Memorial are outlined below and identification of an appropriate location is paramount to the Pioneers of Alaska to move forward with their civic plans.

The process for placing a statue begins with a written request to the Navy Memorial identifying location, timeline, and fundraising plan for the project. Once the project is approved and the initial deposit of \$50,000 is raised, the statue is guaranteed upon site preparation and final payment. The Navy Memorial asks to raise at least \$350,000 for the statue, which includes the statue, crating, transportation, a description, a link for fundraising on the Navy Memorial website, a special bronze plaque provided explaining the Lone Sailor, and Navy Memorial leadership attendance at events including fundraisers and the dedication ceremony. The cost of the statue does not include land acquisition, site preparation, or other costs that the local committee may incur. The Lone Sailor statue is 7' 4" tall and, together with the sea bag, weighs 977 pounds. The Navy Memorial serves as an advisor to the project and, as an IRS-approved 501(c)(3) tax-exempt organization, manages tax-deductible donations to support the project.

Lone Sailor Statue Memorial

3. The most logical choice for the Lone Sailor statue would be in the area denoted in the [Marine Park to Taku Dock Urban Design Plan](#) as “waterfront attraction”.



Although there have been several ideas for this area, it seems reasonable that placement of the Lone Sailor statue could reside here until a higher and best use is determined. At that point, there may be other opportunities to relocate the statue to an improved USS JUNEAU Memorial site, the existing USS JUNEAU Memorial site, the potential uplands park at the Huna-Totem Dock or a location to complement the Coast Guard Dock improvements for the STORIS.

4. I recommend support of the Pioneers of Alaska (Igloo 6) efforts to place a Lone Sailor statue in the vicinity of the Waterfront Attraction identified in the Marine Park to Taku Dock Urban Design Plan.

#

Encl: (1) Photo of Lone Sailor Statue
(2) Documents provided by Pioneer of Alaska at the September 26th, 2024 Board Meeting

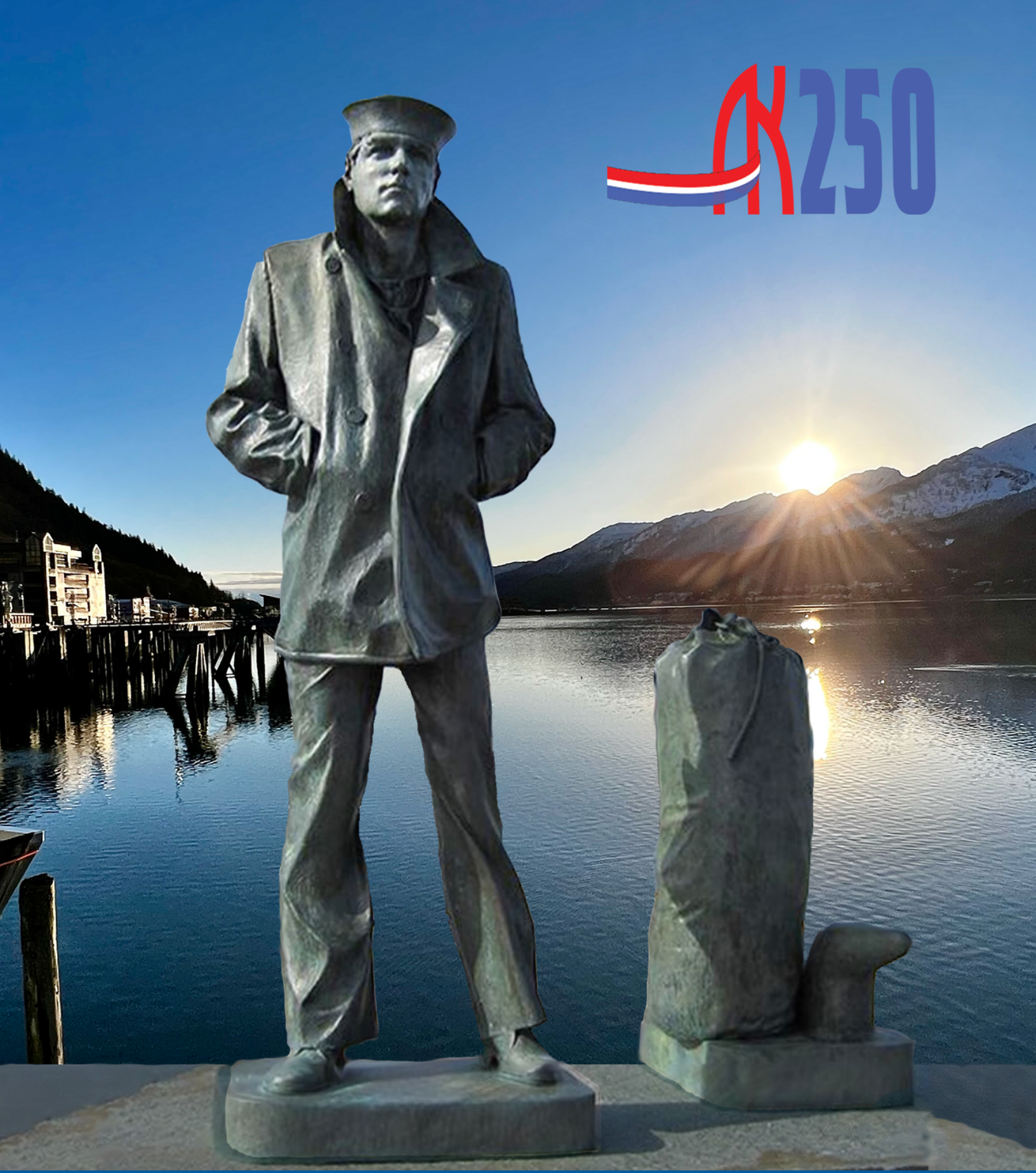
Copy: Pioneers of Alaska (Igloo 6)
Tourism Director



Lone Sailor Statue at Normandy Beach

(enclosure 1)

K250



JUNEQU LONE SAILOR

(enclosure 2)

**USS Juneau Memorial
Phase One: United States Navy Memorial
Lone Sailor Project**

Contact:

Fred Thorsteinson
907.321.8868
fredthorsteinson@gci.net

Leadership:

Pioneers of Alaska Igloo No. 6
Navy League Juneau Council
Veterans of Foreign Wars Taku Post 5559
American Legion Auke Bay AK Post 25

Stakeholders:

City and Borough of Juneau
Juneau Arts & Humanities Council
US Coast Guard Auxiliary Flotilla 1-1, District 17

Project Description: The mission of the Lone Sailor United States Navy Memorial is to honor, recognize and celebrate the men and women of the Sea Services, past, present and future; and to inform the public about their service.

Juneau's Lone Sailor bronze statue is Phase One of the planned upgrade and relocation of the USS JUNEAU Memorial to a more prominent location and larger display.

Estimated Cost: \$500,000

Initial Deposit: \$50,000
Site Preparation: \$140,000
Statue Acquisition/Delivery/Installation: \$300,000
Unveiling Celebration/Commemorative Mementos: \$10,000

Naming Rights: A 48" x 35" bronze plaque on the base of the statue is dedicated to donor naming. Additional opportunities would be available for significant financial support of the greater USS Juneau Memorial.

Timeline:

2024 Deposit on Statute
2025 City and Borough of Juneau Determines Site
Fundraising
Site Preparation
2026 Installation
October 13 Unveiling of Statue



Lone Sailor City Statue Timeline

PROJECT OVERVIEW

The Lone Sailor City Statue Program aligns with the United State Navy Memorial's mission *to Honor, Recognize and Celebrate the men and women of the Sea Service, Past, Present, and Future; and to inform the public about their service.* This document outlines the steps to successfully bring this statue project to fruition.

PHASE 1: PLANNING, SITE SELECTION AND REGULATORY APPROVALS

- Clarify the purpose and theme of the statue in consultation with stakeholders.
- Identify and finalize the statue's location.
- Conduct thorough historical research and collaborate with artists and designers to create a concept. (Statue Specifications available)
- Check local regulations and obtain necessary permits for statue installation.

PHASE 2: COMMUNITY ENGAGEMENT

- Engage with the community to gather input and support for the project.
- Host public forums and surveys to collect feedback, incorporating community feedback into the design.

PHASE 3: FUNDRAISING *

- Develop a comprehensive fundraising strategy and plan.
- Identify potential donors, sponsors, and partners.
- Execute fundraising activities, events, and donor outreach.

*U.S. Navy Memorial does not fundraise for city statues.

PHASE 4: FINANCIAL COMMITMENT AND AGREEMENT

- Review and sign agreements between the project lead and U.S. Navy Memorial.
- Initial deposit of \$50,000 to U.S. Navy Memorial.
- Final payment of \$300,000 must be received before statue is shipped.

PHASE 5: STATUE AND PLAQUES (4-6 WEEKS)

- Once the deposit has been made, the contract signed and delivery date has been confirmed, the foundry will schedule the patina process based on when the statue is to be shipped. The patina process can take four to six weeks.

PHASE 6: INSTALLATION PLANNING (TIME DEPENDENT ON RESPECTIVE LOCATION)

- Develop a detailed plan for the installation process.

PHASE 7: STATUE DELIVERY AND INSTALLATION

- Final payment of \$300,000 due before statue is shipped.
- Packaging and crating take one to two weeks.
- Statue is shipped from the foundry in New York.
- Delivery estimate depends on location and shipping method.

PHASE 8: DEDICATION CEREMONY

- Work with the U.S. Navy Memorial to plan the Dedication Ceremony

PHASE 9: POST-IMPLEMENTATION

- Maintenance and Preservation (Ongoing).
- Educational Outreach (Ongoing).

THE LONE SAILOR

PLACING A LONE SAILOR STATUE IN CITIES AROUND THE WORLD

www.NavyMemorial.org



The Lone Sailor has become the iconic symbol of the men and women who have served, are serving or will serve in the Navy. He's called the Lone Sailor, yet he is hardly ever alone. He is about 25 years old, a senior second class petty officer who is fast becoming a seagoing veteran. He has done it all -- fired weapons in war, provided humanitarian assistance in far-away lands, been attacked by the enemy and defended our freedom. He has made liberty calls in great cities and tiny villages where he was a tourist, ambassador, adventurer, friend, and missionary to those less fortunate and representative of our way of life. His shipmates remember him with pride and look up to him with respect.

The Lone Sailor statue was sculpted by Stanley Bleifeld and first dedicated at the U.S. Navy Memorial in Washington, DC on October 13, 1987, as a symbol of the U.S. Navy Memorial's mission to *Honor, Recognize and Celebrate the men and women of the Sea Services, past, present and future; and to Inform the public about their service.*

The original Lone Sailor statue stands watch in Washington, DC.

By placing additional Lone Sailor statues around the world, we honor, recognize and celebrate these men and women wherever they serve. In addition to the original statue in Washington, DC, 17 Lone Sailor statues have been placed around the world.



The Lone Sailor statue at the Pearl Harbor Visitor Center in Hawaii, overlooking the USS Arizona.

LOCATIONS:

- Adelup Point, Guam
- Baton Rouge, LA
- Bremerton, WA
- Burlington, VT
- Cleveland, OH
- Dallas, TX
- Fort Lauderdale, FL
- Great Lakes, IL
- Long Beach, CA
- Norfolk, VA
- Normandy, France
- North Charleston, SC
- Orlando, FL
- Pearl Harbor, HI
- San Francisco, CA
- Washington, DC
- Waterloo, IA
- West Haven, CT

The process for placing a statue begins with a written request to the Navy Memorial identifying location, timeline, and fundraising plan for the project. Once the project is approved and the initial deposit of \$50,000 is raised, the statue is guaranteed upon site preparation and final payment. The Navy Memorial asks to raise at least \$350,000 for the statue, which includes the statue, crating, transportation, a description, a link for fundraising on the Navy Memorial website, a special bronze plaque provided explaining the Lone Sailor, and Navy Memorial leadership attendance at events including fundraisers and the dedication ceremony. The cost of the statue does not include land acquisition, site preparation, or other costs that the local committee may incur. The Lone Sailor statue is 7' 4" tall and, together with the sea bag, weighs 977 pounds. The Navy Memorial serves as an advisor to the project and, as an IRS-approved 501(c)(3) tax-exempt organization, manages tax-deductible donations to support the project.



For more information regarding the U.S. Navy Memorial's Lone Sailor or the Lone Sailor Statue City Program, please contact Kendra Greenwaters at kgreenwaters@navymemorial.org or 202-380-0726.



The Lone Sailor Statue Specifications

LONE SAILOR STATUE WEIGHT AND DIMENSIONS

Cast in bronze, the dimensions of the “Lone Sailor Statue” which comes in two pieces are:

Lone Sailor:

88” high x 36” wide x 26” deep

Weight: 633 lbs.

Seabag and Cleat:

47” high x 44” wide x 24” deep

Weight: 363 lbs.

LONE SAILOR STATUE INSTALLATION:

Eight 10-inch threaded rods will be provided with the statue. The rods are $\frac{3}{4}$ ”-10, 316 stainless-steel. There are four mountings on the underside of the Lone Sailor and four on the underside of the Seabag and Cleat. Recommended installation:

1. Use the templates provided with the sculpture to mark the mounting hole locations in its desired spot.
2. Drill the marked locations to their desired depth. UAP recommends drilling 8 inches embedment into concrete as well as oversizing the holes by $\frac{1}{8}$ inch. ($\frac{7}{8}$ ” drilled hole for $\frac{3}{4}$ ” rods)
3. Thread the rods onto each mounting, leaving approximately 8” of rod extending below.
4. Move the sculptures into place and dry fit to their corresponding mounting holes.
5. If this will be a permanent installation, after dry fitting the sculptures to ensure their fit, fill hole $\frac{1}{4}$ way with industrial epoxy. We recommend the product Hilti Hit-HY 200 or equivalent. (See file HIT-HY-200-200-A-200-R-Product-Data-2016680 for installation specifications)

BRONZE PLAQUE INFORMATION: (Optional)

The Navy Memorial will provide up to three bronze plaques along with the statue. The following are notional sizes and topics:

Plaque #1 Who is the Lone Sailor: 42” H X 32” W. This plaque explains who the Lone Sailor and is and what he represents. The first draft for this plaque is below and can be edited to suit the situation and location of the Sailor.

Plaque #2 Lone Sailor at XXX Location Description: 42” H X 32” W This plaque explains “why” the statue is in that location and provides a connection between the Lone Sailor and the area. The group leading the statue project provides the first draft.

Plaque #3 Donor Plaque: 48” H X 35” W This plaque acknowledges who is responsible for placing the statue in that area (leaders and donors and contributors.)

Plaque Base Weight: The base is dependent upon what materials are used by the location and is the purview of the site designer.

BRONZE PLAQUE WORDING (First draft for plaque)

The Lone Sailor represents the men and women who have served, are serving, or will serve in the United States Navy. He's called the Lone Sailor, yet he is hardly ever alone. He is about 25 years old, a senior second-class petty officer who is fast becoming a seagoing veteran. He has done it all -- fired weapons in war, provided humanitarian assistance in far-away lands, been attacked by the enemy, and defended our freedom. He has made liberty calls in great cities and tiny villages where he was a tourist, ambassador, adventurer, friend, and missionary to those less fortunate. His shipmates remember him with pride and look up to him with respect.

The Lone Sailor is an iconic symbol of the Navy Memorial's mission to Honor, Recognize, and Celebrate the men and women of the Sea Services, past, present, and future; and to Inform the public about their service.

NOTIONAL DESIGN FOR STATUE BASE (for info only)

