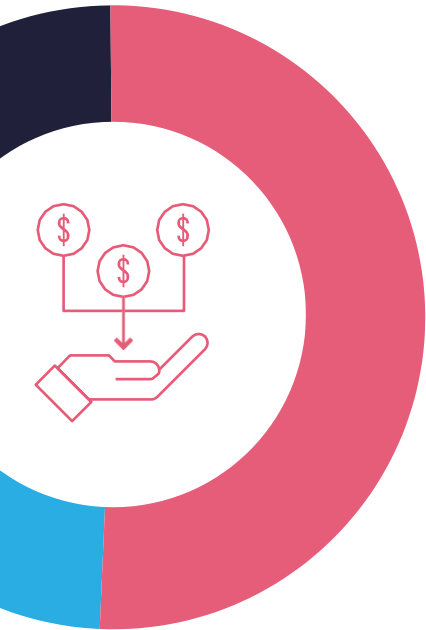


JUNEAU FACT SHEET



51%

INCOME SPENT ON RENT

On average, Juneau residents spend **51%** of their monthly income on rent.

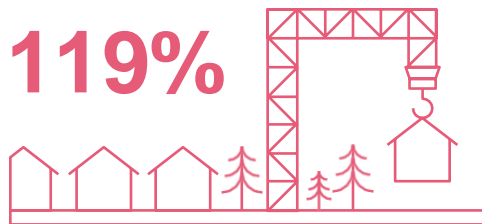


\$1,413

AVERAGE RENT FOR A 2-BEDROOM APARTMENT
ANCHORAGE: \$1,220/MONTH

\$2,783

AVERAGE MONTHLY PAY FOR A RESIDENT
ANCHORAGE: \$4,347/MONTH



119%

COST OF CONSTRUCTION

In Juneau, construction costs are **119%** more expensive than Anchorage.



4%

OVERCROWDING IN HOMES

4% of households in Juneau don't have enough space for the whole family.

