



NATIONAL WEATHER SERVICE

Building a Weather-Ready Nation

Hazardous Weather Preparedness

Fall & Winter

Nicole Ferrin - Warning Coordination Meteorologist

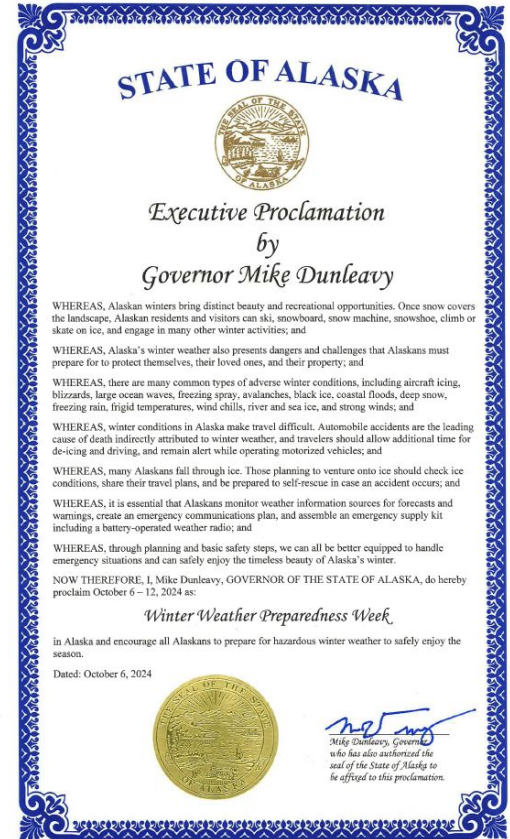
NWS Juneau

LEPC - Wednesday October 9, 2024

Winter Weather Preparedness Week

Oct. 6-12, 2024

- Daily posts on winter safety & preparedness information
 - *Force multiplier*
 - Share & add your own safety messaging
- [weather.gov/safety/winter](https://www.weather.gov/safety/winter)



NATIONAL WEATHER SERVICE



Winter Weather Safety

Be Weather-Ready



How you can prepare for winter weather:

- Winterize your car, put on snow tires, and put a winter survival kit in it.
- Prepare your home by adding insulation and trimming branches.
- Restock your emergency kit with extra batteries, food, etc.
- Make sure your generator is in working order and review the safety manual. **NEVER** run a generator in an enclosed space.



weather.gov/winter-ready.gov/kit



Building a Weather-Ready Nation

www.weather.gov/safety

Winter Weather Preparedness Week

Oct. 6-12, 2024

WINTERIZE Your Home



Your home isn't the only one that can be winterized.
Your neighbors and those most vulnerable might need your help too!

weather.gov



Prepare Your Home for Winter Weather!

Winter storms can knock out power and keep you from traveling for days



Keep enough non-perishable food, water and medications for at least 3 days



Ensure you have warm clothing and blankets



Make sure you have an updated first aid kit



Charge your phone in advance and check for Wireless Emergency Alerts



weather.gov



NATIONAL WEATHER SERVICE

Winter Weather Preparedness Week

Oct. 6-12, 2024

Pre-Storm:

- Clear storm drains
- Gather supplies
 - Shovel
 - Snowblower
 - Ice melt, sand, gravel
 - Food
- Park off-street

During/Post-Storm:

- Keep up with shoveling
 - Prior to change over to rain!
 - *Hydrate, take breaks*
- Clear off vulnerable structures
 - Sheds
 - Decks
 - Vessels
- Shovel around mail boxes & hydrants



Rename of Extreme Cold Products

Previous

Extreme Cold Watch

Wind Chill Watch

Extreme Cold Warning

Wind Chill Warning

Wind Chill Advisory



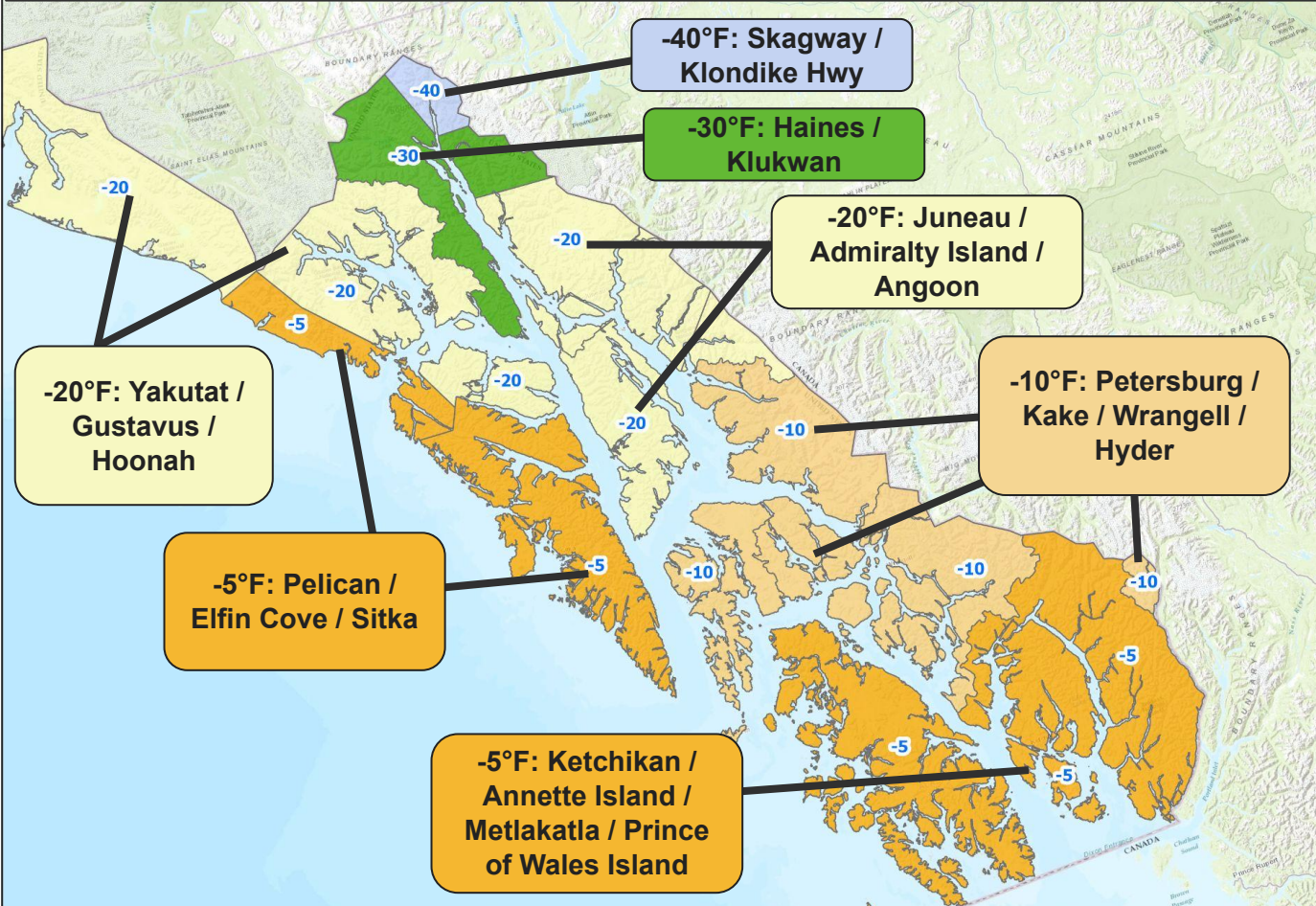
Now

Extreme Cold Watch

Extreme Cold Warning

Cold Weather Advisory

New Extreme Cold Warning Criteria 2024



~ Cold is cold whether there is wind or no wind

~ Uses “Apparent Temperature” / “Feels Like”

~ Warning issued when: dangerously cold air temperatures or wind chill values are expected or occurring

~ Cold weather temperature criteria based on areal climatology

This replaces previous Wind Chill Warning



Landslides - Natural Warning Signs

Structural Signs:

- Structures like decks or patios moving relative to a main
- Cracking floors or foundations
- Broken water lines or other underground utilities
- Leaning telephone poles, trees, walls, or fences
- Soil moving away from foundations

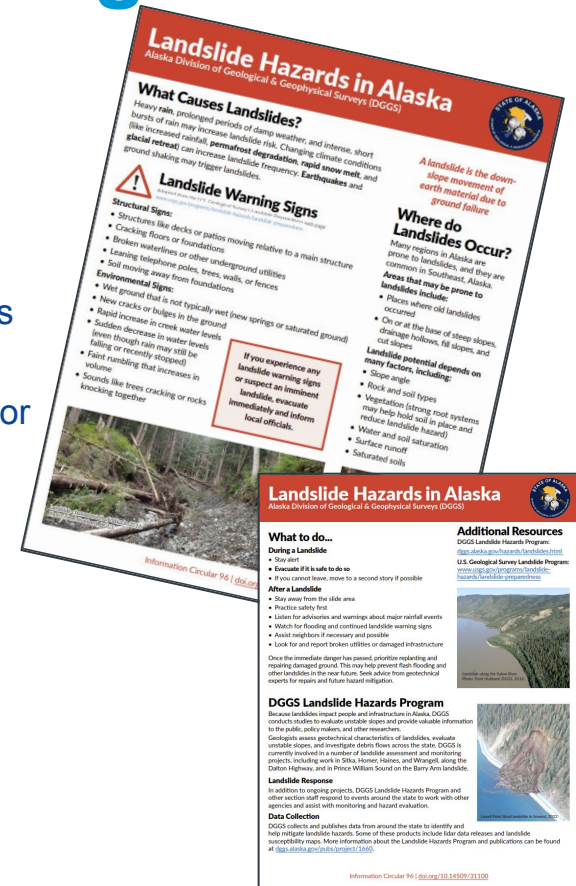
Environmental Signs:

- Wet ground that is not typically wet (new springs or saturated ground)
- New cracks or bulges in the ground
- Rapid increase in creek water levels
- Sudden decrease in water levels (even though rain may still be falling or recently stopped)
- Faint rumbling that increases in volume
- Sounds like trees cracking or rocks knocking together

Reference:

<https://dggs.alaska.gov/hazards/landslides.html>

<https://dggs.alaska.gov/webpubs/dggs/ic/text/ic096.pdf>



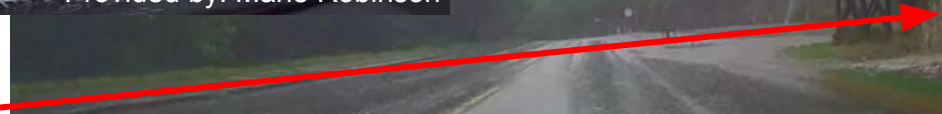
Landslides - Natural Warning Signs



“Clear” Water



“Dirty/Brown” Water



Observations of the Ketchikan slide area, hours before it occurred



NATIONAL WEATHER SERVICE

Flooding Preparedness & Safety

Are you sure you know what's under the water?




Even when the water recedes,
the ground may be unstable



***YOU DON'T KNOW HOW DEEP
THE WATER IS.***

Turn Around, Don't Drown.®

weather.gov 



NATIONAL WEATHER SERVICE

Flooding Preparedness & Safety

[weather.gov/safety/flood](https://www.weather.gov/safety/flood)

- Standing water hides many dangers
 - Toxins & chemicals
 - Live wires
 - Debris or sharp objects under the water
 - Road surface may have completely collapsed beneath the water
- Most cars can be swept away in 12-18 inches of swiftly moving water (18-24" for large SUVs & trucks)
- 6 inches of fast-moving water can knock over and carry away an adult
- Heed road closures and evacuations
- Monitor NOAA Weather Radio for updates



NATIONAL WEATHER SERVICE



Mendenhall River & Suicide Basin

Status Update

weather.gov/Juneau/suicidebasin

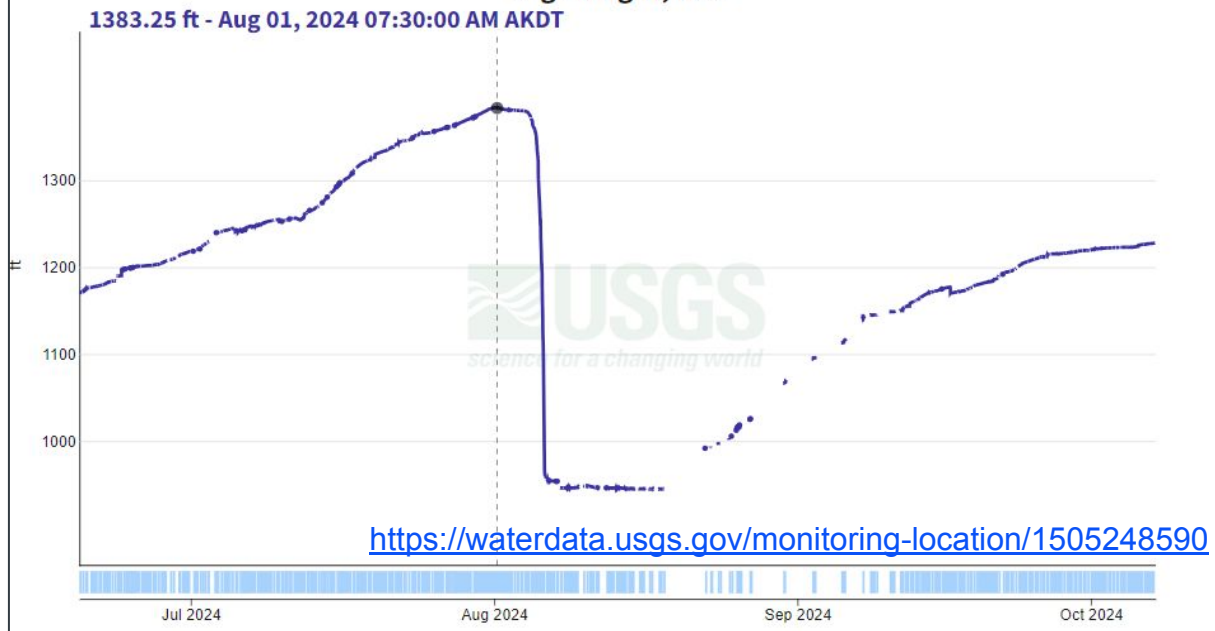
- Basin is almost 2/3rd full
 - Estimated to be similar to Oct. 2022
- Slower fill rate due to lowered snow levels
- No known outburst floods past October

Glacial Lake 2.5 MI N of Nugget C NR Auke Bay

AK - 1505248590

June 19, 2024 - October 7, 2024

Gage height, feet

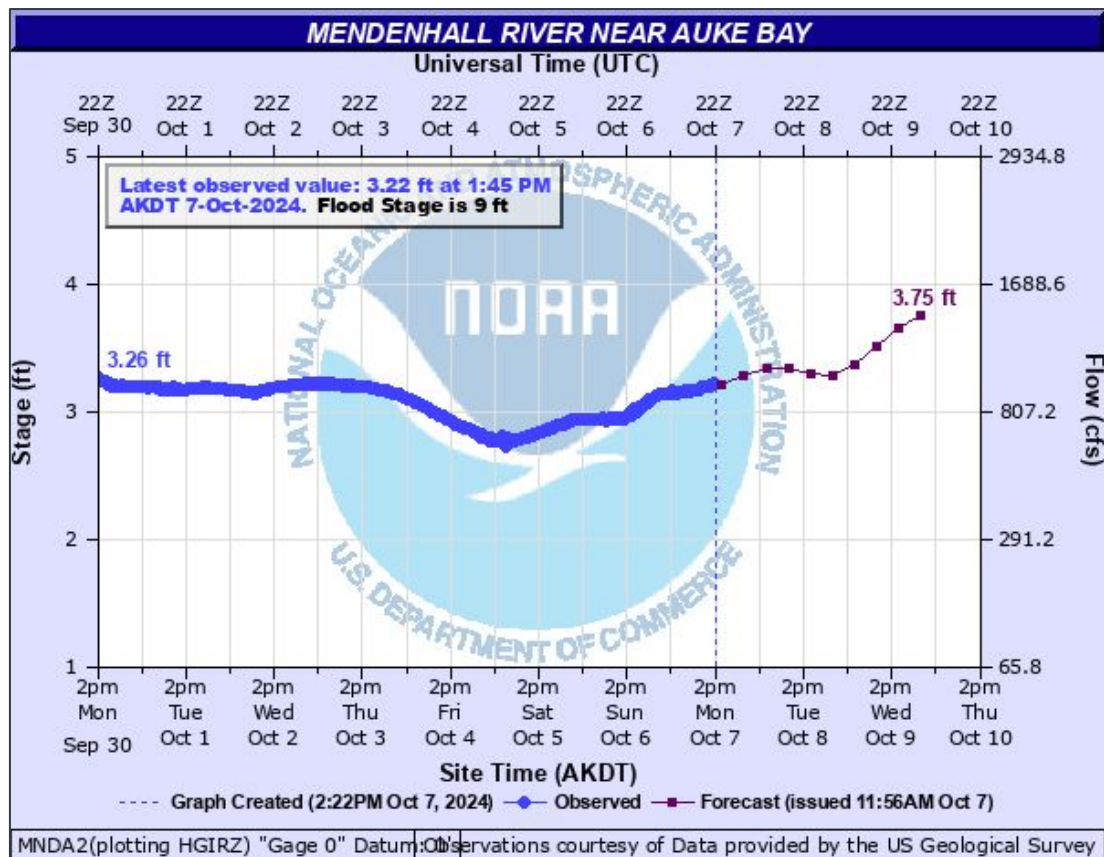


Mendenhall River & Suicide Basin

Status Update

weather.gov/Juneau/suicidebasin

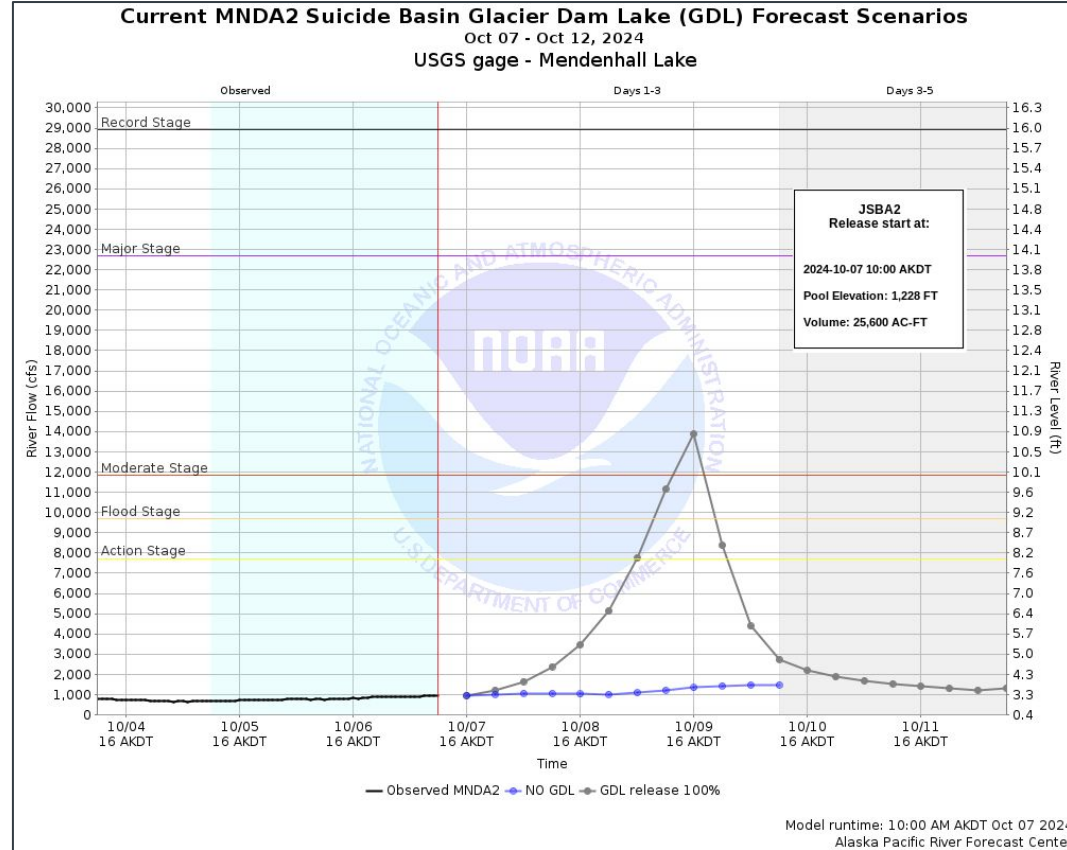
- Lake/river levels are down to 3-4ft
- Less runoff due to lowered snow levels



Mendenhall River & Suicide Basin

Status Update

Based on current basin volume and lake levels...
If a release began today:
Crest height would reach approximately 11 feet



Other hazards?



Air Quality



Beach Hazards



Cold



Drought Safety



Floods



Fog



Heat



Hurricanes



Lightning



Rip Currents



Safe Boating



Space Weather



Sun (Ultraviolet Radiation)



Thunderstorms



Tornado



Tsunamis



Wildfire



Wind



Winter Weather

[weather.gov/safety/](https://www.weather.gov/safety/)

