

ORIGINAL

# U. S. SURVEY No. 3844, ALASKA

EMBRACING  
JUNEAU ISLAND  
SITUATED  
IN GASTINEAU CHANNEL

GEOGRAPHIC POSITION  
LATITUDE 58°16'36" N. LONGITUDE 134°23'06" W.  
AT U.S.L.M. NO. 1

AREA: 3.18 ACRES

EXECUTED BY  
CLIFFORD L. MCKAY, CADASTRAL SURVEYOR  
MARCH 27 - APRIL 10, 1961

UNDER SPECIAL INSTRUCTIONS  
DATED DECEMBER 8, 1960  
AND  
APPROVED FEBRUARY 27, 1961

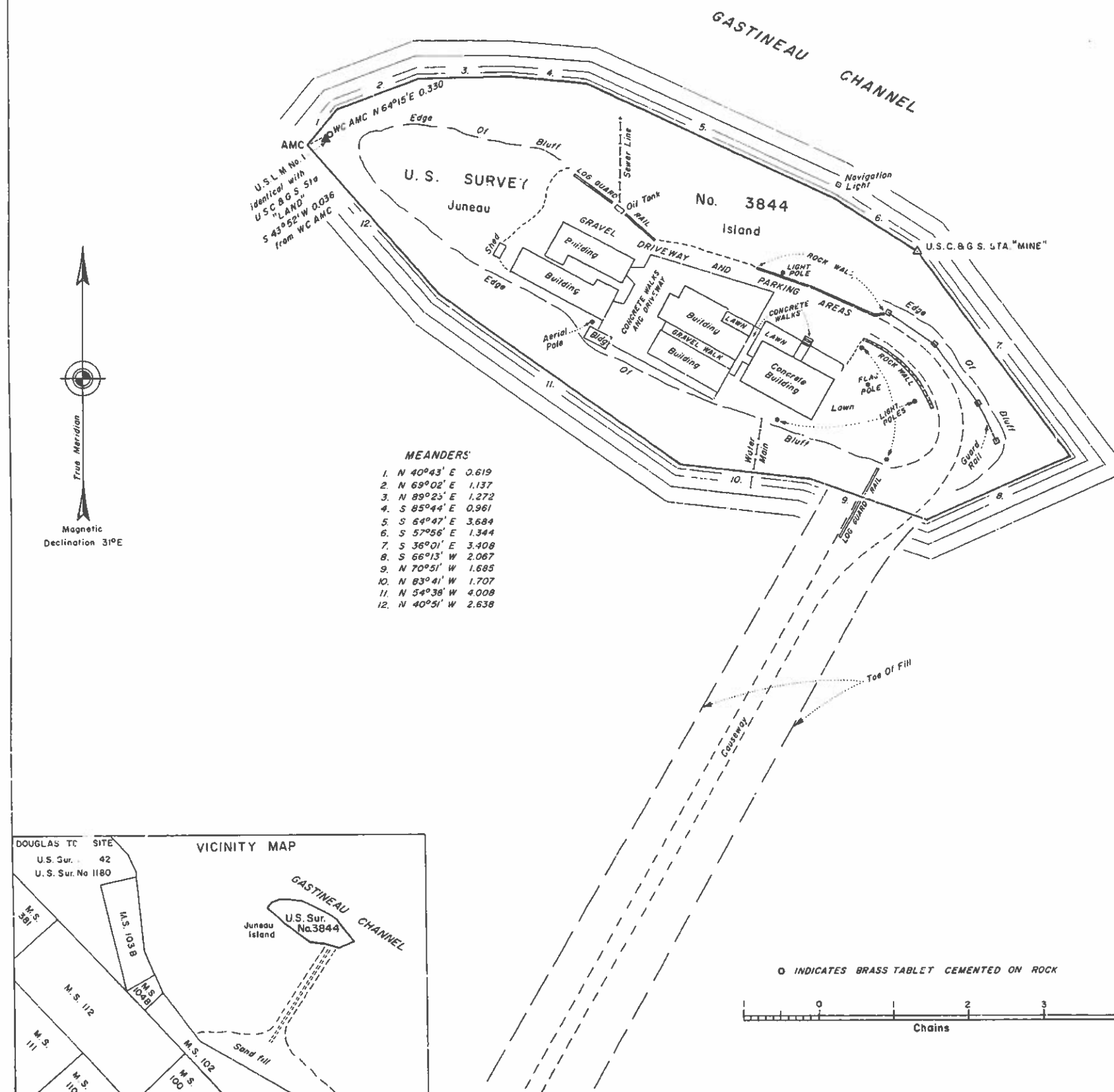
UNITED STATES DEPARTMENT OF THE INTERIOR  
BUREAU OF LAND MANAGEMENT  
Washington, D.C. October 12, 1962

This plat is strictly conformable to the approved field notes, and the survey, having been correctly executed in accordance with the requirements of law and the regulations of this Bureau, is hereby accepted.

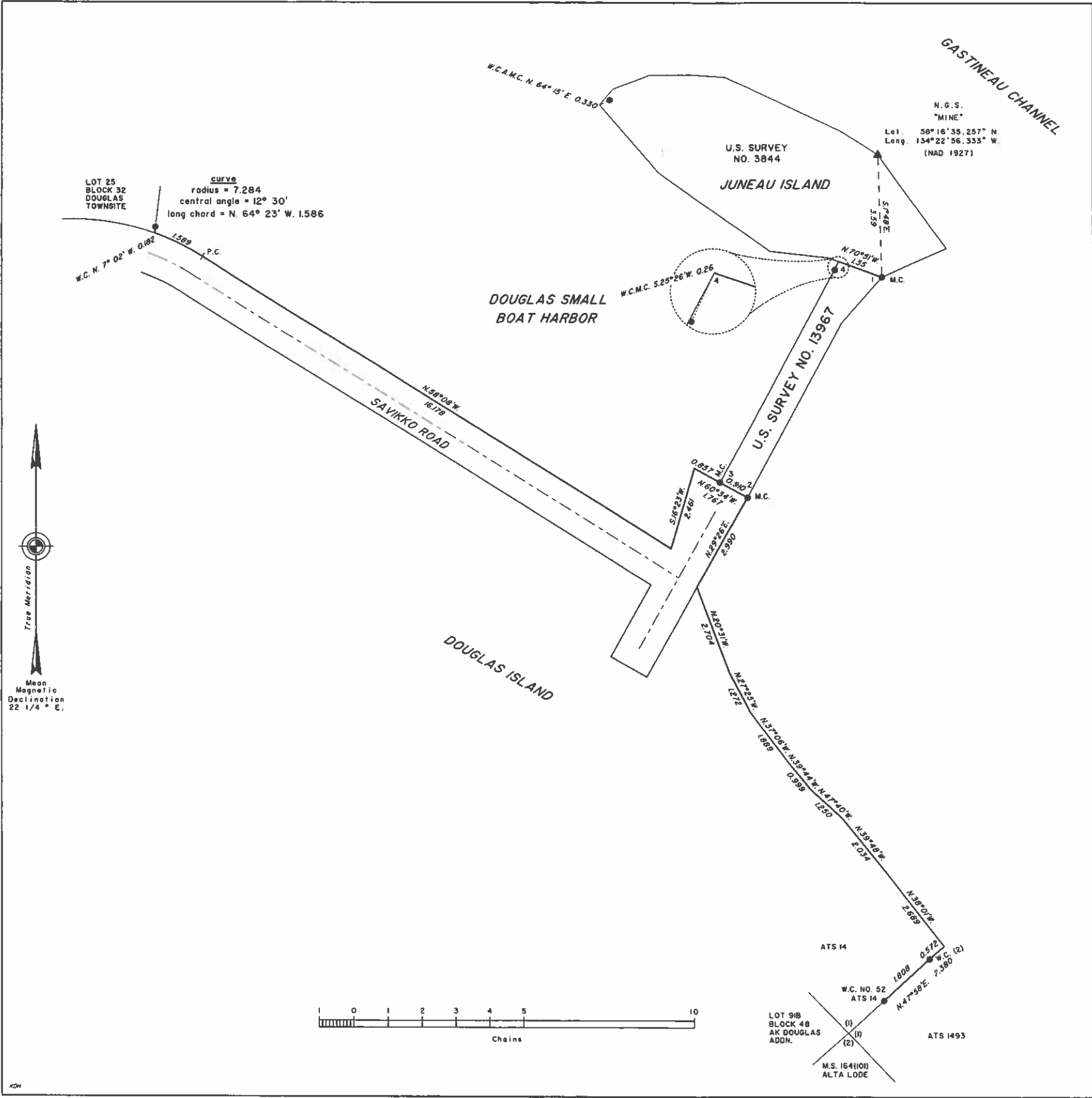
For the Director

*E. L. Huntington*

Chief, Division of Engineering



J. Elden



U.S. SURVEY  
No. 13967, ALASKA

AND

THE DEPENDENT RESURVEY OF A PORTION OF  
U.S. SURVEY NO. 3844

AND

THE RETRACEMENT OF A PORTION  
OF THE ROBERT SAVIKKO PARKS AND RECREATION  
AREA BOUNDARY

SITUATED  
AT DOUGLAS, ALASKA, ON GASTINEAU CHANNEL  
WITHIN TOWNSHIP 41 SOUTH, RANGE 67 EAST,  
COPPER RIVER MERIDIAN, ALASKA

GEOGRAPHIC POSITION OF CORNER NO. 1,  
A MEANDER CORNER

IS:

LATITUDE: 58° 16' 32.92" NORTH NAD27  
LONGITUDE: 134° 22' 56.19" WEST

AREA: 0.72 ACRES

SURVEYED BY  
KURT D. HUHTA, CADASTRAL SURVEYOR  
AUGUST 15 THROUGH AUGUST 18, 2008  
UNDER SPECIAL INSTRUCTIONS  
DATED JUNE 27, 2008  
APPROVED AUGUST 1, 2008

UNITED STATES DEPARTMENT OF THE INTERIOR  
BUREAU OF LAND MANAGEMENT  
Anchorage, Alaska

This plat is strictly conformable to the approved  
field notes, and the survey, having been correctly  
executed in accordance with the requirements of  
law and the regulations of this Bureau, is hereby  
accepted.

For the Director  
*[Signature]*  
Date JAN. 11, 2013

Chief Cadastral Surveyor for Alaska

DATE August 11, 2022

Sheet 1 of 2 Sheets

**U.S. SURVEY  
No. 13967, ALASKA**

COMPRISING  
THE DEPENDENT RESURVEY  
OF A PORTION OF  
ALASKA TIDELANDS SURVEY NO. 14  
THE RETRACEMENT OF  
A PORTION OF  
U.S. SURVEY NO. 13967  
AND  
THE SURVEY OF LOT 2

SITUATED  
AT DOUGLAS, ALASKA, ON GASTINEAU CHANNEL  
WITHIN TOWNSHIP 41 SOUTH, RANGE 67 EAST,  
COPPER RIVER MERIDIAN, ALASKA

GEOGRAPHIC POSITION OF CORNER NO. 8,  
LOT 2,  
IDENTICAL WITH  
CORNER NO. 3, LOT 1, U.S. SURVEY NO. 13967  
BOTH MEANDER CORNERS

IS:  
LATITUDE: 58°16'27.797" NORTH NAD83  
LONGITUDE: 134°23'08.389" WEST

AREA: 1.55 ACRES

ALL SURVEYED LINES ARE MEAN BEARINGS

SURVEYED BY  
CHRISTOPHER E. WILLIAMS, CADASTRAL SURVEYOR

SEPTEMBER 16, 2019 THROUGH  
FEBRUARY 12, 2022

UNDER SUPPLEMENTAL SPECIAL  
INSTRUCTIONS No. 1

DATED SEPTEMBER 5, 2019

APPROVED SEPTEMBER 6, 2019

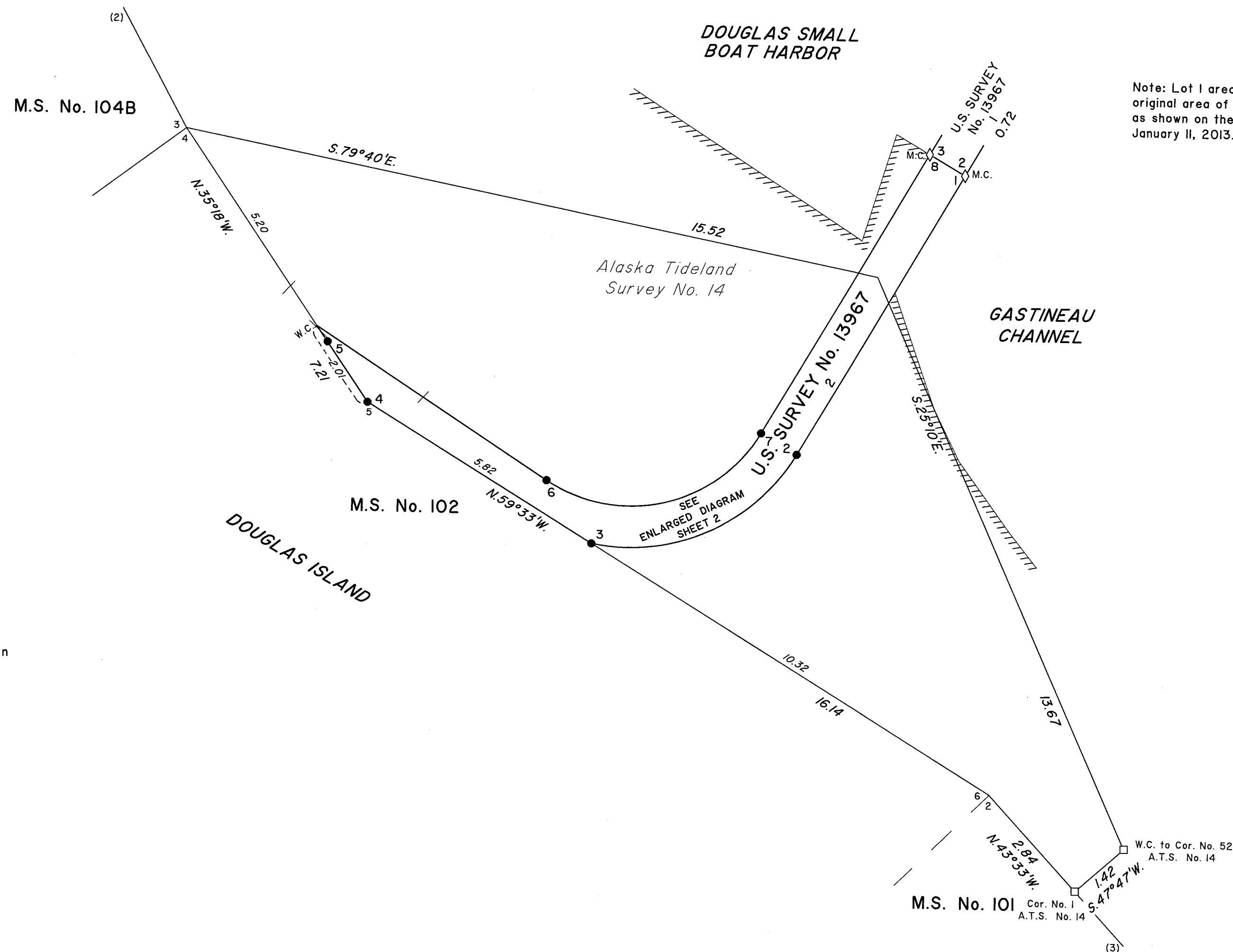
UNITED STATES DEPARTMENT OF THE INTERIOR  
BUREAU OF LAND MANAGEMENT  
Anchorage, Alaska

The survey represented by this plat, having been  
correctly executed in accordance with the require-  
ments of law and the regulations of this Bureau,  
is hereby accepted.

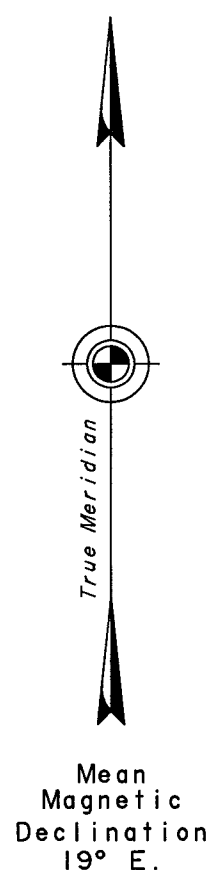
For the Director

Thomas B. O'Boyle MARCH 31, 2022  
Date

Chief Cadastral Surveyor for Alaska



Note: Lot 1 area is derived from the  
original area of U.S. Survey No. 13967,  
as shown on the official plat accepted  
January 11, 2013.



**LEGEND**

- ◊ = Original Corner
- = Proportioned Point Remonumented or New Corner Monumented
- = Local Corner

