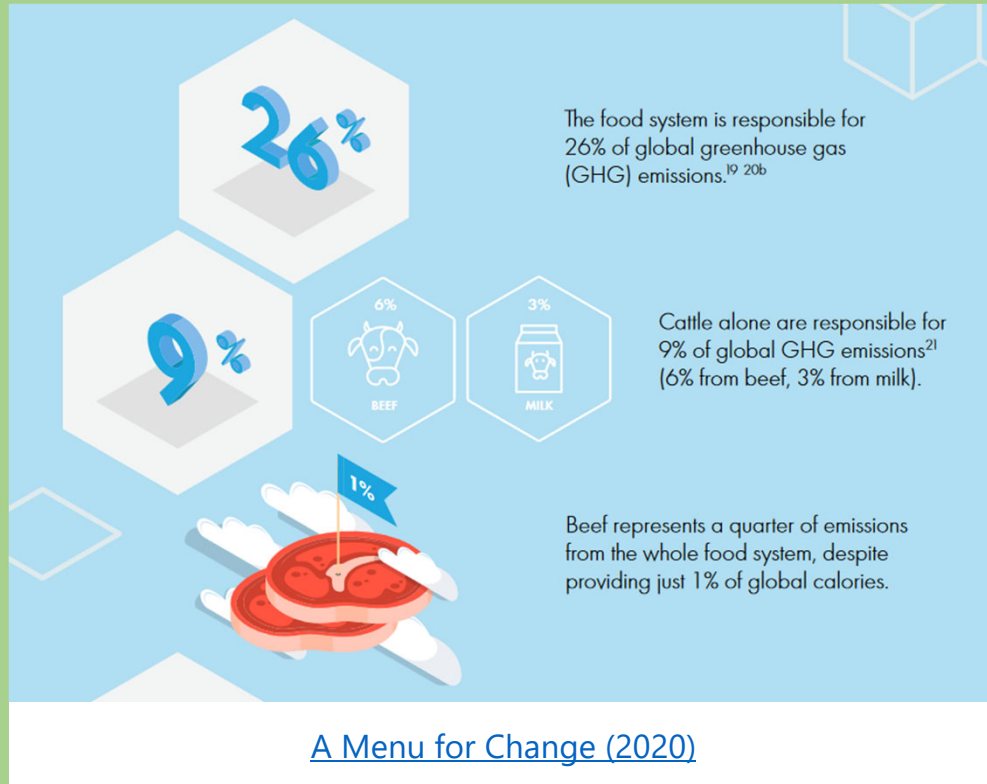


The environmental impact of food

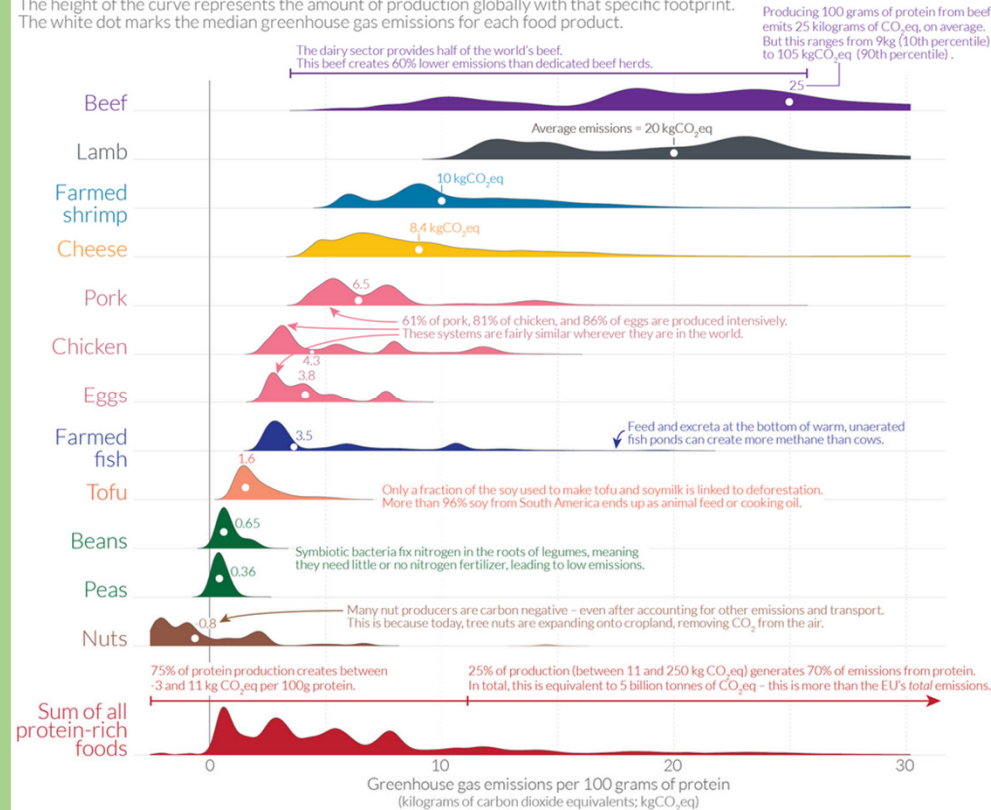


**And that's just GHG emissions...
there's also water use, land use, and more**

How does the carbon footprint of protein-rich foods compare?

Greenhouse gas emissions from protein-rich foods are shown per 100 grams of protein across a global sample of 38,700 commercially viable farms in 119 countries. The height of the curve represents the amount of production globally with that specific footprint. The white dot marks the median greenhouse gas emissions for each food product.

Our World
in Data



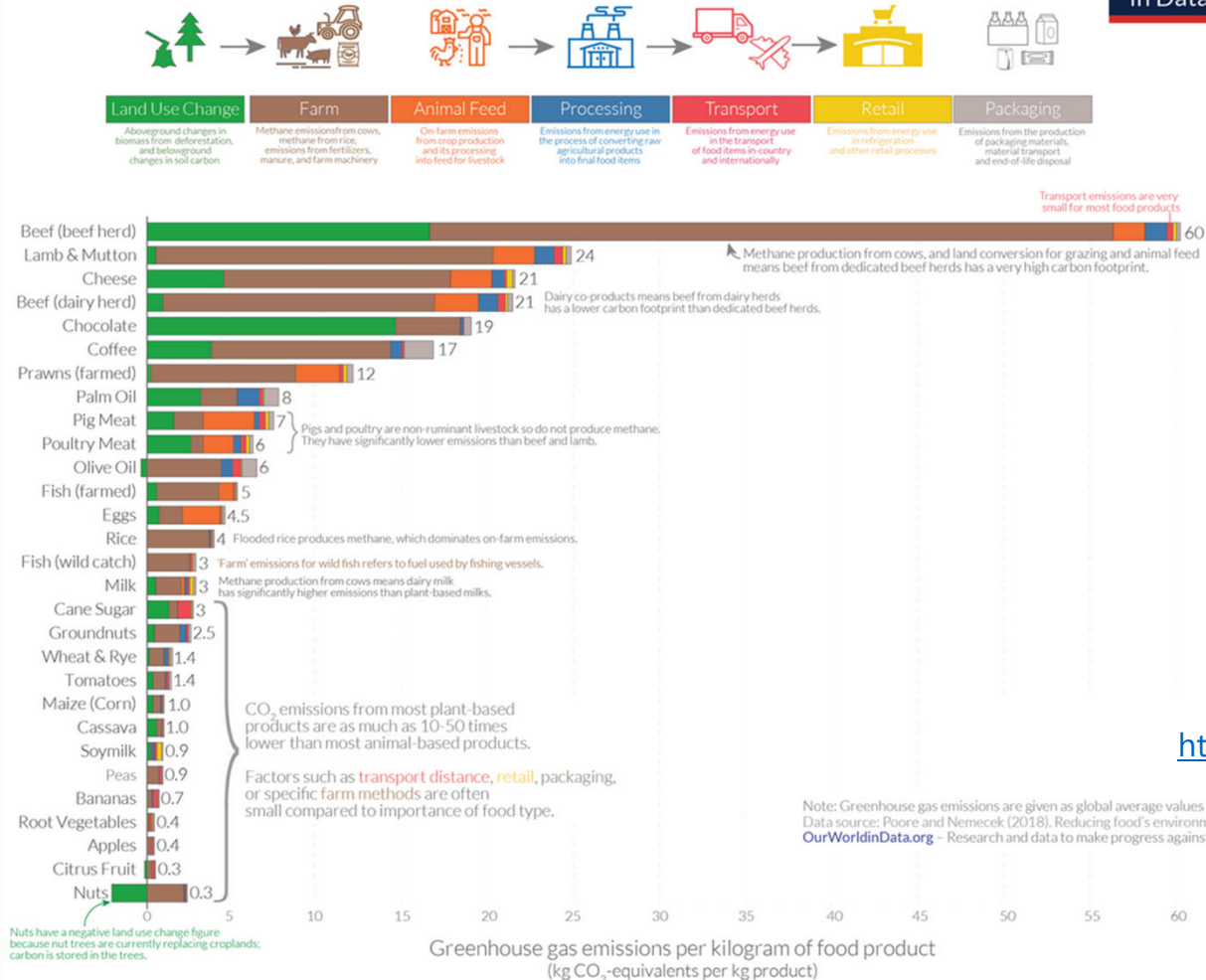
Note: Data refers to the greenhouse gas emissions of food products across a global sample of 38,700 commercially viable farms in 119 countries. Emissions are measured across the full supply-chain, from land use change through to the retailer and includes on-farm, processing, transport, packaging and retail emissions. Data source: Joseph Poore and Thomas Nemecek (2018). Reducing food's environmental impacts through producers and consumers. Science. OurWorldinData.org – Research and data to make progress against the world's largest problems. Licensed under CC-BY by the authors Joseph Poore & Hannah Ritchie.

<https://ourworldindata.org/less-meat-or-sustainable-meat>

The environmental impact of food – and how to reduce it

Food: greenhouse gas emissions across the supply chain

Our World
in Data



The impact of transport is tiny compared to the impact of farmed animal products

<https://ourworldindata.org/food-choice-vs-eating-local>

City governments are taking action



CITIES KICKSTARTING A PLANT-FORWARD FUTURE

www.defaultveg.org

2010s

Cities nationwide begin passing Meatless Monday resolutions, including in San Jose, CA; Oakland, CA; Cleveland, OH; Minneapolis, MN; Boone, NC; and Philadelphia, PA

Multnomah County, OR - 2010

Calls on residents to eat more sustainably through reduced meat consumption

2015

Milan Urban Food Policy Pact encouraging meat reduction is signed by 165 signatories worldwide

2008 - New York, NY

Nutrition guidelines encourage agencies to prioritize environmentally-friendly and healthy plant-based foods

2010 - Eugene, OR

"Buy climate-friendly first" food purchasing goal in the Climate Action Plan

2013 - Santa Monica, CA

Climate Action Plan calls for a 15% reduction in meat and dairy purchases

Carrboro, NC - 2017

Climate Action Plan establishes goal of 50% animal product reduction by 2025

Los Angeles, CA - 2019

Joins 13 global cities in signing the C40 Good Food Cities Declaration to shift procurement toward the low-meat Planetary Health Diet

Prince George's County, MD - 2020

Requires healthy plant-based kids' meal options at restaurants

2015 - Multnomah County and Portland, OR

Climate Action Plan commits to increasing institutional purchases of healthy, low-carbon and minimally processed food

2018 - Berkeley, CA

Establishes Green Mondays

2019 - New York, NY

Executive Order to reduce red meat by 50% and phase out processed meat by 2040

2020 - San Francisco, CA

Commits to reducing animal products in jails by 50% by 2024 and in hospitals by 15% by 2023

Berkeley, CA - 2021

Passes Vision 2025 (50% plant-based shift by 2025)

2021 - Denver, CO

Mayor's Sustainability Advisory Council adopts DefaultVeg

New York, NY - 2021

Adopts Meatless Mondays into its 10-year food policy plan

2021 - Washington, DC

Enacts the Green Food Purchasing Act to reduce food-related GHG emissions by 25%

San Diego, CA - 2022

Draft Climate Action Plan recommends 20% reduction in greenhouse gases from meat and dairy

2023 Adopted Resolutions



A Plant-Based Approach has Promise to Address Chronic Disease, Environmental, and Fiscal Burdens Facing Cities Across the Nation

Over 1,400 US mayors have supported a resolution to promote plant-based initiatives to help improve public health and reduce food-based emissions.

**Let's explore what
CBJ could do**