

AARP Alaska

# Age-Friendly Designation for Juneau

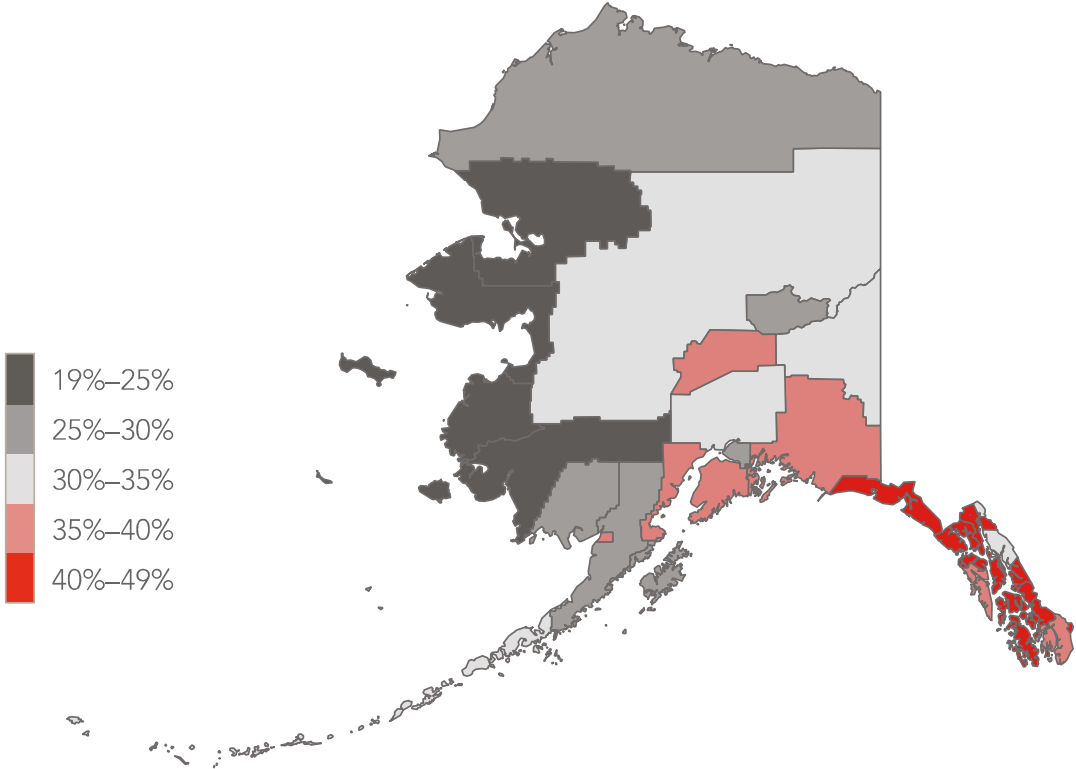


**AARP**<sup>®</sup>  
Alaska

# Demographic Information on Alaskans 50+

Where do people age 50-plus live?

(%) share by county in 2018



There are 11,494 seniors 50+ living in Juneau and the number is growing.



# What Do Older Adults Want?



77%

Strongly agree with the statement, "I would like to remain in my community as long as possible."

76%

Strongly agree with the statement, "I would like to remain in my current home as long as possible."

8 of 10  
ADULTS

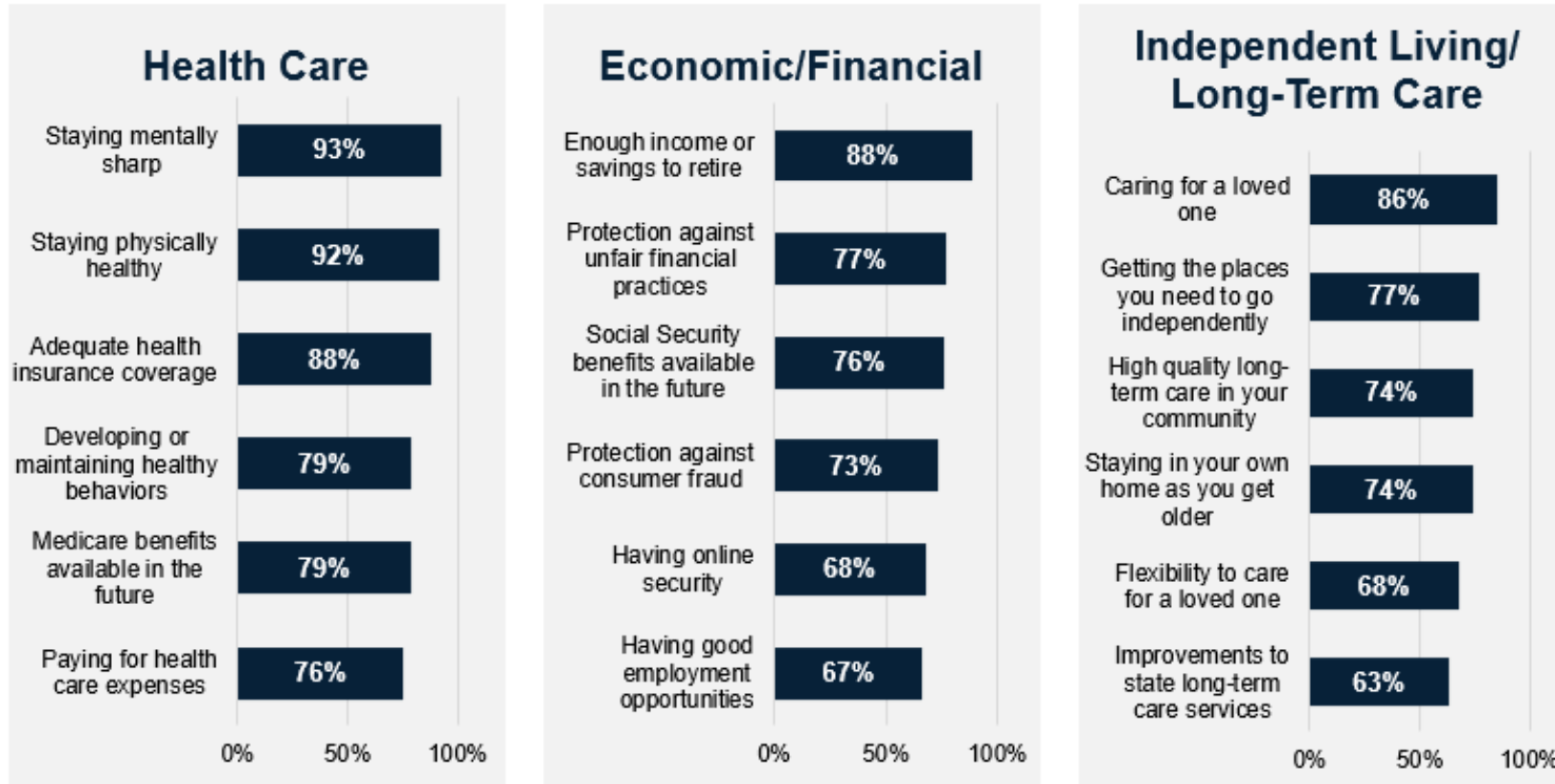
age 50 and older want to stay where they live





# AARP Alaska Survey of Seniors

## Issues of Importance to Alaska's Adults Age 45+



*"For the following list of issues, please indicate how important each is to you personally."  
% "extremely important" or "very important"*

# Alaska Longevity Economy Outlook

50-plus households accounted for 52 cents of every dollar spent in Alaska in 2018—this will grow to 58 cents (58%) by 2050



50-plus share of every dollar spent, for select categories

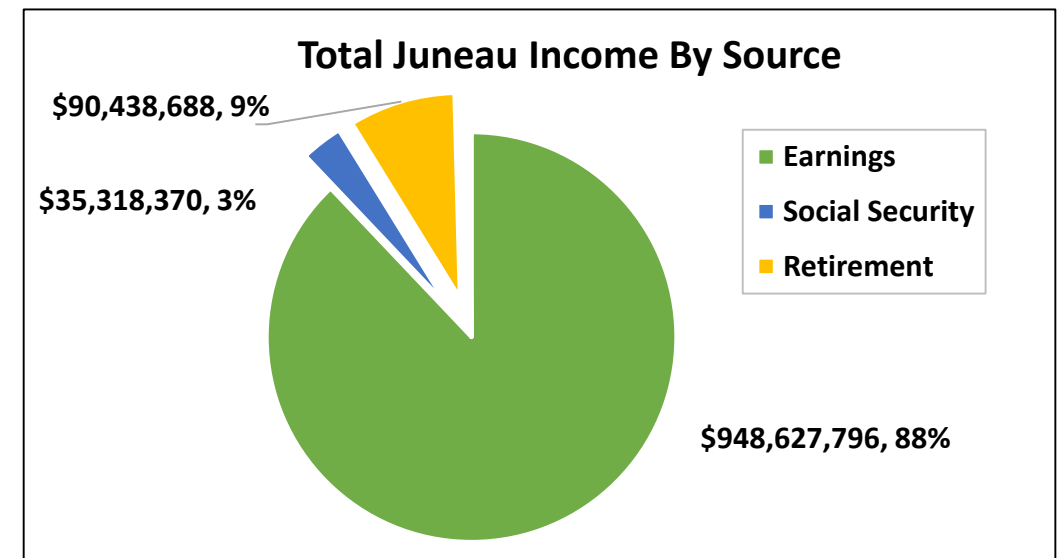
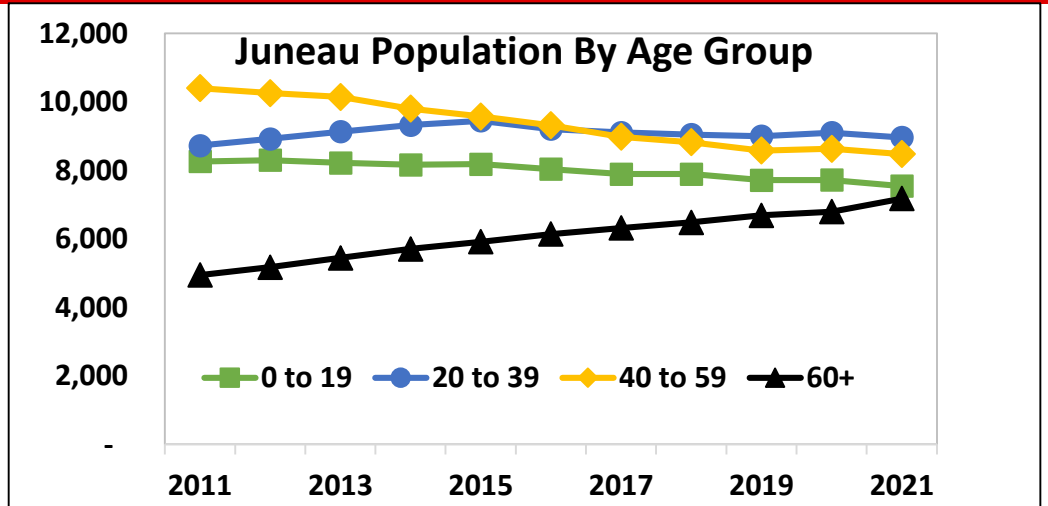
(%) ■ 2018 ■ 2050



[www.aarp.org/content/dam/aarp/research/surveys\\_statistics/econ/2020/longevity-economy-outlook-alaska.doi.10.26419-2Fint.00044.002.pdf](http://www.aarp.org/content/dam/aarp/research/surveys_statistics/econ/2020/longevity-economy-outlook-alaska.doi.10.26419-2Fint.00044.002.pdf)

# Juneau's Senior Economy

- Juneau's Senior population (60+) has steadily grown 39% (3.3% annually) between 2012 and 2021
  - Only Juneau age group that is growing
  - Alaska Dept of Labor expects this to continue through at least 2030
- Juneau sees \$126 million (12% of Borough income) in Social Security and Retirement Benefits in 2020
  - Supplemental Security and Public Assistance are tiny and not included in Social Security (US Census Bureau)
- 26% of Juneauites ages 60 and over volunteer once a week or more
  - 46% of this age group volunteers once a month or more (2020 Juneau Senior Survey)



Short 3 minute video describing a livable community



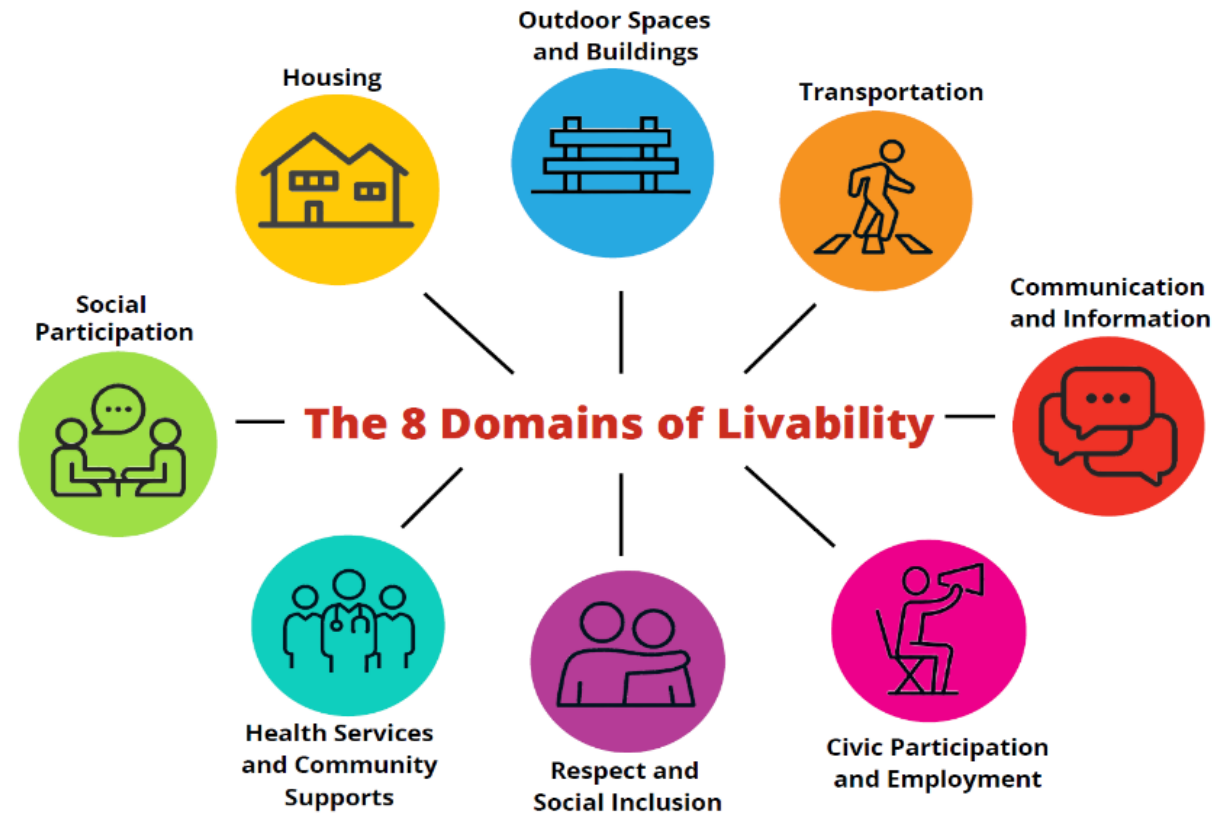
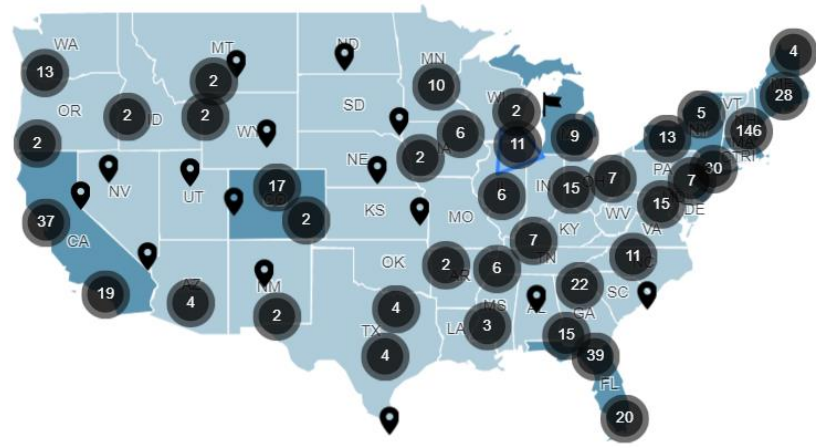
## What is a Livable Community?



Watch this video —  
and learn more at  
***[AARP.org/Livable](https://www.aarp.org/Livable)***

[www.aarp.org/livable-communities/featured-videos/](https://www.aarp.org/livable-communities/featured-videos/)

# The AARP Network of Age-Friendly States and Communities



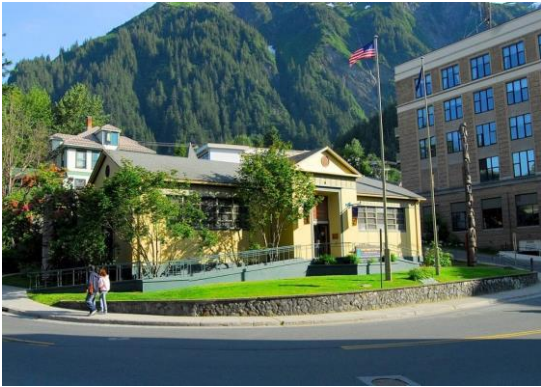


# The 8 domains of livability are linked to CBJ 2022 priorities

- Outdoor Spaces and Buildings, working with Parks & Rec: Priorities 2.D., 2.E., 2.F.
- Transportation, New transit center, Capital AKCess
- Housing, Highest Assembly priority, 1.B., 1.C., 1.D.
- Social Participation, 4.A., 4.B., 4.C.
- Respect and Social Inclusion, 4.A., 4.B., 4.C.
- Work and Civic Engagement, Priority 2.
- Communication and Information
- Community and Health Services, 3.F.

# Age-Friendly in Juneau

Juneau has volunteer, social, civic and work opportunities.



Juneau has safe and accessible public spaces.



Juneau has access to health care services.

Juneau has ways to remain mobile once driving is no longer an option.



Juneau is focused on housing that is affordable, accessible and varied in type.

# Additional Juneau Age-Friendly Examples

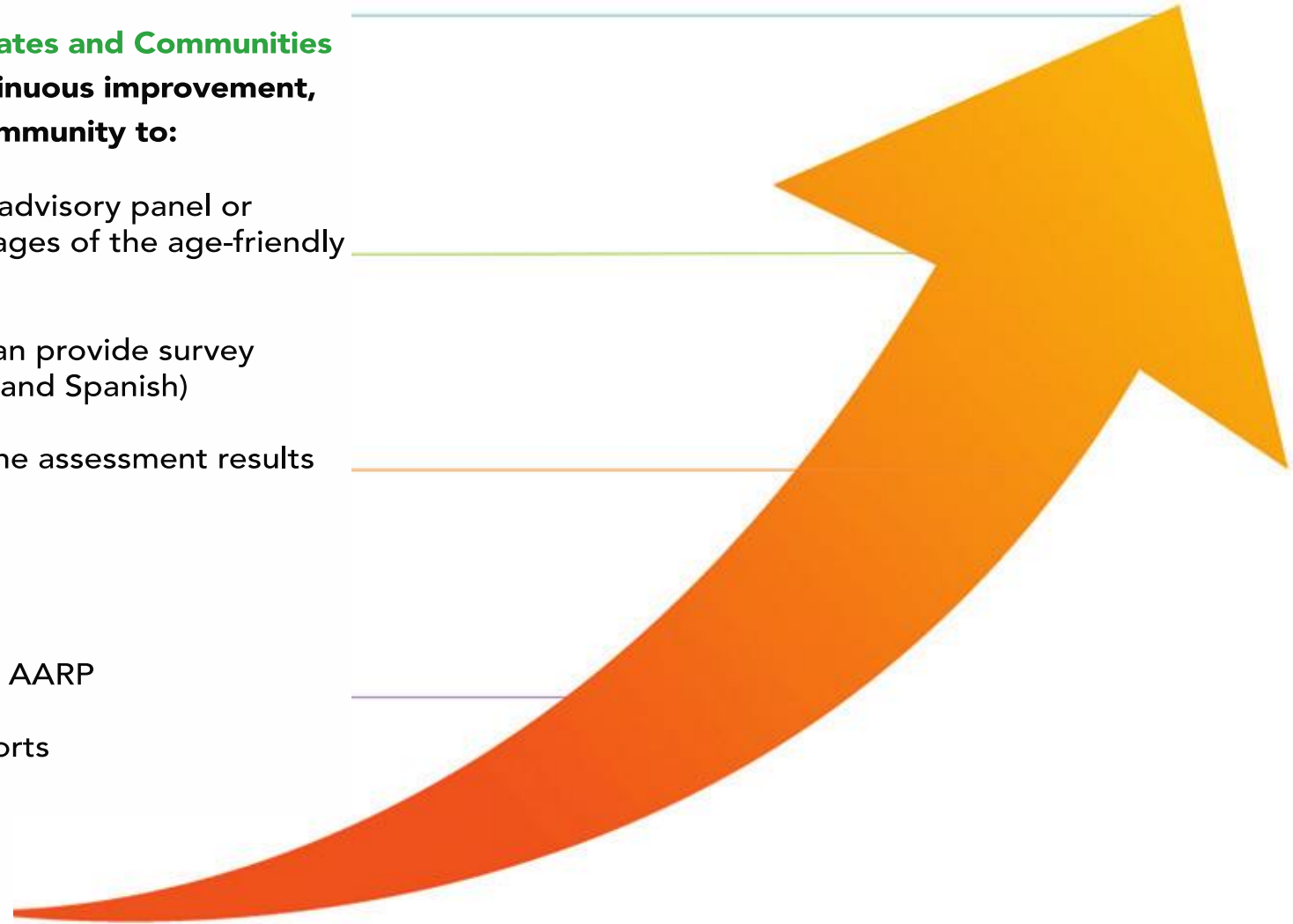
- Accessible Buses (Capitol City Transit/Capital-AKcess)
- Concerts/Events at the Whale
- First Friday Gallery Walk
- Community Gardens
- Parks and Trails (e.g. Twin Lakes, Savikko Park and Treadwell Trails)
- Augustus Brown and Dimond Park Pools
- Pickleball
- Fresh Aire Markets



# The Age-Friendly Process and Program Cycle

Members of the **AARP Network of Age-Friendly States and Communities** commit to an assessment process and cycle of continuous improvement, the steps of which typically require the member community to:

1. Establish a way — such as through a commission, advisory panel or focus groups — to include older residents in all stages of the age-friendly planning and implementation process
2. Conduct a community needs assessment (AARP can provide survey examples, templates and an online tool in English and Spanish)
3. Develop an action and evaluation plan based on the assessment results
4. Submit the plan for review by AARP
5. Implement and work toward the goals of the plan
6. Share solutions, successes and best practices with AARP
7. Assess the plan's impact and submit progress reports
8. *Repeat!*





Go for a walk



Cross the streets



Ride a bike



Be entertained



... and make their city,  
town or neighborhood  
a lifelong home.



Get around without a car



Live safely and  
comfortably



Work or volunteer



Find the services they need



Buy healthy food

# What does “age-friendly” look like in other communities?

# Input on Making Juneau More Age-Friendly

**We will be asking community members for ideas--**

- How can we make Juneau more friendly for seniors and people of all ages?
- How can we work together to make improvements that matter to seniors including:
  - Social events
  - Parks and outdoors areas
  - Opportunities to volunteer and make positive changes in our community
  - Housing
  - Transportation
  - Access to medical care and other health services
  - Respect and Inclusion for seniors and everyone





If you build a community great for  
**older adults** you build a  
community great for **everyone**

# Resources

**Who makes it happen?** A local volunteer committee made up of members of the Juneau Commission on Aging, the Juneau AARP Community Action Team, and other interested volunteers from across the community.

**How much does it cost?** It doesn't cost anything to join and there is no annual or membership fee. The only costs may be a small stipend to the Commission on Aging to support local efforts of the Juneau Livable Communities Committee.

**What resources are available?** AARP has many online resources and newsletters and online forums on webinars enable information sharing across the vast network of Age Friendly Communities and States. Experts in transportation, housing, healthcare, outdoor spaces and other livability domains are available as consultants.

**What has happened to date?** We have gathered support letters from local organizations including SAIL, Catholic Community Services, Bartlett Hospital, Alzheimer's Resource of Alaska, Juneau Rotary, and many individuals and local physicians.

**What are we requesting?** Membership in the Network requires an Assembly Resolution to support application to become an Age Friendly Community.



# Additional information

---

## Juneau Commission on Aging

Emily Kane, JCOA Chair [DrEmilyKane@gmail.com](mailto:DrEmilyKane@gmail.com)

907-723-5599

## AARP Juneau Community Action Team

Linda Kruger, AARP Lead [lindalaska2003@gmail.com](mailto:lindalaska2003@gmail.com)

907-957-0335

## AARP Alaska

3601 C Street #1420

Website: [www.aarp.org/ak](http://www.aarp.org/ak)

Twitter: [@AARPAAlaska](https://twitter.com/AARPAAlaska)

Facebook: [Facebook.com/aarpak](https://www.facebook.com/aarpak)