

CBJ Employee Office Space Floyd Dryden & Marie Drake Uses

Is the Assembly comfortable proceeding with negotiating a lease for the Burns building for downtown CBJ employees?

Establish Assembly priorities for Marie Drake and Floyd Dryden from which to design a public process soliciting proposal from organizations

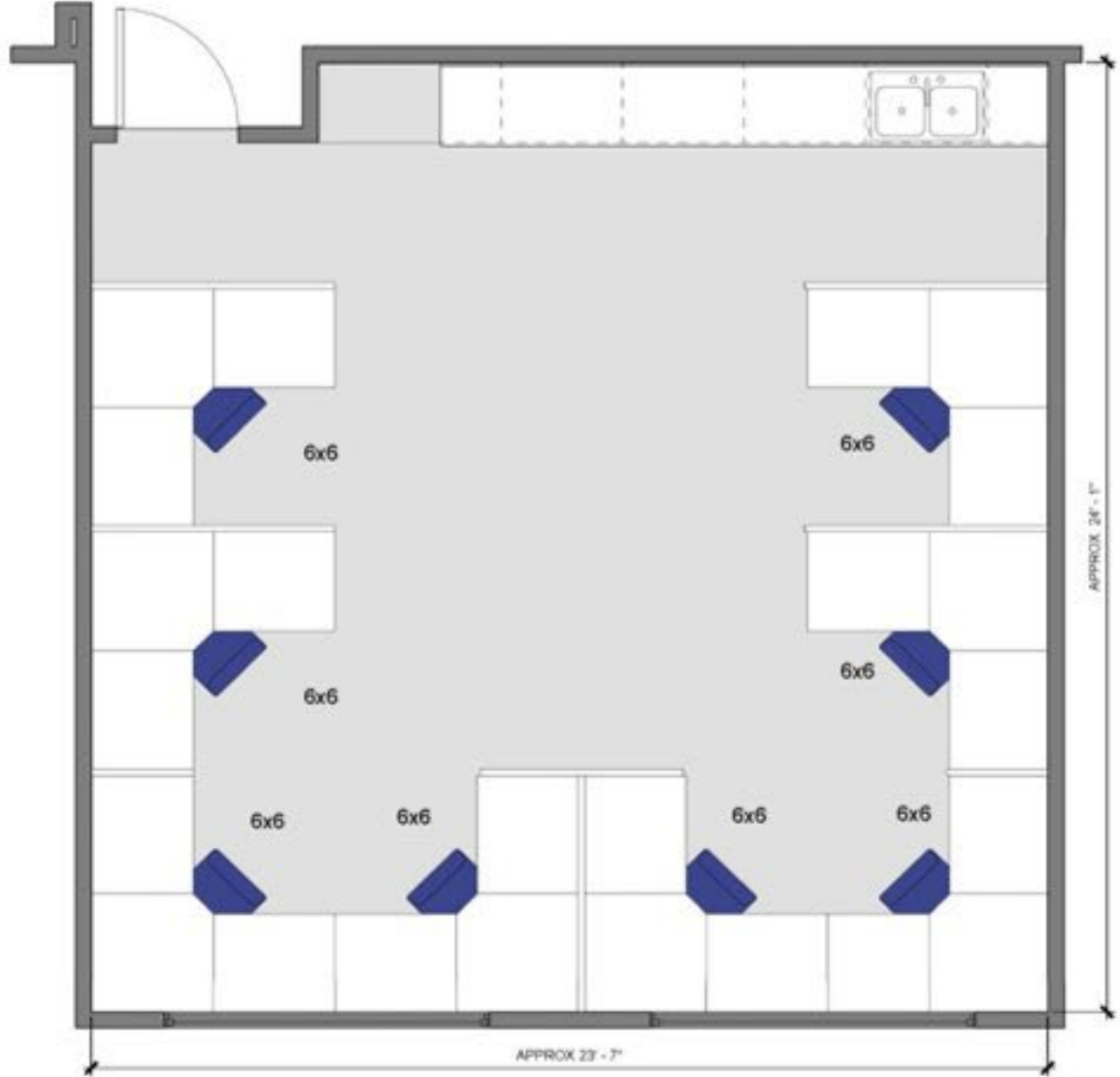
Marie Drake

Bathroom



Classroom



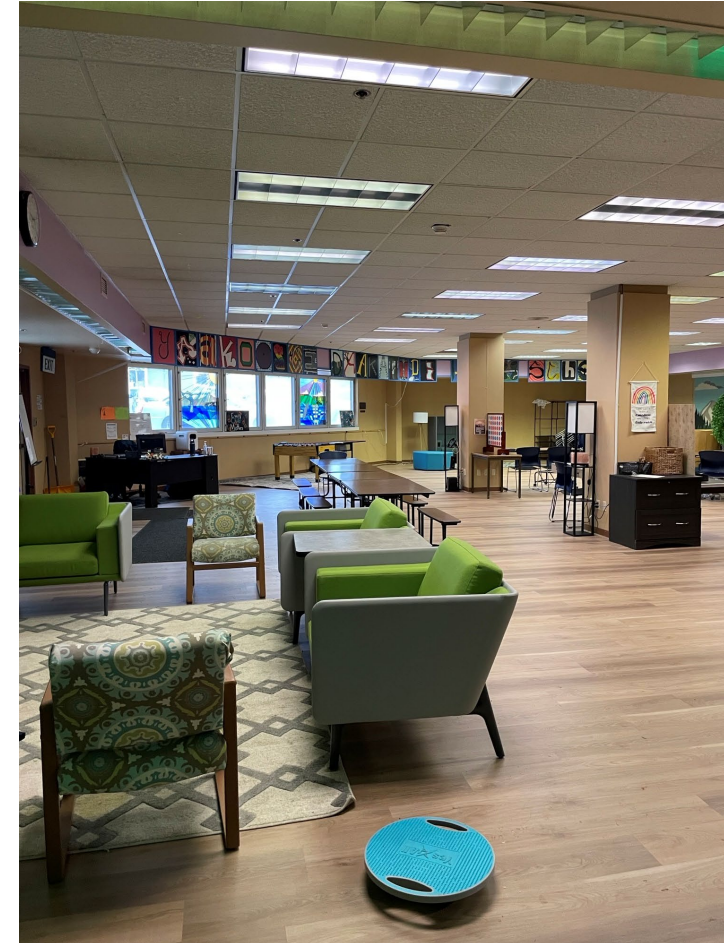


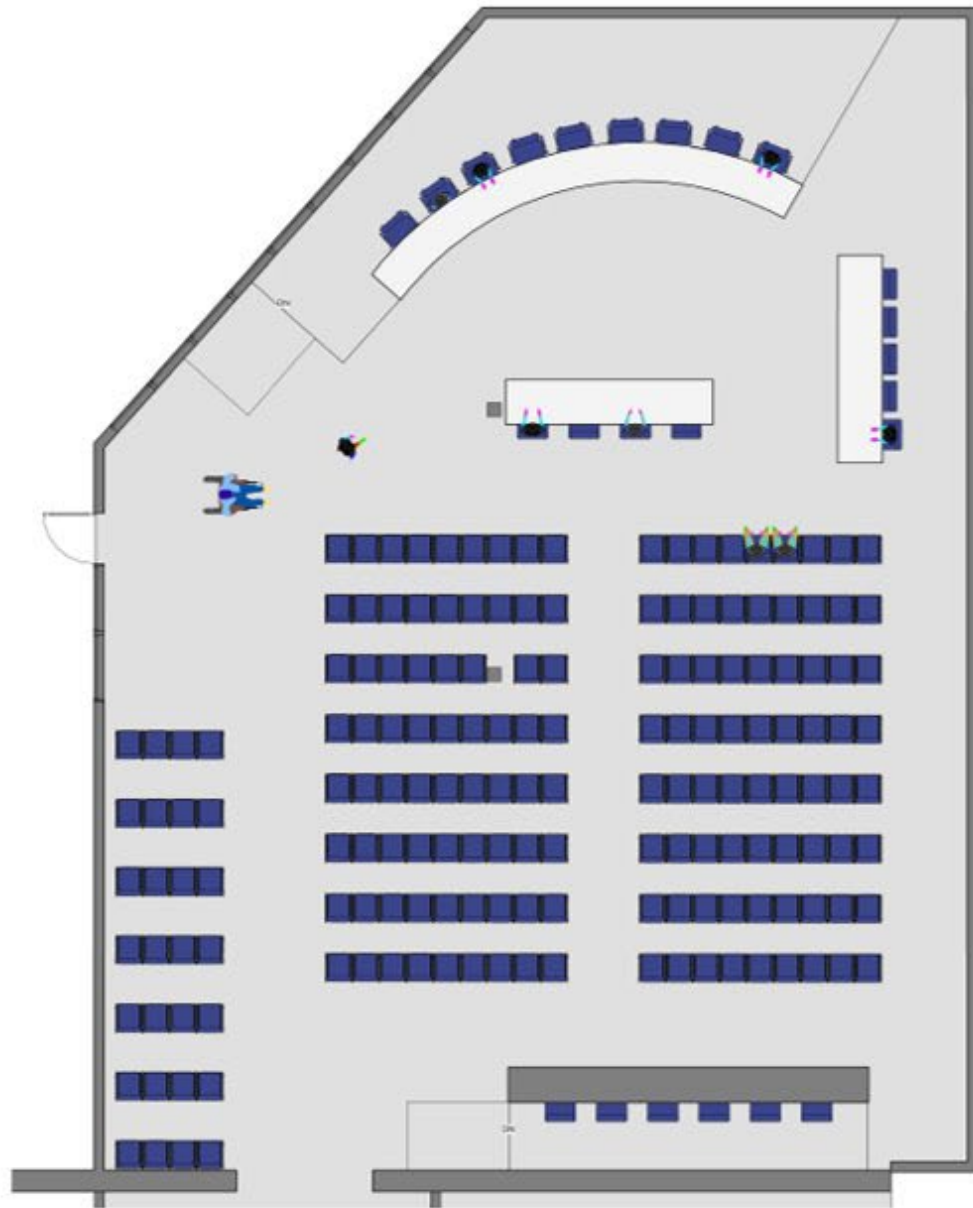
24x24 classrooms yield 6x6 workspace with little privacy



MARIE DRAKE CLASSROOM - PERSPECTIVE VIEW

Marie Drake Commons: Potential Chambers





Awkward Shape
Columns
Low Ceilings

MARIE DRAKE ASSEMBLY CHAMBERS - FLOOR PLAN

Timeline for solicitation of ideas for community use of school facilities

- 4.15.24 COW – Assembly gives direction on what it would like to see in new community spaces at Marie Drake and Floyd Dryden. Releases guidance to public soon thereafter.
- 5.6.24 PWFC reviews submissions from organizations and ranks them for Assembly review (staff works with organizations to flush out questions from PWFC).
- 6.3.24 COW reviews proposed uses and budget impact. Refines potential uses and issues survey/process to collect broader public input.
- 7.15.24 /COW review public input and discuss next steps to implement desired uses.

How important is it to keep this moving quickly?

Floyd Dryden



Floyd Dryden

Classroom



Bathroom



Floyd Dryden Commons

Potential Chambers



Michael J. Burns Building Home of the Permanent Fund Corporation



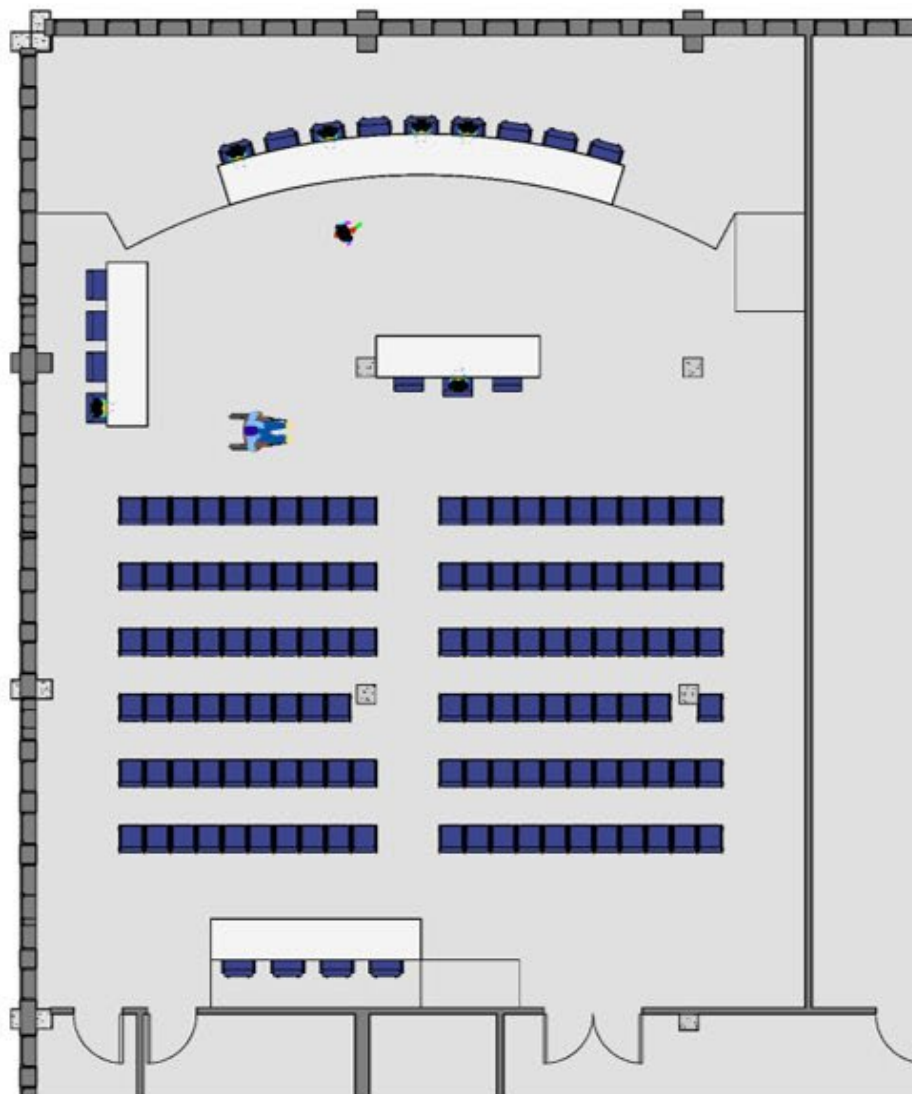
Burns Chambers (Board of Education Room)

Chambers



Kitchenette adjacent to chambers





MICHAEL J. BURNS BUILDING ASSEMBLY CHAMBERS - FLOOR PLAN



MICHAEL J. BURNS BUILDING ASSEMBLY CHAMBERS - PERSPECTIVE VIEW

JSD Administration Building

Conference Room



Hallway





Marie Drake

Central District Office

DCI Parking
70 spaces

400 ft

Burns Building

Burns Parking
87 spaces

CCFR

1850 ft
0.35 miles

450 Whittier
45 spaces

JACC/CH
100 spaces

Recommendation

1. Authorize staff to proceed with negotiations on leasing the Burns building
2. Discuss Assembly priorities for Marie Drake and Floyd Dryden from which to design a public process soliciting proposed uses from organizations with the understanding that Tlingit and Haidia has already proposed a use for a portion of Floyd Dryden.

Potential Guidance (discuss and amended as appropriate)

- Aligned with Assembly priorities/ goals (such as childcare and housing)
- Impact on CBJ budget
- Parking requirements
- Level of retrofit needed for proposed idea (and who would pay for it)
- Compatible uses (multiple tenants will likely share the space)
- Keep gym spaces available for public use, coordinated by Parks and Recreation, especially after regular businesses hours