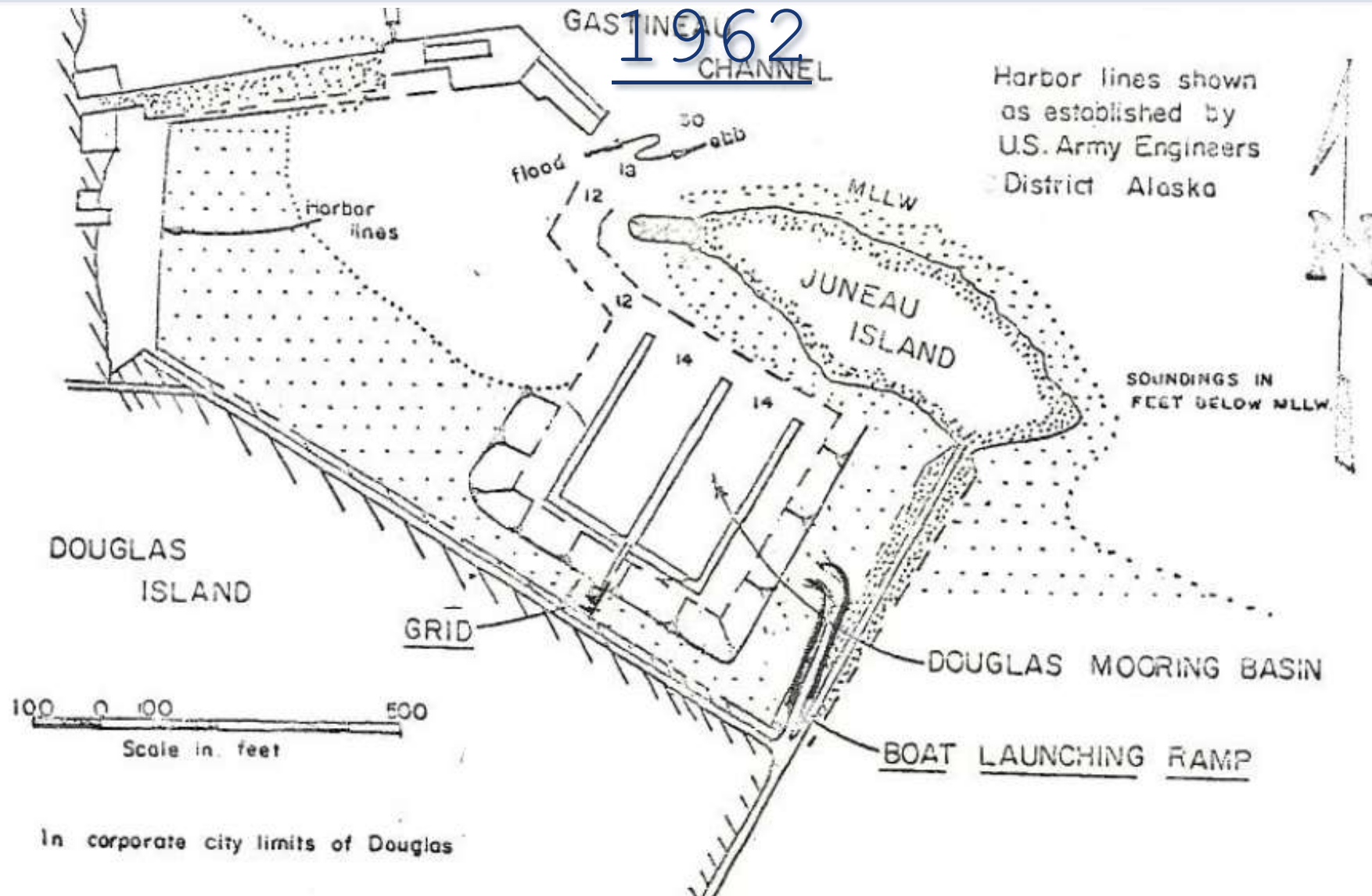




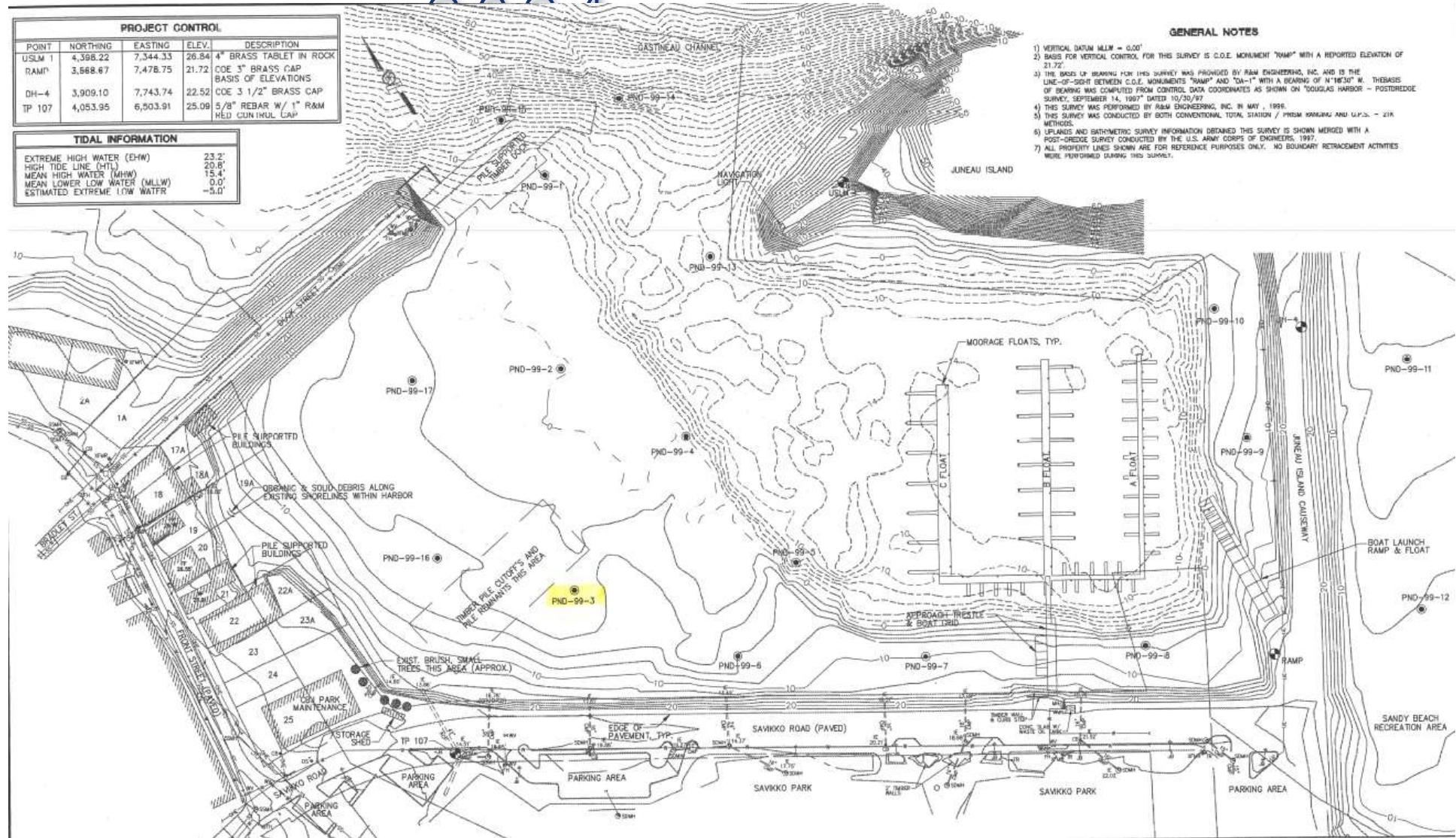
# Mike Pusich Douglas Harbor - Circa





# Recapitalization & Expansion: 2000 -

- Harbor facility in 2000 essentially unchanged from 1962.





# Douglas Harbor Investment Facilitated by D&H: Approx. \$31M

**2001** - Douglas Harbor Uplands and Moorage Expansion - Phase I **(All Phases \$10M)**

**2001** - Douglas Harbor Uplands and Moorage Expansion - Phase 2 **(All Phases \$10M)**

**2002** - Douglas Harbor Log Boom Breakwater **\$115,000**

**2003** - Douglas Harbor Uplands and Moorage Expansion - Phase 3 **(All Phases \$10M)**

**2005** - Douglas Harbor Sewer Pumpout **\$189,243**

**2008** - Douglas Harbor City Dock Demolition **\$460,000**

**2008** - Douglas Harbor Floating Breakwater **\$1,200,000**

**2009** - Douglas Harbor Rubble Mound Breakwater

Extension **4,300,000 (\$1,100,000 LOCAL FUNDS)**

**2010** - Douglas Harbor Uplands Improvements **\$257,333**

**2015** - Old Douglas Harbor Demolition (Phase I) **\$362,486**

**2015** - Douglas Harbor Dredging (Phase II) **\$6,917,100**

**2015** - Douglas Harbor Renovation (Phase III) **\$6,623,156**

**2018** - Douglas Harbor Sewer Barge **\$58,343**

**2020** - Douglas Harbor Anodes **\$184,603**

**2024** - Douglas Harbor Lighting Improvements **\$75,000**



# What's left? Work remaining:

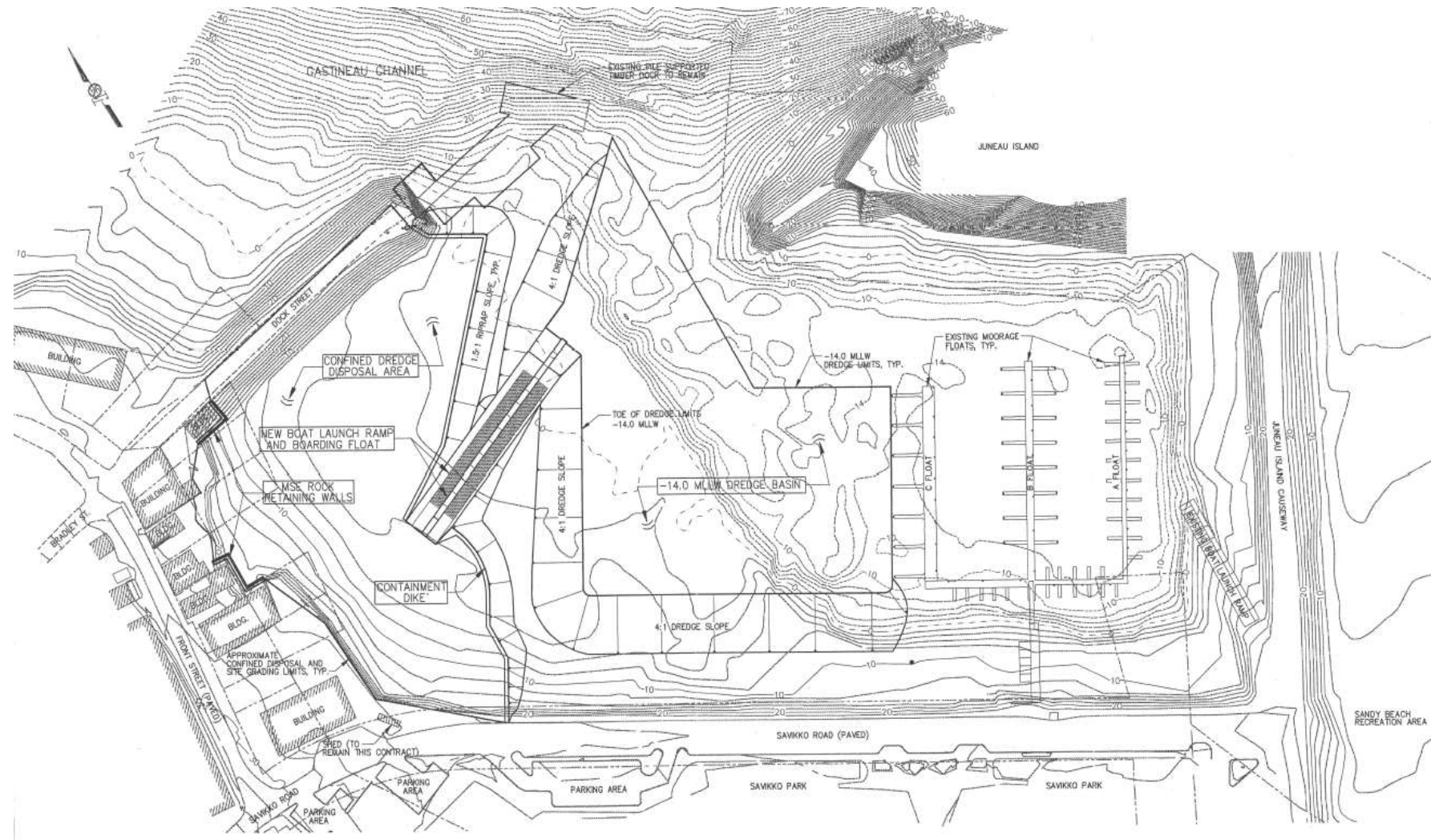
- Paving
- Curb & Gutter
- Striping
- Lighting
- Seawalk
- Landscaping
- Restrooms/Showers
- **Anything Else?**





# Juneau Harbor Uplands and Moorage Expansion - Phase I

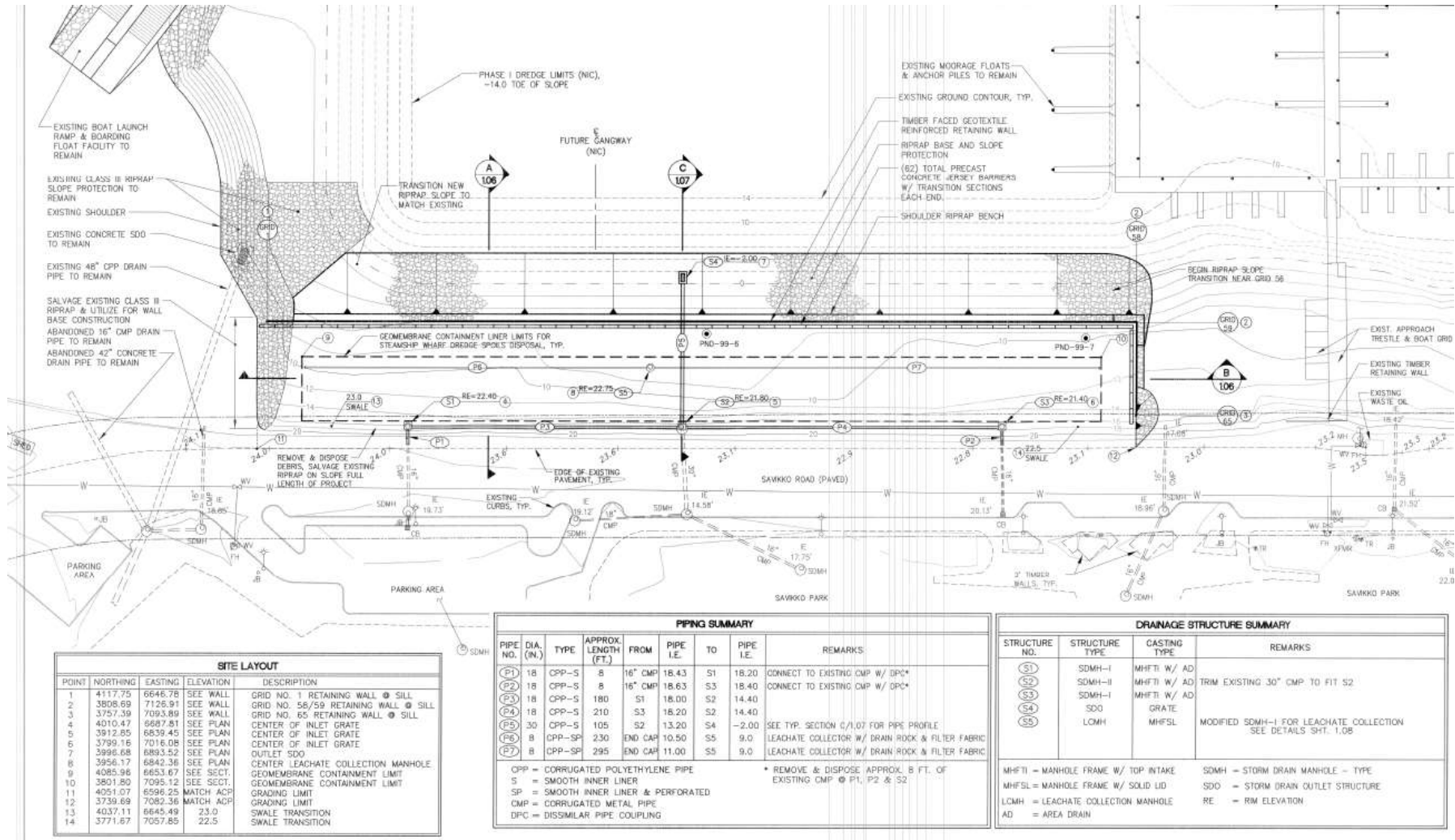
- Phase I - Dredging, Launch Ramp & Parking Expansion





# Juneau Harbor Uplands and Moorage Expansion - Phase II

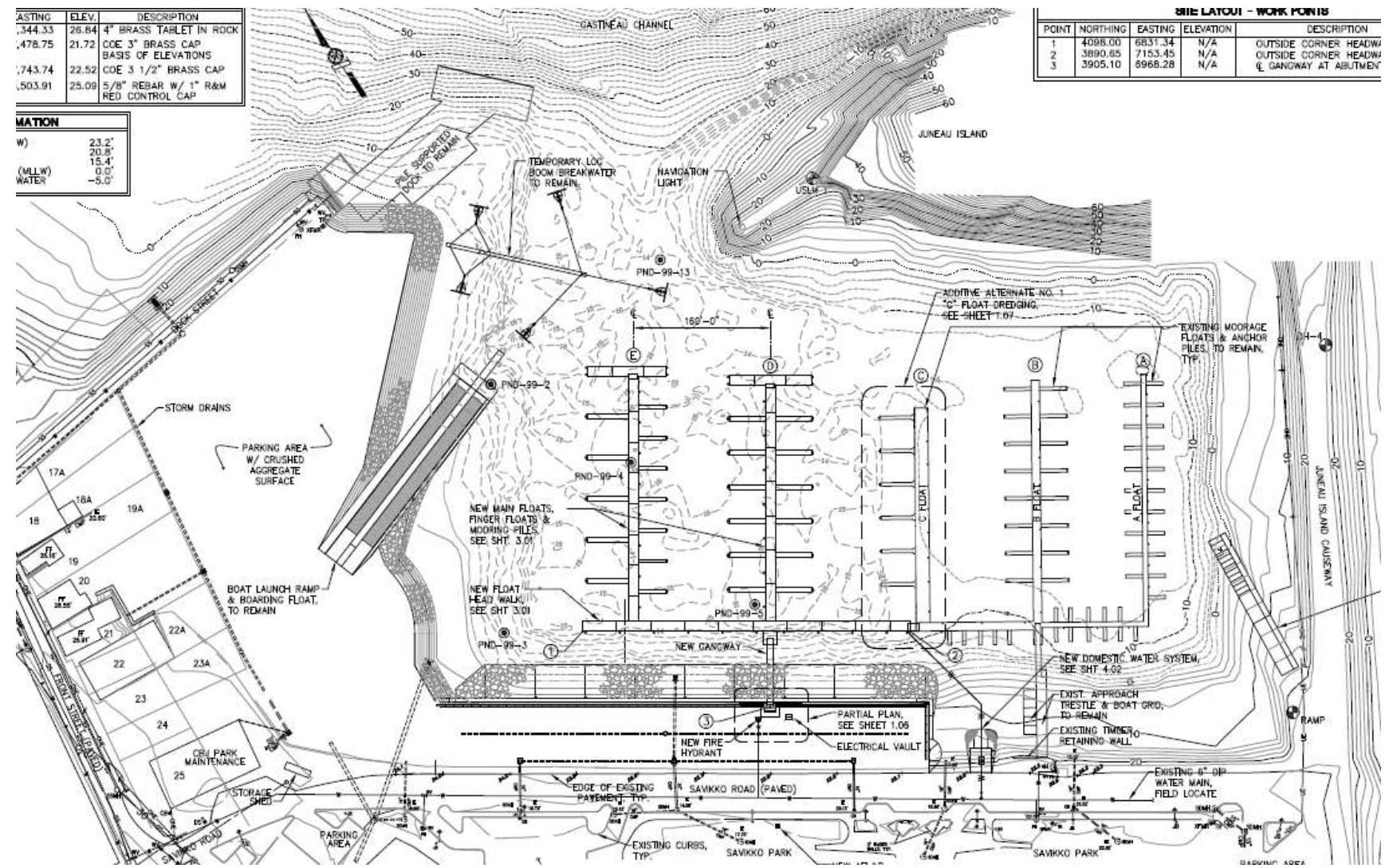
- Phase II - Parking Expansion/Retaining Wall





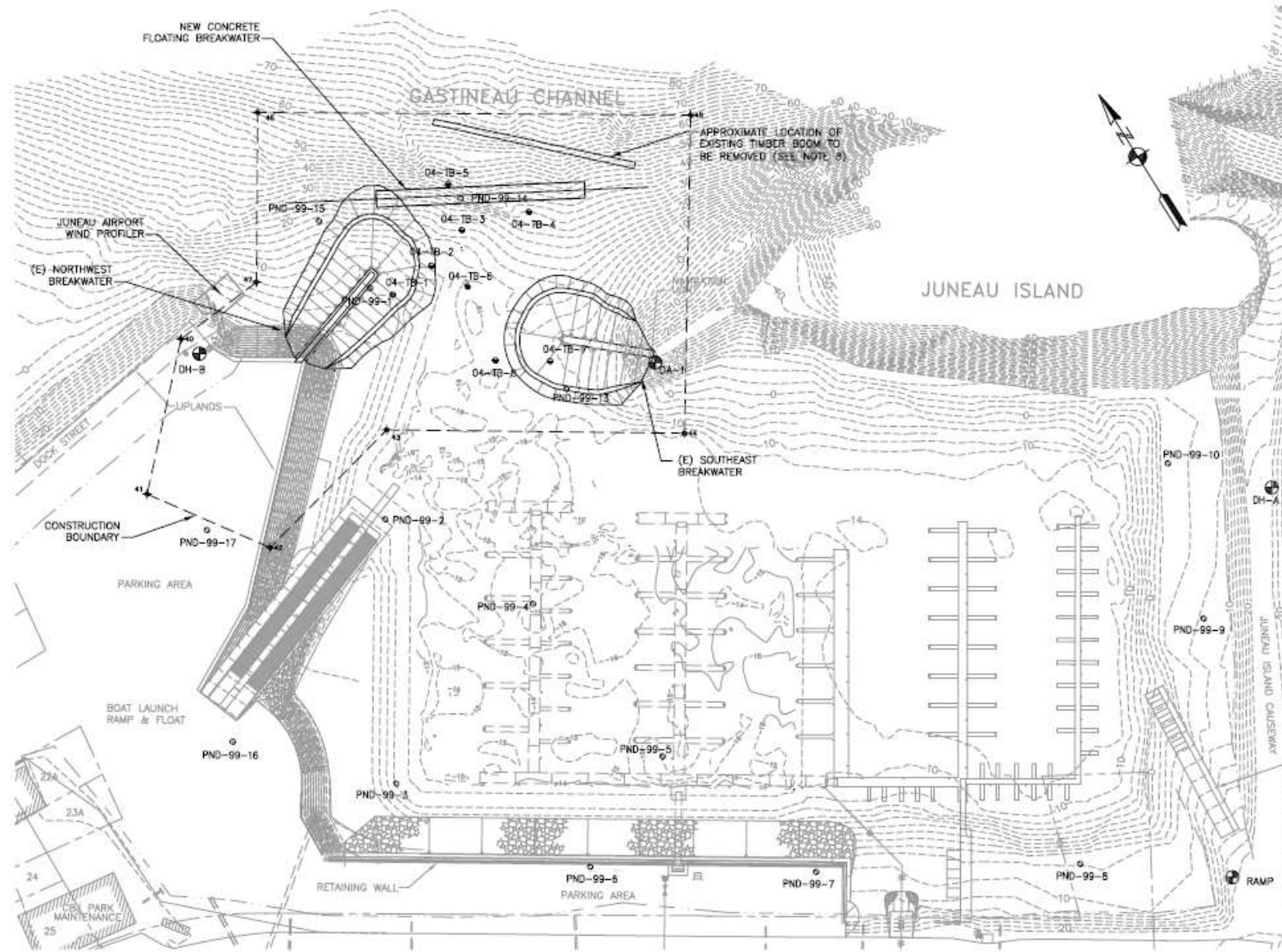
# Juneau Harbor Uplands and Moorage Expansion – Phase III

- Phase III – North Harbor Construction. New gangway, new headwalk, mainwalk floats D and E and utilities.





# Douglas Harbor Navigation Improvements

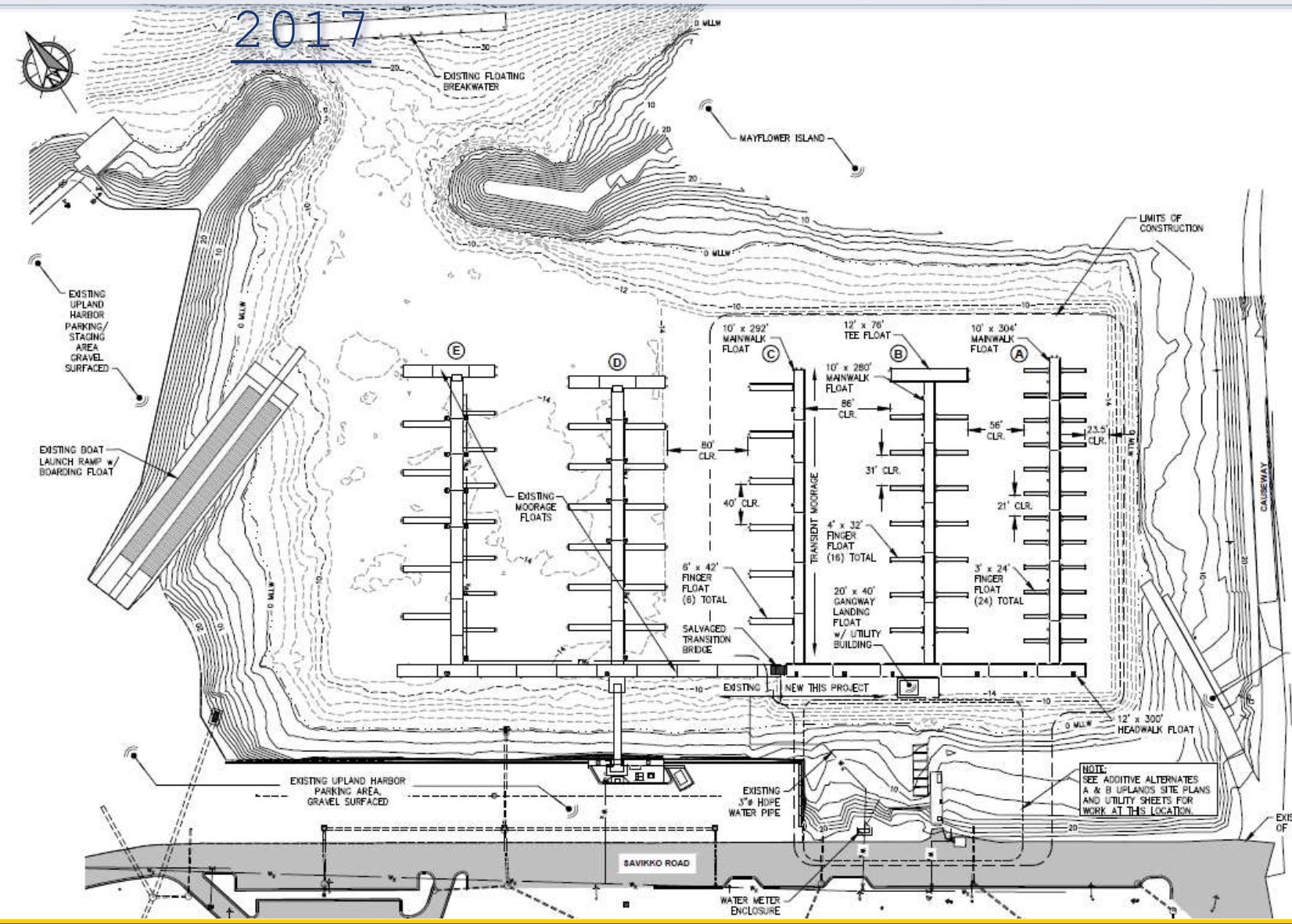






# Juneau Douglas Harbor Renovation Phases I - III: 2005 -

- Phase I - Demolition of existing floats
- Phase II - Dredging and off shore disposal
- Phase III - New Floats A, B, and C, new gangway and new seawall.
- \$1M spent on Environmental consultation.
- Project delayed over a decade.





# Douglas Harbor Safety Improvements:

## PROJECT HIGHLIGHTS:

- ✓ One new lightpole and LED luminaire installed at the top of the launch ramp.
- ✓ 4 new lightpoles and LED luminaires installed in the parking lot near the two pedestrian gangways.
- ✓ Dramatic safety improvement for harbor users.
- ✓ Final Cost: \$75,000

