



JUNEAU'S SOLID WASTE

Dianna Robinson

**Environmental Project Specialist
Engineering & Public Works
Dianna.Robinson@Juneau.gov**

JANUARY 27, 2025

JUNEAU WASTE 101

SERVICE*

HAULING

DISPOSAL

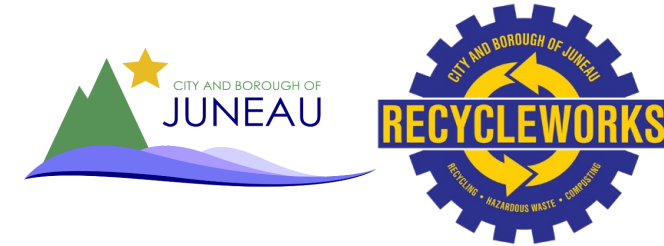
CBJ

HAULS WASTE AND
CURBSIDE RECYCLING TO
LANDFILL

LANDFILL ACCEPTS
WASTE

RECYCLING CENTER
JUNK VEHICLE PROGRAM
HOUSEHOLD HAZARDOUS
WASTE

PROVIDER



OWNERSHIP

PRIVATELY OWNED

PRIVATELY OWNED

PUBLIC ENTITY

**REGULATORY
BODY**

REGULATORY COMMISSION
OF ALASKA (RCA)

STATE: ALASKA DEPARTMENT
OF ENVIRONMENTAL
CONSERVATION (DEC)

FEDERAL: ENVIRONMENTAL
PROTECTION AGENCY (EPA)

SPECIFIC ADEC OR EPA
REGULATIONS APPLY
SITUATIONALLY

***IN ADDITION TO THE LISTED SERVICES, JUNEAU COMPOSTS! ACCEPTS FOOD, YARD WASTE, AND OTHER ORGANICS;
SKOOKUM SALES & RECYCLING AND D&S RECYCLING ALSO ACCEPT SCRAP METALS AND EWASTE.**

2024

**JUNEAU
ASSEMBLY
GOAL 5.A**

**IMPLEMENT A ZERO
WASTE OR WASTE
REDUCTION PLAN,
INCLUDING
DEVELOPMENT OF THE
ZERO WASTE
SUBDIVISION**

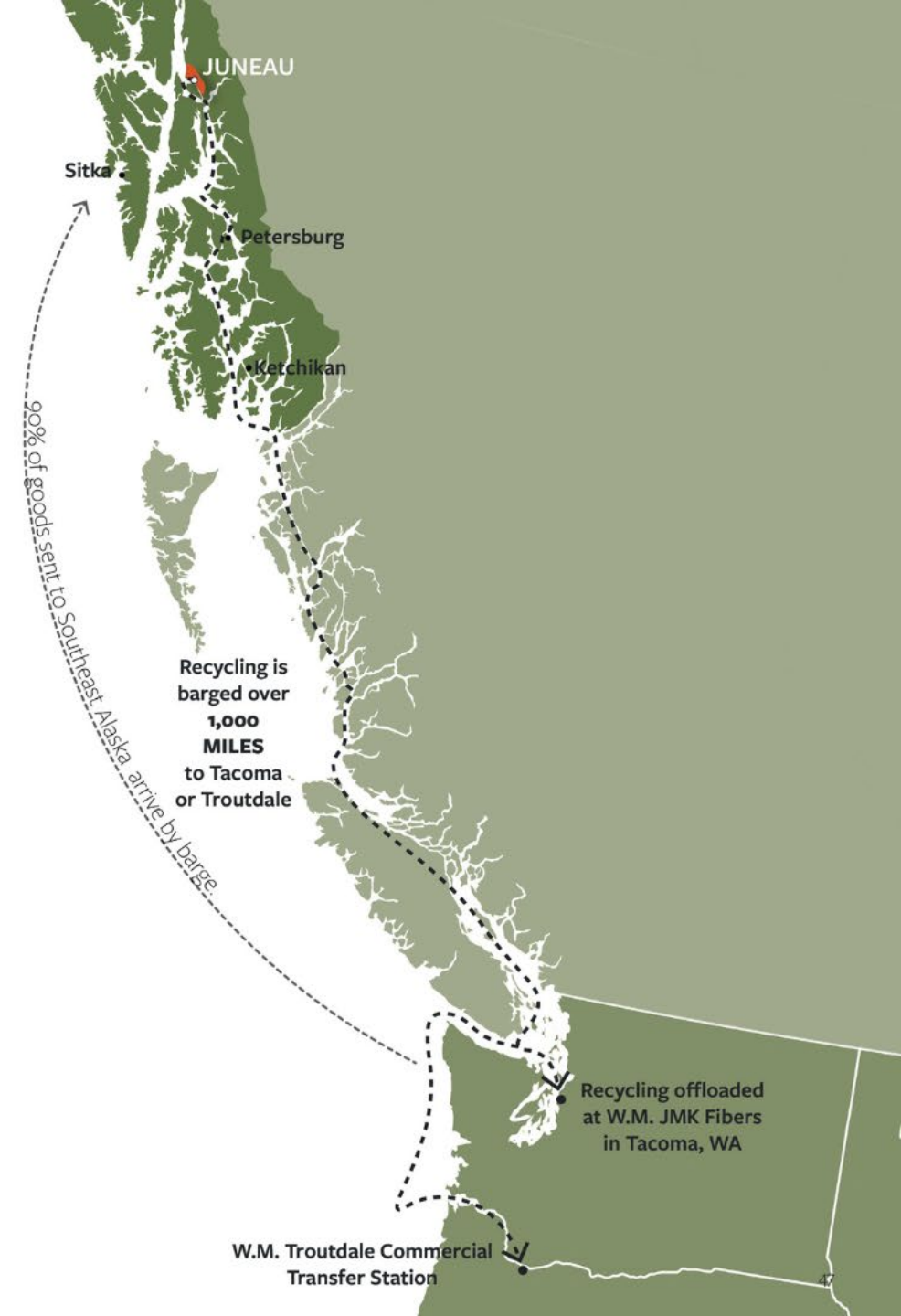
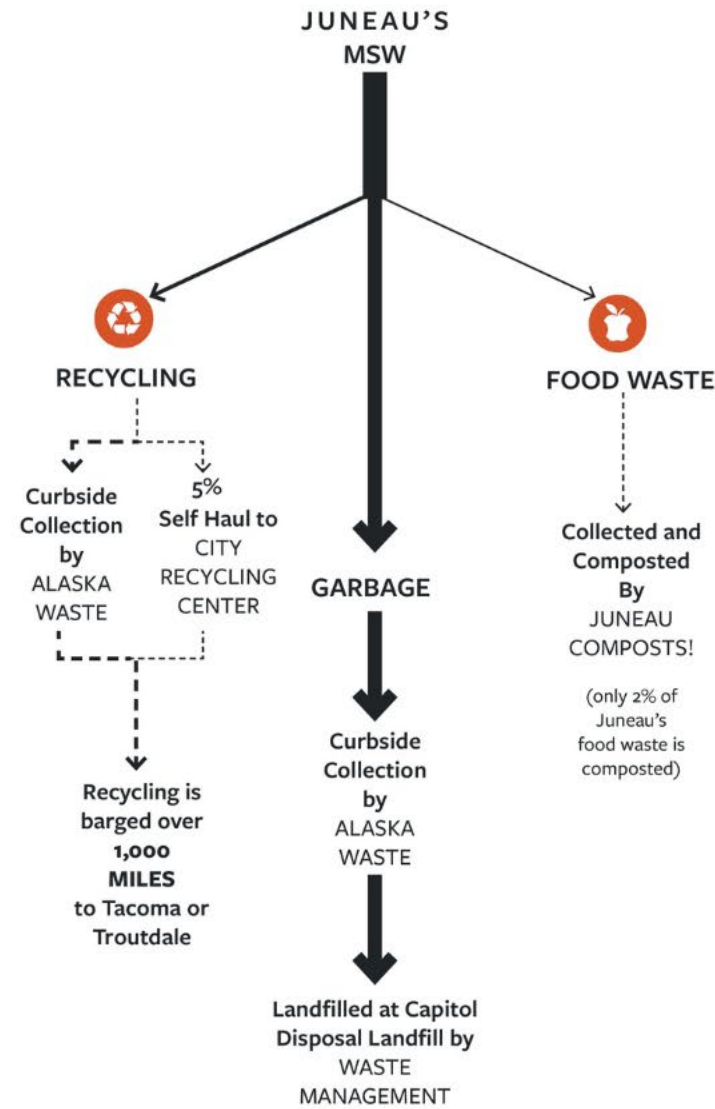
ZERO WASTE

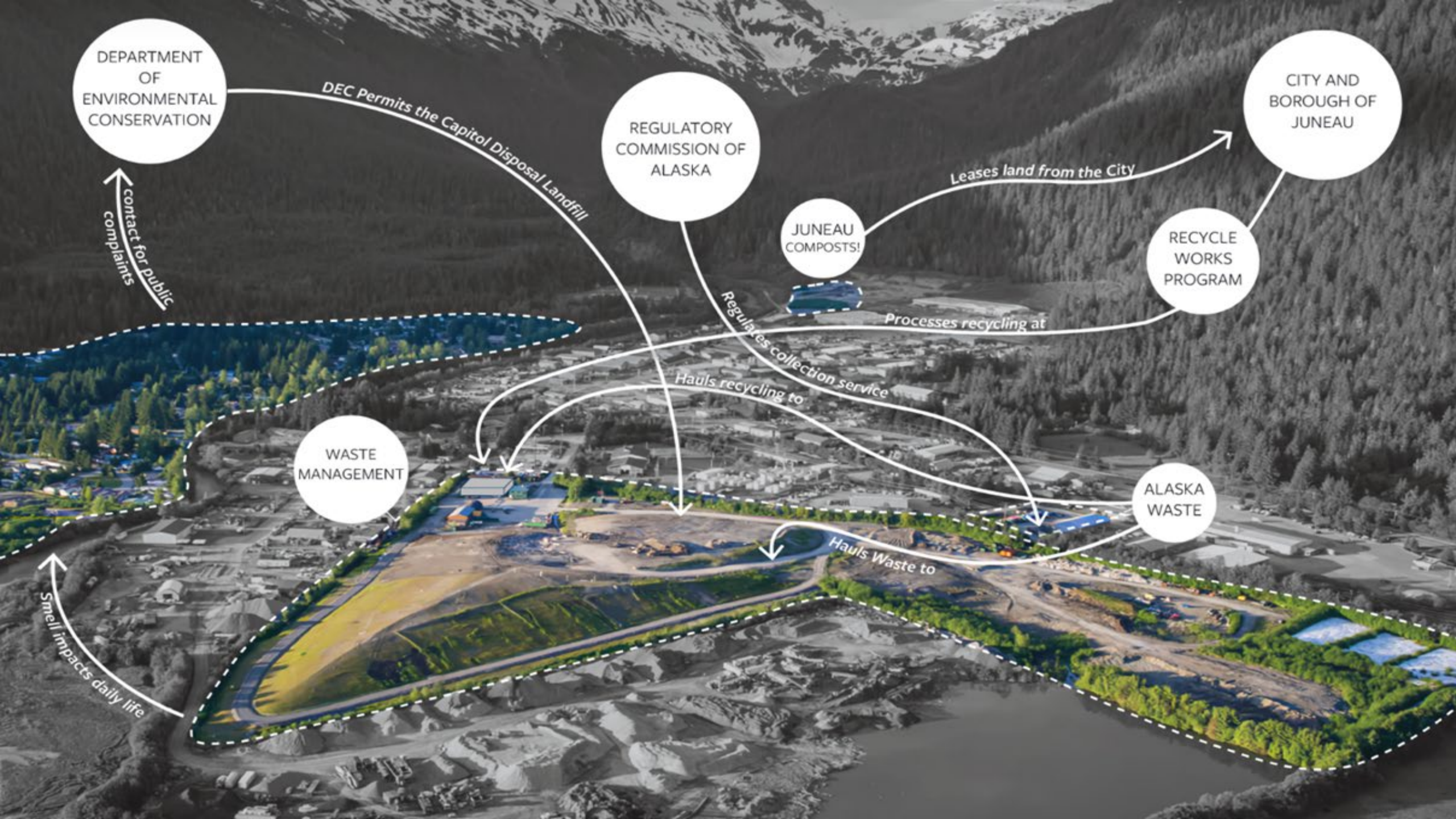
- **Implementation takes a long time**
 - Planning
 - Permitting
 - Construction
 - Behavior Change

**JUNEAU'S
DISPOSAL NEEDS
ARE IMMEDIATE**

**JUNEAU'S
LANDFILL
WILL CLOSE
WITHIN
10 YEARS**

JUNEAU WASTE FLOWS





DEPARTMENT OF ENVIRONMENTAL CONSERVATION

DEC Permits the Capitol Disposal Landfill

REGULATORY COMMISSION OF ALASKA

JUNEAU COMPOSTS!

CITY AND BOROUGH OF JUNEAU

RECYCLE WORKS PROGRAM

WASTE MANAGEMENT

ALASKA WASTE

Complaints
contact for public

Leases land from the City

Processes recycling at

Regulates collection service
Hauls recycling to

Hauls Waste to

Smell impacts daily life



JUNEAU'S 2023 WASTE PRODUCTION AND DIVERSION

JUNEAU LANDFILLED:

- 22,346 tons of municipal solid waste (MSW)
- 5,176 tons of construction and demolition waste (C&D)

CBJ DIVERTED:

- 993 tons of recyclables (~4% of waste stream)
- 286 tons of HHW (~1% of waste stream)

ALASKA WASTE DIVERTED:

- 665 tons of comingled recycling (~3% of waste stream)

JUNEAU COMPOSTS! DIVERTED:

- ~250 tons of food waste (~1% of waste stream)

SOLID WASTE BARRIERS

CBJ DOES NOT OWN/CONTROL JUNEAU'S WASTE STREAM

CBJ DOES NOT OWN/CONTROL THE LANDFILL

OUR ONLY LANDFILL WILL CLOSE WITHIN THE NEXT 10 YEARS

CBJ HAS NEVER HAD A FULLSCALE SOLID WASTE PROGRAM

SEASONAL POPULATION ADDS COMPLEXITY

GROWING GOVERNMENT IS DIFFICULT

RECYCLING AND COMPOSTING INFRASTRUCTURE COSTS \$\$\$

SOLID WASTE DISPOSAL INFRASTRUCTURE COSTS \$\$\$

FEDERAL SOLID WASTE FUNDING OPPORTUNITIES ARE INFREQUENT AND INADEQUATE

LACK OF COMPETITION = LACK OF OPTIONS

SHIPPING WASTE AND RECYCLING COSTS \$\$\$

SEE ALASKA'S GEOGRAPHY MAKES FACILITY SITING DIFFICULT

TRANSPORTATION LOGISTICS ARE COMPLEX AND ROUTES ARE INEFFICIENT

LACK OF CONTROL

FLOW CONTROL

Flow controls are legal provisions that allow state and local governments to designate the places where municipal solid waste (MSW) is taken for processing, treatment, or disposal.

Because of flow controls, designated facilities may hold monopolies on local MSW and/or recoverable materials.*

*US Environmental Protection Agency

PUBLIC VS. PRIVATE OWNERSHIP BY COMMUNITY

In Alaska, the Regulatory Commission of Alaska (RCA) regulates waste hauling as a utility, but NOT disposal.

Juneau's low population means there is only one public utility certificate for waste hauling.

Alaska Waste owns this certificate in Juneau. They are beholden to their ratepayers/RCA

PUBLICLY OWNED DISPOSAL AND/OR HAULING		100% PRIVATELY OWNED
Anchorage Yakutat Homer Seward Ketchikan Sitka Kodiak Skagway Wrangell Petersburg Fairbanks Bethel Angoon North Slope	Valdez Cordova Cold Bay King Cove Nome Denali Hoonah Kotzebue Bristol Bay Palmer/MatSu Pelican Thorne Bay Angoon And more...	Haines Glenallen <u>JUNEAU</u>

FLOW CONTROL IN ALASKA

LANDFILLS ARE NOT REGULATED AS A UTILITY IN ALASKA

SOLID WASTE PLANNING

2024

**WASTE
CHARACTERIZATION
STUDY**

WASTE CHARACTERIZATION STUDY

Sector	2023 Disposed Waste Tonnage
Overall Commercial	11,388.13
<i>Commercial Packer</i>	<i>6,028.61</i>
<i>Commercial Roll-Off</i>	<i>5,359.52</i>
Residential	7985.00
Self-Haul	2,972.79
Total	22,345.92

Table 1. Disposed Waste Tons by Sector, 2023

Table 2 - Overall Disposed Waste (by Recoverability)

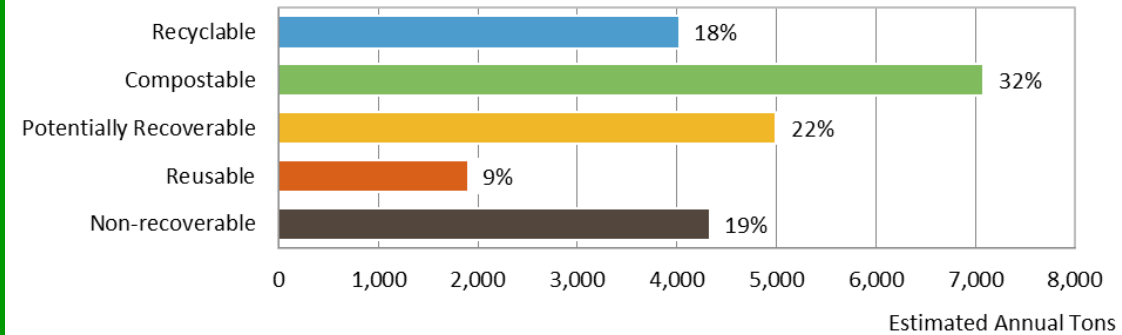
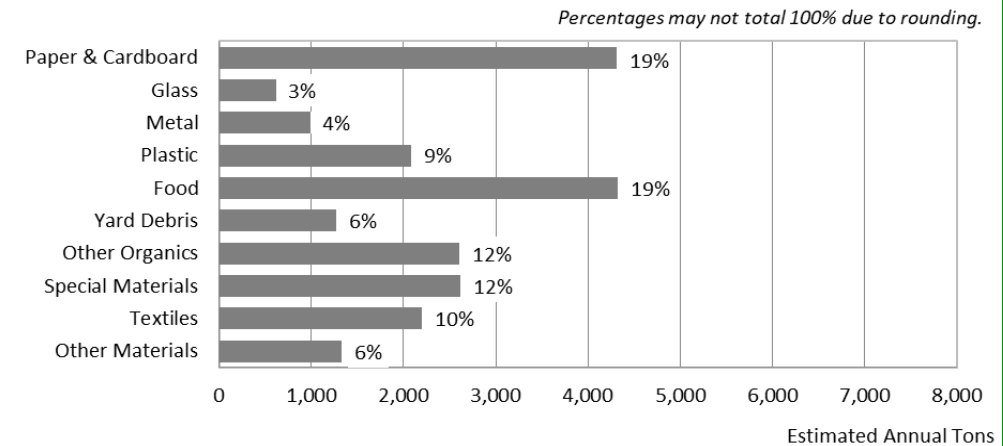


Table 3 - Overall Disposed Waste (by Material Class)



SOLID WASTE PLANNING

2024-25

DISPOSAL OPTIONS STUDY

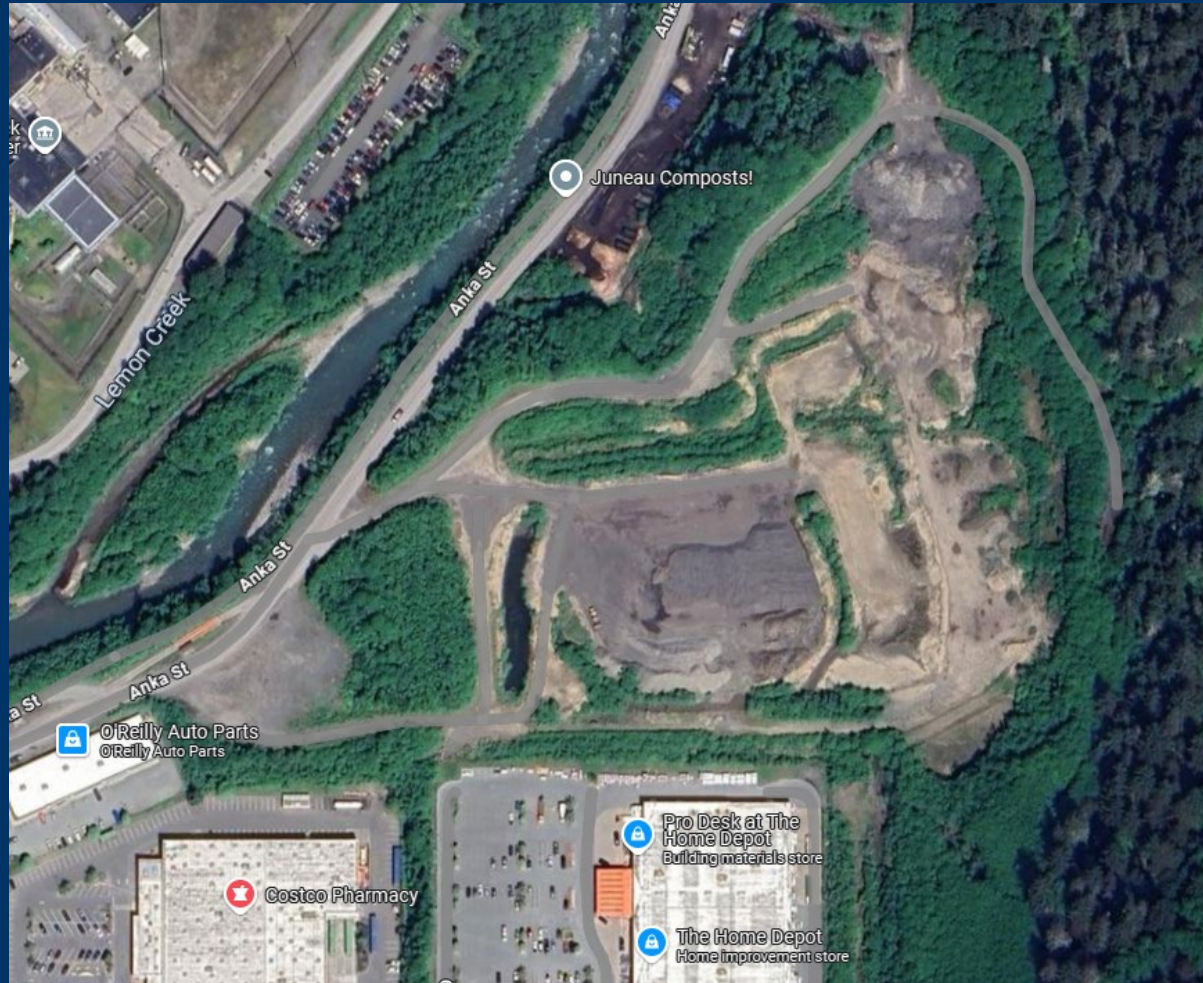


- LANDFILL
- WASTE-TO-ENERGY
- SHIPPING WASTE SOUTH

COMPOSTING

**IN FY23 CBJ
RECEIVED \$2.5
MILLION IN
CONGRESSIONALLY
DIRECTED SPENDING
FROM SENATOR
MURKOWSKI TO
DESIGN & CONSTRUCT
A MUNICIPAL
COMPOSTING
FACILITY**

- Environmental Review completed in April 2024
- PWFC voted to issue an RFP for future composting services vs. leasing the future facility in July 2024
- CBJ formally awarded & accepted the funding from EPA in late 2024
- Anticipated start early spring 2025
- Process will include future use planning for the rest of the Zero Waste Campus (EPA & CBJ Funding)



ZERO WASTE CAMPUS

CITY AND BOROUGH OF JUNEAU
ALASKA'S CAPITAL CITY

Admin | Engineering | Public Works | JOOS | Contact Us

SOLID WASTE PLANNING | JUNEAU WASTE HISTORY

SOLID WASTE PLANNING

WE NEED TO TALK ABOUT OUR TRASH

If you live in Juneau, you've seen the landfill. Built in the 1960's, the Capital Disposal Landfill (formally the Channel Landfill) has been a growing presence in Juneau ever since. It's difficult to know when the landfill will close, but the best estimate is in 10-15 years.

What will the community do with its trash after the landfill closes?

JUNEAU SOLID WASTE IOI

JUNEAU WASTE 101

NEWS & EVENTS

- April 18, 2024 "How well does Juneau recycle, and where does it all end up?" by Adelyn Baxter, KTOO
- RECORDING: March 7, 2024, 6:30 PM: JOOS Sustainability Session: Solid Waste Q&A Session
- February 5, 2024 Juneau Empire: Landfill fees rising 9% for residential trash, nearly tripling for metal, starting March
- Guidance for Alaska Waste's Curbside Recycling Program

MAILING LIST

SOLID WASTE PLANNING & ACTION STATUSES

- Municipal Composting Facility:** CBJ is in the process of working with the US EPA to receive the funding for the municipal composting facility. The Public Works and Facilities Committee (PWFC) will be considering procurement models for the operation of the future facility at their July or August meeting.
- Municipal Composting Facility Procurement:** The Public Works and Facilities Committee (PWFC) made a decision at their [July 18, 2024 meeting](#) to do a Request for Proposal (RFP) process to acquire an operator for the future composting facility.
- Waste Characterization Study:** Cascadia Consulting performed the waste characterization study in May 2024. A draft report is expected by the end of June 2024.
- Solid Waste Disposal Options Study:** Jacobs Engineering Group has been awarded the contract for this study. The anticipated completion date is December 2024.
- Municipal Composting Facility - Construction Phase**
- Municipal Composting Facility - Design Phase**

DOCUMENTS & LINKS

- July 15, 2024 Public Works and Facilities Committee Meeting - Composting Facility Request, Questions and Answers

FAQ

- + What is the CBJ doing about the landfill?



THANK YOU!



CITY AND BOROUGH OF JUNEAU
ALASKA'S CAPITAL CITY

ENGINEERING AND PUBLIC WORKS | Engineering | Public Works | JOOS | Contact Us

SOLID WASTE PLANNING | JUNEAU WASTE HISTORY

JUNEAU'S WASTE HISTORY

FOLLOW JUNEAU'S SOLID WASTE JOURNEY

Beginning with the opening of the current landfill in the 1960s, this timeline shows the major events and changes in Juneau's solid waste history. Hopefully you find this resource valuable in understanding how Juneau got to its current solid waste situation.

Juneau's Solid Waste History

Follow the journey of waste management in the Juneau community.

City & Borough of Juneau, Alaska
January 10, 2024

Engineering & Public Works
100 Heritage Way
Juneau, Alaska 99901
Telephone: 907-586-5254

© 2001-2024 City and Borough of Juneau