

**Proposal to be heard by the CBJ Planning
Commission:**

St. Ann's Avenue, Zoned D18

INVITATION TO COMMENT

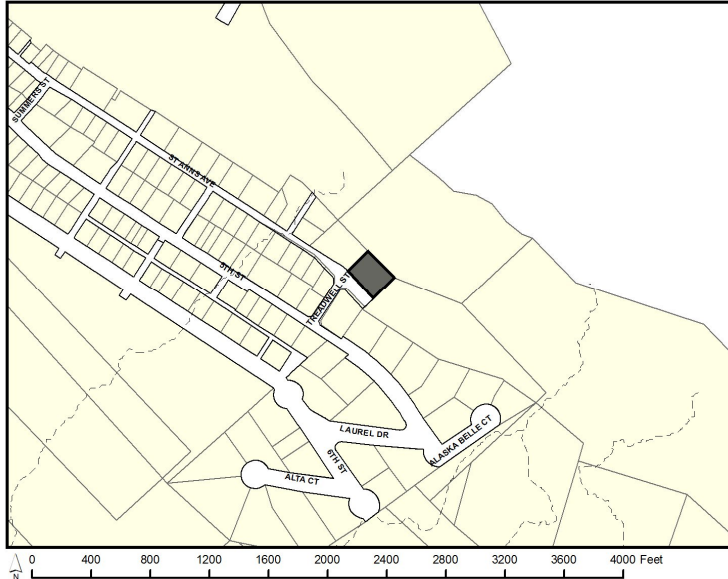


COMMUNITY DEVELOPMENT

155 S. Seward Street Juneau, Alaska 99801

Address Changing to 155 Heritage Way. Effective: November 1, 2023.

TO



Conditional Use permit for up to 4,000 square feet for a culture and learning center, focusing on language and traditional food, with up to 1,000 square feet covered outdoor area. **THEN:**

Variance to allow nine (9) off-street backout parking spaces.

-OR-

Parking Waiver to reduce required off-street parking from six (6) spaces to five (5).

PROJECT INFORMATION:

Project Information can be found at:

<https://juneau.org/community-development/short-term-projects>

PLANNING COMMISSION DOCUMENTS:

Staff Report expected to be posted **November 6th, 2023** at

<https://juneau.org/community-development/planning-commission>

Find hearing results, meeting minutes, and more here, as well.

Now through Oct. 23rd

Comments received during this period will be sent to the Planner, **Irene Gallion** to be included as an attachment in the staff report.

Oct. 24th— noon, Nov. 10th

Comments received during this period will be sent to Commissioners to read in preparation for the hearing.

HEARING DATE & TIME: 7:00 pm, Nov. 14th, 2023

This meeting will be held in person and by remote participation. For remote participation: join the Webinar by visiting <https://juneau.zoom.us/j/84239335411> and use the Webinar ID: 842 3933 5411 OR join by telephone, calling: 1-253-215-8782 and enter the Webinar ID (above).

You may also participate in person in City Hall Assembly Chambers, 155 S. Seward Street, Juneau, Alaska.

Nov. 15th

The results of the hearing will be posted online.

FOR DETAILS OR QUESTIONS,

Phone: (907)586-0753 ext. 4130

Email: pc_comments@juneau.gov or Irene.Gallion@juneau.gov

Mail: Community Development, 155 S. Seward Street, Juneau AK 99801

Address Changing to 155 Heritage Way. Effective: November 1, 2023.

Printed October 2, 2023

Case No.: USE23-13; VAR23-02; PWP23-03

Parcel No.: 2D040T480011

CBJ Parcel Viewer: <http://epv.juneau.org>