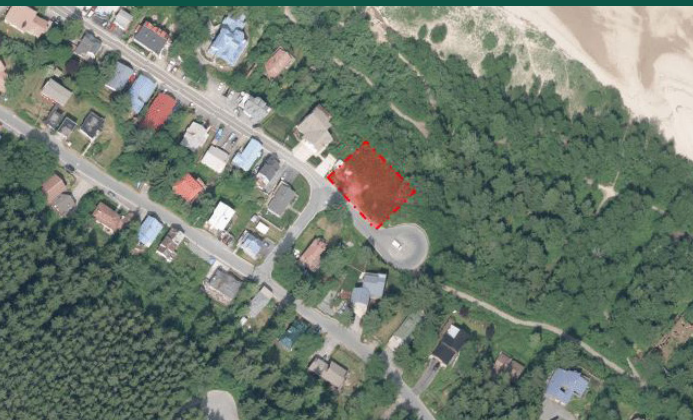


## Site: End of St Ann's Ave, Douglas



The Douglas Indian Association is very pleased to introduce the new learning center **Anax Yaa Andagan Yé Daakahídi** “Where the Sun Rays Touch First”, not far from the site of the village destroyed for development in the 1960's. The spirit of this learning center in this place is one of reparation and healing. It is also a significant investment in revitalizing a historic site.

Synchronicity exists: In the historic and current cultural context of people here time immemorial. In the building placement and orientation in the land and environment. In a commitment to our collective sustainable future.

This is not a historic replication of a past era. **Anax Yaa Andagan Yé Daakahídi** is a modern building constructed with commitment to our present. It is comprised of a high performance building envelope structure and systems, and healthy interior materials. It draws its heating and cooling energy from the atmosphere and earth. It provides both bright and engaging indoor and outdoor learning space. Its mission is to support its users and surrounding community in much the way the Douglas Indian Association commits to supporting its culture and membership.

## DIA Office Building



The Douglas Indian Association and Tribal Government is dedicated to providing high quality work and learning spaces facilities that are built to quietly inspire future generations. Our recently completed Tribal Headquarters building at 1021 Glacier Avenue is a great example of being a good neighbor on the edge of a residential neighborhood.



**Completed 2022**



**Tribal Government**

907-364-2916

## Anax Yaa Andagan Yé Daakahídi Learning Center

“Where the Sun Rays Touch First”

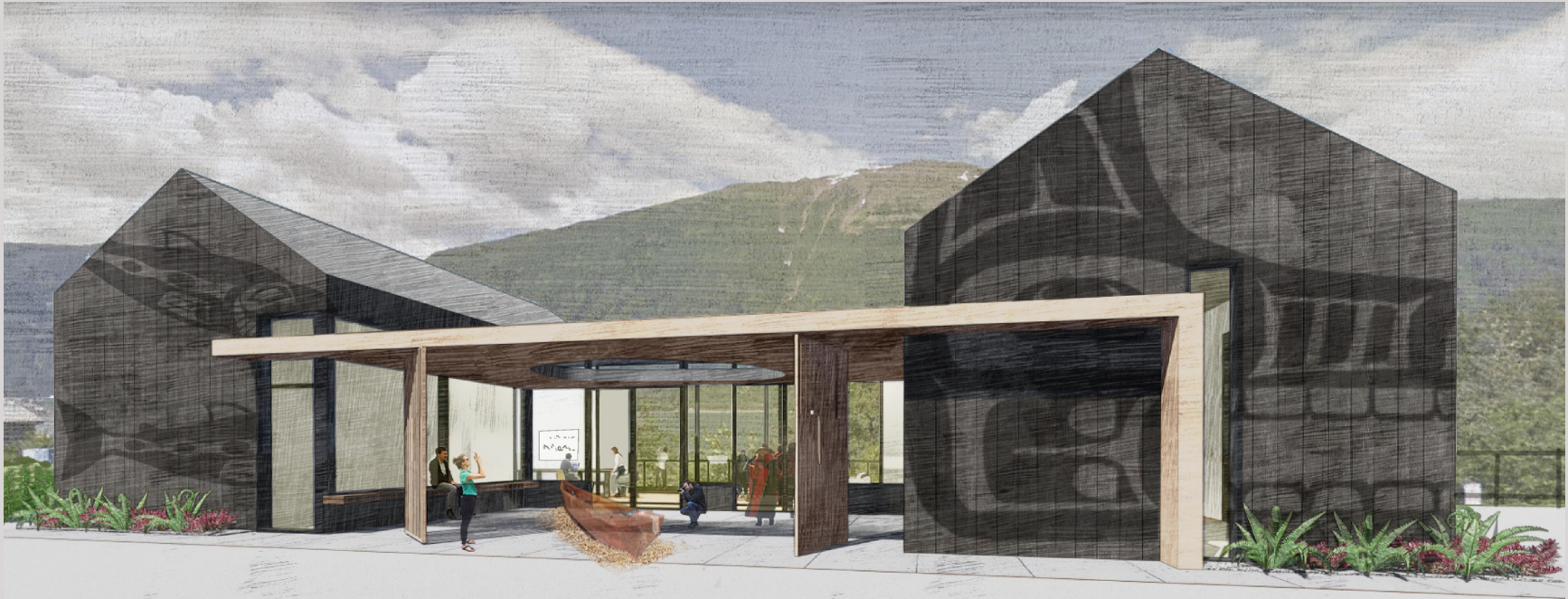


The Douglas Indian Association is planning to construct a small education center overlooking Treadwell Park and Gastineau Channel on the south end of St. Ann's Avenue. This facility will be dedicated primary to the preservation of the Tlingit language, food sovereignty, living crafts and will host local and visiting educators in small scale classroom settings. This publication has been developed to share our vision and the proposed design addition to the Douglas neighborhood.

**Douglas Indian  
Association and  
Tribal Government**



# Anax Yaa Andagan Yé Daakahídi Learning Center



Street view from St. Ann's

Our language focused learning facility will quietly anchor the south end of St' Ann's Avenue and reflect the identity and values of the Douglas Indian Association tribal government and membership. It is a small building, less than 4000 sf on two levels (street level and daylight basement), similar in scale as the neighboring houses. It contains a classroom, a teaching kitchen, a learning lounge, a computer library with audio/video archive, a number of visiting educator studio offices, and a reception area.

The site will be landscaped with both natural vegetated and hard scape areas. Outdoor spaces include a protected activity courtyard that faces the south-west to take advantage of afternoon sun over the mountains, and is protected from the fierce Taku winds from the northeast. A fenced wet side yard supports the kitchen. The private lower terrace at the tree level over Treadwell Park captures Channel views provides a quiet separation from the street. An entry-level plaza area to the south affords a place for occasional small outdoor gatherings.

Traffic at the Cul-De-Sac end of St' Ans avenue is slow. The parking demand at this facility will be light. Parking spaces will be provided on site for teachers and building staff. Most students and elders/educators will be dropped off/and picked up by DIA's tribal transportation program.

The design incorporates a geothermal heat pump well field under the parking lot and plaza. This strategy affords the greatest energy efficiency and the least noise, with no exposed fan equipment.



Courtyard classroom

Building design and renderings by  
NorthWind Architects, LLC, Juneau