

**ATTACHMENT #1**

**36" Culverts**

**CULVERT OUTFALLS  
TO RECEIVE CHECK  
VALVES IN JUNE 2025**

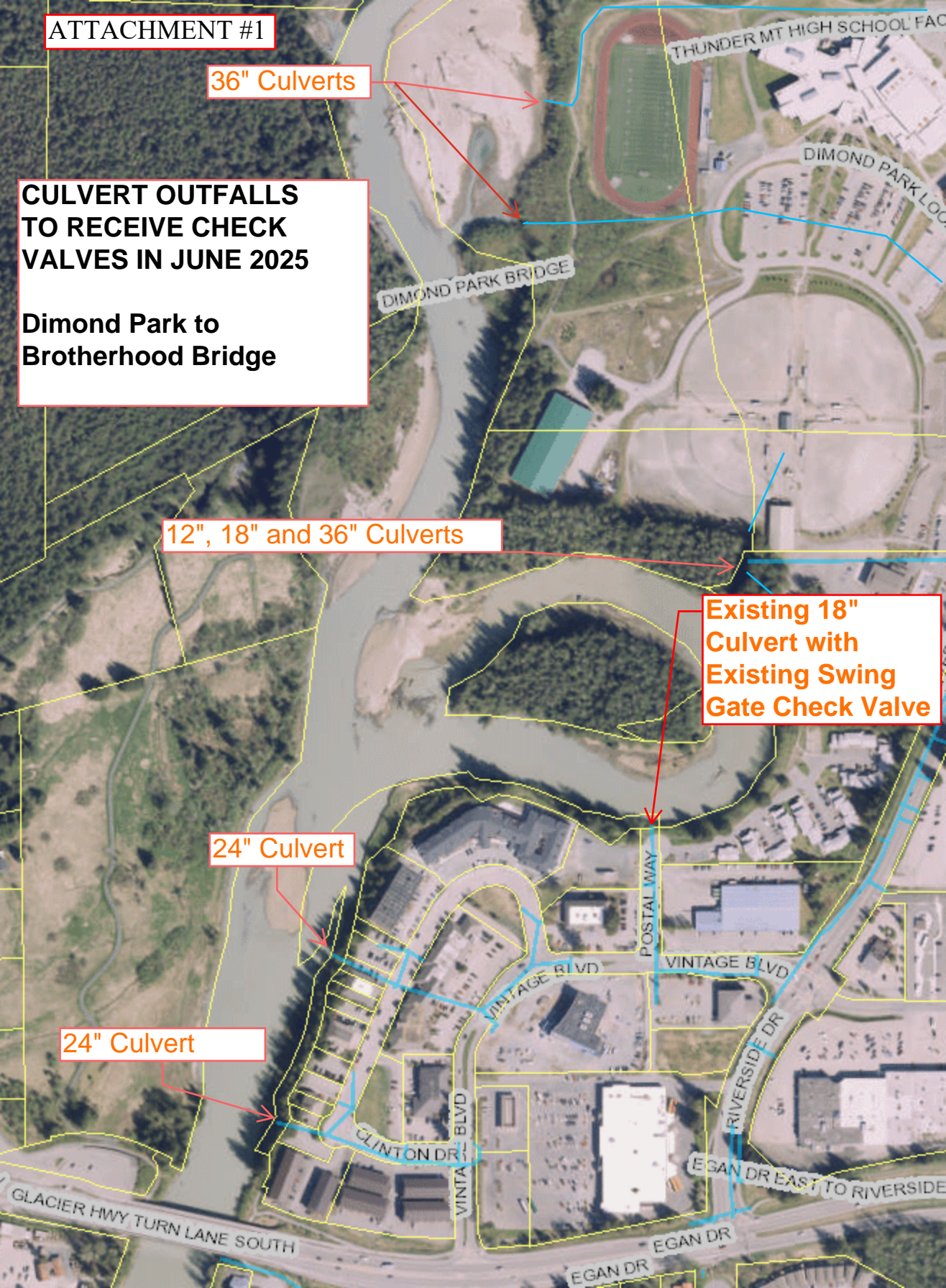
**Dimond Park to  
Brotherhood Bridge**

**12", 18" and 36" Culverts**

**Existing 18"  
Culvert with  
Existing Swing  
Gate Check Valve**

**24" Culvert**

**24" Culvert**





**CULVERT OUTFALLS  
REQUIRING PLUGS  
JUNE 2025**

**Back Loop Road**

**Culvert End  
requires plug  
before GLOF**

**Culvert End  
requires plug  
before GLOF**

