

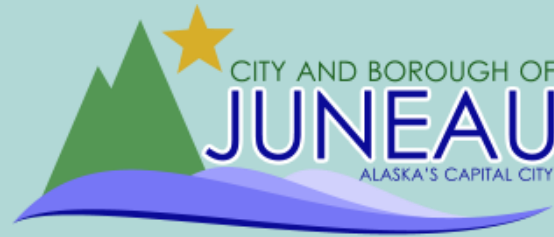
# CBJ ASSEMBLY PUBLIC WORKS & FACILITIES COMMITTEE

PEL Study and Public Involvement Update

March 2, 2023

The environmental review, consultation, and other actions required by applicable federal environmental laws for this project are being, or have been, carried out by DOT&PF pursuant to 23 U.S.C. 327 and a Memorandum of Understanding dated November 3, 2017, and executed by FHWA and DOT&PF.

# PROJECT TEAM



**Marie Heidemann**  
Project Manager/Planner

**Christy Gentemann**  
Environmental Analyst

**Greg Lockwood**  
Design Group Chief

**Alec Venechuk**  
Project Manager

**Irene Gallion**  
Senior Planner

**Steve Noble, PE**  
Project Manager

**Renee Whitesell, PTP**  
PEL Study Lead

**Nina Keller**  
Transportation and Environmental Planner

# SCHEDULE

SPRING 2022

SUMMER / FALL 2022

WINTER / SPRING 2022 / 2023

SUMMER 2023



Project Initiation, Problems to be Solved, Purpose & Need: Emerging Themes



Evaluation Criteria, Develop & Screen Alternatives



Evaluate, Refine, & Select Alternatives



Finalize Documentation

Baseline Analysis, Data Collection, Purpose & Need: Emerging Themes

Identify Crossing Alternatives and Develop Screening Criteria

Screening, Recommended Alternatives, Draft PEL Study

Public Comment Period (30 days) and Finalize PEL Study



# PURPOSE & NEED STATEMENT



## PURPOSE

The **purpose** of the Juneau Douglas North Crossing PEL Study is to identify ways to improve the connection between Douglas Island and Juneau.

The secondary purposes are to identify ways to improve transportation for non-motorized users and reduce transportation related energy consumption.



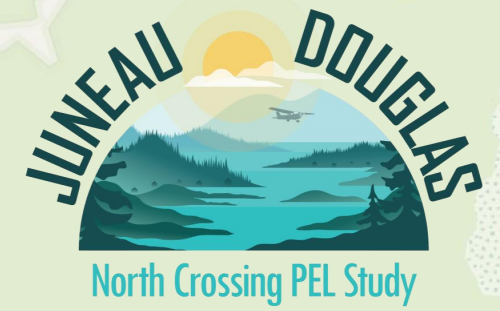
## NEED

*An improved connection to Douglas Island should address the following **needs**:*

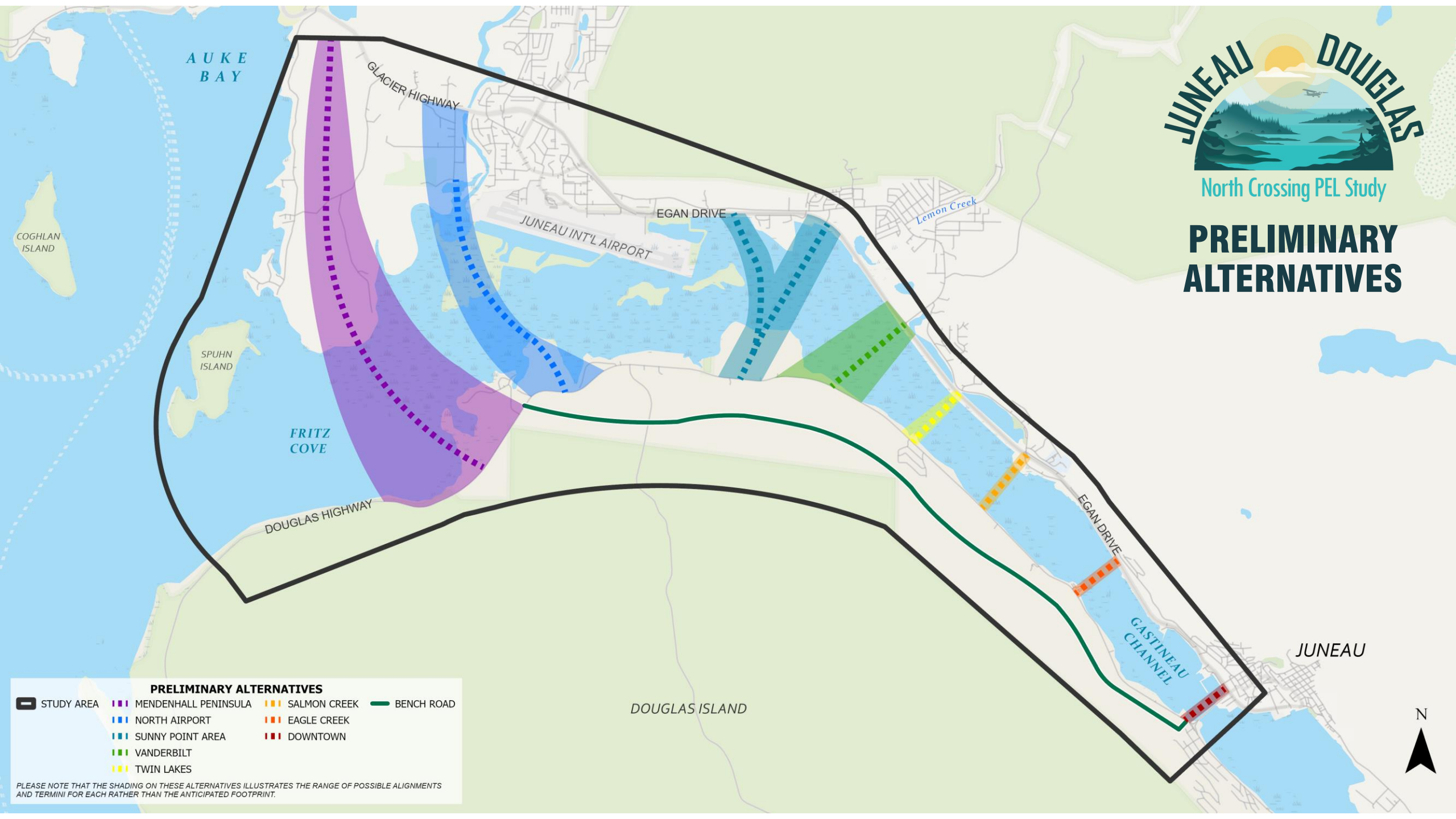
- **Alternate access and transportation infrastructure resiliency**
- **Decrease traffic pressure on Douglas Island Bridge and its intersections**

*The identified alternative(s) should also strive to meet these **additional goals**:*

- Improve connection to North and West Douglas Island by creating additional traffic capacity to support the future development of affordable housing and economic development opportunities.
- Enhance and protect public health and safety and safety of travelers and the communities that transportation facilities traverse and serve.
- Transportation improvements should avoid, minimize, and mitigate impacts to the environment and to residential areas.
- Transportation improvements should maintain the visual, cultural, and scenic identity of Juneau and Douglas Island.



# PRELIMINARY ALTERNATIVES



- PRELIMINARY ALTERNATIVES**
- STUDY AREA
  - MENDENHALL PENINSULA
  - NORTH AIRPORT
  - SUNNY POINT AREA
  - VANDERBILT
  - TWIN LAKES
  - SALMON CREEK
  - EAGLE CREEK
  - DOWNTOWN
  - BENCH ROAD

PLEASE NOTE THAT THE SHADING ON THESE ALTERNATIVES ILLUSTRATES THE RANGE OF POSSIBLE ALIGNMENTS AND TERMINI FOR EACH RATHER THAN THE ANTICIPATED FOOTPRINT.



# PUBLIC INVOLVEMENT UPDATE

- Technical and Stakeholder Advisory Committees:  
4 Meetings (as noted on the schedule)
- Stakeholder/Agency Alternatives Workshop – July 19, 2022
- **PUBLIC MEETINGS:**
  - Virtual Public Open House 1: May 11, 2022
  - Listening Sessions at Eaglecrest and Safeway: September 17, 2022
  - In-Person Public Open House 2: December 12, 2022
  - In-Person Public Open House 3: Summer 2023
- Over 200 verbal and written comments received (email, phone, and handwritten) – not including the online survey
- 1,012 survey responses following Public Open House 2



# PUBLIC INVOLVEMENT UPDATE

## SMALL GROUPS MEETINGS

- North Douglas Neighborhood Association
- Bonnie Brae Neighborhood Association
- Juneau Chamber of Commerce
- Mendenhall Wetlands Study Group
- Juneau Audubon Society
- Juneau 58° Innovators Rotary Club
- State and Local Representatives
- Residents

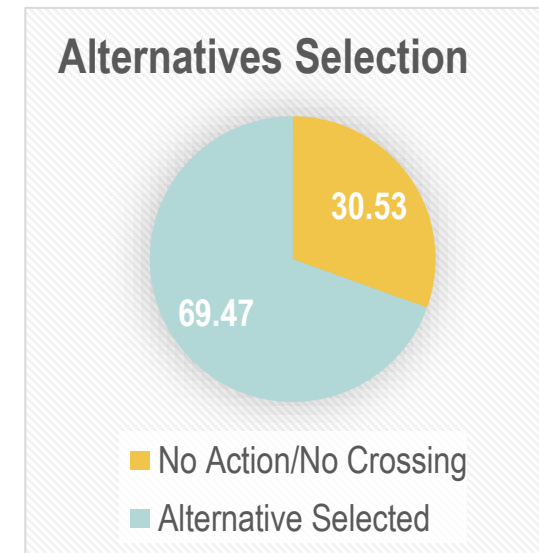
## AGENCY MEETINGS

- USFWS
- EPA
- NOAA Fisheries
- ADF&G
- USACE
- DNR OHA
- USFS



# SURVEY RESULTS & SUMMARY

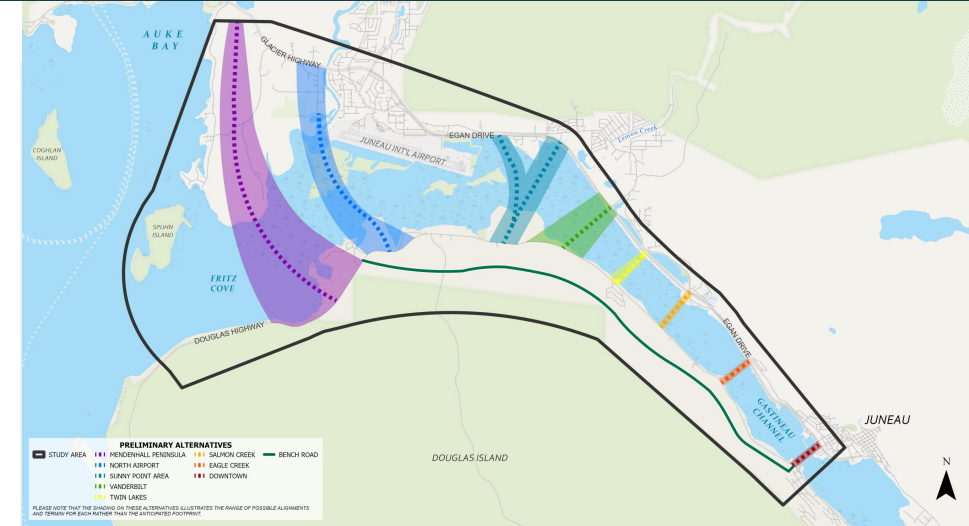
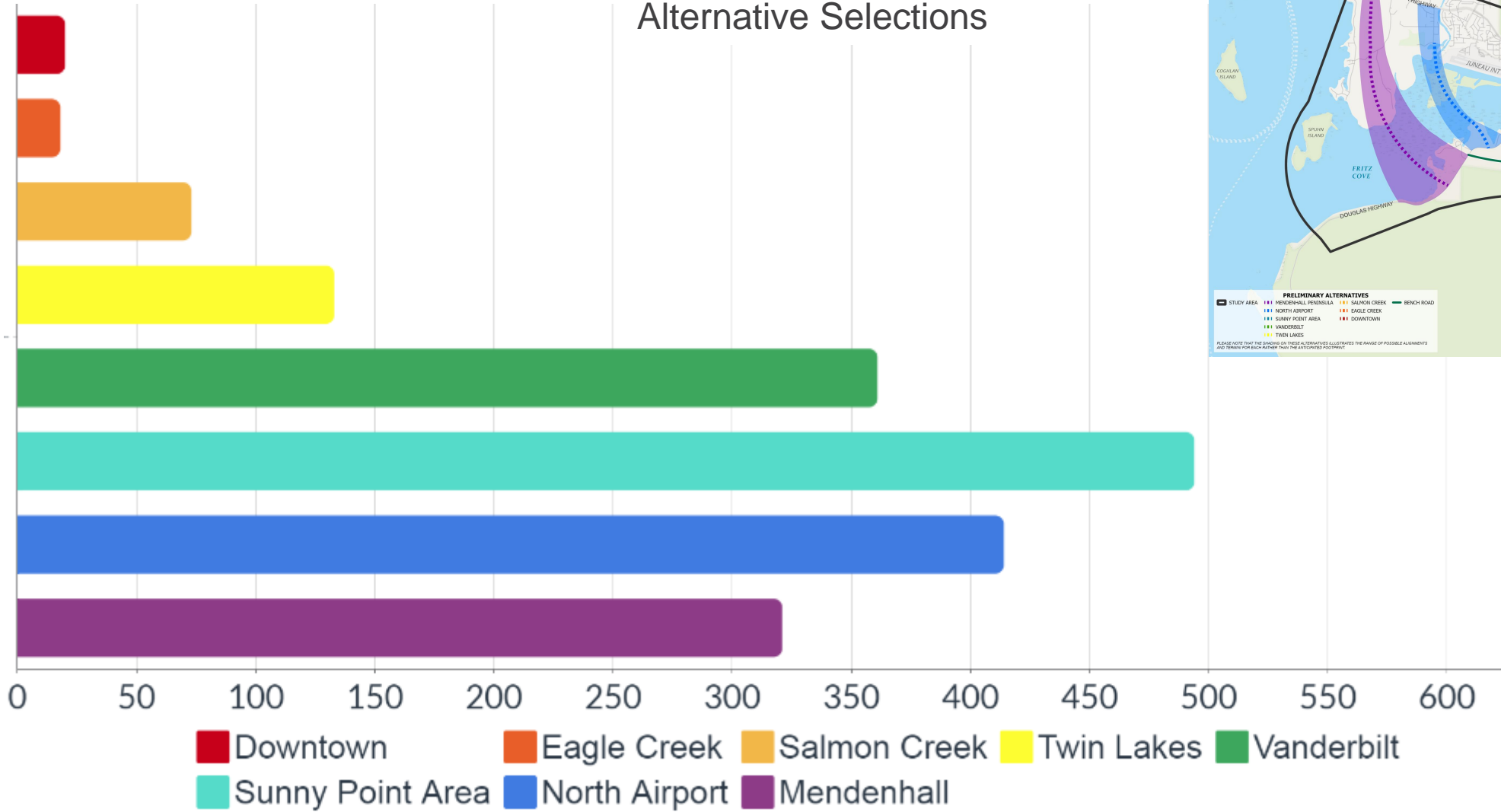
- Survey asked six questions, providing space for additional comments
- Received 1,012 responses to the online survey
- Received 141 emails, phone calls, and in person comments during the comment period
- Nearly half of respondents shared where they live, most who answered live in the City and Borough of Juneau
- More than two thirds supported a north crossing at some location
- More likely to support a north crossing that:
  - Creates alternative access
  - Reduces travel time and congestion
  - Improves emergency response time
  - Improves access to recreation opportunities
  - Minimizes environmental impacts
  - Minimizes disruptions to existing neighborhoods and residents
  - Reduces increased or generated traffic on Douglas Island
  - Provides reasonable construction and maintenance costs





# SURVEY RESULTS – CHOSEN CROSSING LOCATIONS

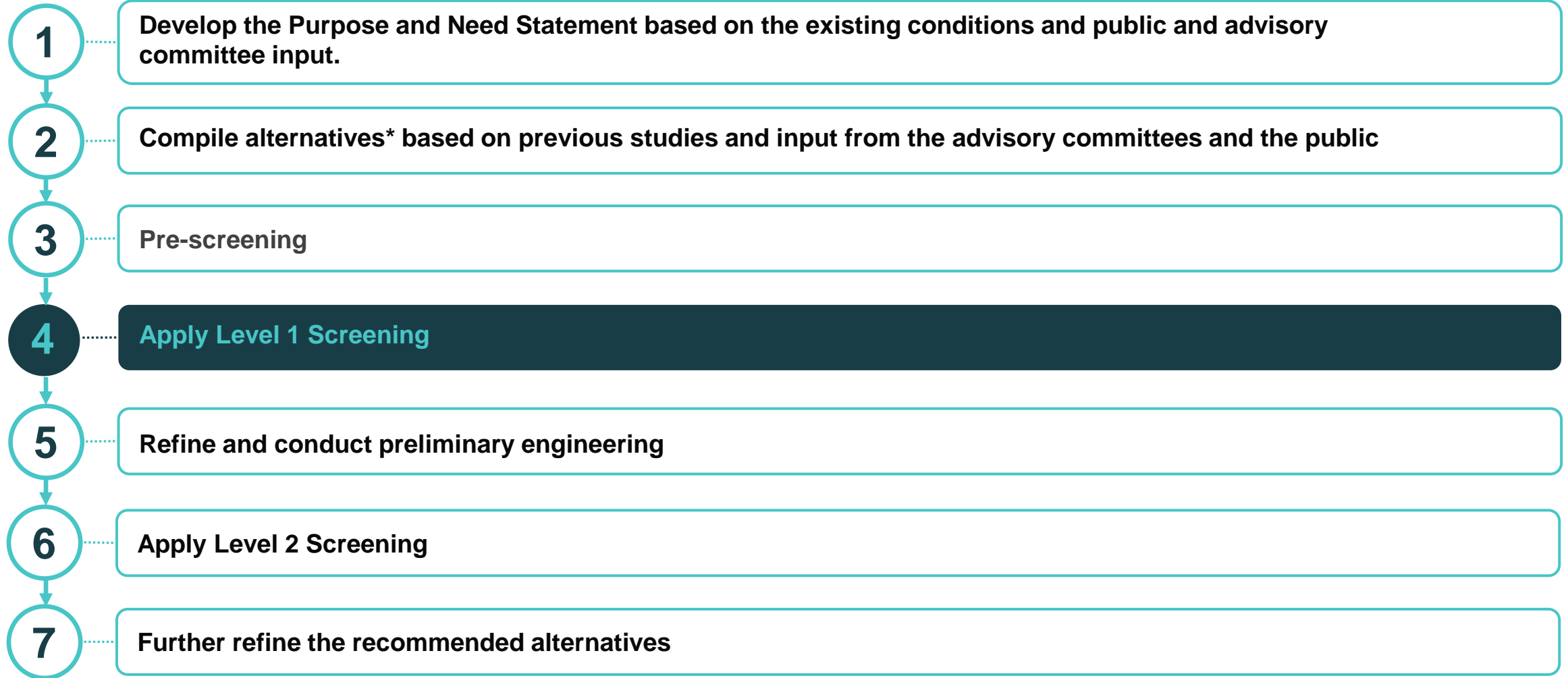
Alternative Selections



**LEVEL 1**

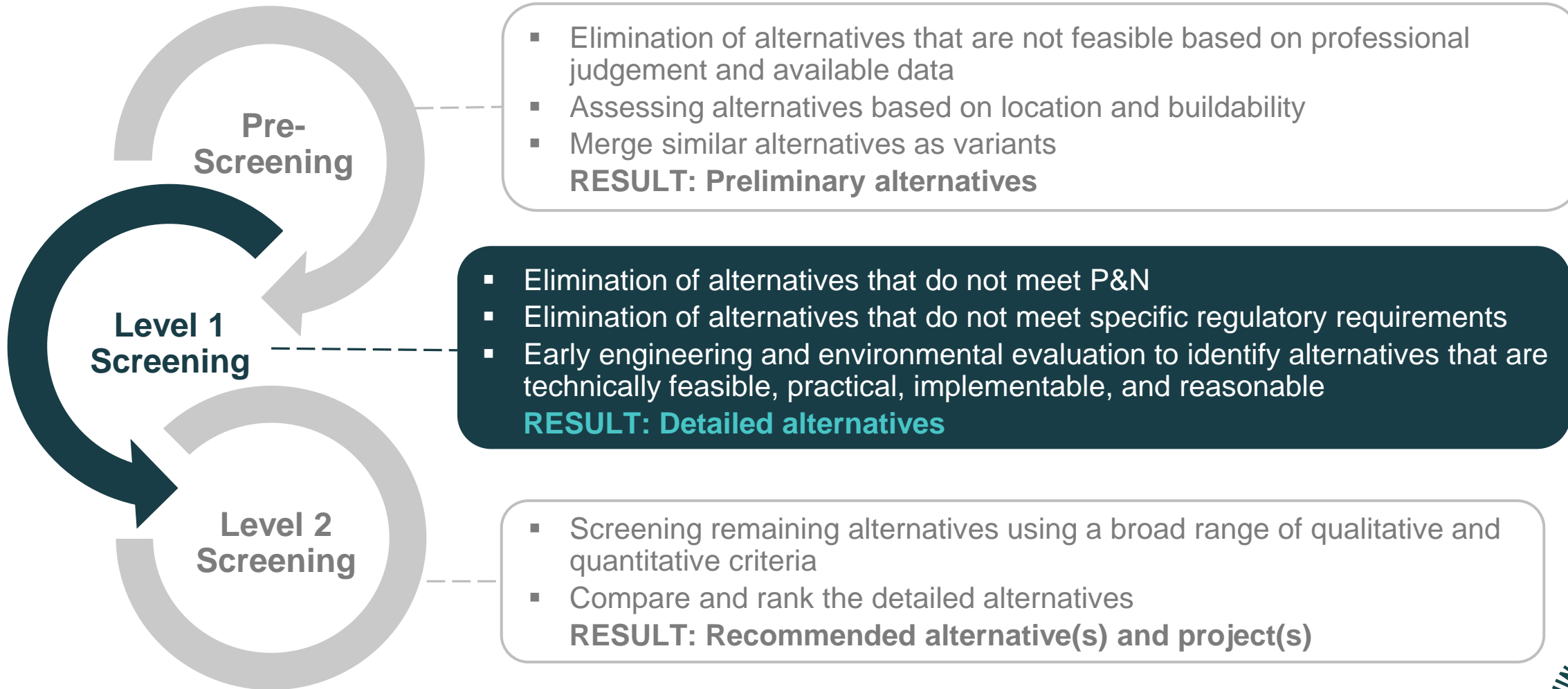
**SCREENING UPDATE**

# ALTERNATIVE DEVELOPMENT & SCREENING PROCESS



*\*a “no build” alternative is carried forward through the screening process*

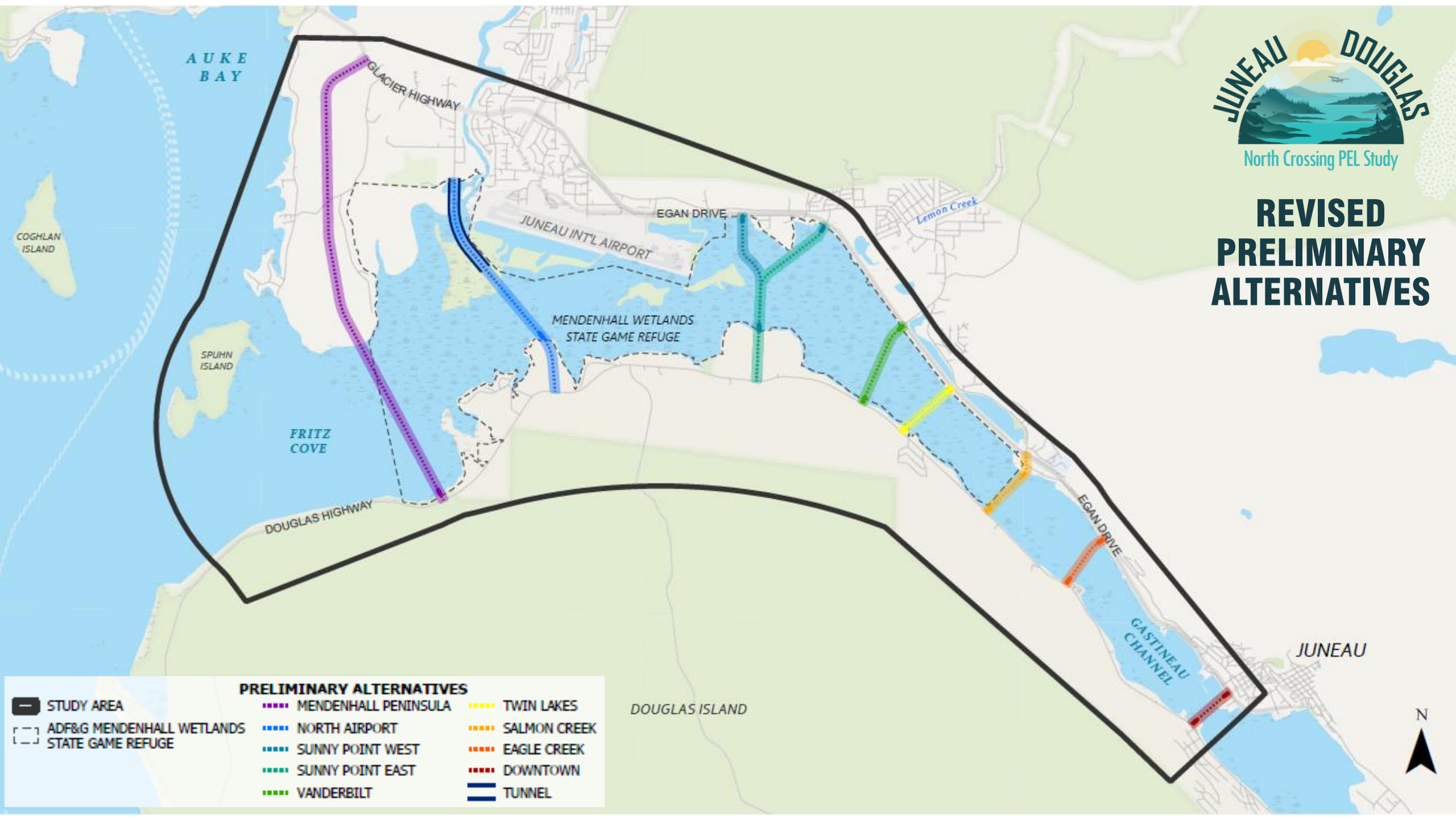
# ALTERNATIVE SCREENING OVERVIEW – LEVEL 1





North Crossing PEL Study

# REVISED PRELIMINARY ALTERNATIVES



# WHAT'S NEXT?

| Public Meeting #          | Focus  | When        |
|---------------------------|--|-------------|
| 1                         | <ul style="list-style-type: none"><li>▪ Baseline data and existing conditions</li><li>▪ Purpose and need</li></ul>   | Spring 2022 |
| <b>Listening Sessions</b> | <ul style="list-style-type: none"><li>▪ Range of alternatives</li><li>▪ Alternatives screening process</li></ul>   | Summer 2022 |
| 2                         | <ul style="list-style-type: none"><li>▪ Share preliminary alternatives</li><li>▪ Share screening methodology</li></ul>   | Winter 2022 |
| 3                         | <ul style="list-style-type: none"><li>▪ Alternative screening results</li><li>▪ Recommended alternatives</li><li>▪ Draft PEL Study</li><li>▪ Final Public Open House</li></ul> | Summer 2023 |

# AFTER THE PEL STUDY WRAPS UP

## PEL Study

Complete in Fall 2023

### Funding Allocated

Funding now programmed to advance through Preliminary Engineering and NEPA

### Engineering Design

Approx. 2 Years (TBD)

### Construction

Likely phased over several years

### Preliminary Engineering and NEPA

2024-2026 (Approx. 2 Years)

### ROW Acquisition

2 Years or more (TBD)

Dependent project scoring ranked against other nominated projects



## PROJECT CONTACTS:

Marie Heidemann, DOT&PF Project Manager  
(907) 465-4477

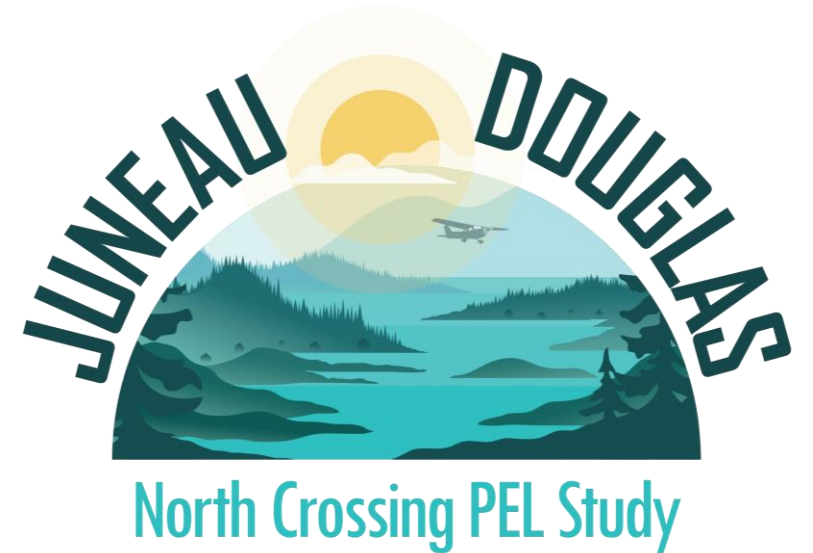
Steve Noble, DOWL Project Manager  
(907) 562-2000

**Email:**

[JDNorthCrossing@dowl.com](mailto:JDNorthCrossing@dowl.com)

**Website:**

[www.JDNorthCrossing.com](http://www.JDNorthCrossing.com)



# THANK YOU