



**Douglas Island Pink and Chum, Inc.**

2697 Channel Drive • Juneau, Alaska 99801

(907) 463-5114 • [www.dipac.net](http://www.dipac.net)

**Attn: Carl Uchtyl**

City & Borough of Juneau (CBJ)

Docks & Harbors

April 7, 2025

**RE: DIPAC Request to Relinquish ATS 1356 TRS - Tract B to CBJ Docks and Harbors.**

Port Director Carl Uchtyl,

Douglas Island Pink and Chum, Inc. (DIPAC) is a private non-profit salmon hatchery organization located in Juneau, Alaska. DIPAC owns and manages the Macaulay Salmon Hatchery which has a current tidelands lease with CBJ Docks & Harbors. As with all Juneau Businesses, DIPAC's costs have been rising, but unlike other Juneau businesses, DIPAC does not have control over the price of its commodities. The price per pound of salmon is set by global seafood market conditions and the price per pound of salmon is no longer covering DIPAC's annual costs of operations. DIPAC is currently seeking to cut costs where possible without changing production goals.

**DIPAC is requesting to relinquish Tract B from its current Tidelands lease as this section of property has not been used by the corporation since 2010. See photo on next page.**

Tract B historically was used for an "Urban Fishing Dock" owned and managed by DIPAC. This dock was installed in 1991 and remained in service until 2001 when the CBJ Wayside Park float dock was installed.

From 1994 until 2010 there was a fishing shack located near Tract B at the edge of the DIPAC parking area which may have had activity which crossed the boundary from Tract A to Tract B.

Since 2010, there has been no DIPAC sponsored activity on Tract B and we see no use for it in the future.

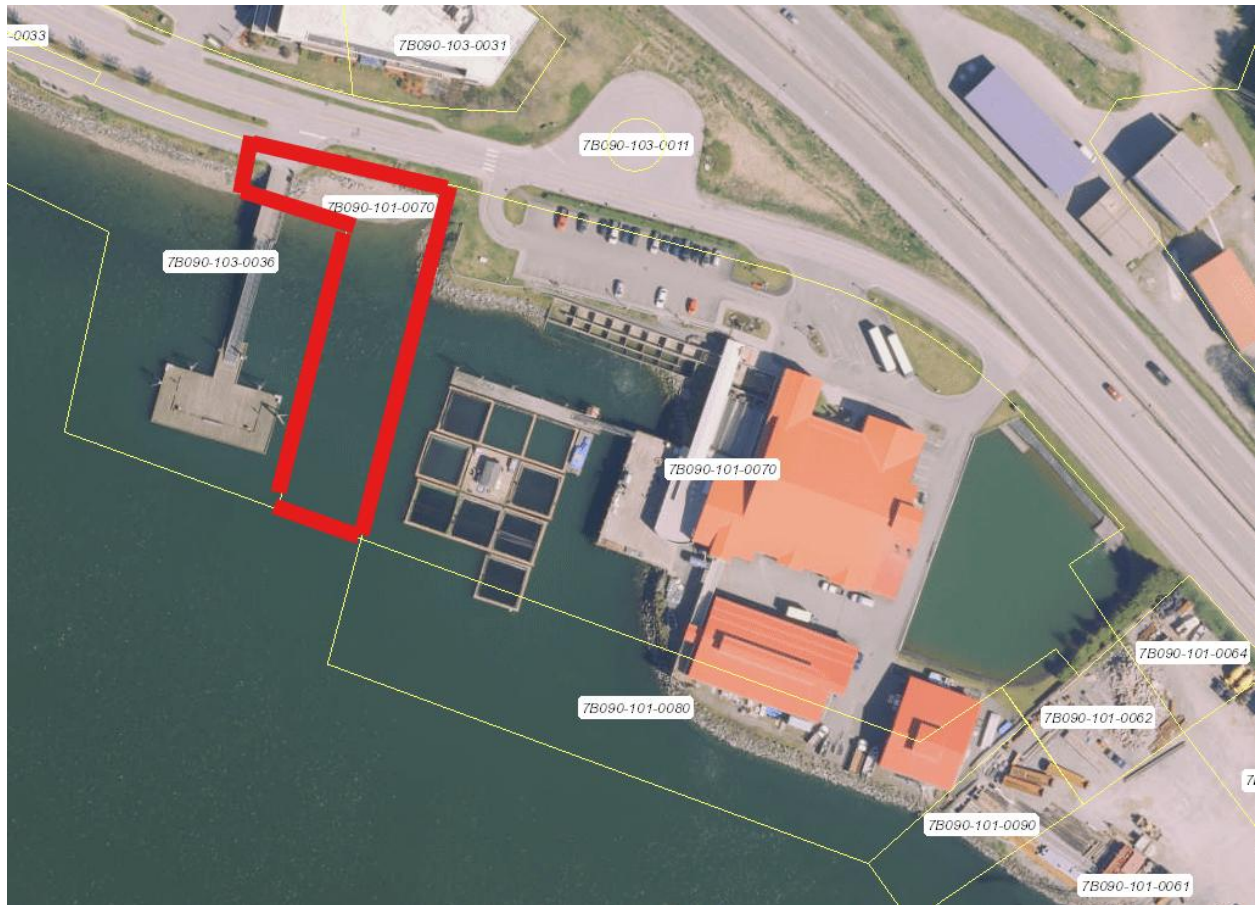
Please let us know if you need any more detailed information to process this request.

Thank you for your time and attention to this matter.

Sincerely,

Katie Harms

Executive Director – DIPAC



Tract B shown highlighted in red.