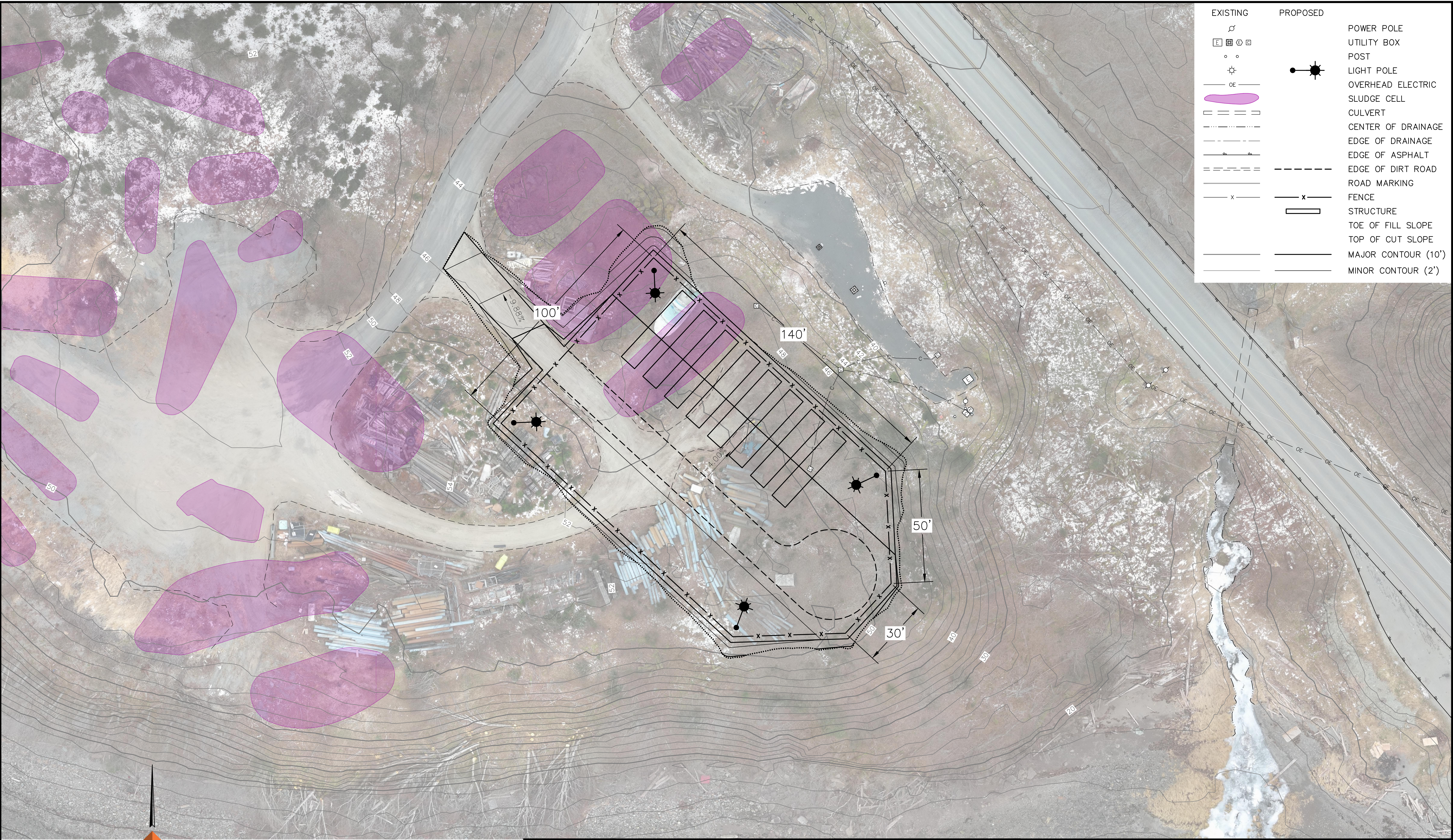
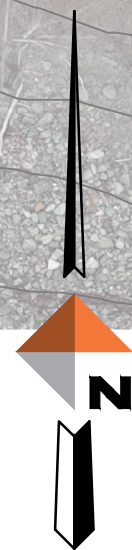


C:\dowl_pw\40419670\SA-CS-PP-80611.dwg PLOT DATE 2025-4-8 08:16 SAVED DATE 2025-04-07 16:49 USER: rlatavaur



EXISTING	PROPOSED	
		POWER POLE
		UTILITY BOX
		POST
		LIGHT POLE
		OVERHEAD ELECTRIC
		SLUDGE CELL
		CULVERT
		CENTER OF DRAINAGE
		EDGE OF DRAINAGE
		EDGE OF ASPHALT
		EDGE OF DIRT ROAD
		ROAD MARKING
		FENCE
		STRUCTURE
		TOE OF FILL SLOPE
		TOP OF CUT SLOPE
		MAJOR CONTOUR (10')
		MINOR CONTOUR (2')



REVISIONS			
REV	DATE	DESCRIPTION	BY

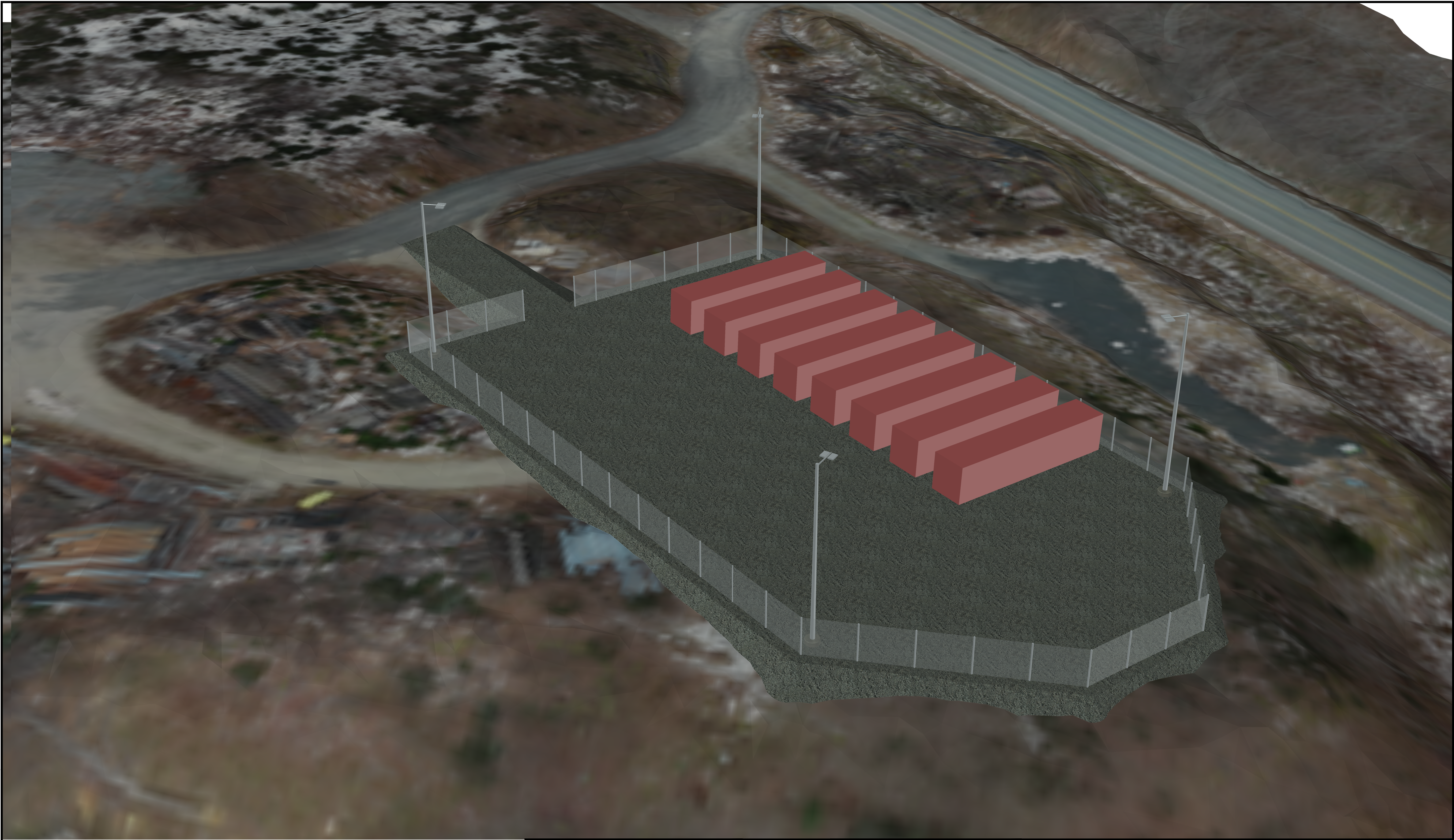


LITTLE ROCK DUMP STORAGE
JUNEAU, ALASKA

16,320 SF FACILITY
PLAN

PROJECT 2670.80611.02
DATE 4/7/25
SHEET
1 OF 3

C:\dowl_pw\90419670\SA-CS-EX-80611.dwg PLOT DATE 2025-4-8 09:00 SAVED DATE 2025-04-07 16:33 USER: r1efaveur



REVISIONS			
REV	DATE	DESCRIPTION	BY

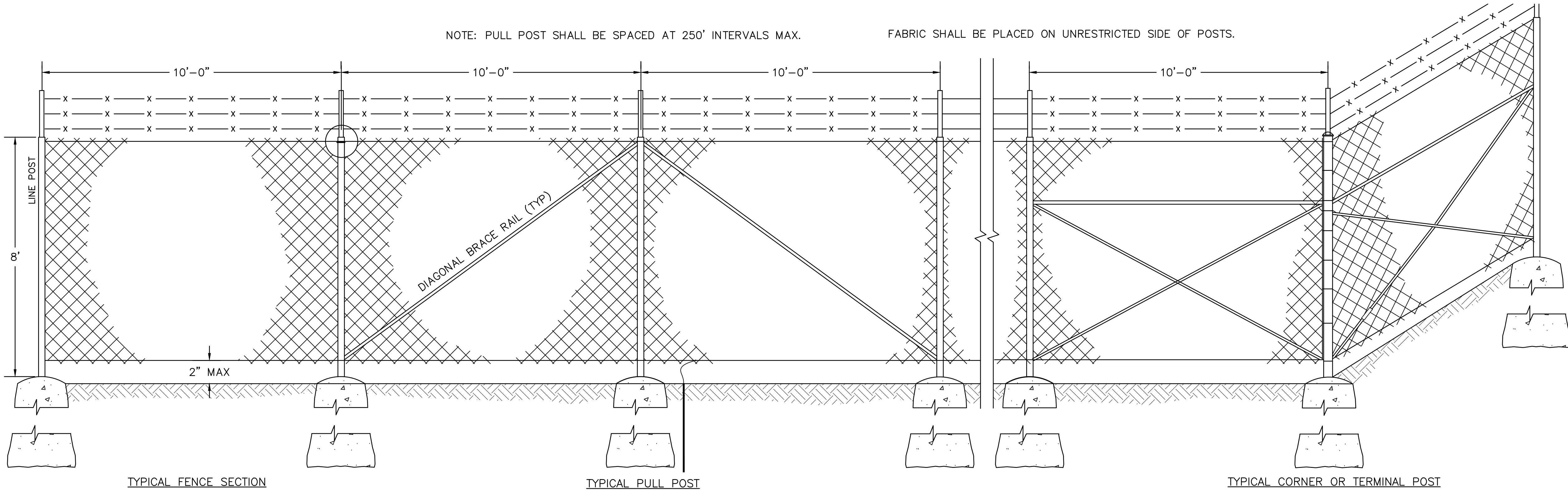


LITTLE ROCK DUMP STORAGE
JUNEAU, ALASKA

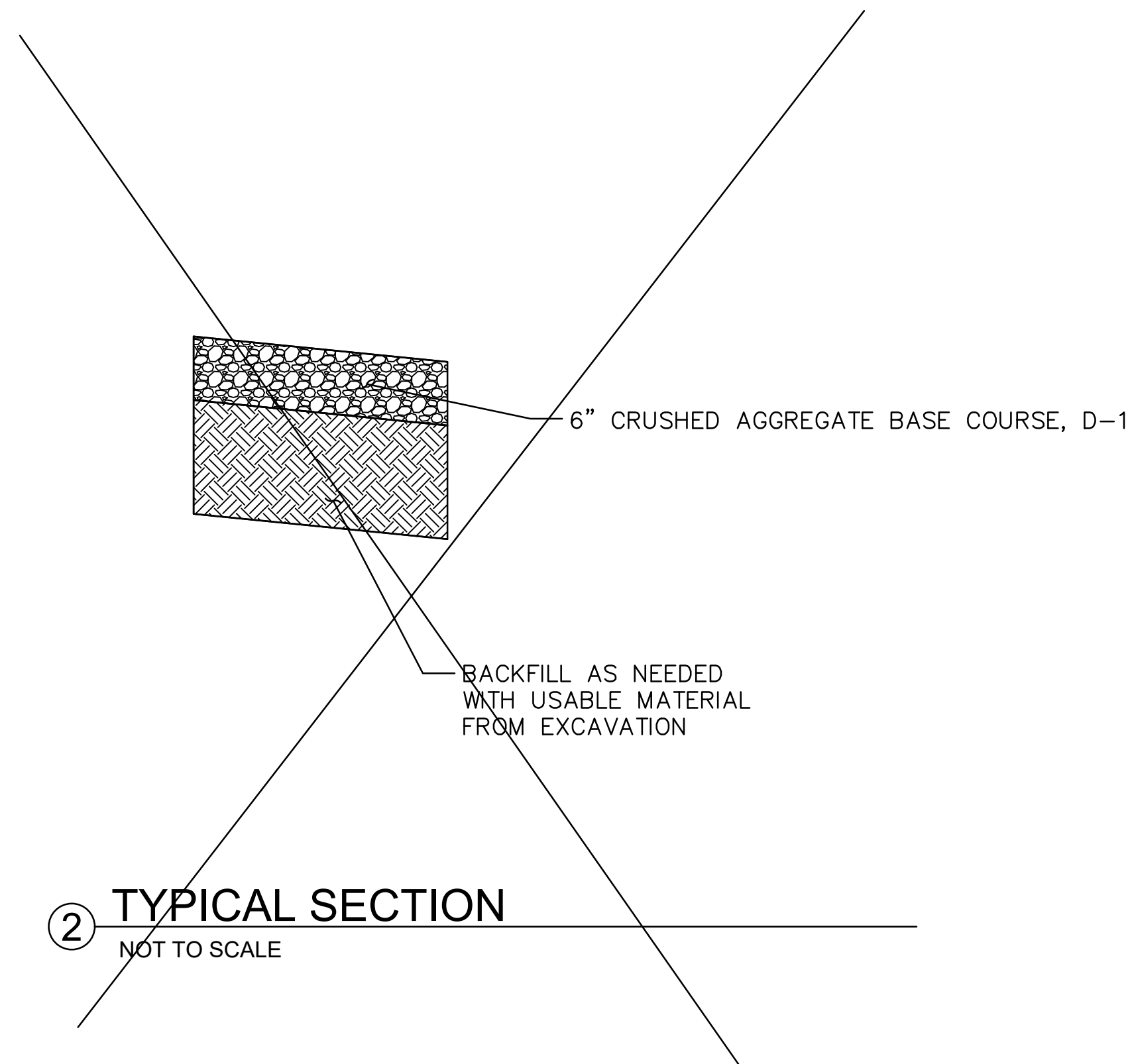
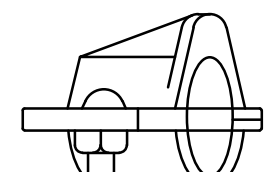
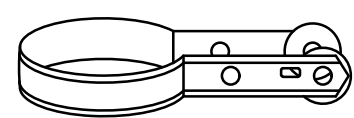
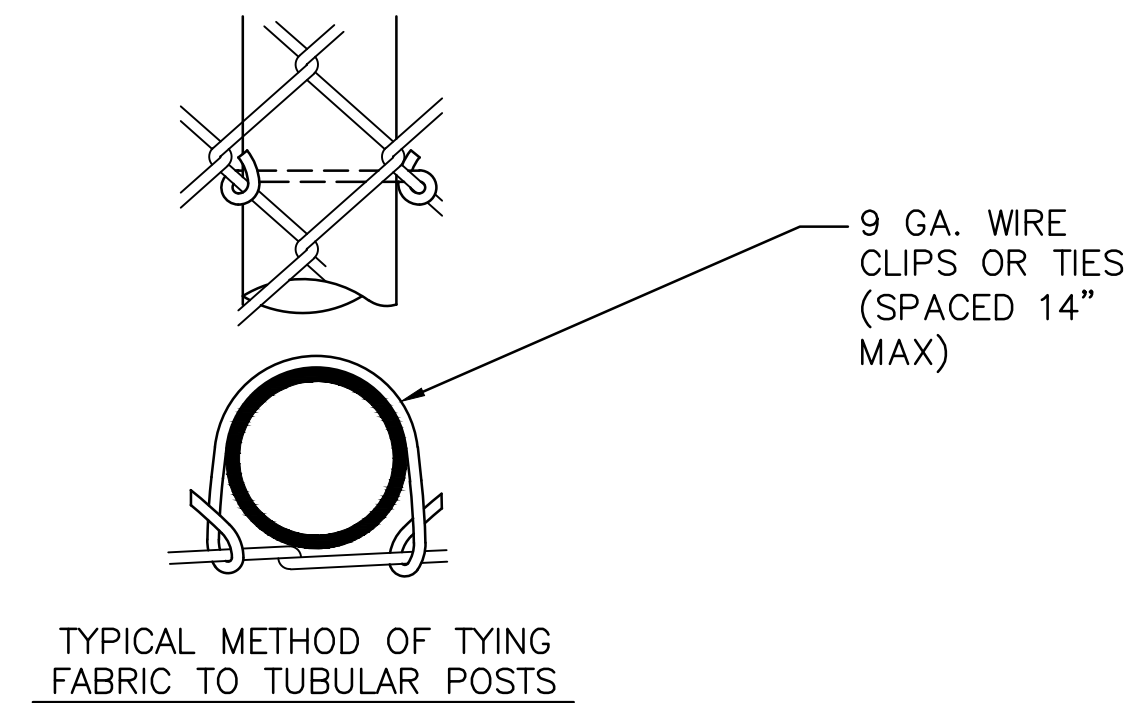
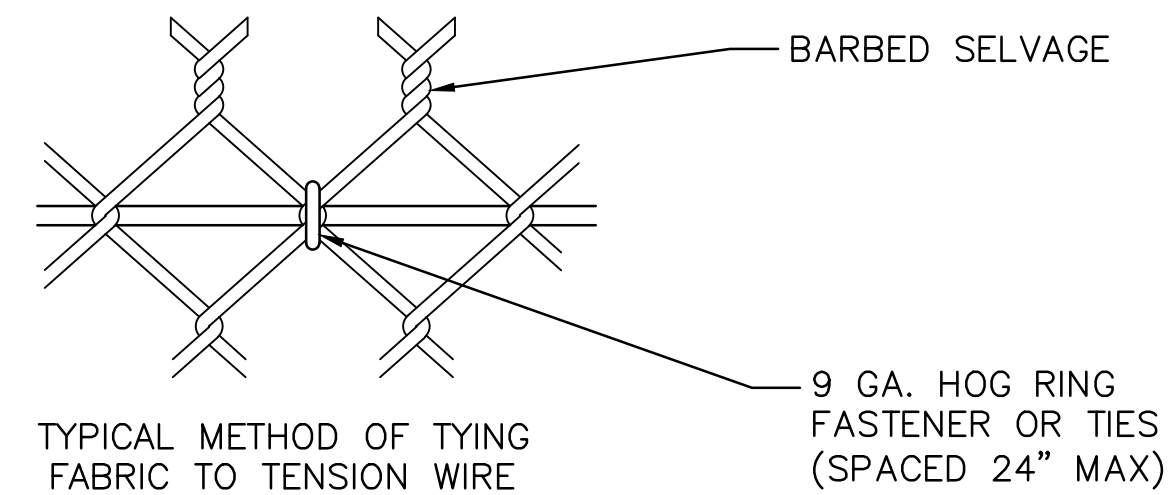
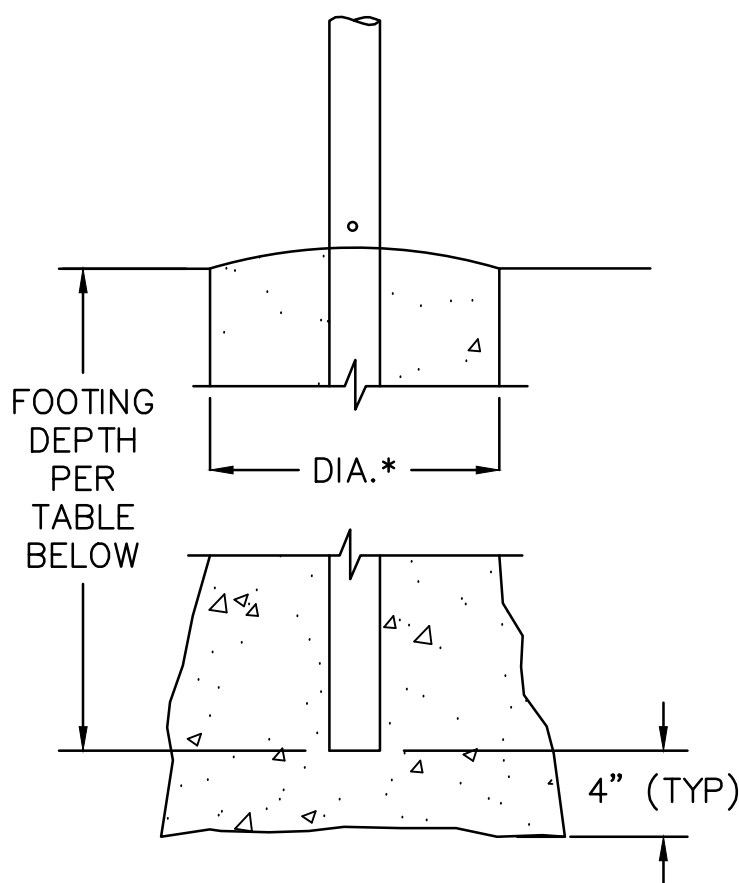
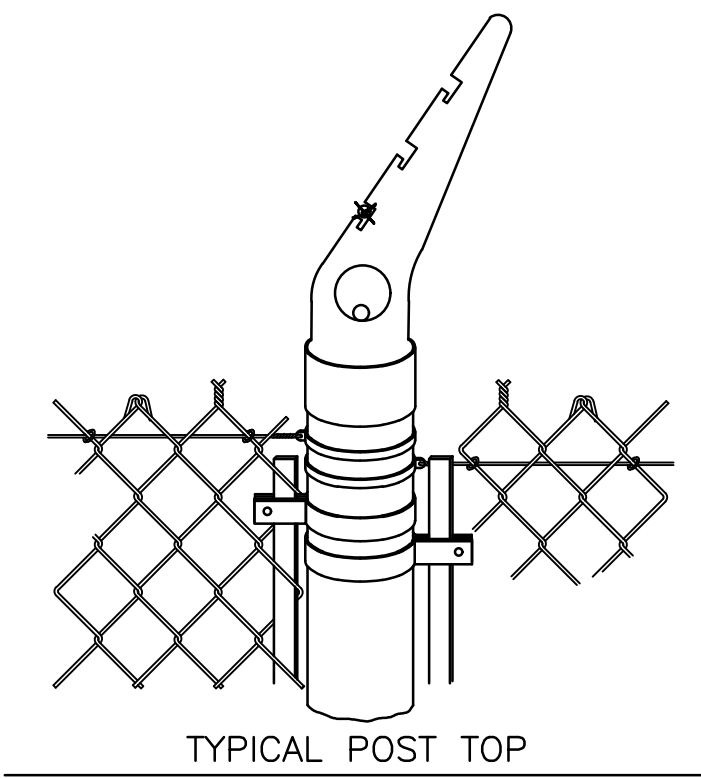
16,320 SF FACILITY
CONCEPTUAL

PROJECT 2670.80611.02
DATE 4/7/25
SHEET
2 OF 3

C:\dowl_pw\40419670\SA-CS-DT-80611.dwg PLOT DATE 2025-4-9 08:47 SAVED DATE 2025-02-07 15:00 USER: r1etovour



- CHAINLINK FENCE NOTES:
1. POSTS SHALL BE SPACED EQUAL DISTANCES APART. MAXIMUM SPACING SHALL BE 10 FEET UNLESS DIRECTED OTHERWISE BY THE ENGINEER.
 2. POST TOPS SHALL BE SECURELY FASTENED TO POST.
 3. BRACE RAILS AND TRUSS RODS SHALL BE SECURELY FASTENED TO POST WITH BRACE BANDS WITH THREADED TAKE-UP ADAPTER FOR TRUSS RODS.
 4. GROUND WIRE SHALL BE ATTACHED TO FENCE FABRIC BY MEANS OF A SPLIT BOLT.
 5. FABRIC SHALL BE STRETCHED TO A SMOOTH UNIFORM APPEARANCE.
 6. DETAILS SHOWN INDICATE GENERAL DESIGN AND DIMENSIONS MAY VARY AMONG MANUFACTURERS.
 7. ALL FENCE POSTS SHALL BE SET IN CONCRETE.
 8. FABRIC SHALL BE PLACED ON UNRESTRICTED SIDE OF POSTS.
 9. TOP RAIL MAY BE USED IN LIEU OF TENSION WIRE. ADJUST TOP BRACE LOCATION TO VERTICAL MIDPOINT ON CORNER POST AND NEXT ADJACENT POSTS IF TOP RAIL IS USED.



1 CHAIN LINK FENCE DETAILS

NOT TO SCALE

CHAINLINK FENCE DESIGN PARAMETERS										
FENCE FABRIC HEIGHT	POST TYPE									
	END-CORNER-PULL				LINE-BRACE				TOP RAIL OR BRACE RAIL	
	PIPE		FOOTING	DIA. (IN.)	PIPE		FOOTING	DIA. (IN.)	PIPE	LB/FT
	SIZE (IN.)	LB/FT	DEPTH (IN.)		SIZE (IN.)	LB/FT	DEPTH (IN.)		SIZE	
8'	2 7/8	5.80	48	15	2 3/8	3.65	40	12	1 1/4	2.27

REVISIONS			
REV	DATE	DESCRIPTION	BY



LITTLE ROCK DUMP STORAGE
JUNEAU, ALASKA

FENCE DETAILS AND TYPICAL SECTION

PROJECT 2670.80611.02
DATE 2/7/25
SHEET
3 OF 3