

**U S SURVEY
No. 3764, ALASKA**
embracing
Lots 1, 2 and 3

SITUATED
ON BOTH SIDES OF THE GLACIER HIGHWAY
FROM
TEE HARBOR TO PEARL HARBOR
ABOUT 20 TO 25 MILES NORTHWESTERLY
OF
JUNEAU, ALASKA

APPROXIMATE GEOGRAPHIC POSITION
OF CORNER NO. 1
LATITUDE 58°26' N LONGITUDE 134°45' W

AREA: 978.86 ACRES

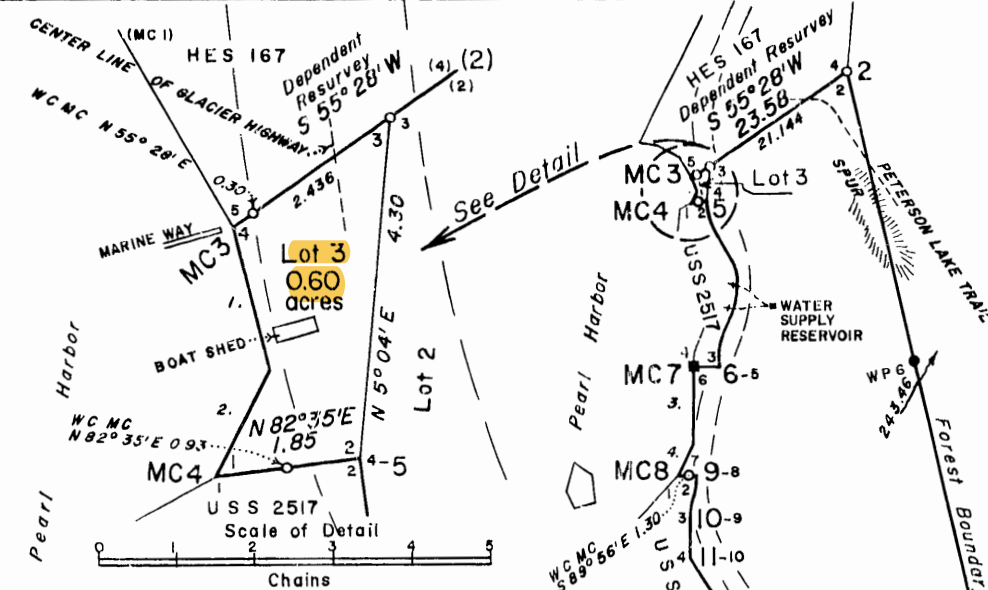
SURVEY EXECUTED BY
ROBERT Q. PICKERING, CADASTRAL SURVEYOR
APRIL 21 to MAY 13, 1960
UNDER SPECIAL INSTRUCTIONS
DATED FEBRUARY 2, 1960
AND
APPROVED MARCH 15, 1960
AND
SUPPLEMENTAL SPECIAL INSTRUCTIONS
DATED APRIL 26, 1960
AND
APPROVED MAY 2, 1960

UNITED STATES DEPARTMENT OF THE INTERIOR
BUREAU OF LAND MANAGEMENT
Washington, D.C. April 17, 1962

This plat is strictly conformable to the approved field notes, and the survey, having been correctly executed in accordance with the requirements of law and the regulations of this Bureau, is hereby accepted.

For the Director

E. J. Hemminger
Chief, Division of Engineering



MEANDERS FROM MC 3 to 4,
PEARL HARBOR
1. S 14°30' E 1.86
2. S 26°43' W 1.50

COURSES & DISTANCES OF BDY.,
FROM MC 4 THROUGH CORNS. 5 & 6
TO MC 7, IDENTICAL WITH BDY.
OF U.S.S. 2517

N 82°35' E	1.85
S 7°25' E	0.81
S 9°48' E	0.77
S 14°34' E	0.77
S 19°20' E	0.77
S 24°06' E	0.77
S 28°52' E	0.76
S 31°20' E	3.64
S 28°05' E	0.56
S 21°35' E	0.56
S 15°05' E	0.56
S 8°35' E	0.56
S 2°05' E	0.56
S 4°25' W	0.56
S 7°39' W	1.60
S 10°16' W	0.95
S 15°30' W	0.95
S 20°44' W	0.95
S 23°21' W	2.23
S 20°29' W	0.66
S 14°45' W	0.66
S 9°01' W	0.66
S 3°17' W	0.66
S 0°25' W	0.78
S 4°06' W	0.74
WEST	3.20

MEANDERS FROM MC 7 to 8,
PEARL HARBOR
3. S 0°39' W 9.93
4. S 25°10' W 4.18

COURSES & DISTANCES OF BDY.,
FROM MC 8 THROUGH CORNS. 9
THROUGH 13 TO MC 14. IDENTICAL
WITH BDYS. OF U.S. SUR. NO. 2745

S 89°56' E	2.165
S 10°30' W	0.31
S 11°31' W	0.375
S 12°31' W	0.375
S 13°32' W	0.375
S 14°32' W	0.375
S 15°32' W	0.375
S 16°33' W	0.375
S 17°03' W	0.13
S 14°12' W	0.355
S 8°31' W	0.355
S 2°50' W	0.355
S 2°51' E	0.355
S 8°32' E	0.355
S 0°39' W	6.115
S 22°30' E	14.46
S 18°07' E	17.825
S 89°32' W	15.40

○ indicates brass capped iron post
■ indicates brass tablet on bedrock
● indicates copper coated steel rod

Scale of Main Plat
Chains
0 10 20 30 40 50 60 70 80 90 100

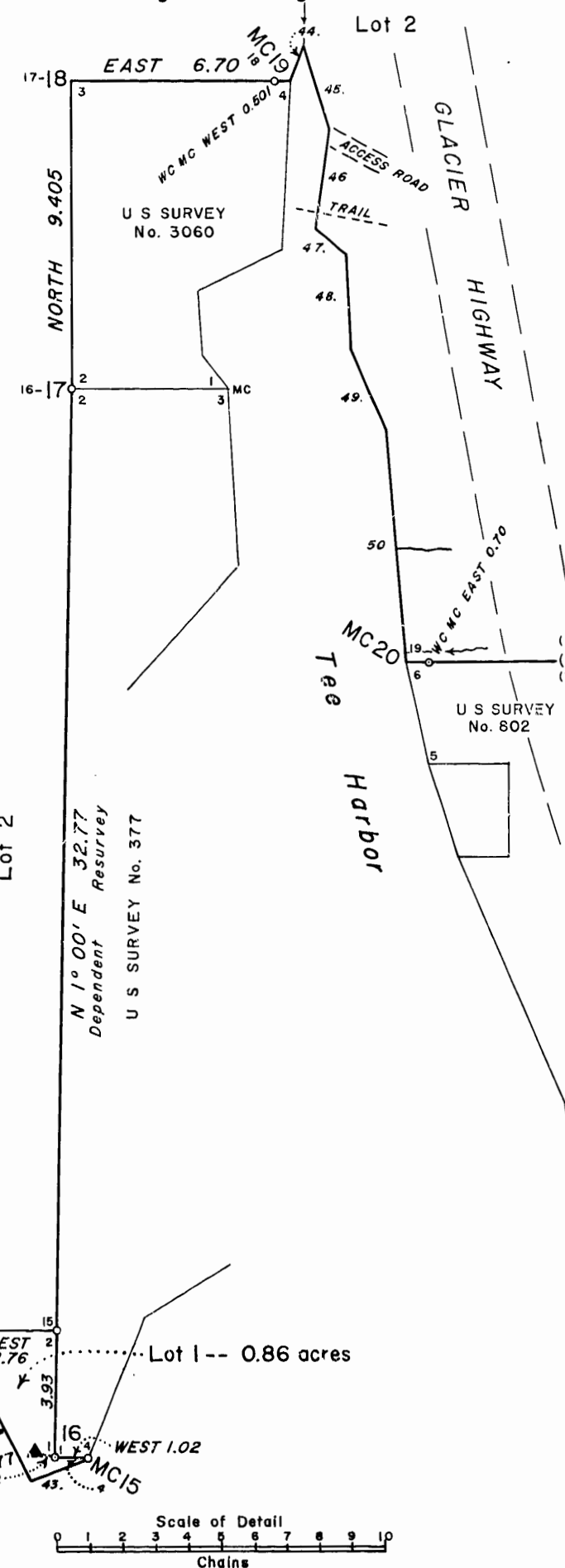
MEANDERS FROM MC 14 TO 15
FAVORITE CHANNEL

5. S 20°06' E	9.45
6. S 21°45' E	8.79
7. S 3°41' E	3.50
8. S 16°41' E	5.87
9. S 35°53' E	6.28
10. S 23°04' E	8.84
11. S 0°55' E	16.33
12. S 17°10' E	10.07
13. S 3°11' W	3.50
14. S 9°04' E	4.29
15. S 61°53' E	1.87
16. S 18°35' E	3.51
17. S 50°41' W	2.40
18. S 9°19' E	2.42
19. S 57°34' E	1.06
20. S 9°25' E	8.50
21. S 28°55' E	3.00
22. S 4°42' E	12.18
23. S 21°50' E	4.30
24. S 7°53' E	11.51
25. S 21°24' E	11.21
26. S 49°22' E	4.53
27. S 19°18' E	2.00
28. S 9°57' E	6.83
29. S 8°06' W	4.00
30. S 8°54' E	13.07
31. S 0°52' E	7.00
32. S 16°31' E	4.82
33. S 30°28' W	2.50
34. S 13°35' E	5.57
35. S 0°53' E	5.10
36. S 4°30' W	2.65
37. S 33°01' E	3.07
38. S 20°57' E	5.01
39. S 32°46' E	1.71
40. S 8°17' E	8.91
41. S 16°49' E	2.75
42. S 26°59' E	3.04
43. N 69°43' E	1.88

MEANDERS FROM MC 19 TO MC 20,
TEE HARBOR

44. N 20°50' E	1.03
45. S 16°37' E	2.65
46. S 7°54' W	3.03
47. S 50°12' E	1.23
48. S 2°40' E	2.90
49. S 23°51' E	2.64
50. S 4°49' E	7.10

Enlarged Diagram



ORIGINAL

UNITED STATES
DEPARTMENT OF THE INTERIOR
BUREAU OF LAND MANAGEMENT

142
BUREAU OF LAND MANAGEMENT
RECEIVED

MAY 31 1962

DIVISION OF ENGINEERING
Anchorage, Alaska

FIELD NOTES

OF

U.S. SURVEY NO. 3764

EMBRACING LOTS 1, 2 AND 3

SITUATED

ON BOTH SIDES OF THE GLACIER

HIGHWAY, FROM TEE HARBOR TO

PEARL HARBOR, ABOUT 20 TO 25 MILES

NORTHWESTERLY OF JUNEAU, ALASKA.

APPROXIMATE GEOGRAPHIC POSITION

OF CORNER NO. 1

LATITUDE 58°26' N, LONGITUDE 134°45' W.

Of the Meridian,

In the State of ALASKA

EXECUTED BY

ROBERT Q. PICKERING, SUPERVISORY CADASTRAL SURVEYOR

Under special instructions dated FEBRUARY 2 1960, which provided

SURVEY
for the surveys included under ~~XXXXX~~ No. 3764, approved MARCH 15, 1960
and supplemental special instructions dated APRIL 26, 1960, approved MAY 2, 1960.
and assignment instructions dated MARCH 29 1960

Survey commenced APRIL 21 1960

Survey completed MAY 13 1960

U.S. SURVEY No. 3764

Chains

Survey commenced April 21, 1960 and executed with a W. and L.E. Gurley transit, Serial No. 391237, of which, the verniers of the horizontal plate and the vertical circle are read to single minutes of arc. After sufficient tests, the instrument was found in satisfactory adjustment.

All measurements are made with a 1/8 in. steel tape, 5.00 chains long, graduated every link for the first chain, with the first link graduated to tenths and the remainder every 10 links. The vertical angles of all slope measurements, are measured with the transit circle and the horizontal equivalents only are entered in these notes.

The geographic position of cor. No. 1, to the nearest half minute, as scaled from the U.S. Geological Survey Map, titled, "JUNEAU" (B-3) "QUADRANGLE", is latitude 58°26' N, longitude 134°45' W.

The bearing was determined from the record bearing of line 3-4, U.S. Survey No. 3060 and carried to all parts of this survey by taking the mean of direct and reverse deflection angles at each instrument station.

The magnetic declination is 30° E.

PRELIMINARY STATEMENT

During the preliminary retracement of the lines of previous surveys, which are common to lines of this survey, a large disagreement in bearing of line 1-2, U.S. Survey No. 377 and both bearing and distance of line 4-5, H.E.S. No. 167 was found. A dependent resurvey of these lines was executed, resulting in new corner descriptions, and courses and distances, as described in the following notes.

As sufficient closure of this survey was obtained by combining with the dependently resurveyed lines and the remaining official record of the adjoining lines, no additional retracements or resurveys were necessary.

In order to avoid duplication of the previous official record field notes of lines identical with lines of this survey, they are shown on the plat of this survey and omitted from these notes.

During the progress of the field work, improvements were discovered in the extreme northwest part, requiring an additional lot. This lot is shown on the plat and designated, Lot 3.

Begin at point for cor. No. 1 and cor. No. 1, Lot 2, identical with cor. No. 7, U.S. Survey No. 802, monumented with a stone, 28x14x12 ins., extending 6 ins. above the ground, firmly set, mkd. and witnessed as described in the official record.

At the cor. point, mkd. by an X on the stone.

Set an iron post, 28 ins. long, 2½ ins. diam., 26 ins. in the ground, with brass cap mkd.