



Port of Juneau

155 Heritage Way • Juneau, AK 99801
(907) 586-0292 Phone • (907) 586-0295 Fax

From: Carl Uchytel
Port Director

To: Public Works & Facilities Committee

Thru: (1) Docks & Harbors Operations-Planning Committee
(2) Docks & Harbors Board
(3) City Manager

Date: January 22nd, 2025

Re: LONE SAILOR MEMORIAL

1. At the September 26th, 2024 Docks & Harbors Board meeting, members from the Pioneers of Alaska presented a plan to erect a statue of the [Lone Sailor](#) along the Juneau waterfront. The “United States Navy Memorial” oversees the casting of the statue and the authorization of placement. From their website:

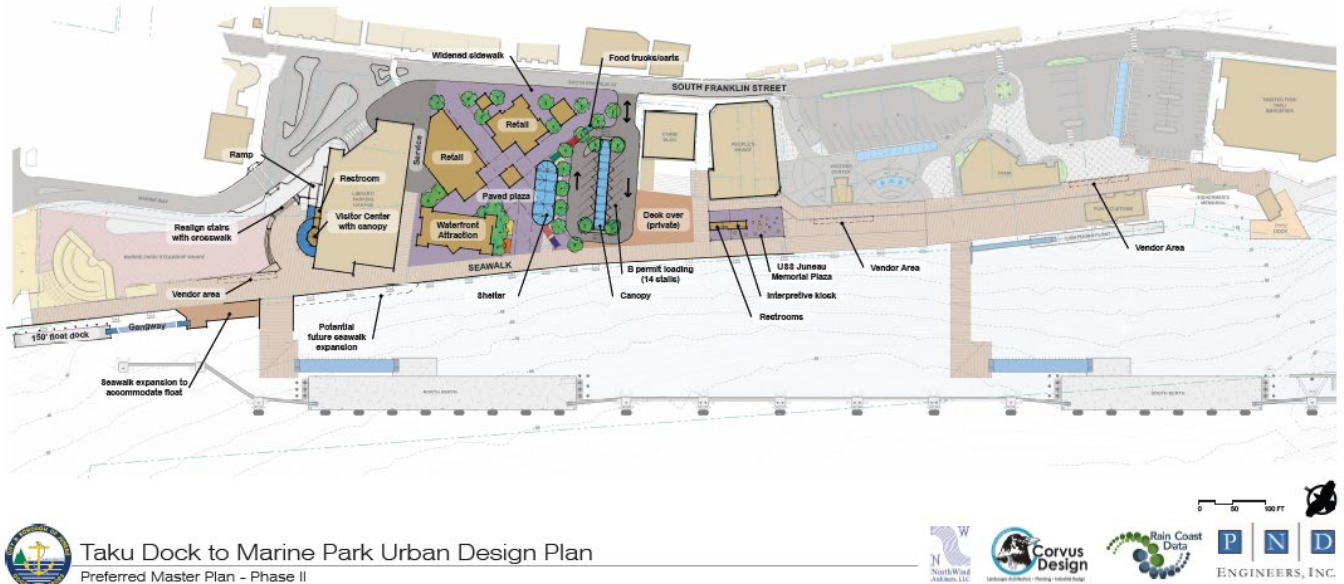
The Lone Sailor statue is the iconic symbol representing the United States Navy Memorial's mission to Honor, Recognize, and Celebrate the men and women of the Sea Services, past, present, and future; and Inform the public about their service. These meaningful statues provide a reminder to active duty, veterans, and civilians that they serve a grateful nation. The Navy Memorial's Statue City Program began in 1997 with the placement of a Lone Sailor statue at Recruit Training Command in Great Lakes, IL. There are 19 Lone Sailor Statues around the world, including the original on Navy Memorial Plaza in Washington, DC.

2. The Pioneers of Alaska have begun the process to acquire the Lone Sailor statue and ask for permission to locate along the downtown Seawalk. The details from the Navy Memorial are outlined below and identification of an appropriate location is paramount to the Pioneers of Alaska to move forward with their civic plans.

The process for placing a statue begins with a written request to the Navy Memorial identifying location, timeline, and fundraising plan for the project. Once the project is approved and the initial deposit of \$50,000 is raised, the statue is guaranteed upon site preparation and final payment. The Navy Memorial asks to raise at least \$350,000 for the statue, which includes the statue, crating, transportation, a description, a link for fundraising on the Navy Memorial website, a special bronze plaque provided explaining the Lone Sailor, and Navy Memorial leadership attendance at events including fundraisers and the dedication ceremony. The cost of the statue does not include land acquisition, site preparation, or other costs that the local committee may incur. The Lone Sailor statue is 7' 4" tall and, together with the sea bag, weighs 977 pounds. The Navy Memorial serves as an advisor to the project and, as an IRS-approved 501(c)(3) tax-exempt organization, manages tax-deductible donations to support the project.

Lone Sailor Statue Memorial

3. The most logical choice for the Lone Sailor statue would be in the area denoted in the [Marine Park to Taku Dock Urban Design Plan](#) as “waterfront attraction”.



Although there have been several ideas for this area, it seems reasonable that placement of the Lone Sailor statue could reside here until a higher and best use is determined. At that point, there may be other opportunities to relocate the statue to an improved USS JUNEAU Memorial site, the existing USS JUNEAU Memorial site, the potential uplands park at the Huna-Totem Dock or a location to complement the Coast Guard Dock improvements for the STORIS.

4. I recommend support of the Pioneers of Alaska (Igloo 6) efforts to place a Lone Sailor statue in the vicinity of the Waterfront Attraction identified in the Marine Park to Taku Dock Urban Design Plan.

#

Encl: Photo of Lone Sailor Statue

Copy: Pioneers of Alaska (Igloo 6)
Tourism Director



Lone Sailor Statue at Normandy Beach