

LEGEND

- ★ Location of Interest
- Study Area
- Deep-Seated Bedrock Slide
- Engineered Slope*

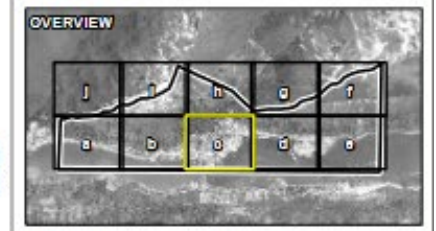
Landslide Hazard
(For Hazard Designation Definitions Refer to Table 1.4 and the Glossary of Terms in the Report)

- Low
- Moderate
- High
- Severe
- Severe If Deep-Seated Bedrock Slide Falls

Initiation Zone
Runout Zone
Potential Initiation Zone for Deep-Seated Bedrock Slide

Base Data

- Index Contour (100 ft)
- Intermediate Contour (25 ft)
- Road
- Land Parcel



NOTES

- * Engineered slope not evaluated by Terra Tech for this study
- Base data source:
- Contours generated from 2013 LIDAR provided by C&J
- Additional contours generated from 2013 LIDAR provided by C&J
- Hydrology and roads obtained from Alaska Department of Natural Resources
- Terrain Classification based on Terrain Classification System for British Columbia, Version 2, 1997
- Primary Imagery provided by C&J 2013
- Background Imagery provided by ESRI, Maxar (2020)

STATUS ISSUED FOR USE

JUNEAU LANDSLIDE AND AVALANCHE ASSESSMENT

Landslide Hazard Designation Mapping

PROJECTION State Plane Alaska Zone 1 2001	DATUM NAD83	CLIENT CITY OF JUNEAU
Scale: 1:5,000		TETRA TECH
900 150 0 900 Feet		
FILE NO. E:\RCD00166-01_FIG1_6_HazardDesignation.mxd	DWN MRV	CHK SL
OFFICE T4-20M	APVD SJK	REV 0
DATE April 27, 2022	PROJECT NO. ENR E:\RCD00166-01	

Figure 1.6c