

Áak'w Landing

JUNEAU



The Ovoid

The Ovoid is the mother of Tlingit formline design. The shape is the building block that forms the visual center point from which all design patterns are created. From the Ovoid, all artwork develops and flows to establish movement and meaning.

Huna Totem
DEVELOPMENT GROUP



HUNA TOTEM



CORPORATION

Key HTC Team Members



Russell Dick
President and CEO
Huna Totem



(907) 723-9891



russell.dick@hunatotem.com



Tyler Hickman
SR Vice President
Icy Strait Point



(907) 789-8601



tyler@icystraitpoint.com



Mickey Richardson
Director of Marketing
Huna Totem/Icy Strait Point



(907) 789-8604



mickey@hunatotem.com



Glory Scarano
CFO
Huna Totem



(907) 723-2827



gscarano@HunaTotem.com



Fred Parady
Chief Operating Officer
Huna Totem



(907) 723-3903



fparady@hunatotem.com



Mike Reimers
Director Port Development
Icy Strait Point



(305) 510-6138



mike@icystraitpoint.com

HUNA TOTEM



CORPORATION

Huna Totem DEVELOPMENT GROUP

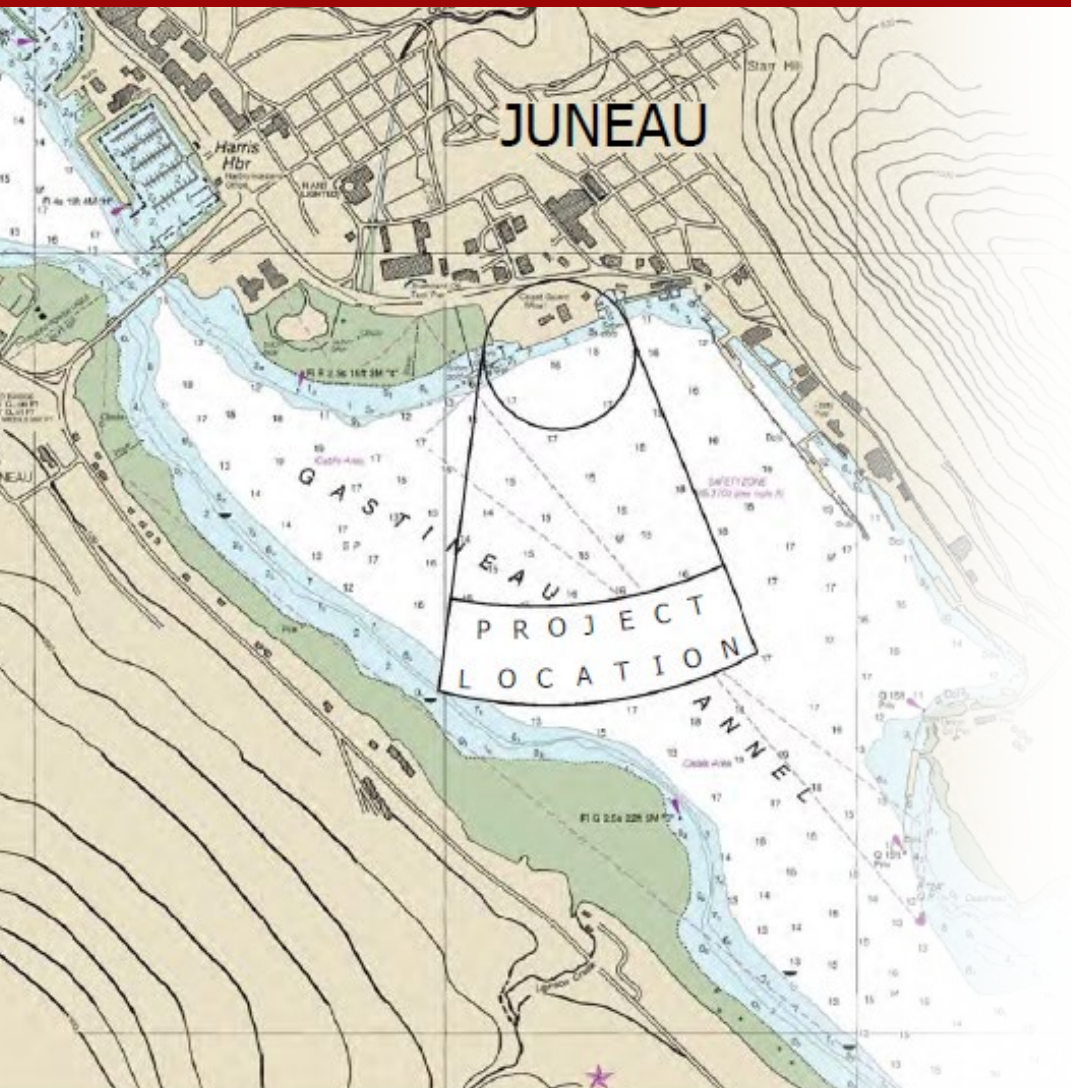


Methodology & Concept

HUNA TOTEM



CORPORATION



Our vision for the project is to create a dock and associated facilities that fully integrate the necessary elements of efficiency, durability, sustainability, smooth traffic and pedestrian flows, culture and history. Our collective company core values extend well beyond the specifics of the project boundaries to encompass the value equation that is driven by delivering a compelling project that guests experience as unique, relevant, and a value for their investment of time and money. The design concepts for the port follow five key principles:

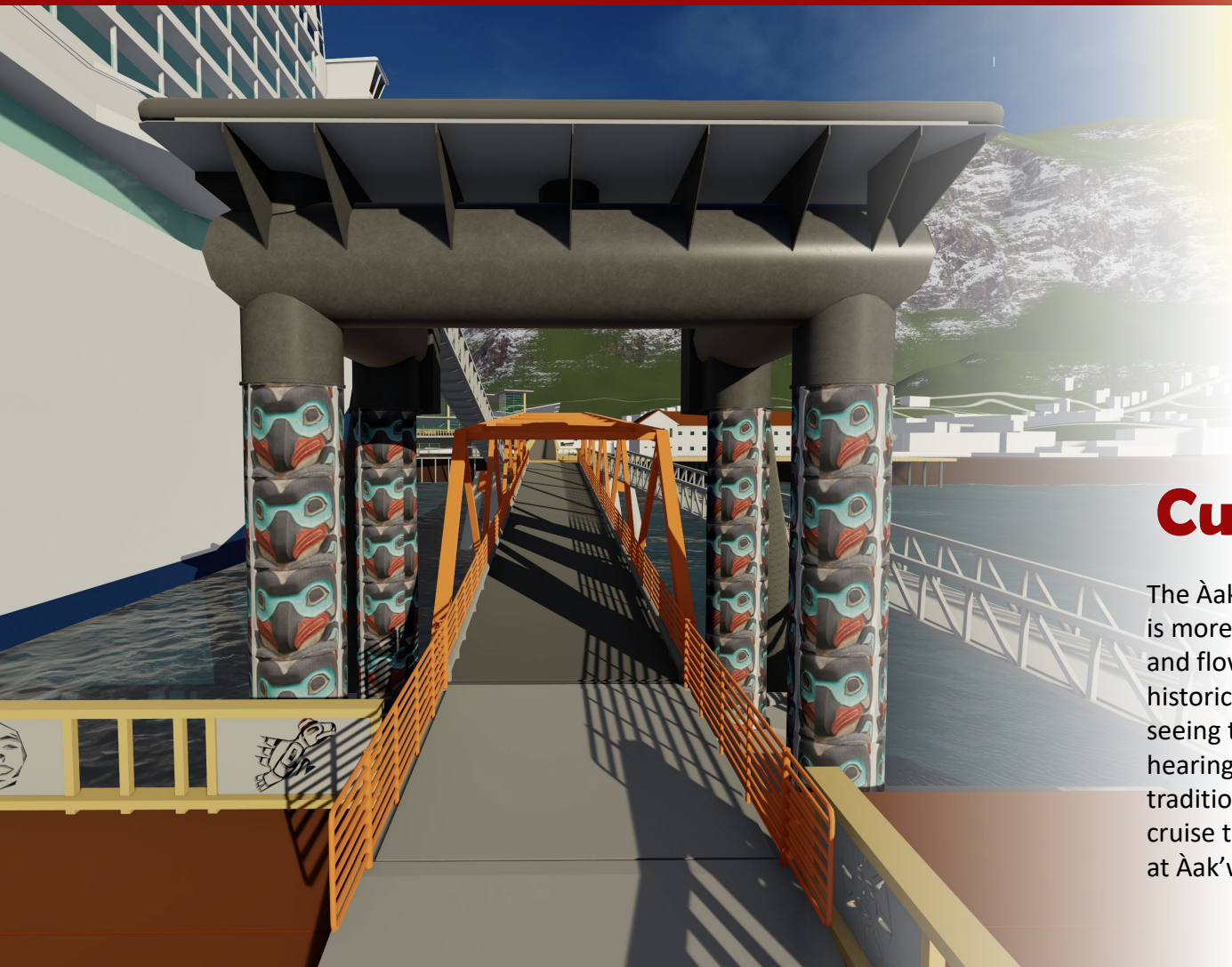
- 1 Represent Local Culture & People
- 2 Curated Traffic Flow
- 3 Open For Business Year Round
- 4 Meet NCLH Community Commitments
- 5 No Pixie Dust

Sustainability

HUNA TOTEM

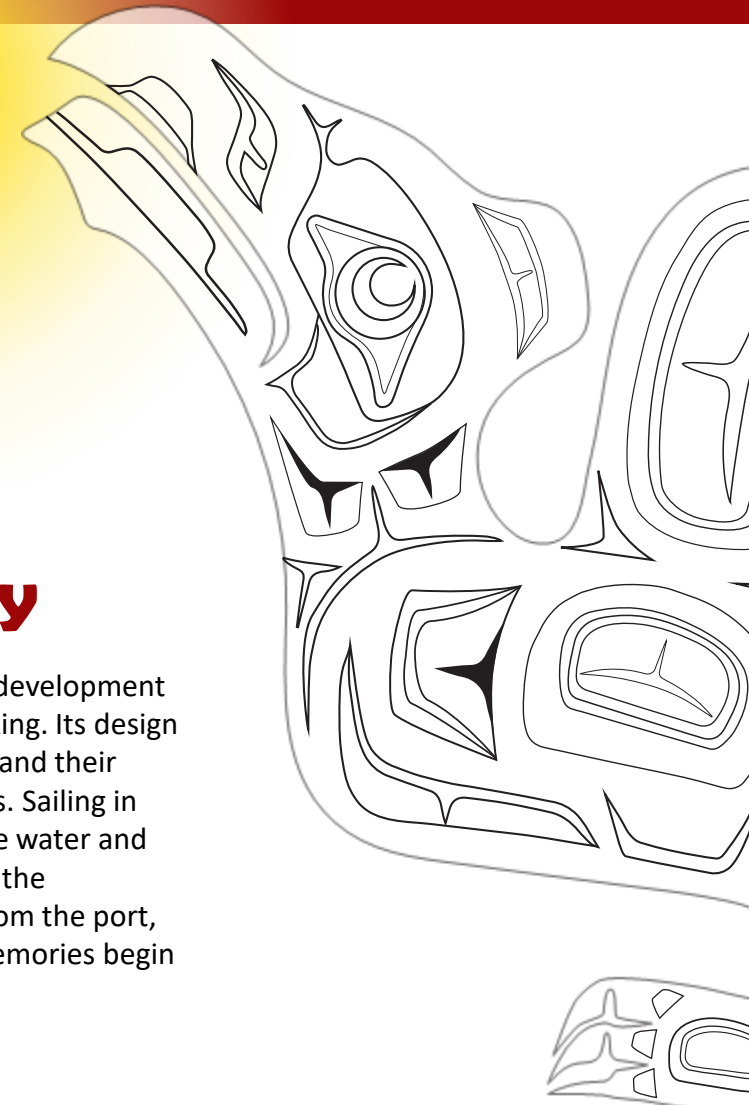


CORPORATION



Cultural Journey

The Āak'w Landing's berths and upland development is more than a simple dock and bus parking. Its design and flow tell the story of Alaska Natives and their historic ties to Juneau's lands and waters. Sailing in seeing totem pole faces reflecting on the water and hearing Goldbelt Tlingit performers sing the traditional welcome songs resonating from the port, cruise traveler will know a lifetime of memories begin at Āak'w Landing.



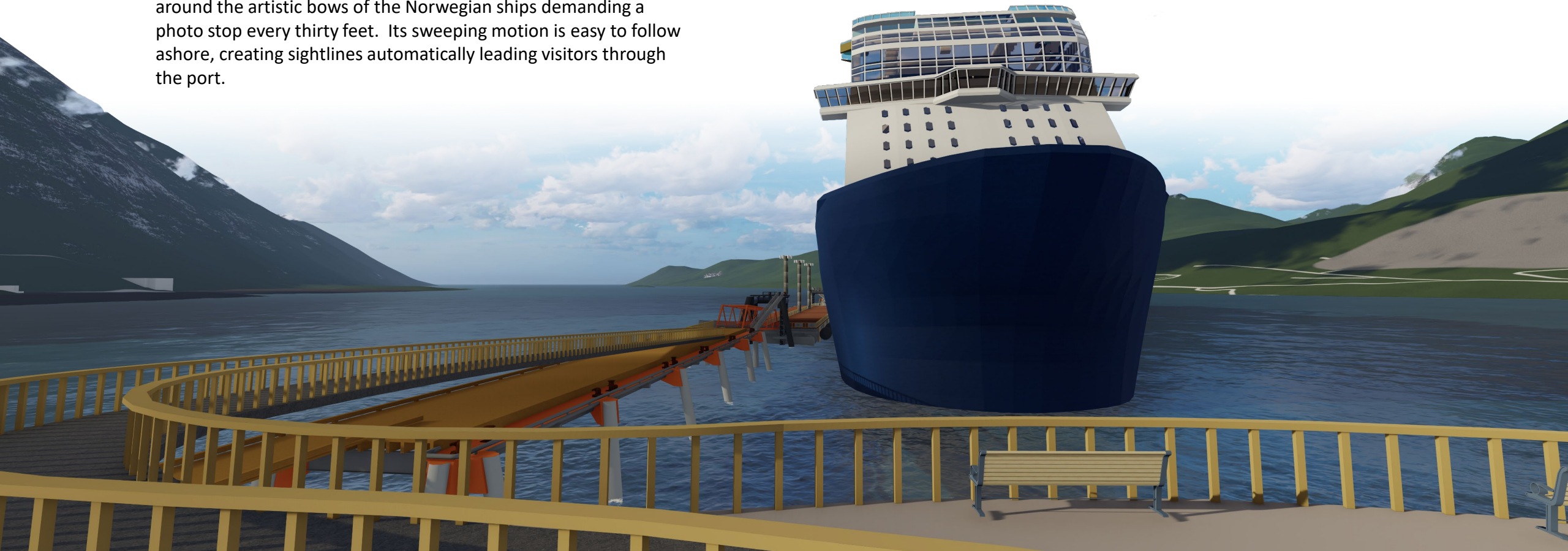
HUNA TOTEM



CORPORATION

The SkyWalk - Curved Trestle

The SkyWalk will make Àak'w Landing one of the most Instagramable ports in the world. Gradually moving cruisers from sea level to twenty-five feet above street level, the SkyWalk wraps around the artistic bows of the Norwegian ships demanding a photo stop every thirty feet. Its sweeping motion is easy to follow ashore, creating sightlines automatically leading visitors through the port.



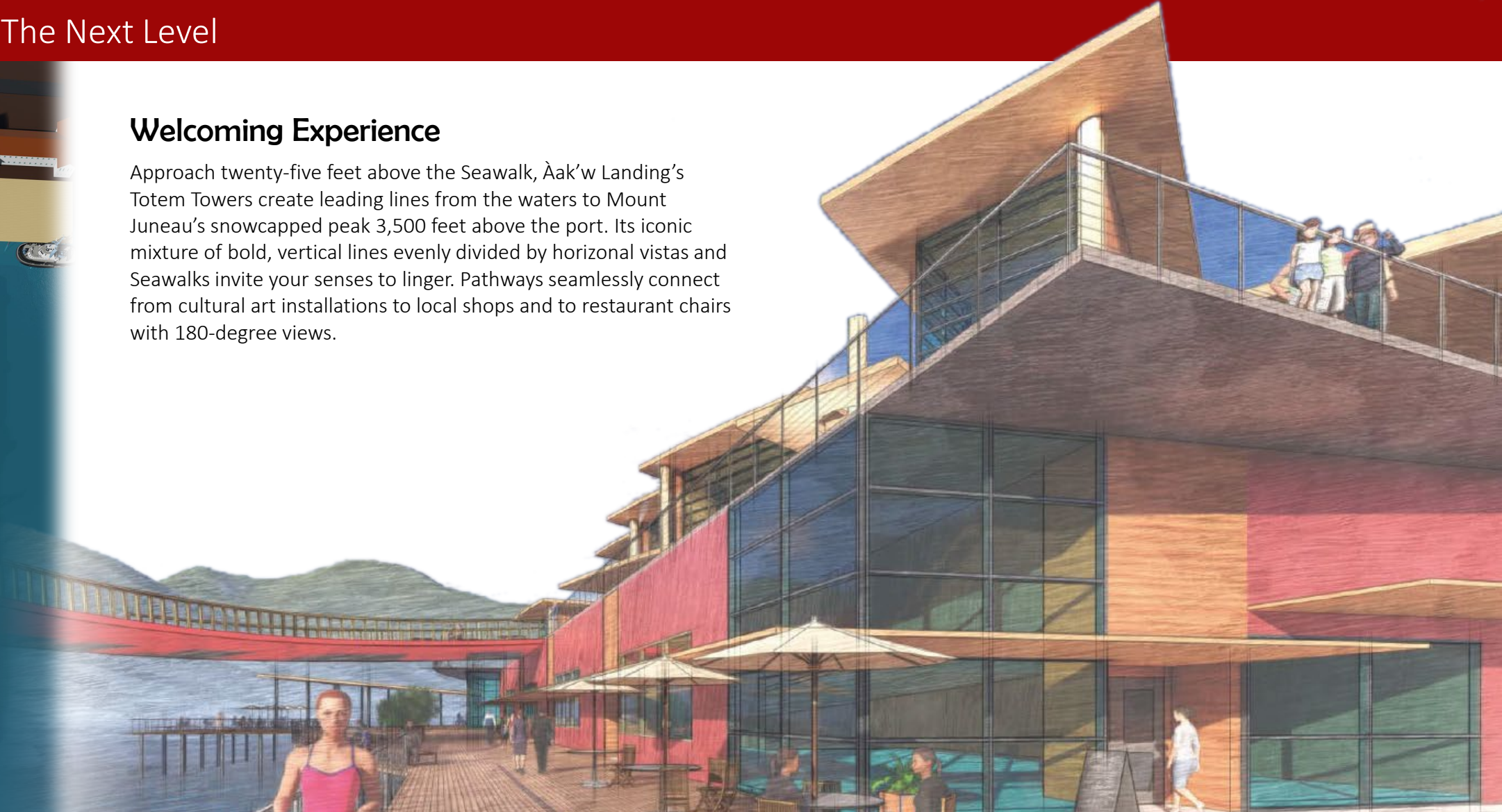
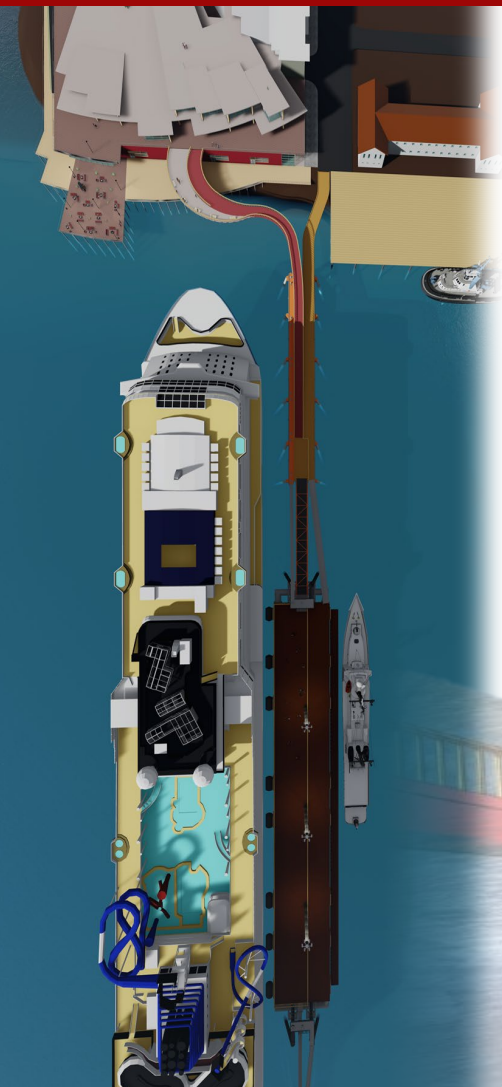
HUNA TOTEM



CORPORATION

Welcoming Experience

Approach twenty-five feet above the Seawalk, Àak'w Landing's Totem Towers create leading lines from the waters to Mount Juneau's snowcapped peak 3,500 feet above the port. Its iconic mixture of bold, vertical lines evenly divided by horizontal vistas and Seawalks invite your senses to linger. Pathways seamlessly connect from cultural art installations to local shops and to restaurant chairs with 180-degree views.

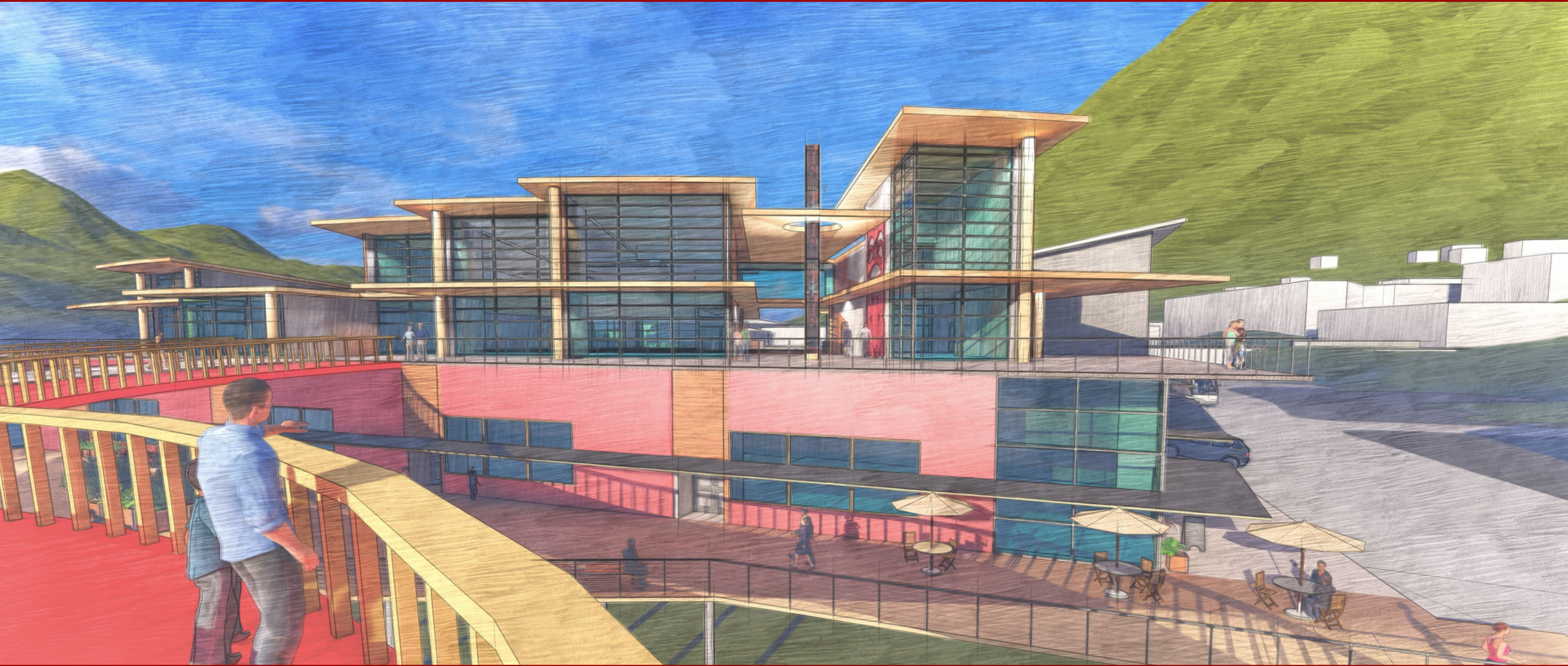


HUNA TOTEM



CORPORATION

Guest Experience



HUNA TOTEM



CORPORATION



Àak'w Landing finally brings Alaska cuisine to Juneau's waterfront. Aided by the site's architectural design, the restaurant spaces bring the outdoor experience inside while leaving the weather elements out. A series tri-level canopy roof lines, glass awnings and glass entry ways, the restaurants are flexible with the weather, traffic patterns and now have a modern waterfront space to provide Juneau with year-round service. With two waterfront view levels, patrons can sit on the tideline or at 45 feet above street-level without an obstructed view of the mountains or the Gastineau channel.



Partnering with renowned Tracy LaBarge of Tracy's Crab Shack, Àak'w Landing delivers on our locals- only development strategy, maintains Tracy's current presence on the site, and looks to expand Tracy's high-end Salt restaurant and increases Tracy's capacity to grow her culinary tour products.

HUNA TOTEM



CORPORATION

Community Park

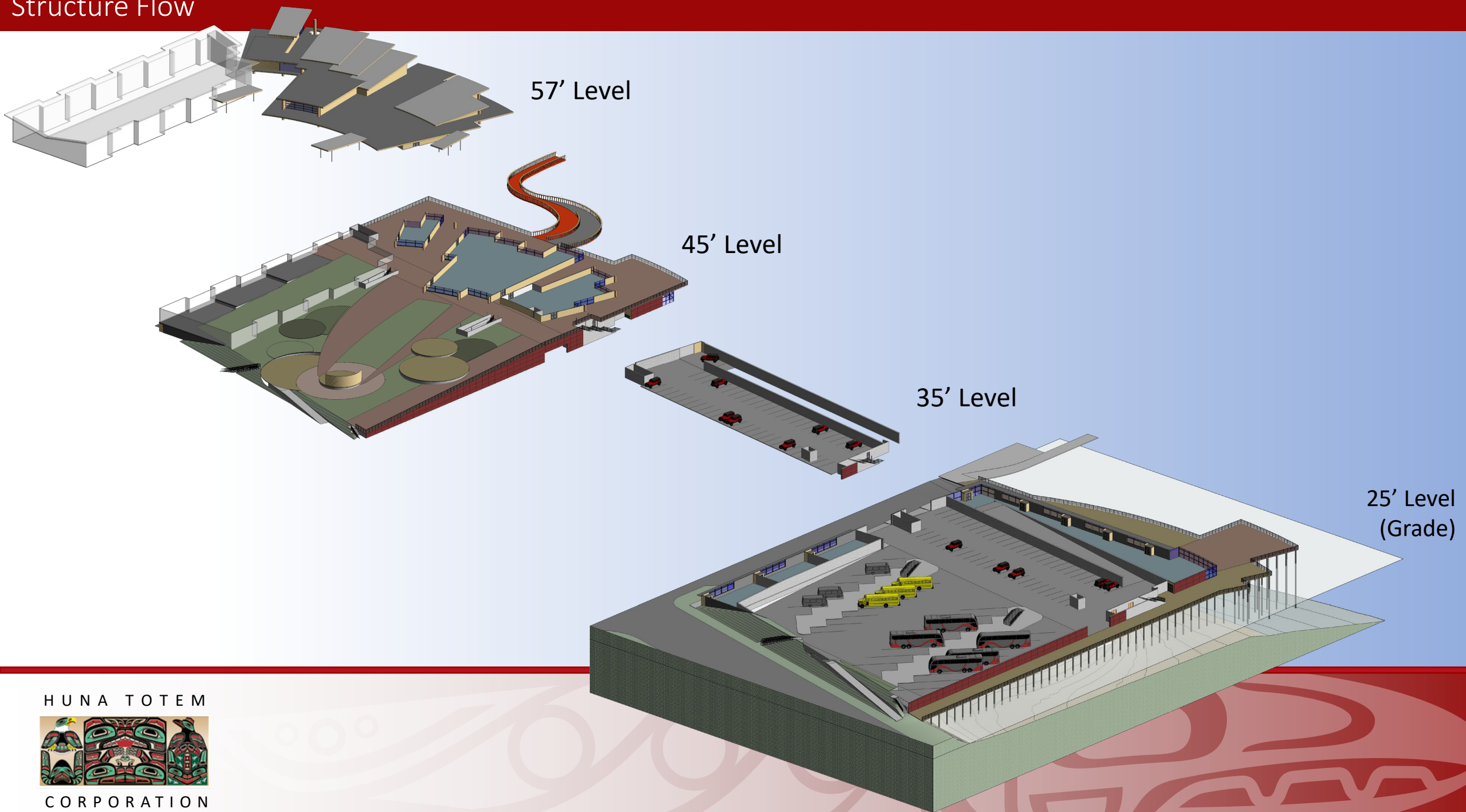


HUNA TOTEM



CORPORATION

Structure Flow



HUNA TOTEM



CORPORATION



Flex Space Design

Conference

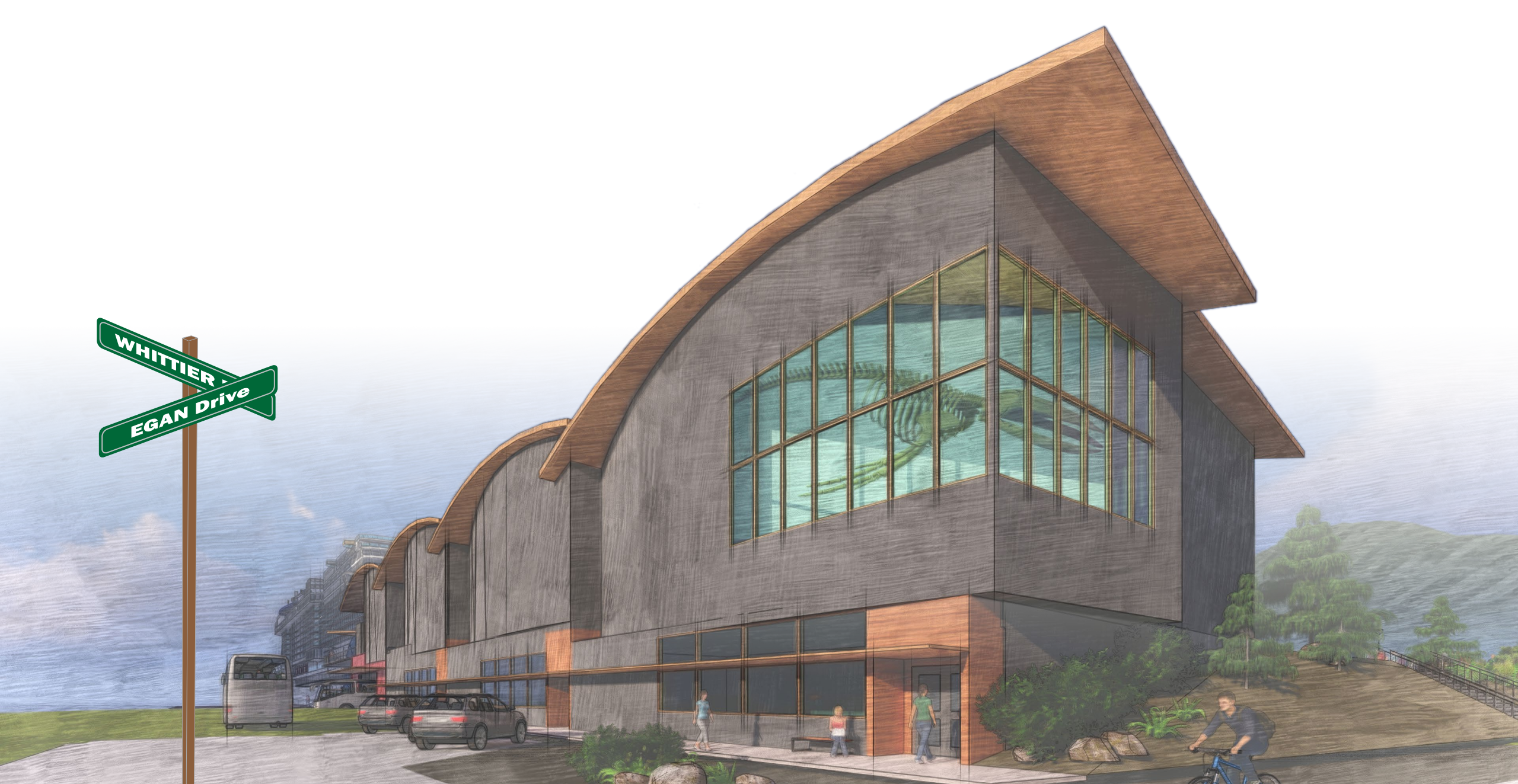


Ocean Center

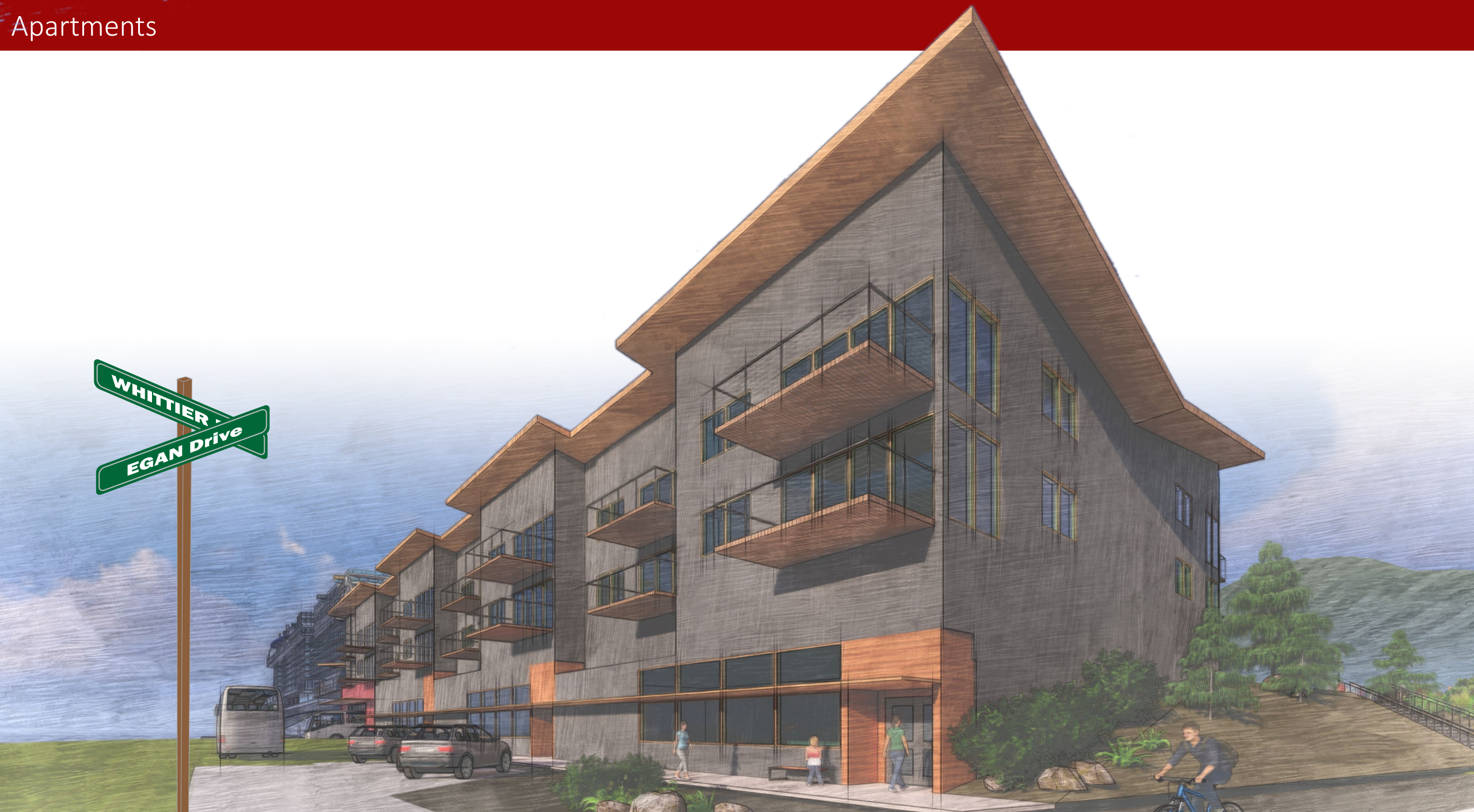


Apartment

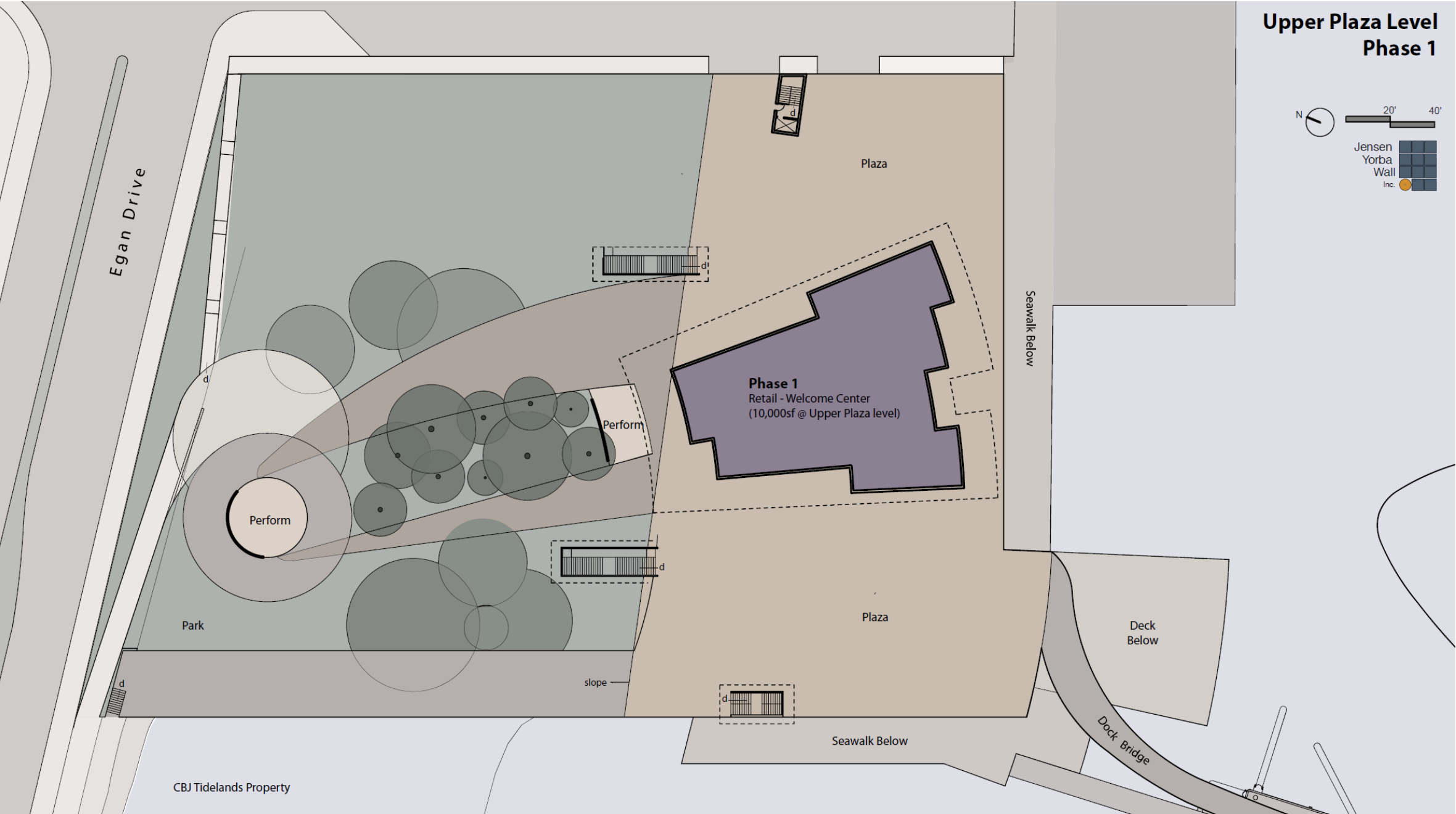




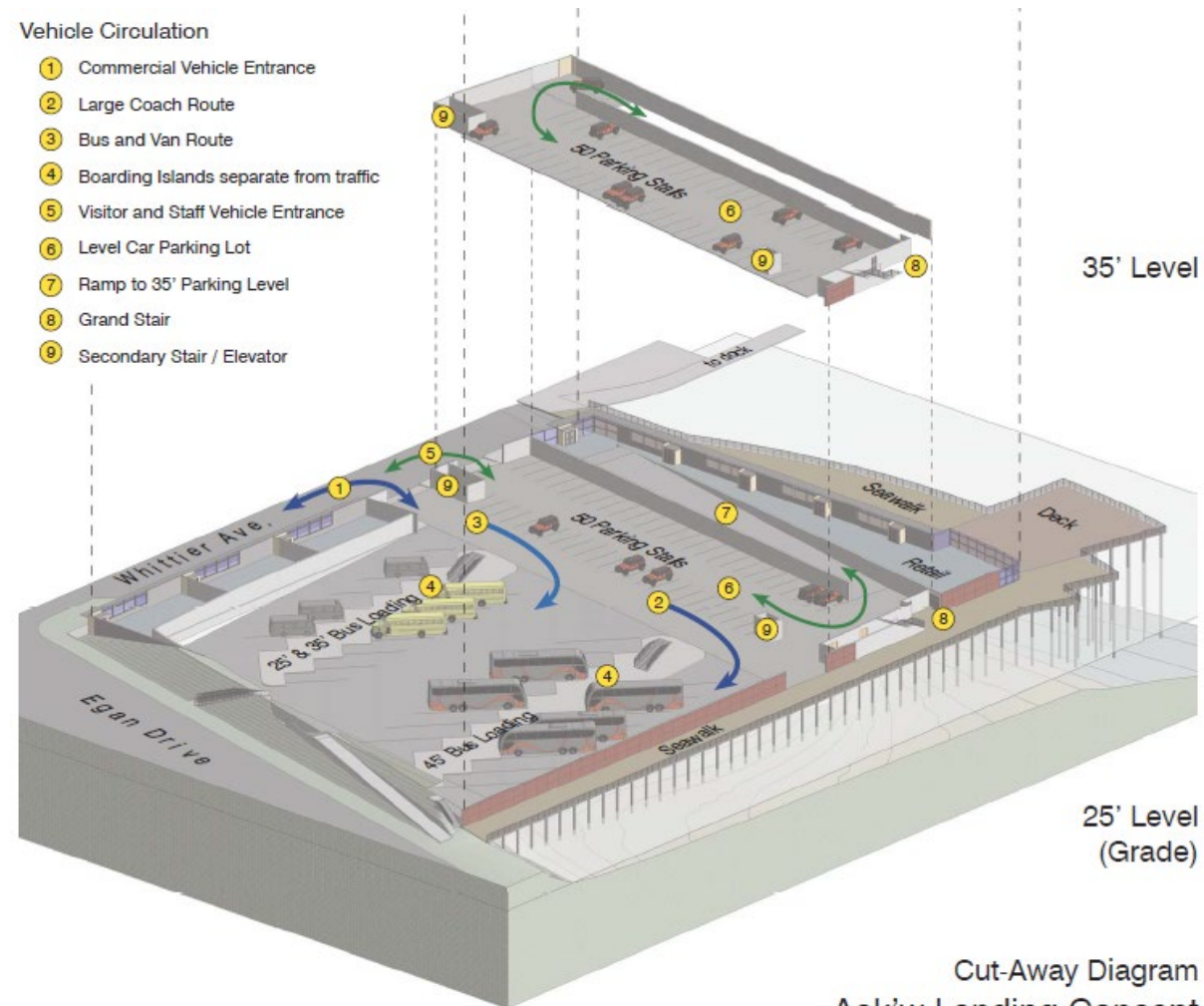
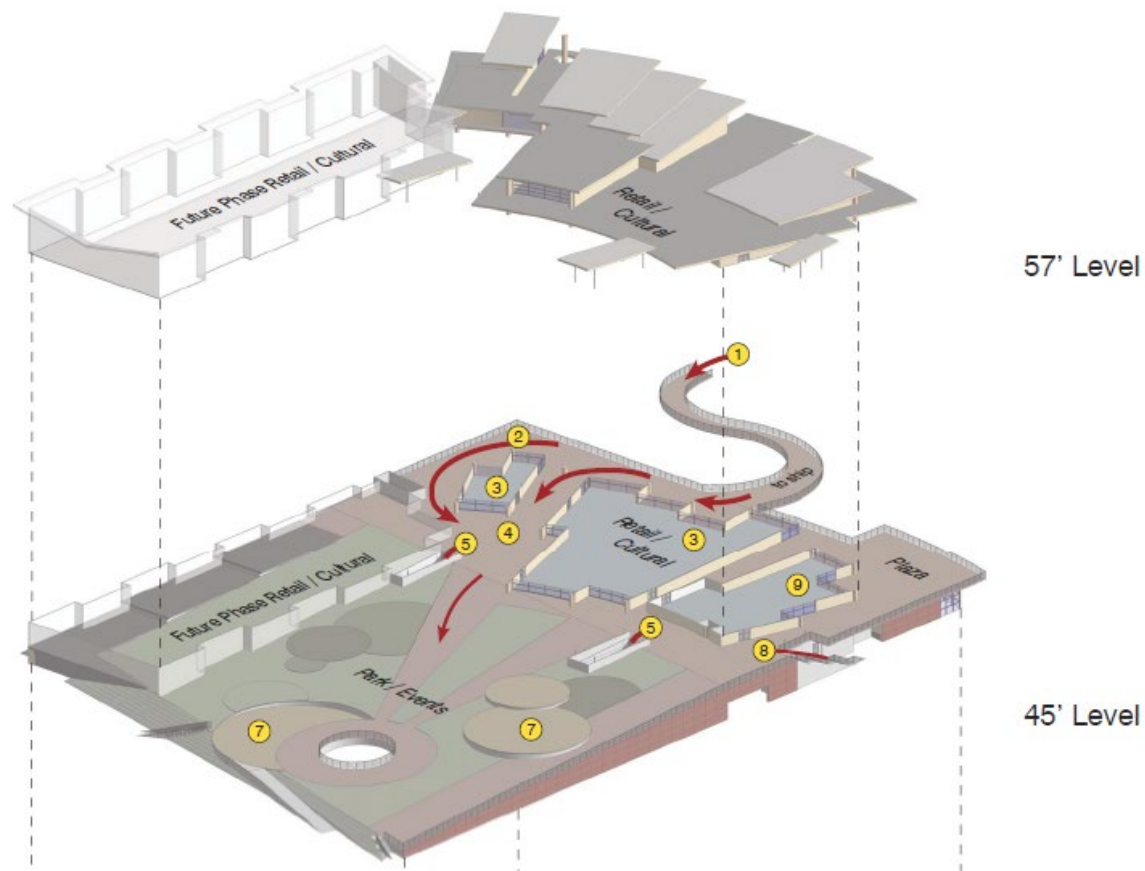


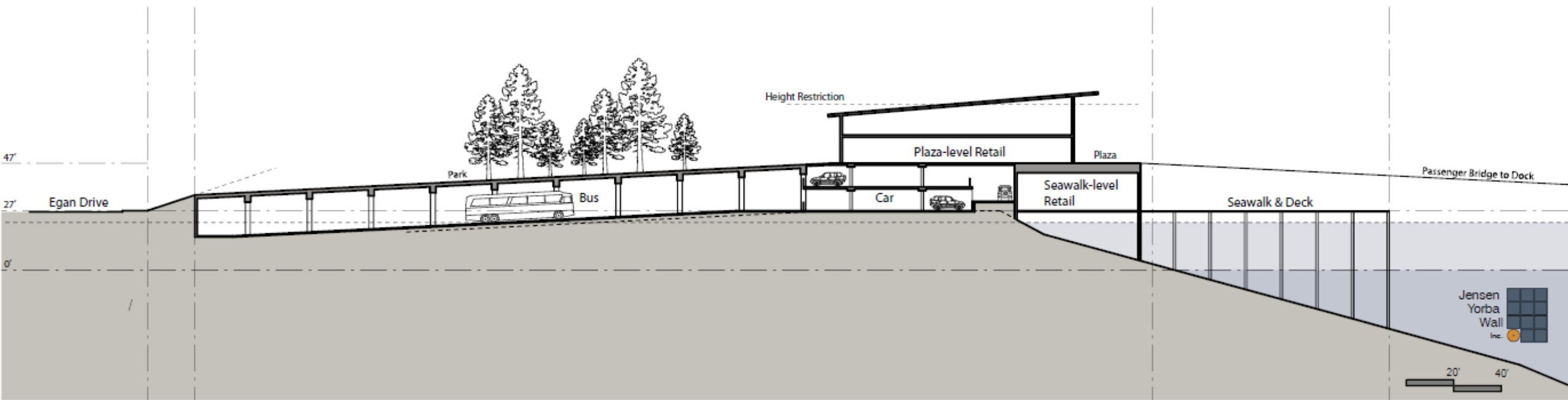


Phased Construction







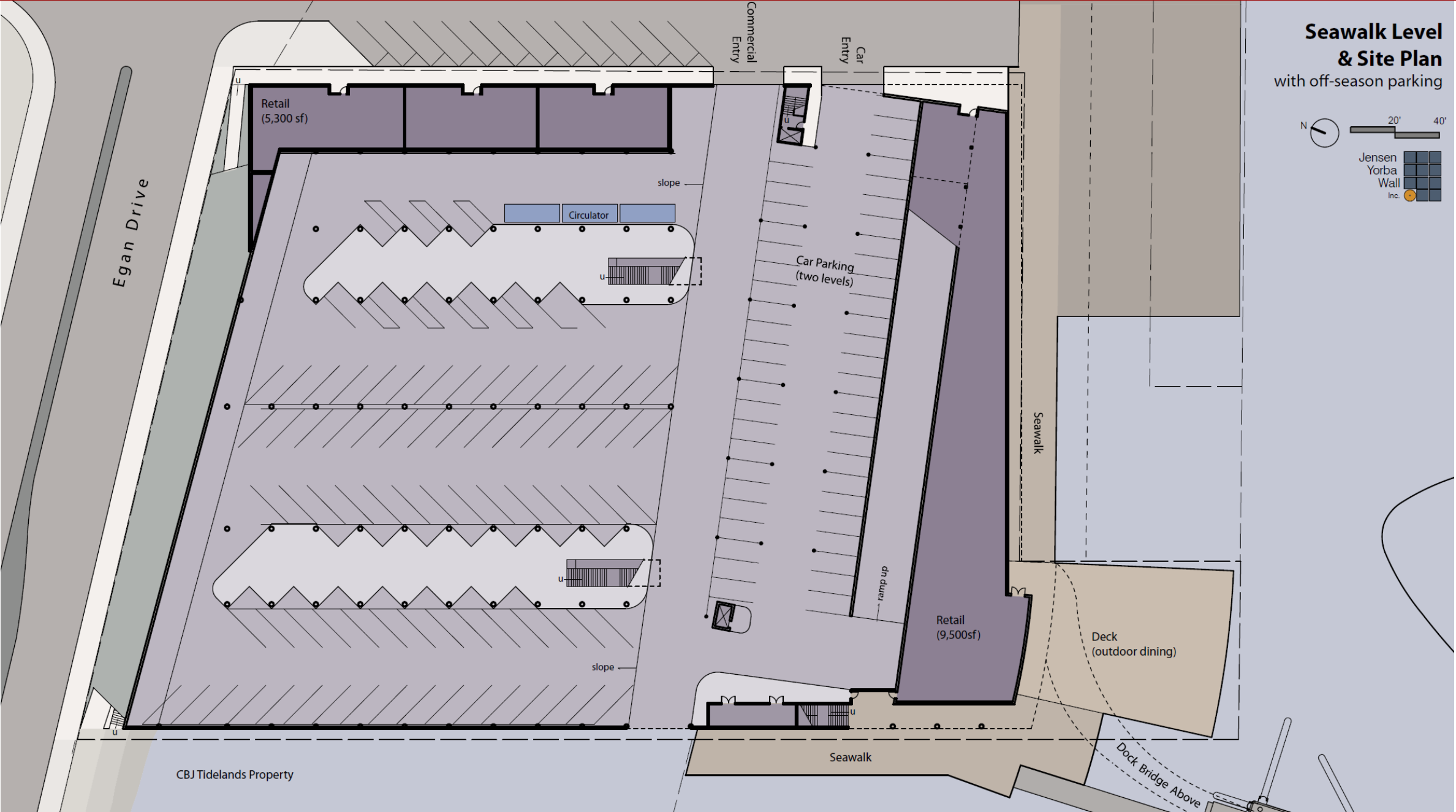


HUNA TOTEM

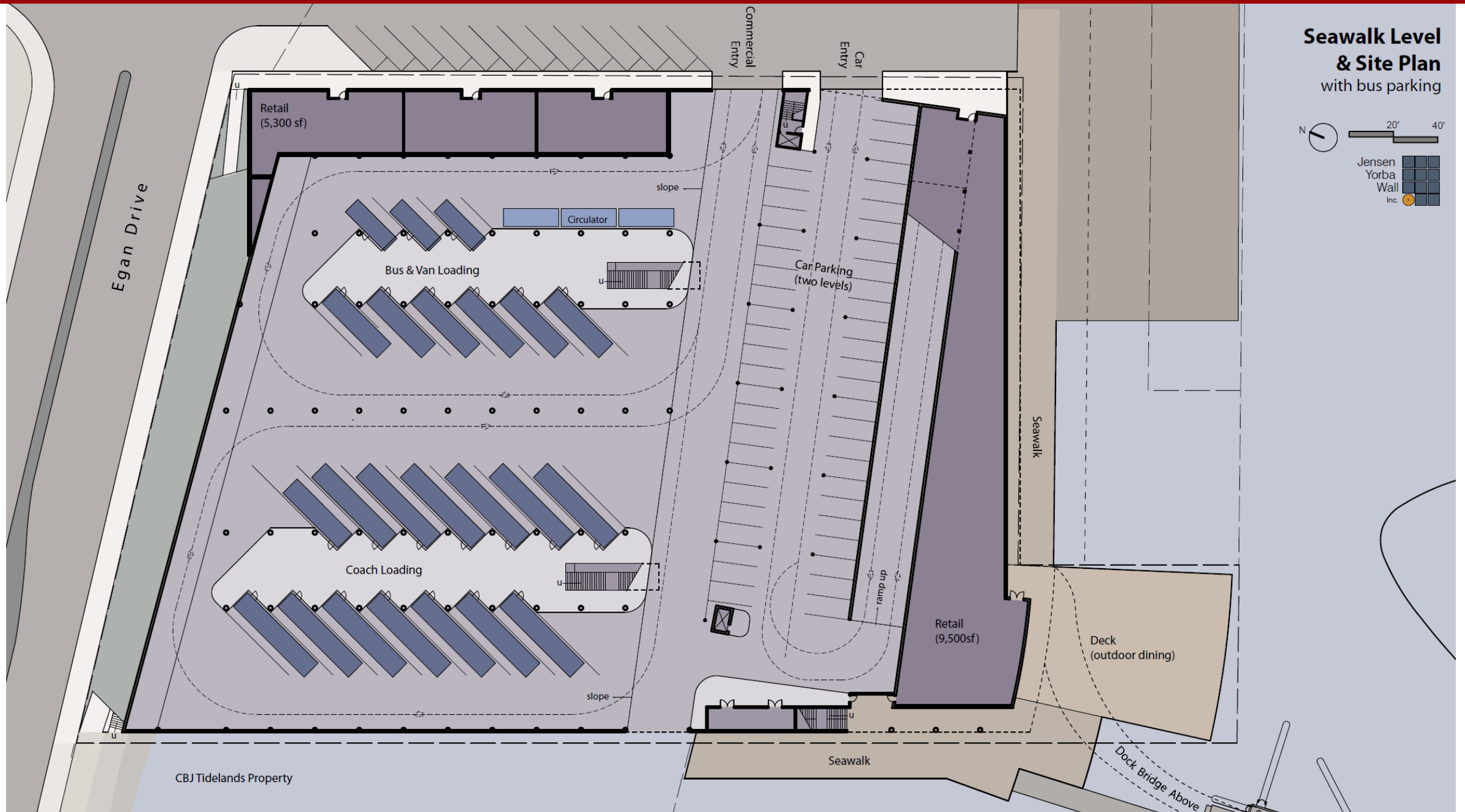


CORPORATION

Event Parking – With Circulator



Tour Operation – With Circulator



HUNA TOTEM



CORPORATION

ICY STRAIT



—POINT—

HOONAH, ALASKA



Huna Totem 
DEVELOPMENT GROUP

HUNA TOTEM



CORPORATION