

Future of City Hall

Does City Hall need to remain Downtown or is the Assembly, and community, open to moving it to the Valley?

Does the Assembly want to continue exploring leasing property or should we figure out how to move into a JSD facility?

Existing City Hall Buildings and Employees

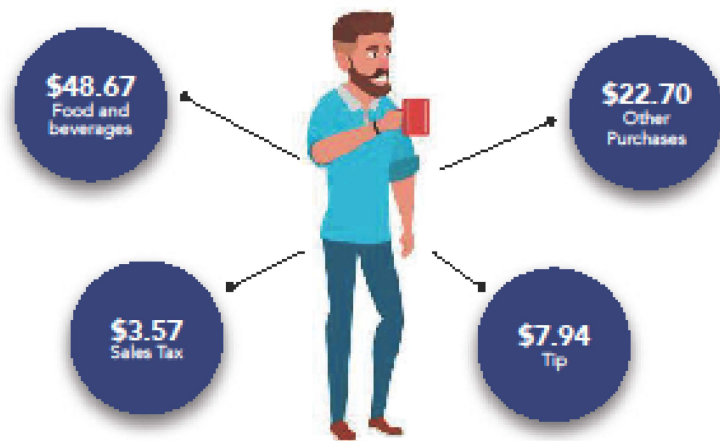


Timeline

- Issued RFI
 - Reviewed RFI at 12.18.24 COW
 - Reviewed Respondents at 1.29.24 COW
 - 3 respondents: gave direction to enter into negotiations with Burns Building & desire to have all employees in one building.
- Fast forward: February 22, 2024 - JSD adopted final reorganization plan. CBJ will take possession of 3 facilities July 1, 2024
 - Floyd Dryden Elementary
 - Marie Drake
 - JSD Administrative Building
- Lease @ Marine View Expires on July 1, 2024 (need to move out of Muni Way ASAP).

Results of CBJ Downtown Employee Survey

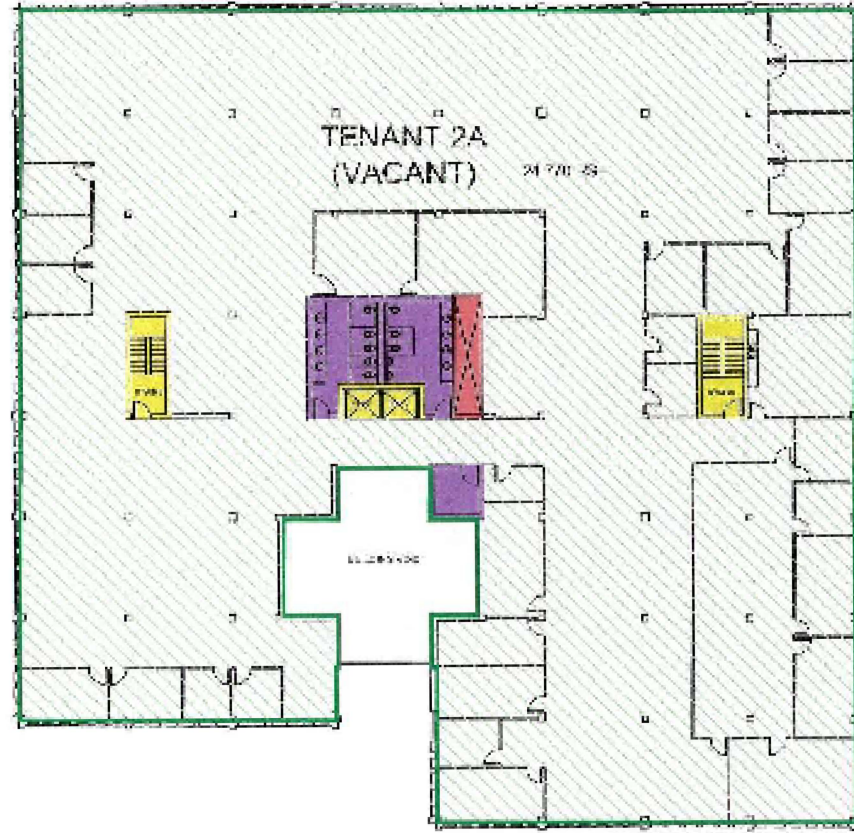
CBJ worker average weekly downtown spending associated with workday

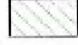



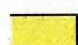



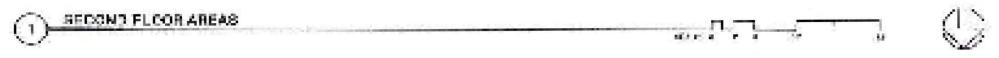
=**\$4,310** annually per person
=**\$706,782** annually by 164 workers

Michael J. Burns Building Home of the Permanent Fund Corporation





-  TENANT SPACE
-  FLOOR AMENITIES/ SUPPORT
-  BUILDING AMENITIES/ SUPPORT / CIRCULATION
-  FLOOR CIRCULATION
-  VERTICAL CIRCULATION
-  GROSS BUILDING

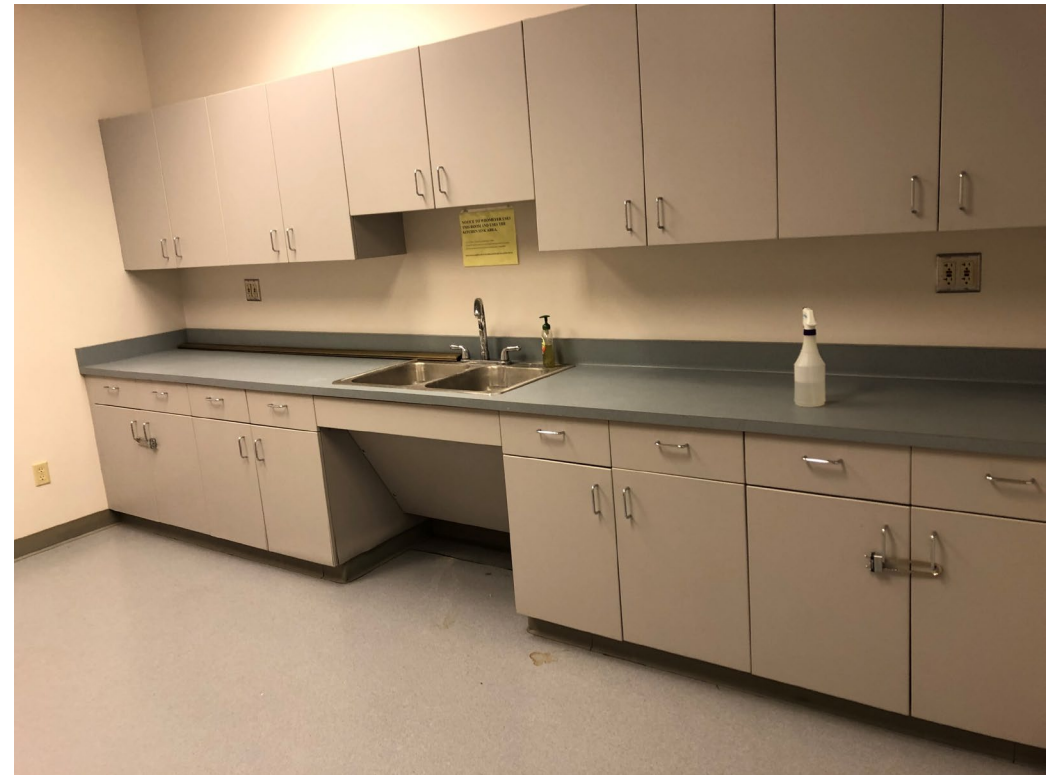


Burns Chambers (Board of Education Room)

Chambers



Kitchenette adjacent to chambers



JSD Administration Building

Conference Room



Hallway



Marie Drake

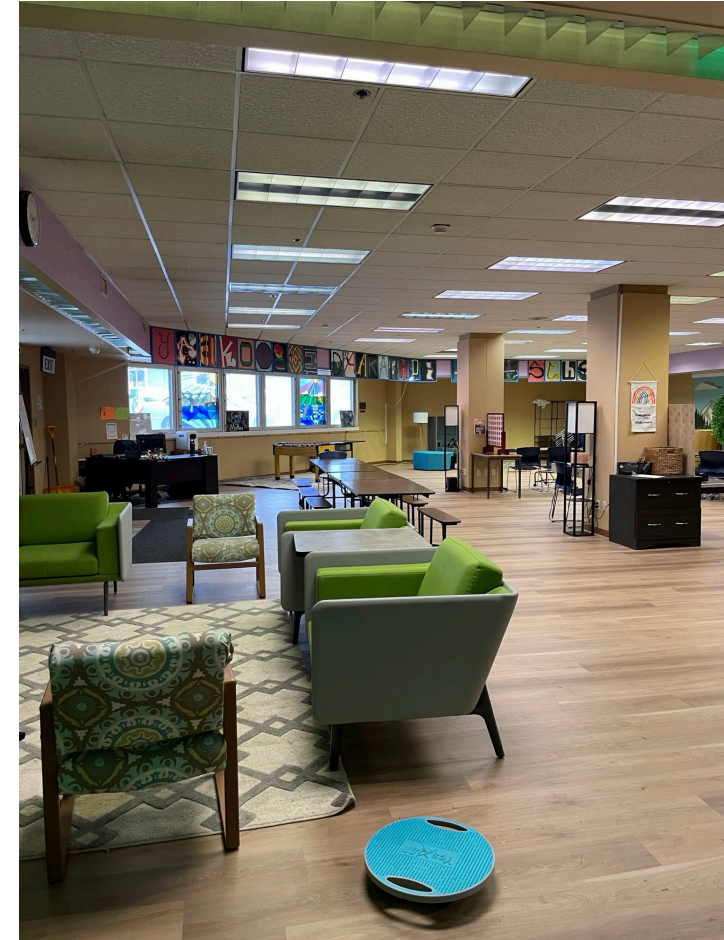
Bathroom



Classroom



Marie Drake Commons: Potential Chambers





Marie Drake

Central District Office

DCI Parking
70 spaces

400 ft

Burns Parking
87 spaces

Burns Building

CCFR

1850 ft
0.35 miles

450 Whittier
45 spaces

JACC/ CH
100 spaces

Floyd Dryden

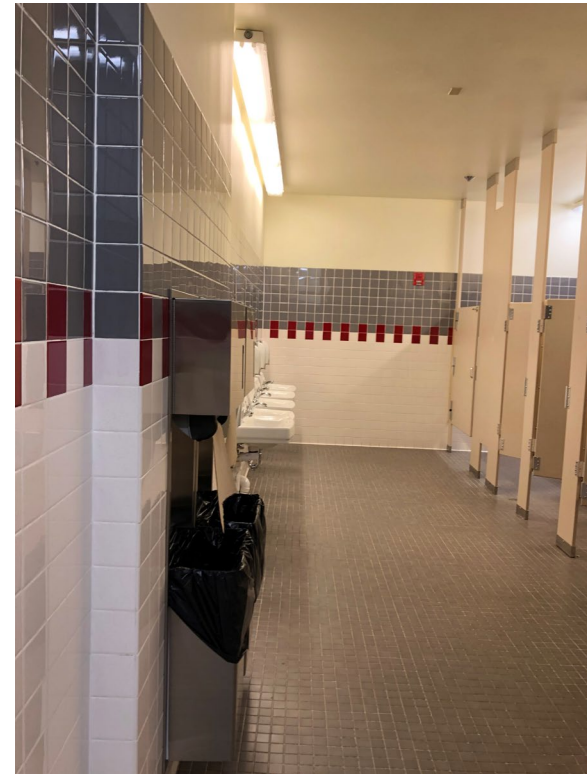


Floyd Dryden

Classroom



Bathroom



Floyd Dryden Commons

Potential Chambers



Other opportunities we are not talking about right now...

- Moving building maintenance into Marie Drake and demoing Mt. Jumbo for housing
- Demoing Marie Drake (\$4M)- Parking!
- Using Floyd Dryden or Marie Drake (or both!) for other community needs
 - Childcare/ AEYC
 - Juneau Animal Rescue
 - Community Center

Next steps

- Assembly provides feedback – today!
- Staff does more homework to answer questions @ April 15 COW
- Initiate a public process around possible community facilities at Floyd Dryden and Marie Drake @ April 15 PWFC
- Schedule site visits: who is interested!?

Future of City Hall

Does City Hall need to remain Downtown or is the Assembly, and community, open to moving it to the Valley?

Does the Assembly want to continue exploring leasing property or should we figure out how to move into a JSD facility?