

LEGEND

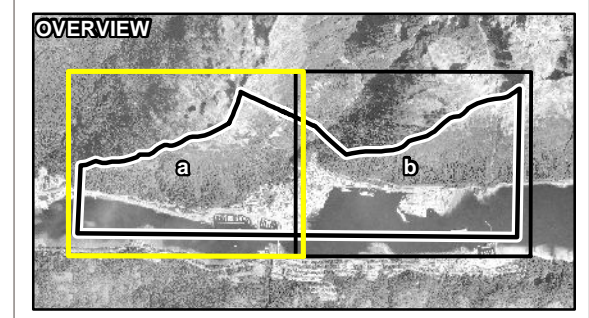
- ★ Location of Interest
- ▭ Study Area
- ⬭ Avalanche Path (estimated 300-year boundary)

Base Data

- ⬭ Index Contour (200 ft)
- ⬭ Intermediate Contour (50 ft)
- ▭ Land Parcel

AVALANCHE HAZARD DESIGNATION

- Low**
Return period greater than 300 years
OR
Impact pressures less than 20 lbs/ft² (1 kPa) with a return period greater than 30 years.
- Moderate**
Return period between 30 and 300 years;
AND
Impact pressure less than 600 lbs/ft² (30 kPa).
- Severe**
Return period less than 30 years;
AND/OR
Impact pressure greater than or equal to 600 lbs/ft² (30 kPa).



NOTES
 Low hazard designation not shown. Low hazard designation includes all areas not designated as "Moderate" or "Severe".
 Base data source:
 Land parcels provided by CBJ.
 Contours generated from 2013 LiDAR provided by CBJ.
 Background contours generated from 2012 LiDAR provided by CBJ.
 Primary imagery provided by CBJ, 2013.
 Background imagery provided by ESRI; Maxar (2020).

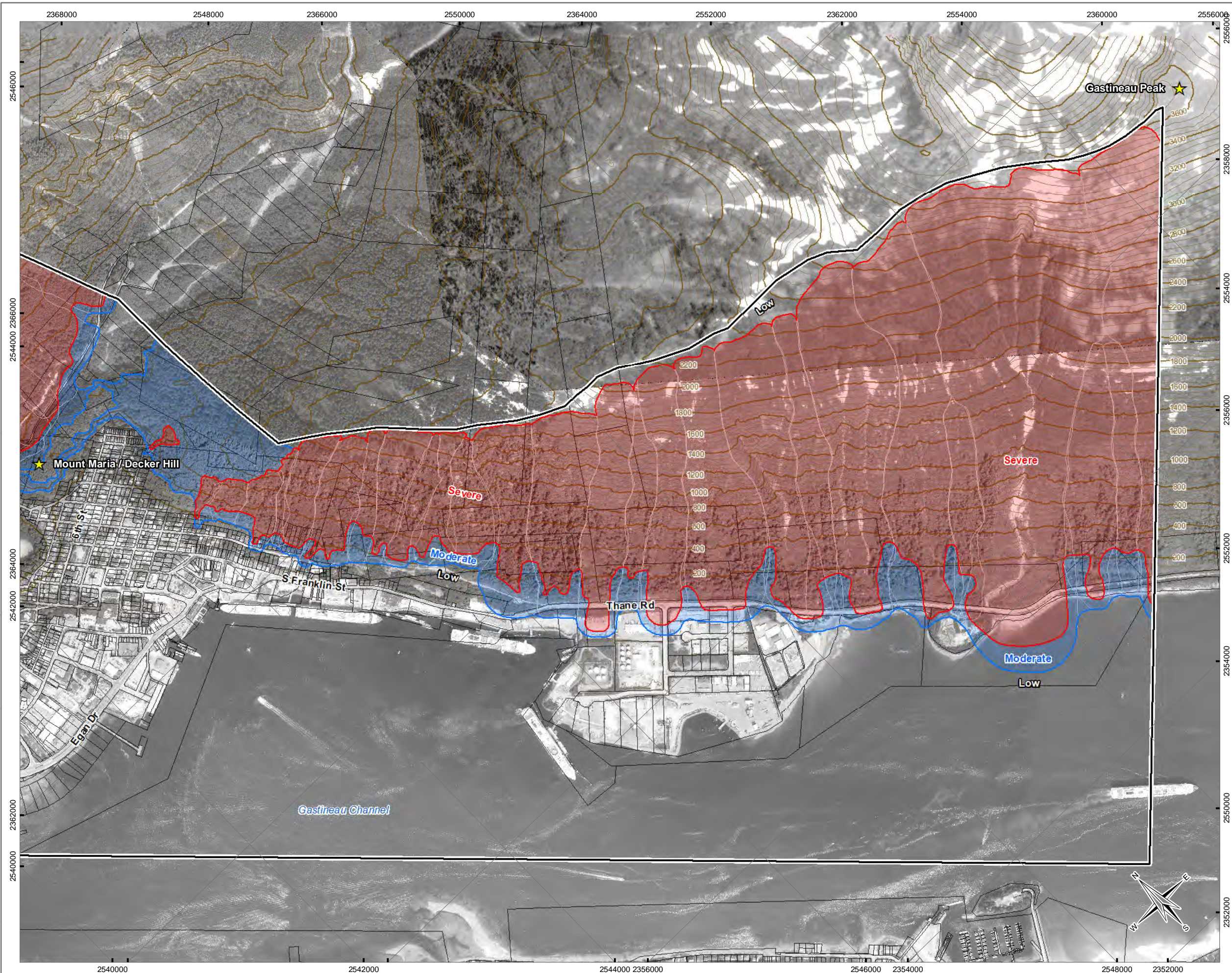
STATUS
ISSUED FOR USE

JUNEAU LANDSLIDE AND AVALANCHE ASSESSMENT

Avalanche Hazard Designation Mapping Overview

PROJECTION State Plane Alaska Zone 1 5001	DATUM NAD83	CLIENT CITY AND BOROUGH OF JUNEAU
Scale: 1:12,500 800 400 0 800 Feet		
FILE NO. 19-0017-JUN-002	OFFICE DAC-Rev	DATE April 27, 2022
DWN CA	CKD AJ	APVD AJ
REV 2	PROJECT NO. 19-0017-JUN	
		Figure 2.3a

C:\Users\chris\Dropbox (D&C)\Terra Tech - Juneau - 19-0017-JUN\Maps\GIS Data\City of Juneau_FIG2-3_Av Designation_Overview_20220420.mxd modified 2022-04-27 by chris



LEGEND

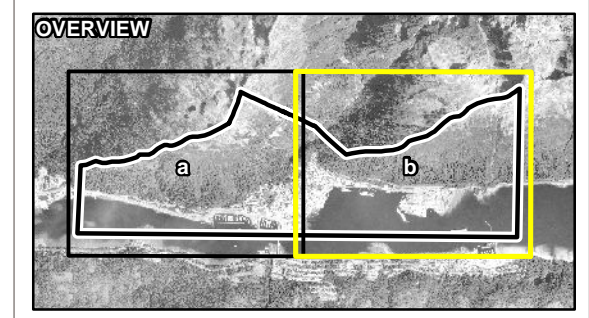
- ★ Location of Interest
- ▭ Study Area
- ⬭ Avalanche Path (estimated 300-year boundary)

Base Data

- ⬭ Index Contour (200 ft)
- ⬭ Intermediate Contour (50 ft)
- ▭ Land Parcel

AVALANCHE HAZARD DESIGNATION

- Low**
Return period greater than 300 years
OR
Impact pressures less than 20 lbs/ft² (1 kPa) with a return period greater than 30 years.
- Moderate**
Return period between 30 and 300 years;
AND
Impact pressure less than 600 lbs/ft² (30 kPa).
- Severe**
Return period less than 30 years;
AND/OR
Impact pressure greater than or equal to 600 lbs/ft² (30 kPa).



NOTES
 Low hazard designation not shown. Low hazard designation includes all areas not designated as "Moderate" or "Severe".
 Base data source:
 Land parcels provided by CBJ.
 Contours generated from 2013 LiDAR provided by CBJ.
 Background contours generated from 2012 LiDAR provided by CBJ.
 Primary imagery provided by CBJ, 2013.
 Background imagery provided by ESRI; Maxar (2020).

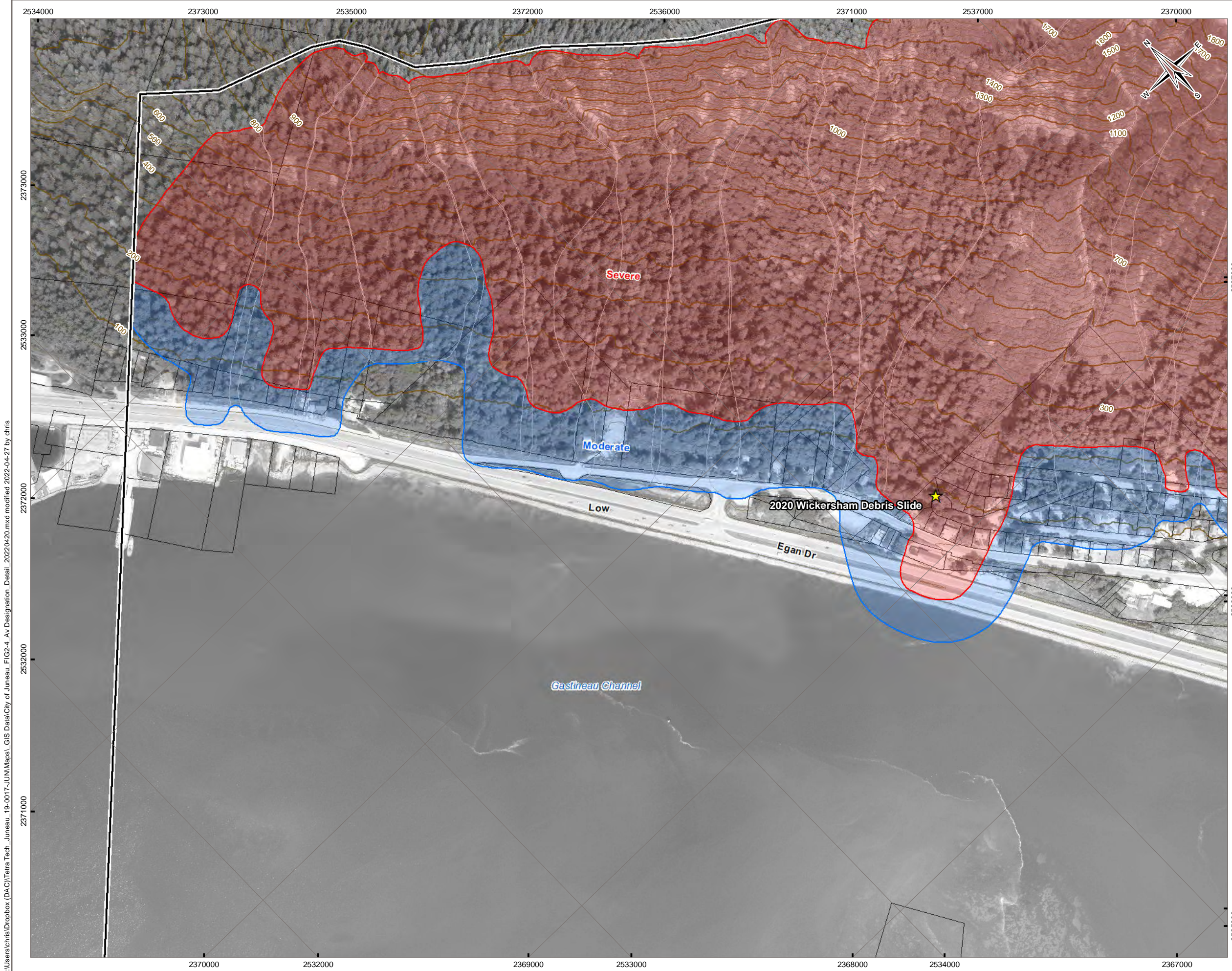
STATUS
ISSUED FOR USE

JUNEAU LANDSLIDE AND AVALANCHE ASSESSMENT

Avalanche Hazard Designation Mapping Overview

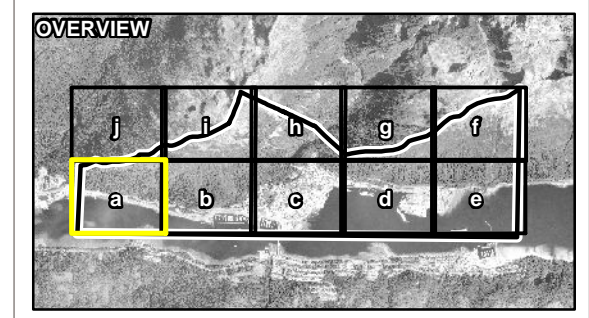
PROJECTION State Plane Alaska Zone 1 5001	DATUM NAD83	CLIENT CITY AND BOROUGH OF JUNEAU ALASKA
Scale: 1:12,500 800 400 0 800 Feet		DYNAMIC
FILE NO. 19-0017-JUN-002	Figure 2.3b	
OFFICE DAC-Rev	DWN CA	CKD AJ
APVD AJ	REV 2	
DATE April 27, 2022	PROJECT NO. 19-0017-JUN	

C:\Users\chris\Dropbox (D&C)\Terra Tech - Juneau - 19-0017-JUN\Maps\GIS Data\City of Juneau - FIG2-3 - Av Designation - Overview - 2022-04-27 by chris



LEGEND

- Location of Interest
- Study Area
- Avalanche Path (estimated 300-year boundary)
- Base Data**
 - Index Contour (100 ft)
 - Intermediate Contour (25 ft)
 - Land Parcel
- AVALANCHE HAZARD DESIGNATION**
 - Low**
Return period greater than 300 years
OR
Impact pressures less than 20 lbs/ft² (1 kPa) with a return period greater than 30 years.
 - Moderate**
Return period between 30 and 300 years;
AND
Impact pressure less than 600 lbs/ft² (30 kPa).
 - Severe**
Return period less than 30 years;
AND/OR
Impact pressure greater than or equal to 600 lbs/ft² (30 kPa).



NOTES
 Low hazard designation not shown. Low hazard designation includes all areas not designated as "Moderate" or "Severe".
 Base data source:
 Land parcels provided by CBJ.
 Contours generated from 2013 LiDAR provided by CBJ.
 Background contours generated from 2012 LiDAR provided by CBJ.
 Primary imagery provided by CBJ, 2013.
 Background imagery provided by ESRI; Maxar (2020).

STATUS
ISSUED FOR USE

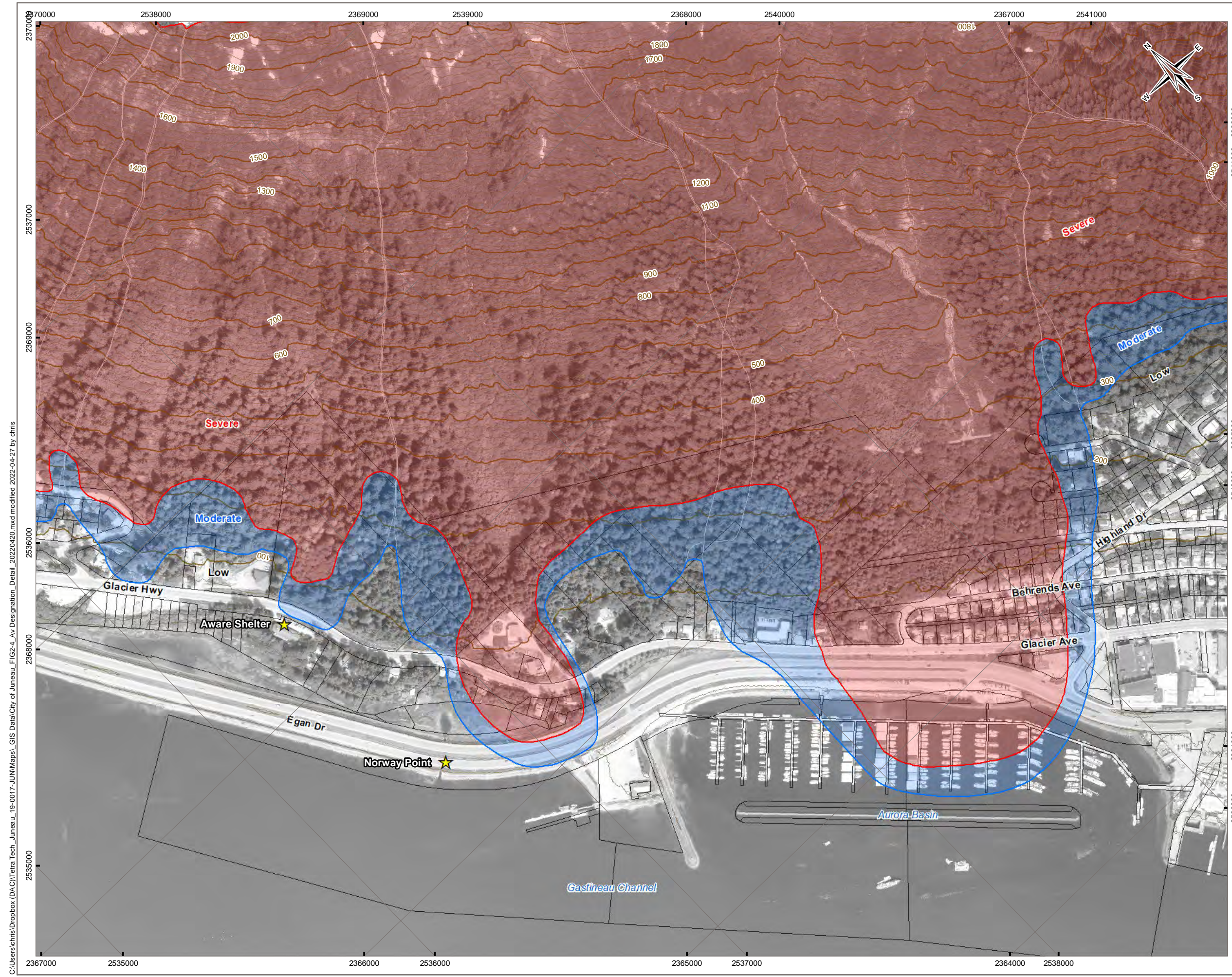
JUNEAU LANDSLIDE AND AVALANCHE ASSESSMENT

Avalanche Hazard Designation Mapping Detail

PROJECTION State Plane Alaska Zone 1 5001	DATUM NAD83	CLIENT CITY AND BOROUGH OF JUNEAU
Scale: 1:5,000 300 150 0 300 Feet		DYNAMIC
FILE NO. 19-0017-JUN-002	OFFICE DAC-Rev	DATE April 27, 2022
DWN CA	CKD AJ	APVD AJ
REV 2	PROJECT NO. 19-0017-JUN	

Figure 2.4a

C:\Users\chris\Dropbox (D&C)\Terra Tech - Juneau - 19-0017-JUN\Maps\GIS Data\City of Juneau - FIG2-4 - Av Designation - Detail_20220420.mxd modified 2022-04-27 by chris



LEGEND

- ★ Location of Interest
- Study Area
- Avalanche Path (estimated 300-year boundary)

Base Data

- Index Contour (100 ft)
- Intermediate Contour (25 ft)
- Land Parcel

AVALANCHE HAZARD DESIGNATION

Low
Return period greater than 300 years
OR
Impact pressures less than 20 lbs/ft² (1 kPa) with a return period greater than 30 years.

Moderate
Return period between 30 and 300 years;
AND
Impact pressure less than 600 lbs/ft² (30 kPa).

Severe
Return period less than 30 years;
AND/OR
Impact pressure greater than or equal to 600 lbs/ft² (30 kPa).

OVERVIEW

NOTES
Low hazard designation not shown. Low hazard designation includes all areas not designated as "Moderate" or "Severe".
Base data source:
Land parcels provided by CBJ.
Contours generated from 2013 LiDAR provided by CBJ.
Background contours generated from 2012 LiDAR provided by CBJ.
Primary imagery provided by CBJ, 2013.
Background imagery provided by ESRI; Maxar (2020).

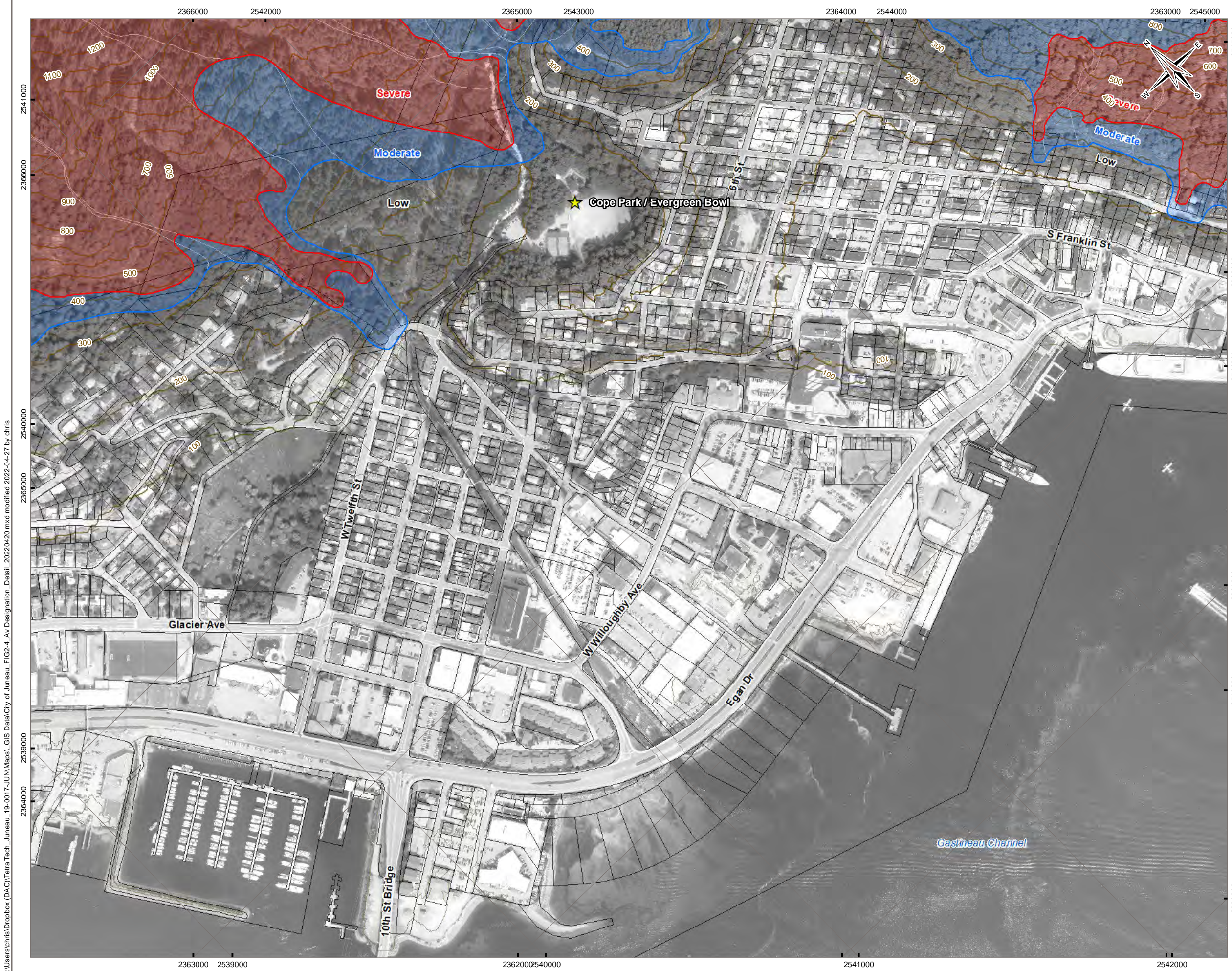
STATUS
ISSUED FOR USE

**JUNEAU LANDSLIDE AND
AVALANCHE ASSESSMENT**

**Avalanche Hazard Designation Mapping
Detail**

PROJECTION State Plane Alaska Zone 1 5001	DATUM NAD83	CLIENT CITY AND BOROUGH OF JUNEAU ALASKA
Scale: 1:5,000 300 150 0 300 Feet		DYNAMIC
FILE NO. 19-0017-JUN-002	Figure 2.4b	
OFFICE DAC-Rev	DWN CA	CKD AJ
APVD AJ	REV 2	
DATE April 27, 2022	PROJECT NO. 19-0017-JUN	

C:\Users\chris\Dropbox (DAC)\Terra Tech - Juneau - 19-0017-JUN\Maps\GIS Data\City of Juneau_FIG2-4_Av Designation_Detail_20220420.mxd modified 2022-04-27 by chris



C:\Users\chris\Dropbox (DAC)\Terra Tech - Juneau - 19-0017-JUN\Maps - GIS Data\City of Juneau - FIG2-4 - Av Designation - Detail - 20220420.mxd modified 2022-04-27 by chris

LEGEND

- ★ Location of Interest
- Study Area
- Avalanche Path (estimated 300-year boundary)

Base Data

- Index Contour (100 ft)
- Intermediate Contour (25 ft)
- Land Parcel

AVALANCHE HAZARD DESIGNATION

Low
 Return period greater than 300 years
 OR
 Impact pressures less than 20 lbs/ft² (1 kPa) with a return period greater than 30 years.

Moderate
 Return period between 30 and 300 years;
 AND
 Impact pressure less than 600 lbs/ft² (30 kPa).

Severe
 Return period less than 30 years;
 AND/OR
 Impact pressure greater than or equal to 600 lbs/ft² (30 kPa).

OVERVIEW

NOTES
 Low hazard designation not shown. Low hazard designation includes all areas not designated as "Moderate" or "Severe".
 Base data source:
 Land parcels provided by CBJ.
 Contours generated from 2013 LiDAR provided by CBJ.
 Background contours generated from 2012 LiDAR provided by CBJ.
 Primary imagery provided by CBJ, 2013.
 Background imagery provided by ESRI; Maxar (2020).

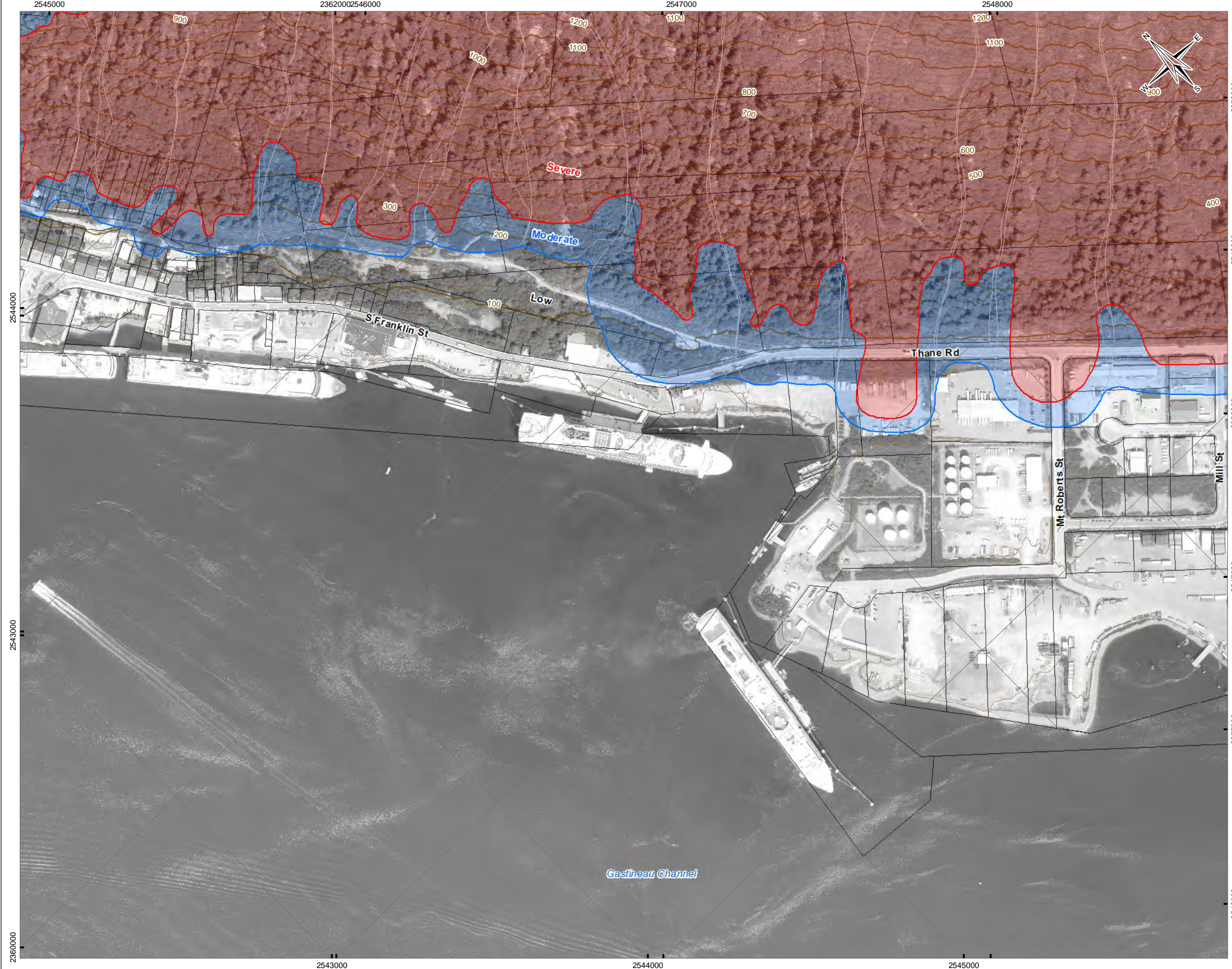
STATUS
ISSUED FOR USE

JUNEAU LANDSLIDE AND
 AVALANCHE ASSESSMENT

Avalanche Hazard Designation Mapping
Detail

PROJECTION State Plane Alaska Zone 1 5001	DATUM NAD83	CLIENT
Scale: 1:5,000 		
FILE NO. 19-0017-JUN-002	OFFICE DAC-Rev	DATE April 27, 2022
DWN CA	CKD AJ	APVD AJ
REV 2	PROJECT NO. 19-0017-JUN	

Figure 2.4c



LEGEND

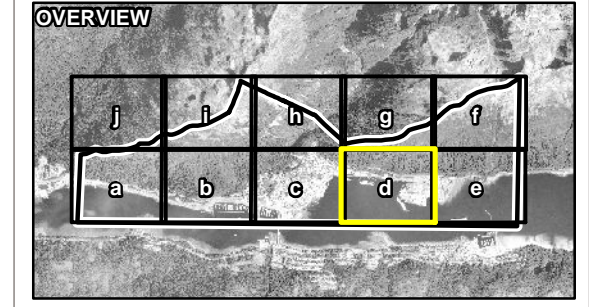
- ★ Location of Interest
- ▭ Study Area
- ⬭ Avalanche Path (estimated 300-year boundary)

Base Data

- Index Contour (100 ft)
- Intermediate Contour (25 ft)
- ▭ Land Parcel

AVALANCHE HAZARD DESIGNATION

- Low**
Return period greater than 300 years
OR
Impact pressures less than 20 lbs/ft² (1 kPa) with a return period greater than 30 years.
- Moderate**
Return period between 30 and 300 years;
AND
Impact pressure less than 600 lbs/ft² (30 kPa).
- Severe**
Return period less than 30 years;
AND/OR
Impact pressure greater than or equal to 600 lbs/ft² (30 kPa).



NOTES

Low hazard designation not shown. Low hazard designation includes all areas not designated as "Moderate" or "Severe".

Base data source:
Land parcels provided by CBJ.
Contours generated from 2013 LiDAR provided by CBJ.
Background contours generated from 2012 LiDAR provided by CBJ.
Primary imagery provided by CBJ, 2013.
Background imagery provided by ESRI; Maxar (2020).

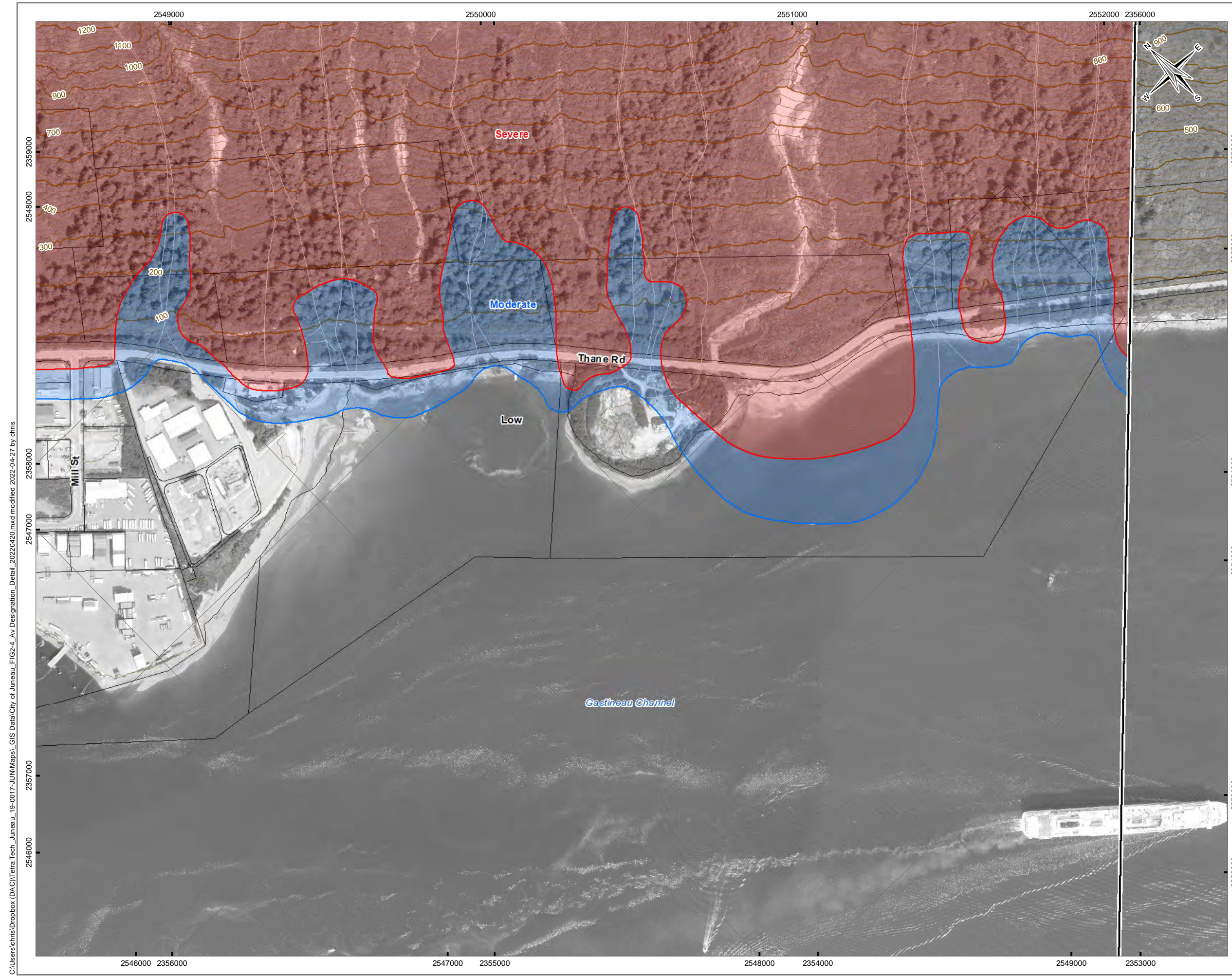
STATUS
ISSUED FOR USE

**JUNEAU LANDSLIDE AND
AVALANCHE ASSESSMENT**

**Avalanche Hazard Designation Mapping
Detail**

PROJECTION State Plane Alaska Zone 1 5001	DATUM NAD83	CLIENT 			
Scale: 1:5,000 300 150 0 300 Feet					
FILE NO. 19-0017-JUN-002					
OFFICE DAC-Rev	DWN CA		CKD AJ	APVD AJ	REV 2
DATE April 27, 2022	PROJECT NO. 19-0017-JUN		Figure 2.4d		

C:\Users\chris\Dropbox (D&C)\Terra Tech - Juneau - 19-0017-JUN\Maps\GIS Data\City of Juneau_FIG2-4_Av Designation_Detail_20220420.mxd modified 2022-04-27 by chris



C:\Users\chris\Dropbox (D&C)\Terra Tech - Juneau - 19-0017-JUN\Maps\CIS Data\CIS Data City of Juneau - FIG2-4 - Av Designation - Detail - 20220420.mxd modified 2022-04-27 by chris

LEGEND

- ★ Location of Interest
- Study Area
- Avalanche Path (estimated 300-year boundary)

Base Data

- Index Contour (100 ft)
- Intermediate Contour (25 ft)
- Land Parcel

AVALANCHE HAZARD DESIGNATION

- Low**
Return period greater than 300 years
OR
Impact pressures less than 20 lbs/ft² (1 kPa) with a return period greater than 30 years.
- Moderate**
Return period between 30 and 300 years;
AND
Impact pressure less than 600 lbs/ft² (30 kPa).
- Severe**
Return period less than 30 years;
AND/OR
Impact pressure greater than or equal to 600 lbs/ft² (30 kPa).

OVERVIEW

NOTES

Low hazard designation not shown. Low hazard designation includes all areas not designated as "Moderate" or "Severe".

Base data source:
Land parcels provided by CBJ.
Contours generated from 2013 LiDAR provided by CBJ.
Background contours generated from 2012 LiDAR provided by CBJ.
Primary imagery provided by CBJ, 2013.
Background imagery provided by ESRI; Maxar (2020).

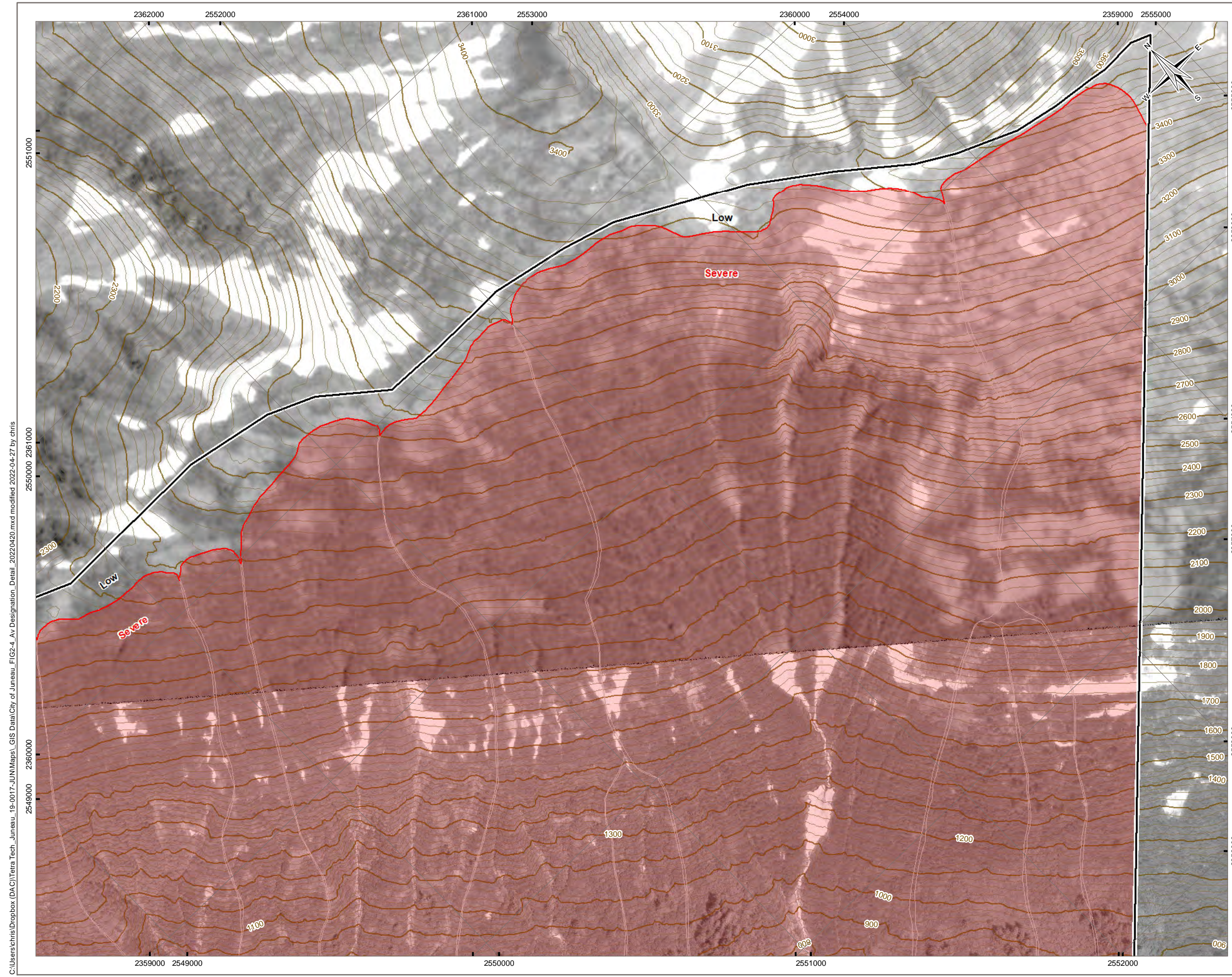
STATUS
ISSUED FOR USE

JUNEAU LANDSLIDE AND
 AVALANCHE ASSESSMENT

Avalanche Hazard Designation Mapping
Detail

PROJECTION State Plane Alaska Zone 1 5001	DATUM NAD83	CLIENT
Scale: 1:5,000 		
FILE NO. 19-0017-JUN-002		
OFFICE DAC-Rev	DWN CA	CKD AJ
APVD AJ	REV 2	
DATE April 27, 2022	PROJECT NO. 19-0017-JUN	

Figure 2.4e



LEGEND

- ★ Location of Interest
- ▭ Study Area
- ☁ Avalanche Path (estimated 300-year boundary)

Base Data

- Index Contour (100 ft)
- Intermediate Contour (25 ft)
- ▭ Land Parcel

AVALANCHE HAZARD DESIGNATION

- Low**
Return period greater than 300 years
OR
Impact pressures less than 20 lbs/ft² (1 kPa) with a return period greater than 30 years.
- Moderate**
Return period between 30 and 300 years;
AND
Impact pressure less than 600 lbs/ft² (30 kPa).
- Severe**
Return period less than 30 years;
AND/OR
Impact pressure greater than or equal to 600 lbs/ft² (30 kPa).

OVERVIEW

NOTES

Low hazard designation not shown. Low hazard designation includes all areas not designated as "Moderate" or "Severe".
 Base data source:
 Land parcels provided by CBJ.
 Contours generated from 2013 LiDAR provided by CBJ.
 Background contours generated from 2012 LiDAR provided by CBJ.
 Primary imagery provided by CBJ, 2013.
 Background imagery provided by ESRI; Maxar (2020).

STATUS
ISSUED FOR USE

**JUNEAU LANDSLIDE AND
AVALANCHE ASSESSMENT**

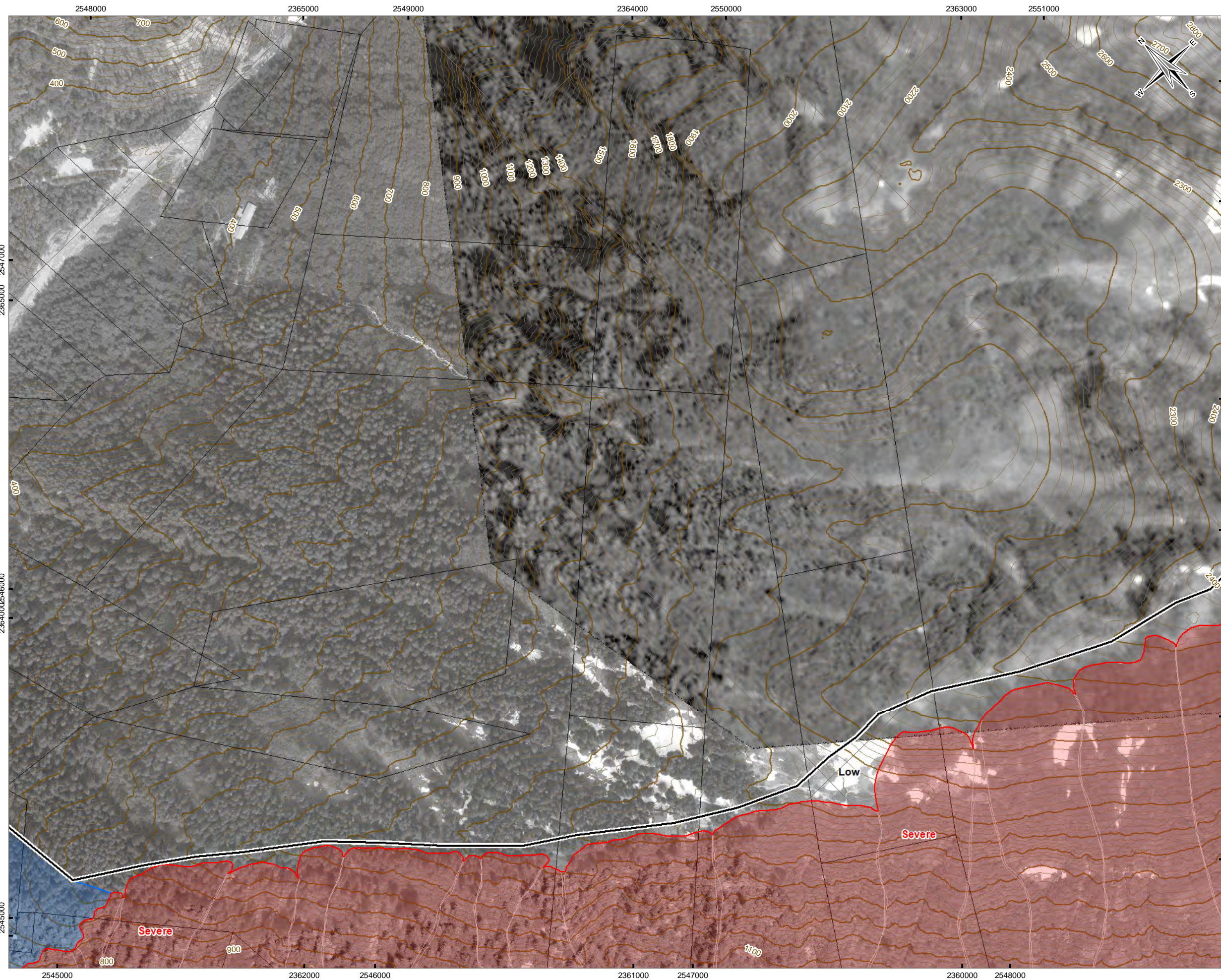
**Avalanche Hazard Designation Mapping
Detail**

PROJECTION State Plane Alaska Zone 1 5001	DATUM NAD83	CLIENT
Scale: 1:5,000 300 150 0 300 Feet		
FILE NO. 19-0017-JUN-002	OFFICE DAC-Rev	DWN CA
DATE April 27, 2022	CKD AJ	APVD AJ
REV 2	PROJECT NO. 19-0017-JUN	

Figure 2.4f

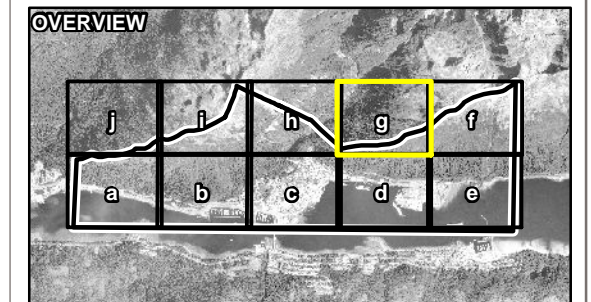
C:\Users\chris\Dropbox (DAC)\Terra Tech - Juneau - 19-0017-JUN\Maps - GIS Data\City of Juneau - FIG2-f - Av Designation - Detail - 20220420.mxd modified 2022-04-27 by chris

C:\Users\chris\Dropbox (D:\C)\Terra Tech - Juneau - 19-0017-JUN\Maps\GIS Data\City of Juneau - FIG2-4 - Av Designation - Detail - 20220420.mxd modified 2022-04-27 by chris



LEGEND

- Location of Interest
- Study Area
- Avalanche Path (estimated 300-year boundary)
- Base Data**
 - Index Contour (100 ft)
 - Intermediate Contour (25 ft)
 - Land Parcel
- AVALANCHE HAZARD DESIGNATION**
 - Low**
Return period greater than 300 years
OR
Impact pressures less than 20 lbs/ft² (1 kPa) with a return period greater than 30 years.
 - Moderate**
Return period between 30 and 300 years;
AND
Impact pressure less than 600 lbs/ft² (30 kPa).
 - Severe**
Return period less than 30 years;
AND/OR
Impact pressure greater than or equal to 600 lbs/ft² (30 kPa).



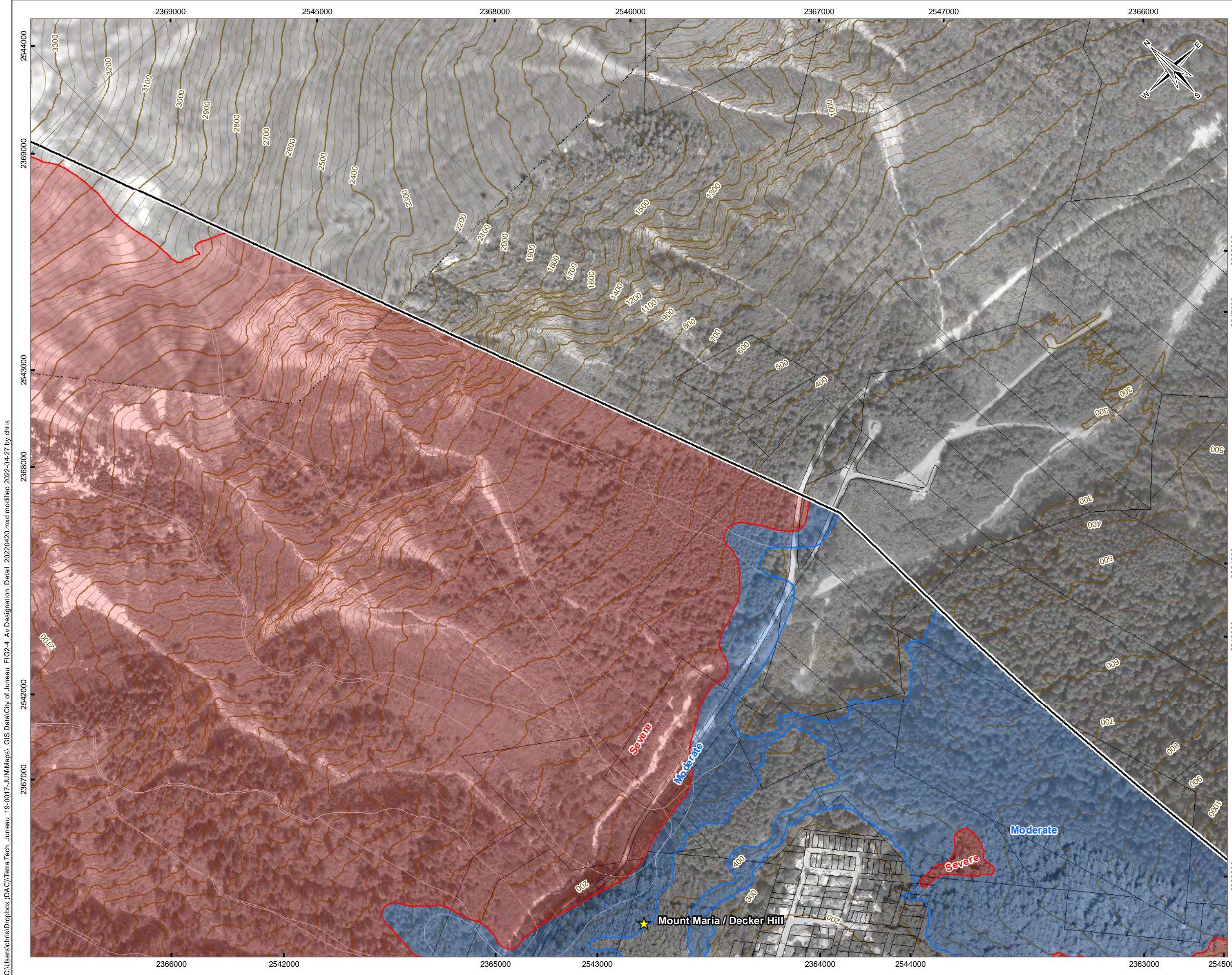
NOTES
 Low hazard designation not shown. Low hazard designation includes all areas not designated as "Moderate" or "Severe".
 Base data source:
 Land parcels provided by CBJ.
 Contours generated from 2013 LiDAR provided by CBJ.
 Background contours generated from 2012 LiDAR provided by CBJ.
 Primary imagery provided by CBJ, 2013.
 Background imagery provided by ESRI; Maxar (2020).

STATUS
ISSUED FOR USE

JUNEAU LANDSLIDE AND AVALANCHE ASSESSMENT

Avalanche Hazard Designation Mapping Detail

PROJECTION State Plane Alaska Zone 1 5001	DATUM NAD83	CLIENT
Scale: 1:5,000 300 150 0 300 Feet		
FILE NO. 19-0017-JUN-002	Figure 2.4g	
OFFICE DAC-Rev	DWN CA	CKD AJ
APVD AJ	REV 2	
DATE April 27, 2022	PROJECT NO. 19-0017-JUN	

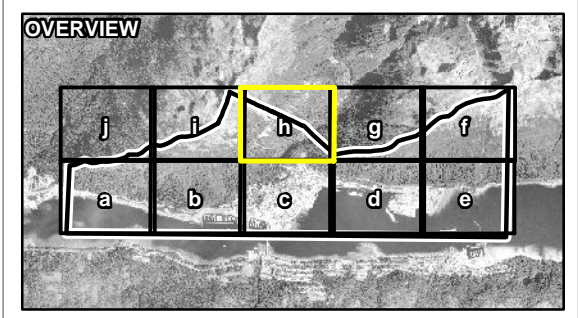


LEGEND

- Location of Interest
- Study Area
- Avalanche Path (estimated 300-year boundary)
- Base Data**
- Index Contour (100 ft)
- Intermediate Contour (25 ft)
- Land Parcel

AVALANCHE HAZARD DESIGNATION

- Low**
Return period greater than 300 years
OR
Impact pressures less than 20 lbs/ft² (1 kPa) with a return period greater than 30 years.
- Moderate**
Return period between 30 and 300 years;
AND
Impact pressure less than 600 lbs/ft² (30 kPa).
- Severe**
Return period less than 30 years;
AND/OR
Impact pressure greater than or equal to 600 lbs/ft² (30 kPa).



NOTES
 Low hazard designation not shown. Low hazard designation includes all areas not designated as "Moderate" or "Severe".
 Base data source:
 Land parcels provided by CBJ.
 Contours generated from 2013 LiDAR provided by CBJ.
 Background contours generated from 2012 LiDAR provided by CBJ.
 Primary imagery provided by CBJ, 2013.
 Background imagery provided by ESRI; Maxar (2020).

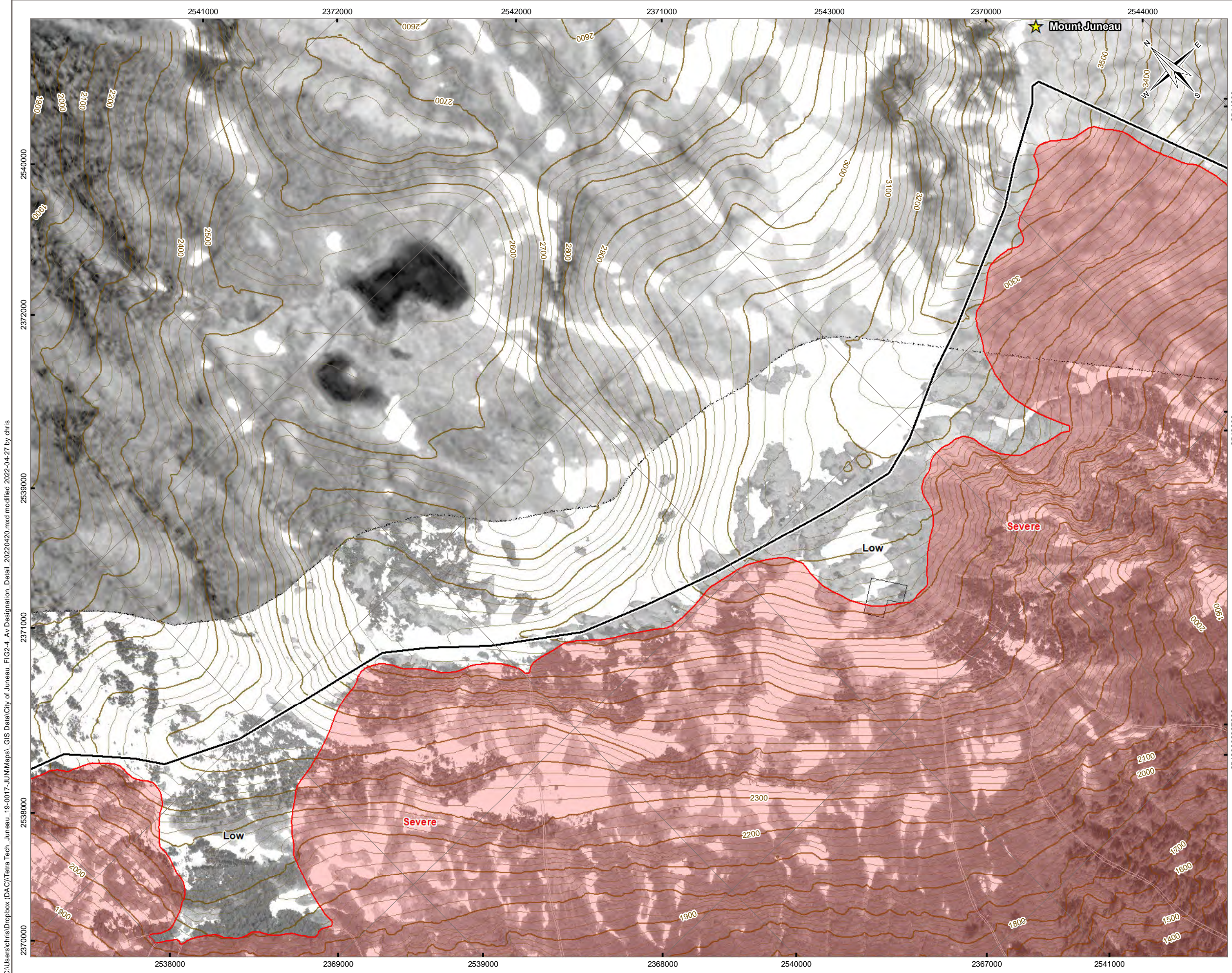
STATUS
ISSUED FOR USE

**JUNEAU LANDSLIDE AND
AVALANCHE ASSESSMENT**

**Avalanche Hazard Designation Mapping
Detail**

PROJECTION State Plane Alaska Zone 1 5001	DATUM NAD83	CLIENT
Scale: 1:5,000 		
FILE NO. 19-0017-JUN-002	Figure 2.4h	
OFFICE DAC-Rev	DWN CA	CKD AJ
DATE April 27, 2022	APVD AJ	REV 2
PROJECT NO. 19-0017-JUN		

C:\Users\chris\Dropbox (D&C)\Terra Tech - Juneau - 19-0017-JUN\Maps\CIS Data\City of Juneau_FIG2-4_Av Designation_Detail_20220420.mxd modified 2022-04-27 by chris



LEGEND

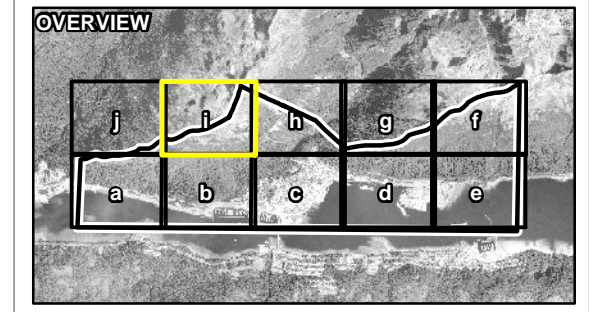
- ★ Location of Interest
- ▭ Study Area
- ⬭ Avalanche Path (estimated 300-year boundary)

Base Data

- Index Contour (100 ft)
- Intermediate Contour (25 ft)
- ▭ Land Parcel

AVALANCHE HAZARD DESIGNATION

- Low**
Return period greater than 300 years
OR
Impact pressures less than 20 lbs/ft² (1 kPa) with a return period greater than 30 years.
- Moderate**
Return period between 30 and 300 years;
AND
Impact pressure less than 600 lbs/ft² (30 kPa).
- Severe**
Return period less than 30 years;
AND/OR
Impact pressure greater than or equal to 600 lbs/ft² (30 kPa).



NOTES
 Low hazard designation not shown. Low hazard designation includes all areas not designated as "Moderate" or "Severe".
 Base data source:
 Land parcels provided by CBJ.
 Contours generated from 2013 LiDAR provided by CBJ.
 Background contours generated from 2012 LiDAR provided by CBJ.
 Primary imagery provided by CBJ, 2013.
 Background imagery provided by ESRI; Maxar (2020).

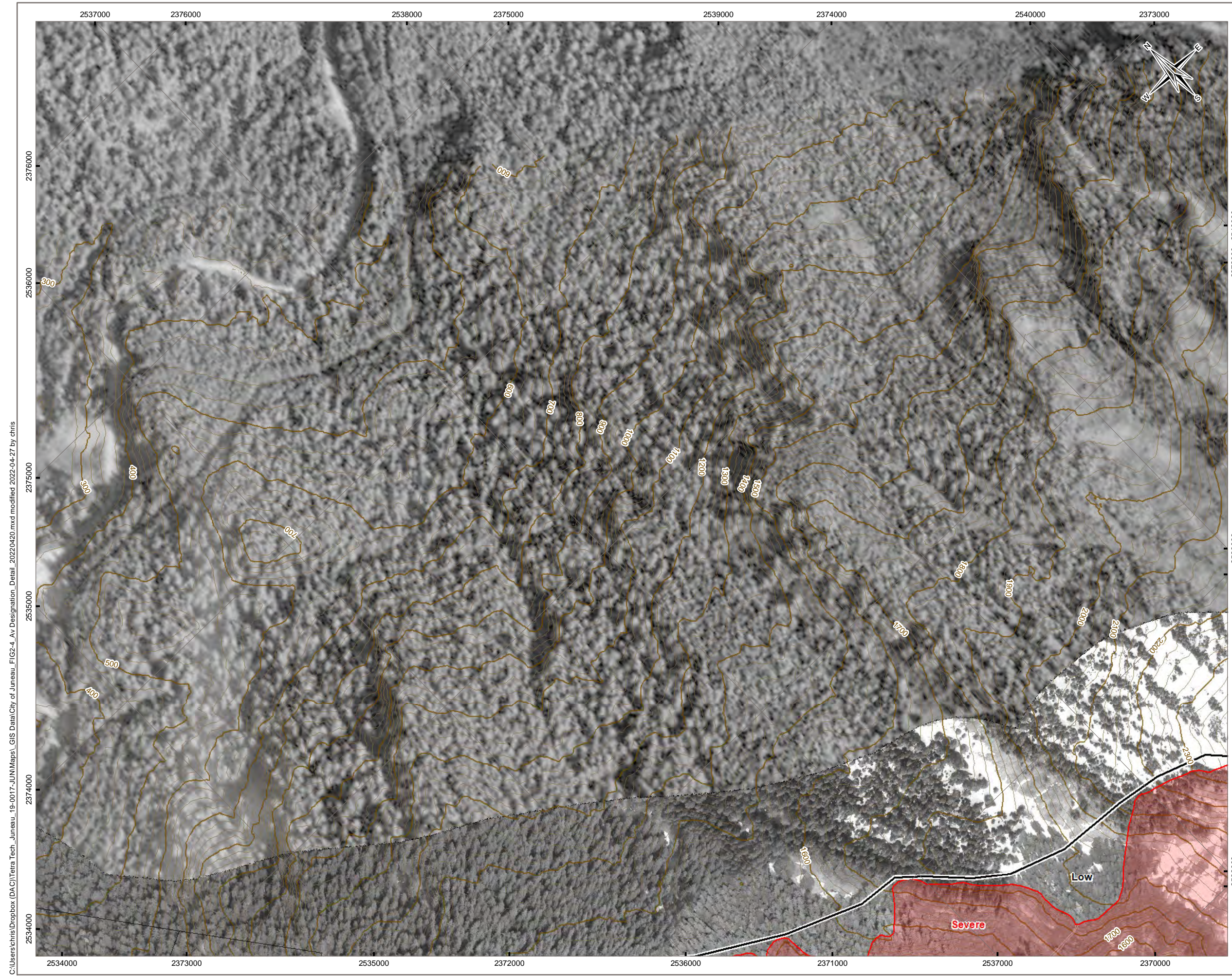
STATUS
ISSUED FOR USE

JUNEAU LANDSLIDE AND AVALANCHE ASSESSMENT

Avalanche Hazard Designation Mapping Detail

PROJECTION State Plane Alaska Zone 1 5001	DATUM NAD83	CLIENT
Scale: 1:5,000 300 150 0 300 Feet		
FILE NO. 19-0017-JUN-002	Figure 2.4i	
OFFICE DAC-Rev	DWN CA	CKD AJ
APVD AJ	REV 2	
DATE April 27, 2022	PROJECT NO. 19-0017-JUN	

C:\Users\chris\Dropbox (DAC)\Terra Tech - Juneau - 19-0017-JUN\Maps - GIS Data\City of Juneau - FIG2-4 - Av Designation - Detail - 20220420.mxd modified 2022-04-27 by chris



C:\Users\chris\Dropbox (DAC)\Terra Tech - Juneau - 19-0017-JUN\Maps\GIS Data\City of Juneau_FIG2-4_Av Designation_Detail_20220420.mxd modified 2022-04-27 by chris

LEGEND

- ★ Location of Interest
- Study Area
- Avalanche Path (estimated 300-year boundary)

Base Data

- Index Contour (100 ft)
- Intermediate Contour (25 ft)
- Land Parcel

AVALANCHE HAZARD DESIGNATION

- Low**
Return period greater than 300 years
OR
Impact pressures less than 20 lbs/ft² (1 kPa) with a return period greater than 30 years.
- Moderate**
Return period between 30 and 300 years;
AND
Impact pressure less than 600 lbs/ft² (30 kPa).
- Severe**
Return period less than 30 years;
AND/OR
Impact pressure greater than or equal to 600 lbs/ft² (30 kPa).

OVERVIEW

NOTES

Low hazard designation not shown. Low hazard designation includes all areas not designated as "Moderate" or "Severe".

Base data source:
Land parcels provided by CBJ.
Contours generated from 2013 LiDAR provided by CBJ.
Background contours generated from 2012 LiDAR provided by CBJ.
Primary imagery provided by CBJ, 2013.
Background imagery provided by ESRI; Maxar (2020).

STATUS
ISSUED FOR USE

**JUNEAU LANDSLIDE AND
AVALANCHE ASSESSMENT**

**Avalanche Hazard Designation Mapping
Detail**

PROJECTION State Plane Alaska Zone 1 5001	DATUM NAD83	CLIENT
Scale: 1:5,000 		
FILE NO. 19-0017-JUN-002		
OFFICE DAC-Rev	DWN CA	CKD AJ
APVD AJ	REV 2	
DATE April 27, 2022	PROJECT NO. 19-0017-JUN	

Figure 2.4j