

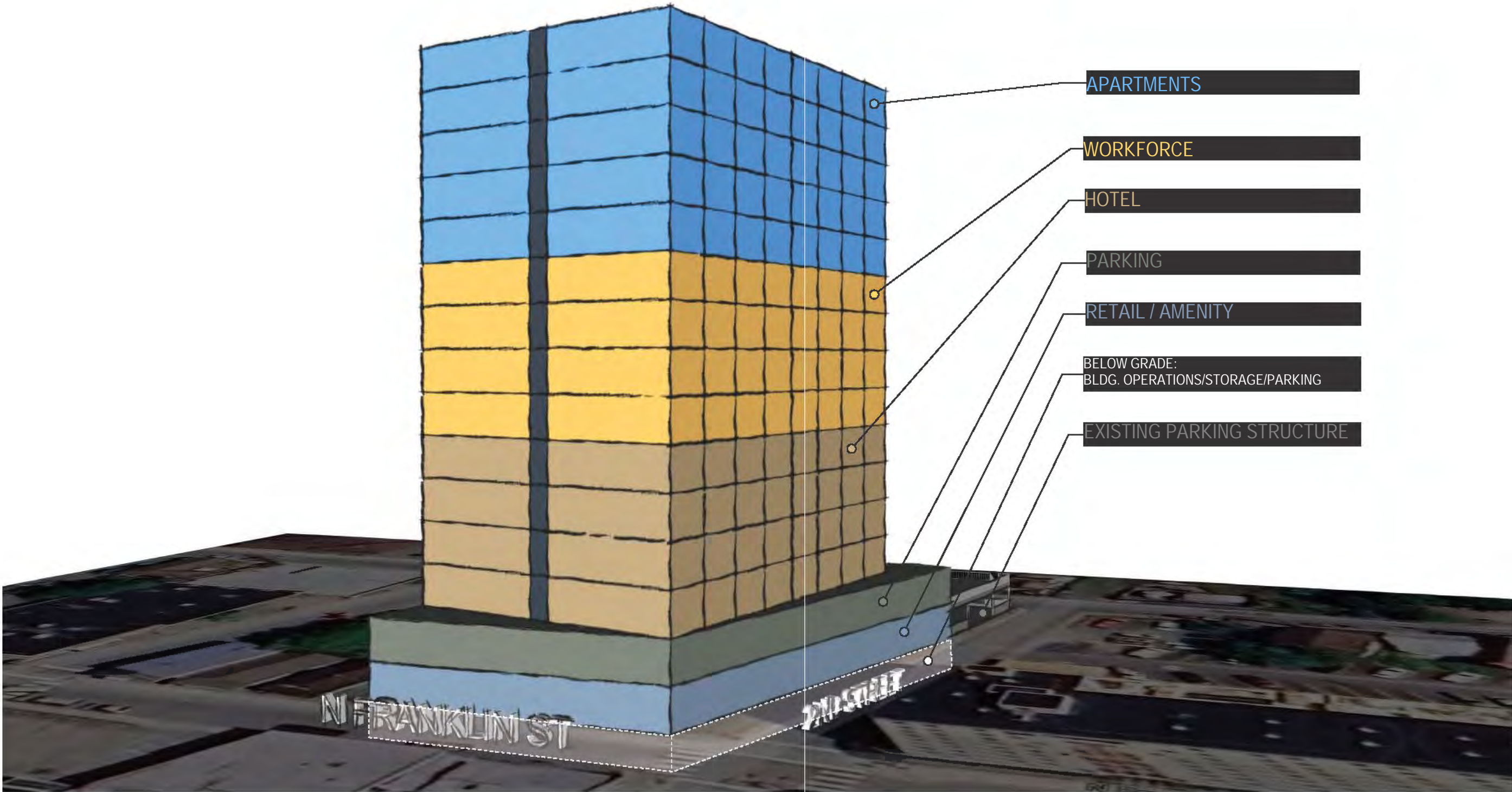
GREAT NORTHERN INN & RESIDENCES NORTHWIND ARCHITECTS

2ND STREET & N. FRANKLIN
JUNEAU, ALASKA



GREAT NORTHERN INN & RESIDENCES

MASSING STUDY



SITE MASSING

GREAT NORTHERN INN & RESIDENCES

SITE

SITE

- ZONE: MIXED USE (MU)
- SITE DIMENSIONS: 120'X100'
- MAX HEIGHT: NONE
- SETBACKS: NONE



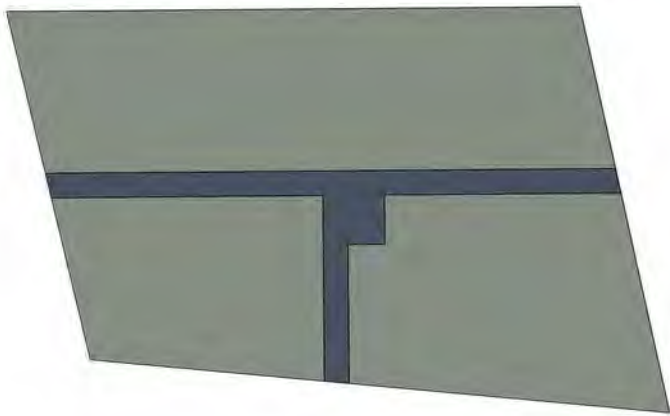
LEVELS 3-15

BASEMENT
LEVEL 1
LEVEL 2

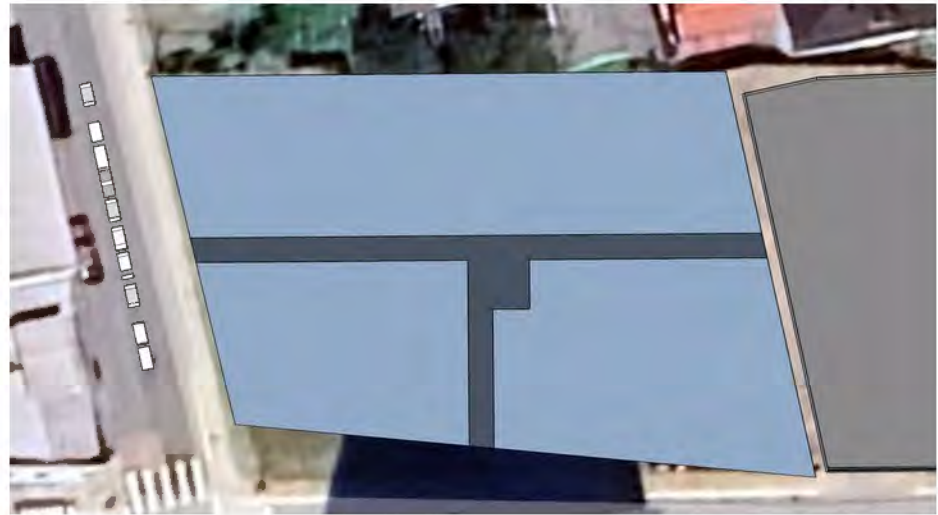
GREAT NORTHERN INN & RESIDENCES

PLAN DIAGRAM

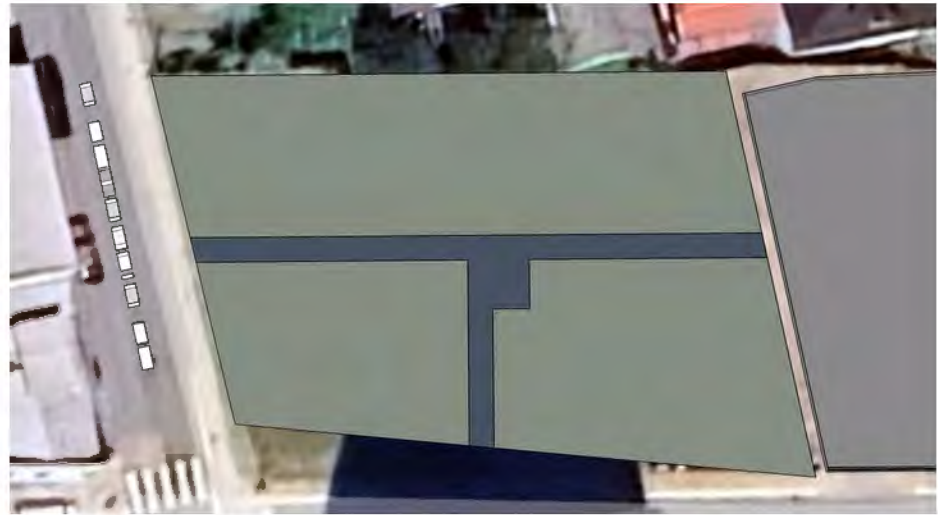
LEVEL BASEMENT: OPERATIONS /
STORAGE & PARKING



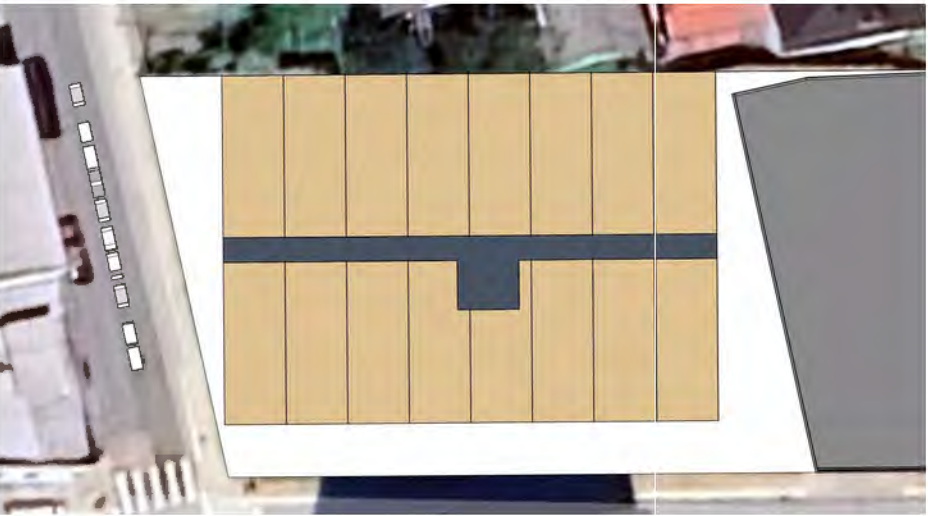
LEVEL 1: AMENITY & RETAIL



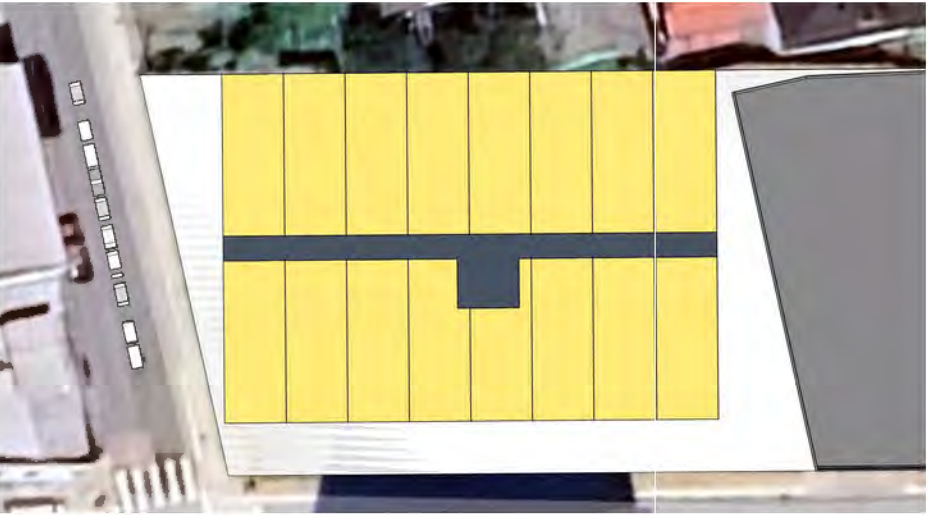
LEVEL 2: PARKING



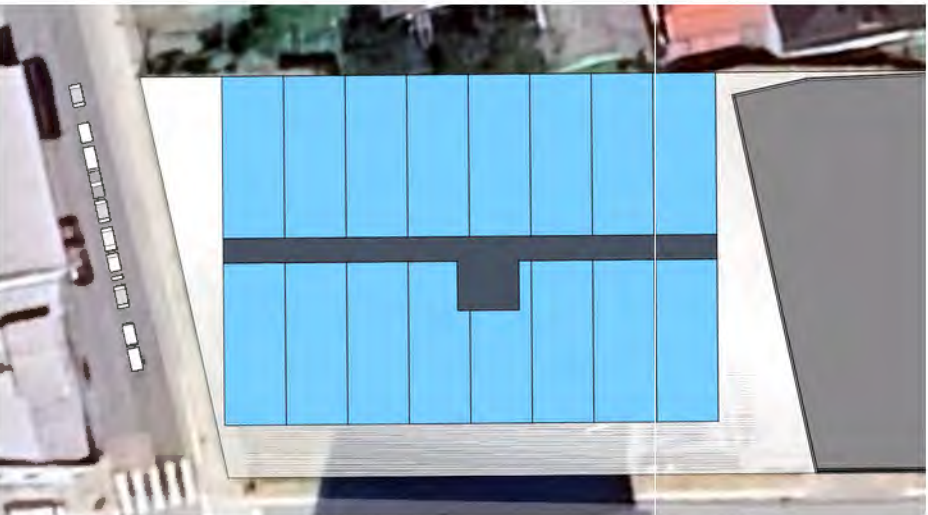
LEVEL 3-6: HOTEL



LEVEL 7-10: WORKFORCE HOUSING



LEVEL 11-15: APARTMENTS



TYPICAL UNIT

NOTE: DATA IS APPROXIMATE

AREA: 592.5 SF
DIMENSION: 15' X 39.5'
PER FLOOR TOTAL: 16
HOTEL UNIT TOTAL: 64
WORKFORCE UNITS: 64
APARTMENT UNITS: 80

TYPICAL FLOOR AREA: 10,200 SF
DIMENSIONS: 85' X 120'

GREAT NORTHERN INN & RESIDENCES
GROUND FLOOR AMENITY/RETAIL CONCEPT

