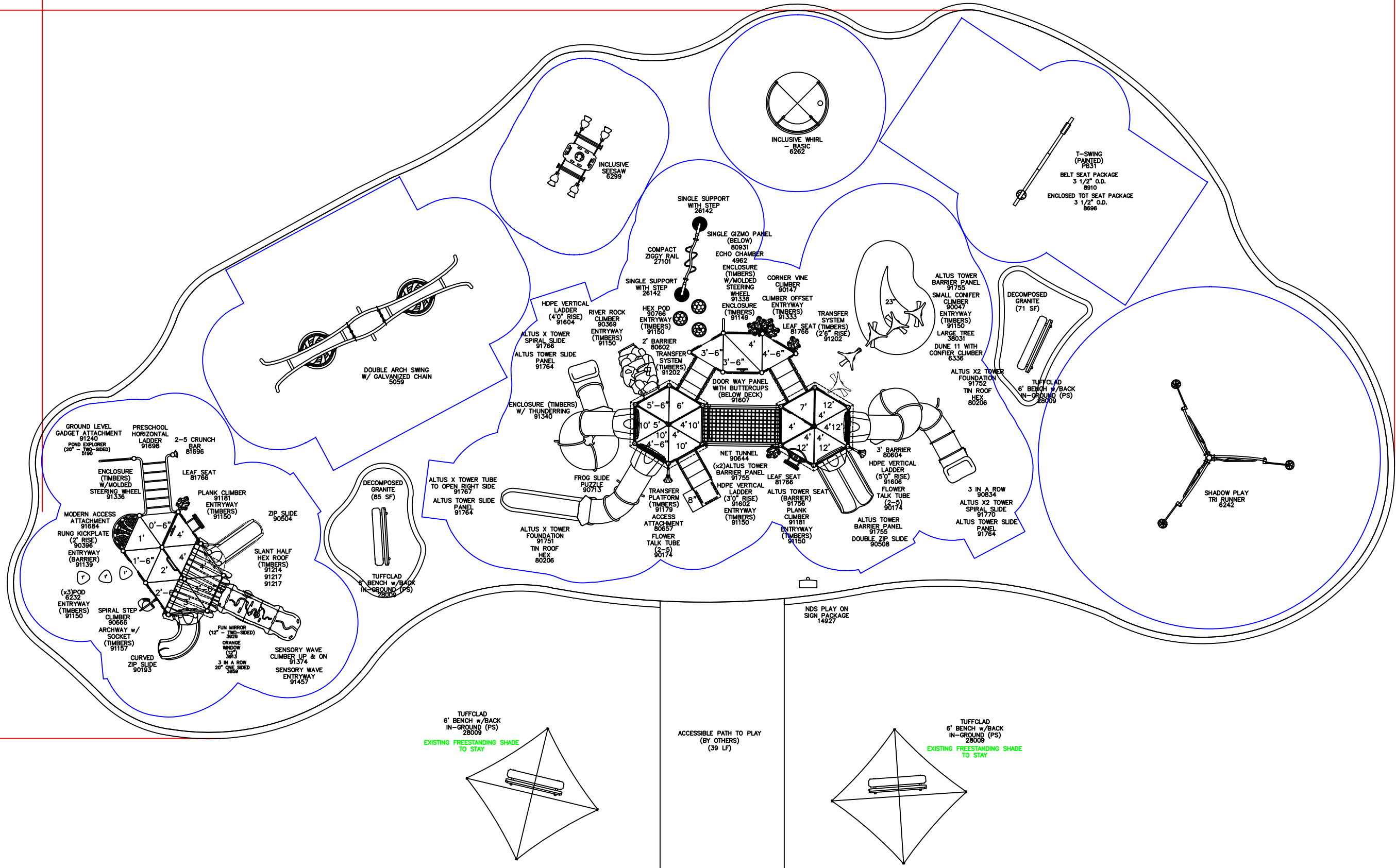
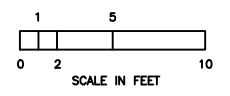


141'-7"

76'-4"



SURFACING		CURBING	
TYPE	PIP	TYPE	CNCR
SQ FT	6,991	LN FT	357
DEPTH	5.5"	HT	9.5"



150 PlayCore Drive SE
Fort Payne, AL 35967
www.gametime.com

City of Joshua
Joshua City Park (Revision 2)
Joshua, TX
Representative
Cunningham Recreation

This play equipment is recommended for children ages 2-5 & 5-12

Minimum Area Required:
Scale:
This drawing can be scaled only when in an 24" x 36" format

IMPORTANT: Soft resilient surfacing should be placed in the use zones of all equipment, as specified for each type of equipment, and at depths to meet the critical fall heights as specified by the U.S. consumer Product Safety Commission, ASTM standard F 1487 and Canadian Standard CAN/CSA-Z-614.

Drawn By:
TCV
Date:
10/4/2024
Drawing Name:
171901-01-03