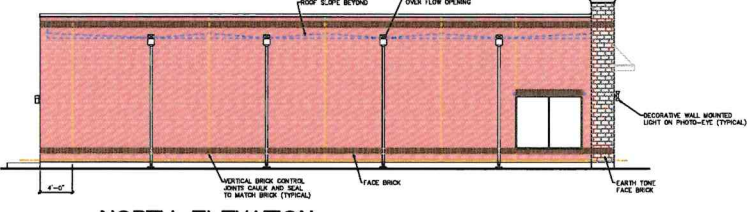
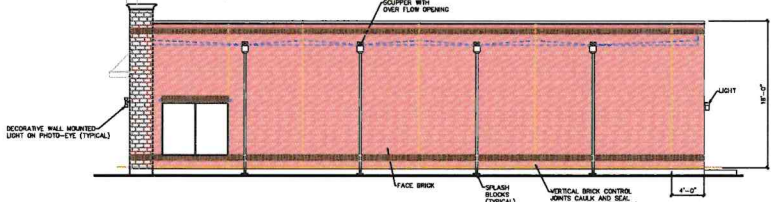


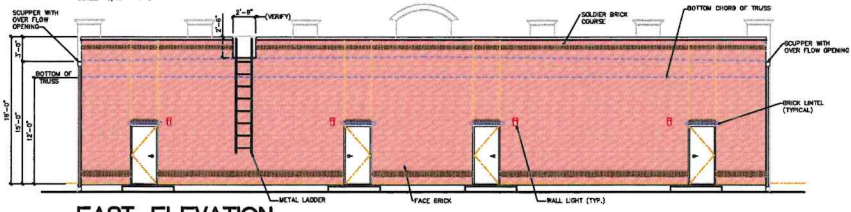
WEST ELEVATION
SCALE: 3/16" = 1'-0"



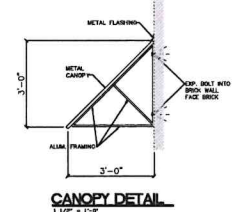
NORTH ELEVATION
SCALE: 3/16" = 1'-0"



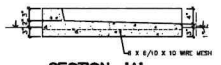
SOUTH ELEVATION
SCALE: 3/16" = 1'-0"



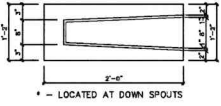
EAST ELEVATION
SCALE: 3/16" = 1'-0"



CANOPY DETAIL
1/16" = 1'-0"



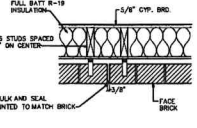
SECTION 'A'
1/16" = 1'-0"



CONCRETE SPLASH BLOCK
1/16" = 1'-0"

LOOSE BRICK LINTEL SCHEDULE

SPAN - FT.	LINTEL SIZE
4 FT.	L 4 x 3 x 3/16\"/>



BRICK CONTROL
NOT TO SCALE

REVISIONS	
NO.	RESPONSE

JOHN TAYLOR AND ASSOCIATES
ARCHITECTS
1000 WESTWOOD DRIVE, SUITE 201
DALLAS, TEXAS 75241
PHONE: (214) 442-1100
FAX: (214) 442-1107
E-MAIL: jta@jtaarch.com

PROPOSED RETAIL BUILDING
BY
RUMFIELD PROPERTIES
1001 NORTH MAIN STREET
JOSHUA, TEXAS

JOB NO.	2824
DRAWN BY:	JCT
CHECK BY:	JCT
DATE:	05/08/2024

SHEET TITLE:
B EXTERIOR ELEVATIONS

SHEET NO.
A3.0
OF 3