

Speed Enforcement Evaluator

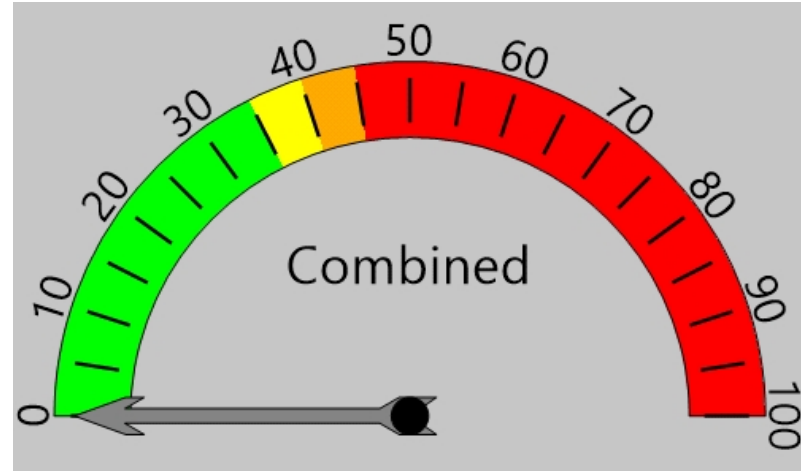
Location
808 Waterford

Total Percentage of Enforceable Violations

Closest Cross Street
Lighthouse

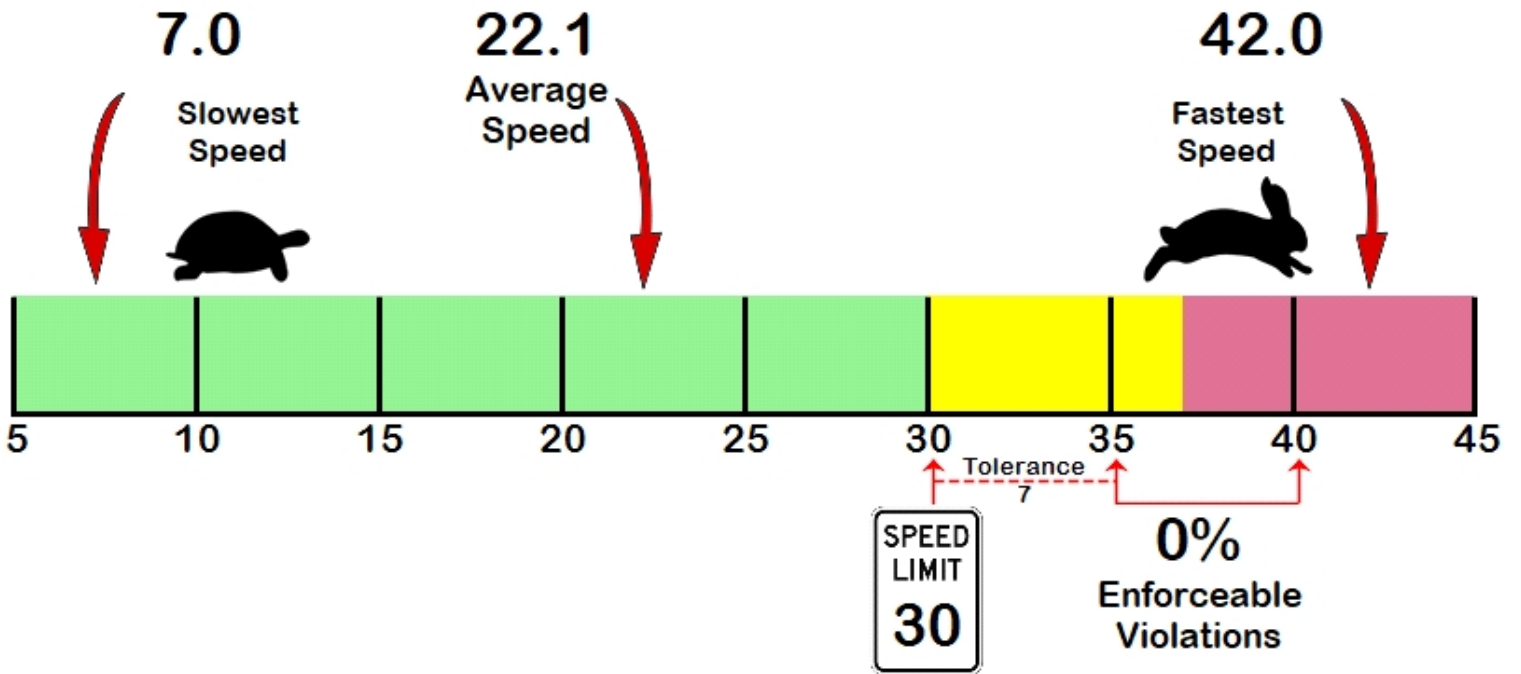
Posted Speed Limit 30 MPH
Enforcement Tolerance 7 MPH
Enforcement Limit Greater than 37 MPH

Analysis Dates
Start: 9/18/2024
End: 9/25/2024



Equipment Used
Jamar Engineer

Requested By
Residence



Default Report Title
Use Preferences to Define Titles

Vehicle Totals - Combined

<= 15	<= 20	<= 25	<= 30	<= 35	<= 40	<= 45	<= 50	<= 55	<= 60	<= 65	<= 70	> 70
734	806	1219	945	284	37	7	0	0	0	0	0	0

85th Percentile: 28.9

Vehicle Totals - Unknown, 1

<= 15	<= 20	<= 25	<= 30	<= 35	<= 40	<= 45	<= 50	<= 55	<= 60	<= 65	<= 70	> 70
144	364	640	447	99	9	2	0	0	0	0	0	0

85th Percentile: 27.9

Vehicle Totals - Unknown, 2

<= 15	<= 20	<= 25	<= 30	<= 35	<= 40	<= 45	<= 50	<= 55	<= 60	<= 65	<= 70	> 70
590	442	579	498	185	28	5	0	0	0	0	0	0

85th Percentile: 28.9