

Speed Enforcement Evaluator

Location

831 Waterford

Closest Cross Street

Alexandria

GPS

Latitude: 0.000000
Longitude: 0.000000

Analysis Dates

Start: 11/4/2024
End: 11/12/2024

Installed By

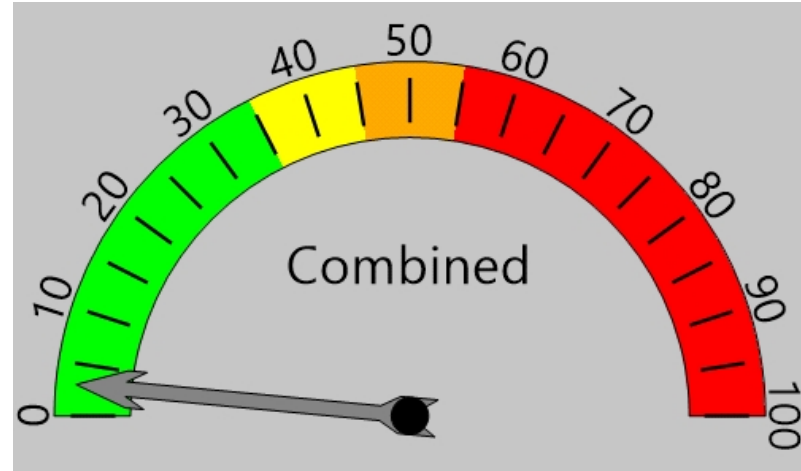
Richard B

Requested By

Kristin H

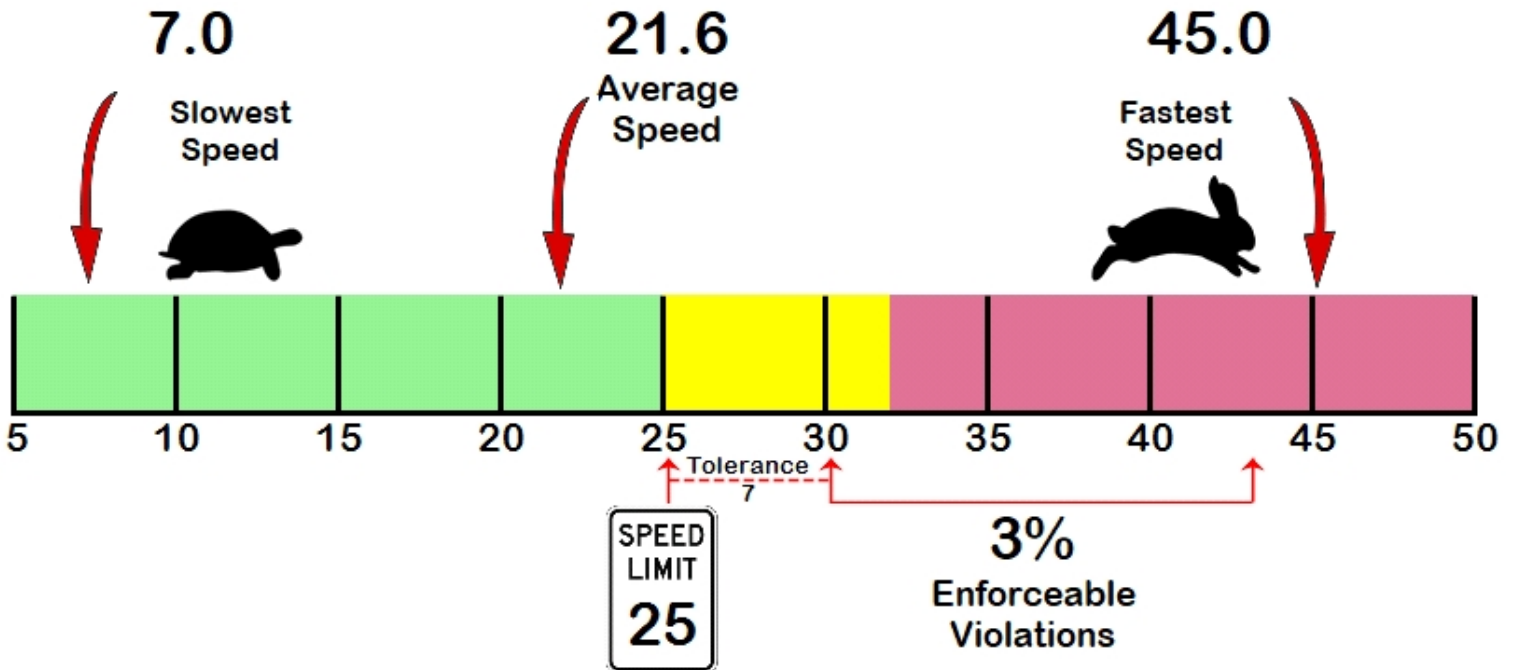
Total Percentage of Enforceable Violations

Posted Speed Limit 25 MPH
Enforcement Tolerance 7 MPH
Enforcement Limit Greater than 32 MPH



Percent Speeding: 3%

Rating: Low



Default Report Title
Use Preferences to Define Titles

Vehicle Totals - Combined

<= 15	<= 20	<= 25	<= 30	<= 35	<= 40	<= 45	<= 50	<= 55	<= 60	<= 65	<= 70	> 70
824	1286	1528	977	249	47	6	0	0	0	0	0	0

85th Percentile: 27.9

Vehicle Totals - Unknown, 1

<= 15	<= 20	<= 25	<= 30	<= 35	<= 40	<= 45	<= 50	<= 55	<= 60	<= 65	<= 70	> 70
382	725	734	293	58	12	1	0	0	0	0	0	0

85th Percentile: 25.9

Vehicle Totals - Unknown, 2

<= 15	<= 20	<= 25	<= 30	<= 35	<= 40	<= 45	<= 50	<= 55	<= 60	<= 65	<= 70	> 70
442	561	794	684	191	35	5	0	0	0	0	0	0

85th Percentile: 28.9