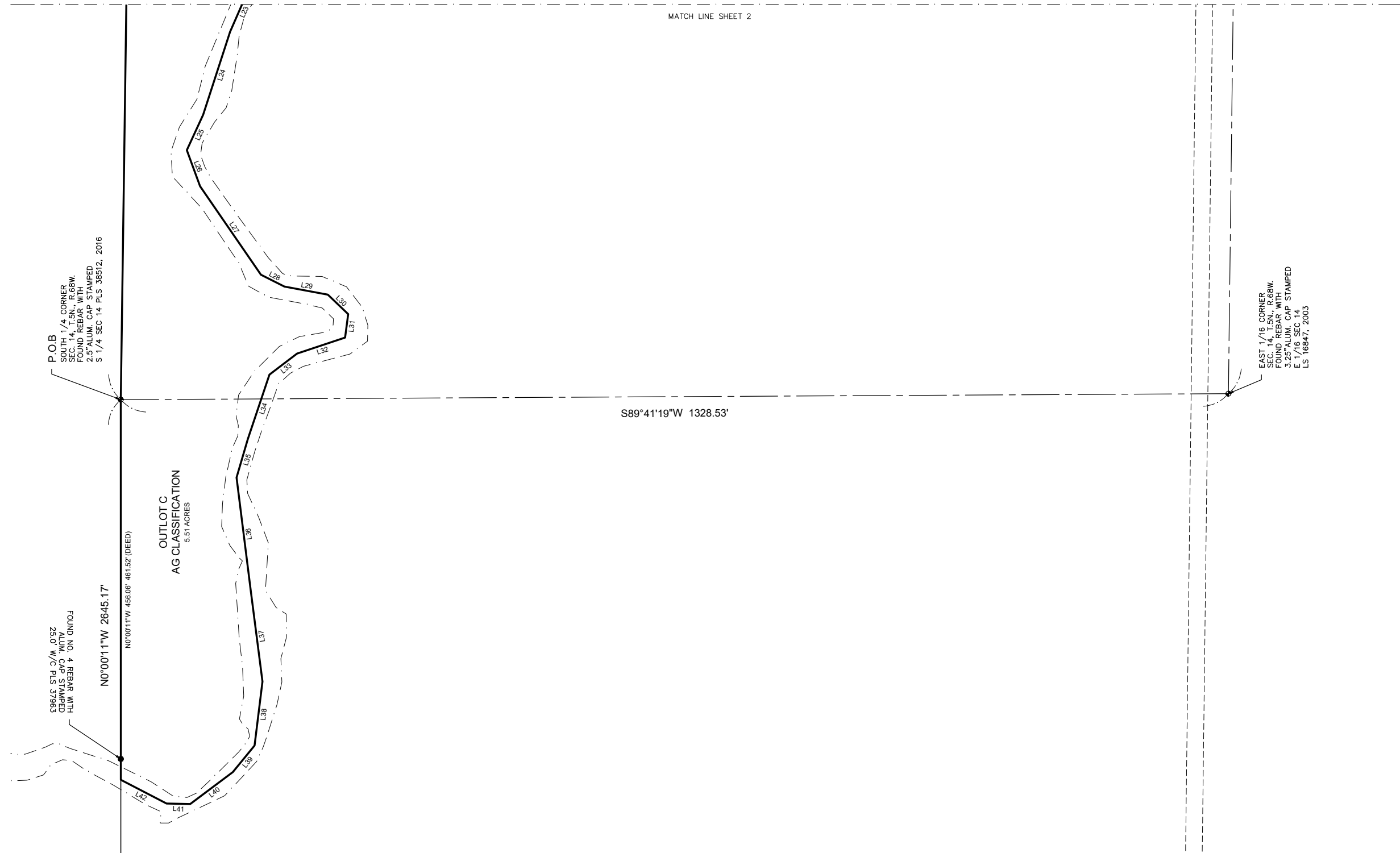
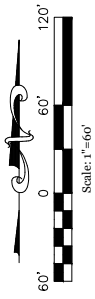


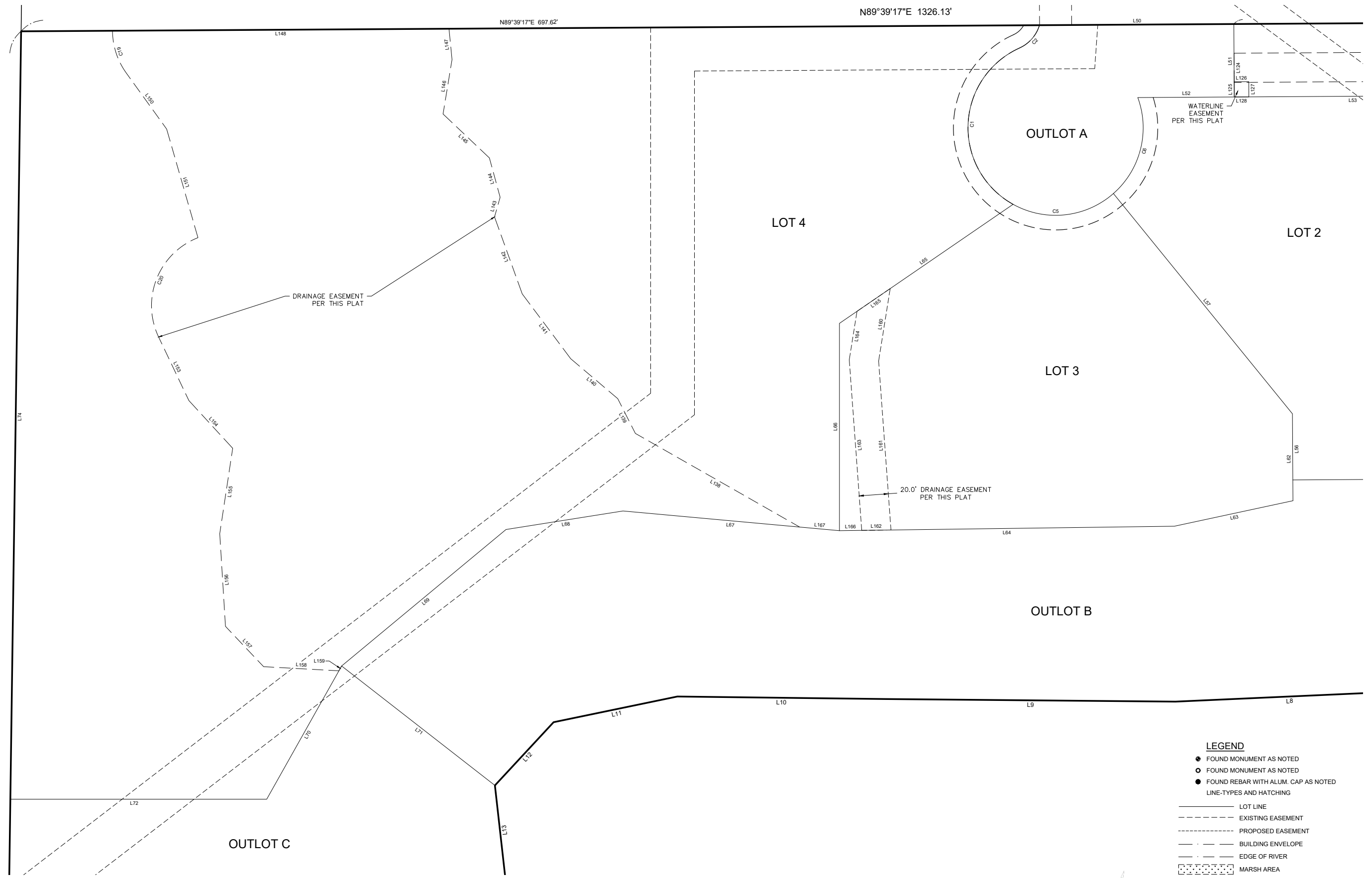
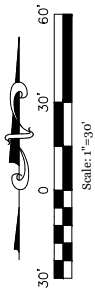
THOMPSON RIDGE ESTATES

LOCATED IN THE SOUTHEAST QUARTER OF SECTION 14 AND THE NORTHEAST QUARTER OF SECTION 23, TOWNSHIP 5 NORTH,
RANGE 68 WEST OF THE 6TH PRINCIPAL MERIDIAN, TOWN OF JOHNSTOWN, COUNTY OF LARIMER, STATE OF COLORADO



THOMPSON RIDGE ESTATES

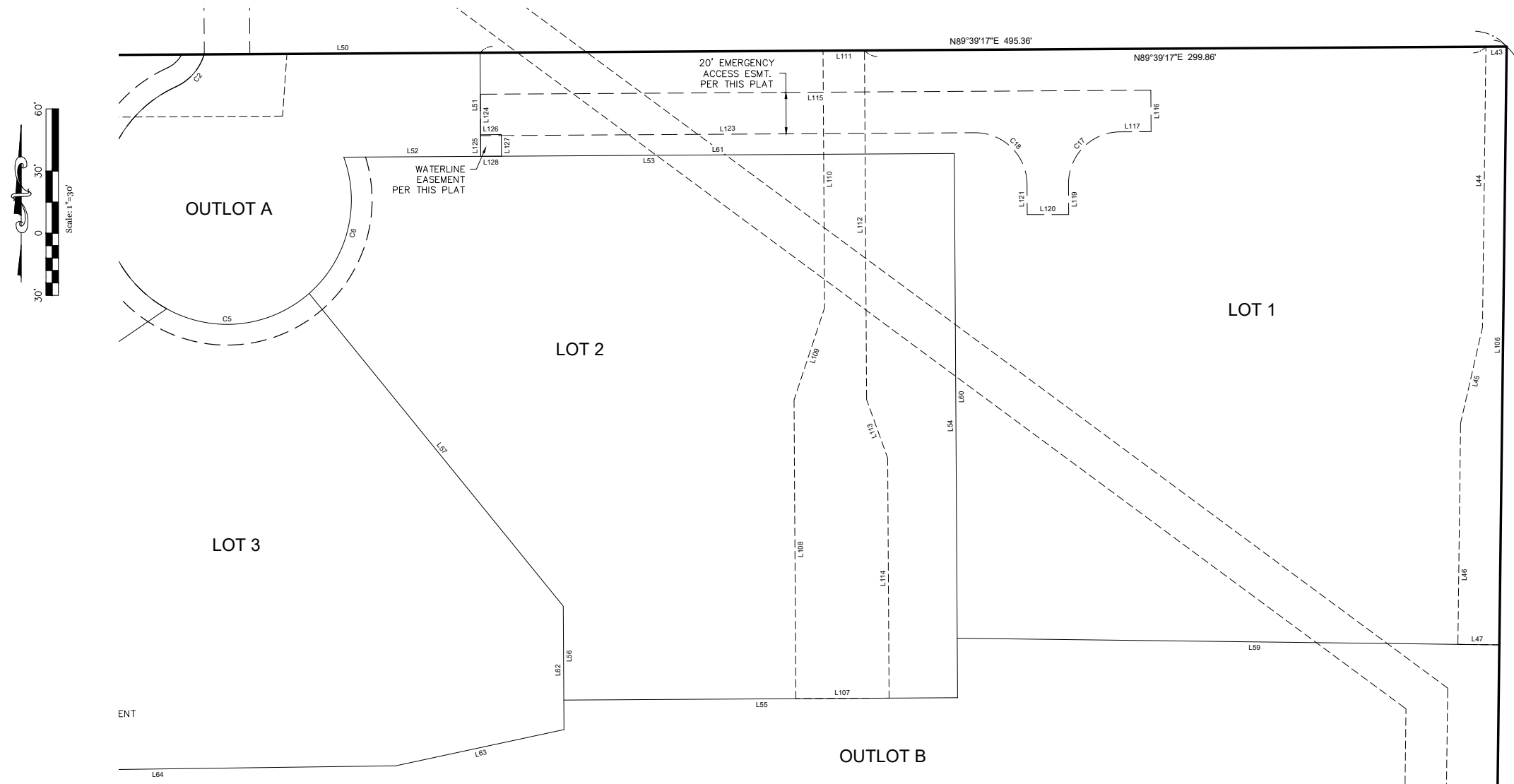
LOCATED IN THE SOUTHEAST QUARTER OF SECTION 14 AND THE NORTHEAST QUARTER OF SECTION 23, TOWNSHIP 5 NORTH, RANGE 68 WEST OF THE 6TH PRINCIPAL MERIDIAN, TOWN OF JOHNSTOWN, COUNTY OF LARIMER, STATE OF COLORADO



- LEGEND**
- FOUND MONUMENT AS NOTED
 - FOUND MONUMENT AS NOTED
 - FOUND REBAR WITH ALUM. CAP AS NOTED
 - LINE-TYPES AND HATCHING
 - LOT LINE
 - - - - EXISTING EASEMENT
 - · - · - PROPOSED EASEMENT
 - · — · — BUILDING ENVELOPE
 - · - · - EDGE OF RIVER
 - ▨ MARSH AREA

THOMPSON RIDGE ESTATES

LOCATED IN THE SOUTHEAST QUARTER OF SECTION 14 AND THE NORTHEAST QUARTER OF SECTION 23, TOWNSHIP 5 NORTH, RANGE 68 WEST OF THE 6TH PRINCIPAL MERIDIAN, TOWN OF JOHNSTOWN, COUNTY OF LARIMER, STATE OF COLORADO



LINE TABLE			LINE TABLE			LINE TABLE			LINE TABLE		
LINE #	BEARING	DISTANCE	LINE #	BEARING	DISTANCE	LINE #	BEARING	DISTANCE	LINE #	BEARING	DISTANCE
L1	N67°01'57"W	30.67	L31	S07°32'38"W	28.37	L64	S89°14'23"W	229.45'	L128	S89°39'17"W	10.00'
L2	S87°53'50"W	71.28	L32	S71°33'28"W	60.70'	L65	S55°33'35"W	144.24'	L138	N60°18'58"W	129.59'
L3	S76°57'21"W	88.84'	L33	S52°43'16"W	41.69'	L66	S00°00'00"E	142.07'	L139	N26°54'12"W	26.71'
L4	S57°41'36"W	32.76'	L34	S18°31'18"W	81.60'	L67	N84°47'52"W	148.88'	L140	N49°37'30"W	42.30'
L5	S89°51'28"W	37.75'	L35	S16°21'00"W	48.00'	L68	S80°59'56"W	81.14'	L141	N36°47'27"W	55.42'
L6	N74°15'57"W	62.98'	L36	S07°10'03"E	137.72'	L69	S50°17'29"W	146.37'	L142	N19°47'26"W	56.98'
L7	N89°42'18"W	65.28'	L37	S07°19'52"E	109.05'	L70	S29°20'56"W	104.74'	L143	N15°58'31"E	13.98'
L8	S87°25'20"W	156.41'	L38	S07°02'21"W	77.35'	L71	N52°03'46"W	133.13'	L144	N15°15'53"W	27.96'
L9	N89°29'10"W	198.44'	L39	S39°17'37"W	41.12'	L72	N90°00'00"W	175.62'	L145	N46°30'16"W	43.75'
L10	N89°18'47"W	142.83'	L40	S53°10'10"W	63.94'	L74	N00°48'15"E	526.27'	L146	N09°21'04"E	37.78'
L11	S78°16'21"W	86.58'	L41	N88°50'50"W	28.32'	L106	S00°41'33"W	288.79'	L147	N05°34'24"W	21.25'
L12	S42°51'52"W	59.09'	L42	N62°35'25"W	61.82'	L107	S89°39'24"W	45.00'	L148	S89°39'17"W	230.54'
L13	S06°24'46"E	62.14'	L43	N89°39'17"E	10.00'	L108	N00°20'36"W	144.20'	L150	S35°45'25"E	47.38'
L14	S48°54'38"E	94.34'	L44	N00°42'01"E	135.45'	L109	N18°20'01"E	46.84'	L151	S16°04'16"E	77.45'
L15	S03°54'04"W	54.28'	L45	N12°51'59"E	47.45'	L110	N00°20'36"W	124.10'	L153	S25°27'26"E	48.26'
L16	S23°00'34"W	28.31'	L46	N00°41'58"E	106.77'	L111	N89°39'17"E	20.00'	L154	S42°33'09"E	44.37'
L17	S73°21'11"W	25.65'	L47	N89°18'02"W	20.03'	L112	S00°20'36"E	168.48'	L155	S08°36'54"W	59.19'
L18	N60°23'58"W	36.28'	L50	N89°39'17"E	133.15'	L113	S19°45'22"E	30.09'	L156	S03°31'41"E	63.61'
L19	N39°57'35"W	60.91'	L51	S00°20'43"E	50.00'	L114	S00°20'36"E	115.82'	L157	S43°23'14"E	38.07'
L20	S88°32'06"W	40.26'	L52	S89°39'17"W	66.09'	L115	N89°39'24"E	323.54'	L158	S86°52'02"E	51.65'
L21	S37°54'01"W	135.93'	L53	S89°39'17"W	294.63'	L116	S00°20'36"E	20.00'	L159	N29°20'56"E	3.81'
L22	S32°08'09"W	62.71'	L54	N00°20'36"W	262.68'	L117	S89°39'24"W	15.00'	L160	S09°04'42"W	50.29'
L23	S23°36'33"W	57.25'	L55	N89°39'24"E	190.00'	L119	S00°20'36"E	14.76'	L161	S04°10'59"E	116.10'
L24	S18°00'40"W	104.75'	L56	N00°20'36"W	45.32'	L120	N90°00'00"W	20.00'	L162	S89°14'23"W	20.04'
L25	S24°43'02"W	46.68'	L57	N39°05'24"W	194.48'	L121	N00°20'36"W	14.64'	L163	N04°10'59"W	117.22'
L26	S20°09'36"E	46.13'	L59	N89°18'02"W	261.64'	L123	S89°39'24"W	238.54'	L164	N09°04'42"E	33.63'
L27	S34°30'56"E	128.78'	L60	N00°20'36"W	233.97'	L124	N00°20'43"W	20.00'	L165	N55°33'35"E	27.58'
L28	S63°13'25"E	31.52'	L61	S89°39'17"W	228.54'	L125	N00°20'43"W	10.40'	L166	N89°14'23"E	15.28'
L29	S79°26'21"E	53.03'	L62	N00°20'36"W	59.58'	L126	N89°18'20"E	10.00'	L167	S84°47'52"E	27.33'
L30	S46°13'51"E	33.79'	L63	S77°51'31"W	83.10'	L127	S00°20'43"E	10.46'			

CURVE TABLE					
CURVE #	LENGTH	RADIUS	DELTA	CHORD	DISTANCE
C1	132.64'	60.00'	126°39'30"	N02°21'18"E	107.23'
C2	21.40'	25.00'	49°03'06"	N41°09'30"E	20.76'
C5	230.04'	60.00'	219°40'06"	S89°36'36"W	112.88'
C6	72.12'	60.00'	68°52'19"	N14°14'43"E	67.86'
C17	39.27'	25.00'	90°00'00"	S44°39'24"W	35.36'
C18	39.27'	25.00'	90°00'00"	N45°20'36"W	35.36'
C19	30.90'	50.00'	35°24'42"	S18°03'04"E	30.41'
C20	82.14'	50.00'	94°07'37"	S21°36'22"W	73.21'

- LEGEND**
- FOUND MONUMENT AS NOTED
 - FOUND MONUMENT AS NOTED
 - FOUND REBAR WITH ALUM. CAP AS NOTED
- LINE-TYPES AND HATCHING
- LOT LINE
 - - - - - EXISTING EASEMENT
 - - - - - PROPOSED EASEMENT
 - BUILDING ENVELOPE
 - EDGE OF RIVER
 - ▨▨▨▨▨▨ MARSH AREA