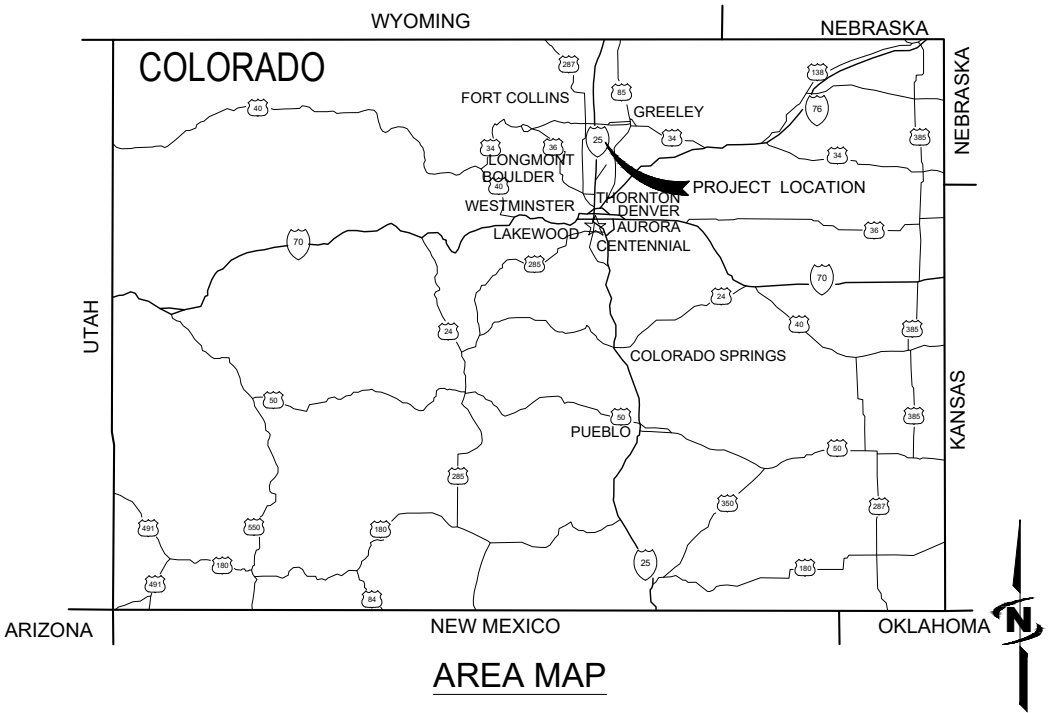


ALLEY SEWER REHABILITATION

TOWN OF JOHNSTOWN

May 2024

PRELIMINARY PLANS NOT FOR CONSTRUCTION



Sheet List Table	
Sheet Number	Sheet Title
GENERAL	
G-001	COVER
G-002	LEGEND & ABBREVIATIONS
G-003	LEGEND & ABBREVIATIONS
PLAN & PROFILE	
C-201	PLAN & PROFILE
C-202	PLAN & PROFILE
DETAILS	
C-501	DETAILS



APPROXIMATE QUANTITIES			
ITEMS NOT INDICATED ARE CONSIDERED INCIDENTAL			
Item No.	Item Description	Quantity	Unit
1	8" SDR 35 PVC SEWER PIPE	550	LF
2	48" MANHOLE	2	EA
3	SERVICE CONNECTIONS	18	LS
4	JOINT ENCASEMENTS IN CONCRETE	16	EA
5	CONCRETE REPAIR*	30	SY
6	ASPHALT REPAIR*	285	SY
7	GRAVEL SURFACE REPAIR*	60	SY

*ASSUMES UP TO 6 FT WIDTH SURFACE DISTURBANCE ALONG TRENCH

PROJECT NO. 87-24-001



J-U-B ENGINEERS, INC.

2809 E. Harmony Rd. Suite 300, Fort Collins, CO 80528
p 970 377 3602 w www.jub.com



THE
LANGDON
GROUP



GATEWAY
MAPPING
INC.

J-U-B FAMILY OF COMPANIES

REUSE OF DOCUMENTS

J-U-B grants to CLIENT a nonexclusive, non-transferable license to use the Drawings, Specifications and/or Contract Documents (Documents) as follows:

CLIENT may make and retain copies of the Documents for reference, but J-U-B shall retain all common law, statutory and other reserved rights, including the copyright thereto, and the same shall not be reused on this Project or any other Project without J-U-B's prior written consent. Distribution of Documents to meet regulatory or permitting requirements, or for similar purposes, in connection with the Project, including but not limited to distribution to contractors or subcontractors for the performance of their work, is not to be construed as publication adversely affecting the reserved rights of J-U-B. The Documents are not intended for use in creating dtm for grading or earthwork, survey staking layout (unless specifically identified as such in the documents), or property boundary layouts.

Any reuse without written consent by J-U-B, or without verification or adoption by J-U-B for the specific purpose intended by the reuse, will be at CLIENT's sole risk and without liability or legal exposure to J-U-B. The CLIENT shall release, defend, indemnify, and hold J-U-B harmless from any claims, damages, actions or causes of action, losses, and expenses, including reasonable attorneys' and expert fees, arising out of or resulting from such reuse.

If the Documents are provided in electronic format, the electronic documents are subject to the provisions of J-U-B's "electronic document/data limited license" found at edocs.jub.com

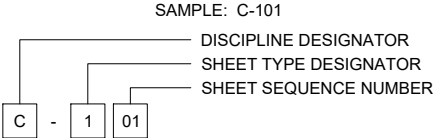
Plot Date: 5/24/2024 4:55 PM Plotted By: KC Young
Date Created: 4/29/2024 J:\JUB\COM\CENTRAL\CLIENTS\JOHNSTOWN\PROJECT 5187-24-001 ALLEY SEWER DESIGN\CAD\DWG\PROJECT 5187-24-001 G-002.DWG

LINE LEGEND

LINE DESCRIPTION	PROPOSED LINE	EXISTING LINE
POWER / COMMUNICATIONS		
OVERHEAD POWER	—— OHP ——	—— OHP ——
UNDERGROUND POWER	—— UP ——	- - - - UP - - - -
OVERHEAD TELEPHONE	—— OHT ——	- - - - OHT - - - -
UNDERGROUND TELEPHONE	—— UT ——	- - - - UT - - - -
FIBER OPTIC	—— F/O ——	- - - - F/O - - - -
CABLE TELEVISION	—— CTV ——	- - - - CTV - - - -
UNDERGROUND POWER, TEL, CABLE TV		- - - - P,T,CTV - - - -
UNDERGROUND POWER, TEL, CABLE TV, GAS		- - - P,T,CTV,G - - -
STORM DRAIN		
STORM DRAIN (GENERAL)	—— SD ——	- - - - SD - - - -
STORM DRAIN	—— X"SD ——	- - - - X"SD - - - -
ROOF DRAIN	—— RD ——	- - - - RD - - - -
LAND DRAIN	—— LD ——	- - - - LD - - - -
SANITARY SEWER		
SANITARY SEWER (GENERAL)	—— SS ——	- - - - SS - - - -
SANITARY SEWER	—— X"SS ——	- - - - X"SS - - - -
SANITARY SEWER SERVICE	—— SS —— SS ——	- - - SS - - - - SS - - -
SEWER FORCE MAIN	—— FM ——	- - - - FM - - - -
WATER		
WATER (GENERAL)	—— W ——	- - - - W - - - -
WATER (SPECIFIED SIZE)	—— X"W ——	- - - - X"W - - - -
WATER SERVICE	—— WS —— WS ——	- - - WS - - - - WS - - -
IRRIGATION		
IRRIGATION	—— IRR ——	- - - - IRR - - - -
GRAVITY IRRIGATION	—— GIRR ——	- - - - GIRR - - - -
PRESSURE IRRIGATION	—— PIRR ——	- - - - PIRR - - - -
POTABLE WATER	—— PW ——	- - - - PW - - - -
NON-POTABLE WATER	—— NPW ——	- - - - NPW - - - -
GAS		
NATURAL GAS	—— G ——	- - - - G - - - -
NATURAL GAS SERVICE	—— G —— G ——	- - - G - - - - G - - -
HIGH PRESSURE GAS	—— HPG ——	- - - - HPG - - - -
LIQUID GAS	—— LG ——	- - - - LG - - - -
UTILITY		
CHLORINE LINE	—— CHL ——	- - - - CHL - - - -
INDUSTRIAL WASTE WATER	—— IWW ——	- - - - IWW - - - -
DRAIN LINE	—— DL ——	- - - - DL - - - -

LINE DESCRIPTION	PROPOSED LINE	EXISTING LINE
BOUNDARY		
PROPERTY LINE	—— P/L ——	—— P/L ——
PROPERTY LINE	—— - - - - ——	—— - - - - ——
RIGHT OF WAY	—— R/W ——	—— R/W ——
TEMPORARY EASEMENT	—— T/E ——	—— T/E ——
PERMANENT EASEMENT	—— P/E ——	—— P/E ——
TOWNSHIP AND RANGE		—— - - - - ——
SECTION LINE		—— - - - - ——
QUARTER SECTION LINE		—— - - - - ——
1/16 SECTION LINE		—— - - - - ——
STATE LINE		—— - - - - ——
COUNTY LINE		—— - - - - ——
SITE		
FENCE	—— X ——	- - - - X - - - -
MAJOR CONTOUR	—— 2521 ——	—— - - - - ——
MINOR CONTOUR		—— - - - - ——
GRADE BREAK		—— GB ——
TOP OF BANK		—— TOB ——
TOE OF SLOPE		—— TOE ——
CUT LIMITS	—— - - - - ——	
CUT LIMITS	—— CUT ——	
FILL LIMITS	—— ——	
FILL LIMITS	—— FILL ——	
DITCH	—— . . . ——	—— . . . ——
STORM SWALE	—— . . . ——	—— . . . ——
EDGE OF WATER		—— . . . ——
HIGH WATER		—— - - - - ——
WETLAND		—— WET ——
WETLAND BOG		—— BOG ——
WETLAND MARSH		—— MRSH ——
WETLAND SWAMP		—— SWMP ——
ROADWAY		
ROAD SHOULDER	—— - - - - ——	—— - - - - ——
ROAD CENTERLINE	—— - - - - ——	—— - - - - ——
ROAD ASPHALT	—— - - - - ——	—— - - - EP - - - - ——
ROAD GRAVEL	—— EG ——	—— - - - EG - - - - ——
TOP BACK OF CURB	—— - - - - ——	—— - - - - ——
LIP OF GUTTER	—— - - - - ——	—— - - - - ——
LANDSCAPING LIMITS	—— LS ——	—— - - - LS - - - - ——

SHEET NUMBERING

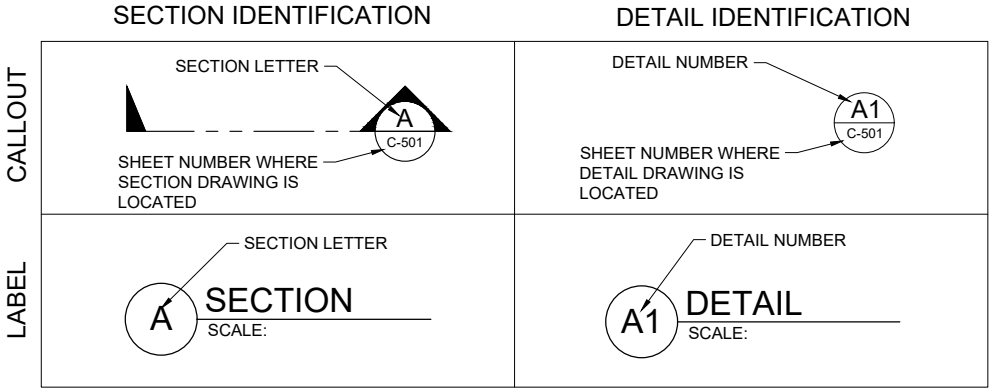


DISCIPLINE DESIGNATORS		
DISCIPLINE	DESIGNATOR	DESCRIPTION
GENERAL	G	ALL GENERAL
	GI	GENERAL INFORMATION
	GC	GENERAL CONTRACTUAL
	GR	GENERAL RESOURCE
SURVEY/MAPPING	V	ALL SURVEY
GEOTECHNICAL	B	ALL GEOTECHNICAL
CIVIL	C	ALL CIVIL
LANDSCAPE	L	ALL LANDSCAPE
STRUCTURAL	S	ALL STRUCTURAL
ARCHITECTURAL	A	ALL ARCHITECTURE
EQUIPMENT	Q	ALL EQUIPMENT
MECHANICAL	M	ALL MECHANICAL
ELECTRICAL	E	ALL ELECTRICAL
PLUMBING	P	ALL PLUMBING
PROCESS	D	ALL PROCESS
RESOURCE	R	ALL RESOURCE

SHEET TYPE DESIGNATORS	
DESIGNATOR	SHEET TYPE
0	GENERAL (SYMBOLS, LEGENDS, NOTES, ETC.)
1	PLANS (HORIZONTAL VIEWS)
2	ELEVATIONS, PROFILES, COMBINED PLAN & PROFILES
3	SECTIONS (SECTIONAL VIEWS)
4	LARGE-SCALE VIEWS (PLANS, ELEVATIONS, ECT.)
5	DETAILS OR COMBINED DETAILS AND SECTIONS
6	SCHEDULES AND DIAGRAMS
7	USER DEFINED
8	USER DEFINED
9	3D REPRESENTATIONS (ISOMETRICS, PERSPECTIVES, PHOTOS)

SECTION AND DETAIL IDENTIFIERS

NOTE:
A DASH MAY BE PLACED IN THE LOWER PORTION OF THE IDENTIFIER IF THE DETAIL DRAWING OR SECTION VIEW IS LOCATED ON THE SAME SHEET.



J-U-B ENGINEERS, INC.

J-U-B ENGINEERS, INC.
2809 E. Harmony Road
Suite 300
Fort Collins, CO 80528
Phone: 970.377.3602
www.jub.com

PRELIMINARY
PLANS

NOT FOR
CONSTRUCTION

REUSE OF DRAWINGS
J-U-B SHALL RETAIN ALL COMMON LAW, STATUTORY, COPYRIGHT AND OTHER RIGHTS IN ANY DESIGN OR INVENTION. NO PART OF THIS DESIGN OR INVENTION SHALL BE REPRODUCED OR TRANSMITTED IN ANY FORM OR BY ANY MEANS, ELECTRONIC OR MECHANICAL, INCLUDING PHOTOCOPYING, RECORDING, OR BY ANY INFORMATION STORAGE AND RETRIEVAL SYSTEM, WITHOUT THE WRITTEN CONSENT OF J-U-B. ANY REUSE WITHOUT WRITTEN CONSENT BY J-U-B WILL BE AT CLIENT'S SOLE RISK AND WITHOUT LIABILITY OR LEGAL EXPOSURE TO J-U-B.

REVISION		BY		DATE
NO.	DESCRIPTION			

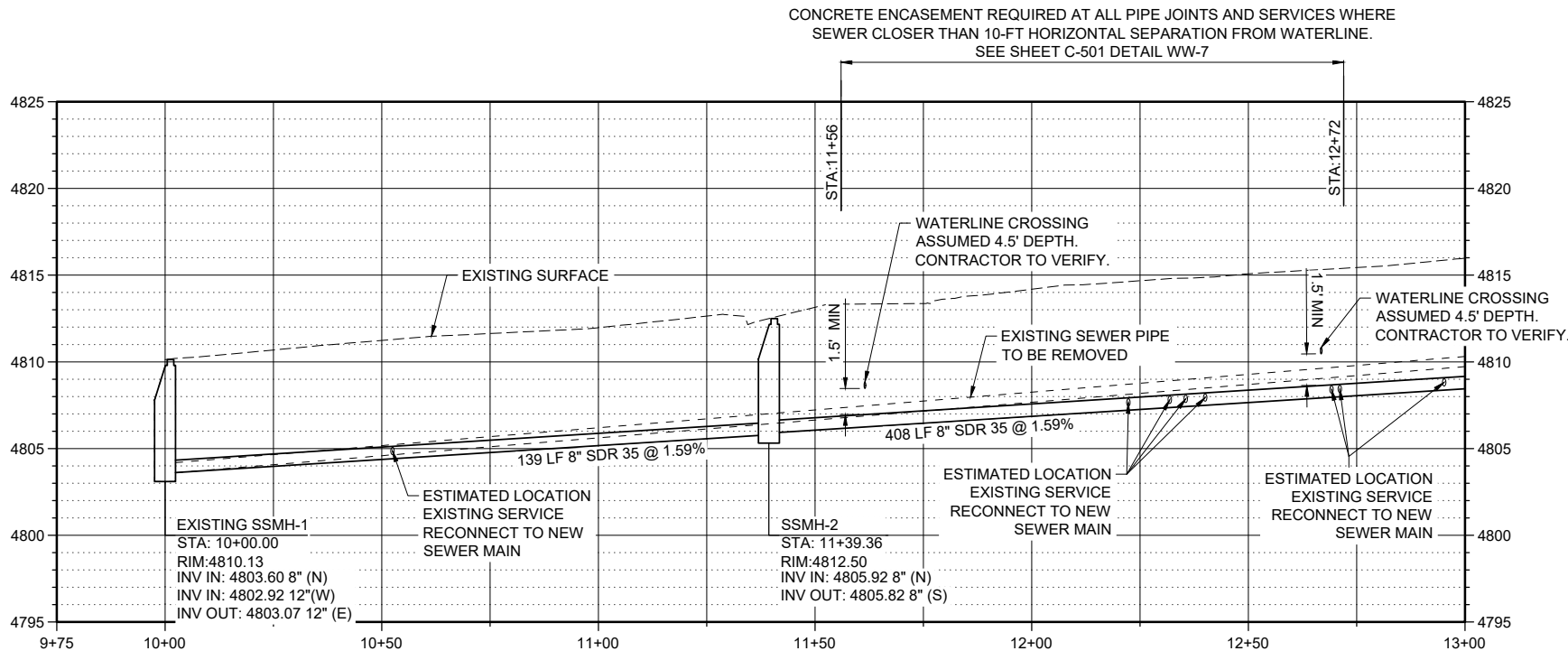
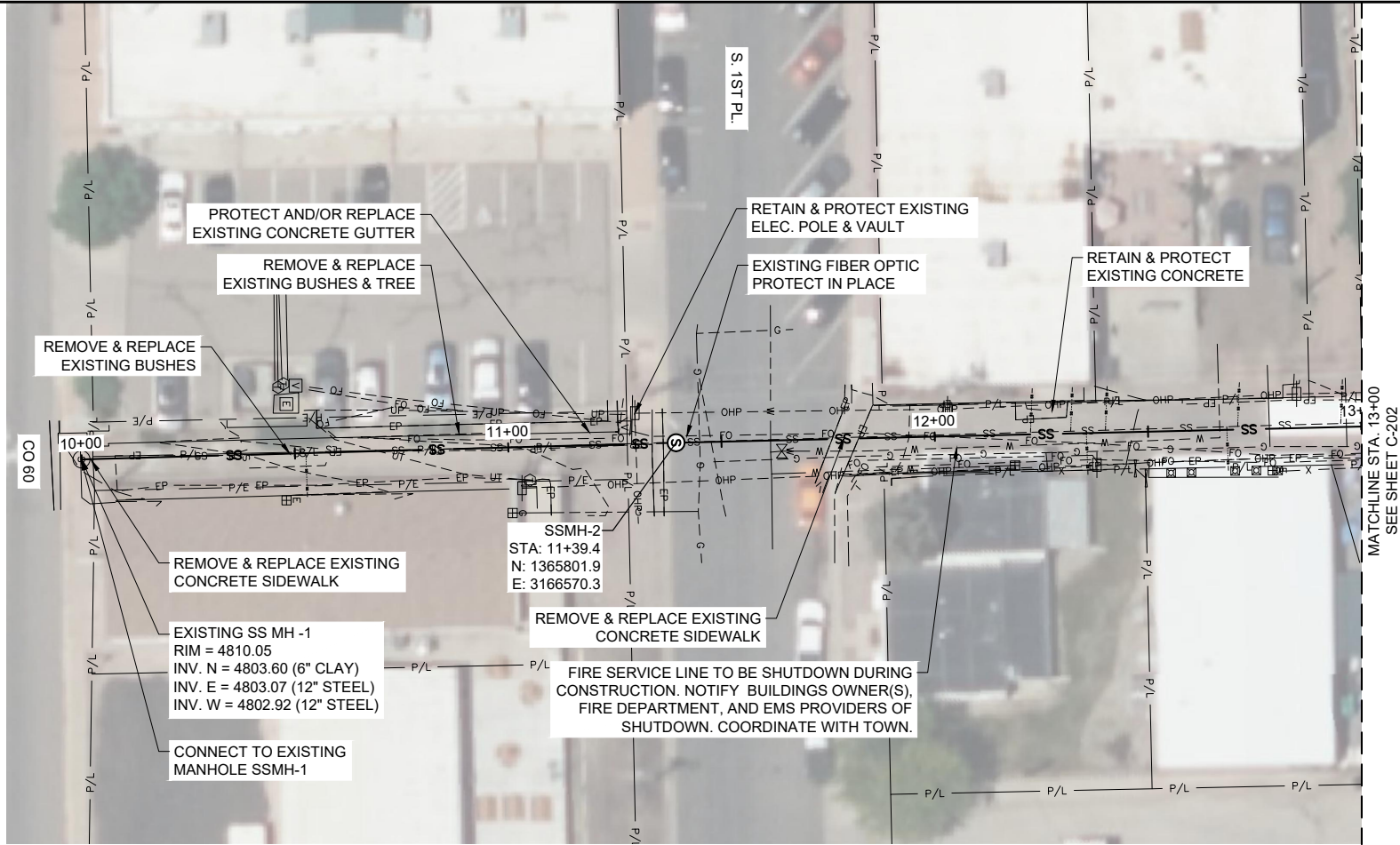
ALLEY SEWER REHABILITATION
TOWN OF JOHNSTOWN

LEGEND & ABBREVIATIONS

FILE : 87-24-001_G-002
JUB PROJ. # : 87-24-001
DRAWN BY: TJG
DESIGN BY: TJG
CHECKED BY: KCY
AT FULL SIZE, IF NOT ONE INCH SCALE ACCORDINGLY
LAST UPDATED: 5/21/2024
SHEET NUMBER:

G-002

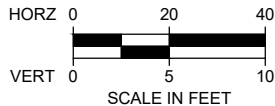
Plot Date: 5/24/2024 5:05 PM Plotted By: KC Young
Date Created: 5/21/2024 JUB: COMCENTRAL CLIENTS\CO\JOHNSTOWN\PROJECTS\87-24-001 ALLEYSEWERDESIGN\CADD\SHEET\87-24-001 C-201.DWG



KEY MAP

GENERAL NOTES:

- PLANS DEVELOPED FOR CONCEPT DESIGN ONLY. NOT TO BE USED FOR CONSTRUCTION.
- NEW SEWER PIPE TO BE GASKETED 8" PVC D3034 SDR 35.
- REFERENCE TOWN OF JOHNSTOWN DESIGN CRITERIA AND CONSTRUCTION REGULATIONS, OR MOST CURRENT VERSION, FOR REQUIREMENTS.
- CONTRACTOR TO PROTECT ALL BUILDINGS ALONG ALIGNMENT. USE ADEQUATE SHORING WHERE NECESSARY TO PROTECT BUILDING FOUNDATIONS.
- NEW SEWER TO OCCUPY SAME TRENCH AS EXISTING SEWER. REMOVE EXISTING SEWER PIPE. BYPASS PUMPING REQUIRED TO MAINTAIN SERVICE AT ALL TIMES UNLESS SPECIFICALLY AUTHORIZED BY OWNER. SUBMIT SERVICE AND BYPASS PUMPING PLAN TO TOWN FOR REVIEW AND ACCEPTANCE PRIOR TO BEGINNING CONSTRUCTION.
- UTILITIES IDENTIFIED VIA ONE CALL LOCATES. CONTRACTOR TO FIELD VERIFY ALL EXISTING UTILITIES AND CROSSINGS. MAINTAIN 18" MINIMUM VERTICAL SEPARATION BETWEEN ALL EXISTING UTILITIES AND NEW SEWER LINE. NOTIFY ENGINEER OR TOWN OF JOHNSTOWN IF ANY CONFLICTS EXIST.
- EXISTING SANITARY SERVICE LOCATIONS AND QUANTITIES ESTIMATED BASED ON BUILDING LOCATIONS AND REVIEW OF LIMITED CCTV DATA. CONTRACTOR TO VERIFY.
- INSTALL SEWER LINE AT MINIMUM 18" BENEATH EXISTING WATERLINE. IF 18" REQUIREMENT CANNOT BE MET, CONSTRUCT THE CROSSING USING ONE LENGTH OF PIPE AT LEAST 14 FEET LONG CENTERED OVER OR UNDER THE WATER MAIN. ENCASE ALL SEWER JOINTS WITH CONCRETE THAT EXIST WITHIN 10 FEET EITHER SIDE OF THE WATERLINE. SEE SHEET C-501 DETAIL WW-7. PROTECT AND HOLD OVERHEAD UTILITY POLES WHERE NECESSARY. COORDINATE WITH UTILITY OWNER.
- CONTRACTOR TO PROVIDE AS-BUILT SURVEY INCLUDING INVERT ELEVATIONS, JET AND CAMERA SEWER LINE AFTER CONSTRUCTION COMPLETION.



J-U-B ENGINEERS, INC.

J-U-B ENGINEERS, INC.
2809 E. Harmony Road
Suite 300
Fort Collins, CO 80528

Phone: 970.377.3602
www.jub.com

PRELIMINARY
PLANS

NOT FOR
CONSTRUCTION

REUSE OF DRAWINGS

J-U-B SHALL RETAIN ALL COMMON LAW, STATUTORY, COPYRIGHT AND OTHER RIGHTS IN THIS DESIGN. NO PART OF THIS DESIGN SHALL BE REPRODUCED OR TRANSMITTED IN ANY FORM OR BY ANY MEANS, ELECTRONIC OR MECHANICAL, INCLUDING PHOTOCOPYING, RECORDING, OR BY ANY INFORMATION STORAGE AND RETRIEVAL SYSTEM, WITHOUT THE WRITTEN CONSENT OF J-U-B. ANY REUSE WITHOUT WRITTEN CONSENT BY J-U-B WILL BE AT CLIENTS SOLE RISK AND WITHOUT LIABILITY OR LEGAL EXPOSURE TO J-U-B.

REVISION		BY		DATE
NO.	DESCRIPTION	NO.	DESCRIPTION	DATE

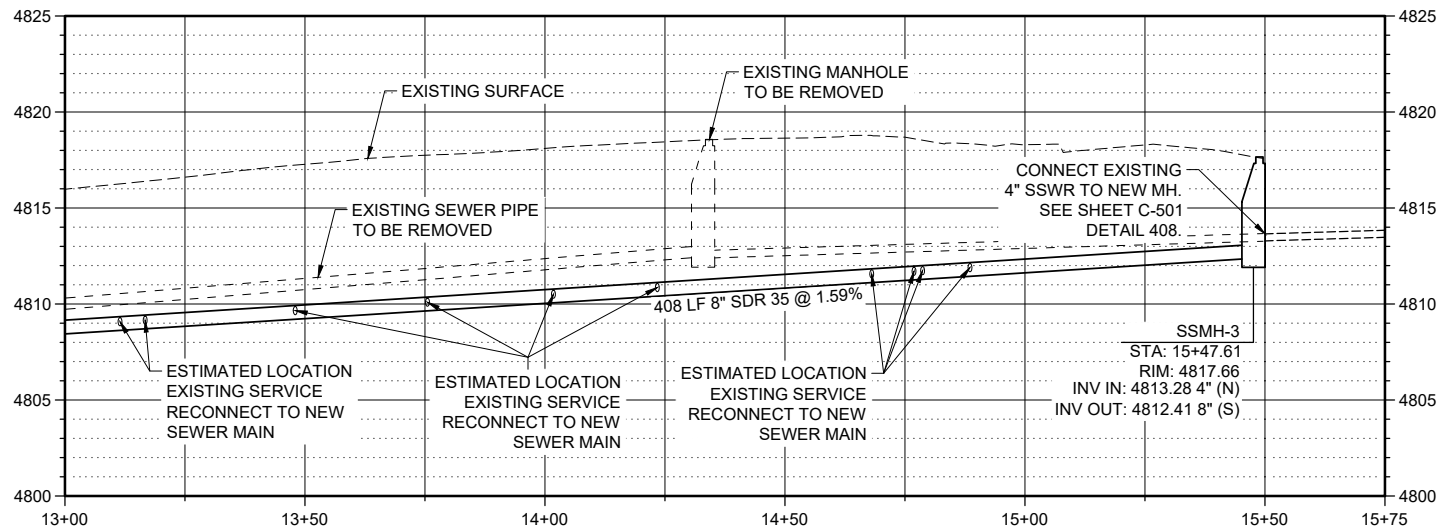
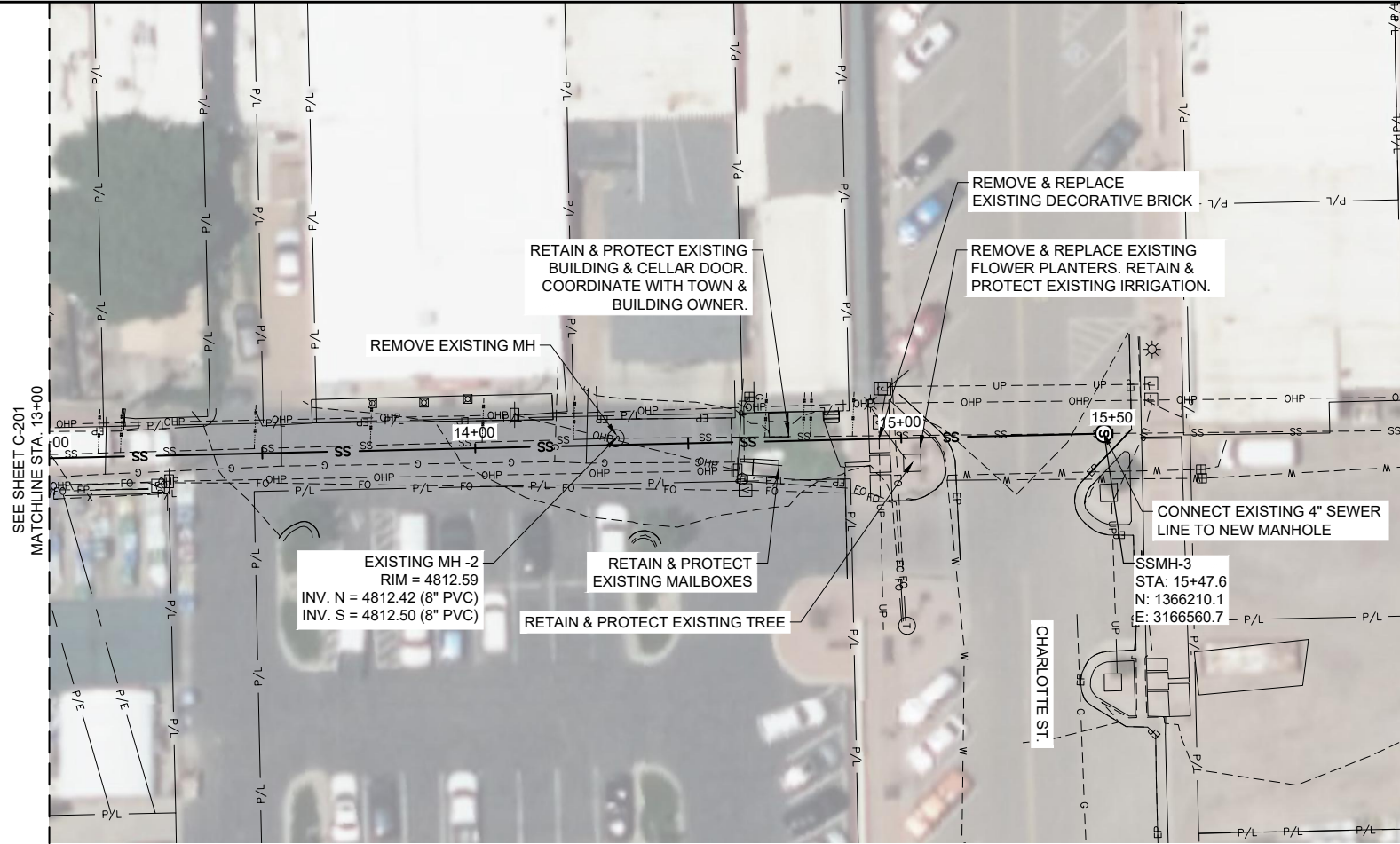
ALLEY SEWER REHABILITATION
TOWN OF JOHNSTOWN

PLAN & PROFILE

FILE: 87-24-001 C-201
JUB PROJ. #: 87-24-001
DRAWN BY: TJG
DESIGN BY: TJG
CHECKED BY: KCY
AT FULL SIZE, IF NOT ONE
INCH SCALE ACCORDINGLY
LAST UPDATED: 5/24/2024

SHEET NUMBER:

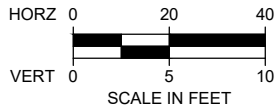
C-201



KEY MAP

GENERAL NOTES:

1. PLANS DEVELOPED FOR CONCEPT DESIGN ONLY. NOT TO BE USED FOR CONSTRUCTION.
2. NEW SEWER PIPE TO BE GASKETED 8" PVC D3034 SDR 35.
3. REFERENCE TOWN OF JOHNSTOWN DESIGN CRITERIA AND CONSTRUCTION REGULATIONS, OR MOST CURRENT VERSION, FOR REQUIREMENTS.
4. CONTRACTOR TO PROTECT ALL BUILDINGS ALONG ALIGNMENT. USE ADEQUATE SHORING WHERE NECESSARY TO PROTECT BUILDING FOUNDATIONS.
5. NEW SEWER TO OCCUPY SAME TRENCH AS EXISTING SEWER. REMOVE EXISTING SEWER PIPE. BYPASS PUMPING REQUIRED TO MAINTAIN SERVICE AT ALL TIMES UNLESS SPECIFICALLY AUTHORIZED BY OWNER. SUBMIT SERVICE AND BYPASS PUMPING PLAN TO TOWN FOR REVIEW AND ACCEPTANCE PRIOR TO BEGINNING CONSTRUCTION.
6. UTILITIES IDENTIFIED VIA ONE CALL LOCATES. CONTRACTOR TO FIELD VERIFY ALL EXISTING UTILITIES AND CROSSINGS. MAINTAIN 18" MINIMUM VERTICAL SEPARATION BETWEEN ALL EXISTING UTILITIES AND NEW SEWER LINE. NOTIFY ENGINEER OR TOWN OF JOHNSTOWN IF ANY CONFLICTS EXIST.
7. EXISTING SANITARY SERVICE LOCATIONS AND QUANTITIES ESTIMATED BASED ON BUILDING LOCATIONS AND REVIEW OF LIMITED CCTV DATA. CONTRACTOR TO VERIFY.
8. INSTALL SEWER LINE AT MINIMUM 18" BENEATH EXISTING WATERLINE. IF 18" REQUIREMENT CANNOT BE MET, CONSTRUCT THE CROSSING USING ONE LENGTH OF PIPE AT LEAST 14 FEET LONG CENTERED OVER OR UNDER THE WATER MAIN. ENCASE ALL SEWER JOINTS WITH CONCRETE THAT EXIST WITHIN 10 FEET EITHER SIDE OF THE WATERLINE. SEE SHEET C-501 DETAIL WW-7. PROTECT AND HOLD OVERHEAD UTILITY POLES WHERE NECESSARY. COORDINATE WITH UTILITY OWNER.
9. CONTRACTOR TO PROVIDE AS-BUILT SURVEY INCLUDING INVERT ELEVATIONS, JET AND CAMERA SEWER LINE AFTER CONSTRUCTION COMPLETION.
- 10.



J-U-B ENGINEERS, INC.

J-U-B ENGINEERS, INC.
2809 E. Harmony Road
Suite 300
Fort Collins, CO 80528
Phone: 970.377.3602
www.jub.com

PRELIMINARY
PLANS

NOT FOR
CONSTRUCTION

REUSE OF DRAWINGS
JUB SHALL RETAIN ALL COMMON LAW, STATUTORY, COPYRIGHT AND OTHER RIGHTS IN THESE DRAWINGS AND THE SEWER SERVICE LINE. ANY REUSE OF THESE DRAWINGS WITHOUT THE WRITTEN CONSENT OF JUB WILL BE AT CLIENTS SOLE RISK AND WITHOUT LIABILITY OR LEGAL EXPOSURE TO JUB.

REVISION		BY		DATE
NO.	DESCRIPTION	NO.	BY	DATE

ALLEY SEWER REHABILITATION
TOWN OF JOHNSTOWN

PLAN & PROFILE

FILE: 87-24-001 C-201
JUB PROJ. #: 87-24-001
DRAWN BY: TJG
DESIGN BY: TJG
CHECKED BY: KCY
AT FULL SIZE, IF NOT ONE
INCH, SCALE ACCORDINGLY
LAST UPDATED: 5/24/2024

SHEET NUMBER:

C-202

