



I-25 North Express Lanes: Segment 6 - Berthoud to Johnstown Johnstown Council Meeting

September 7, 2022



Agenda

- Project Overview and Progress
- Colorado Highway 60 Interchange
 - Scope
 - Closure
 - Detour Routes
 - Public Outreach

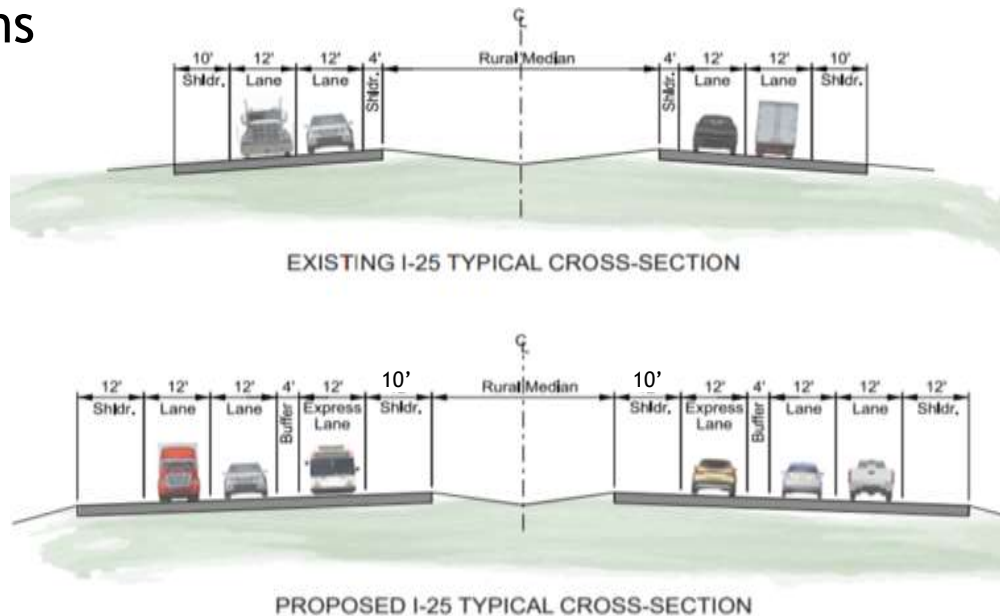




Corridor Scope

I-25 North: CO 56 to Prospect

- Widening I-25 from south of CO 56 to Prospect (Ft. Collins) for almost 20 miles in each direction
- Increases safety and operations
- Over \$900M in corridor improvements
- Refer to previous presentations for more info:
<https://www.codot.gov/projects/north-i-25/johnstown-to-fort-collins>



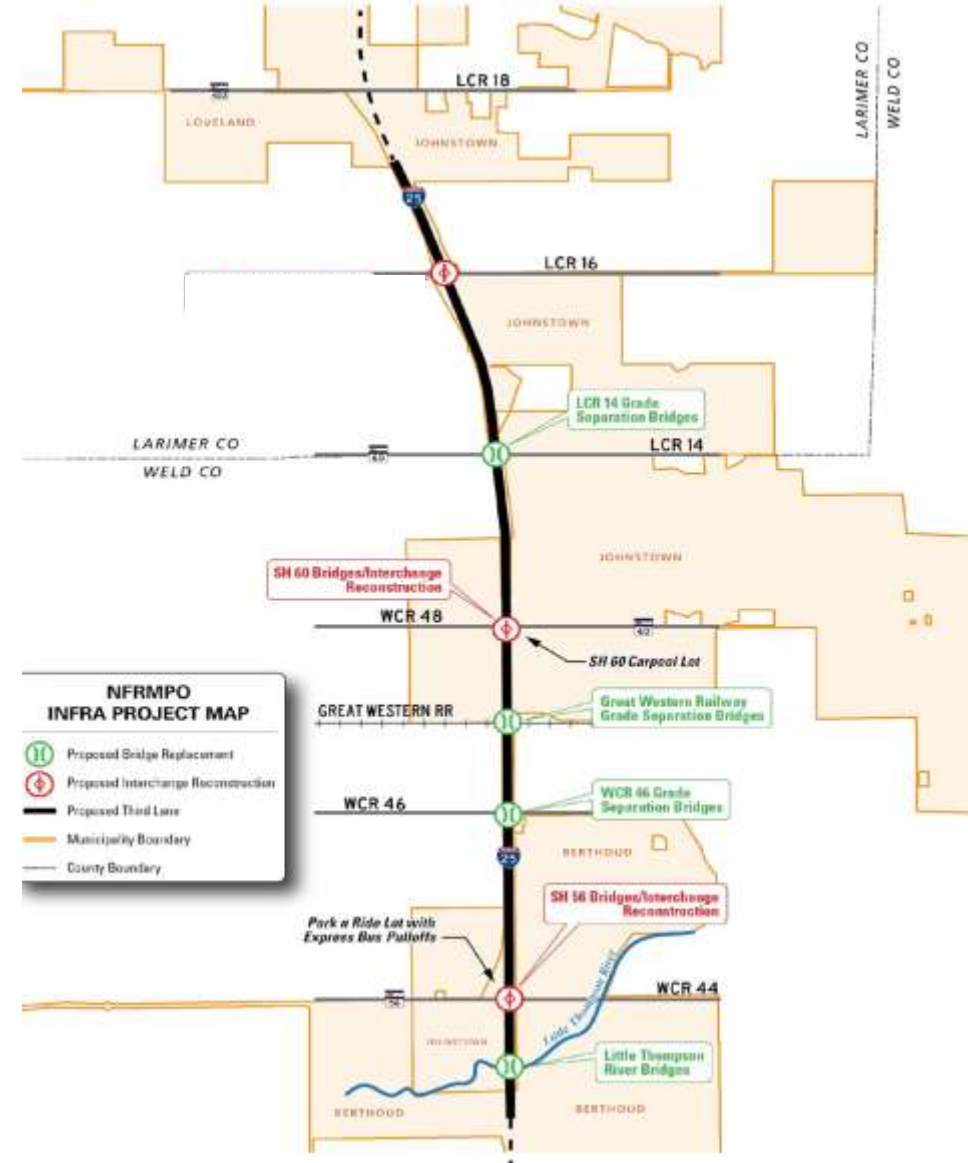


Project Scope

I-25 Segment 6: CO 56 to CO 402

Project Elements	Percent Complete
Pavement	50
Reconstructing CO 56 and CO 60 interchanges	70
Reconstructing/widening 12 bridges	50
Relocating over 35 Utilities	90
Right of way from 40 properties	95
Design	99
Total Construction	61

Segment 6 Project set for completion in early 2024





CO 56 Construction I-25 Segment 6 Update

No
lane



Current Configuration
(August 2022)



-
-
-

September 7, 2022 Segment 6 Johnstown Council Meeting
A portion of the lot will be open for carpooling in the Fall 2022



Phase II - Southbound Inside Paving I-25 Segment 6 Update

Southbound inside lanes/shoulder – complete in Fall 2022





Project Progress - Roadway Work

I-25 Segment 6 Update

Roadway Work

- **Phase 1** - Complete
- **Phase 2** - Ongoing, complete by Fall 2022
- This Fall/early Winter - Traffic will be shifted to a barrier-separated, head-to-head alignment on the southbound barrel
- **Phase 3** - Winter 2022 - will construct bridges and pave widening





CO 60 Interchange I-25 Segment 6 Update

- CDOT has built base configuration
- Johnstown is contributing money for aesthetic and landscaping improvements



September 7, 2022



Segment 6 Johnstown Council Meeting





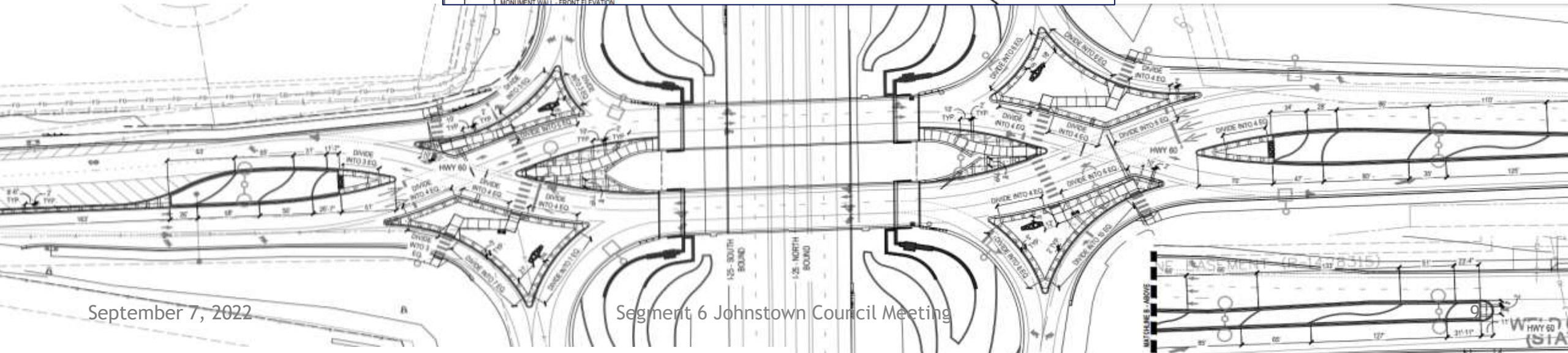
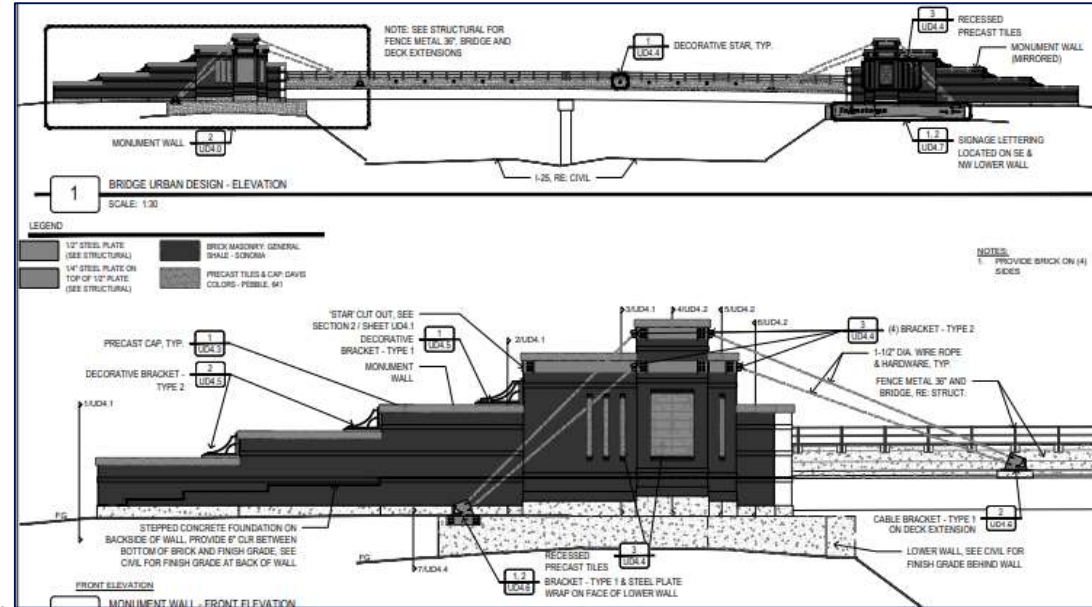
What Needs to Happen Segment 6

Benefits

- Safer
- Operationally more efficient
- Video Link:
<https://www.youtube.com/watch?v=8PConmQy6QM>

21-day Closure Work Elements

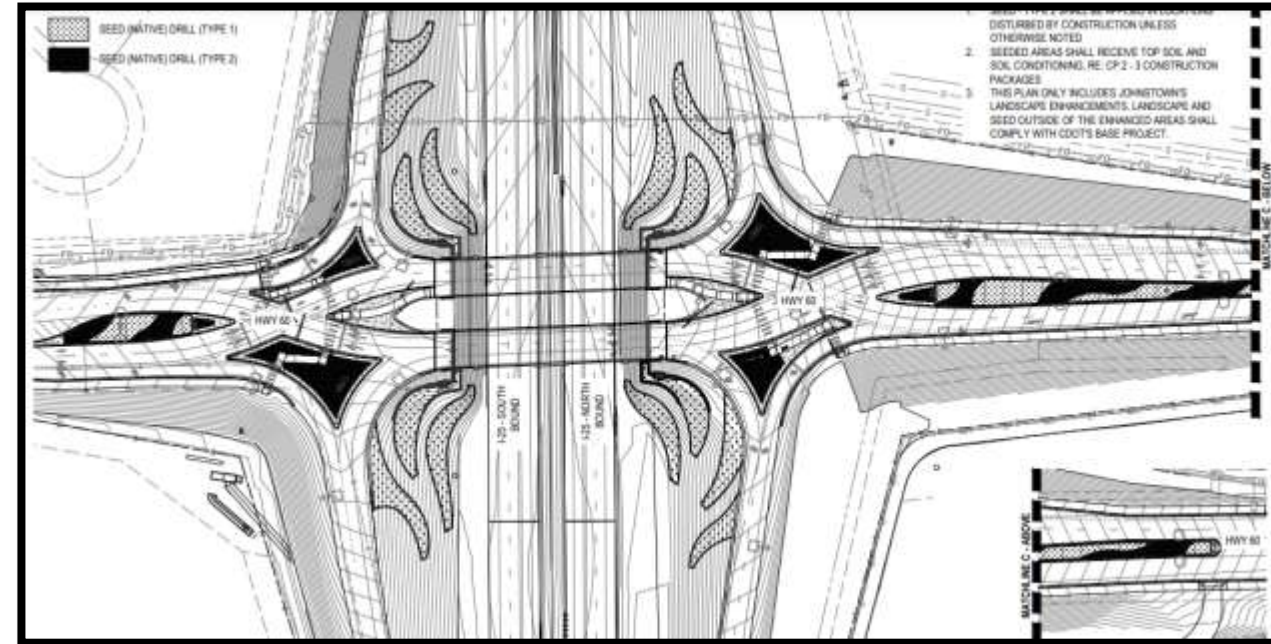
- Drainage Pipes
- Curb and Gutter
- Asphalt Tie ins
- Traffic Signals
- Striping





Colorado Highway 60 Closure

- Needed for motorist and workers safety
- CO 60 East/West Closure Over I-25
 - 21-day maximum
 - Start September 12th
 - Complete no later than October 2nd
- CO 60 Ramp Closures
 - Intermittent ramp closures throughout the 21-day closure
 - Will message with variable message boards
- Other
 - Extended weekday and weekend shifts to maximize work
 - After 21-day closure, it will be in a one-lane in each direction DDI configuration
 - Strong coordination with adjacent Buc-ees improvements



CO 60 interchange will be fully operational by Q2 2023

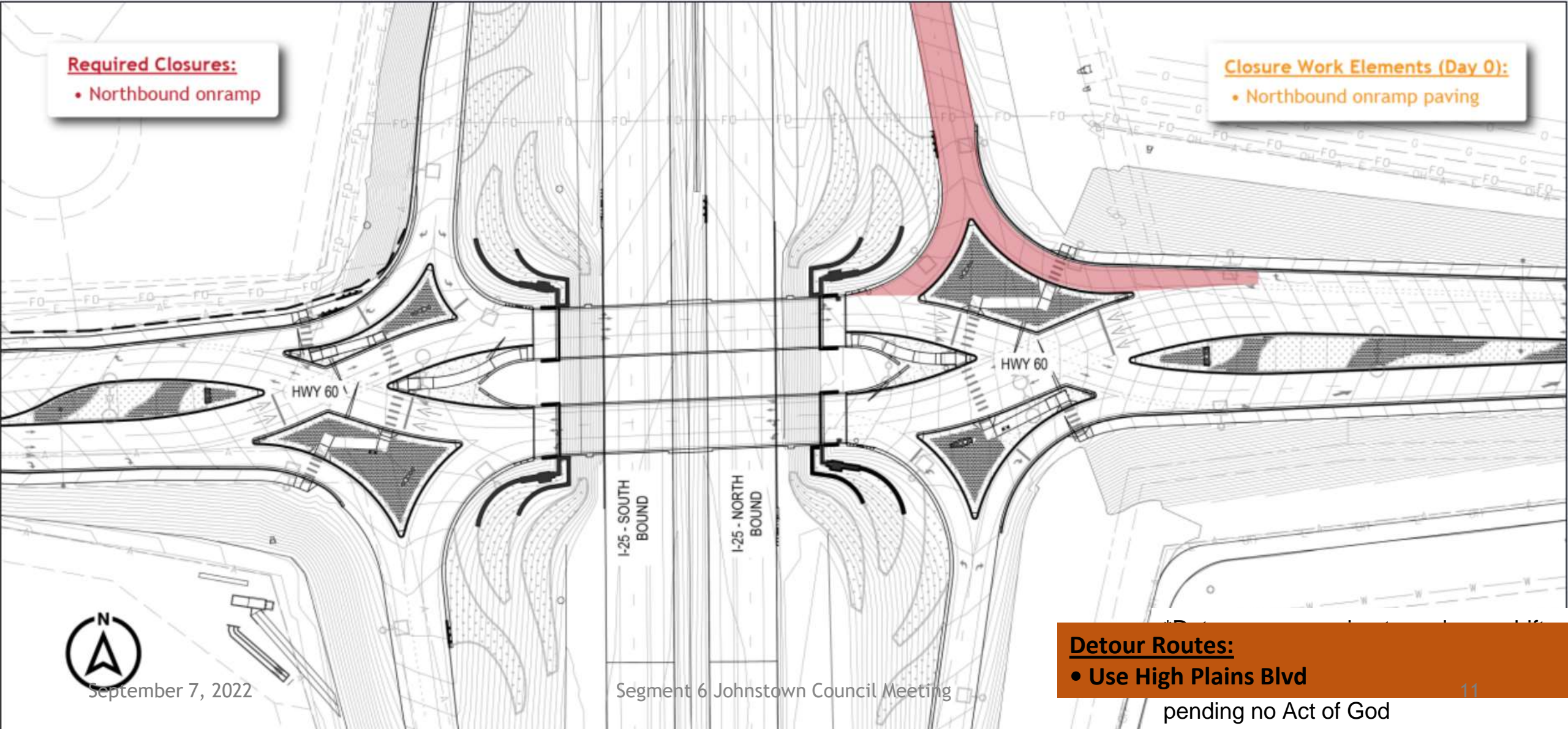


Required Closures:

- Northbound onramp

Closure Work Elements (Day 0):

- Northbound onramp paving



Detour Routes:

- Use High Plains Blvd

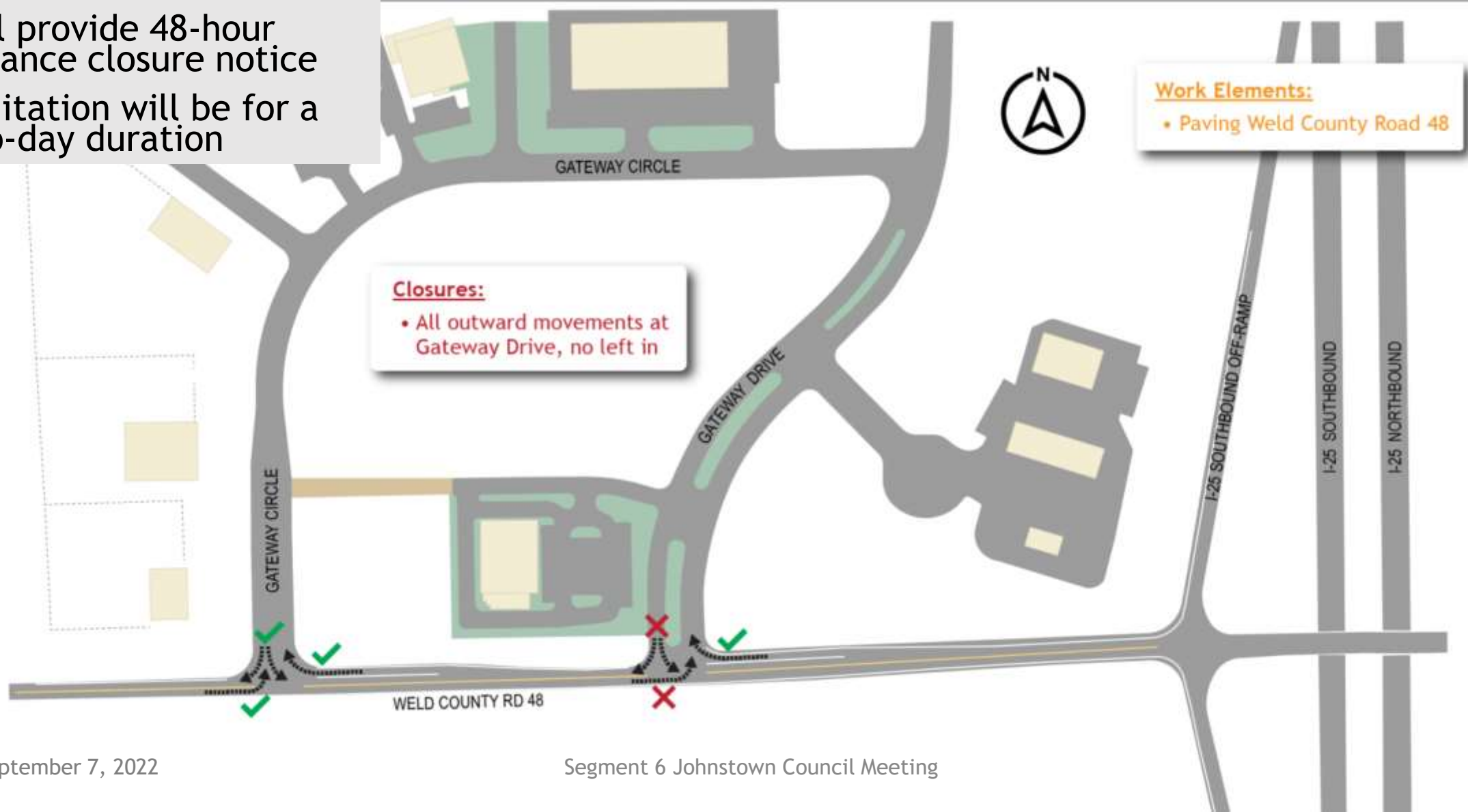
September 7, 2022

Segment 6 Johnstown Council Meeting

pending no Act of God



- Will provide 48-hour advance closure notice
- Limitation will be for a two-day duration



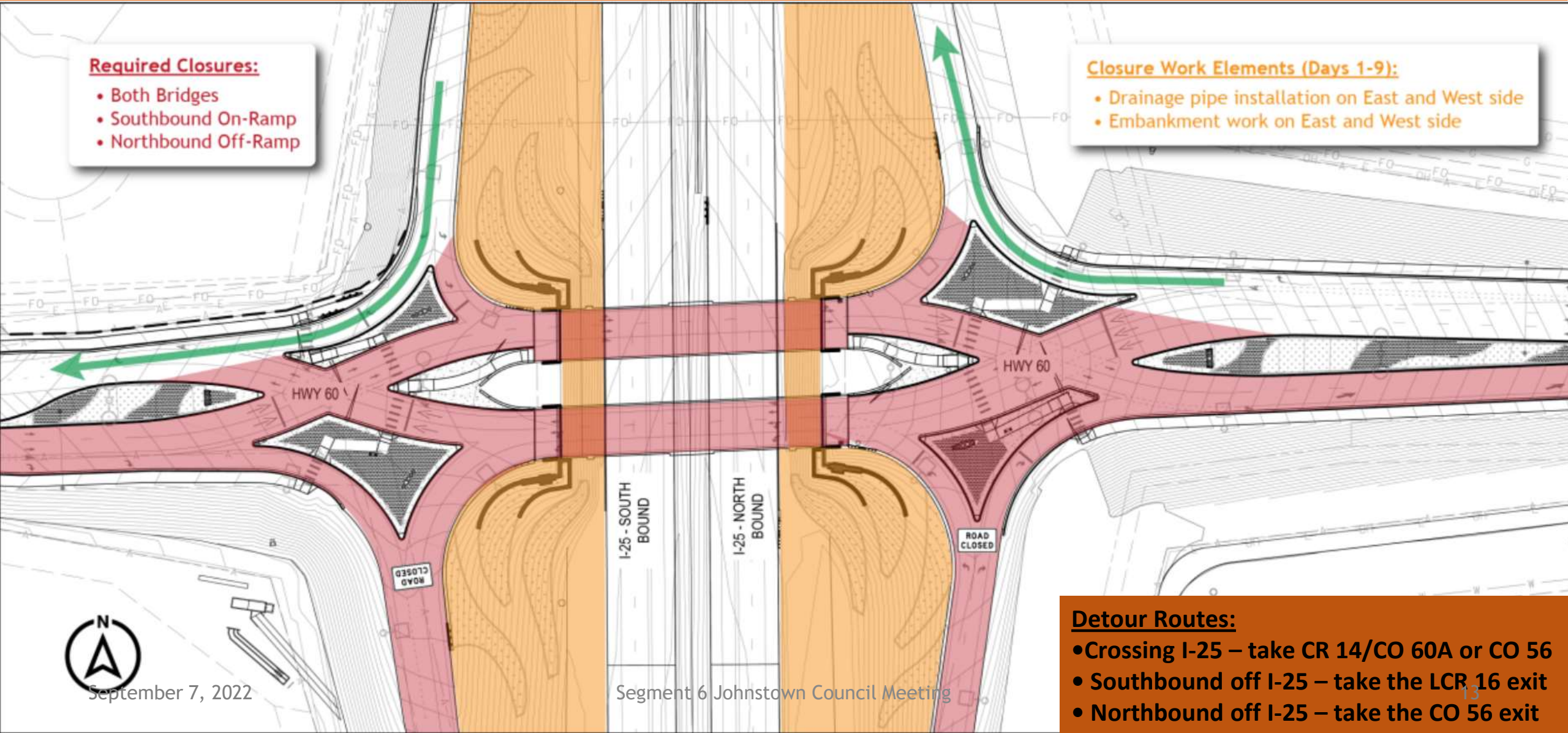


Required Closures:

- Both Bridges
- Southbound On-Ramp
- Northbound Off-Ramp

Closure Work Elements (Days 1-9):

- Drainage pipe installation on East and West side
- Embankment work on East and West side



September 7, 2022

Segment 6 Johnstown Council Meeting

Detour Routes:

- Crossing I-25 – take CR 14/CO 60A or CO 56
- Southbound off I-25 – take the LCR 16 exit
- Northbound off I-25 – take the CO 56 exit

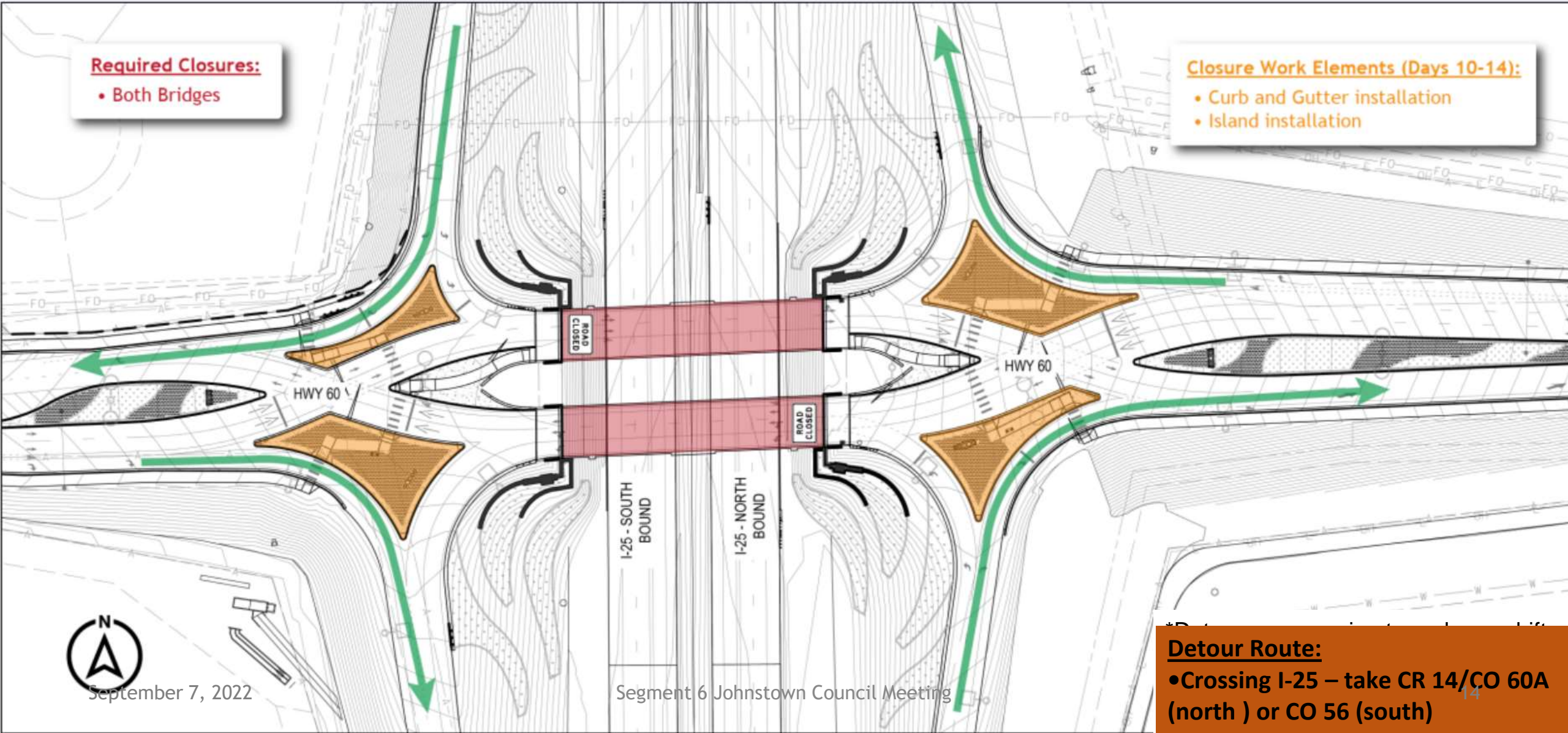


Required Closures:

- Both Bridges

Closure Work Elements (Days 10-14):

- Curb and Gutter installation
- Island installation



September 7, 2022

Segment 6 Johnstown Council Meeting

Detour Route:

- Crossing I-25 – take CR 14/CO 60A (north) or CO 56 (south)



Required Closures:

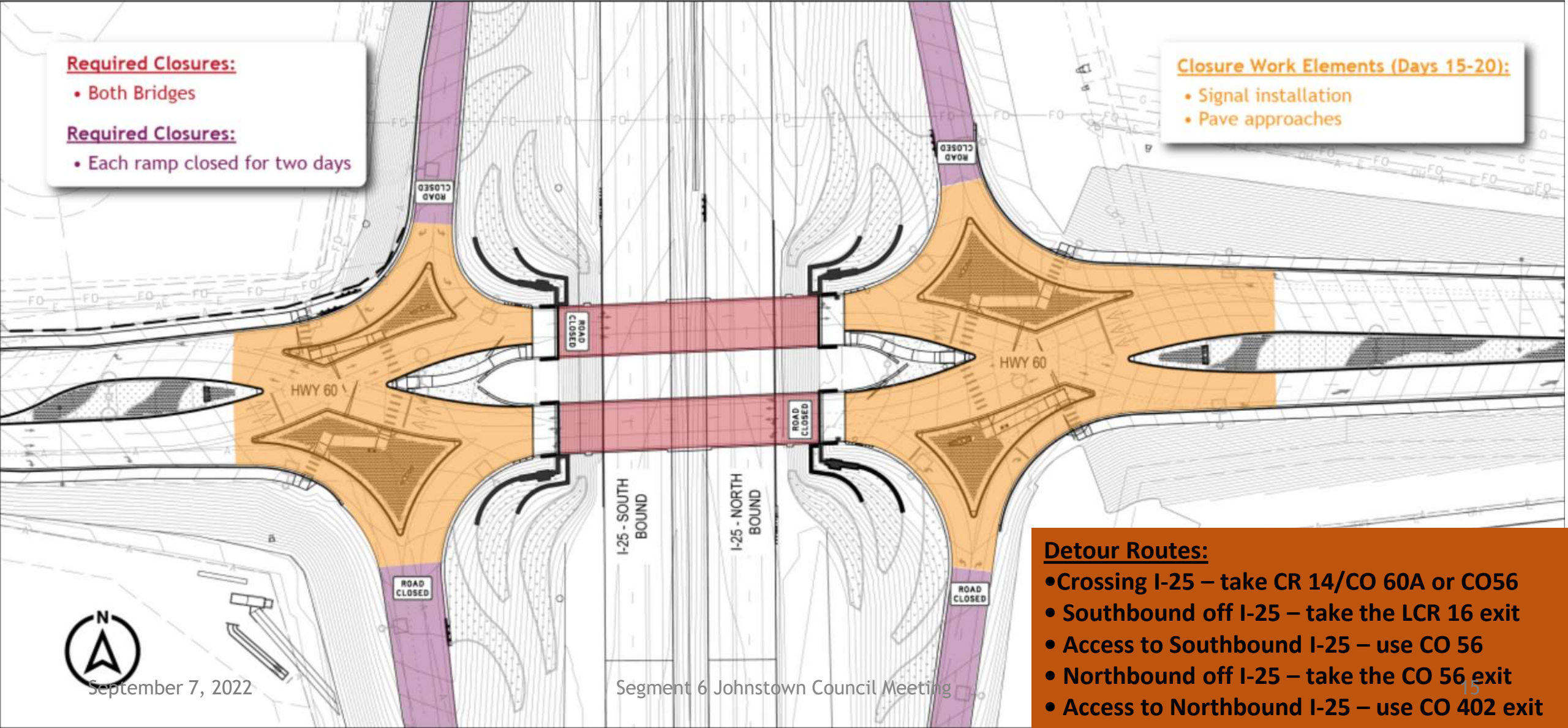
- Both Bridges

Required Closures:

- Each ramp closed for two days

Closure Work Elements (Days 15-20):

- Signal installation
- Pave approaches



Detour Routes:

- Crossing I-25 – take CR 14/CO 60A or CO56
- Southbound off I-25 – take the LCR 16 exit
- Access to Southbound I-25 – use CO 56
- Northbound off I-25 – take the CO 56 exit
- Access to Northbound I-25 – use CO 402 exit

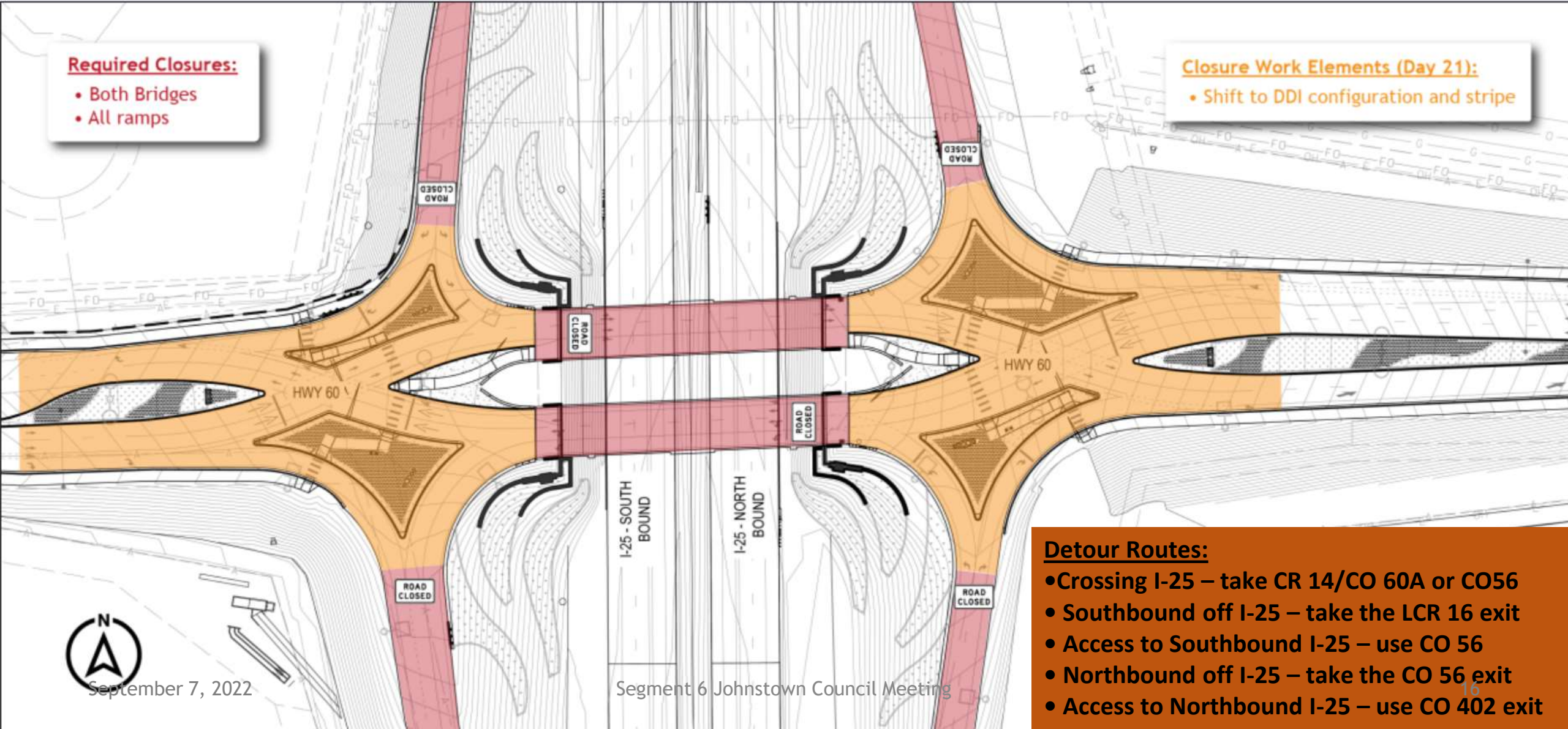


Required Closures:

- Both Bridges
- All ramps

Closure Work Elements (Day 21):

- Shift to DDI configuration and stripe



Detour Routes:

- Crossing I-25 – take CR 14/CO 60A or CO56
- Southbound off I-25 – take the LCR 16 exit
- Access to Southbound I-25 – use CO 56
- Northbound off I-25 – take the CO 56 exit
- Access to Northbound I-25 – use CO 402 exit

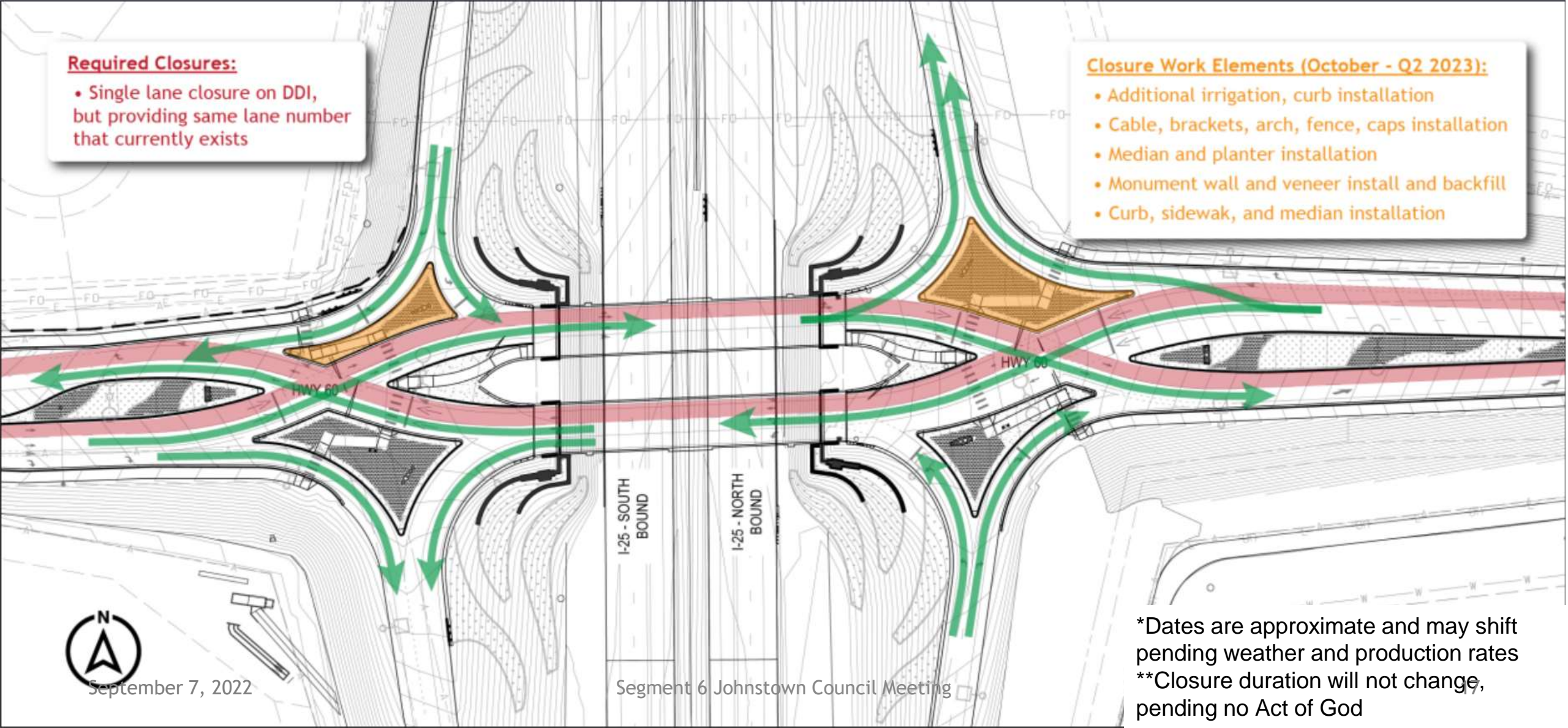


Required Closures:

- Single lane closure on DDI, but providing same lane number that currently exists

Closure Work Elements (October - Q2 2023):

- Additional irrigation, curb installation
- Cable, brackets, arch, fence, caps installation
- Median and planter installation
- Monument wall and veneer install and backfill
- Curb, sidewalk, and median installation



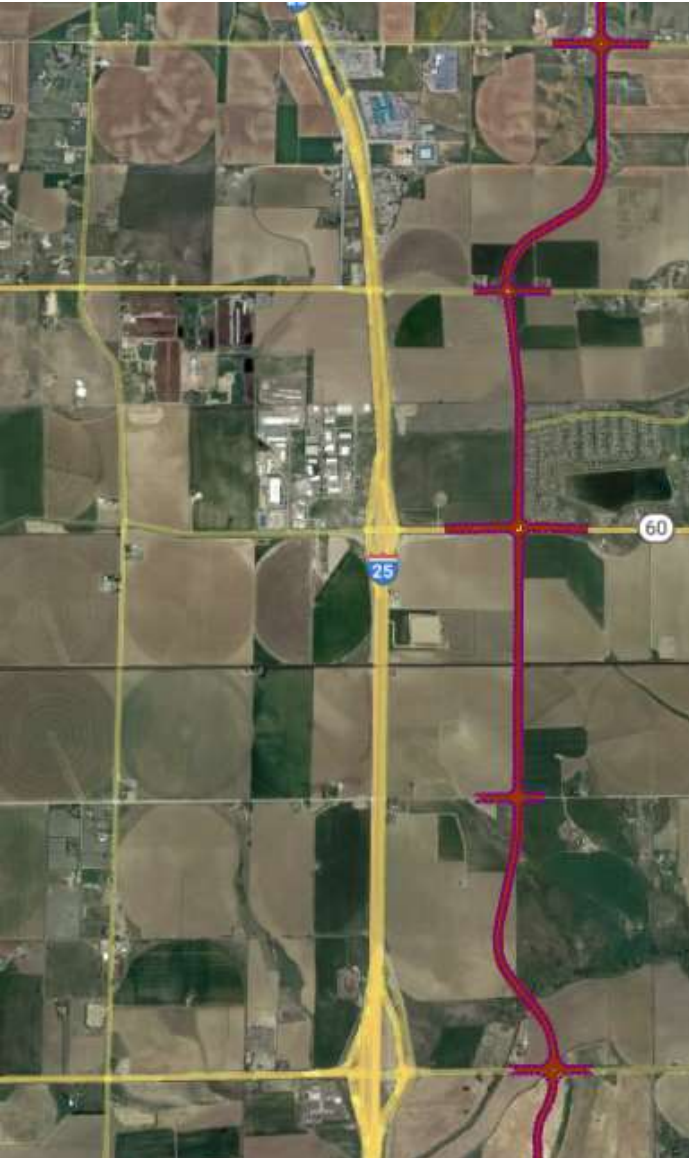
September 7, 2022

Segment 6 Johnstown Council Meeting

*Dates are approximate and may shift pending weather and production rates
**Closure duration will not change, pending no Act of God



CO 60 and Ramp Closure Summary



21-Day Closure		
Day	Work Scope	Closures
<ul style="list-style-type: none"> •Day 0 •September 11 	<ul style="list-style-type: none"> •Paving 	<ul style="list-style-type: none"> •NB On
<ul style="list-style-type: none"> •Days 1 through 9 •September 12-20 	<ul style="list-style-type: none"> •Drainage Pipe Installation on east and west side •Embankment work on east and west side 	<ul style="list-style-type: none"> •Both Bridges •SB ON •NB OFF
<ul style="list-style-type: none"> •Days 10 through 14 •September 21-25 	<ul style="list-style-type: none"> •Curb and Gutter Installation •Island Installation 	<ul style="list-style-type: none"> •Both Bridges
<ul style="list-style-type: none"> •Days 14 through 20 •September 26-October 1 	<ul style="list-style-type: none"> •Signal Installation •Pave approaches 	<ul style="list-style-type: none"> •Both Bridges •Each ramp closed two days
<ul style="list-style-type: none"> •Day 21 •October 2 	<ul style="list-style-type: none"> •Stripe and pavement markings •Shift to single-lane in both directions, DDI Configuration and stripe 	<ul style="list-style-type: none"> •Both Bridges •All ramps
After 21-Day Closure		
Q1 and Q2 2023	<ul style="list-style-type: none"> •Additional Irrigation, Curb Installation •Cable, Brackets, Arch, Fence, Caps Installation •Median and Planter Installation •Monument Wall and Vaneer Install and Backfill •Curb, Sidewalk, Median Installation 	Single lane closure on DDI, but providing same lane number that currently exists
*All days are estimates and may shift based on weather, construction production, etc.		
*The 21-day closure duration will not shift pending no act of God		



Traffic Management

Residents expressed concerns during the Virtual Public Meeting (8/22/22) about increased traffic, solutions that will be implemented are:

- Increased police presence to address speeding
- Flagging at critical intersections to manage queuing during peak hours (morning and evening), possible locations:
 - CO 56 and WCR 7
 - CO 60 and WCR 7
 - CO 56 and Colorado Blvd
 - CO 60 and Colorado Blvd
 - High Plains Blvd. and CR 14
- Open High Plains as part of the detour route
- Maintain flexibility - will adjust based on ramp closures and observations

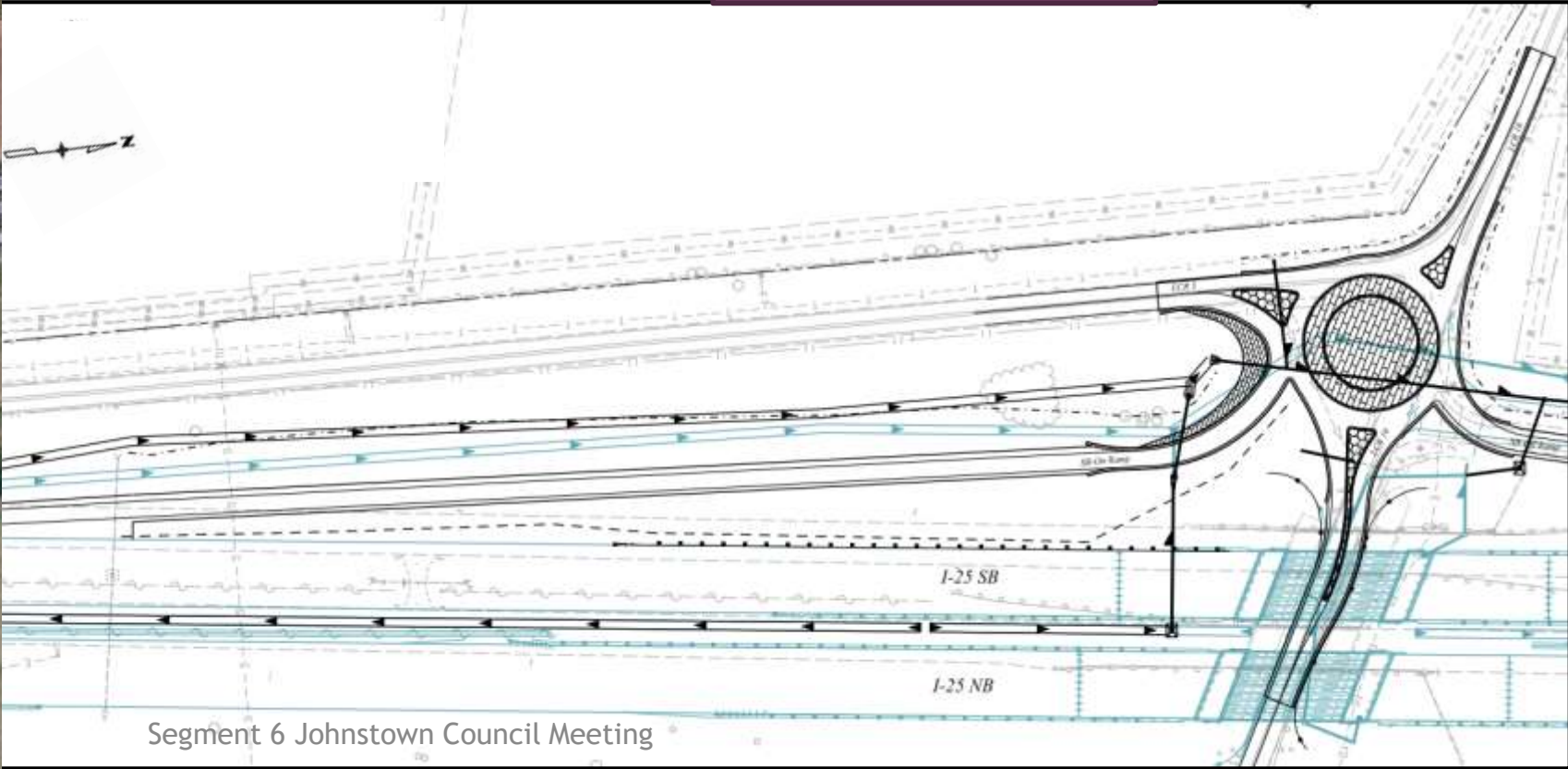




LCR 16 Interchange Improvements I-25 Segment 6 Update

- Adding a Southbound onramp
- Necessitates a five-legged roundabout to connect with
- Start construction this spring (90-day closure of LCR 16 through movement and SB offramp) |

Conceptual Plan

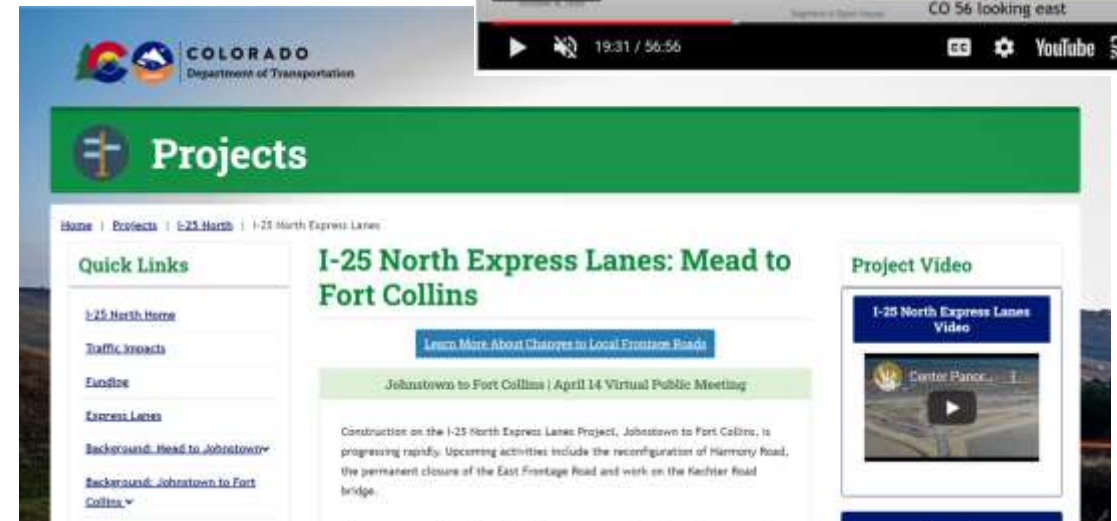
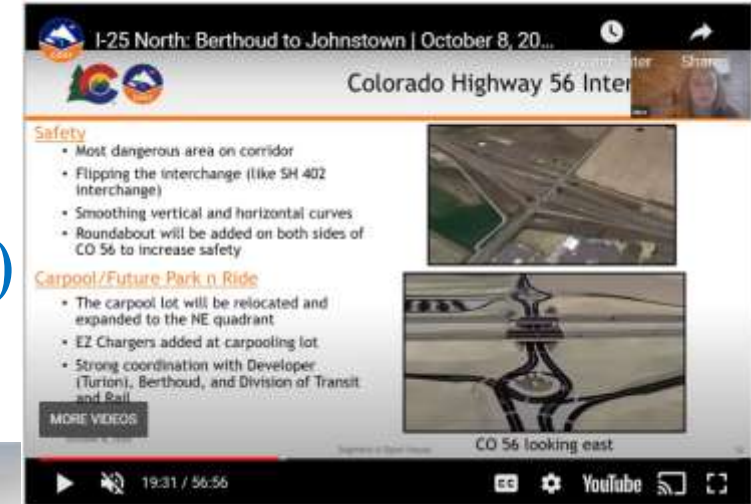




CO 60 Closure Communication Plan

Impacts communicated in variety of ways:

- Advance message boards on the highway
- Flyers at local businesses, homes and schools
- Weekly emails prior to and during (highlighting progress)
- Virtual public meeting
- Social media
- Press release
- Website
- Individual meetings





Project Contact Information

- To learn more please visit <https://www.codot.gov/projects/north-i-25>
- Email northi25expresslanes@gmail.com
- Hotline 720-593-1996

- For more information on Express Lanes please visit <https://www.codot.gov/programs/expresslanes/express-lanes> .



Questions?

September 7, 2022



WCR 34 Bridge Hit (Exit 245)

1. Sustained severe damage to two of the four bridge girders on August 8th
2. South half of bridge is being monitored
3. Safe for cars to pass under on I-25



September 7, 2022

Segment 6 Johnstown Council Meeting



Damage: Roadway





Repair and Evaluation Plan

1. Open Bridge to one lane direction in the westbound direction and repair I-25 roadway
2. I-25 ramp reroute required to perform necessary work
3. Will determine if the bridge can be repaired or if the resources would be better used to progress straight to a full bridge replacement

